

DPW & YOU

— *Making a difference, together* —

DPW Overview

Community Association Summit

Erin Dey, Assistant Director

Blake Lightcap, Chief of Highways Infrastructure Management

James Small, Chief of Road Operations

Richard Folderauer, Senior Traffic Engineer

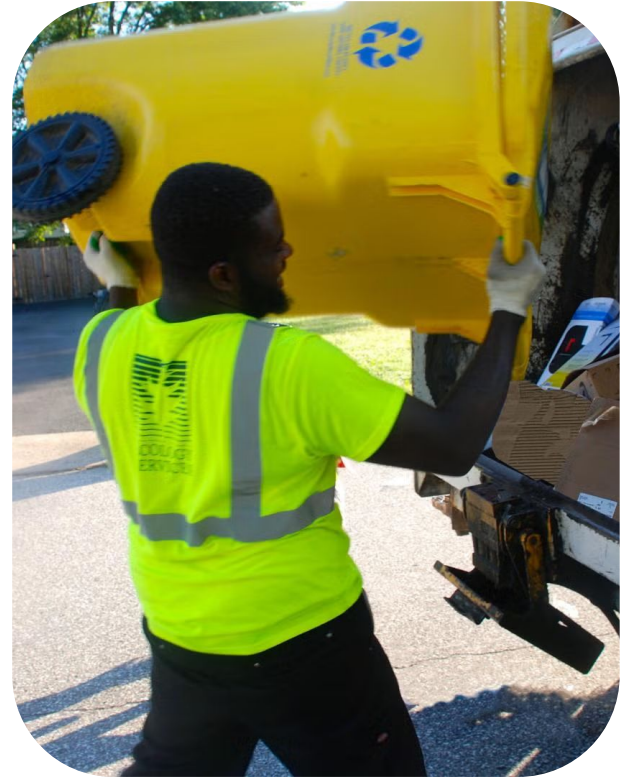


DPWandYOU.com

Community Voices

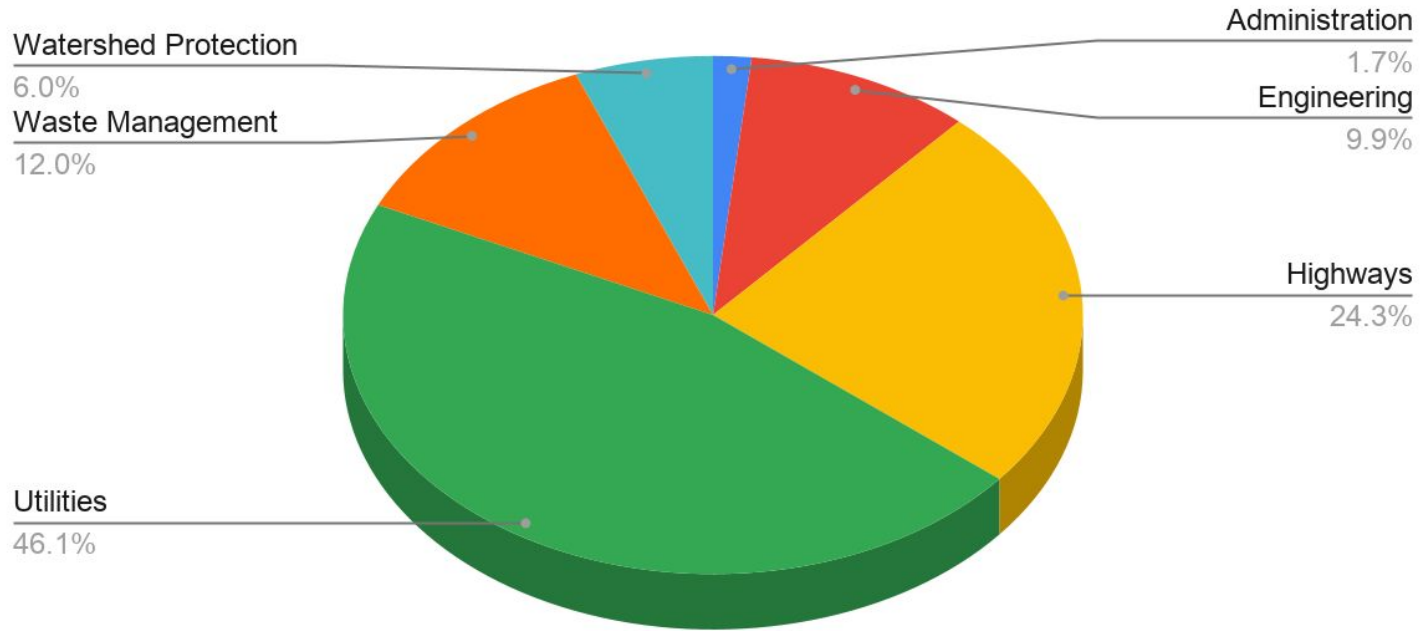


The Invisible Foundation

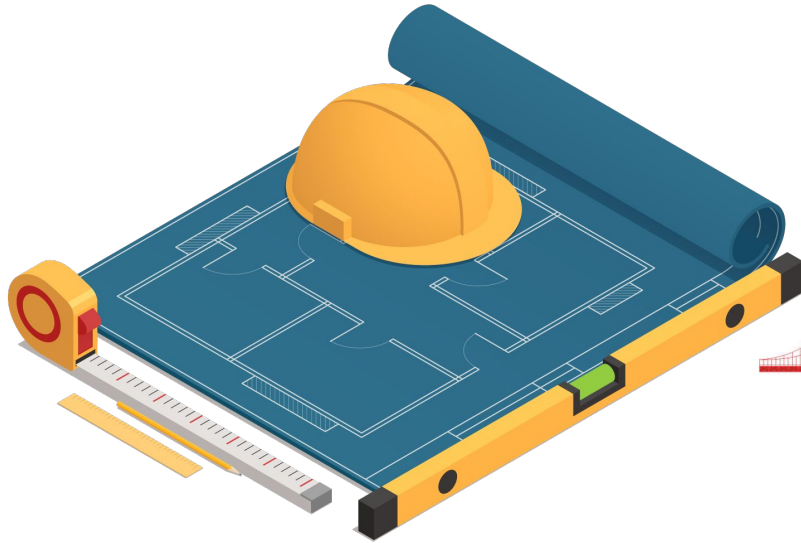


DPW Staff by Bureau

777 Employees



Bureau of Engineering



650
Active Projects

Project Managers 43 Total
(15 projects per)

- Current Budget **\$1.4 Billion**
 - Estimate at Completion **\$2.6 Billion**
-



Roads & Bridges



Fire Stations



Police Stations



Water & Sewer



Parks



Libraries

Bureau of Watershed Protection & Restoration



Through **10 years**, we have awarded approximately

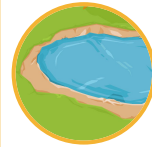
\$9.2 million

in grants to local watershed organizations

and leveraged approximately **\$17.1 million** in additional outside dollars.



Stream, Wetland & Shoreline **Restoration**
48 out of 101 complete



Stormwater Pond **Retrofits**
50 out of 73 complete

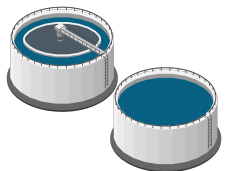


Stormwater Outfall **Repairs**
17 out of 25 complete



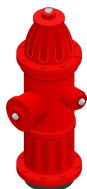
Impervious Acres **Treated**
3,519 out of 2,998 complete

Bureau of Utility Operations



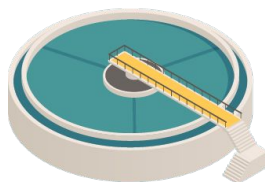
11

Water treatment plants



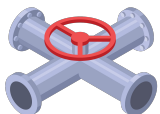
15,550

Fire hydrants



8

Water reclamation facilities



1,560

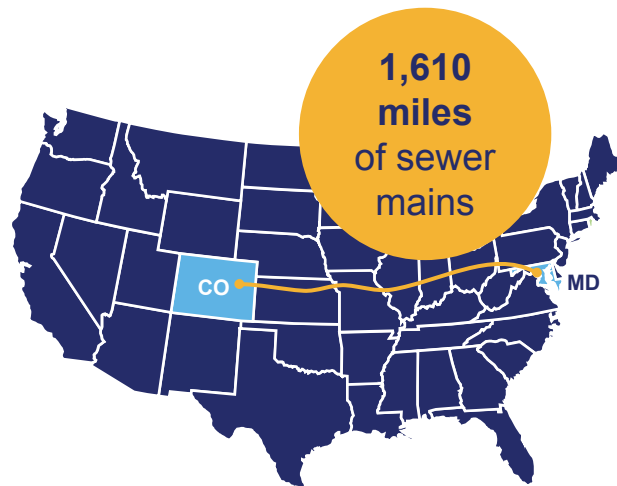
Miles of distribution and transmission mains



28,450

Water valves

The sewer system is equivalent to the approximate driving distance between **Maryland and Colorado**



Emergency Services - Dispatch & Technicians

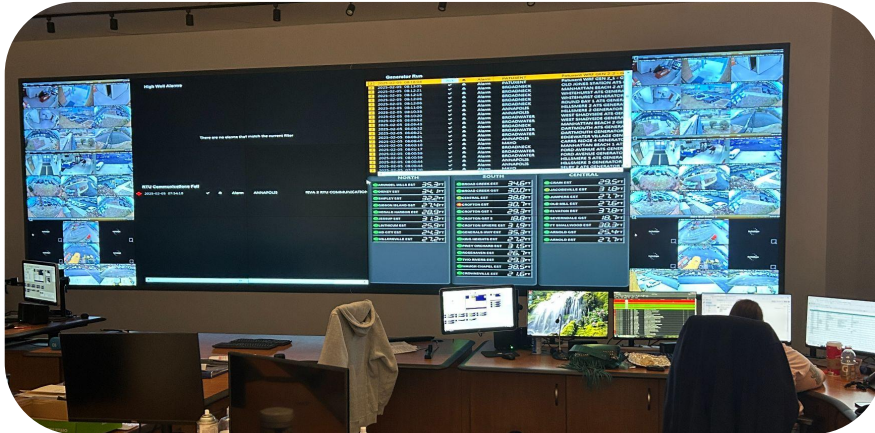
Dispatch 24 hrs/day, 7 days/week ● Ecrew response in under 2 hours

Dispatch **410-222-8400**

- Answer customer inquiries
- Triage calls to other Departments
- Monitor Supervisory Control and Data Acquisition (SCADA) alarms
- Deploy emergency personnel

Emergency Response Technicians **Ecrew**

- First responders
- Investigate water leak, sewage spills, water meter issues and other issues
- Performs basic repairs and refers work to other divisions



Bureau of Waste Management Services

Landfill & Recycling Center Locations

1. Millersville Landfill & Central Recycling Center
2. Northern Recycling Center
3. Southern Recycling Center



The Anne Arundel County Department of Public Works is the **primary provider of solid waste services** to County residents

172,589

customer households receive curbside collection service as of **April 1, 2025**

86% of budgeted operating **revenue** is from the solid waste service charge

The current annual charge of **\$426 per household** was set in FY26



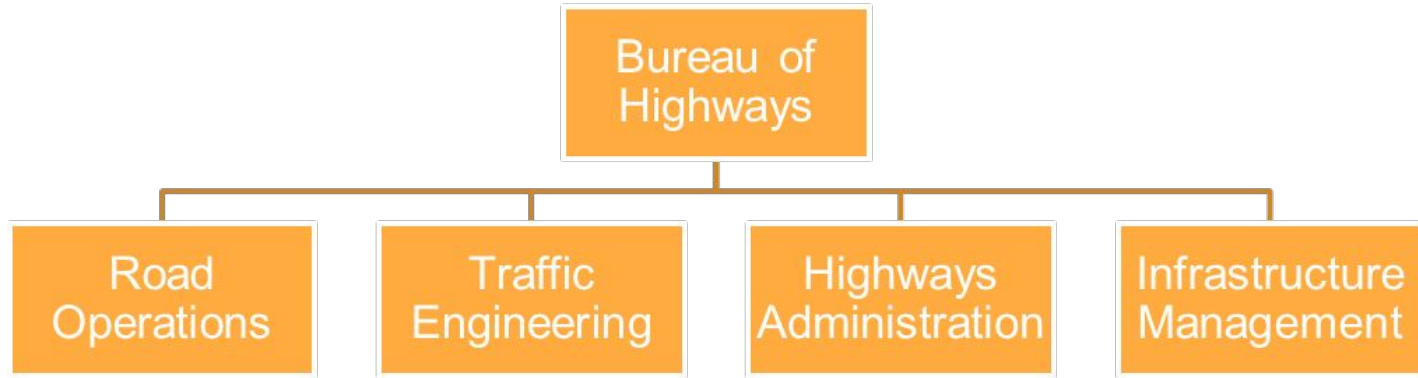
Curbside collection

of recyclables, yard waste and trash

Outsourced to the private sector (**\$42.1 million**) through **14 contracts**

Represents **48% of the operating budget**

Organizational Structure - Bureau of Highways



Bureau of Highways Service Priorities

- The goal is to balance citizen response with planned, preventative, and corrective maintenance.
- Highways Service Delivery priorities are:
 - Safety
 - Regulatory Compliance
 - Infrastructure Preservation
 - User Comfort and Convenience
 - Aesthetics

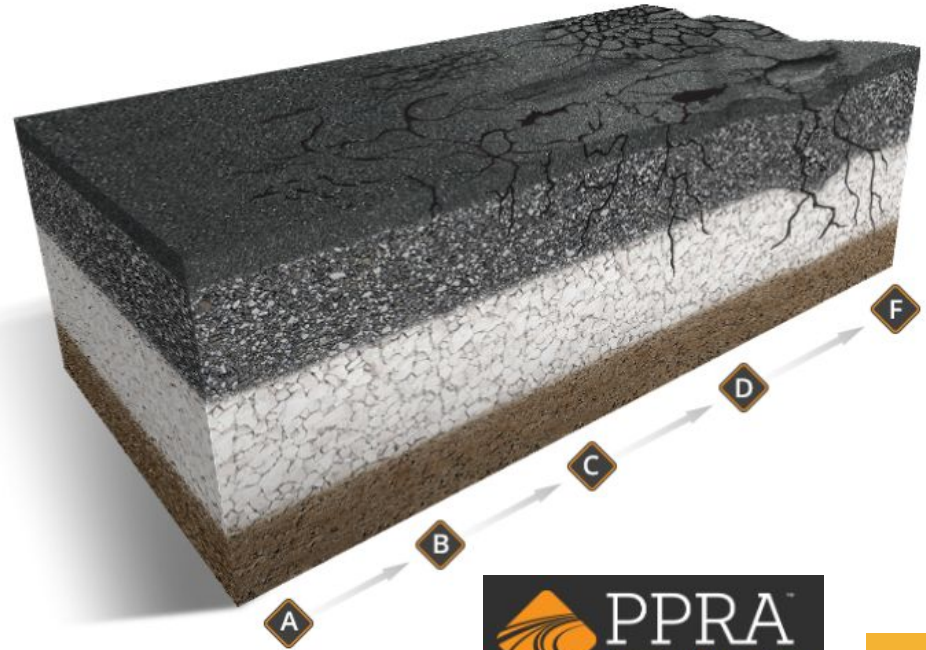
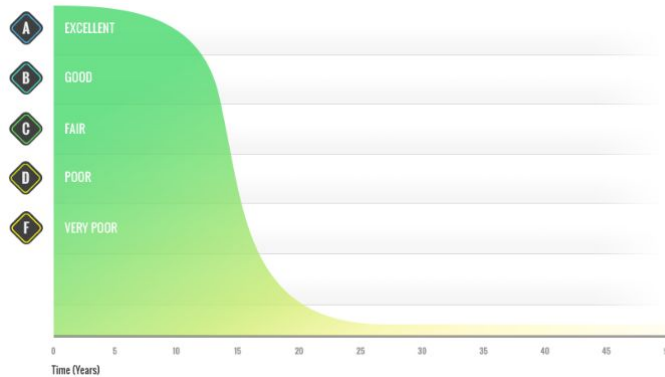
Pavement Management Program

- Objective of maintaining the overall health of the County's roadway network
- Perform inventory and condition assessments for roadway pavements (Data)
- Network level analysis and program development (Modeling)
- Project level treatment selection, scoping, and contract procurement
- Execute contracted maintenance and rehabilitation of roadway assets within the County Right-of-Way:
 - Pavements
 - Curb and Gutter
 - Sidewalk
 - Curb ramps
 - Guardrail



Pavement Preservation

- Roads are expensive!
- Pavements deteriorate over time
- Constructed from the bottom up...
- Maintained from the top down...
- Preventive Maintenance is key

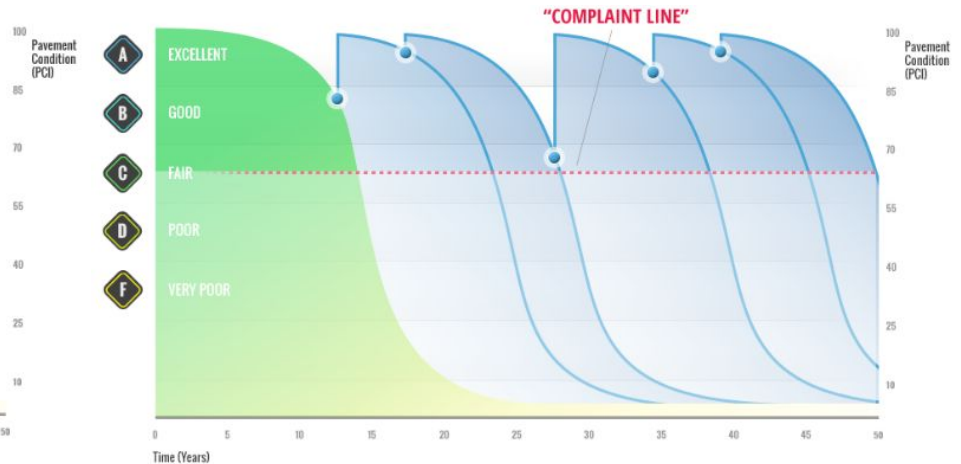
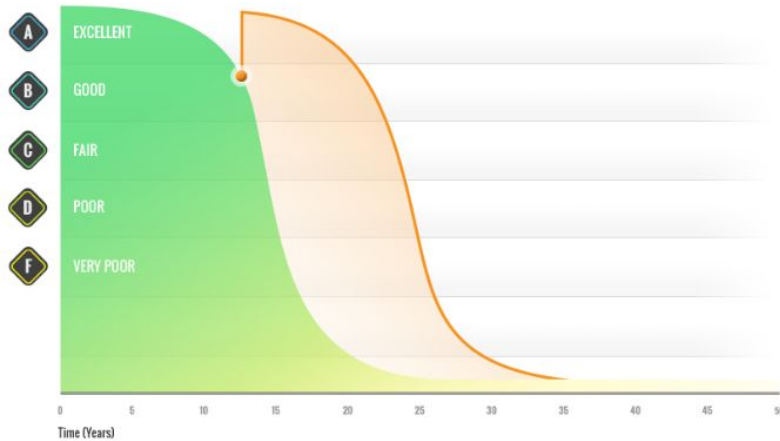


Source: roadresource.org



Pavement Preventive Maintenance

- Apply the right treatment to the right road at the right time.



Source: roadresource.org

Treatment Types

- Routine Maintenance
 - Crack Seal
 - Mastic Repair
 - Permanent Patching



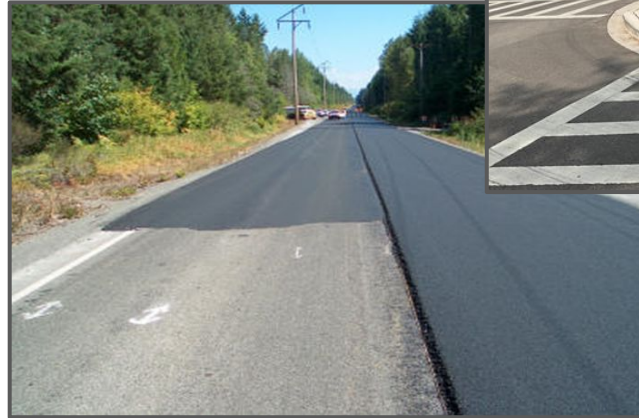
Treatment Types

- Preventative Maintenance
 - Fog Seal
 - Slurry Seal/ Microsurfacing
 - Chip Seal (tar & chip)
 - Cape Seal



Treatment Types

- Rehabilitation
 - Full Reconstruction
 - Asphalt Resurfacing



ADA ROW Compliance Program

- Focused on improvements within the Public ROW
- Elimination of accessibility barriers including curb ramps
- Upgrade to Accessible Pedestrian Signal (APS)
- Implementation of standard details, designer and contractor training, and technical assistance



Concrete (Masonry) Program

- Replacement of existing sidewalk or curb and gutter warranted as a result of vertical faulting, damage, or general deterioration
- Reactive program, typically in response to customer requests



Street Tree Removal and Replanting



What to Expect Prior to Construction?

Residential Roads

- Preseason Mailers (60+ days)
- Preconstruction Flyers (7+ days)
- No Parking Signs (48 hrs)

Commuter Roads

- VMS Boards (7+ days)
- No Parking Signs



Pavement Management Program Web Page

➤ Pavement Management Web Page

<https://www.aacounty.org/public-works/highways/pavement-management-program>

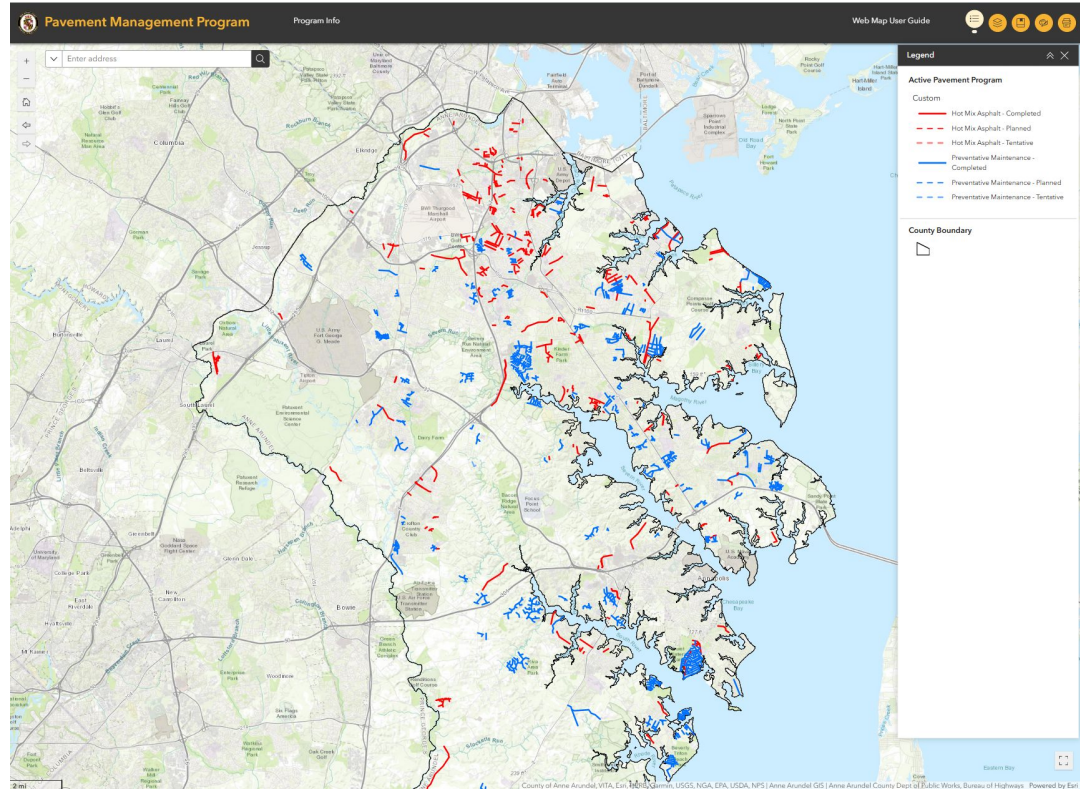
- Overview and Background
- Condition Assessments
- Program Development

The screenshot shows the web page for the Anne Arundel County Pavement Management Program. At the top, there is a navigation bar with links for News, Events, Jobs, Maps, OpenArundel, EngageArundel, and Translate. Below this is the Anne Arundel County logo and a search bar. The main content area features the title "Pavement Management Program" and a sub-header "Home > Public Works > Bureau of Highways". A large image shows a yellow Caterpillar roller working on a road. Below the image, there is a section titled "Pavement Management Program" with a description of the program's core objective. To the right of this section is a section titled "Annual Program Treatments" with a "MORE INFORMATION" button. At the bottom left, there is a sidebar with a "Pavement Management Program" section containing links for "Concrete Program" and "Pavement Surface Treatments".

Pavement Management Program Web Map

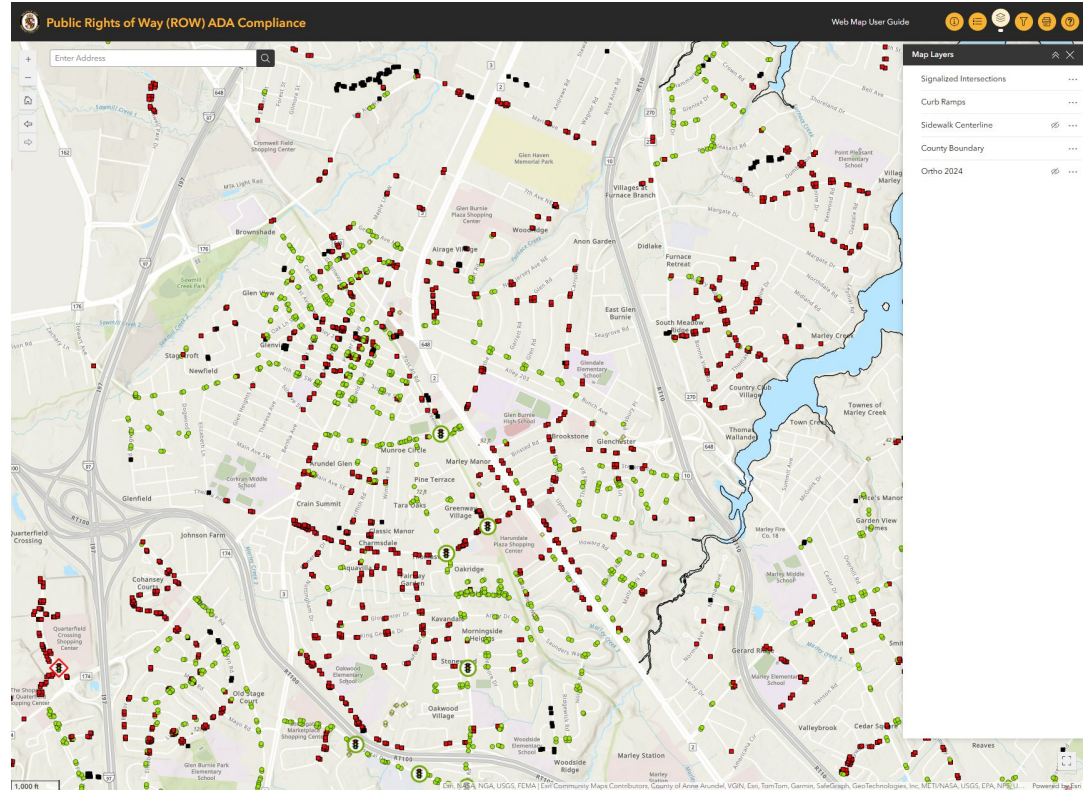
<https://gis.aacounty.org/portal/apps/experiencebuilder/experience/?id=ce4df9054a7f49cc9531d2e3e1dd1071>

Tentative, Planned & Completed
-Hot Mix Asphalt (red)
-Preventive Maintenance (blue)



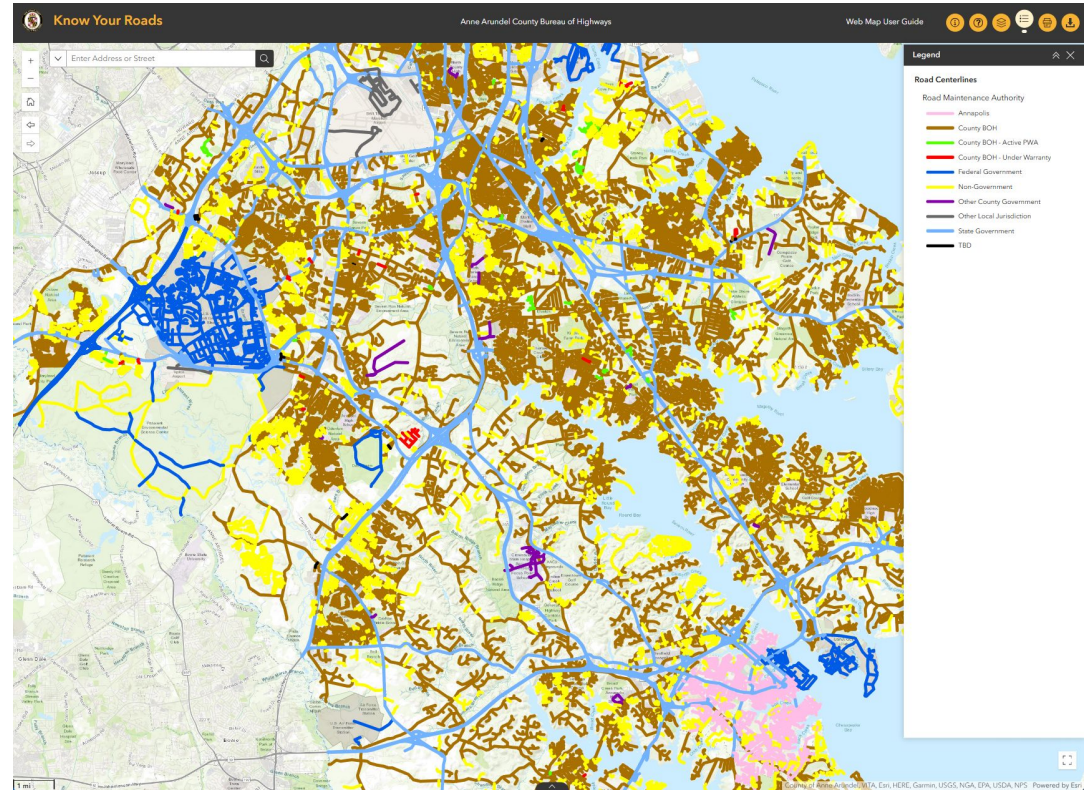
Public ROW ADA Compliance Web Map

<https://gis.aacounty.org/portal/apps/experiencebuilder/experience/?id=4c2b5b390c23423883c86d218f97aaae>



Know Your Roads Web Map

<https://gis.aacounty.org/portal/apps/experiencebuilder/experience/?id=388053ba12184f3ba7977c00dcdcfb532>

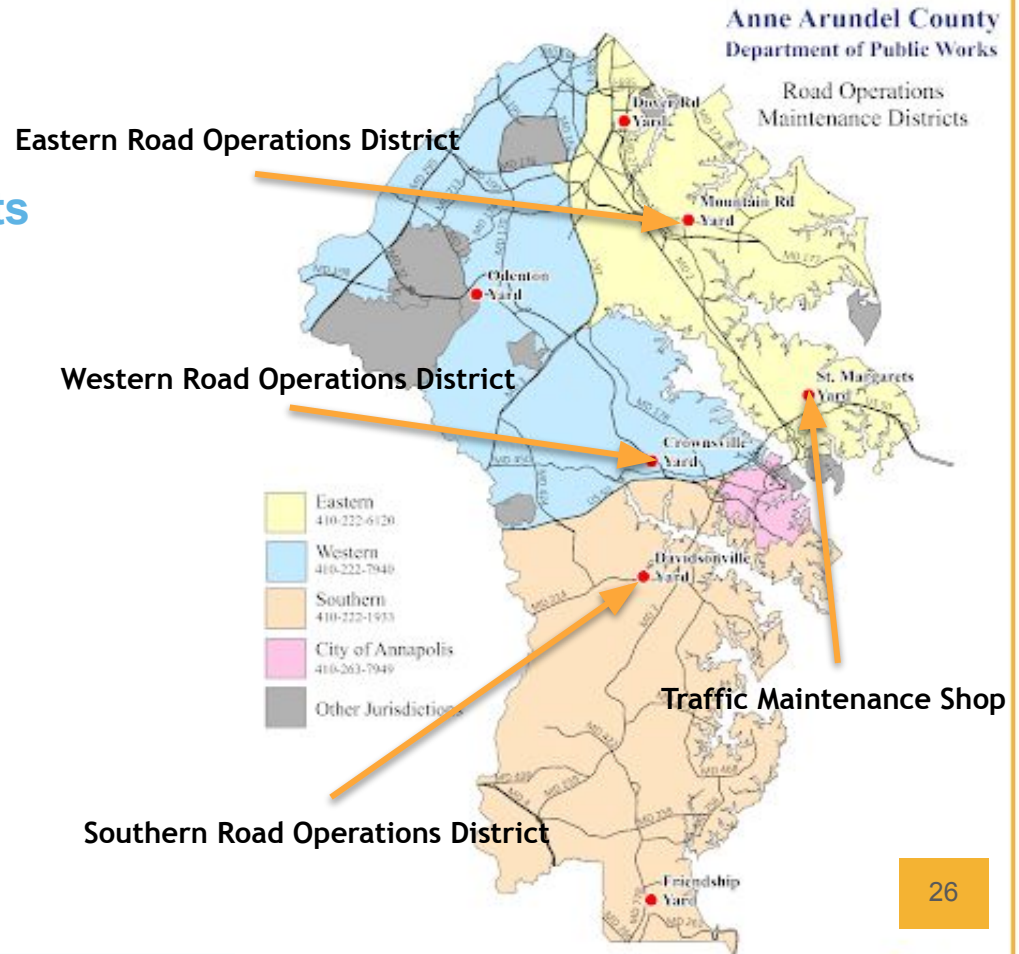


Road Ops Facilities

Prioritization of Work Requirements

1. Safety
2. Regulatory Compliance
3. Infrastructure Preservation
4. User Comfort & Convenience
5. Aesthetics

“Balancing Customer Requests with Programmed Maintenance”



Road Surface Maintenance Operations

- Road Maintenance Service
 - Potholes
 - Asphalt Surface Repair



Road Drainage Maintenance Activities

- Road Drainage Maintenance
 - Ditch/Curb and Gutter Cleaning
 - Drainage Construction
 - Drain Pipe Cleaning
 - Drainage Structure R&R
 - Street Sweeping



Roadside Maintenance Activities

- Roadside Maintenance
 - Litter/Debris Removal
 - Roadside Vegetation/Mowing
 - Tree Trimming and Removal



Storm, Snow & Ice Control Program

The primary objective is to provide immediate access to county-maintained roadways for responding public safety vehicles; Provide public safety by closing roads impacted by snow drifts, flooding, downed power lines, or other roadway safety hazards; Provide employee and general public safety while performing road operations; and Provide property and environmental protection while performing road operations.



Snow Removal



Storm Damage Blocking Roads



Lane Miles and Snow Routes

Area Lane Mile: Actual Paved Surface used to calculate Snow Removal Resources

- Eastern- 2,326 =137 Snow Routes
- Western- 1866 =110 Snow Routes
- Southern- 1016 = 60 Snow Routes

Total: 5209/17 ALMs per route = 307 routes



Deployment and Priority

Deployment:

- Scalable to severity and extent of event; pre-planned staffing levels
- Assignments pre-determined, including drivers, trackers, loaders
- Pre-defined snow removal/ice control routes
- 12-Hour Scheduled Emergency Shifts

Priority Plowing/Salting Plan:

- **Priority 1: Arterials**
- **Priority 2: Collectors** / Hills & Bridges / Bus Routes
- **Priority 3: Residentials** / Dead ends / Cul-de-sacs

Level of Service

- **Arterial** Roads
- **Collector** Roads



Bare Pavement

- **Residential** Roads
One travel lane snow covered or snow packed



Passable



Snow Information: www.aacounty.org/snow



Submit an Online Snow Service Request

Review the level of service assigned to your street & if warranted submit a Service Request.



Who Plows My Street?

Determine if the Department of Public Works is responsible for plowing your Street.

State Roads

The State Highway Administration and its contractors execute the snow removal program on interstate highways and numbered arterials roads such as I-97, MD-2, MD-648, MD-50/301 among others.

- **District 5 Office (Anne Arundel Co.)**
138 Defense Highway
Annapolis MD 21401
410-841-1009
- **Glen Burnie Shop**
Stewart Avenue
Glen Burnie MD 21061
410-766-3770



Traffic Engineering & Traffic Maintenance

Traffic Engineering Office:

Responsible for traffic operations, street lights, subdivision review and traffic signals

***2662 Riva Rd, Suite 110, Annapolis,
21401***

Office: 410-222-7331

Traffic Maintenance Shop:

Responsible for maintenance of Traffic Engineering Assets.

***409 Broadneck Rd, Annapolis, MD,
21409***

Office: 410-222-1940

Traffic Engineering Division

Traffic Engineering Assets:

1. Traffic Signs
2. Pavement Markings
3. Street Lights
4. Traffic Signals

Traffic Operations:

1. Traffic Engineering Projects
2. Traffic Operations Review
3. Neighborhood Traffic Calming

Road Markings		Signals	
Marked Roads (Distinct Count)	593.00	Total	251
Marked Segments (Count)	820.00	Full Traffic Signal (Count)	126
Miles of Yellow Lines (4 inches)	934.02	Fire House (Count)	10
Percent of Yellow Lines - Paint (4 inches)	12.49	Pedestrian Crossing (Count)	2
Percent of Yellow Lines - Non Paint (4 inches)	87.12	<i>Beacons</i>	
Miles of White Lines (4 inches)	872.40	Hazard Identification (Count)	0
Percent of White Lines - Paint (4 inches)	11.85	Intersection (Count)	5
Percent of White Lines - Non Paint (4 inches)	87.71	<i>Flashers</i>	
<i>Special Pavement Markings</i>		Pedestrian (Count)	23
Crosswalks (Count)	1322	School (Count)	50
Stop & Yield (Count)	1872	Traffic Calming (Count)	34
Arrows (Count)	2520	Speed Beacon Flasher(Count)	1
Messages (Count)	519	Street Lights	
Bike Symbols (Count)	75	Total (PAL and SL)	45933
Sharrows (Count)	12	County Owned (Installed)	19828
Traffic Signs (Count)		Leased	25881
Total # of Signs	97453	Private (PAL)	261
Regulatory (Stop, Speed Limit, etc.)	43666	Unknown	6
Warning (Intersection Ahead, Curve, etc.)	14826	<i>Fixture Type (County Owned)</i>	
Street Name Signs Only	28012	Metal-Halide	28
Directional	1478	LED	6704
Other	9122	Mercury Vapor	4903
Neighborhood Traffic Control		Sodium Vapor	8185
	1		
Choker	103		
Circle	30		
Island	162		
Speed Hump	405		

Neighborhood Traffic Control

We work with the community to establish the study, document the results, and to make a conclusion using engineering principles.

Traffic Calming Devices:

- Speed Tables - 405
- Islands - 162
- Chokers - 103
- Circles - 30

Process Guidelines:

https://www.aacounty.org/sites/default/files/2023-04/Traffic_Control_Techniques.pdf



Street Light Program

The Anne Arundel County Streetlight program can be broken up into three major categories:

1. LED Conversion
2. Pole Replacements
3. Security Street Lighting

Maintenance and Installation Provided by BGE

BGE Help Line: 1-800-685-0123

Link:

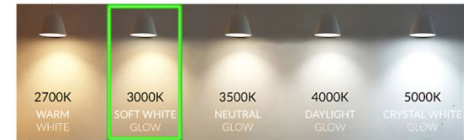
<https://bge.streetlightoutages.com/public/default.html>

LED Colonial Street Light Fixture



- 100/150 Watt Energy Efficient LED
- No acrylic side panels - “Open Concept”
- Light is housed inside of the top of the fixture, illuminating downward
- Comfort lens for reduction of glare and pixelization
- DCL listed “Dark Sky Friendly”
- 3000 Kelvin color temperature

See example below.



Manufactured to ISO standards LM79 & LM80 tested. UL8750 & UL1598 compliant.

DPW & YOU
Making a difference, together.

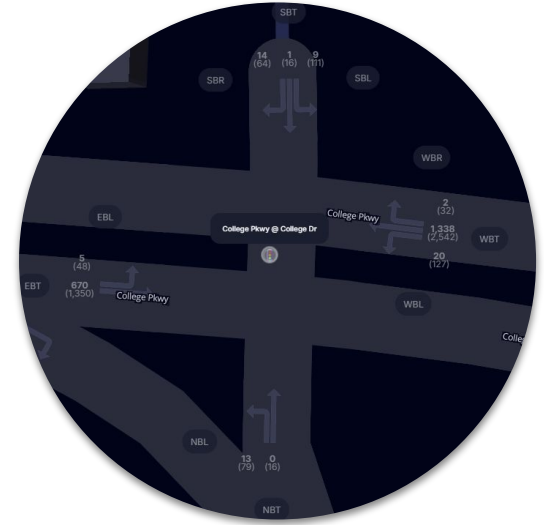
Traffic Data Collection



Radar Counters



Mobile Monitoring Camera

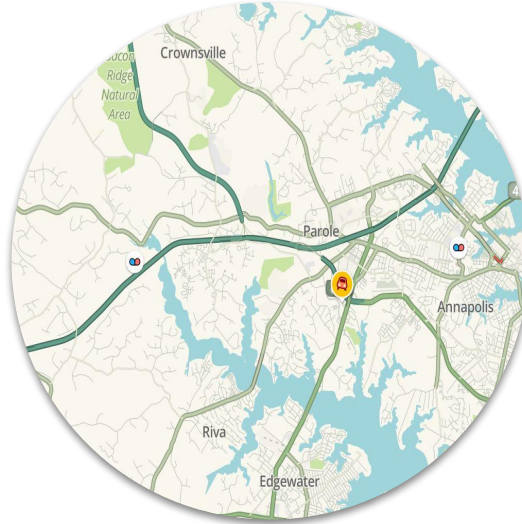


Probe Based Signalized Intersection Data

Monitoring Software



Monitoring Cameras



WAZE - Congestion Alerts



Centracs - Signal Network

Sign Fabrication & Installation



In House Sign Fabrication



Sign Installation & Maintenance

Long Lines & Special Pavement Markings



SPM Installation

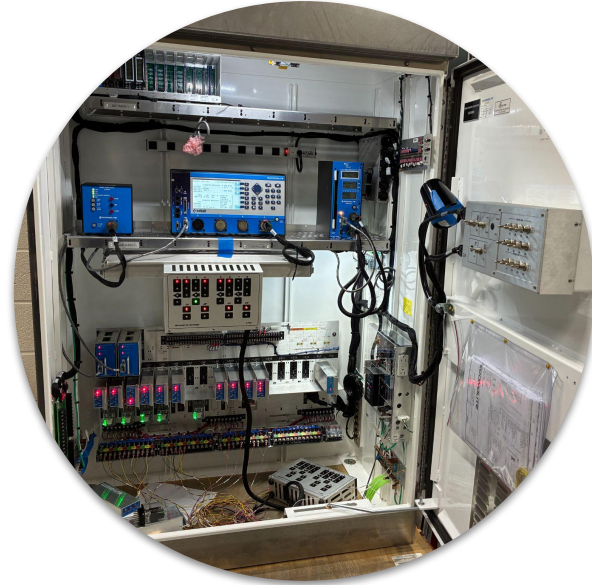


Long Line Installation

Traffic Signal Operations



Traffic Signal Asset Maintenance




Traffic Signal Testing & Optimization

Know Before You Go - (KBYG)

<https://www.aacounty.org/public-works/highways/traffic-engineering-maintenance/traffic-cameras>

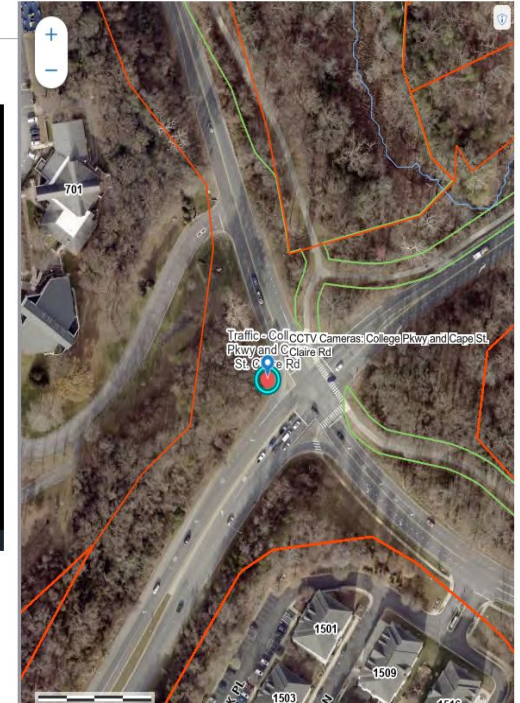
Know Before You Go Legend

College Pkwy and Cape St. Claire Rd



College Pkwy and Cape St. Claire Rd

Back





**DPW
& YOU**

OPEN HOUSE

Saturday May 30th - 10 AM to 2 PM
445 Maxwell Frye Road

FUN FOR ALL!

- ✓ Tour our water storage tower
- ✓ Taste our award-winning water
- ✓ Visit bureau informative booths
- ✓ Touch-A-Truck & much more!



FOLLOW US!

- Facebook @AnneArundelDPW
- Instagram @AnneArundelCountyDPW
- YouTube - Anne Arundel County DPW
- LinkedIn - Anne Arundel County DPW

**Recycle.
More. Often.**

QUESTIONS?
Call 410-222-7582
www.DPWandYOU



DPW & YOU

Follow DPW



FACEBOOK

[@annearundeldpw](#)



YOUTUBE

Anne Arundel County DPW



INSTAGRAM

[@annearundelcountypw](#)



LINKEDIN

Anne Arundel County

Department of Public Works



X

[@AACoDPW](#)



DPW & YOU



Bureau of Utility Operations

24-Hour Emergency Water Service:
(410) 222-8400
Billing Inquiries: (410) 222-1144



Bureau of Waste Management Services

Bulk Trash Service / Curbside Collections: (410) 222-6100



Bureau of Engineering

General Inquiries: (410) 222-7500



Bureau of Highways

General Inquiries: (410) 222-7321
Snow Line: (410) 222-4040
Email: hwyscustomer@aacounty.org



Bureau of Watershed Protection and Restoration

General Inquiries: (410) 222-4240

Customer Relations

General Inquiries: (410) 222-7582
Email: pwcust00@aacounty.org

