



# Plan2040 Implementation Action Committee

October 23, 2025





SECTION 1

# Welcome and Charge

# Welcome, IAC

(One representative from each)

Planning Advisory Board	Human Relations Commission	Board of Education
Transportation Commission	Partnership for Children Youth and Families	Anne Arundel Economic Development Corporation Board
Bicycle Advisory Commission	Recreation Advisory Board	Housing Commission
Citizen's Environmental Commission	Arundel Community Development Services Board	Resilience Authority
Agriculture, Farming and Agritourism Commission	Workforce Development Board	Maritime Industry Advisory Board



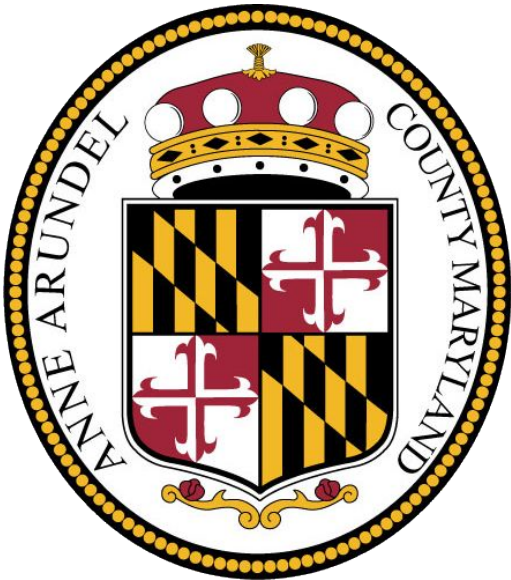
## IMPLEMENTATION ACTION COMMITTEE

# Purpose

*“The successful implementation of Plan2040 depends on a coordinated and collaborative effort of multiple parties, including the County Administration and multiple departments, the County Council, various advisory boards and commissions, and the Plan2040 Implementation Action Committee.”*

- ▶ Monitor the progress of Plan2040
- ▶ Provide guidance to the County Executive, County Council, and County staff on implementation
- ▶ Meet at least once annually and provide recommendations on priorities, funding, and approach to implementing Plan2040

# Agenda



## 1 Welcome and Charge

- Janssen Evelyn,  
*Deputy Chief Administrative  
Officer, County Executive's  
Office*

## 2 Key Performance Indicators and Progress

- Christine Duvall,  
*Long Range Planning, Office of  
Planning and Zoning (OPZ)*

## 3 Group Discussion

- Small groups
- Collective

## 4 Closing

- Andrew Lazara,  
*Long Range Planning,  
OPZ*



SECTION 2

# Key Performance Indicators and Plan2040 Progress

# Implementation Action Committee Priorities



**School  
Capacity**



**Affordable  
Housing**



**Transportation**



**Parks and Open  
Space in  
Underserved Areas**



**Resilient  
Infrastructure**

# Implementation Action Committee Priorities



**School  
Capacity**



**Affordable  
Housing**



**Transportation**



**Parks and Open  
Space in  
Underserved Areas**



**Resilient  
Infrastructure**



**Coordination and  
Collaboration**

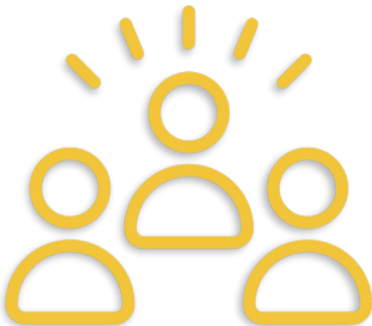
# Plan2040 Overview



Natural Environment



Built Environment



Healthy Community



Healthy Economy

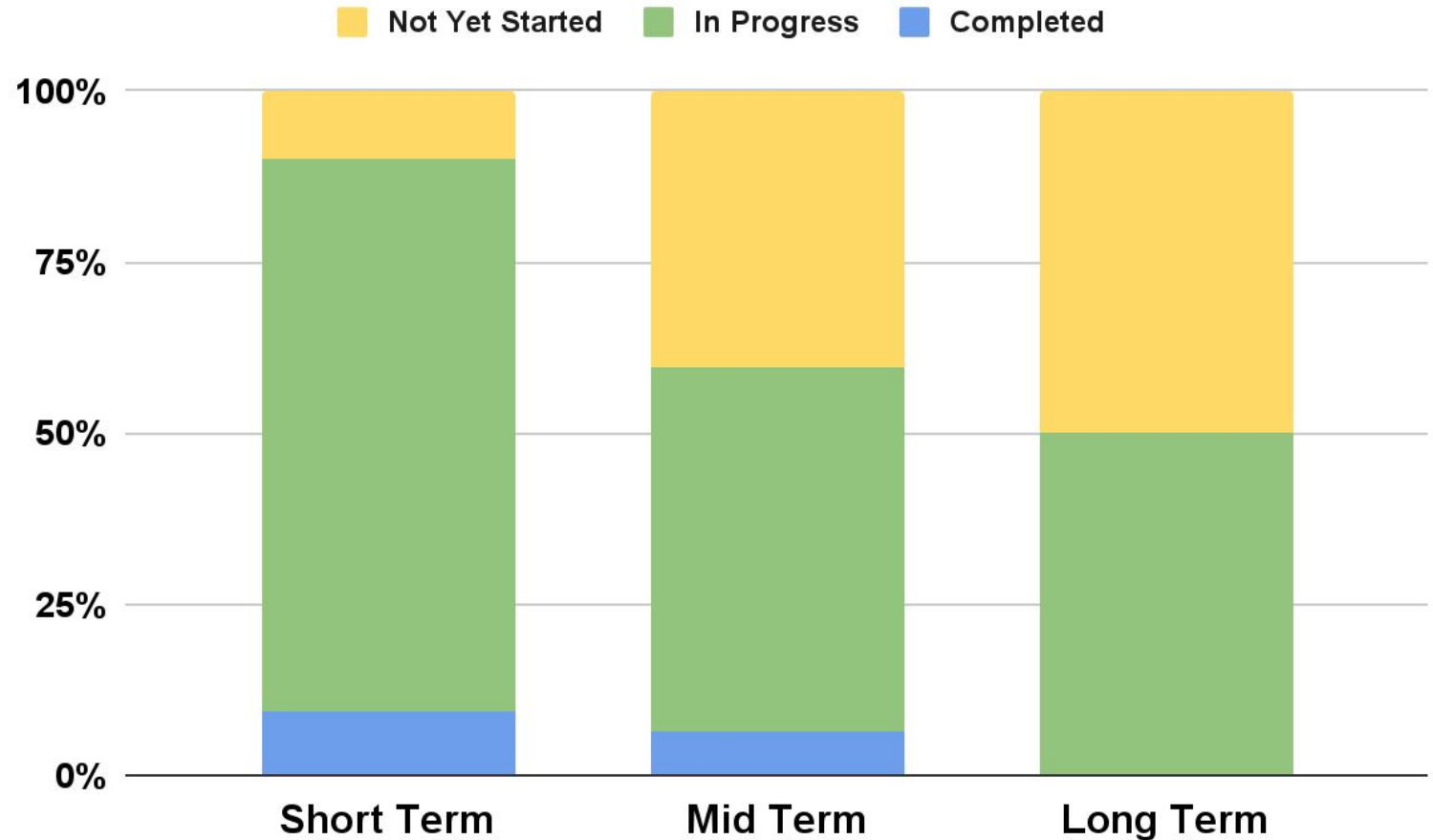
## ***General Development Plan***

- Countywide Policy Document
- Key Themes
  1. Smarter
  2. Greener
  3. More Equitable
- Goals, Policies, and Strategies

**[aacounty.org/Plan2040](http://aacounty.org/Plan2040)**

# Progress CY2024

86% of all  
Plan2040  
Strategies are  
**In Progress** or  
**Completed**.





#### Land Stewardship



#### Vegetation



#### Water and Soils



# 233 acres

of farm and forest conserved

through easements in 2024. Total of 14,616 acres protected by easements through Agricultural and Woodland Preservation Program.

# 3,500 trees

planted in 2024

by Watershed Stewards Academy volunteer projects.

# 3,073 acres

of impervious surfaces treated

with stormwater best management practices (exceeds the requirement under the current MS4 permit)

# 154 upgrades

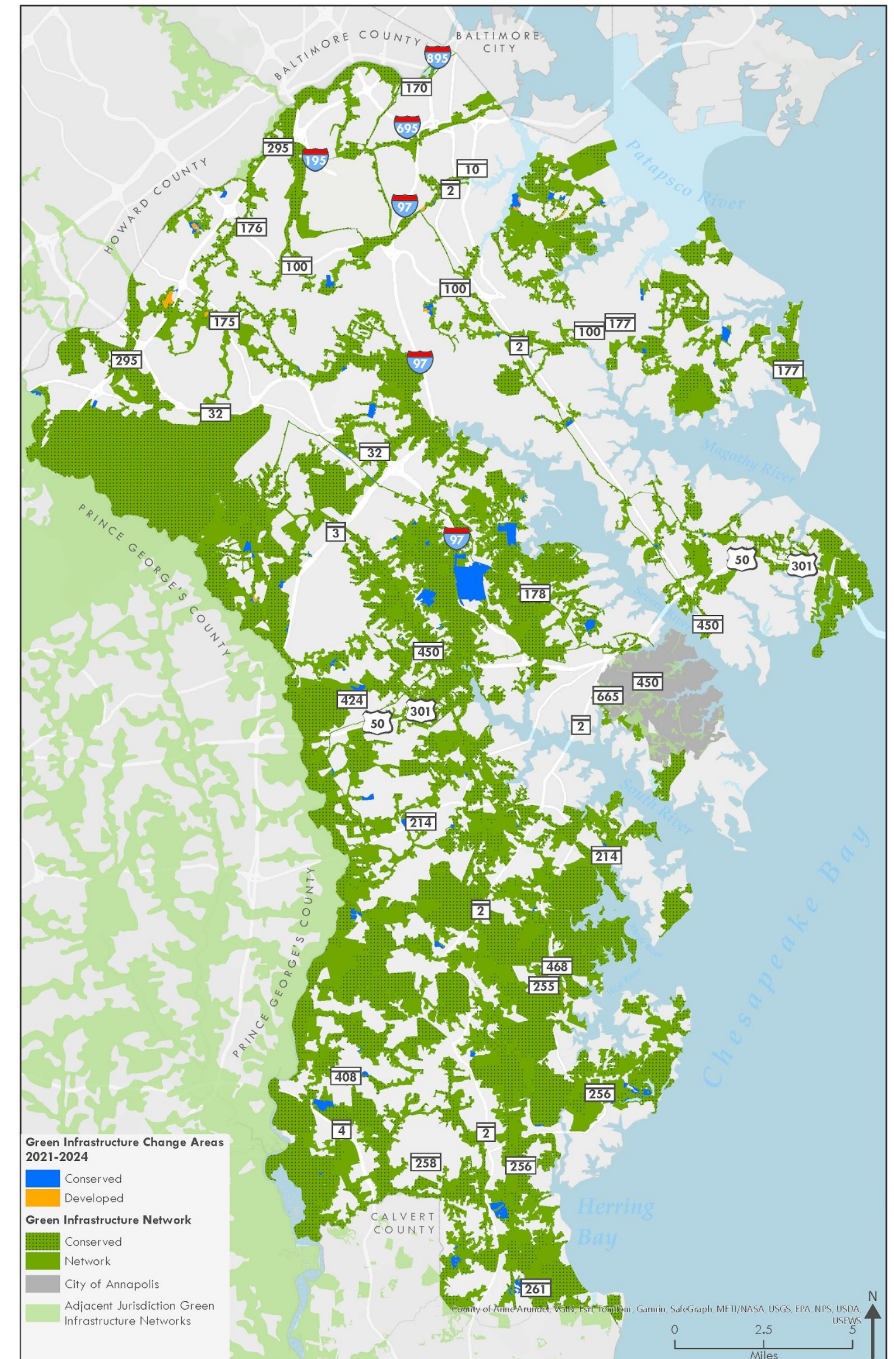
septic systems upgraded in 2024

to reduce nitrogen pollution and 13 septic systems were converted and connected to sewer systems.

# Natural Environment

## NE3: Protect greenways, open space, and rural areas.

- ▶ Over 435 acres conserved in Green Infrastructure Network in 2024
- ▶ Over 1,775 acres conserved since Jan 1, 2020 - goal of 5,000 acres by 2030



# Natural Environment

## NE6: Create resilient and sustainable communities

- ▶ Resilience Authority
- ▶ Sea Level Rise Risk Assessment
- ▶ Roadway Vulnerability Assessment
- ▶ Shady Side - Deale Adaptation Study





# More Mitigation Measures, More Savings



**One dollar invested in mitigation =  
six dollars U.S. saves in future costs**



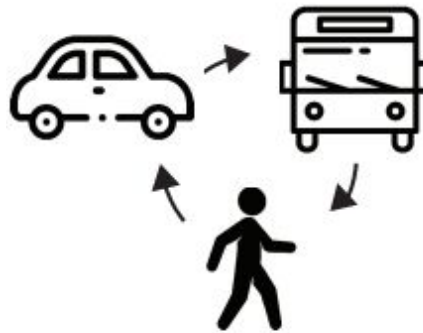
# Built Environment



Residential  
Development



Transportation



## 963 residential building permits

issued in 2024

47% within the Targeted Growth Area  
and 98% in Priority Funding Areas

## 644 residential units

approved in final subdivision plans in 2024

4% inside Targeted Growth Areas  
and 99% in Priority Funding Areas

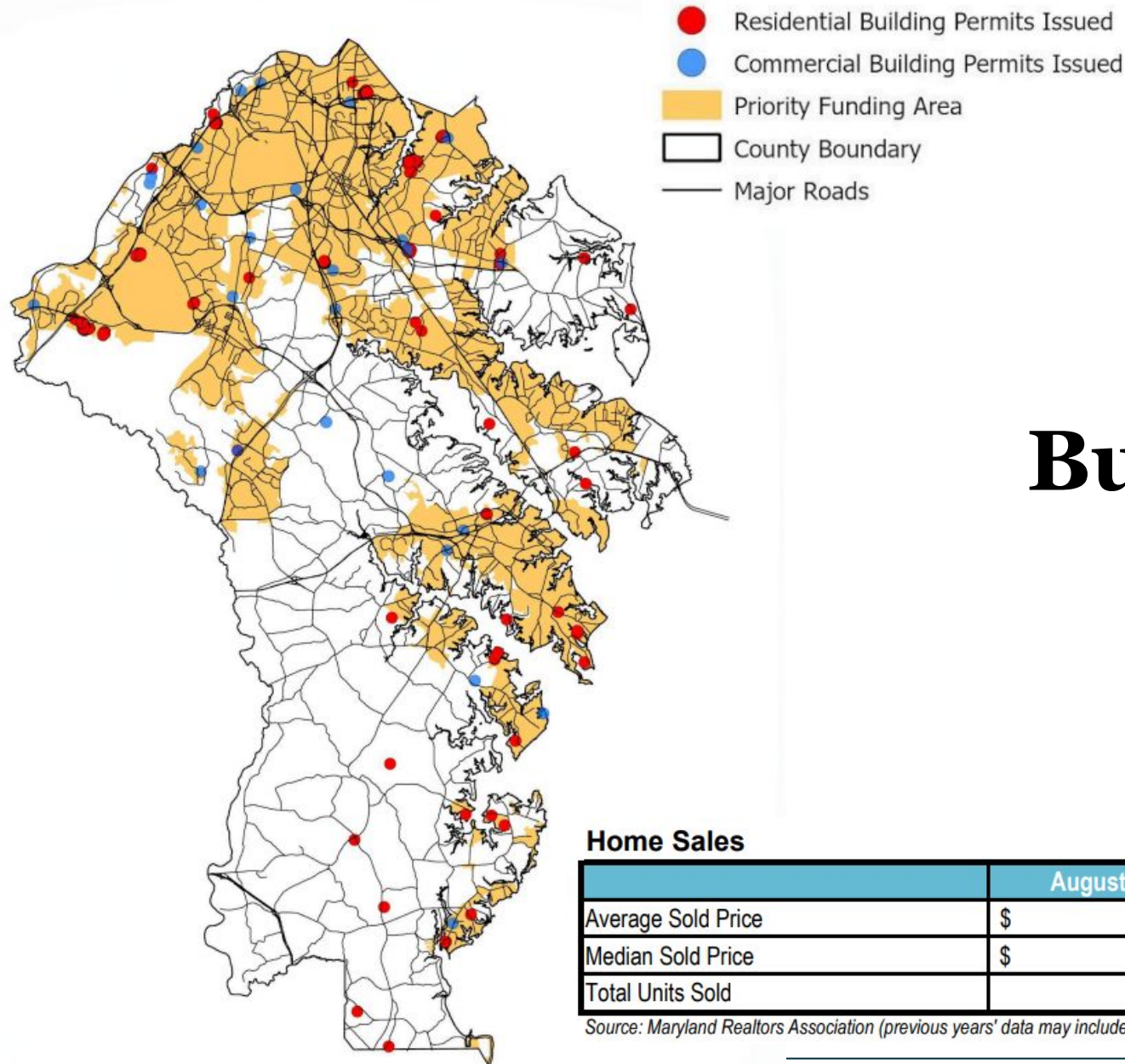
## 5.9 Million VMT

(Vehicle Miles Travelled) in Anne Arundel County

in 2023, according to the MDOT State Highway  
Administration 2023 Annual Report. This was a 5%  
decrease from 6.2 Million in 2019.

## 95% on time

performance for transit routes in 2024



## Commercial and Residential Building Permits 2024

### Home Sales

	August 2025	August 2024	August 2023	% Change 2024-2025
Average Sold Price	\$ 620,159	\$ 575,024	\$ 555,738	7.8%
Median Sold Price	\$ 502,783	\$ 487,511	\$ 475,000	3.1%
Total Units Sold	680	697	697	-2.4%

Source: Maryland Realtors Association (previous years' data may include revisions)

Source: Annual Development Measures And Indicators Report By The Planning Advisory Board (2024)

# Healthy Communities



## Emergency Response



**3.9 minutes**

Emergency Response Time

for Priority 1 calls that reach the Anne Arundel Police Department (4.0 minutes target)

## Education



**9 of 111 schools**

at or above capacity

based on School Utilization Chart adopted by County Council September 2024, compared to 31 of 109 schools at or above capacity in 2022

## Libraries



**0.44 square feet**

of library space per capita

with the target being 0.5 square feet of Gross Floor Area (GSF). County libraries also have an 88% customer satisfaction rating.

## Parks



**11,940 acres**

of public park land

with the target being 12,330 acres by 2040

## Senior Centers

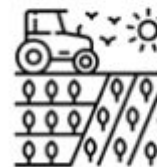


**162,466 visits**

to Senior Activity Centers in fiscal year 2024

on track to reach the goal of 300,000 annual visits by 2028

# Healthy Economy



## 2.8% unemployment

The unemployment rate in November 2024 was above the 1.8% for November 2023, but is lower than the State unemployment rate of 3.1%.

### Vacancy Rates

Commercial Property Type	December 2023	December 2024
Office	7.0%	7.5%
Flex	5.4%	8.4%
Industrial	4.0%	6.9%
Retail	4.3%	3.3%

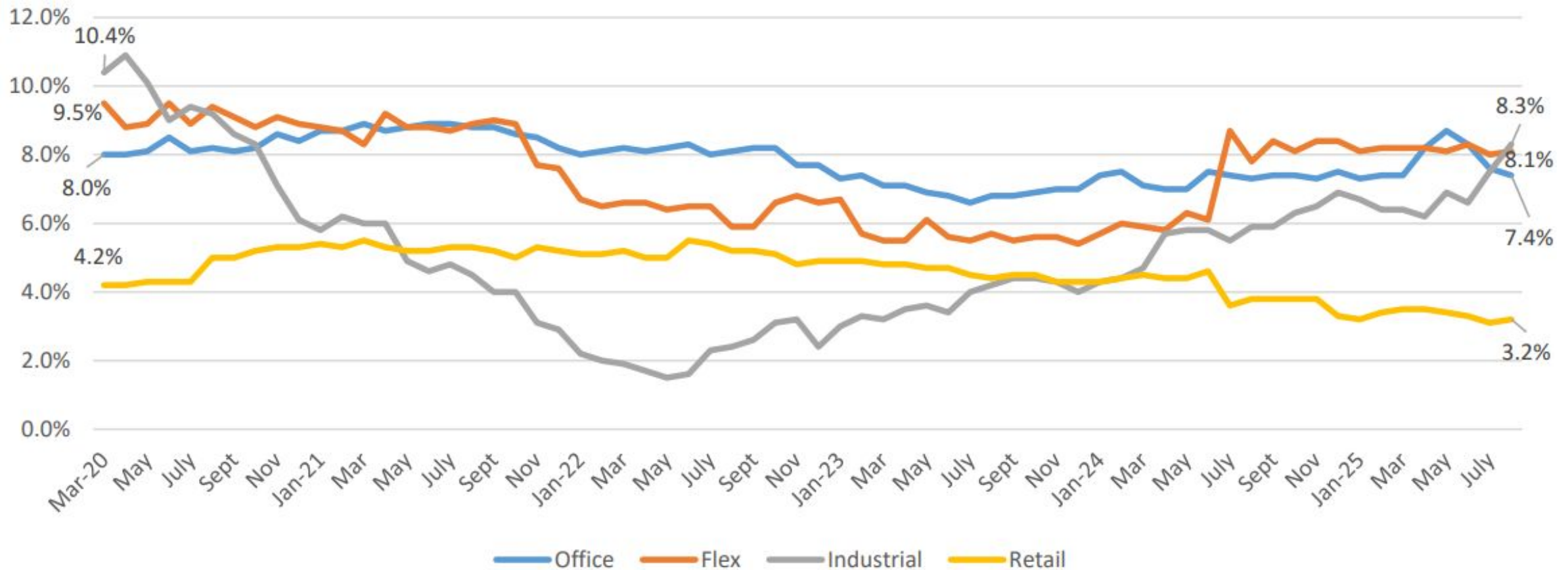
## 36 loans for \$3.5M

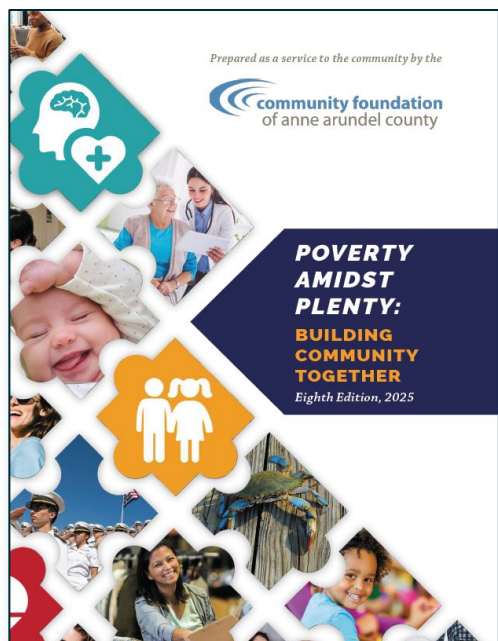
closed by AAEDC in 2024  
to support local businesses

# Healthy Economy



## COMMERCIAL VACANCY RATES (March 2020 - August 2025)



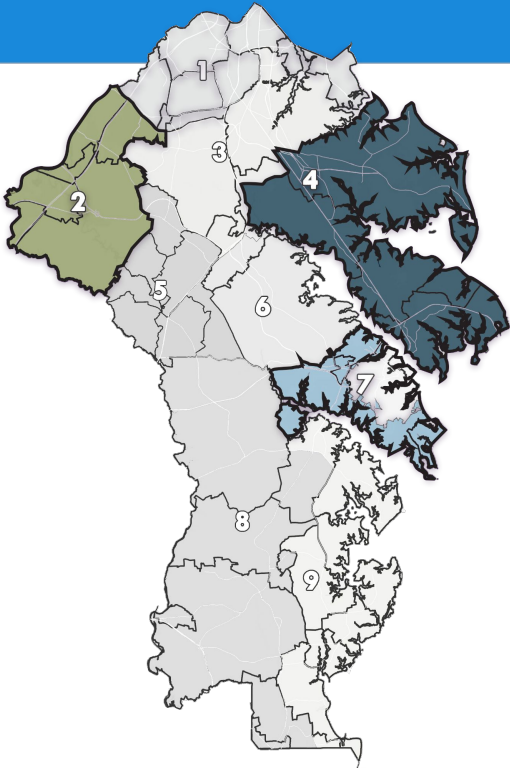


**Table 9: Living Wage Calculator Comparison, Anne Arundel County, 2019 and 2024**

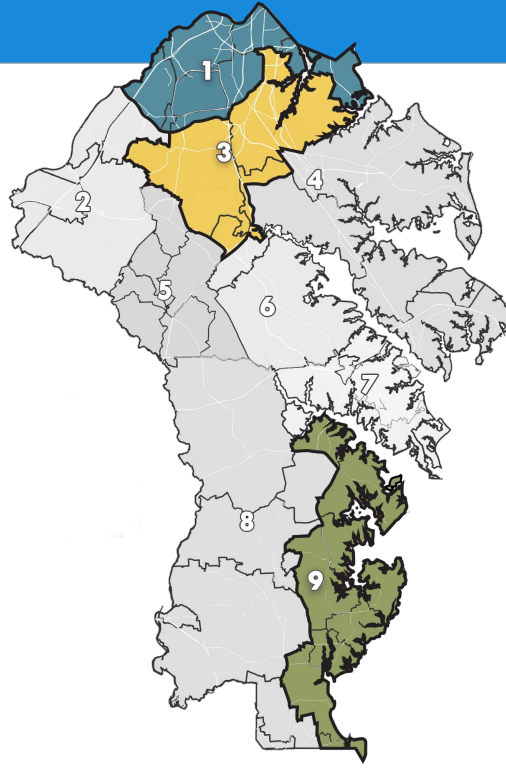
	1 Adult				2 Adults (1 Working)				2 Adults (Both Working)			
	0 Child- ren	1 Child	2 Child- ren	3 Child- ren	0 Child- ren	1 Child	2 Child- ren	3 Child- ren	0 Child- ren	1 Child	2 Child- ren	3 Child- ren
2019												
Living Wage	\$15.84	\$34.18	\$41.52	\$55.16	\$25.81	\$31.22	\$34.81	\$37.85	\$12.19	\$18.47	\$23.13	\$27.67
Poverty Wage	\$6.13	\$8.29	\$10.44	\$12.60	\$8.29	\$10.44	\$12.60	\$14.75	\$4.14	\$5.22	\$6.30	\$7.38
Minimum Wage	\$11.00	\$11.00	\$11.00	\$11.00	\$11.00	\$11.00	\$11.00	\$11.00	\$11.00	\$11.00	\$11.00	\$11.00
2024												
Living Wage	\$26.90	\$45.69	\$56.55	\$73.70	\$36.02	\$43.81	\$48.33	\$53.42	\$18.00	\$25.03	\$30.44	\$36.38
Poverty Wage	\$7.24	\$9.83	\$12.41	\$15.00	\$9.83	\$12.41	\$15.00	\$17.59	\$4.91	\$6.21	\$7.50	\$8.79
Minimum Wage	\$15.00	\$15.00	\$15.00	\$15.00	\$15.00	\$15.00	\$15.00	\$15.00	\$15.00	\$15.00	\$15.00	\$15.00
% Comparison of Living Wage												
	69.82%	33.67%	36.20%	33.61%	39.56%	40.33%	38.84%	41.14%	47.66%	35.52%	31.60%	31.48%

Source: Massachusetts Institute of Technology, Living Wage Calculator 2019 & 2024

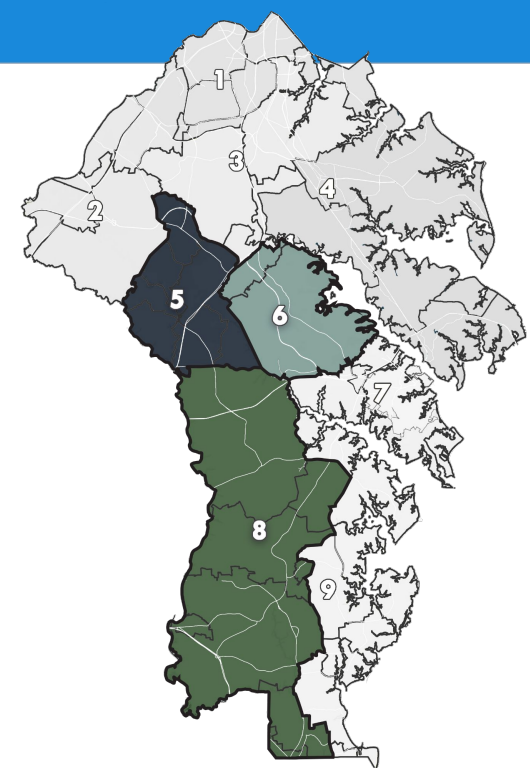
# Region Plans



**Round 1**  
Regions 2, 4, 7



**Round 2**  
Regions 1, 3, 9



**Round 3**  
Regions 5, 6, 8

# Status of Region Plans



**Round 1**  
Regions 2, 4, 7

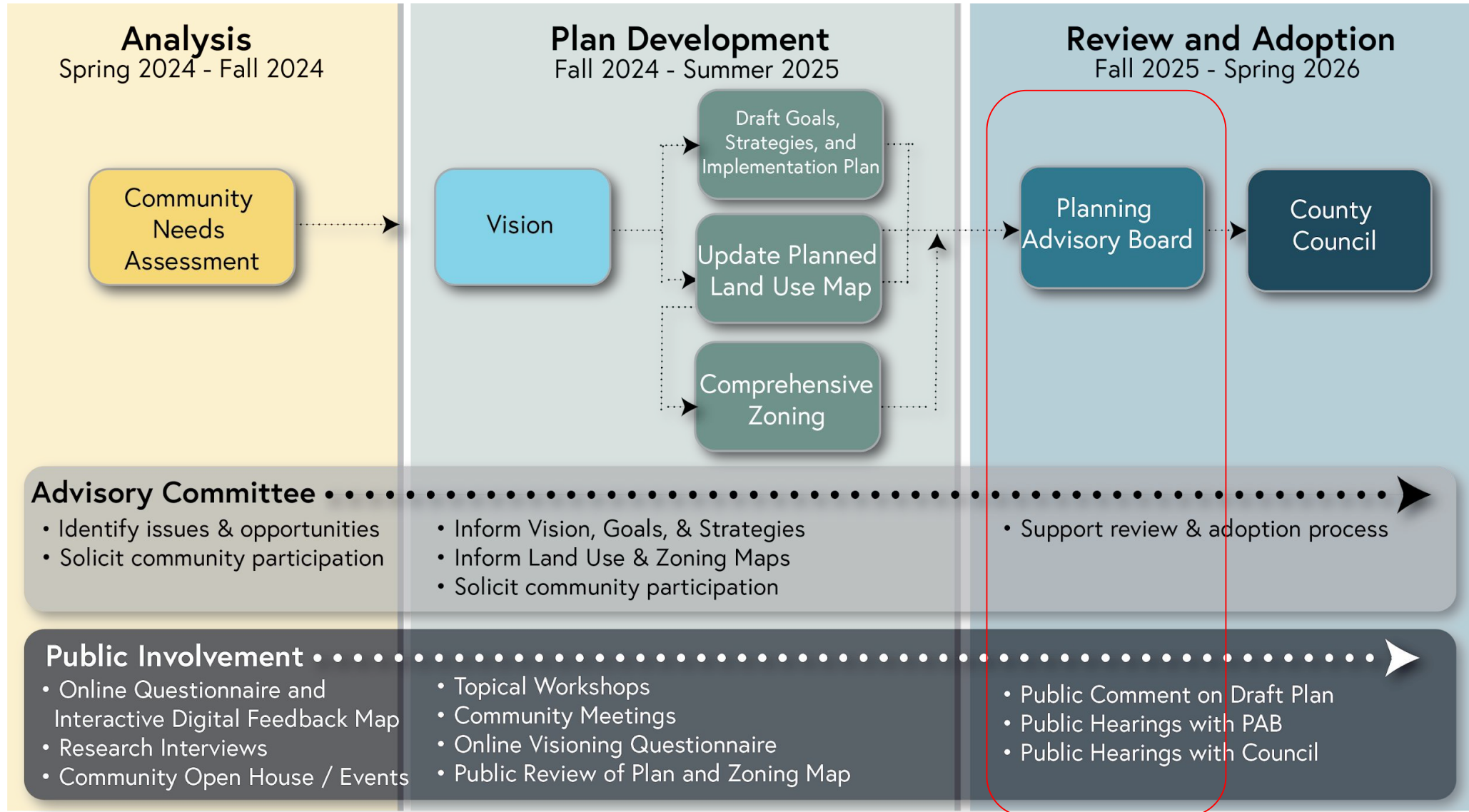


**Round 2**  
Regions 1, 3, 9



**Round 3**  
Regions 5, 6, 8

# Timeline - Regions 5, 6, 8





SECTION 3

# Group Discussion



SECTION 4

# Closing



The meeting is adjourned.

**Thank you!**



**Read the Plan2040  
Annual Report and  
review progress snapshots  
since 2021 at  
[aacounty.org/  
Plan2040.](https://aacounty.org/Plan2040)**