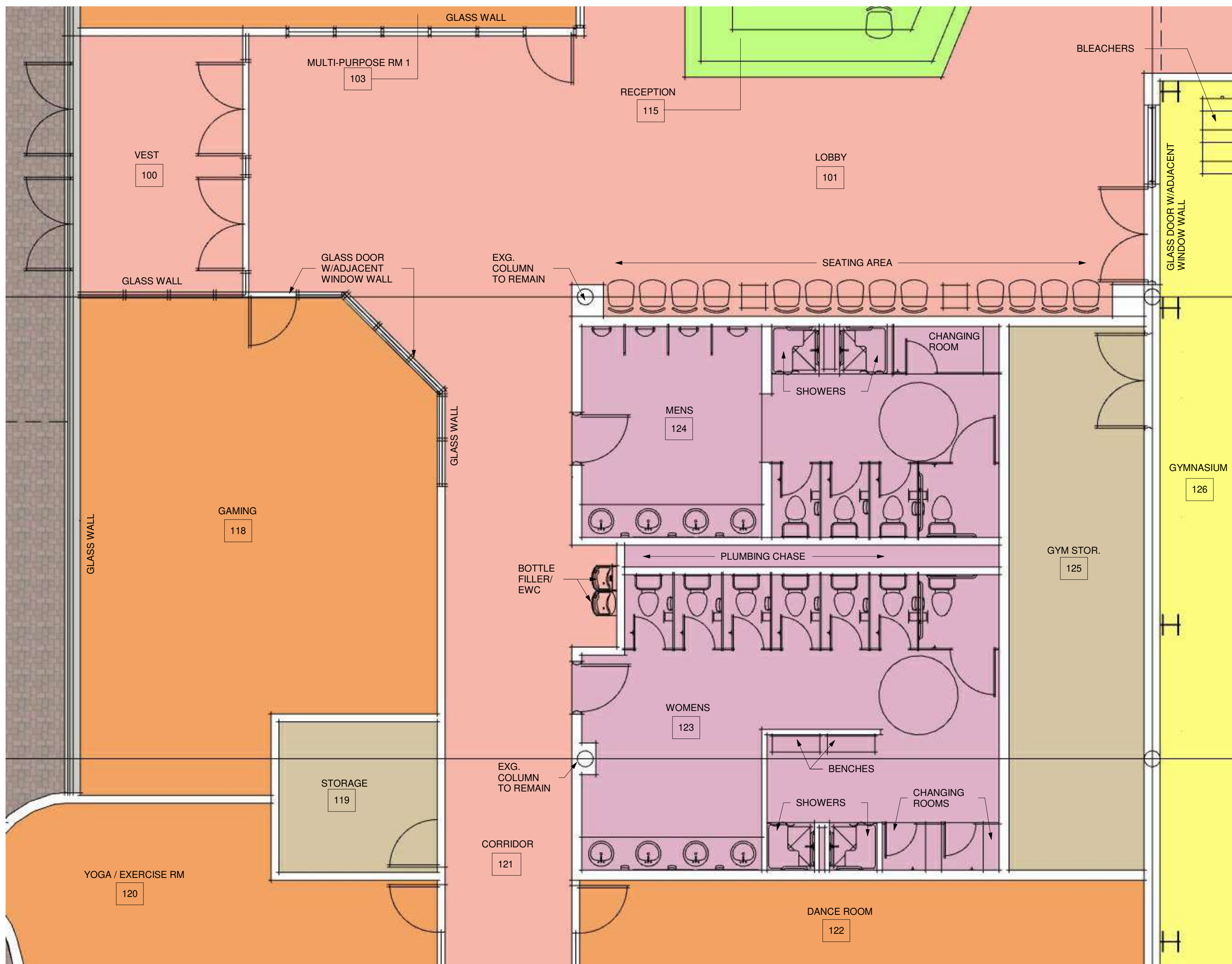
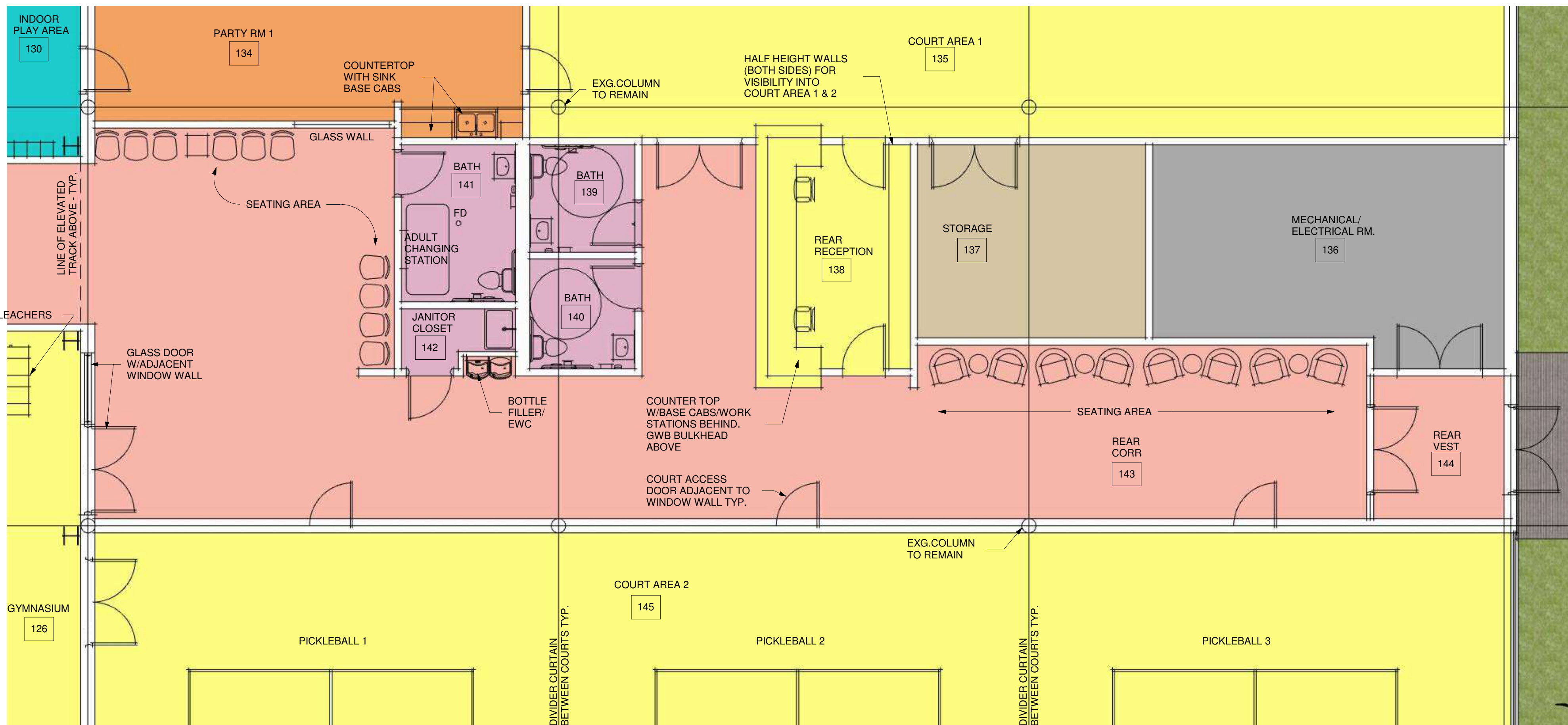


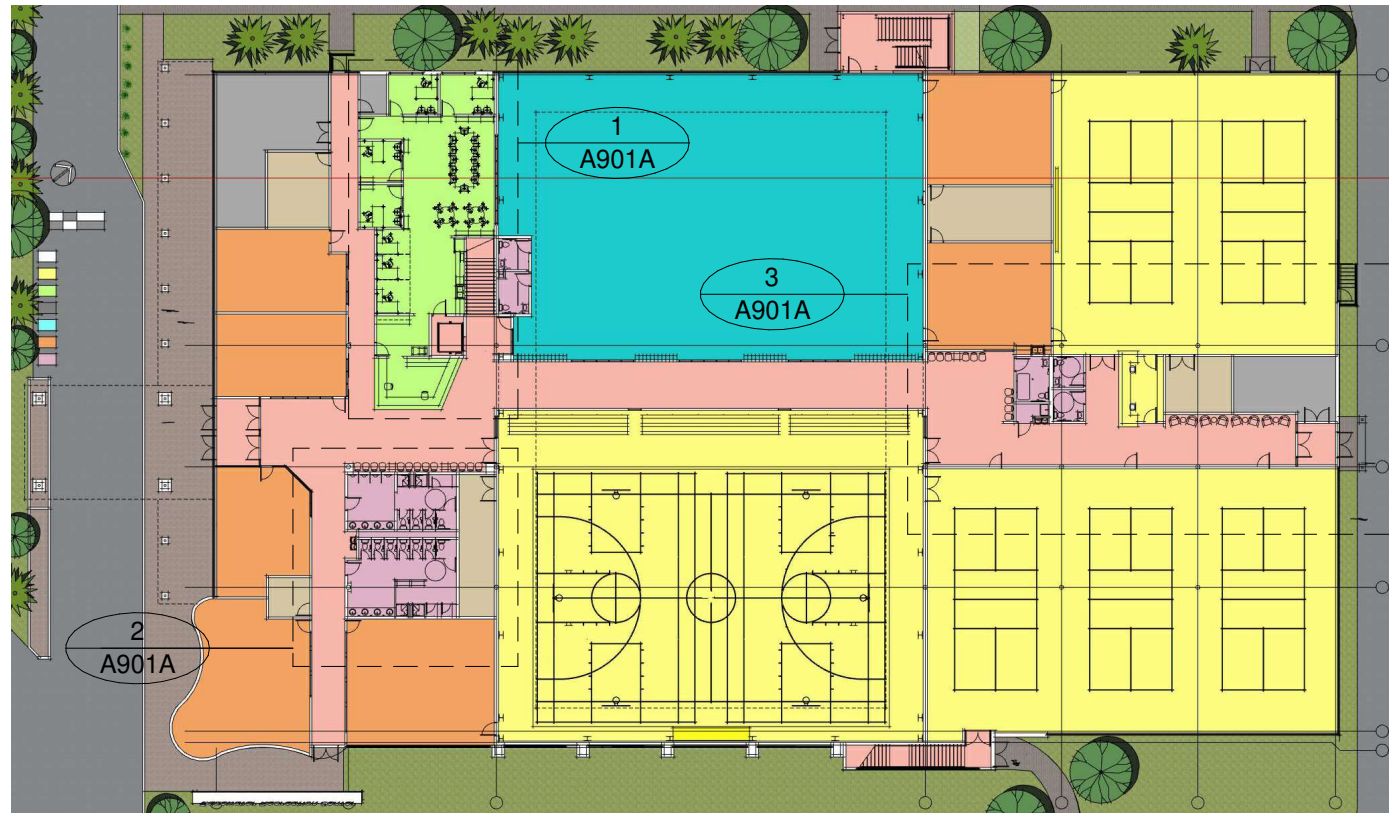
1 - ENLARGED FLOOR PLAN @ LOBBY/OFFICE WING



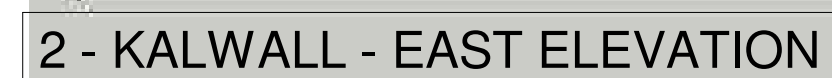
2 - ENLARGED FLOOR PLAN @ BATHROOM CORE



3 - ENLARGED FLOOR PLAN @ REAR CORRIDOR



KEY PLAN

ARCHITECTURE
ENGINEERINGDelaware

Delaware
309 S Governors Ave
Dover, DE 19904
302.734.7950
The Tower at STAR Campus
10 Discovery Boulevard, Suite 102
Newark, DE 19713
302.369.3700

Maryland

312 West Main St, Suite 300
Salisbury, MD 21801
410.546.9100

South Carolina

3333 Jaeckle Drive, Suite 120
Wilmington, NC 28403
910.341.7600

ckermorgan.co

MORABITO CONSULTANTS, INC.
STRUCTURAL ENGINEER

952 RIDGEBROOK ROAD, SUITE 1700
SPARKS, MARYLAND 21152
410-467-2377

ALLEN + SHARIFF
MEP ENGINEERING
PROJECT MANAGEMENT
205 EAST MARKET STREET
SALISBURY, MARYLAND 21801
443-545-1300

McCRONE ENGINEERING
CIVIL ENGINEERING
LAND SURVEYING
20 RIDGELY AVENUE
ANNAPOLIS, MARYLAND 21401
410-267-6947



PROJECT TITLE

EDGEWATER
RECREATION
CENTER

3130 SOLOMONS ISLAND ROAD
EDGEWATER, MD 21037

PRELIMINARY

DESIGN CONCEPT ONLY, SUBJECT
FURTHER REVISIONS, NOT FOR
CONSTRUCTION NOT FOR
PERMITS

ISSUED: XX/XX/XX

SHEET TITLE

SECOND FLOOR & ROOF PLAN - RENDERED VIEWS

[illegible]

PROJECT NO:	2025272
DATE:	12.22.20

SCALE:	
DRAWN BY: WES	PROJ MGR: W

A902

COPYRIGHT © 2023

2/22/2025 3:22:19 PM Autodesk Docs://Edgewater Rec Center/202527200_OptionC.mt

2 - NORTH ELEVATION RENDERING

1. EXTERIOR WALL SYSTEM TYPE 1- NEW METAL WALL PANEL OVER FURRING STRIPS AND SPRAY FOAM INSULATION AND AIR & VAPOR BARRIER OVER EXISTING CONCRETE WALL. SEE BASIS OF DESIGN PRODUCT COMPONENTS BELOW:
WALL PANEL: PAC-CLAD - BOX RIB WALL PANEL "HIGHLINE SYSTEM" - 12" WIDTH
INSULATION (MIN.R VALUE =19.7): BASF WALLTITE σ 3" THICK ATLAS ENERGY SHIELD
AIR & VAPOR BARRIER : W.R.MEADOWS AIR SHIELD L.M.

3. CAST STONE MASONRY SILL - 4" WITH CHAMFERED EDGE PROFILE. TOP OF SILL @ 3'-8" A.F.F.
4. MASONRY OR STONE VENEER WATERBATE, TOP COURSE @ 3'0" A.F.F. BASIS OF DESIGN: WESTLAKE CULTURED STONE - CAST FIT LARGE FORMAT (8" X 16") COLOR: CARBON
4. METAL FASCIA - BASIS OF DESIGN: PAC-CLAD - "PAC-TITE WT EXTENDED FASICA" USE 8" PROFILE AT EXISTING AND NEW MASONRY STAIR TOWER/ELEVATOR TOWERS.
6. WALL SOUNGE - BASIS OF DESIGN: MAXIM LIGHTING - CIVIC OUTDOOR LED WALL SOUNGE #16173081 QUANTITIES PER SCHEDULE
6. ALUMINUM STOREFRONT WINDOW TYPE "A" - 15'-6" (w) X 10'-0" (h) HEAD HEIGHT +/- 15'-0" A.F.F. WINDOW INCLUDES TRANSLUCENT PANEL BETWEEN UPPER AND LOWER FRAMES
7. MASONRY TOWER & ELEVATOR AND STAIR #1) - T.O.M. 33'-4" A.F.F. - ELEVATOR TOWER, T.O.M. 30'-8" STAIR TOWER.
8. CONCRETE STAIR W/ALUMINUM RAILINGS. NUMBER OF RISERS VARIES PER SITE LOCATION
9. STOREFRONT DOOR/WINDOW SYSTEM "SF-1": ROUGH OPENING 9'-4" (w) X 12'-0" (h). BASIS OF DESIGN: KAWNEER - TRIFAB 451 UT. 9B. SF-2 - SAME BASIS OF DESIGN AS SF-1 BUT ROUGH OPENING 14'-0" (w) X 12'-4" (h).
10. ALUMINUM HANGER ROD CANOPY "11": 4" (w) X 4'-0" (d) - BASIS OF DESIGN: MAPES
11. TRANSLUCENT WALL PANEL SYSTEM - SIZE VARIED AS INDICATED ON ELEVATIONS - BASIS OF DESIGN: KALWALL
12. LOW SLOPE ROOF WITH METAL FASCIA - TPO BASIS OF DESIGN: FIRESTONE ULTRAPLY TPO .080" THICK WITH PAC-CLAD - "PAC-TITE WT EXTENDED FASICA" 13" PROFILE
13. SURFACE MOUNTED CAST SIGNAGE/LOGO. ROUGH DIMENSIONS 8' x 8'. PROVIDE WET REATED STRIP LED UP LIGHT
14. TUBE COLUMN & METAL RAFTER TAIL AT EACH PIER TO NEW STRUCTURE - SEE STRUCTURAL DRAWINGS.
15. METAL SOFFIT WITH OVERHANGS AS FOLLOWS: HIGH BEARING - (FRONT - 6'-0"), LOW BEARING (REAR - 2'-0"), SIDES - 2'-0". BASIS OF DESIGN: PAC-CLAD PVDF TIMBER SERIES - WOOD GRAIN FINISHES.
16. CAST LETTER SIGNAGE - 24" HIGH. BASIS OF DESIGN AND FONT TBD
17. MASONRY TOWER - 40'-0" (l) X 20' (h) WITH BASIS OF DESIGN MATERIALS SIMILAR TO KEYNOTE #2 & #3 17B. MASONRY WALL W/ INTEGRAL SYNTHETIC WOOD SLAT SEATING 12'-0" (l) X 1'-0" (h)
18. ALUMINUM STOREFRONT WINDOW TYPE "B" - 15'-6" (w) X 13'-0" (h) HEAD HEIGHT +/- 18'-0" A.F.F. WINDOW INCLUDES TRANSLUCENT PANEL BETWEEN UPPER AND LOWER FRAMES
19. ALUMINUM STOREFRONT WINDOW TYPE "C" - 15'-6" (w) X 6'-8" (h) HEAD HEIGHT +/- 14'-8" A.F.F. OF WALKING TRACK.
20. CURVED ROOF CANOPY WITH 24" DEEP METAL FASCIA AND METAL SOFFIT. SOFFIT INCLUDES LED DOWNLIGHTS AND TPO MEMBRANE ABOVE. ALL BASIS OF DESIGN MATERIALS PAC-CLAD OR FIRESTONE AS NOTED IN ITEM #4 & #12 ABOVE.
21. CURVED ALUMINUM STOREFRONT WINDOW SYSTEM. HEAD HEIGHT 15'-0" A.F.F. BASIS OF DESIGN SIMILAR TO #9 ABOVE
22. TUBE COLUMN WITH ALUMINUM COVER - SEE ALSO STRUCTURAL DRAWINGS
23. ANGLED TUBE COLUMN WITH ALUMINUM COVER
24. REINFORCED CONCRETE PIER (48" HIGH) WITH CHAMFERED SIDES AND CAST STEEL CONNECTION FOR COLUMN
25. ALUMINUM STOREFRONT WINDOW TYPE "D" - 8'-8" (w) X 8'-8" (h) HEAD HEIGHT 12'-8" A.F.F (1ST FLOOR) & 12'-8" A.F.F. @ SECOND FLOOR STAIR TOWER.
26. METAL GUTTER, ROOF LEADER AND OVERFLOW SCUPPER WITH PAINTED CAST IRON BOOT BASE AND TIE IN TO UNDERGROUND STORMWATER SYSTEM. SEE ALSO CIVIL DRAWINGS
27. PORTE COCHERE -BASIS OF DESIGN AS FOLLOWS: 3' X 3' MASONRY PIERS (TOM 14'-8") WITH TUBE STEEL COLUMNS/ALUM COVER HEIGHT OF HIGH BEAM BRG 21'-0". HEIGHT OF LOW BEAM BRG 20'-0". CLEARANCE TO UNDERSIDE OF BEAM (LOW) 19'-0". ALL FINISH MATERIALS SIMILAR TO REST OF BLDG.
28. SIGNAGE - BASIS OF DESIGN: SIGNAGE SYSTEMS - CANOPY WIDTH 12'-0" (w) X 8'-0" (h) WITH TUBE STEEL COLUMNS/ALUM COVER SPACED AT +/-13'-4" O.C. ALL FINISH MATERIALS SIMILAR TO REST OF BLDG.
29. NEW POLE SIGN IN EXISTING SIGN LOCATION. SIGN 35'-0" TO HIGHEST POINT WITH DOUBLED SLED ELECTRONIC MESSAGE BOARD (12'-0" high X 16'-0" wide - 192 SOFT) ON EACH SIDE.
30. ALUMINUM STOREFRONT WINDOW TYPE "E" - 15'-6" (w) X 8'-8" (h) HEAD HEIGHT +/- 13'-8" A.F.F. WINDOW INCLUDES TRANSLUCENT PANEL AT UPPER FRAMES

This architectural elevation drawing shows a section of a building facade. The main wall is clad in blue vertical siding. A white horizontal trim band runs across the middle of the facade, separating the upper and lower window sections. The base of the building is finished with grey stone or concrete blocks. The roof is dark brown. Two large, multi-paned windows are the central focus, each with a white frame and a grid of panes. To the left and right of these central windows are smaller, narrower windows. On either side of the central window unit, there is a white vertical pillar or column. Small black light fixtures are mounted on these pillars. Numerous black arrows are drawn across the drawing, pointing to various architectural elements such as the roof, siding, trim, windows, and pillars, likely for identification purposes in a design document.

1 - EAST ELEVATION RENDERING



2 - PARTIAL SOUTH ELEVATION RENDERING



3 - PARTIAL NORTH ELEVATION RENDERING



EXTERIOR MATERIALS LEGEND

1. EXTERIOR WALL SYSTEM TYPE 1- NEW METAL WALL PANEL OVER FURRING STRIPS AND SPRAY FOAM INSULATION AND AIR & VAPOR BARRIER OVER EXISTING CONCRETE WALL. SEE BASIS OF DESIGN PRODUCT COMPONENTS BELOW:
WALL PANEL: PAC-CLAD - BOX RIB WALL PANEL " HIGHLINE SYSTEM" - 12" WIDTH
INSULATION (MIN R VALUE =19.7) - BASF WALLTITE or 3" THICK ATLAS ENERGY SHIELD
AIR & VAPOR BARRIER : W.R.MEADOWS AIR SHIELD L.M.
2. CAST STONE MASONRY SILL - 4" WITH CHAMFERED EDGE PROFILE. TOP OF SILL @ 3'-8" A.F.F.
3. MASONRY OR STONE VENEER WATERTABLE. TOP COURSE @ 3'0" A.F.F. BASIS OF DESIGN: WESTLAKE CULTURED STONE - CAST FIT LARGE FORMAT (8" X 16") COLOR: CARBON
4. METAL FASCIA - BASIS OF DESIGN: PAC-CLAD - "PAC-TITE WT EXTENDED FASICA" USE 8" PROFILE AT EXISTING AND NEW MASONRY STAIR TOWER/ELEVATOR TOWERS.
5. WALL SCONCE - BASIS OF DESIGN: MAXIM LIGHTING -CIVIC OUTDOOR LED WALL SCONCE ITEM #MXL617394, QUANTITIES PER DWGS
6. ALUMINUM STOREFRONT WINDOW TYPE "A" - 15'-6" (w) x 10'-0" (h) HEAD HEIGHT +/- 15'-0" A.F.F. WINDOW INCLUDES TRANSLUCENT PANEL BETWEEN UPPER AND LOWER FRAMES
7. MASONRY TOWER (& ELEVATOR AND STAIR #1) - T.O.M. 33'-4" A.F.F. - ELEVATOR TOWER, T.O.M. 30'-8" STAIR TOWER.
8. CONCREATE STAIR /ALUMINUM RAILINGS. NUMBER OF RISERS VARIES PER SITE LOCATION
9. STOREFRONT DOOR/WINDOW SYSTEM "SF-1". ROUGH OPENING 9'-4" (w) x 12'-0" (h). BASIS OF DESIGN: KAWNEER - TRIFAB 451 UT
10. ALUMINUM HANGER ROD CANOPY - 11'- 4" (w) x 4'-0" (d) - BASIS OF DESIGN - MAPES
11. TRANSLUCENT WALL PANEL SYSTEM - SIZE VARIES AS INDICATED ON ELEVATIONS - BASIS OF DESIGN: KALWALL
12. LOW SLOPE. ROOF WITH METAL FASCIA - TPO BASIS OF DESIGN: FIRESTONE ULTRAPLY TPO .080" THICK WITH PAC-CLAD - "PAC-TITE WT EXTENDED FASICA" 13" PROFILE
13. SURFACE MOUNTED CAST SIGNAGE/LOGO/GRAPHIC. ROUGH DIMENSIONS 8' x 8'. PROVIDE WET REATED STRIP LED UP LIGHT
14. TUBE COLUMN & METAL RAFTER TAIL AT EACH PIER TO NEW STRUCTURE - SEE STRUCTURAL DRAWINGS.
15. METAL SOFFIT WITH OVERHANGS AS FOLLOWS: HIGH BEARING - (FRONT - 6'-0"), LOW BEARING (REAR - 2'-0"), SIDES - 20". BASIS OF DESIGN: PAC-CLAD PVOF TIMBER SERIES - WOOD GRAIN FINISHES.
16. CAST LETTER SIGNAGE - 24" HIGH. BASIS OF DESIGN AND FONT TBD
17. MASONRY WALL - 40'-0" (l) x 2'-0" (h) WITH BASIS OF DESIGN MATERIALS SIMILAR TO KEYNOTE #2 & #3
18. ALUMINUM STOREFRONT WINDOW TYPE "B" - 15'-6" (w) x 13'-0" (h) HEAD HEIGHT +/- 18'-0" A.F.F. WINDOW INCLUDES TRANSLUCENT PANEL BETWEEN UPPER AND LOWER FRAMES
19. ALUMINUM STOREFRONT WINDOW TYPE "C" - 15'-6" (w) x 6'-8" (h) HEAD HEIGHT +/- 14'-8" A.F.F. OF WALKING TRACK.
20. CURVED ROOF CANOPY WITH 24" DEEP METAL FASCIA AND METAL SOFFIT. SOFFIT INCLUDES LED DOWNLIGHTS AND TPO MEMBRANE ABOVE. ALL BASIS OF DESIGN MATERIALS PAC-CLAD OR FIRESTONE AS NOTED IN ITEM #4 & #12 ABOVE.
21. CURVED ALUMINUM STOREFRONT WINDOW SYSTEM. HEAD HEIGHT 15'-0" A.F.F. BASIS OF DESIGN SIMILAR TO #9 ABOVE
22. TUBE COLUMN WITH ALUMINUM COVER - SEE ALSO STRUCTURAL DRAWINGS
23. ANGLED TUBE COLUMN WITH ALUMINUM COVER
24. REINFORCED CONCRETE PIER (48" HIGH) WITH CHAMFERED SIDES AND CAST STEEL CONNECTION FOR COLUMN
25. ALUMINUM STOREFRONT WINDOW TYPE "D" - 8'-8" (w) x 8'-8" (h) HEAD HEIGHT 12'-8" A.F.F. (1ST FLOOR) & 12'-8" A.F.F. @ SECOND FLOOR STAIR TOWER.
26. METAL GUTTER, ROOF LEADER AND OVERFLOW SCUPPER. WITH PAINTED CAST IRON BOOT BASE AND TIE IN TO UNDERGROUND STORMWATER SYSTEM. SEE ALSO CIVIL DRAWINGS
27. PORTE COCHERE -BASIS OF DESIGN AS FOLLOWS: 3' x 3' MASONRY PIERS (TOM 14'- 8") WITH TUBE STEEL COLUMNS/ALUM COVER HEIGHT OF HIGH BEAM BRG 21'-0", HEIGHT OF LOW BEAM BRG 20'-0", CLEARANCE TO UNDERSIDE OF BEAM (LOW) 19'-0". ALL FINISH MATERIALS SIMILAR TO REST OF BLDG.
28. NEW CANOPY WITH FOLLOWING DESIGN ASSUMPTIONS: CANOPY WIDTH 15'-8", BEARING HEIGHT AT TOP OF PIER 14'-8", 16" x 16" MASONRY PIERS (TOM 6'-8") WITH TUBE STEEL COLUMN/ALUM COVER SPACED AT +/-13'-4" O.C. ALL FINISH MATERIALS SIMILAR TO REST OF BLDG.
29. NEW POLE SIGN IN EXISTING SIGN LOCATION. SIGN 35'-0" TO HIGHEST POINT WITH DOUBLE SIDED ELECTRONIC MESSAGE BOARD (12'-0" high x 16'-0" wide ~ 192 SOFT) ON EACH SIDE.
30. ALUMINUM STOREFRONT WINDOW TYPE "E" - 15'-6" (w) x 8'-8" (h) HEAD HEIGHT +/- 13'-8" A.F.F. WINDOW INCLUDES TRANSLUCENT PANEL AT UPPER LEVEL FRAMES

KEY PLAN / ELEVATIONS LEGEND

