

**ANNE ARUNDEL COUNTY
ILLICIT DISCHARGE DETECTION
AND ELIMINATION PROGRAM REPORT:
July 2024 – June 2025 (Fiscal Year 2025)**



Prepared for

Anne Arundel County
Department of Public Works
Bureau of Watershed Protection and Restoration
2662 Riva Road
Annapolis, MD 21401

Prepared by

KCI Technologies, Inc.
936 Ridgebrook Road
Sparks, MD 21152

September 2025

TABLE OF CONTENTS

	Page
1.0 INTRODUCTION	5
2.0 IDDE SCREENING METHODS	7
2.1 Field Screening/Outfall Assessment	7
2.2 Dry Weather Discharge	7
2.3 Infrastructure Mainenance and Repair.....	8
2.4 Upland Pollution.....	8
3.0 RESULTS	10
3.1 Outfall Screening.....	10
3.2 Infrastructure Conditions.....	11
3.3 Commercial and Industrial Facility Inspections.....	12
3.4 County-Owned Properties	16
4.0 SUMMARY	16
5.0 ENFORCEMENT ACTIONS	18
6.0 REFERENCES	37
APPENDIX A Illicit Discharge Reports Submitted by KCI to Anne Arundel County ...	38
APPENDIX B Infrastructure Condition Reports Submitted by KCI to Anne Arundel County.....	51
APPENDIX C Upland Pollution Source Reports Submitted by KCI to Anne Arundel County.....	73
APPENDIX D Anne Arundel County Compliance Database Report	113
APPENDIX E IDDE Program Maps.....	114
APPENDIX F MDE Administrative Pentalties.....	120

LIST OF TABLES

Table No.	Page
Table 2.1 – Illicit Discharges Threshold Limits	7
Table 3.1 – Summary of Potential Illicit Discharges Identified During FY2025	10
Table 3.2 – Infrastructure Repair and Maintenance Report Summary for FY2025	11
Table 3.3 – Summary of Upland Pollutant Source Findings for FY2025	12
Table 3.4 – Summary Of County-Owned Property Inspection Findings for FY2025	16
Table 4.1 – Summary Of Outfall Conditions and Observations Made During the FY2025 Field Screening.....	17
Table 5.1 – FY2025 IDDE Program investigative activities and follow-up actions.	20
Table 5.2 – Ongoing investigative actions from previous reporting years	30

1.0 INTRODUCTION

As required in Anne Arundel County's National Pollutant Discharge Elimination System (NPDES) stormwater discharge permit (Permit No. 20-DP-3316, MD0068306), the County is required to investigate and eliminate pollutant sources contributing to the Municipal Separate Storm Sewer System (MS4) from within the County's permit administration area. The purpose of the County's Illicit Discharge Detection and Elimination (IDDE) Program is to identify and eliminate non-permitted, non-stormwater discharges, and potential pollutant sources to the MS4 and to surface water. These discharges can be hazardous to public health, harmful to aquatic life in receiving waters, and damaging to water quality. Dry weather screening is performed on County MS4 outfalls that are identified in a specific target area of the County each year. The field screening includes an outfall assessment, dry weather discharge assessment, infrastructure condition assessment, and an upland pollution assessment.

Anne Arundel County's Bureau of Watershed Protection and Restoration (BWPR) designated KCI Technologies, Inc. (KCI) as the consultant on contract to conduct IDDE outfall inspections for the County during the Fiscal Year (FY) 2025 reporting period (July 1, 2024 to June 30, 2025). As stipulated by permit conditions, KCI screened a minimum of 150 outfalls within the County's NPDES permit administration area within the County's target screening area for FY2025. KCI adhered to Anne Arundel County Bureau of Watershed Protection and Restoration's Illicit Discharge Detection and Elimination Standard Operating Procedures (SOP) for Consultants and BWPR Staff (KCI 2021) for the outfall field screenings. According to the established protocols, KCI inspectors noted outfall attributes, infrastructure conditions, and evidence of dry weather flows, if present, at all outfalls selected as target sites, as defined below. If dry weather discharge was present, inspectors documented conditions relevant to the discharge and prepared to collect and test the effluent for a defined set of chemical constituents. If test results or visual observations indicated potential illicit connections, the crew investigated the drainage network contributing to the outfall and the surrounding areas to identify any possible sources of pollution, including any upland pollution sources. The crew also committed to a return visit to the outfall within 4-24 hours to re-test for the parameters that had values exceeding criteria for the initial test. If the second inspection also indicated test results out of the acceptable ranges, KCI staff alerted County personnel via a written report of the findings and called the County's Environmental Hotline. After results are determined to be outside of acceptable ranges, the field crew followed the storm drain system upstream to attempt to identify the upland source of contaminant(s). County staff then continued the process with appropriate measures to abate violations.

For the 2025 reporting period, KCI targeted 163 outfalls for field screening following Anne Arundel County Bureau of Watershed Protection and Restoration's Illicit Discharge Detection and Elimination Standard Operating Procedures (SOP) for Consultants and BWPR Staff (KCI 2021). Priority outfalls for selection were those that were 12" or greater in pipe diameter and predominantly drain commercial and industrial areas located within a geographical target area boundary predetermined by the County and KCI. This ensured that the screened outfalls were located within the target areas of the County that have the highest potential for pollution. The County aims for approximately 75% of the total number of screened outfalls to drain commercial/industrial land uses. In addition to the criteria above, outfalls with suspected or

known violations from the last reporting year were prioritized for this year. The 163 targeted sites were located in southern Anne Arundel County, constrained to the north by MD Routes 50 and the South River, including areas such as Edgewater, Mayo, Davidsonville, and Deale.

2.0 IDDE SCREENING METHODS

2.1 FIELD SCREENING/OUTFALL ASSESSMENT

Per Anne Arundel County's protocols (KCI 2021), a two-person KCI field team performed outfall inspections after a minimum of 72 hours of dry weather (defined as periods with less than 0.1 inches of total rainfall). Each outfall was inspected for the following: signs of physical deterioration (cracking, separation, or disintegration of infrastructure); verification of outfall configuration, dimensions, and position; and any evidence of dry-weather discharge. A digital photograph was taken at every inspected outfall. Outfall dimensions and flow measurements were recorded in the field using a tape measure in inches.

In addition to the outfall's attributes and condition, the outfalls were also inspected for the following physical parameters: deposits and staining, algal growth, vegetative condition, odors present, erosion, floatables, color and clarity of discharge. Deposits and staining can indicate previous illicit discharges and may require further investigation. Algal growth may indicate the presence of nutrients or sewage in the discharge and may require further investigation. Vegetative growth could be indicative of excessive nutrients if there is excessive growth, or the presence of a chemical if growth is inhibited. Any odors that were detected out of ordinary required further investigation. In addition, erosion was assessed within 25 feet of the outfall.

2.2 DRY WEATHER DISCHARGE

If outfalls were found to be flowing during inspection, the discharge was tested using a Hach Storm Drain Test Kit for chlorine, detergents, copper, and phenols, a Hanna Medium Range Ammonia Colorimeter test kit was used to test for ammonia-nitrogen, and a Hanna Low Range Fluoride Colorimeter was used to test for fluorides. Temperature and pH were measured at the time of sample collection with a Hach Pocket Pro probe. Results of the inspections were recorded within ArcCollector and Survey123.

If the discharge had a concentration above the threshold limit for chlorine, phenols, copper, detergents, fluorides, or ammonia, inspectors revisited the site and retested after 4 hours, but within 24 hours, to verify the result. *Dry Weather Flow and Illicit Discharges in Maryland Storm Drain Systems* (MDE, 1997) provide threshold concentrations for these constituents. Measurements above the threshold (on both tests) are considered indicative of an illicit discharge. The thresholds that were followed are listed below:

Table 2.1 – Illicit Discharges Threshold Limits	
Constituents	Threshold Value (ppm)
Phenol	0.17
Chlorine	0.4
Copper	0.21
Detergents	0.5
Fluoride	0.75
Ammonia	1.0

An appropriate range for pH is 6.5 to 8.5. Since areas with coastal plain geography can have naturally acidic groundwater conditions, recordings of pH values between 5.0 and 6.5 were not considered illicit if all other parameters were within acceptable limits. Areas of coastal plain geography can also show characteristically high prevalence of iron flocculent bacteria that feed on the naturally occurring iron in groundwater. Iron flocculent can foul the water sample due to the suspended material and a bacterial sheen. Significant iron flocculent bacteria within a tested dry weather discharge can cause the ammonia results to be elevated and can be considered the source if all other parameters are within acceptable limits and no other sources are found in the upstream network.

If the discharge was determined to be illicit, the field team followed the storm drain system upstream to attempt to identify the source of the pollutant. In order to track illicit discharges in the storm drain system, staff followed the flow path through the network using storm drain mapping. If a discharge source was identified, or if the source could not be definitively determined but the illicit discharge was actively occurring, the field team immediately contacted the County's Environmental Hotline to report the violation and request appropriate action. If the discharge was determined not to be illicit, a source was still tracked with the findings recorded in ArcCollector and Survey123. For any outfalls containing a possible illicit connection, a concise, site-specific Illicit Discharge report was prepared and sent to the County Permit Coordinator and IDDE Project manager within 5 working days of the discovery.

2.3 INFRASTRUCTURE MAINTENANCE AND REPAIR

Inspections adhered to section 3 of Anne Arundel County Bureau of Watershed Protection and Restoration's Illicit Discharge Detection and Elimination Standard Operating Procedures (SOP) for Consultants and BWPR Staff (KCI 2021). Field crews assessed the structural condition at each outfall by inspecting the pipe and surrounding area at the outfall. Common issues identified included concrete spalling and cracking, metal corrosion, pipe and structure separations, excess debris, and/or sediment, scour holes, and erosion. All outfalls with structural issues were documented using Survey123.

For any outfalls with immediate physical maintenance needs, a concise, site-specific Infrastructure Condition report with photographs was prepared and sent to the County Permit Coordinator and IDDE Project Manager within 5 working days after the discovery. Each report contained the County Outfall number, location, a written description of the site and identified issues, location map with labeled streets and identifying features on an aerial photo, and site photographs documenting the conditions at the site.

2.4 UPLAND POLLUTION

For discharges that were either non-detectable at the outfall, do not drain to a closed storm drain system at any accessible commercial and industrial areas, or originate from properties owned by the County not subject to the Maryland General Permit for Stormwater Discharge from Industrial Facilities within the targeted area, upland pollutant sources were identified when possible. All documented industrial and commercial areas in the targeted area of the County were identified to be inspected. If an upland pollutant source was identified, then a

point feature was created in ArcCollector and a Survey123 form was filled out. In addition, when upland pollutant sources were identified, a site-specific Upland Pollutant Source Report with photographs and locational information was prepared and sent to the County Permit Coordinator and IDDE Project Manager within five (5) working days of the discovery.

3.0 RESULTS

3.1 OUTFALL SCREENING

KCI staff inspected a total of 163 outfalls during the reporting period of July 2024 to June 2025. The inspections were conducted in November 2024 through February 2025. A map of the 163 outfall inspections and Industrial/Commercial target areas can be found in Appendix E.

The results show that, of the 163 sites, Eight (8) sites had sufficient dry weather flow to collect a sample. No detectable concentrations of phenols or copper were recorded at the outfalls where flow was sampled. One (1) outfall contained detergents below the threshold, five (5) outfalls contained ammonia below the threshold concentration, and seven (7) outfalls contained fluoride below the threshold. Two (2) outfalls were found to contain illicit discharges during the reporting period. A chemical summary can be found in the Table below. Site-specific reports for the two (2) outfalls can be found in Appendix A.

Outfall	Date of Test	Chlorine (mg/L)	Copper (mg/L)	Phenols (mg/L)	Detergents (mg/L)	Ammonia (mg/L)	Fluoride (mg/L)	pH
O22E8O00001	1/3/2025	1.0	0	0	0	0.14	0.29	7.0
B11G7O00012	11/16/2023	0	0	0	0.1	1.41	0.37	7.7

Bold = exceeds action criteria threshold

O22E8O00001

While completing outfall inspections, the KCI field team discovered a potential illicit discharge to Outfall O22E8O00001. The outfall was inspected and tested from the first upstream structure due to the outfall location being in a locked BMP. A high chlorine reading was taken. A reinspection of this outfall was performed four hours later. The flow remained the same with no change in chlorine (1.0mg/L) and only minor fluctuations in ammonia (0.18mg/L) and fluoride (0.24mg/L). The discharge was traced upstream to a manhole along Westbury Drive. The inlet connected to the manhole was dry, but running water could be heard. It is believed that the water is discharging from a point in the pipe connection between the manhole and inlet. All the other upstream structures were dry.

B11G7O00012

While completing outfall inspections, the KCI field team discovered a potential illicit discharge to Outfall B11G7O00012. After testing the sample, KCI found ammonia to exceed the allowed limit at 1.41 mg/L. A small amount of detergent (0.1mg/L) and fluoride (0.27 mg/L) were also detected but were under the screening thresholds. No odor could be detected from the sample, but a grey sheen was seen on the surface of the pooling water around the outfall. A reinspection was performed later that day. The second test resulted in similar values to before, with ammonia at 1.08mg/L and a small amount of detergent at 0.1mg/L and fluoride at 0.37 mg/L. The grey sheen seen on the pooling water was less prevalent during the second test. Staff attempted to trace the flow upstream, but access to the upstream structures was limited due to fencing behind the Golden Eagle Coin business. The two accessible upstream inlets were both dry. The

source of illicit discharge was unable to be identified. Based on past findings at the outfall, it is possible there is an illicit connection in the storm drain system that may be tied to the Travelodge or Golden Eagle; however, the specific source is still inconclusive.

3.2 INFRASTRUCTURE CONDITIONS

Significant maintenance needs of stormwater infrastructure were noted at six (6) outfalls. Site-specific reports for the outfalls experiencing significant infrastructure issues are detailed below and can be found in Appendix B.

Table 3.2 – Infrastructure Repair and Maintenance Report Summary for FY2025				
Location	Town	Outfall ID	Inspection Date	Issue
1599-1575 Patuxent Manor Rd	Davidsonville	J25F4O00001	11/18/2024	Joint separation and erosion.
4400-4414 Sands Rd	Harwood	J29A1O00004	11/18/2024	Missing upstream manhole lid.
599-501 Shadowbrook Ct	Davidsonville	L26F4O00001	11/18/2024	Severe downstream and upstream erosion exposing pipe. Abandoned pipes upstream.
34 Mayo Rd	Edgewater	P23H4O00001	12/02/2024	Missing upstream manhole lid.
2222 Shore Dr	Edgewater	Q24B3O00001	12/02/2024	Trash and debris block downstream flow.
3451 Solomons Island Rd	Edgewater	P24D8O00001	12/05/2024	Erosion around the outfall and downstream embankments. Outfall pipe separating from hillside.

1599-1575 Patuxent Manor Road – Outfall J25F4O00001

KCI identified moderate downstream erosion and a hole forming above Outfall J25F4O00001 indicating a joint separation is occurring.

4400-4414 Sands Road – Outfall J29A1O00004

KCI identified a missing manhole lid at Outfall J29A1O00004. The missing manhole lid is posing a safety issue.

599-501 Shadowbrook Court – Outfall L26F4O00001

KCI identified moderate to severe upstream erosion exposing Outfall L26F4O00001. Moderate downstream erosion is also present. Two secondary corrugated metal pipes were found upstream and are in bad condition, but these are assumed to be abandoned.

34 Mayo Road – Outfall P23H4O00001

KCI identified a missing upstream manhole lid at Outfall P23H4O00001. The missing manhole lid is half covered with old wood planks and leaf debris posing a safety issue.

2222 Shore Drive – Outfall Q24B3O00001

KCI identified a significant amount of trash and debris at Outfall Q24B3O00001. Multiple downed trees and a basketball hoop stand, as well as other trash and debris, are blocking the outfall pipe. The outfall and downstream channel need to be cleared to allow discharge from the pipe to freely flow.

3451 Solomons Island Road – Outfall PP24D8O00001

KCI identified severe erosion around Outfall P24D8O00000. The embankment erosion occurring downstream of the outfall is causing trees to uproot and deep channels to form. The erosion upstream is causing severe undermining and separation of the outfall structure from the surrounding hillside.

3.3 COMMERCIAL AND INDUSTRIAL FACILITY INSPECTIONS

A total of 267 commercial and industrial property polygons were visually surveyed in the reporting year. Two hundred fifty (250) of the identified commercial/industrial polygons represented commercial land uses, and seventeen (17) represented industrial land uses. A map of the visually surveyed commercial and industrial target areas can be found in Appendix E. During July 2024 – June 2025, there were nineteen (19) cases of upland pollution related to water quality that were reported to BWPR. Each report was investigated and resolved using Anne Arundel County staff, MDE, and other state agencies. A summary of the findings is listed below with the site-specific reports found in Appendix C.

Table 3.3 – Summary of Upland Pollutant Source Findings for FY2025

Address	Town	Business Name	Inspection Date	Issue
173 Mitchell's Chance Rd	Edgewater	Coopers Tavern	10/16/2024	Grease bin and pavement staining
3115 Solomons Island Rd	Edgewater	Flagship Carwash	10/16/2024	Active vehicle washing runoff
832 Shore Dr	Edgewater	Londontowne Marine	10/16/2024	Improperly stored chemical materials
120 Mitchells Chance Rd	Edgewater	URBurger	10/16/2024	Grease bin and pavement staining

Table 3.3 – Summary of Upland Pollutant Source Findings for FY2025

Address	Town	Business Name	Inspection Date	Issue
1246 Mayo Rd	Edgewater	Bayside Inn	10/17/2024	Improperly stored chemical materials
4079 Cadle Creek Road	Edgewater	Casa Rio Marina	10/17/2024	Improperly stored chemicals and stockpiles
3365 Pocahontas Dr	Edgewater	Pocahontas Marina	10/17/2024	Improperly stored stockpiles
3553 Loch Haven Dr	Edgewater	South River Farm Park	10/17/2024	Improperly stored stockpiles
619 Central Avenue East	Edgewater	Sue's Deli	10/17/2024	Grease bin and pavement staining
3350 Patuxent River Rd	Davidsonville	Amazon Construction Inc.	10/18/2024	Improperly stored stockpiles
3200 Patuxent River Rd	Davidsonville	Contractors Precast Corporation	10/18/2024	Improperly stored stockpiles
1251 W Central Ave	Davidsonville	Harvest Thyme Tavern	10/18/2024	Grease bin and pavement staining
669 W Central Ave	Davidsonville	Miller's Auto Service	10/18/2024	Improperly stored stockpiles
436 W Central Ave	Davidsonville	Statewide Septic and Backhoe	10/18/2024	Improperly stored stockpiles
3259 Beards Point Rd	Davidsonville	Statewide Septic and Backhoe	10/22/2024	Improperly stored stockpiles

Table 3.3 – Summary of Upland Pollutant Source Findings for FY2025

Address	Town	Business Name	Inspection Date	Issue
5570 Shady Side Rd	Deale	Christopher's Fine Foods	10/30/2024	Grease bin and pavement staining
533 Deale Rd	Deale	Happy Harbor Restaurant	10/30/2024	Grease bin and pavement staining
389 Deale Rd	Tracys Landing	Herrington Harbour North.	10/30/2024	Improperly stored stockpiles
6158 Drum Point Rd	Deale	Skipper's Pier Restaurant & Dock Bar.	10/30/2024	Grease bin and pavement staining

Coopers Tavern

KCI inspectors discovered a grease bin with heavy staining on the pavement behind Coopers Tavern located at 173 Mitchell's Chance Rd.

Flagship Carwash

KCI inspectors discovered car wash fluid runoff going into the storm drain on the property of Flagship Carwash at 3115 Solomons Island Rd.

Londontowne Marina

The KCI inspectors discovered improperly stored chemical materials on the property of Londontowne Marina at 832 Shore Dr. Staff observed several 55-gallon drums left exposed and without secondary containment but it's unclear if they contain product.

URBurger

KCI discovered a grease bin with moderate staining on the pavement alongside URBurger located at 120 Mitchells Chance Road.

Bayside Inn

KCI discovered improperly stored chemical materials on the property of Bayside Inn located at 1246 Mayo Road. Frying oil was found to be improperly stored outside. Mop with bucket being improperly stored outside.

Casa Rio Marine

KCI discovered improperly stored chemical materials on the property of Casa Rio Marina. Barrels of antifreeze stored outside. A stone/gravel stockpile was also located on the Casa

Rio Marina property located at 4079 Cadel Creek Road.

Pocahontas Marina

KCI discovered a dirt/mulch stockpile being improperly stored on the property of Pocahontas Marina located at 3365 Pocahontas Drive.

South River Farm Park

The KCI inspectors discovered a salt and/or sand stockpile being improperly stored on the property of South River Farm Park located at 3553 Loch Haven Drive.

Sue's Deli

KCI discovered a grease bin with heavy staining on the pavement behind Sue's Deli located at 619 Central Avenue East. Staff observed an excessive amount of grease accumulating on the top of the bin.

Amazon Construction Inc.

The KCI field team discovered a Dirt/Sand/Stone stockpile being improperly stored on the property of Amazon Construction inc located at 3350 Patuxent River Road.

Contractors Precast Corporation

KCI discovered a sand/stone stockpile being properly stored on the property of Contractors Precast Corporation located at 3200 Patuxent River Road.

Harvest Thyme Tavern

KCI discovered a grease bin with moderate staining on the pavement behind Harvest Thyme Tavern located at 1251 W Central Avenue.

Miller's Auto Service

The KCI inspectors discovered a stone stockpile being improperly stored on the property of Miller's Auto Services located at 669 W Central Avenue.

Statewide Septic and Backhoe

KCI discovered a stockpile of varying materials including dirt, trash and gravel being improperly stored on the property of Statewide Septic and Backhoe located at 436 W Central Avenue.

Statewide Septic and Backhoe

KCI discovered a gravel stockpile and a debris stockpile being improperly stored on the property of Statewide Septic & Backhoe located at 3259 Beards Point Rd.

Christopher's Fine Foods

KCI discovered a grease bin with heavy staining on the pavement behind Christopher's Fine Foods located at 5570 Shady Side Road.

Happy Harbor Restaurant

KCI discovered a grease bin with staining on and around itself at Happy Harbor

Restaurant located at 533 Deale Road.

Herrington Harbour North

KCI discovered multiple dirt/sand/stone stockpiles on the property of Herrington Harbour North located at 389 Deale Road.

Skipper's Pier Restaurant & Dock Bar

KCI discovered a grease bin with heavy staining on the pavement and on itself behind Skipper's Pier Restaurant & Dock Bar located at 6158 Drum Point Road.

3.4 COUNTY-OWNED PROPERTIES

KCI inspectors additionally screened three (3) County-owned properties located within the target area for FY2025. County site managers as well as on-site staff accompanied KCI inspectors for each inspection; therefore, conditions were documented but no reports filed for any potential violations discovered.

Table 3.4 – Summary Of County-Owned Property Inspection Findings for FY2025				
Address	Town	Business Name	Inspection Date	Issue
35 Stepneys Lane	Edgewater	Southern District Police Station	12/02/2024	No violations observed
5165 Solomons Island Road	Lothian	Fire Company 9 - Harwood/Lothian Fire Station	02/04/2024	Structure of corrugated metal pipe starting to corrode
3737 Elmer F. Hagner Lane	Davidsonville	Charles B. Butch Troyer Police Training Center	02/04/2024	Sediment buildup in outfall

4.0 SUMMARY

To assist with Anne Arundel County's Illicit Discharge Detection and Elimination program and to fulfill the requirements of the County's NPDES permit requirements, KCI inspected 163 outfalls and visually assessed 267 commercial and industrial property polygons for the 2025 reporting year. The table below summarizes the findings of the 163 outfalls inspected based on the observations made. Fifty-one (51) outfalls were found to be totally or partially submerged or contained standing water with no flow. Algae were found at fourteen (14) outfalls. No outfalls had a color variation. Ninety-four (94) outfalls contained trash, leafy debris and/or sediment deposition. Moderate erosion was occurring at fourteen (14) outfalls and severe erosion was occurring at another four (4) outfalls. As mentioned above, there were two (2) potential illicit discharges detected, six (6) structural repair and maintenance reports submitted, and nineteen (19) upland pollutant reports submitted.

Table 4.1 – Summary Of Outfall Conditions and Observations Made During the FY2025 Field Screening.	
Condition	Number of Outfalls
Observable Flow	8
Phenol Present	0
Chlorine Present	1
Detergents Present	1
Copper Present	0
Ammonia Present	6
Fluoride Present	7
Excessive Vegetation	0
Algae Growth	14
Floatables Present	8
Sediment Deposits	78
Other Deposits	8
Moderate Erosion	14
Severe Erosion	4
Odor Present	2
Color Present	0
Cloudy Clarity	1

5.0 ENFORCEMENT ACTIONS

Table 5.1 details all illicit discharge, upland pollution, and infrastructure concerns arising from the permit-required dry-weather screening of outfalls and routine visual surveys of commercial and industrial drainage areas during the reporting year. As is presented in Table 5.1, significant findings from the FY2025 field investigations were sent to the responsible authorities for action. Site-specific reports of potential illicit connections and upland pollutant sources (e.g., leaking or overflowing dumpsters) identified during the investigations for the FY2025 reporting period were referred to either the County's Department of Inspections and Permits (I&P) or the Department of Health. Structural issues identified during the reporting period were forwarded to the County's Stormwater Infrastructure Program (SIP) to determine ownership of the infrastructure; then, SIP or I&P addressed the problems based on whether the infrastructure was publicly or privately owned, respectively.

Occasionally, complex cases from prior reporting periods were not resolved in time for a particular year's summary report; such cases are typically reported as unresolved. Table 5.2 contains details of FY2025 enforcement actions taken on previously unresolved IDDE program cases.

In FY2025 I&P responded to an additional 20 complaints related to potential illicit discharges. Details of these complaints and County staff actions are provided in Appendix D, which contains inspection compliance database reports from the I&P Case Manager Complaint Tracking System for illicit connections, upland pollutant sources, or environmental hotline complaints relevant to this report. These reports detail the County efforts taken to investigate and remediate the complaints.

I&P applies a progressive approach to enforcement regarding illicit discharges. In general, Phase I enforcement begins with coordination with MDE, as applicable, for joint investigation. If the violator has an active 12-SW permit, MDE takes over full enforcement authority. If no 12-SW permit is active, I&P will issue a Correction Notice to violator to address violation within timeframe specific to type of incident. If violation still exists upon follow-up inspection, I&P will issue a second Correction Notice. If the violation still exists after two Correction Notices, I&P may issue a third Correction Notice or proceed with Phase II enforcement, which entails issuing a Violation Letter and Non-Compliance Notice, sent to the violator via certified mail. If the violation has still not been addressed upon follow-up inspections, I&P will proceed with Phase III enforcement which includes filing a legal injunction through the County's Office of Law and may issue a civil citation with Class C fines based on the County's Civil Fines Schedule. No civil citations were issued by I&P in FY2025 for violations stemming from IDDE-related surveys.

The Anne Arundel County Department of Health may choose to issue civil citations for violations of the Anne Arundel County Property Maintenance Code regarding rubbish, garbage, or sanitation. Before the issuance of a citation, property owners are issued a written warning in the form of a Notice of Violation, giving the property owner 30 days to correct the violations

before legal action is taken. If violations are not corrected following the issuance of a Notice of Violations, a citation may be issued. After a citation is issued, it is attempted to be served by a third-party server. Upon service, the property owner has 20 days to pay the fine and correct the violation, or 15 days to elect - via written response - to stand trial. After 20 days have passed since the initial inspection, the property is re-inspected for compliance. If the citation was unable to be served, the property is re-inspected immediately after receiving notice it was unable to be served. If violations remain at that point, the Department of Health may file for injunction. Once a citation or injunction is referred to the Office of Law, the property is re-inspected every 30 days until the trial date or until the violation is corrected. No civil citations were issued by the Department of Health in FY2025 for violations stemming from IDDE-related surveys.

Table 5.1. FY2025 IDDE Program investigative activities and follow-up actions.

ILLICIT DISCHARGES					
Survey Date	I&P Compliance Database ID	Outfall/Site Address	Issue	Response	Status
1/3/2025	N/A	Outfall O22E8O00001 3205 Wordsworth Dr, Riva, MD 21140	<p>On January 3, 2025, while performing IDDE outfall inspections for Anne Arundel County, KCI Technologies, Inc. discovered a potential illicit discharge with high chlorine results discharging from Outfall O22E8O00001. The outfall was inspected and tested from the first upstream structure due to the outfall location being in a locked BMP. There was steady flow out of the upstream structures to the outfall. An IDDE test was conducted. Chlorine (1.0 mg/L) was found to be above the screening thresholds. A small amount of ammonia (0.14mg/L) and fluoride (0.29mg/L) were detected along with a strong chlorine odor. The discharge was traced upstream to a manhole along Westbury Drive. The inlet connected to the manhole was dry, but running water could be heard. It is believed that the water is discharging from a point in the pipe connection between the manhole and inlet. All other upstream structures were dry.</p> <p>A reinspection of this outfall was performed four hours later. The flow remained the same with no change in chlorine (1.0mg/L) and only minor fluctuations in ammonia (0.18mg/L) and fluoride (0.24mg/L). The source of the discharge is believed to be a water line break leaking into the stormdrain. Recent pavement work could be seen near the manhole and the inlet that may have contributed to the leak. The Utilities Emergency Line was called, notifying them of the discharge.</p> <p>OUTFALL LOCATION: Next to 3205 Wordsworth Dr, Riva, MD 21140. MANHOLE LOCATION: In front of 395 Westbury Dr, Riva, MD 21140.</p>	<p>1/6/2025: Report received by BWPR 1/21/2025: Followed up with Bureau of Utilities. Water main break was identified and has been repaired.</p> <p>CASE CLOSED</p>	RESOLVED

ILLCIT DISCHARGES					
Survey Date	I&P Compliance Database ID	Outfall/Site Address	Issue	Response	Status
2/4/2025		Outfall B11G7O00012 3386 Fort Meade Rd, Laurel, MD 20724	<p>On February 4, 2025, while performing a follow up inspection for previous years' potential illicit discharge areas, KCI Technologies, Inc. discovered flowing water from outfall B11G7O00012. After testing the sample, KCI found ammonia to exceed the allowed limit at 1.41 mg/L. A small amount of detergent (0.1mg/L) and fluoride (0.27 mg/L) were also detected but were under the screening thresholds. No odor could be detected from the sample, but a grey sheen was seen on the surface of the pooling water around the outfall.</p> <p>A reinspection was performed later that day. The second test resulted in similar values as before, with ammonia at 1.08mg/L and a small amount of detergent at 0.1mg/L and fluoride at 0.37 mg/L. The grey sheen seen on the pooling water was less prevalent during the second test.</p> <p>Staff attempted to trace the flow upstream, but access to the upstream structures were limited due to fencing behind the Golden Eagle Coin business. The two accessible upstream inlets were both dry. The source of illicit discharge was unable to be identified. Based on past findings at the outfall, it is possible there is an illicit connection in the stormdrain system that may be tied to the Travelodge or Golden Eagle, however the specific source is still inconclusive.</p>	<p>2/6/2025: Report received by BWPR</p> <p>2/6/2025: Report forwarded to I&P for investigation.</p> <p>4/7/2025: I&P coordinating with Utilities to video cam the nearby sewer and stormdrain lines in attempt to identify illicit cross-connections.</p> <p>CASE OPEN</p>	UNRESOLVED – Investigation Ongoing

EROSION AND STRUCTURAL ISSUES					
Survey Date	I&P Compliance Database ID	Outfall/Site Address	Issue	Response	Status
11/18/24	N/A	4400-4414 Sands Rd, Harwood, MD 20776	On November 18th, 2024, while performing illicit discharge inspections for Anne Arundel County, KCI Technologies, Inc. discovered a missing manhole lid at Outfall J29A1O00004. The missing manhole lid is posing a safety issue.	11/27/2024: Report received by BWPR 11/27/2024: Report forwarded to SIP and Road Ops. Service request created by Road Ops 1/30/2025: Manhole cover replaced, repair complete. CASE CLOSED	RESOLVED
11/18/24	N/A	599-501 Shadowbrook Ct, Davidsonville, MD 21035	On November 18th, 2024, while performing illicit discharge inspections for Anne Arundel County, KCI Technologies, Inc. discovered moderate to severe upstream erosion exposing Outfall L26F4O00001. Moderate downstream erosion is also present. Two secondary corrugated metal pipes were found upstream and are in bad condition, but these are assumed to be abandoned.	11/27/2024: Report received by BWPR 1/27/2025: Report forwarded to SIP. 1/27/2025: SIP met on-site with contractor. One section of pipe will be removed, along with the concrete endwall. Rip-rap will be added around the pipe. 7/2/2025: Work start date still pending. CASE OPEN	UNRESOLVED

EROSION AND STRUCTURAL ISSUES					
Survey Date	I&P Compliance Database ID	Outfall/Site Address	Issue	Response	Status
11/18/24	N/A	1599-1575 Patuxent Manor Rd Davidsonville, MD 21035	On November 18th, 2024, while performing illicit discharge inspections for Anne Arundel County, KCI Technologies, Inc. discovered moderate downstream erosion and a hole forming above Outfall J25F4O00001 indicating a joint separation is occurring.	11/27/2024: Report received by BWPR 1/27/2025: Report forwarded to SIP. 1/27/2025: SIP met on-site with contractor. Discovered the hillside was being scoured at the outfall due to the invert of the pipe. Will consider lowering the pipe with a drop structure in the future. Contractor will schedule a video inspection of the pipe within the coming month. 2/18/2025: Video revealed pipe in poor condition, a badly separated joint with a large void on the outside of the pipe. Pipe to be lined from the inlet to the outfall. 7/2/2025: Work start date pending. CASE OPEN	UNRESOLVED
12/2/24	N/A	34 Mayo Rd, Edgewater, MD 21037	On December 2, 2024, while performing illicit discharge inspections for Anne Arundel County, KCI Technologies, Inc. discovered a missing manhole lid at an upstream structure of Outfall P23H4O00001. The missing manhole lid is half covered with old wood planks and leaf debris posing a safety issue.	12/12/2024: Report received by BWPR 1/14/2025: Report forwarded to SIP and Road Ops. Service request created by Road Ops. 5/22/2025: Service request closed out. CASE CLOSED	RESOLVED

EROSION AND STRUCTURAL ISSUES					
Survey Date	I&P Compliance Database ID	Outfall/Site Address	Issue	Response	Status
12/5/24	N/A	3451 Solomons Island Rd, Edgewater, MD 21037	On December 5, 2024, while performing illicit discharge inspections for Anne Arundel County, KCI Technologies, Inc. discovered severe erosion around Outfall P24D8O00001. The embankment erosion occurring downstream of the outfall is causing trees to uproot and deep channels to form. The erosion upstream is causing severe undermining and separation of the outfall structure from the surrounding hillside.	<p>12/12/2024: Report received by BWPR</p> <p>1/14/2025: Report forwarded to SIP.</p> <p>7/25/2025: Investigated by SIP. Outfall is within planned stream restoration project boundary. SIP will confirm that erosion at outfall structure will be addressed during restoration project.</p> <p>CASE OPEN</p>	UNRESOLVED
12/2/24	N/A	2222 Shore Dr, Edgewater, MD 21037	On December 2, 2024, while performing illicit discharge inspections for Anne Arundel County, KCI Technologies, Inc. discovered a significant amount of trash and debris at Outfall Q24B3O00001. Multiple downed trees and a basketball hoop stand, as well as other trash and debris, are blocking the outfall pipe. The outfall and downstream channel need to be cleared to allow discharge from the pipe to freely flow.	<p>12/12/2024: Report received by BWPR</p> <p>1/14/2025: Report forwarded to SIP.</p> <p>8/7/2025: Investigated by SIP. Outfall obscured by excessive trash, debris, trees. Work order sent to Road Ops to clear outfall. SIP will reinspect once access is restored.</p> <p>CASE OPEN</p>	UNRESOLVED

UPLAND POLLUTION					
Survey Date	I&P Compliance Database ID	Outfall/Site Address	Issue	Response	Status
10/18/24	E-2024-459	3350 Patuxent River Road Davidsonville, MD 21035	On October 18th, 2024, while performing commercial and industrial inspections for Anne Arundel County, KCI Technologies, Inc. discovered a Dirt/Sand/Stone stockpile being improperly stored on the property of Amazon Construction inc.	<p>11/3/2024: Report received by BWPR 11/13/2024: Report forwarded to I&P. 11/21/2024: Investigated by I&P. No visible evidence of stockpiles observed.</p> <p>CASE CLOSED</p>	RESOLVED
10/17/24	E-2024-461	4079 Cadle Creek Road Edgewater MD 21037	On October 17, 2024, while performing commercial industrial inspections for Anne Arundel County, KCI Technologies, Inc. discovered improperly stored chemical materials on the property of Casa Rio Marina. Barrels of antifreeze stored outside. A stone/gravel stockpile was also located on the Casa Rio Marina property.	<p>11/3/2024: Report received by BWPR 11/3/2024: Report forwarded to I&P. 11/18/2024: Investigated by I&P. Arrived onsite and located the gravel stockpile spoke with a marina worker and was informed that gravel pile was for resurface gravel when holes are formed. Informed drums were for winterizing boats. Storage of 55 gallon drums are a MDE issue not a storm-water issue. None of the drums seem to be leaking fluid at present time.</p> <p>CASE CLOSED</p>	RESOLVED
10/18/24	E-2025-4	3200 Patuxent River Road Davidsonville MD 21035	On October 18 th , 2024 while performing commercial/industrial inspections for Anne Arundel County, KCI Technologies, Inc. discovered a sand/stone stockpile being properly stored on the property of Contractors Precast Corporation.	<p>11/3/2024: Report received by BWPR 11/3/2024: Report forwarded to I&P. 11/21/24: Investigated by I&P. No violations observed.</p> <p>CASE CLOSED</p>	RESOLVED
10/16/24	E-2025-3	3115 Solomons Island Rd Edgewater, MD 211037	On October 16, 2024, while performing commercial industrial inspections for Anne Arundel County, KCI Technologies, Inc. discovered car wash fluid runoff going into the storm drain on the property of Flagship Carwash.	<p>11/3/2024: Report received by BWPR 11/3/2024: Report forwarded to I&P. 11/21/2024: Investigated by I&P. No violations observed.</p> <p>CASE CLOSED</p>	RESOLVED

UPLAND POLLUTION					
Survey Date	I&P Compliance Database ID	Outfall/Site Address	Issue	Response	Status
10/30/24	E-2025-6	389 Deale Rd Tracys Landing, MD 20779	On October 30, 2024, while performing commercial industrial inspections for Anne Arundel County, KCI Technologies, Inc. discovered multiple dirt/sand/stone stockpiles on the property of Herrington Harbour North.	11/3/2024: Report received by BWPR 11/13/2024: Report forwarded to I&P. 1/9/2025: Investigated by I&P. No exposed stockpiles observed. CASE CLOSED	RESOLVED
10/16/24	E-2024-462	832 Shore Dr, Edgewater, MD 21037	On October 16, 2024, while performing commercial industrial inspections for Anne Arundel County, KCI Technologies, Inc. discovered improperly stored chemical materials on the property of Londontowne Marina. Staff observed several 55-gallon drums left exposed and without secondary containment but it is unclear if they contain product.	11/3/2024: Report received by BWPR 1/13/2024: Report forwarded to I&P. 11/18/2024: Investigated by I&P. Arrived onsite to no drums leaking any antifreeze. Spoke with marina worker and he explained the drums are out due to winterizing boats. Re-assigned to MDE. Storage of drums is not Storm-water responsibility. CASE CLOSED	RESOLVED
10/18/24	E-2025-5	669 W Central Ave, Davidsonville, MD 21035	On October 18th, 2024, while performing commercial industrial inspections for Anne Arundel County, KCI Technologies, Inc. discovered a stone stockpile being improperly stored on the property of Miller's Auto Services.	11/3/2024: Report received by BWPR 11/3/2024: Report forwarded to I&P. 11/18/2024: Investigated by I&P. No violations observed.	RESOLVED
10/17/24	E-2024-463	3365 Pocahontas Dr, Edgewater, MD 21037	On October 17th, 2024, while performing commercial industrial inspections for Anne Arundel County, KCI Technologies, Inc. discovered a dirt/mulch stockpile being improperly stored on the property of Pocahontas Marina.	11/3/2024: Report received by BWPR 11/3/2024: Report forwarded to I&P. 11/18/2024: Investigated by I&P. Inspector spoke w/ employee of the marina and he stated a small load of wood chips were delivered and dumped in the parking lot for immediate use to mulch around picnic table areas and for landscaping up keep. No violation. CASE CLOSED	RESOLVED

UPLAND POLLUTION					
Survey Date	I&P Compliance Database ID	Outfall/Site Address	Issue	Response	Status
10/22/24	E-2024-460	3259 Beards Point Rd, Davidsonville, MD 21035	On October 22nd, 2024, while performing commercial industrial inspections for Anne Arundel County, KCI Technologies, Inc. discovered a gravel stockpile and a debris stockpile being improperly stored on the property of Statewide Septic & Backhoe.	11/3/2024: Report received by BWPR 1/13/2024: Report forwarded to I&P. 11/21/24: Investigated by I&P. No visible evidence of stockpiles. CASE CLOSED	RESOLVED
10/18/24	E-2024-464	436 W Central Ave, Davidsonville, MD 21035	On October 18th, 2024, while performing commercial industrial inspections for Anne Arundel County, KCI Technologies, Inc. discovered a stockpile of varying materials including dirt, trash and gravel being improperly stored on the property of Statewide Septic and Backhoe.	11/3/2024: Report received by BWPR 1/13/2024: Report forwarded to I&P. 11/21/24: Investigated by I&P. No visible evidence of stockpiles. CASE CLOSED	RESOLVED
10/17/24	n/a	1246 Mayo Road Edgewater MD 21037	On October 17th, 2024, while performing commercial industrial inspections for Anne Arundel County, KCI Technologies, Inc. discovered improperly stored chemical materials on the property of Bayside Inn. Frying oil found being improperly stored outside. Mop with bucket being improperly stored outside.	11/3/2024: Report received by BWPR 11/3/2024: Report forwarded to HD. 12/6/2024: Investigation completed by HD. No violations observed. CASE CLOSED	RESOLVED
10/30/24	n/a	5570 Shady Side Road Deale MD 20733	On October 30, 2024, while performing commercial industrial inspections for Anne Arundel County, KCI Technologies, Inc. discovered a grease bin with heavy staining on the pavement behind Christopher's Fine Foods.	11/3/2024: Report received by BWPR 11/3/2024: Report forwarded to HD. 11/25/2024: Investigated by HD. Observed slight build-up of grease on and around grease bin. Facility has contacted and scheduled cleaning service. Reinspection scheduled on or before 12/30. 12/30/2024: Investigation completed by HD. Facility has replaced grease bin with new unit and cleaned area. CASE CLOSED	RESOLVED

UPLAND POLLUTION					
Survey Date	I&P Compliance Database ID	Outfall/Site Address	Issue	Response	Status
10/16/24	n/a	173 Mitchell's Chance Road Edgewater MD 21037	On October 16, 2024, while performing commercial industrial inspections for Anne Arundel County, KCI Technologies, Inc. discovered a grease bin with heavy staining on the pavement behind Coopers Tavern.	<p>11/3/2024: Report received by BWPR</p> <p>11/13/2024: Report forwarded to HD.</p> <p>11/25/2024: Investigated by HD. Observed slight build-up of grease on and around grease bin. Facility has contacted and scheduled cleaning service. Reinspection scheduled on or before 12/30.</p> <p>12/30/2024: Investigation completed by HD. Facility has cleaned grease bin and surrounding area.</p> <p>CASE CLOSED</p>	RESOLVED
10/30/24	n/a	533 Deale Rd Deale MD 20751	On October 30, 2024, while performing commercial industrial inspections for Anne Arundel County, KCI Technologies, Inc. discovered a grease bin with staining on and around itself at Happy Harbor Restaurant.	<p>11/3/2024: Report received by BWPR</p> <p>11/13/2024: Report forwarded to HD.</p> <p>1/9/2024: Complaint inspection completed by HD. Grease bin observed with slight accumulation of grease. Instructed facility to clean grease build-up and keep bin free of grease spills in the future.</p> <p>CASE CLOSED</p>	RESOLVED
10/18/24	n/a	1251 W Central Ave, Davidsonville, MD 21035	On October 18th, 2024, while performing commercial industrial inspections for Anne Arundel County, KCI Technologies, Inc. discovered a grease bin with moderate staining on the pavement behind Harvest Thyme Tavern.	<p>11/3/2024: Report received by BWPR</p> <p>11/3/2024: Report forwarded to HD.</p> <p>11/22/2024: Investigated by HD. Area appeared clean – no violations observed.</p> <p>CASE CLOSED</p>	RESOLVED

UPLAND POLLUTION					
Survey Date	I&P Compliance Database ID	Outfall/Site Address	Issue	Response	Status
10/30/24	n/a	6158 Drum Point Rd Deale MD 20751	On October 30, 2024, while performing commercial/industrial inspections for Anne Arundel County, KCI Technologies, Inc. discovered a grease bin with heavy staining on the pavement and on itself behind Skipper's Pier Restaurant & Dock Bar.	<p>11/3/2024: Report received by BWPR 11/3/2024: Report forwarded to HD. 12/6/2024: Investigated by HD. Observed grease build-up and heavy staining on and around grease bin. Facility will replace or clean bin. Re-inspection scheduled for 1/7. 1/9/2025: Reinspection conducted by HD. Grease bin and surrounding area observed to be clean.</p> <p>CASE CLOSED</p>	RESOLVED
10/17/24	n/a	619 Central Avenue East Edgewater MD 21037	On October 17th, 2024, while performing commercial/ industrial inspections for Anne Arundel County, KCI Technologies, Inc. discovered a grease bin with heavy staining on the pavement behind Sue's Deli. Staff observed an excessive amount of grease accumulating on the top of the bin.	<p>11/3/2024: Report received by BWPR 11/3/2024: Report forwarded to HD. 11/22/2024: Investigated by HD. No violations observed.</p> <p>CASE CLOSED</p>	RESOLVED
10/16/24	n/a	120 Mitchells Chance Road, Edgewater, MD 21037	On October 16, 2024, while performing Commercial/industrial inspections for Anne Arundel County, KCI Technologies, Inc. discovered a grease bin with moderate staining on the pavement alongside URBurger.	<p>11/3/2024: Report received by BWPR 11/3/2024: Report forwarded to HD. 11/6/2025: Investigated by HD. Slight build-up observed on top of grease bin. 11/25/2025: Facility cleaned bin, photos sent to HD.</p> <p>CASE CLOSED</p>	RESOLVED
10/17/24	n/a	3553 Loch Haven Dr, Edgewater, MD 21037	On October 17th, 2024, while performing Commercial/industrial inspections for Anne Arundel County, KCI Technologies, Inc. discovered a salt and/or sand stockpile being improperly stored on the property of South River Farm Park.	<p>11/3/2024: Report received by BWPR 1/13/2024: Report forwarded to I&P. 11/14/2025: Investigated by I&P. No violations found – sand pile used for greenhouse operations.</p> <p>CASE CLOSED</p>	RESOLVED

Table 5.2. Ongoing investigative actions from previous reporting years.

ILLICIT DISCHARGES					
Survey Date	I&P Compliance Database ID	Outfall/Site Address	Issue	Response	Status
12/15/2023		Outfall B11G7O00012 3380 Fort Meade Rd, Laurel, MD 2072	<p>On December 15th, 2023, while performing a follow up inspection for previous years' potential illicit discharge areas, KCI Technologies, Inc. discovered flowing water from outfall B11G7O00012. After testing the sample, KCI found ammonia to exceed the allowed limit at 3.6 mg/L. A small amount of detergent (0.1mg/L) was detected under the screening threshold. No odor could be detected from the sample, but a grey sheen was seen on the surface of the pooling water around the outfall.</p> <p>A reinspection was performed later that day. The second test resulted in the same values as before, with ammonia at 3.6mg/L and a small amount of detergent at 0.1mg/L. The grey sheen seen on the pooling water previously had moved further downstream and a musty odor could now be detected from the sample. A flow was traced to an upstream inlet where water pooled and slowly released the illicit discharge. Public dumping of appliances and unlabeled chemicals were found around the side of one building, but a specific source of a spill or water source was unable to be located. Based on past findings at the outfall by the County, it is possible there is an illicit connection in the stormdrain system that may be tied to the Travelodge laundry activities however the specific source is still inconclusive.</p>	<p>12/15/2023: KCI reported illicit discharge to environmental hotline. 12/15/2023: Report received from KCI 12/19/2023: Report forwarded to I&P 03/27/2024: Investigated by BWPR Staff. No flow observed at outfall. Potential good housekeeping issues observed on Travelodge property. Reported illicit discharges suspected to be intermittent emptying of wastewater into stormdrain by Travelodge, but cannot confirm. Will revisit outfall as part of FY25 IDDE screening. 2/6/2025: Outfall re-screened by KCI. Illicit discharge confirmed. See Table 5-1 of this report for details of current investigation.</p> <p>CASE CLOSED</p>	<p>UNRESOLVED – Investigation Ongoing</p>

EROSION AND STRUCTURAL ISSUES					
Survey Date	I&P Compliance Database ID	Outfall/Site Address	Issue	Response	Status
March 16, 2023		Outfall C11O029 3525 Sharonwood Rd, Laurel, MD 20724	On March 16th, 2023, while performing illicit discharge inspections for Anne Arundel County, KCI Technologies, Inc. discovered severe bank erosion and head cutting downstream of outfall C11O029. This erosion began at a head cut about 10 yards downstream of the outfall, and was about 5ft deep on average.	4/17/2023: Report received by BWPR 4/17/2023: Report forwarded to SIP. 7-19-2023: SIP to investigate in coming weeks to determine if outfall stabilization is necessary. 8-11-2023: Inspected by SIP. Outfall stabilization work required. 6-3-2025: Project remains in SIP's backlog as low priority. Work start date pending. CASE OPEN	UNRESOLVED
March 15, 2023		Outfall R20O005 11 Hudson St, Annapolis, MD 21401	On March 15th, 2023, while performing illicit discharge inspections for Anne Arundel County, KCI Technologies, Inc. discovered damage in the barrel and erosion at upstream structures of Outfall R20O005. There are several cracks in the high-density polyethylene pipe and the pipe has begun separating. In addition, the soil around the next upstream manhole is scouring.	4-17-2023: Report received by BWPR 4-17-2023: Report forwarded to SIP. 7-19-2023: SIP has scheduled this for video inspection. 4-9-2024: Manhole raised, video inspection completed. Pipe likely to require lining. Outfall requires stabilization. 9-13-2024: Cost estimate received for pipe lining. 1-27-2025: SIP coordinating with adjacent property owners for access permission. Work start date pending. CASE OPEN	UNRESOLVED

11/15/2023		<p>Outfall M11A3O00001</p> <p>8378 Veterans Hwy, Millersville, MD 21108</p>	<p>On November 15, 2023, while performing illicit discharge inspections for Anne Arundel County, KCI Technologies, Inc. discovered Outfall M11A3O00001 which is eroded, and several sections of the projecting pipe have collapsed. Two sections of pipe have fully detached from the outfall, and the adjacent culvert (M11A3O00011) appears unstable as well, as it is being held up by two wooden slats. The banks downstream of these outfalls are also eroding.</p>	<p>11/16/2023: Report received from KCI 11/16/2023: Report forwarded to SIP 11/16/2023: Inspected by SIP. On list for site visit with contractor to obtain cost estimate. 12/8/2023: Cost estimate received from contractor. Work pending available funds. 1/14/25: Work complete. Class 2 Rip-rap installed to stabilize channel and side slopes. Installed 36" PVC connected to 36" RCP to match length of 60" RCP. Installed riprap swale from parking area to outfall.</p> <p>CASE CLOSED</p>	RESOLVED
11/16/2023		<p>Outfall M08C8O00011</p> <p>305 Hospital Dr, Glen Burnie, MD 21061</p>	<p>On November 16, 2023, while performing illicit discharge inspections for Anne Arundel County, KCI Technologies, Inc. discovered Outfall M08C8O00011 had major erosion surrounding the outfall. The outfall pipe is fully exposed, and a concrete slab is laying against the top of the pipe. The pipe's bituminous coating is degrading, and the barrel is corroded at some parts. The banks downstream of the outfall are also eroding.</p>	<p>11/27/2023: Report received from KCI 11/29/2023: Report forwarded to SIP 4/25/2025: Repairs complete. Endwall replaced, 20 additional feet of CMP added, stone bowl constructed at outfall, slopes stabilized, rip-rap swale installed from parking lot to outfall.</p> <p>CASE CLOSED</p>	RESOLVED

12/1/2023		<p>Outfall N04E7O00008</p> <p>575 E Ordnance Rd, Glen Burnie, MD 21060</p>	<p>On December 1, 2023, while performing illicit discharge inspections for Anne Arundel County, KCI Technologies, Inc. discovered Outfall N04E7O00008 which is eroded at the first section of pipe. The first pipe joint is disconnected causing undermining and erosion to occur adjacent to the pipe.</p>	<p>12/15/2023: Report received from KCI 12/21/2023: Report forwarded to SIP 12/21/2023: Structure confirmed as privately owned. Issue referred to I&P. 6/9/2025: Investigated by I&P. No noticeable sinkholes forming above or around. No sediment appeared to be infiltrating into the pipe. It also appeared that the end-section/last stretch of pipe was stable in place. I&P will continue to monitor but will close case for now.</p> <p>CASE CLOSED</p>	RESOLVED
2/8/2024		<p>Outfall M05B5O00001</p> <p>1405 Rowe Drive, Glen Burnie, MD 21061</p>	<p>On February 8, 2024, while performing illicit discharge inspections for Anne Arundel County, KCI Technologies, Inc. discovered the end section is fully detached at Outfall M05B5O00001. The corrugated metal pipe is also corroded. The outfall had a steady, continuous flow, but no illicit discharge was detected.</p>	<p>2/16/2024: Report received from KCI 2/16/2024: Report forwarded to SIP 3/7/2024: Cost estimate received from contractor 8/6/2024: Project designated as low priority. SIP researching ROW/easement status. 8/9/2024: Performed CCTV inspection of some segments in both SD easement. Segments inspected overall in good condition. Last two segments u/s of current outfall yet to CCTV. 1/30/2025: SIP met with adjacent property owners regarding the structures and fences on the right-of-way (ROW) obstructing access to the site. 5/19/2025: Obstructions removed. Work start date pending.</p> <p>CASE OPEN</p>	UNRESOLVED

2/8/2024		<p>Outfall N07C7O00001</p> <p>116 N Jerome Pkwy Glen Burnie, MD 21060</p>	<p>On February 8, 2024, while performing illicit discharge inspections for Anne Arundel County, KCI Technologies, Inc. discovered concrete being undermined at Outfall N07C7O00001. The soil and rip rap underneath the first upstream structure was eroded away and undermining the concrete.</p>	<p>2/16/2024: Report received from KCI 2/16/2024: Report forwarded to SIP 2/23/2024: Investigated by SIP. Action pending. 4/4/2024: Repairs completed as part of extensive repairs to storm system in area.</p> <p>CASE CLOSED</p>	RESOLVED
2/8/2024		<p>Outfall N07G8O00030</p> <p>7726 Baltimore Annapolis Blvd, Glen Burnie, MD 21060</p>	<p>On February 8, 2024, while performing illicit discharge inspections for Anne Arundel County, KCI Technologies, Inc. discovered a structural issue with the first upstream structure to Outfall N07G8O00030. The metal casting for the manhole was unbolted and off-center, exposing the manhole opening.</p>	<p>2/16/2024: Report received from KCI 2/16/2024: Report forwarded to SIP. Action pending. 8/12/2025: Manhole on Board of Education (BOE) property. Referred to Utilities and I&P for repair. 8/15/2025: Issue resolved by BOE facilities maintenance.</p> <p>CASE CLOSED</p>	RESOLVED

UPLAND POLLUTION					
Survey Date	I&P Compliance Database ID	Outfall/Site Address	Issue	Response	Status
March 7, 2023	E-2023-103	8529 Brock Bridge Road, Laurel, MD 20724	On March 7, 2023, while performing commercial industrial inspections for Anne Arundel County, KCI Technologies, Inc. discovered an uncontained millings stockpile and pile of used oil filters on the side of the road outside 8529 Brock Bridge Road, Laurel.	3-8-2023: Report received by BWPR 3-13-2023: Report forwarded to I&P. 3-15-2023: Investigated by I&P. Millings and oil filters are on the side of the road in front of a business with the gate locked. Not sure which business is the actual source. 8-28-2023: I&P to continue monitoring. 1-30-2024: Investigation inconclusive. Will re-screen property in FY2025. 6/30/2025: Rescreened during FY2025 screenings. No violations observed. CASE CLOSED	RESOLVED
March 10, 2023		745 MD-3 N Gambrills, MD 21054	On March 10, 2023, while performing commercial industrial inspections for Anne Arundel County, KCI Technologies, Inc. observed chemical drums not properly stored under cover and staining on the pavement behind Honda PowerSports located at 745 MD-3 N, Gambrills.	3-14-2023: Report received by BWPR 9-11-2023: Referred to MDE Inspection and Compliance. Case #181492. 1-30-2024: Investigation inconclusive. Will re-screen property in FY2025. 7-17-2024: No 20-SW permit req'd per MDE. Investigation referred back to County I&P. 8-12-2025: County I&P re-opening investigation. CASE OPEN	UNRESOLVED

March 10, 2023		784 MD-3 N Gambrills, MD 21054	On March 10, 2023, while performing commercial industrial inspections for Anne Arundel County, KCI Technologies, Inc. observed chemical drums not properly stored under cover and staining on the pavement outside Edelen's Auto Repair located at 784 MD-3 N, Gambrills.	<p>3-14-2023: Report received by BWPR</p> <p>9-11-2023: Referred to MDE Inspection and Compliance. Case #181492.</p> <p>1-30-2024: Investigation inconclusive. Will re-screen property in FY2025.</p> <p>7-17-2024: No 20-SW permit req'd per MDE. Investigation referred back to County I&P.</p> <p>8-12-2025: County I&P re-opening investigation.</p> <p>CASE OPEN</p>	UNRESOLVED
2/8/2024		100 Holsum Way Glen Burnie, MD 21060	On February 8, 2023, while performing commercial industrial inspections for Anne Arundel County, KCI Technologies, Inc. discovered an employee actively pre-washing cars before entering a car wash. Buckets of pink liquid, possibly soap, and hoses were lined up outside of the washing bays. The perimeter of the facility was inspected, and all surrounding inlets appeared to be dry. There were structures on the side of the grass that could possibly be a sewer/water system. It is believed that the soapy water from the car washes could possibly be draining into a water treatment system and not storm drains.	<p>2/16/2024: Report received from KCI</p> <p>2/20/2024: Report forwarded to I&P.</p> <p>2/22/2024: Investigated by I&P. No violations were observed</p> <p>6/30/2025: Rescreened during FY2025 screenings. No violations observed.</p> <p>CASE CLOSED</p>	RESOLVED

6.0 REFERENCES

Maryland Department of the Environment. 1997. Dry Weather Flow and Illicit Discharges in Maryland Storm Drain Systems.

KCI, Inc. 2021. Anne Arundel County Bureau of Watershed Protection and Restoration's Illicit Discharge Detection and Elimination Standard Operating Procedures (SOP) for Consultants and BWPR Staff. Prepared by KCI Technologies, Inc., Sparks, MD, for Anne Arundel County, MD, BWPR.

**APPENDIX A | ILLICIT DISCHARGE REPORTS SUBMITTED BY KCI TO ANNE
ARUNDEL COUNTY**

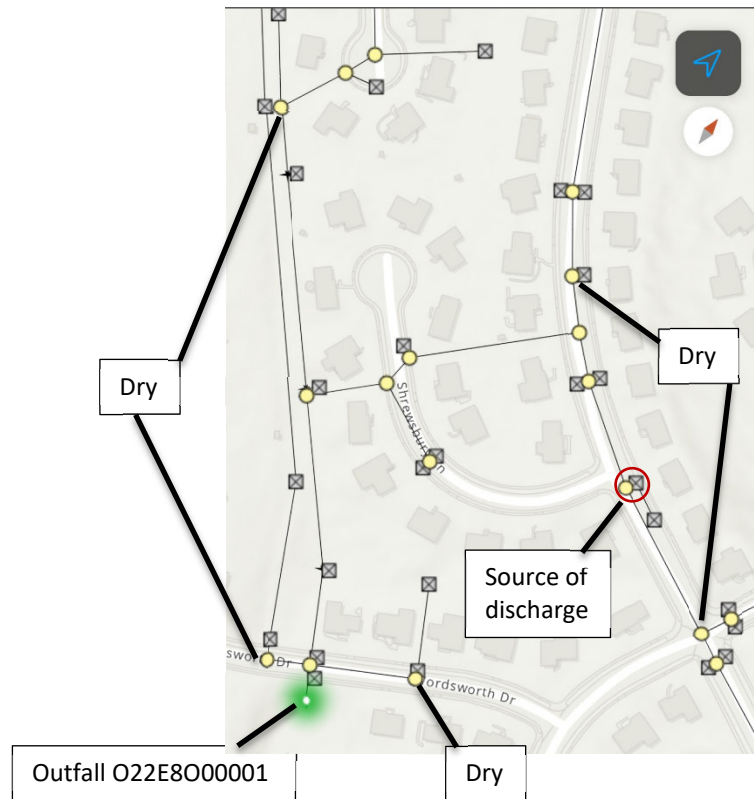
**Anne Arundel County IDDE Outfall Screening
Potential Illicit Discharge Report
Outfall O22E8O00001**

On January 3, 2025, while performing IDDE outfall inspections for Anne Arundel County, KCI Technologies, Inc. discovered a potential illicit discharge with high chlorine results discharging from Outfall O22E8O00001. The outfall was inspected and tested from the first upstream structure due to the outfall location being in a locked BMP. There was steady flow out of the upstream structures to the outfall. An IDDE test was conducted. Chlorine (1.0 mg/L) was found to be above the screening thresholds. A small amount of ammonia (0.14mg/L) and fluoride (0.29mg/L) were detected along with a strong chlorine odor. The discharge was traced upstream to a manhole along Westbury Drive. The inlet connected to the manhole was dry, but running water could be heard. It is believed that the water is discharging from a point in the pipe connection between the manhole and inlet. All the other upstream structures were dry.

A reinspection of this outfall was performed four hours later. The flow remained the same with no change in chlorine (1.0mg/L) and only minor fluctuations in ammonia (0.18mg/L) and fluoride (0.24mg/L). The source of the discharge is believed to be a water line break leaking into the storm drain. Recent pavement work could be seen near the manhole and the inlet that may have contributed to the leak. The Utilities Emergency Line was called, notifying them of the discharge.

OUTFALL LOCATION: Next to 3205 Wordsworth Dr, Riva, MD 21140.

MANHOLE LOCATION: In front of 395 Westbury Dr, Riva, MD 21140.



GIS DATA MAP



Aerial Map



Overview of Outfall O22E8O00001



Interior of first upstream structure



Interior of sixth upstream structure



Interior of eighth upstream structure, source of discharge



Interior of inlet connected to manhole with discharge source



Recent pavement near discharge source



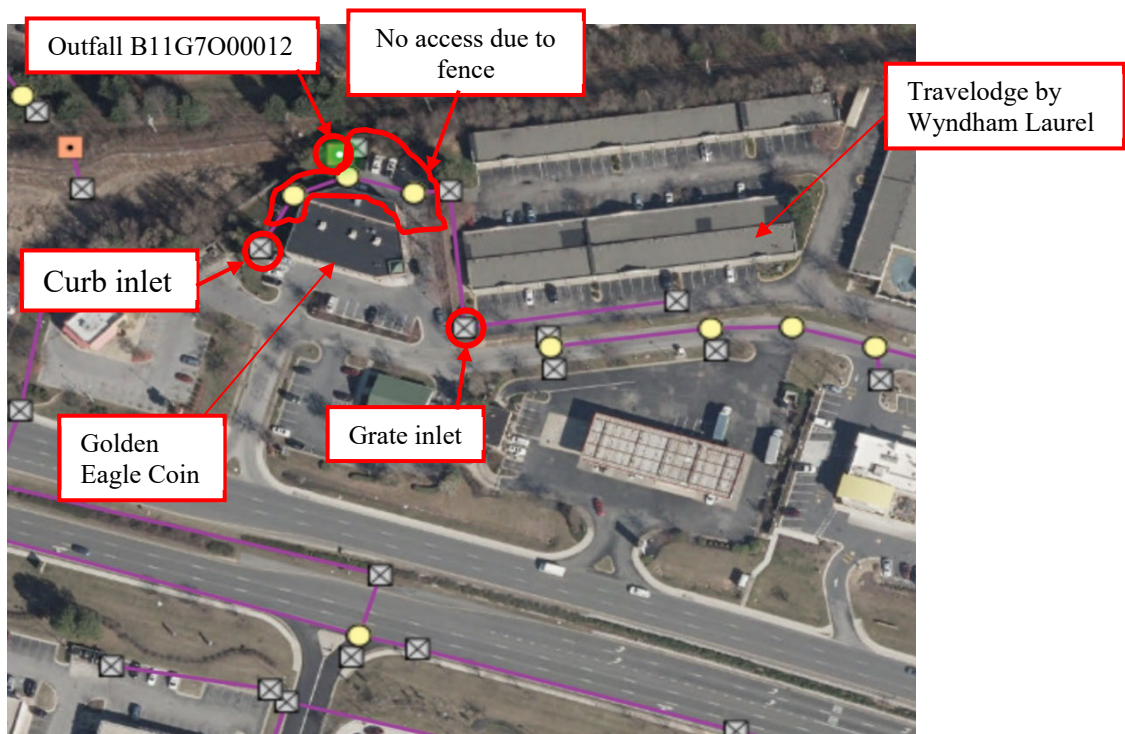
Waterline access

**Anne Arundel County Systematic IDDE Outfall Screening
Potential Illicit Discharge Report
Outfall B11G7O00012**

On February 4th, 2025, while performing a follow up inspection for previous years' potential illicit discharge areas, KCI Technologies, Inc. discovered flowing water from outfall B11G7O00012. After testing the sample, KCI found ammonia to exceed the allowed limit at 1.41 mg/L. A small amount of detergent (0.1mg/L) and fluoride (0.27 mg/L) were also detected but were under the screening thresholds. No odor could be detected from the sample, but a grey sheen was seen on the surface of the pooling water around the outfall.

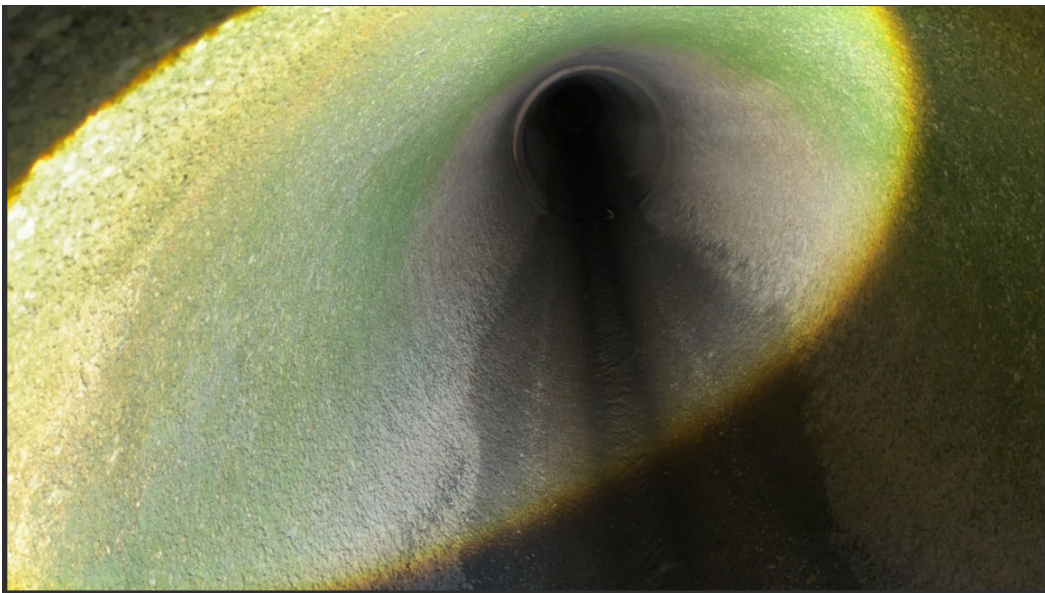
A reinspection was performed later that day. The second test resulted in similar values to before, with ammonia at 1.08mg/L and a small amount of detergent at 0.1mg/L and fluoride at 0.37 mg/L. The grey sheen seen on the pooling water was less prevalent during the second test. Staff attempted to trace the flow upstream, but access to the upstream structures was limited due to fencing behind the Golden Eagle Coin business. The two accessible upstream inlets were both dry. The source of illicit discharge was unable to be identified. Based on past findings at the outfall, it is possible there is an illicit connection in the storm drain system that may be tied to the Travelodge or Golden Eagle; however, the specific source is still inconclusive.

LOCATION: 3386 Fort Meade Rd, Laurel, MD 20724





Outfall B11G7O00012 overview.



Outfall B11G7O00012 barrel.



Outfall B11G7O00012 downstream.



Outfall B11G7O00012 pooling water with sheen during 1st Test.



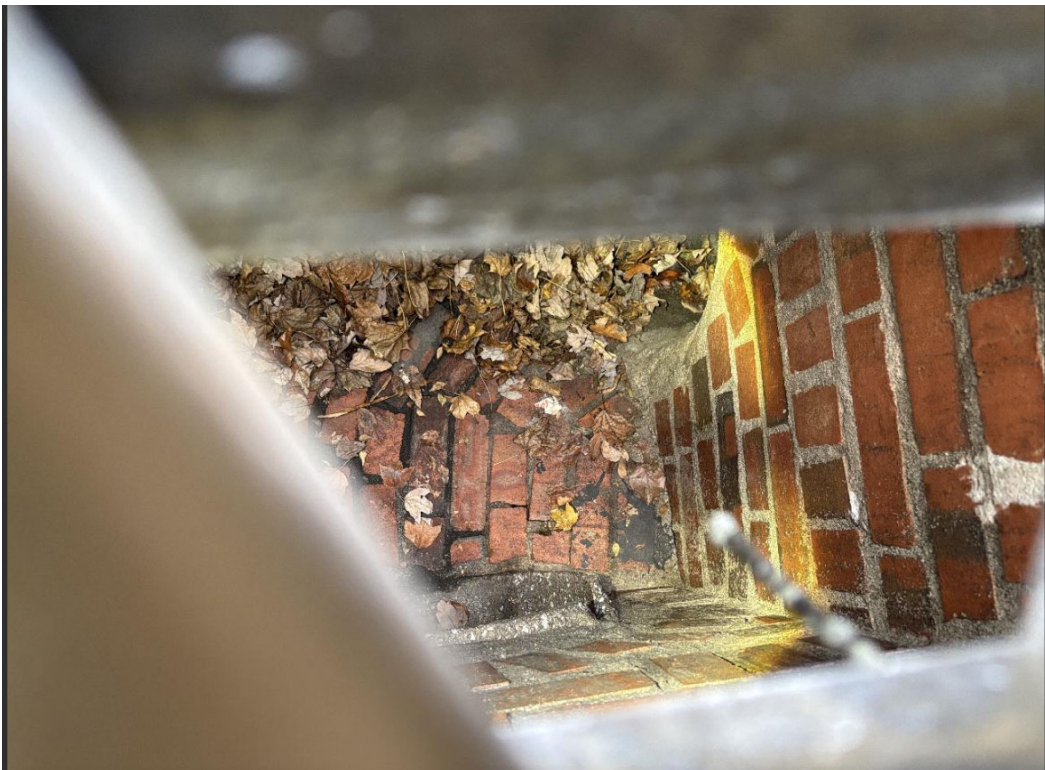
Upstream curb Inlet.



Upstream curb inlet interior.



Upstream grate inlet.



Upstream grate inlet interior.



Fencing around upstream structures.



Fencing around upstream structures.



Outfall B11G7O00012 pooling water during 2nd Test

**APPENDIX B | INFRASTRUCTURE CONDITION REPORTS SUBMITTED BY
KCI TO ANNE ARUNDEL COUNTY**

**Anne Arundel County IDDE Outfall Screening
Structural Issue Report
Outfall P23H4O00001**

On December 2nd, 2024, while performing illicit discharge inspections for Anne Arundel County, KCI Technologies, Inc. discovered a missing manhole lid at an upstream structure of Outfall P23H4O00001. The missing manhole lid is half covered with old wood planks and leaf debris posing a safety issue.

LOCATION: 34 Mayo Rd, Edgewater, MD 21037.





12/2/2024 Inspection- Overview of P23H4O00001.



12/2/2024 Inspection- Upstream manhole, missing lid.

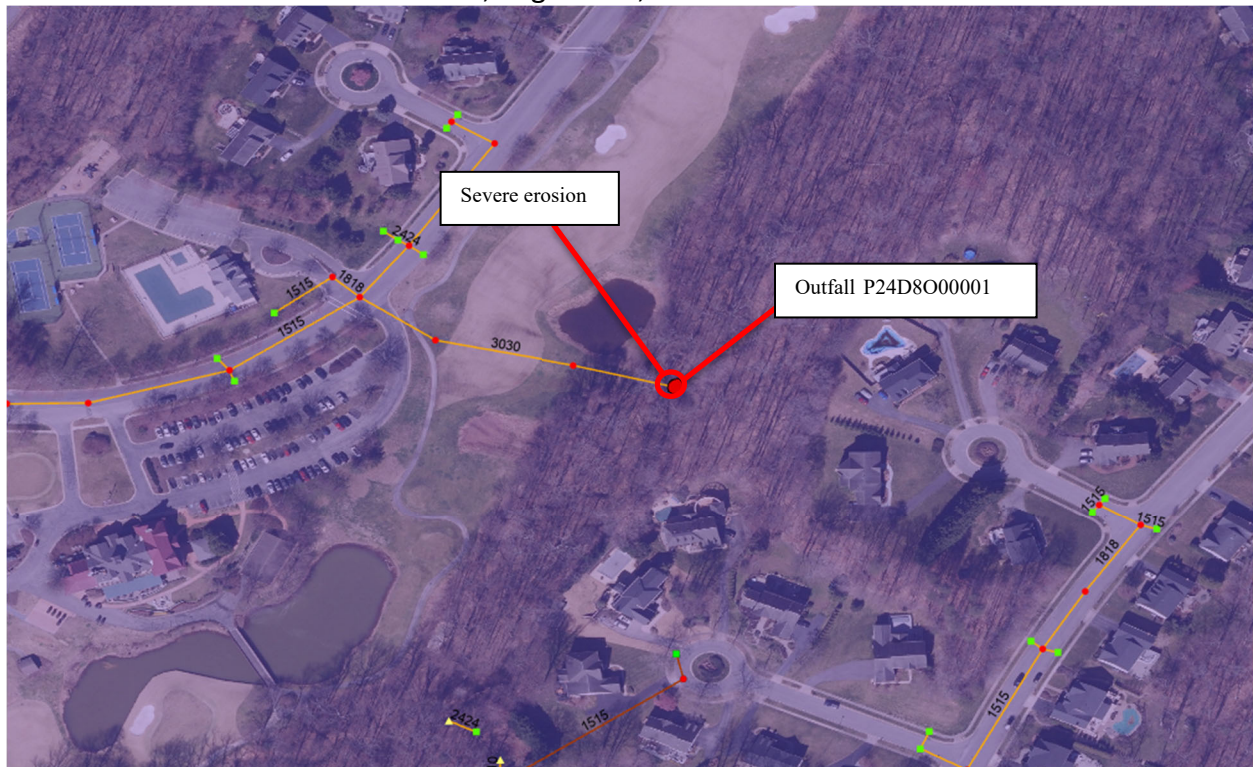


12/2/2024 Inspection- Upstream manhole, interior.

**Anne Arundel County IDDE Outfall Screening
Structural Issue Report
Outfall P24D8O00001**

On December 5th, 2024, while performing illicit discharge inspections for Anne Arundel County, KCI Technologies, Inc. discovered severe erosion around Outfall P24D8O00001. The embankment erosion occurring downstream of the outfall is causing trees to uproot and deep channels to form. The erosion upstream is causing severe undermining and separation of the outfall structure from the surrounding hillside.

LOCATION: 3451 Solomons Island Rd, Edgewater, MD 21037.





12/5/2024 Inspection- Overview of P24D8O00001.



12/5/2024 Inspection- Downstream side slope erosion.



12/5/2024 Inspection- Severe downstream embankment erosion.



12/5/2024 Inspection- Severe downstream embankment erosion causing uprooting of trees.



12/5/2024 Inspection- Upstream erosion is causing severe undermining and separation of the outfall structure from the surrounding hillside.

**Anne Arundel County IDDE Outfall Screening
Structural Issue Report
Outfall Q24B3O00001**

On December 2nd, 2024, while performing illicit discharge inspections for Anne Arundel County, KCI Technologies, Inc. discovered a significant amount of trash and debris at Outfall Q24B3O00001. Multiple downed trees and a basketball hoop stand, as well as other trash and debris, are blocking the outfall pipe. The outfall and downstream channel need to be cleared to allow discharge from the pipe to freely flow.

LOCATION: 2222 Shore Dr, Edgewater, MD 21037.





12/2/2024 Inspection- Overview of Q24B3O00001.



12/2/2024 Inspection- Downstream overview. Basketball hoop and debris blocking outfall channel.



12/2/2024 Inspection- Trash blocking downstream channel.

**Anne Arundel County IDDE Outfall Screening
Structural Issue Report
Outfall J25F4O00001**

On November 18th, 2024, while performing illicit discharge inspections for Anne Arundel County, KCI Technologies, Inc. discovered moderate downstream erosion and a hole forming above Outfall J25F4O00001 indicating a joint separation is occurring.

LOCATION: 1599-1575 Patuxent Manor Rd, Davidsonville, MD 21035.





11/18/2024 Inspection- Overview of J25F4O00001.



11/18/2024 Inspection- Hole forming on top of pipe.



11/18/2024 Inspection- Severe erosion downstream of Outfall J25F4O0000.

**Anne Arundel County IDDE Outfall Screening
Structural Issue Report
Outfall J29A1O00004**

On November 18th, 2024, while performing illicit discharge inspections for Anne Arundel County, KCI Technologies, Inc. discovered a missing manhole lid at Outfall J29A1O00004. The missing manhole lid is posing a safety issue.

LOCATION: 4400-4414 Sands Rd, Harwood, MD 20776.





11/18/2024 Inspection- Overview of J29A1O00004.

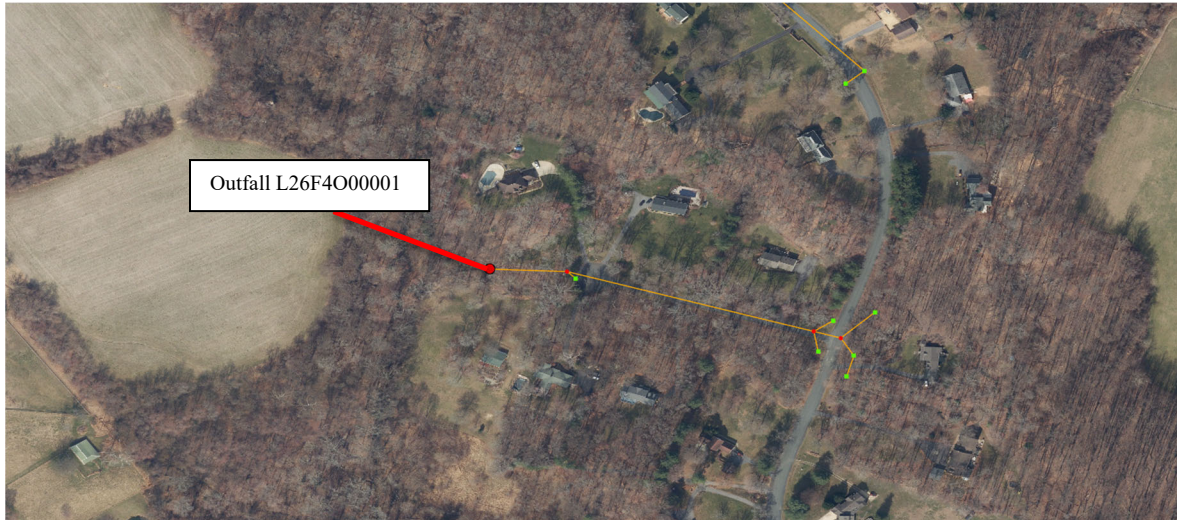


11/18/2024 Inspection- Upstream manhole, missing lid.

**Anne Arundel County IDDE Outfall Screening
Structural Issue Report
Outfall L26F4O00001**

On November 18th, 2024, while performing illicit discharge inspections for Anne Arundel County, KCI Technologies, Inc. discovered moderate to severe upstream erosion exposing Outfall L26F4O00001. Moderate downstream erosion is also present. Two secondary corrugated metal pipes were found upstream and are in bad condition, but these are assumed to be abandoned.

LOCATION: 599-501 Shadowbrook Ct, Davidsonville, MD 21035.





11/18/2024 Inspection- Overview of L26F4O00001.



11/18/2024 Inspection - Erosion upstream of pipe causing pipe exposure.



11/18/2024 Inspection - Erosion upstream of pipe causing pipe exposure. Secondary pipe is exposed and severely corroded but may be abandoned.



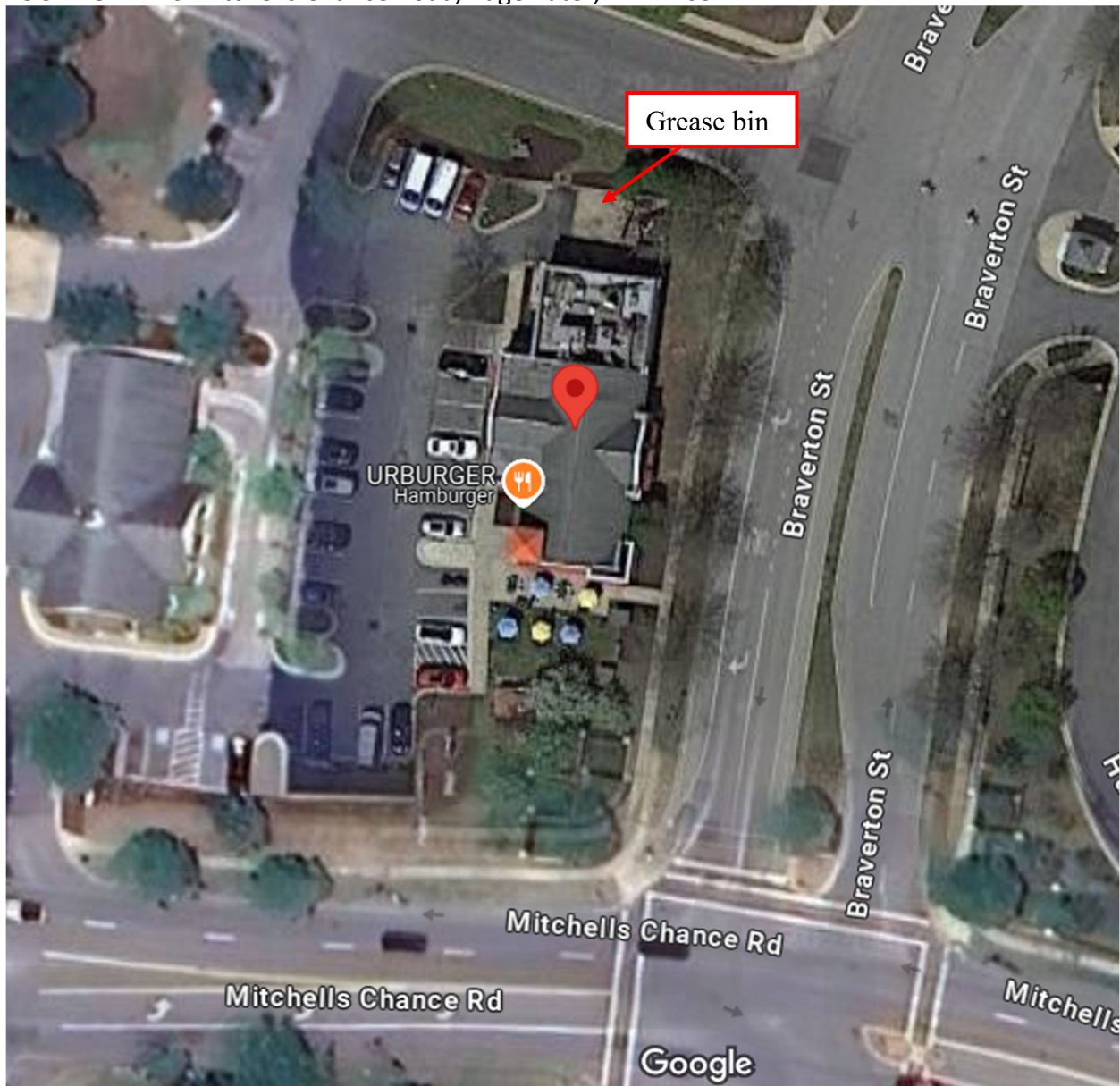
11/18/2024 Inspection - Secondary pipe is 25% filled with sediment and debris. Pipe is corroded and folding in on itself but may be abandoned.

**APPENDIX C | UPLAND POLLUTION SOURCE REPORTS SUBMITTED BY KCI TO
ANNE ARUNDEL COUNTY**

**Anne Arundel County Systematic IDDE Outfall Screening
Upland Pollution Report
URBurger**

On October 16, 2024, while performing commercial industrial inspections for Anne Arundel County, KCI Technologies, Inc. discovered a grease bin with moderate staining on the pavement alongside URBurger.

LOCATION: 120 Mitchells Chance Road, Edgewater, MD 21037



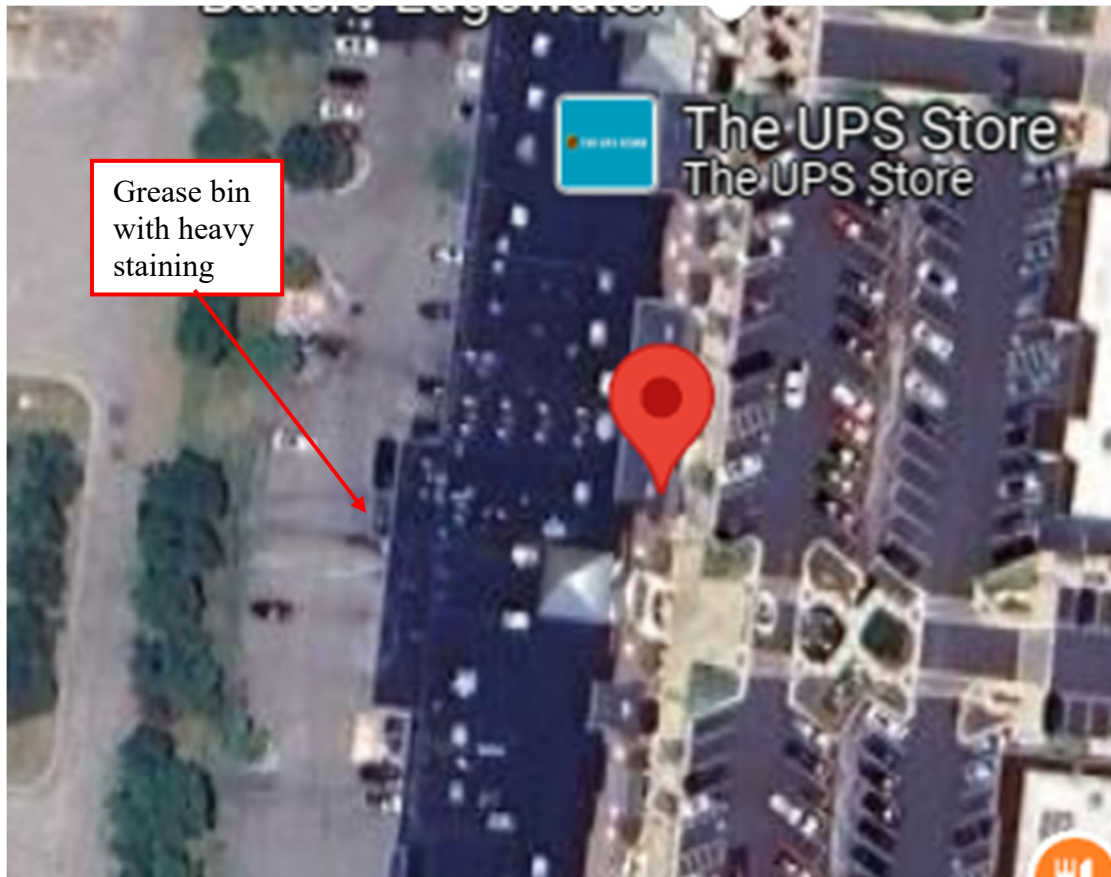


10/16/2024 Inspection – stained oil bin

**Anne Arundel County Systematic IDDE Outfall Screening
Upland Pollution Report
Coopers Tavern**

On October 16, 2024, while performing commercial industrial inspections for Anne Arundel County, KCI Technologies, Inc. discovered a grease bin with heavy staining on the pavement behind Coopers Tavern.

LOCATION: 173 Mitchell's Chance Road Edgewater MD 21037





10/16/2024 Inspection – Grease Trap with staining surrounding it.

**Anne Arundel County Systematic IDDE Outfall Screening
Upland Pollution Report
Flagship Carwash**

On October 16, 2024, while performing commercial industrial inspections for Anne Arundel County, KCI Technologies, Inc. discovered car wash fluid runoff going into the storm drain on the property of Flagship Carwash.

LOCATION: 3115 Solomons Island Rd, Edgewater, MD 21037





10/16/2024 Inspection – Runoff coming from car wash.

**Anne Arundel County Systematic IDDE Outfall Screening
Upland Pollution Report
Londontowne Marina**

On October 16, 2024, while performing commercial industrial inspections for Anne Arundel County, KCI Technologies, Inc. discovered improperly stored chemical materials on the property of Londontowne Marina. Staff observed several 55-gallon drums left exposed and without secondary containment but it's unclear if they contain product.

LOCATION: 832 Shore Dr, Edgewater, MD 21037





10/16/2024 Inspection – Exposed 55-gallon drums.

**Anne Arundel County Systematic IDDE Outfall Screening
Upland Pollution Report
Bayside Inn**

On October 17th, 2024, while performing commercial industrial inspections for Anne Arundel County, KCI Technologies, Inc. discovered improperly stored chemical materials on the property of Bayside Inn. Frying oil was found to be improperly stored outside. Mop with bucket being improperly stored outside.

LOCATION: 1246 Mayo Road Edgewater MD 21037



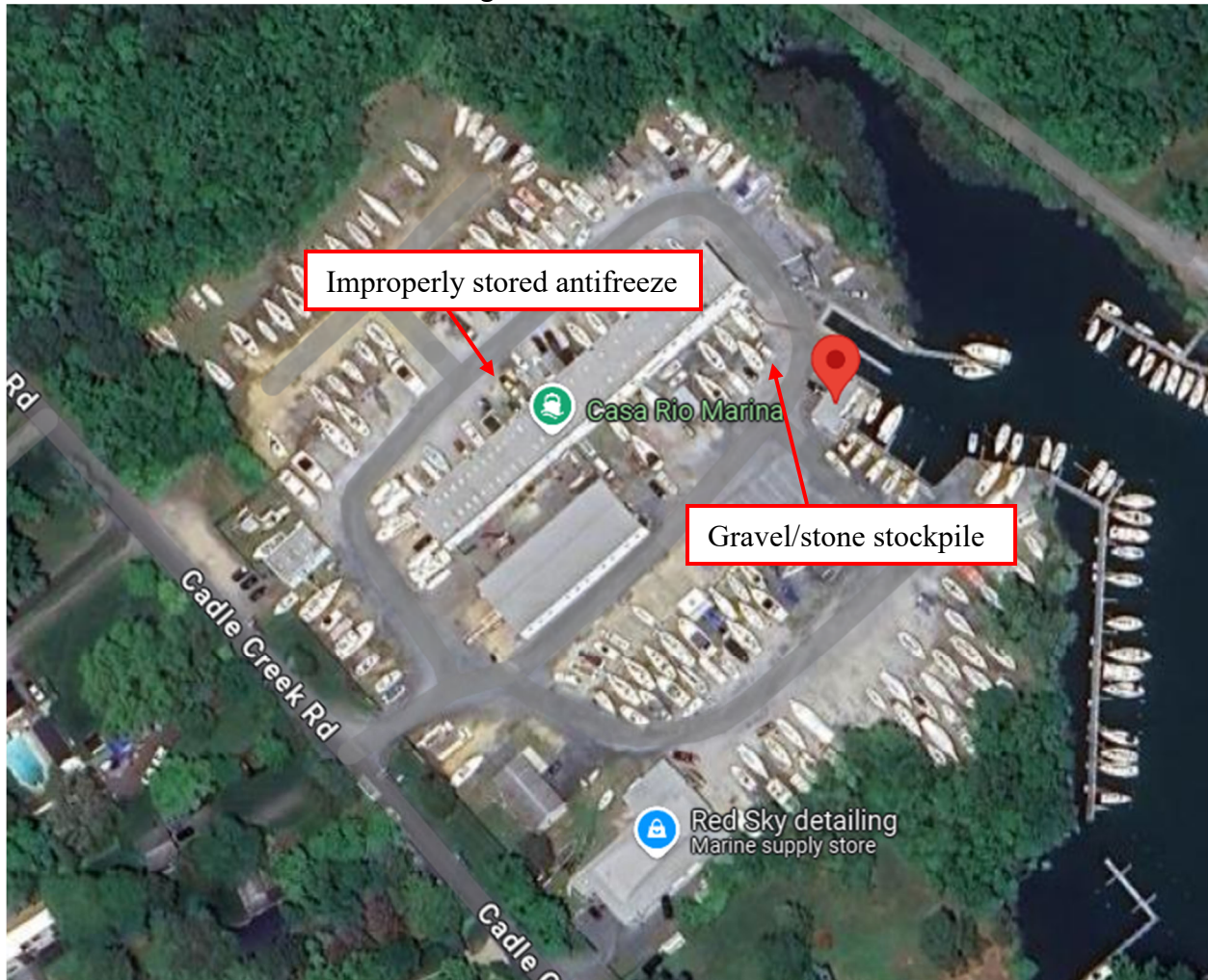


10/17/2024 Inspection – Cleaning supplies improperly stored outside.

**Anne Arundel County Systematic IDDE Outfall Screening
Upland Pollution Report
Casa Rio Marina**

On October 17th, 2024, while performing commercial industrial inspections for Anne Arundel County, KCI Technologies, Inc. discovered improperly stored chemical materials on the property of Casa Rio Marina. Barrels of antifreeze stored outside. A stone/gravel stockpile was also located on the Casa Rio Marina property.

LOCATION: 4079 Cadle Creek Road Edgewater MD 21037





10/17/2024 Inspection – Antifreeze improperly stored outside.



10/17/2024 Inspection – Stone/gravel stockpile.

**Anne Arundel County Systematic IDDE Outfall Screening
Upland Pollution Report
Pocahontas Marina**

On October 17th, 2024, while performing commercial industrial inspections for Anne Arundel County, KCI Technologies, Inc. discovered a dirt/mulch stockpile being improperly stored on the property of Pocahontas Marina.

LOCATION: 3365 Pocahontas Dr, Edgewater, MD 21037





10/17/2024 Inspection – Dirt/Mulch stockpile.

**Anne Arundel County Systematic IDDE Outfall Screening
Upland Pollution Report
South River Farm Park**

On October 17th, 2024, while performing commercial industrial inspections for Anne Arundel County, KCI Technologies, Inc. discovered a salt and/or sand stockpile being improperly stored on the property of South River Farm Park.

LOCATION: 3553 Loch Haven Dr, Edgewater, MD 21037





10/17/2024 Inspection – Salt and/or sand stockpile

**Anne Arundel County Systematic IDDE Outfall Screening
Upland Pollution Report
Sue's Deli**

On October 17th, 2024, while performing commercial industrial inspections for Anne Arundel County, KCI Technologies, Inc. discovered a grease bin with heavy staining on the pavement behind Sue's Deli. Staff observed an excessive amount of grease accumulating on the top of the bin.

LOCATION: 619 Central Avenue East Edgewater MD 21037





10/17/2024 Inspection – Oil container with heavy staining and residue.

**Anne Arundel County Systematic IDDE Outfall Screening
Upland Pollution Report
Amazon Construction Inc.**

On October 18th, 2024, while performing commercial industrial inspections for Anne Arundel County, KCI Technologies, Inc. discovered a Dirt/Sand/Stone stockpile being improperly stored on the property of Amazon Construction inc.

LOCATION: 3350 Patuxent River Road Davidsonville, MD 21035





10/18/2024 Inspection – Stockpile of Gravel/Dirt on site.

**Anne Arundel County Systematic IDDE Outfall Screening
Upland Pollution Report
Contractors Precast Corporation**

On October 18th, 2024, while performing commercial industrial inspections for Anne Arundel County, KCI Technologies, Inc. discovered a sand/stone stockpile being properly stored on the property of Contractors Precast Corporation.

LOCATION: 3200 Patuxent River Road Davidsonville MD 21035



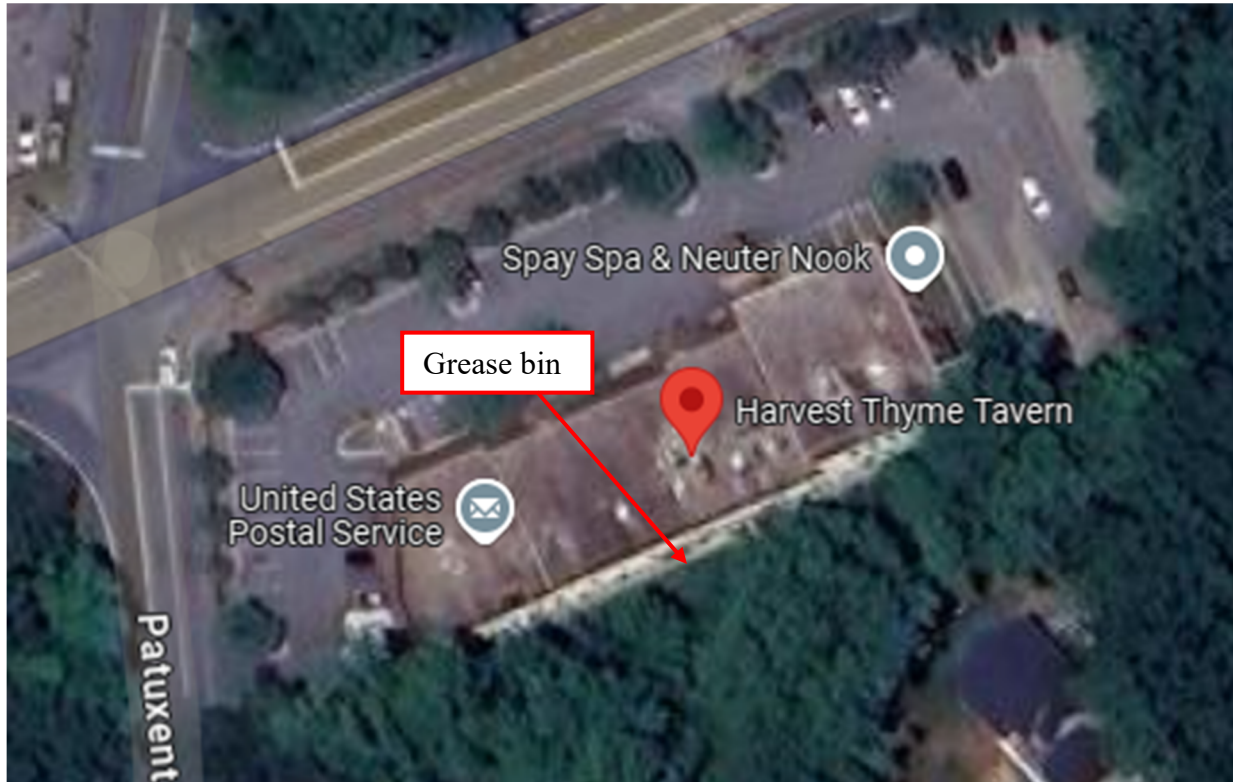


10/18/2024 Inspection – One of many large sand/stone stockpiles on this site being improperly stored.

**Anne Arundel County Systematic IDDE Outfall Screening
Upland Pollution Report
Harvest Thyme Tavern**

On October 18th, 2024, while performing commercial industrial inspections for Anne Arundel County, KCI Technologies, Inc. discovered a grease bin with moderate staining on the pavement behind Harvest Thyme Tavern.

LOCATION: 1251 W Central Ave, Davidsonville, MD 21035





10/18/2024 Inspection – Grease bin with staining on asphalt surrounding it.

**Anne Arundel County Systematic IDDE Outfall Screening
Upland Pollution Report
Miller's Auto Services**

On October 18th, 2024, while performing commercial industrial inspections for Anne Arundel County, KCI Technologies, Inc. discovered a stone stockpile being improperly stored on the property of Miller's Auto Services.

LOCATION: 669 W Central Ave, Davidsonville, MD 21035





10/18/2024 Inspection – Stone stockpile being improperly stored.

**Anne Arundel County Systematic IDDE Outfall Screening
Upland Pollution Report
Statewide Septic and Backhoe**

On October 18th, 2024, while performing commercial industrial inspections for Anne Arundel County, KCI Technologies, Inc. discovered a stockpile of varying materials including dirt, trash and gravel being improperly stored on the property of Statewide Septic and Backhoe.

LOCATION: 436 W Central Ave, Davidsonville, MD 21035





10/18/2024 Inspection – Stockpile of various debris types being improperly stored.

**Anne Arundel County Systematic IDDE Outfall Screening
Upland Pollution Report
Statewide Septic & Backhoe**

On October 22nd, 2024, while performing commercial industrial inspections for Anne Arundel County, KCI Technologies, Inc. discovered a gravel stockpile and a debris stockpile being improperly stored on the property of Statewide Septic & Backhoe.

LOCATION: 3259 Beards Point Rd, Davidsonville, MD 21035



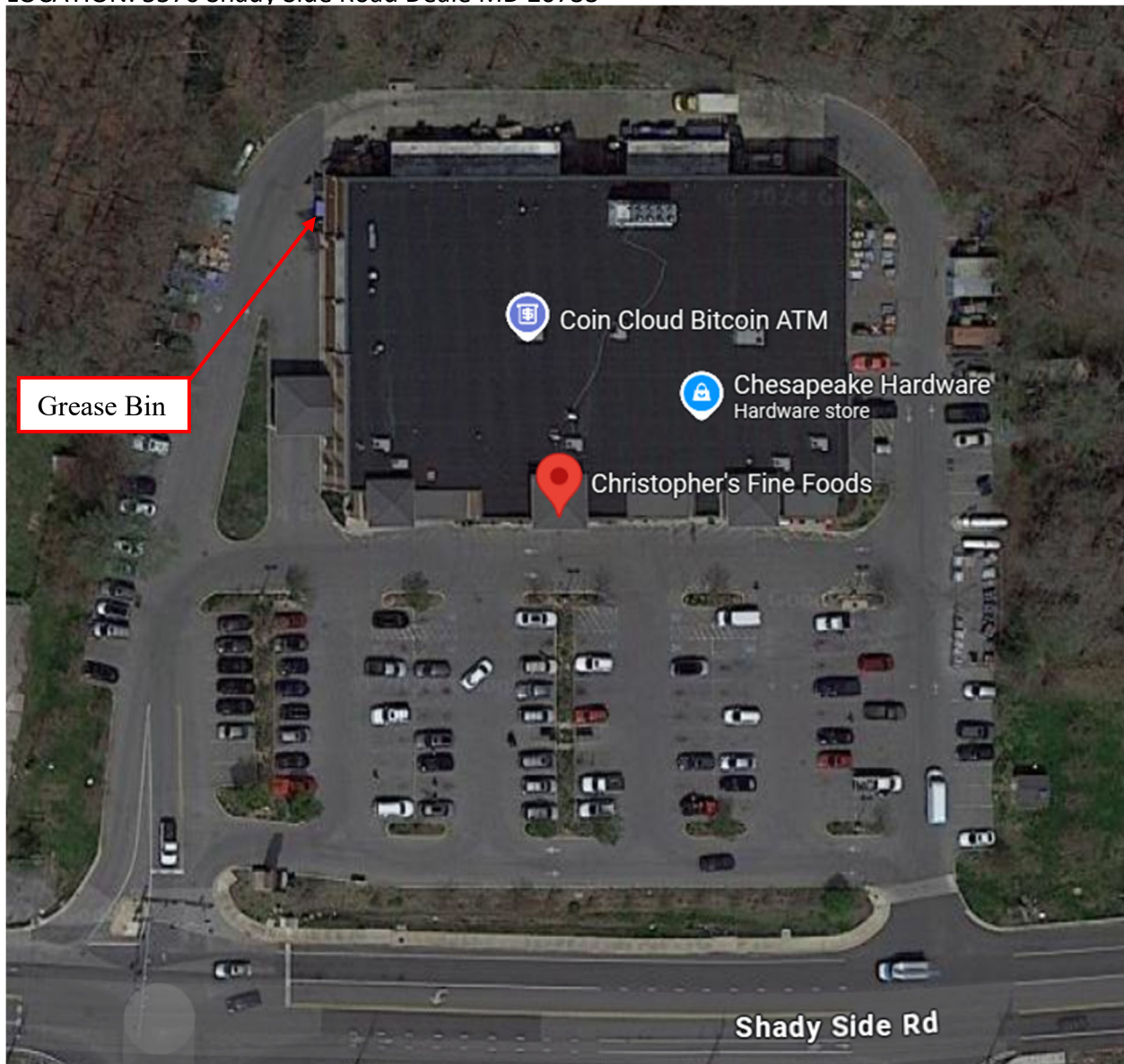


10/22/2024 Inspection – Massive gravel stockpile and debris pile.

**Anne Arundel County Systematic IDDE Outfall Screening
Upland Pollution Report
Christopher's Fine Foods**

On October 30, 2024, while performing commercial industrial inspections for Anne Arundel County, KCI Technologies, Inc. discovered a grease bin with heavy staining on the pavement behind Christopher's Fine Foods.

LOCATION: 5570 Shady Side Road Deale MD 20733





10/30/2024 Inspection – Grease bin with heavy staining on the surrounding asphalt and concrete.

**Anne Arundel County Systematic IDDE Outfall Screening
Upland Pollution Report
Happy Harbor Restaurant**

On October 30, 2024, while performing commercial industrial inspections for Anne Arundel County, KCI Technologies, Inc. discovered a grease bin with staining on and around itself at Happy Harbor Restaurant.

LOCATION: 533 Deale Rd Deale MD 20751





10/30/2024 Inspection – Grease bin with staining on and around it.

**Anne Arundel County Systematic IDDE Outfall Screening
Upland Pollution Report
Herrington Harbour North**

On October 30, 2024, while performing commercial industrial inspections for Anne Arundel County, KCI Technologies, Inc. discovered multiple dirt/sand/stone stockpiles on the property of Herrington Harbour North.

LOCATION: 389 Deale Rd Tracys Landing MD 20779





10/30/2024 Inspection – Multiple large stockpiles of gravel, sand, and dirt.

**Anne Arundel County Systematic IDDE Outfall Screening
Upland Pollution Report
Skipper's Pier Restaurant & Dock Bar**

On October 30, 2024, while performing commercial industrial inspections for Anne Arundel County, KCI Technologies, Inc. discovered a grease bin with heavy staining on the pavement and on itself behind Skipper's Pier Restaurant & Dock Bar.

LOCATION: 6158 Drum Point Rd Deale MD 20751





10/30/2024 Inspection – Grease bin with heavy staining on itself and surrounding concrete.

**APPENDIX D | ANNE ARUNDEL COUNTY COMPLIANCE DATABASE
REPORT**



Complainant Information

Source

Anonymous

▼

Case Information

Complaint

Environment

▼

ILLEGAL DISCHARGES COMPLAINT

▼

Summary

Auto cleaning service operating out of garage, discharge going into the road and into the MS4.

Address

290390067547

1603

AIRY HILL

CT

CROFTON

MD

21114

Subdivision

Subdivision

Location Details

Location Details

Received Date

🕒

07/12/2024 09:52 AM

System ID

115770

Tickler Date

🕒

07/22/2024 09:52 AM

Case ID

E-2024-301

Completed Date

🕒

Receiver

Bradlee Burnham

▼

Owner Information

WILLIAM

SCHIPPER

(XXX)-XXX-XXXX

Owner, Second Name

Company Name

Email

Address

1603

AIRY HILL

CT

CROFTON

MD

21114

District

7

Shannon Leadbetter

Violator Information

☐ Set Violator Same as Owner

First Name

Last Name

(XXX)-XXX-XXXX

Violator Second Name

Company Name

Address

House Number

Street Name

Street Type

City

State

Zip

Assignment Information

Date Assigned

07/12/2024 09:52 AM

Inspector

Andrew Hein (current caseload: 38)

▼

Supervisor

Bradlee Burnham

▼

Warning

Please, select row

Permit Number

Waterfront

▼

Original Case ID

Critical Area

▼

ADC Map

Cty. Council

▼

Case Organization

Case Details

Auto cleaning service operating out of garage, discharge going into the road and into the MS4. Discharge to the MS4 from an auto cleaning service is not allowed. Per the County's MS4 Permit, only individual residential car washing is allowed to discharge to the MS4, and must be properly managed if doing so. Discharge from an auto cleaning service must either: 1) go into the County's sanitary sewer system (with the proper permits from DPW); or 2) go into a holding tank, or somehow contained/reclaimed by the business operators, for collection, and then disposal at an approved site. Any discharge to the MS4 from an auto cleaning service, from multi-residential car washing, or from improperly managed individual residential car washing, is a violation of Anne Arundel County Code, Article 16, Title 5, ?16-5-101, ?(6): "It is a violation of this article to spill, dump or dispose of any material or substance other than natural stormwater runoff to a stormdrain or watercourse unless authorized by a valid NPDES permit issued by the State of Maryland."

Date

07/12/2024 10:11 AM

Fine

\$

0

Due Date

07/17/2024 10:11 AM

Amount Paid

\$

Req Trial Date

07/12/2024 10:11 AM

Fine Due Date

07/12/2024 10:11 AM

Fine Paid Date

Details

Auto cleaning service operating out of garage, discharge going into the road and into the MS4. Discharge to the MS4 from an auto cleaning service is not allowed. Per the County's MS4 Permit, only individual residential car washing is allowed to discharge to the MS4, and must be properly managed if doing so. Discharge from an auto cleaning service must either: 1) go into the County's sanitary sewer system (with the proper permits from DPW); or 2) go into a holding tank, or somehow contained/reclaimed by the business operators, for collection, and then disposal at an approved site. Any discharge to the MS4 from an auto cleaning service, from multi-residential car washing, or from improperly managed individual residential car washing, is a violation of Anne Arundel County Code, Article 16, Title 5, §16-5-101, ¶(6): "It is a violation of this article to spill, dump or dispose of any material or substance other than natural stormwater runoff to a stormdrain or watercourse unless authorized by a valid NPDES permit issued by the State of Maryland."

Citation #

Resolved

Active Permit Application Information

Type	Permit #	Status	
------	----------	--------	--

Other Cases On This Property

Case #	Received Date	Status	Summary	
--------	---------------	--------	---------	--

Related Cases

type a case number or click to see related cases

Closed

Case Timeline

First Closed on Jul 15, 2024 by Andrew Hein

Last updated on Jul 15, 2024 by Andrew Hein



OPENED COMPLAINT CASE

Auto cleaning service operating out of garage, discharge going into the road and into the MS4. Discharge to the MS4 from an auto cleaning service is not allowed. Per the County's MS4 Permit, only individual residential car washing is allowed to discharge to the MS4, and must be properly managed if doing so. Discharge from an auto cleaning service must either: 1) go into the County's sanitary sewer system (with the proper permits from DPW); or 2) go into a holding tank, or somehow contained/reclaimed by the business operators, for collection, and then disposal at an approved site. Any discharge to the MS4 from an auto cleaning service, from multi-residential car washing, or from improperly managed individual residential car washing, is a violation of Anne Arundel County Code, Article 16, Title 5, §16-5-101, ¶(6): "It is a violation of this article to spill, dump or dispose of any material or substance other than natural stormwater runoff to a stormdrain or watercourse unless authorized by a valid NPDES permit issued by the State of Maryland."

JULY 12, 2024 by: ipburn22

Created on Jul 12, 2024 by Bradlee Burnham



Complainant Information

Source

Anonymous

▼

Case Information

Complaint

Environment

▼

ILLEGAL DISCHARGES COMPLAINT

▼

Summary

Dry cleaning business occupies building. Six pipes draining out of building into alleyway, may be something other th

Address

400003264810

1640

ANNAPOLIS

RD

ODENTON

MD

21113

Subdivision

Subdivision

Location Details

Location Details

Received Date

🕒

07/12/2024 10:56 AM

System ID

115771

Tickler Date

🕒

07/22/2024 10:56 AM

Case ID

E-2024-302

Completed Date

🕒

Receiver

Bradlee Burnham

▼

Owner Information

SUSAN

YI

(XXX)-XXX-XXXX

IGNACIO JENNIFER YI

Company Name

Email

Address

1636

ANNAPOLIS

RD

ODENTON

MD

21113

District

4

Julie Hummer

Violator Information

☐ Set Violator Same as Owner

First Name

Last Name

(XXX)-XXX-XXXX

Violator Second Name

Company Name

Address

House Number

Street Name

Street Type

City

State

Zip

Assignment Information

Date Assigned

07/12/2024 10:56 AM

Inspector

Andrew Hein (current caseload: 38)

Supervisor

Bradlee Burnham

Permit Number

Waterfront

Original Case ID

Critical Area

ADC Map

Cty. Council

Case Organization

Case Details

Dry cleaning business occupies building. Six pipes draining out of building into alleyway, may be discharging something other than clean water. Per the County's MS4 Permit, non-stormwater discharges are prohibited from entering the MS4 or watercourses. While there are exceptions for certain sources as long as they're properly managed, effluent from dry cleaning operations is not one of them. According to Anne Arundel County Code, Article 16, Title 5, ?16-5-101, ?(6): "It is a violation of this article to spill, dump or dispose of any material or substance other than natural stormwater runoff to a stormdrain or watercourse unless authorized by a valid NPDES permit issued by the State of Maryland."

Active Permit Application Information

Type	Permit #	Status	
------	----------	--------	--

Other Cases On This Property

Case #	Received Date	Status	Summary	
--------	---------------	--------	---------	--

Related Cases

type a case number or click to see related cases

Closed

Case Timeline

First Closed on Aug 27, 2024 by Andrew Hein

Last updated on Aug 27, 2024 by Andrew Hein



Note

this has be transfered for another group to handle

AUGUST 27, 2024 by: iphein99



OPENED COMPLAINT CASE

Dry cleaning business occupies building. Six pipes draining out of building into alleyway, may be discharging something other than clean water. Per the County's MS4 Permit, non-stormwater discharges are prohibited from entering the MS4 or watercourses. While there are exceptions for certain sources as long as they're properly managed, effluent from dry cleaning operations is not one of them. According to Anne Arundel County Code, Article 16, Title 5, §16-5-101, ¶(6): "It is a violation of this article to spill, dump or dispose of any material or substance other than natural stormwater runoff to a stormdrain or watercourse unless authorized by a valid NPDES permit issued by the State of Maryland."

JULY 12, 2024 by: ipburn22

Created on Jul 12, 2024 by Bradlee Burnham



Complainant Information

Source

SeeClickFix

▼

Case Information

Complaint

Environment

▼

ILLEGAL DISCHARGES COMPLAINT

▼

Summary

Discolored sump pump discharge, killing neighbor's grass

Address

441190224491

1615

SIRANI

LN

GAMBRILLS

MD

21054

Subdivision

Subdivision

Location Details

Location Details

Received Date

🕒

08/20/2024 10:02 AM

System ID

116040

Tickler Date

🕒

08/30/2024 10:02 AM

Case ID

E-2024-359

Completed Date

🕒

Receiver

Jackie Gholson

▼

Owner Information

JEANETTE

ROHRER

(XXX)-XXX-XXXX

ROHRER LAKEN

Company Name

Email

Address

1615

SIRANI

LN

GAMBRILLS

MD

21054

District

District

Council Member

Violator Information

☐ Set Violator Same as Owner

First Name

Last Name

(XXX)-XXX-XXXX

Violator Second Name

Company Name

Address

House Number

Street Name

Street Type

City

State

Zip

Assignment Information

Date Assigned

08/20/2024 10:02 AM

Inspector

Andrew Hein (current caseload: 38)

Supervisor

Bradlee Burnham

Permit Number

Waterfront

N

Original Case ID

Critical Area

N

ADC Map

Cty. Council

N

Case Organization

Case Details

Active Permit Application Information

Type	Permit #	Status	
------	----------	--------	--

Other Cases On This Property

Case #	Received Date	Status	Summary	
--------	---------------	--------	---------	--

Related Cases

type a case number or click to see related cases

Open▼

Case Timeline+

Last updated on Aug 20, 2024 by Jackie Gholson

Created on Aug 20, 2024 by Jackie Gholson



Complainant Information

Source

Person

Doug

Griffith

(XXX)-XXX-XXXX

Email

Case Information

Complaint

Environment

ILLEGAL DISCHARGES COMPLAINT

Summary

Uncovered salt pile in Lowe's parking lot (see attached KCI report)

Address

500090040646

6716

RITCHIE

HWY

GLEN BURNIE

MD

21061

Subdivision

Subdivision

Location Details

Southwestern corner of parking lot (see attached KCI report)

Received Date

09/05/2024 10:55 AM

System ID

116168

Tickler Date

09/15/2024 12:58 PM

Case ID

E-2024-391

Completed Date

Receiver

Kyle Frederickson

Owner Information

SQUARE SHOPPING CENTER

CHESAPEAKE

(XXX)-XXX-XXXX

Owner, Second Name

Company Name

Email

Address

6716

RITCHIE

HWY

GLEN BURNIE

MD

21061

District

1

Pete Smith

Violator Information

☒ Set Violator Same as Owner

SQUARE SHOPPING CENTER

CHESAPEAKE

(XXX)-XXX-XXXX

Violator Second Name

Company Name

Address

6716

RITCHIE

HWY

GLEN BURNIE

MD

21061

Assignment Information

Date Assigned

09/05/2024 12:58 PM

Inspector

Kyle Frederickson (current caseload: 32)

Supervisor

Bradlee Burnham

Permit Number

Waterfront

Original Case ID

Critical Area

ADC Map

Cty. Council

Case Organization

Case Details

Received the attached KCI IDDE report from Supervisor (Brad Burnham) today to investigate uncovered salt pile in the Lowe's parking lot.

Active Permit Application Information

Type	Permit #	Status	
------	----------	--------	--

Other Cases On This Property

Case #	Received Date	Status	Summary	
--------	---------------	--------	---------	--

Related Cases

type a case number or click to see related cases

Closed

▼

Case Timeline

First Closed on Sep 05, 2024 by Kyle Frederickson

Last updated on Sep 05, 2024 by Kyle Frederickson



Note

Investigated area in question from KCI report. There is currently no salt pile, but I did speak with a shift manager to let them know for the upcoming winter that any salt piles will need to be covered when not in use.

SEPTEMBER 5, 2024 by: ipfred23

Created on Sep 05, 2024 by Kyle Frederickson



Complainant Information

Source

Person

DougGriffith(XXX)-XXX-XXXXEmail

Case Information

Complaint

Environment

ILLEGAL DISCHARGES COMPLAINT

Summary

Pre-washing runoff at car wash potentially making its way to storm drain.

Address

500016577500

100HOLSUMWAY

GLEN BURNIEMD21060

Subdivision

Subdivision

Location Details

Location Details

Received Date

🕒

09/05/2024 10:55 AM

System ID

116169

Tickler Date

🕒

09/15/2024 01:13 PM

Case ID

E-2024-392

Completed Date

🕒

Receiver

Kyle Frederickson

Owner Information

First NameLast Name(XXX)-XXX-XXXX

Owner, Second Name

100 HOLSUM LLCEmail

Address

100HOLSUMWAY

GLEN BURNIEMD21060

District

1

Pete Smith

Violator Information

☒ Set Violator Same as Owner

First NameLast Name(XXX)-XXX-XXXX

Violator Second Name

100 HOLSUM LLC

Address

100

HOLSUM

WAY

GLEN BURNIE

MD

21060

Assignment Information

Date Assigned

🕒

09/05/2024 01:13 PM

Warning

Please, select row

Inspector

Kyle Frederickson (current caseload: 32)

Superv

Bradlee Burnham

Permit Number

Waterfront

Original Case ID

Critical Area

ADC Map

Cty. Council

Case Organization

Case Details

Received the attached KCI IDDE report from Supervisor (Brad Burnham) today to investigate pre-wash runoff from car wash operations potentially making its way to a storm drain.

Active Permit Application Information

Type	Permit #	Status	
------	----------	--------	--

Other Cases On This Property

Case #	Received Date	Status	Summary	
--------	---------------	--------	---------	--

Related Cases

type a case number or click to see related cases

Closed

▼

Case Timeline

First Closed on Sep 05, 2024 by Kyle Frederickson

Last updated on Sep 05, 2024 by Kyle Frederickson



Note

Investigated car wash and found no pre-washing currently taking place. Also, verified that the car wash infrastructure on site is not tied to any storm drains. The car wash is piped to an on-site sump pit/grinder pump system that is tied into to the County sanitary sewer (2" force main) on Holsum Way.

SEPTEMBER 5, 2024 by: ipfred23

Created on Sep 05, 2024 by Kyle Frederickson



Complainant Information

Source

Anonymous

▼

Case Information

Complaint

Environment

▼

ILLEGAL DISCHARGES COMPLAINT

▼

Summary

Homeowner dumping oil in their yard and on an adjacent access road. Location of the dumping is along the woodlir

Address

400090211941

692

QUAIL

DR

GLEN BURNIE

MD

21061

Subdivision

Subdivision

Location Details

Private Driveway

Received Date

🕒

09/16/2024 07:17 AM

System ID

116220

Tickler Date

🕒

09/26/2024 07:17 AM

Case ID

E-2024-400

Completed Date

🕒

Receiver

Bradlee Burnham

▼

Owner Information

FOSSEN DAWN

VAN

(XXX)-XXX-XXXX

VAN FOSSEN RYAN

Company Name

Email

Address

692

QUAIL

DR

GLEN BURNIE

MD

21061

District

2

Allison Pickard

Violator Information

☒ Set Violator Same as Owner

Ryan

Van Fossen

(XXX)-XXX-XXXX

Dawn Van Fossen

Company Name

Address

692

Quail

Dr

Glen Burnie

Maryland

21061

Assignment Information

Date Assigned

09/16/2024 07:17 AM

Inspector

Kyle Frederickson (current caseload: 32)

Supervisor

Bradlee Burnham

Permit Number

Waterfront

Original Case ID

Critical Area

ADC Map

Cty. Council

Case Organization

Case Details

Case referral from MDE. Anonymous complaint. Homeowner dumping oil in their yard and on an adjacent access road. Location of the dumping is along the woodline at 692 Quail Dr. in Glen Burnie.

Active Permit Application Information

Type	Permit #	Status	
------	----------	--------	--

Other Cases On This Property

Case #	Received Date	Status	Summary	
--------	---------------	--------	---------	--

Related Cases

type a case number or click to see related cases

Closed

▼

Case Timeline

First Closed on Apr 09, 2025 by Kyle Frederickson

Last updated on Apr 09, 2025 by Kyle Frederickson



Note

This case was originally closed on 10/18/2024. Not sure why it was re-opened and lost previous updates. On 10/18/2024, I met with the property owner to investigate the area in question. Did not find any evidence of illegal dumping.

APRIL 9, 2025 by: ipfred23

Created on Sep 16, 2024 by Bradlee Burnham



Complainant Information

Source SeeClickFix

Case Information

Complaint Environment ILLEGAL DISCHARGES COMPLAINT

Summary Draining swimming pool into the street

Address 416290064553

1001 ICE CASTLE CT

GAMBRILLS MD 21054

Subdivision Subdivision

Location Details Location Details

Received Date 09/23/2024 01:58 PM System ID 116289

Tickler Date 10/03/2024 01:58 PM Case ID E-2024-416

Completed Date

Receiver Jackie Gholson

Owner Information

CHRISTOS KOTSIS (XXX)-XXX-XXXX

KOTSIS HEATHER C

Company Name Email

Address 1001 ICE CASTLE CT

GAMBRILLS MD 21054

District 4 Julie Hummer

Violator Information

☐ Set Violator Same as Owner

First Name Last Name (XXX)-XXX-XXXX

Violator Second Name

Company Name

Address

House Number

Street Name

Street Type

City

State

Zip

Assignment Information

Date Assigned

09/23/2024 01:58 PM

Inspector

Andrew Hein (current caseload: 38)

Supervisor

Bradlee Burnham

Permit Number

Waterfront

N

Original Case ID

Critical Area

N

ADC Map

Cty. Council

N

Case Organization

Case Details

Active Permit Application Information

Type	Permit #	Status	
------	----------	--------	--

Other Cases On This Property

Case #	Received Date	Status	Summary	
--------	---------------	--------	---------	--

Related Cases

type a case number or click to see related cases

Open▼

Case Timeline+

Last updated on Sep 23, 2024 by Jackie Gholson

Created on Sep 23, 2024 by Jackie Gholson



Complainant Information

Source SeeClickFix

Case Information

Complaint Environment ILLEGAL DISCHARGES COMPLAINT

Summary Truck leaking fuel into street

Address 513017941750

41 THOMAS RD

GLEN BURNIE MD 21060

Subdivision Subdivision

Location Details Location Details

Received Date 04/04/2025 03:45 PM System ID 117110

Tickler Date 04/14/2025 03:45 PM Case ID E-2025-1078

Completed Date

Receiver Jackie Gholson

Owner Information

BRITTANY ALINA MCQUAIN (XXX)-XXX-XXXX

SOBIK ROBERT WILLIAM

Company Name Email

Address 41 THOMAS RD

GLEN BURNIE MD 21060

District 2 Allison Pickard

Violator Information

☐ Set Violator Same as Owner

First Name Last Name (XXX)-XXX-XXXX

Violator Second Name

Company Name

Address

House Number

Street Name

Street Type

City

State

Zip

Assignment Information

Date Assigned

04/04/2025 03:45 PM

Inspector

Kyle Frederickson (current caseload: 32)

▼

Supervisor

Bradlee Burnham

▼

Warning

✖

Please, select row

Permit Number

Waterfront

N

▼

Original Case ID

Critical Area

Y

▼

ADC Map

Cty. Council

N

▼

Case Organization

Case Details

Active Permit Application Information

Type	Permit #	Status	
------	----------	--------	--

Other Cases On This Property

Case #	Received Date	Status	Summary	
--------	---------------	--------	---------	--

Related Cases

type a case number or click to see related cases

Closed

Case Timeline

First Closed on Apr 09, 2025 by Kyle Frederickson

Last updated on Apr 09, 2025 by Kyle Frederickson



Note

Investigated area/property per the complaint. At time of investigation, did not witness any active fuel leaks and there were no vehicles parked on the street. There was a boat parked down the street from property in question, but had no active leaking. Closing case for illicit/illegal discharge at this time, but will monitor in the future. In regards to the cinder blocks on the street, I did see some that were broken up in the curb/gutter line. Requests for trash/debris/litter removal, please contact your local road district to make a report (Eastern Road District - 410-222-6120).

APRIL 9, 2025 by: ipfred23

Created on Apr 04, 2025 by Jackie Gholson



Complainant Information

Source

Anonymous

▼

Case Information

Complaint

Environment

▼

ILLEGAL DISCHARGES COMPLAINT

▼

Summary

TRASH AND LITTER DUMPED IN CREEK "CREEK IS BETWEEN 1110 AND 1130 ANANPOLIS ROAD (PICTURE SPRING BF

Address

400090061804

1130

ANNAPOLIS

RD

ODENTON

MD

21113

Subdivision

Subdivision

Location Details

Location Details

Received Date

🕒

04/09/2025 11:07 AM

System ID

117135

Tickler Date

🕒

04/19/2025 11:07 AM

Case ID

E-2025-1082

Completed Date

🕒

Receiver

Joyce McNeil

▼

Owner Information

First Name

Last Name

(XXX)-XXX-XXXX

Owner, Second Name

WINMARK LTD PTNSHP

Email

Address

1130

ANNAPOLIS

RD

ODENTON

MD

21113

District

4

Julie Hummer

Violator Information

☒ Set Violator Same as Owner

First Name

Last Name

(XXX)-XXX-XXXX

Violator Second Name

WINMARK LTD PTNSHP

Address

1130

ANNAPOLIS

RD

ODENTON

MD

21113

Assignment Information

Date Assigned

04/09/2025 11:07 AM

Inspector

Andrew Hein (current caseload: 38)

Supervisor

Bradlee Burnham

Permit Number

Waterfront

N

Original Case ID

Critical Area

N

ADC Map

Cty. Council

Case Organization

Case Details

Active Permit Application Information

Type	Permit #	Status	
------	----------	--------	--

Other Cases On This Property

Case #	Received Date	Status	Summary	
--------	---------------	--------	---------	--

Related Cases

type a case number or click to see related cases

Open

▼

Case Timeline +

Last updated on Apr 09, 2025 by Joyce McNeil

Created on Apr 09, 2025 by Joyce McNeil



Complainant Information

Source SeeClickFix

Case Information

Complaint Environment ILLEGAL DISCHARGES COMPLAINT

Summary Draining washing machine water into yard

Address 300027794600

69 LAKE SHORE DR

PASADENA MD 21122

Subdivision Subdivision

Location Details Location Details

Received Date 04/15/2025 10:45 AM System ID 117172

Tickler Date 04/25/2025 10:45 AM Case ID E-2025-1099

Completed Date

Receiver Jackie Gholson

Owner Information

BARBARA HOLT (XXX)-XXX-XXXX

Owner, Second Name

Company Name Email

Address 69 LAKE SHORE DR

PASADENA MD 21122

District 3 Nathan Volke

Violator Information

☐ Set Violator Same as Owner

First Name Last Name (XXX)-XXX-XXXX

Violator Second Name

Company Name

Address

House Number

Street Name

Street Type

City

State

Zip

Assignment Information

Date Assigned

04/15/2025 10:45 AM

Inspector

Mary Ford (current caseload: 43)

Supervisor

Bradlee Burnham

Permit Number

Waterfront

N

Original Case ID

Critical Area

N

ADC Map

Cty. Council

N

Case Organization

Case Details

Draining washing machine water into yard

Active Permit Application Information

Type	Permit #	Status	
------	----------	--------	--

Other Cases On This Property

Case #	Received Date	Status	Summary	
--------	---------------	--------	---------	--

Related Cases

type a case number or click to see related cases

In Work

▼

Case Timeline

Last updated on Apr 16, 2025 by Mary Ford



CLOSE COMPLAINT

DUE TO THE REGISTERED SEPTIC SYSTEM WITH THE DEPARTMENT OF HEALTH, AND NATURE OF COMPLAINT IS SPECIFIC TO AN ALLEGED DISCONNECTION FROM A SANITARY SYSTEM/SEPTIC SYSTEM AND/OR DRAIN FIELD, THE DEPARTMENT OF HEALTH IS LEAD AGENCY TO ADDRESS SINCE THERE HAS BEEN NO DIRECT OBSERVATION/WITNESSING OF THE VIOLATION BY A COUNTY INSPECTOR OR SUBMITTED DATE STAMPED GEO REFERNCED VIDEO EVIDENCE OF THE VIOLATION ACTIVELY OCCURING. INSPECTOR FORD, WHILE CONDUCTING ROUTINE INSPECTIONS IN THE PASADENA AREA MAY CONTINUE TO MONITOR LOCATION AND IF SOAPY WASHING MACHINE DISCHARGE IS OBSERVED, WILL RE-OPEN CASE.

APRIL 28, 2025 by: ipford22



Customer Contact

INSPECTION ATTEMPTED, NO PERMISSION TO ACCESS PROPERTY. NO EVIDENCE OR OBSERVATION OF ACTIVE OR PRIOR WASHING MACHINE SOAPY DISCHARGE.

APRIL 28, 2025 by: ipford22



Customer Contact

INSPECTION ATTEMPTED, NO PERMISSION TO ACCESS PROPERTY. NO EVIDENCE OR OBSERVATION OF ACTIVE OR PRIOR WASHING MACHINE SOAPY DISCHARGE

APRIL 28, 2025 by: ipford22



OPENED COMPLAINT CASE

INSPECTOR FORD CONDUCTED DESKTOP REVIEW OF THE SITE LOCATION TO DETERMINE IF THE PROPERTY HAS AN EXISTING STORMWATER MANAGEMENT INSPECTION DUE, IF THE SITE IS CRITICAL/SENSITIVE AREA, WATERFRONT AND/OR PROBLEMATIC SEPTIC AREA. SITE DOES NOT HAVE STORMWATER MANAGEMENT, PRE-DATES STORMWATER MANAGEMENT AGREEMENT REQUIREMENT. PROPERTY DOES HAVE A SEPTIC SYSTEM. DUE TO THE EXISTING SEPTIC SYSTEM AND NATURE OF COMPLAINT, THE DEPARTMENT OF HEALTH TEAM WILL BE NOTIFIED OF THE POSSIBLE ALLEGED DISCONNECTION FROM REQUIRED SANITARY TREATMENT. COMPLAINT WILL BE DUALY ADDRESSED BY BOTH AGENCIES.

APRIL 28, 2025 by: ipford22

Created on Apr 15, 2025 by Jackie Gholson



Complainant Information

Source SeeClickFix

Case Information

Complaint Environment ILLEGAL DISCHARGES COMPLAINT

Summary Draining swimming pool into sewer

Address 316523653120

1218 RAMBLEWOOD DR

ANNAPOLIS MD 21409

Subdivision Subdivision

Location Details Location Details

Received Date 04/15/2025 02:46 PM System ID 117183

Tickler Date 04/25/2025 02:46 PM Case ID E-2025-1102

Completed Date

Receiver Jackie Gholson

Owner Information

GEORGE KELLENBENZ (XXX)-XXX-XXXX

Owner, Second Name

Company Name Email

Address 1218 RAMBLEWOOD DR

ANNAPOLIS MD 21409

District 5 Amanda Fiedler

Violator Information

☐ Set Violator Same as Owner

First Name Last Name (XXX)-XXX-XXXX

Violator Second Name

Company Name

Address

House Number

Street Name

Street Type

City

State

Zip

Assignment Information

Date Assigned

04/15/2025 02:46 PM

Inspector

Joseph Wells (current caseload: 8)

Supervisor

Bradlee Burnham

Permit Number

Waterfront

N

Original Case ID

Critical Area

N

ADC Map

Cty. Council

N

Case Organization

Case Details

Active Permit Application Information

Type	Permit #	Status	
------	----------	--------	--

Other Cases On This Property

Case #	Received Date	Status	Summary	
--------	---------------	--------	---------	--

Related Cases

type a case number or click to see related cases

Open▼

Case Timeline

Last updated on Jun 06, 2025 by Bradlee Burnham

Created on Apr 15, 2025 by Jackie Gholson



Complainant Information

Source

Anonymous

▼

Case Information

Complaint

Environment

▼

ILLEGAL DISCHARGES COMPLAINT

▼

Summary

ILLEGAL DUMPING POOL WATER

Address

175090218063

111

MULBERRY

CT

EDGEWATER

MD

21037

Subdivision

Subdivision

Location Details

Location Details

Received Date

🕒

05/07/2025 09:42 AM

System ID

117323

Tickler Date

🕒

05/17/2025 09:42 AM

Case ID

E-2025-1137

Completed Date

🕒

Receiver

Joyce McNeil

▼

Owner Information

JUSTIN

GOLDSTON

(XXX)-XXX-XXXX

GOLDSTON JACQUELINE L

Company Name

Email

Address

111

MULBERRY

CT

EDGEWATER

MD

21037

District

7

Shannon Leadbetter

Violator Information

☒ Set Violator Same as Owner

JUSTIN

GOLDSTON

(XXX)-XXX-XXXX

GOLDSTON JACQUELINE L

Company Name

Address

111

MULBERRY

CT

EDGEWATER

MD

21037

Assignment Information

Date Assigned

05/07/2025 09:42 AM

Inspector

Andrew Fertig (current caseload: 26)

Supervisor

Bradlee Burnham

Permit Number

Waterfront

Original Case ID

Critical Area

ADC Map

Cty. Council

Case Organization

Case Details

Active Permit Application Information

Type	Permit #	Status	
------	----------	--------	--

Other Cases On This Property

Case #	Received Date	Status	Summary	
--------	---------------	--------	---------	--

Related Cases

type a case number or click to see related cases

Closed

Case Timeline

First Closed on May 07, 2025 by Andrew Fertig

Last updated on May 07, 2025 by Andrew Fertig



Note

Inspected the property pumping from the pool. Homeowner was not home but contractors were on-site doing work to the pool. It was determined they were pumping rain water from the weekend/that day and it was not chlorinated. Closing case

MAY 7, 2025 by: ipfert21

Created on May 07, 2025 by Joyce McNeil



Complainant Information

Source

Person

John

Settino

4438896798

johnset1233@gmail.com

Case Information

Complaint

Environment

ILLEGAL DISCHARGES COMPLAINT

Summary

STRONG SMELL OF LAUNDRY SOAP FROM STORM DRAIN ON HIS PROPERTY IN ROW

Address

308033699000

7819

LINTHICUM

RD

PASADENA

MD

21122

Subdivision

Subdivision

Location Details

Location Details

Received Date

🕒

05/07/2025 10:11 AM

System ID

117326

Tickler Date

🕒

05/17/2025 10:11 AM

Case ID

E-2025-1138

Completed Date

🕒

Receiver

Mary Ford

Owner Information

JOHN

SETTINO

(XXX)-XXX-XXXX

SATER KAREN S

Company Name

Email

Address

7819

LINTHICUM

RD

PASADENA

MD

21122

District

3

Nathan Volke

Violator Information

☐ Set Violator Same as Owner

First Name

Last Name

(XXX)-XXX-XXXX

Violator Second Name

Company Name

Address

House Number

Street Name

Street Type

City

State

Zip

Assignment Information

Date Assigned

05/07/2025 10:11 AM

Inspector

Mary Ford (current caseload: 43)

Superv

Bradlee Burnham

Permit Number

Waterfront

N

Original Case ID

Critical Area

N

ADC Map

Cty. Council

Case Organization

Case Details

STRONG SMELL OF LAUNDRY SOAP FROM STORM DRAIN ON HIS PROPERTY IN ROW

Active Permit Application Information

Type	Permit #	Status	
------	----------	--------	--

Other Cases On This Property

Case #	Received Date	Status	Summary	
--------	---------------	--------	---------	--

Related Cases

type a case number or click to see related cases

In Work

▼

Case Timeline

Last updated on May 20, 2025 by Jackie Gholson



Note

INSPECTOR FORD CONDUCTED AN ON-SITE INVESTIGATION ON 5/7/2025, COMMENCING WITH THE SPECIFIED INLET AND TRACING UPLAND TO ATTEMPT TO LOCATE THE ALLEGED LAUNDRY SOAP GRAY WATER DISCHARGE SOURCE. AT THE TIME OF THE INSPECTION, NO SOAPY DISCHARGE OR SUDS WERE OBSERVED, NOR WAS THE ODOR OF LAUNDRY SOAP DETECTED. WATER SAMPLE TAKEN AT INLET OFF CHESAPEAKE DRIVE TO BE TESTED FOR DETERGENTS. IF THE DISCHARGE IS CAUSED BY A DISCONNECTION FROM A SEPTIC TANK, DRAIN FIELD, OR SANITARY SYSTEM; THE AACO DEPARTMENT OF HEALTH WILL BE ENGAGED TO ADDRESS THE DISCONNECTION. COMPLAINT WILL REMAIN OPEN IN ATTEMPT TO OBSERVE ALLEGED LAUNDRY SOAP DISCHARGE. DURING INITIAL INSPECTION, PERMISSION GRANTED TO ACCESS STORM DRAIN EASEMENT ON CHESAPEAKE ROAD. CASE REMAINS OPEN WITH ADDITIONAL ON-GOING INSPECTIONS TO FOLLOW.

MAY 12, 2025 by: ipford22



OPENED COMPLAINT CASE

WENDY HUANG, MDE WATER COMPLIANCE SPECIALST RECEIVED A COMPLAINT ALLEGING THE ODOR AND SUSPECTED DISCHARGE OF LAUNDRY SOAP FROM A COUNTY STORM INLET LOCATED NEAR THE COMPLAINANTS PROPERTY. MDE REFERS IDDE COMPLAINTS TO THE COUNTY TO INVESTIGATE AND ADDRESS UNDER THE COUNTY NPDES MS-4 PERMIT. COMPLAINT TO BE INVESTIGATED BY THE COUNTY.

MAY 12, 2025 by: ipford22

Created on May 07, 2025 by Mary Ford



Complainant Information

Source

Anonymous

▼

Case Information

Complaint

Environment

▼

ILLEGAL DISCHARGES COMPLAINT

▼

Summary

Discharge from demolished house being pumped into the water

Address

162509277593

3887

COTTER

DR

EDGEWATER

MD

21037

Subdivision

Subdivision

Location Details

Location Details

Received Date

🕒

05/19/2025 01:27 PM

System ID

117412

Tickler Date

🕒

05/29/2025 01:27 PM

Case ID

E-2025-1154

Completed Date

🕒

Receiver

Jackie Gholson

▼

Owner Information

JESSE

HOFFMAN

(XXX)-XXX-XXXX

HOFFMAN TAYLORE

Company Name

Email

Address

3887

COTTER

DR

EDGEWATER

MD

21037

District

7

Shannon Leadbetter

Violator Information

☐ Set Violator Same as Owner

First Name

Last Name

(XXX)-XXX-XXXX

Violator Second Name

Company Name

Address

House Number

Street Name

Street Type

City

State

Zip

Assignment Information

Date Assigned

05/19/2025 01:27 PM

Inspector

Michael McNeill (current caseload: 23)

Supervisor

Bradlee Burnham

Permit Number

Waterfront

Y

Original Case ID

Critical Area

Y

ADC Map

Cty. Council

N

Case Organization

Case Details

No evidence of pumping or discharging into body of water see attached photos.

Active Permit Application Information

Type	Permit #	Status	
------	----------	--------	--

Other Cases On This Property

Case #	Received Date	Status	Summary	
--------	---------------	--------	---------	--

Related Cases

type a case number or click to see related cases

Closed

▼

Case Timeline

First Closed on May 28, 2025 by Michael McNeill

Last updated on May 28, 2025 by Michael McNeill

Created on May 19, 2025 by Jackie Gholson



Complainant Information

Source SeeClickFix

Case Information

Complaint Environment ILLEGAL DISCHARGES COMPLAINT

Summary Fuel tank leaking into the ground

Address 174902189701

4003 CHESAPEAKE DR

EDGEWATER MD 21037

Subdivision Subdivision

Location Details Location Details

Received Date 05/20/2025 11:00 AM System ID 117420

Tickler Date 05/30/2025 11:00 AM Case ID E-2025-1159

Completed Date

Receiver Jackie Gholson

Owner Information

LEW HAGES (XXX)-XXX-XXXX

BOQUET GERARD

Company Name Email

Address 4003 CHESAPEAKE DR

EDGEWATER MD 21037

District 7 Shannon Leadbetter

Violator Information

☐ Set Violator Same as Owner

First Name Last Name (XXX)-XXX-XXXX

Violator Second Name

Company Name

Address

House Number

Street Name

Street Type

City

State

Zip

Assignment Information

Date Assigned

05/20/2025 11:00 AM

Inspector

Michael McNeill (current caseload: 23)

Supervisor

Bradlee Burnham

Warning

Please, select row

Permit Number

Waterfront

Y

Original Case ID

Critical Area

Y

ADC Map

Cty. Council

N

Case Organization

Case Details

Active Permit Application Information

Type	Permit #	Status	
------	----------	--------	--

Other Cases On This Property

Case #	Received Date	Status	Summary	
--------	---------------	--------	---------	--

Related Cases

type a case number or click to see related cases

Closed

▼

Case Timeline

First Closed on May 28, 2025 by Michael McNeill

Last updated on May 28, 2025 by Michael McNeill



Case Transferred

Forward case to Health Department.

MAY 28, 2025 by: ipmcne21

Created on May 20, 2025 by Jackie Gholson



Complainant Information

Source SeeClickFix

Case Information

Complaint Environment ILLEGAL DISCHARGES COMPLAINT

Summary Hose draining water into strom drain

Address 316516941200

1225 RIVER BAY RD

ANNAPOLIS MD 21409

Subdivision Subdivision

Location Details Location Details

Received Date 05/20/2025 01:06 PM System ID 117423

Tickler Date 05/30/2025 01:06 PM Case ID E-2025-1160

Completed Date

Receiver Jackie Gholson

Owner Information

GREGORY PASCUZZI (XXX)-XXX-XXXX

Owner, Second Name

Company Name Email

Address 1225 RIVER BAY RD

ANNAPOLIS MD 21409

District 5 Amanda Fiedler

Violator Information

☐ Set Violator Same as Owner

First Name Last Name (XXX)-XXX-XXXX

Violator Second Name

Company Name

Address

House Number

Street Name

Street Type

City

State

Zip

Assignment Information

Date Assigned

05/20/2025 01:06 PM

Inspector

Joseph Wells (current caseload: 8)

Supervisor

Bradlee Burnham

Permit Number

Waterfront

N

Original Case ID

Critical Area

Y

ADC Map

Cty. Council

N

Case Organization

Case Details

Active Permit Application Information

Type	Permit #	Status	
------	----------	--------	--

Other Cases On This Property

Case #	Received Date	Status	Summary	
--------	---------------	--------	---------	--

Related Cases

type a case number or click to see related cases

Open▼

Case Timeline

Last updated on May 20, 2025 by Jackie Gholson



CLOSE COMPLAINT

i spoke with the residents after I arrived on site, the residents were running their well off to get a positive/passing test. A garden hose was attached to the outside faucet and laid out across the front yard, and there was a slow flow of water coming out of the hose. I spoke with Brad and he told me there was no problem with what they were doing in regards to MS4 potable water parameters.

JUNE 4, 2025 by: ipwell22

Created on May 20, 2025 by Jackie Gholson



Complainant Information

Source

SeeClickFix

▼

Case Information

Complaint

Environment

▼

ILLEGAL DISCHARGES COMPLAINT

▼

Summary

Sump pump draining on to sidewalk and into street drain

Address

557916307200

22

HAMPTON

RD

LINTHICUM

MD

21090

Subdivision

Subdivision

Location Details

Location Details

Received Date

🕒

06/03/2025 10:58 AM

System ID

117520

Tickler Date

🕒

06/13/2025 10:58 AM

Case ID

E-2025-1176

Completed Date

🕒

06/03/2025 01:39 PM

Receiver

Jackie Gholson

▼

Owner Information

ALEXIS DOMINQUE

ASHCROFT

(XXX)-XXX-XXXX

Owner, Second Name

Company Name

Email

Address

22

HAMPTON

RD

LINTHICUM

MD

21090

District

1

Pete Smith

Violator Information

☒ Set Violator Same as Owner

ALEXIS DOMINQUE

ASHCROFT

240-235-7267

Violator Second Name

Company Name

Address

22

HAMPTON

RD

LINTHICUM

MD

21090

Assignment Information

Date Assigned

06/03/2025 10:58 AM

Inspector

Kyle Frederickson (current caseload: 32)

Supervisor

Bradlee Burnham

Permit Number

Waterfront

N

Original Case ID

Critical Area

N

ADC Map

Cty. Council

N

Case Organization

Case Details

Active Permit Application Information

Type	Permit #	Status	
------	----------	--------	--

Other Cases On This Property

Case #	Received Date	Status	Summary	
--------	---------------	--------	---------	--

Related Cases

type a case number or click to see related cases

Closed

Case Timeline

First Closed on Jun 03, 2025 by Jackie Gholson

Last updated on Jun 03, 2025 by Jackie Gholson



CLOSE COMPLAINT

Complaint sent to DPW

JUNE 3, 2025 by: ipghol21



Note

6/3/25: Investigated area and found sump pump discharge point right next to sidewalk. Water flows over sidewalk into curb line and then down the street to the nearest storm drain. Took pictures but was unable to load them into case manager (even after re-sizing).

JUNE 3, 2025 by: ipfred23

Created on Jun 03, 2025 by Jackie Gholson



Complainant Information

Source SeeClickFix

Case Information

Complaint Environment ILLEGAL DISCHARGES COMPLAINT

Summary Draining sewer into Magothy River

Address 314519461000

503 BROADWATER RD

ARNOLD MD 21012

Subdivision Subdivision

Location Details Location Details

Received Date 06/03/2025 11:33 AM System ID 117521

Tickler Date 06/13/2025 11:33 AM Case ID E-2025-1177

Completed Date

Receiver Jackie Gholson

Owner Information

LAURA BARBARA ROBERTS (XXX)-XXX-XXXX

ROBERTS CHARLES GILBERT

Company Name Email

Address 503 BROADWATER RD

ARNOLD MD 21012

District 5 Amanda Fiedler

Violator Information

☐ Set Violator Same as Owner

First Name Last Name (XXX)-XXX-XXXX

Violator Second Name

Company Name

Address

House Number

Street Name

Street Type

City

State

Zip

Assignment Information

Date Assigned

06/03/2025 11:33 AM

Inspector

Joseph Wells (current caseload: 8)

Supervisor

Bradlee Burnham

Permit Number

Waterfront

Y

Original Case ID

Critical Area

Y

ADC Map

Cty. Council

N

Case Organization

Case Details

Active Permit Application Information

Type	Permit #	Status	
------	----------	--------	--

Other Cases On This Property

Case #	Received Date	Status	Summary	
--------	---------------	--------	---------	--

Related Cases

type a case number or click to see related cases

Open▼

Case Timeline

Last updated on Jun 03, 2025 by Bradlee Burnham



CLOSE COMPLAINT

residents were not discharging sewage into Magothy River, there were contractors onsite installing a new sump pump and new piping along the approximate area were the original was installed.

JUNE 4, 2025 by: ipwell22

Created on Jun 03, 2025 by Jackie Gholson



Complainant Information

Source

Person

DawnHegarty443-805-5335dawnhegarty3@gmail.com

Case Information

Complaint

Environment

ILLEGAL DISCHARGES COMPLAINT

Summary

Leaking oil containers at gas station in close proximity to storm drains.

Address

369325270000

8449FT SMALLWOODRD

PASADENAMD21122

Subdivision

Subdivision

Location Details

Location Details

Received Date

🕒

06/06/2025 11:56 AM

System ID

117583

Tickler Date

🕒

06/20/2025 01:50 PM

Case ID

E-2025-1188

Completed Date

🕒

Receiver

Kyle Frederickson

Owner Information

Razi (Station Manager)Last Name(XXX)-XXX-XXXX

Owner, Second Name

SMO INCrivierabeachshell@gmail.com

Address

8449FT SMALLWOODRD

PASADENAMD21122

District

District

Council Member

Violator Information

☒ Set Violator Same as Owner

Razi (Station Manager)Last Name(XXX)-XXX-XXXX

Violator Second Name

SMO INC

Address

8449

FT SMALLWOOD

RD

PASADENA

MD

21122

Assignment Information

Date Assigned

🕒

06/10/2025 10:35 AM

Inspector

Kyle Frederickson (current caseload: 32) ▾

Supervisor

Bradlee Burnham ▾

Warning

Please, select row

Permit Number

Waterfront

▾

Original Case ID

Critical Area

▾

ADC Map

Cty. Council

▾

Case Organization

Case Details

Received email on 6/6/2025 from Dawn Hegarty (Watershed Steward and Riviera Beach community resident) about community concerns of possible hazardous material exposure due to the leaking oil containers at the gas station and their proximity to storm drains.

Active Permit Application Information

Type	Permit #	Status	
------	----------	--------	--

Other Cases On This Property

Case #	Received Date	Status	Summary	
--------	---------------	--------	---------	--

Related Cases

type a case number or click to see related cases

In Work

▼

Case Timeline

Last updated on Jun 26, 2025 by Kyle Frederickson



Note

6/26/25: Follow-up inspection. Oil absorbent is still presently spread throughout the area of leaking containers. Verified that none of the larger 55 gal drums are actively leaking. Station manager was not present, but spoke with cashier (Linda) who informed me that this was at least the second round of oil absorbent that was put down. The first round was cleaned up and properly disposed of, but they spread out some more to get as much residue up as possible. Left a voicemail and sent email to station manager to let him know the oil absorbent currently on the pavement still needs to be swept up and properly disposed. Will return next week to verify.

JUNE 26, 2025 by: ipfred23



Note

6/19/25: Received email and picture from the station manager on 6/19/25 showing that all actively leaking containers and/or drums have been removed. All small containers not owned or being used for business purposes have also been removed. Oil absorbent was spread throughout the entire area where the containers were leaking. Will return next week to confirm the oil absorbent has been cleaned up.

JUNE 26, 2025 by: ipfred23



Note

6/10/2025: Investigated area of concern. Found multiple containers of oil/automotive fluids actively leaking on the pavement. Spoke with station manager who claims they only use the larger 55 gal drums for business purposes and that all other small containers are dropped off without their knowledge. They have posted signs on the building to try and deter this behavior to no avail. They have also spoken with police previously, but since they have no camera's on that side of the building, it is hard to catch people in the act. Due to active leaking, a correction notice has been sent to: 1) Properly remove and dispose of any actively leaking containers and/or drums 2) Properly remove and dispose of all small containers that are not owned or being used by the station for business purposes 3) Once containers are removed/disposed of, apply an oil absorbent material on the asphalt to clean up any liquid/residue and properly dispose of this material. Will follow-up to confirm the required actions have been taken.

JUNE 10, 2025 by: ipfred23

Created on Jun 10, 2025 by Kyle Frederickson



Complainant Information

Source

Anonymous

Case Information

Complaint

Environment

ILLEGAL DISCHARGES COMPLAINT

Summary

Draining water from inside the house using 2 separate hoses

Address

406600191000

1208

DICUS MILL

RD

MILLERSVILLE

MD

21108

Subdivision

Aurora Hills

Location Details

Location Details

Received Date

🕒 06/20/2025 01:21 PM

 System ID

117655

Tickler Date

🕒 06/30/2025 01:21 PM

 Case ID

E-2025-1199

Completed Date

🕒

Receiver

Bradlee Burnham

Owner Information

KIM

NGUYEN

(XXX)-XXX-XXXX

Owner, Second Name

Company Name

Email

Address

1208

DICUS MILL

RD

MILLERSVILLE

MD

21108

District

5

Amanda Fiedler

Violator Information

☐ Set Violator Same as Owner

First Name

Last Name

(XXX)-XXX-XXXX

Violator Second Name

Company Name

Address

House Number

Street Name

Street Type

City

State

Zip

Assignment Information

Date Assigned

06/20/2025 01:21 PM

Inspector

Andrew Hein (current caseload: 38)

Supervisor

Bradlee Burnham

Permit Number

Waterfront

Original Case ID

Critical Area

ADC Map

Cty. Council

Case Organization

Case Details

Email from complainant:

"Hello Mr. Burnham,

...After phone conversations first with AA County Public Works and then with Zoning Administration today, I was directed to contact you concerning what I believe might be questionable activity and/or violations at my neighbor's house and to see if you had any advice or direction to send me for answers.

Here is the background...

Two weeks ago at about 11 PM, we noticed that my neighbor at 1208 Dicus Mill Road had a hose originating from somewhere inside his house discharging water full-force onto his front driveway and running into the gutter and storm drain. Both the front door and side door were wide open and the lights inside the house were off. My adult son had come home late and after he noticed the situation next door, he called the police because he feared something had happened to the resident(s). When the police arrived, they stood outside the neighbor's front door and yelled for someone to come out. After a few minutes a man came to the door and said something about "Sump". At that point the police just said "Ok" and left.

Since that time, we have noticed that the hose is still being put out and water is still being discharged full force into the front yard and into the storm drain. We have also noticed that there is a second hose into the back yard. The hose in the front yard is usually out only overnight and in the early morning the hose is taken back, put out of sight and no longer visible. Some evenings it is put back outside around dinnertime and stays on, I can only assume, all night. Since so much water is being discharged and this neighborhood is on well water, we are concerned about what might be happening to the aquifer. This has been happening daily for over two weeks. I don't know if there is anything illegal going on at the residence, but my main concern is the possible demise of my well water.

...

My main concern is the amount of water being discharged and what might be ending up in the storm drain, and ultimately affecting the ground water in this area. The community, Aurora Hills, which the neighbor's house would be part of, does not have a functioning HOA, so I do not have that avenue to turn to.

Active Permit Application Information

Type	Permit #	Status	
Error: cannot connect to open permits			

Other Cases On This Property

Case #	Received Date	Status	Summary	
Z-2021-520	5/25/2021	Closed		
B-2016-235	4/12/2016	Closed	INTERIOR RENOVATIONS	

Related Cases

type a case number or click to see related cases

Open

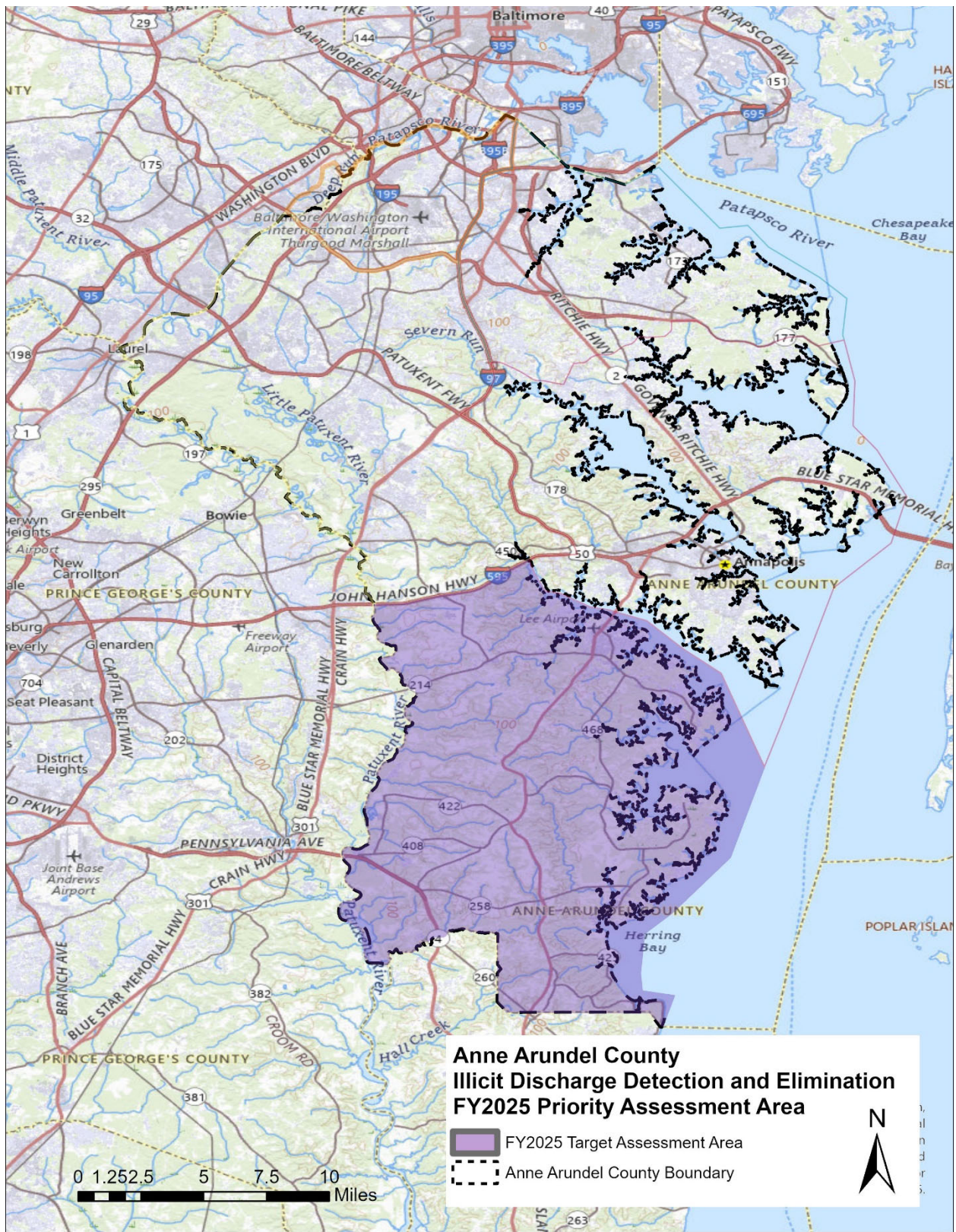
▼

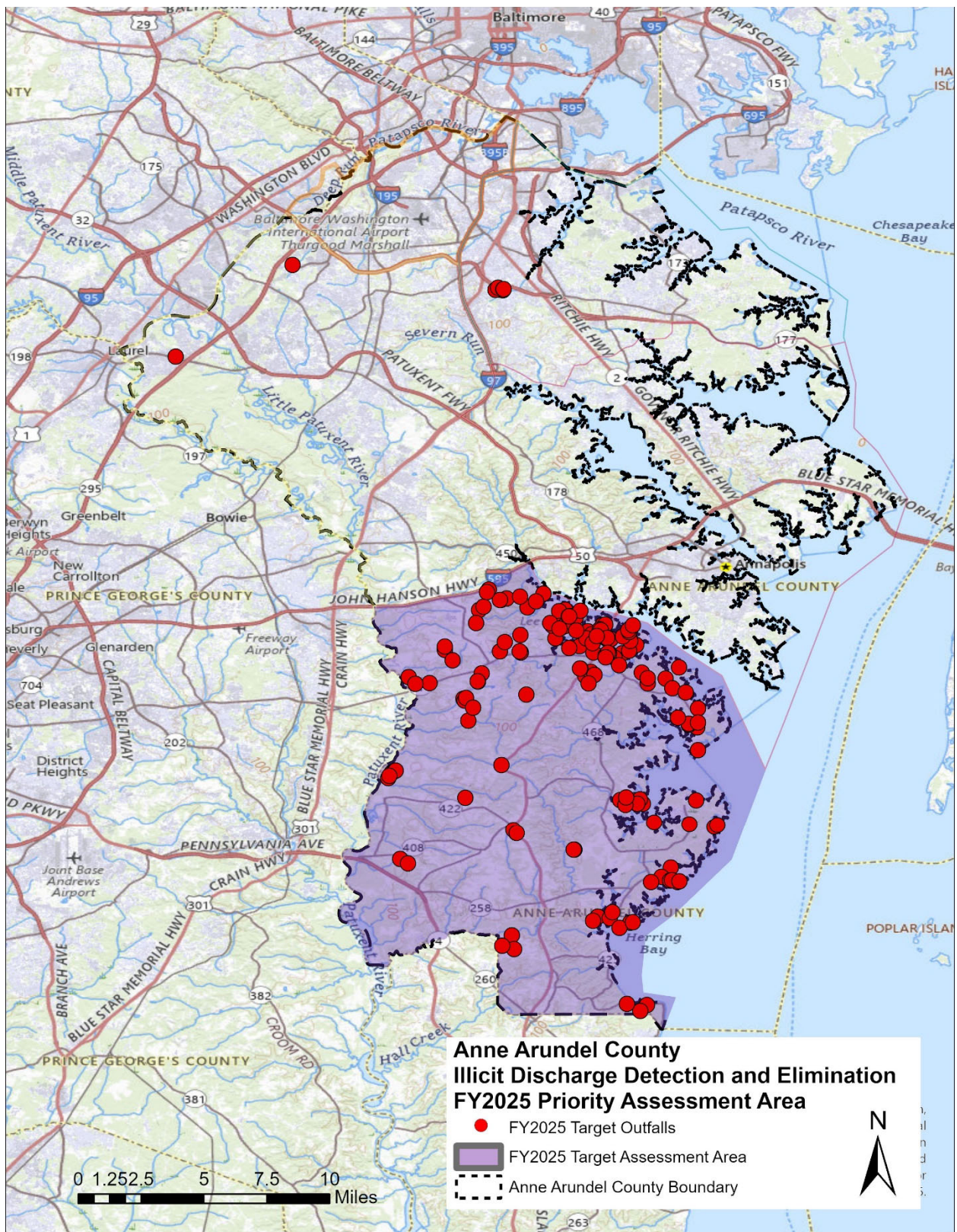
Case Timeline +

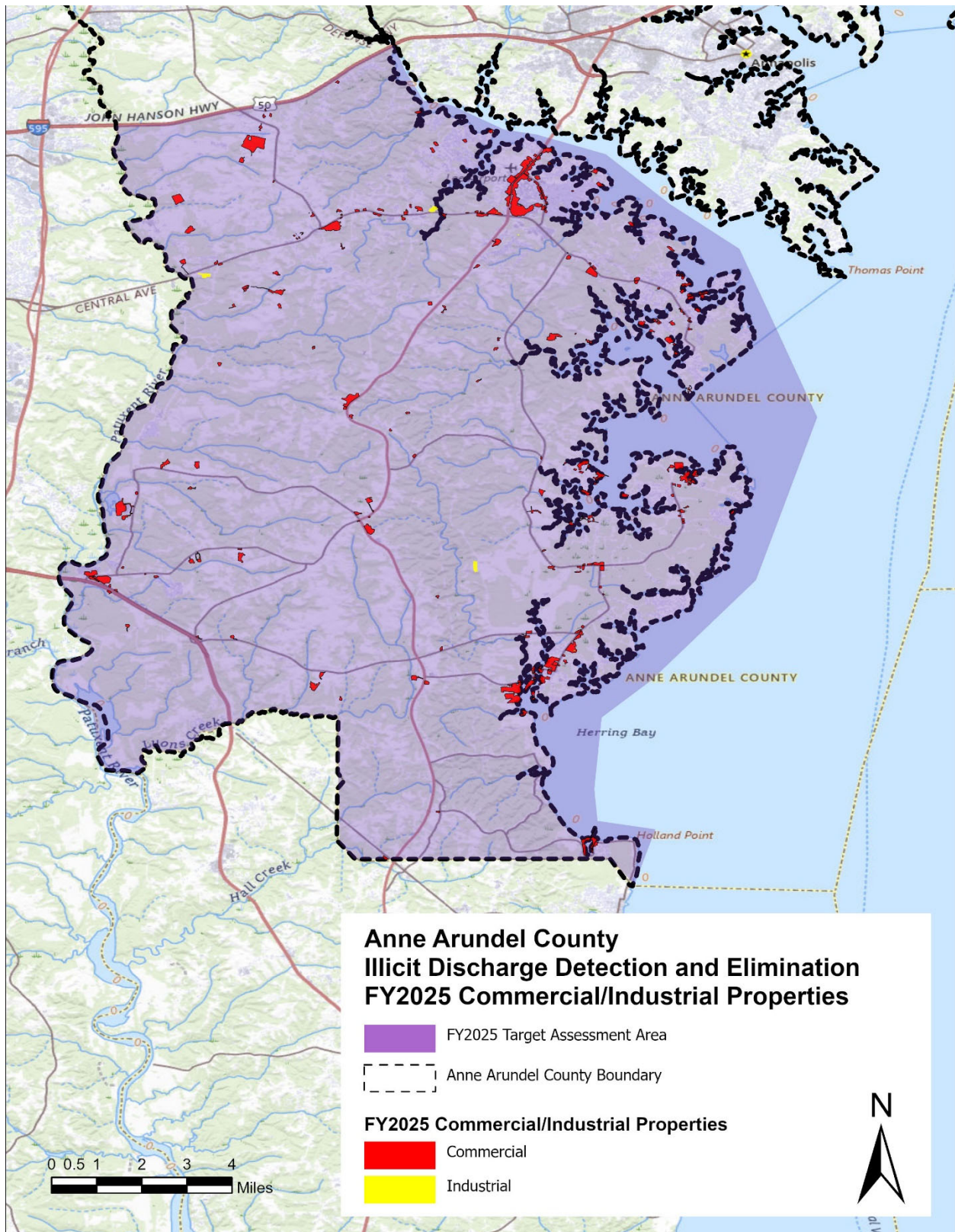
Last updated on Jun 20, 2025 by Bradlee Burnham

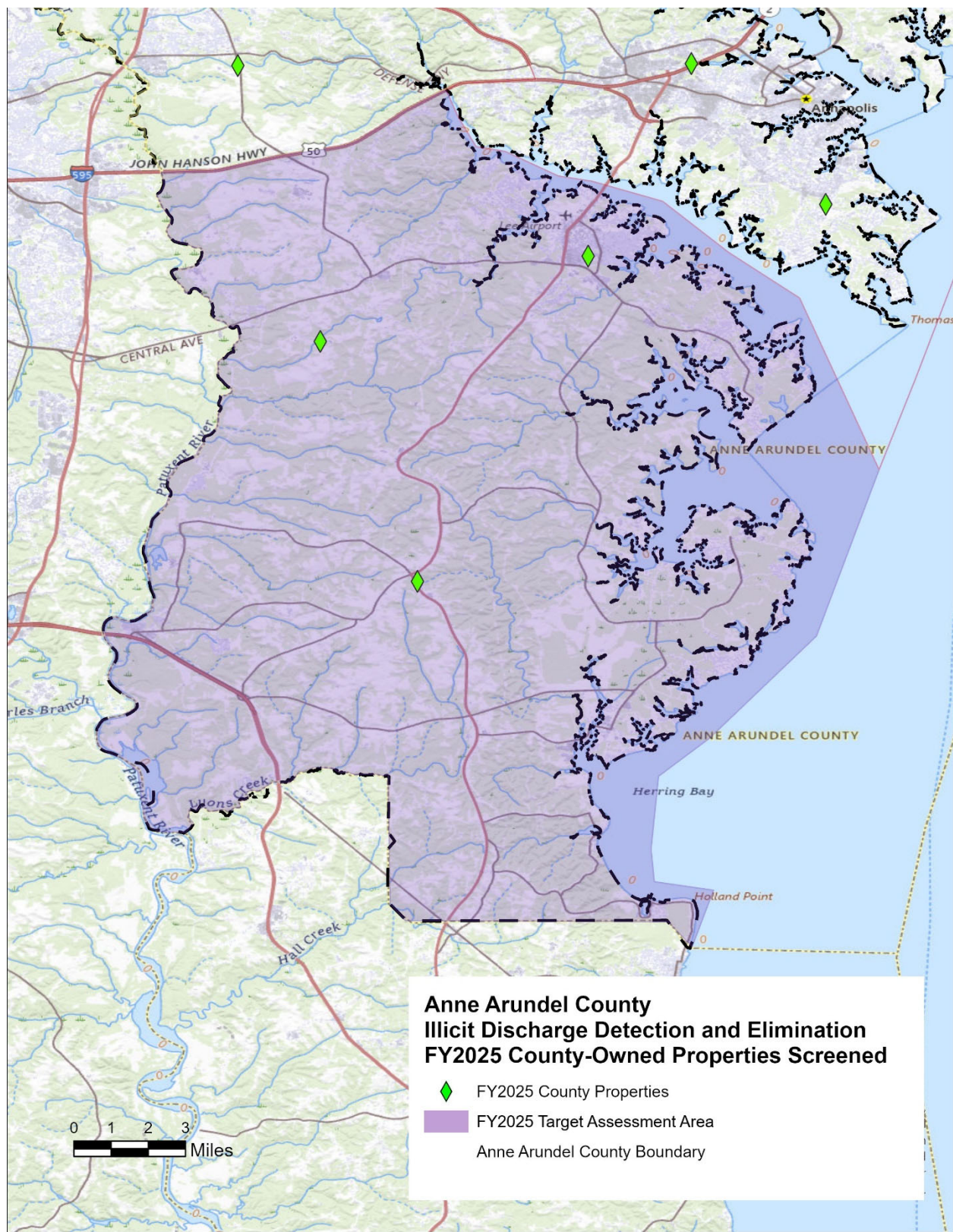
Created on Jun 20, 2025 by Bradlee Burnham

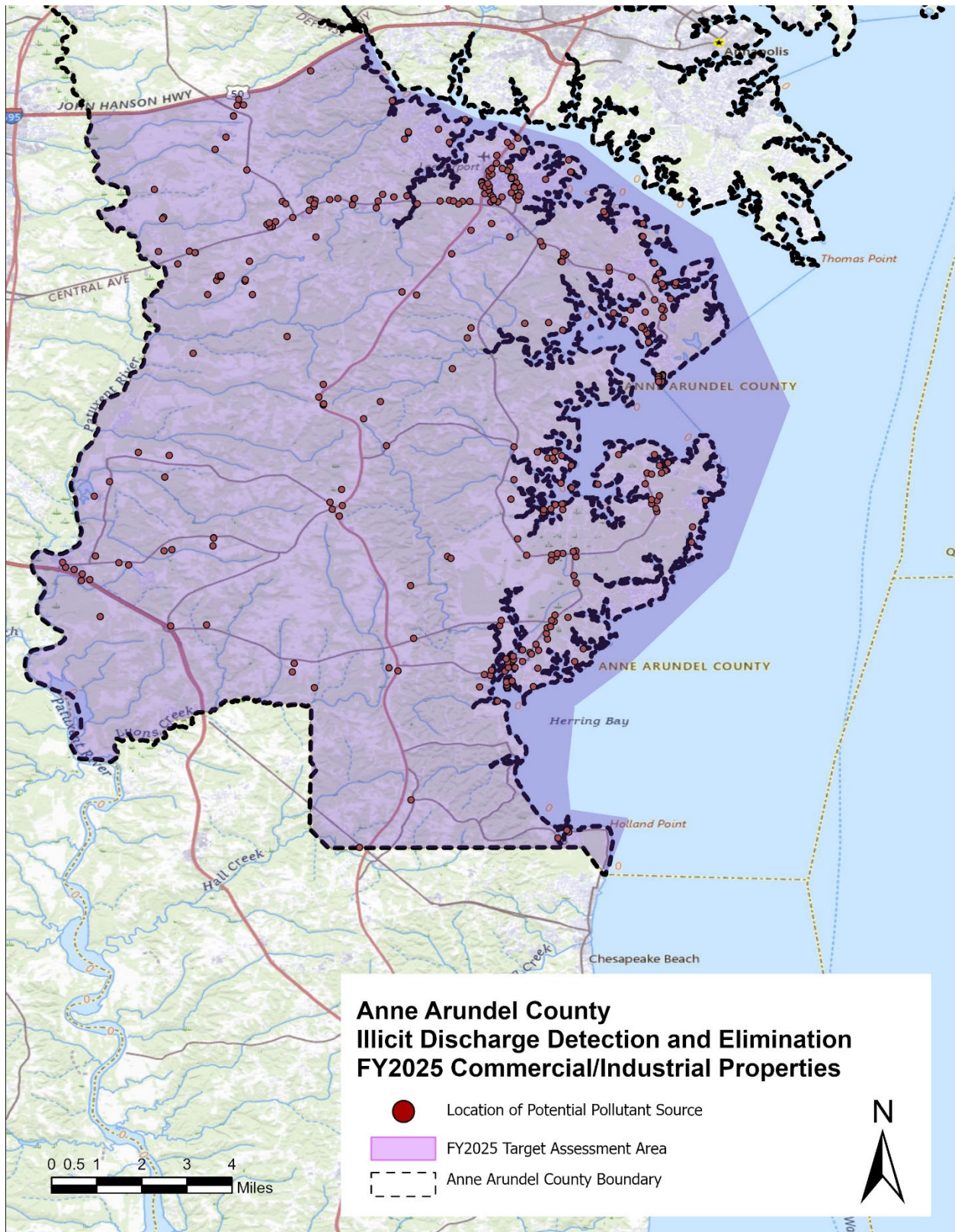
APPENDIX E | IDDE PROGRAM MAPS











APPENDIX F | MDE ADMINISTRATIVE PENTALTIES