

Anne Arundel County
Office of Transportation

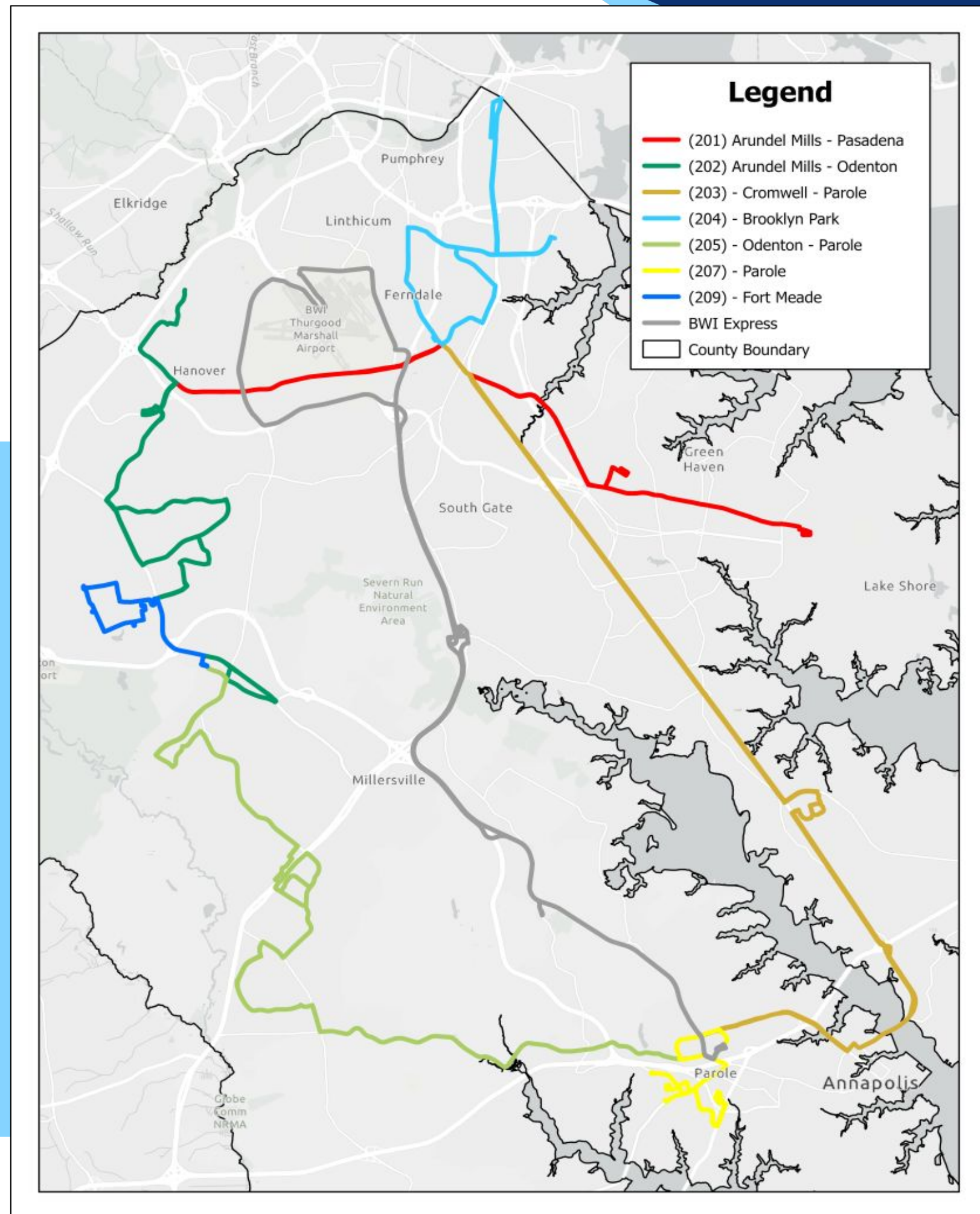
TRANSIT SERVICES

Routes, Apps, On-Demand, Paratransit
Understanding Public Transportation



ANNE ARUNDEL COUNTY

The Office of Transportation provides fare-free transit. Our network of fixed route and on demand services enhances both the quality of life and ease of movement for residents and visitors.

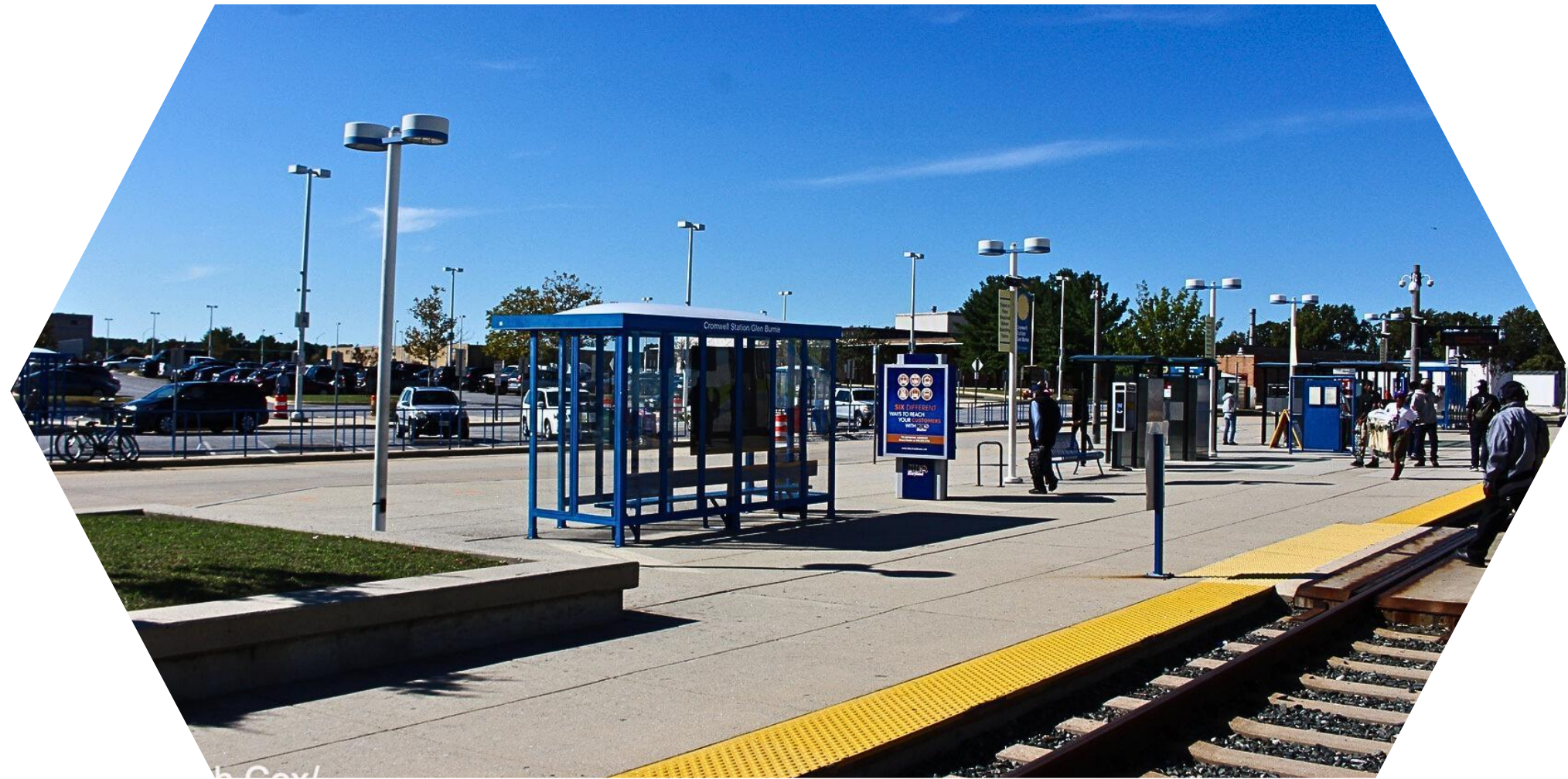


We operate three types of public transit in the county.

- **Eight (8) traditional fixed-routes.**
- **Two (2) on-demand zones in north and south county.**
- **County-wide paratransit service.**

In addition, our fixed-route and on-demand services can be accessed via several apps.

TYPES OF TRANSIT SERVICES



Routes

Apps

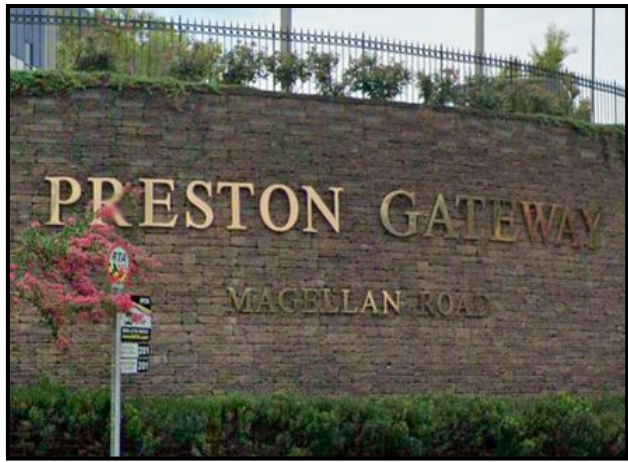
On-Demand

Para-transit

»»» FIXED ROUTE SERVICES

- 201 - Arundel Mills - Pasadena
- 202 - Arundel Mills - Odenton
- 203 - Glen Burnie - Parole
- 204 - Brooklyn Park
- 205 - Odenton - Parole
- 207 - Parole
- 209 - Ft. Meade
- BWI Express





2. Magellan Circle

4. Heritage at Freetown



201

Arundel Mills - Pasadena

Monday - Friday 6 AM - 12 AM

Saturday - Sunday 7 AM - 12 AM



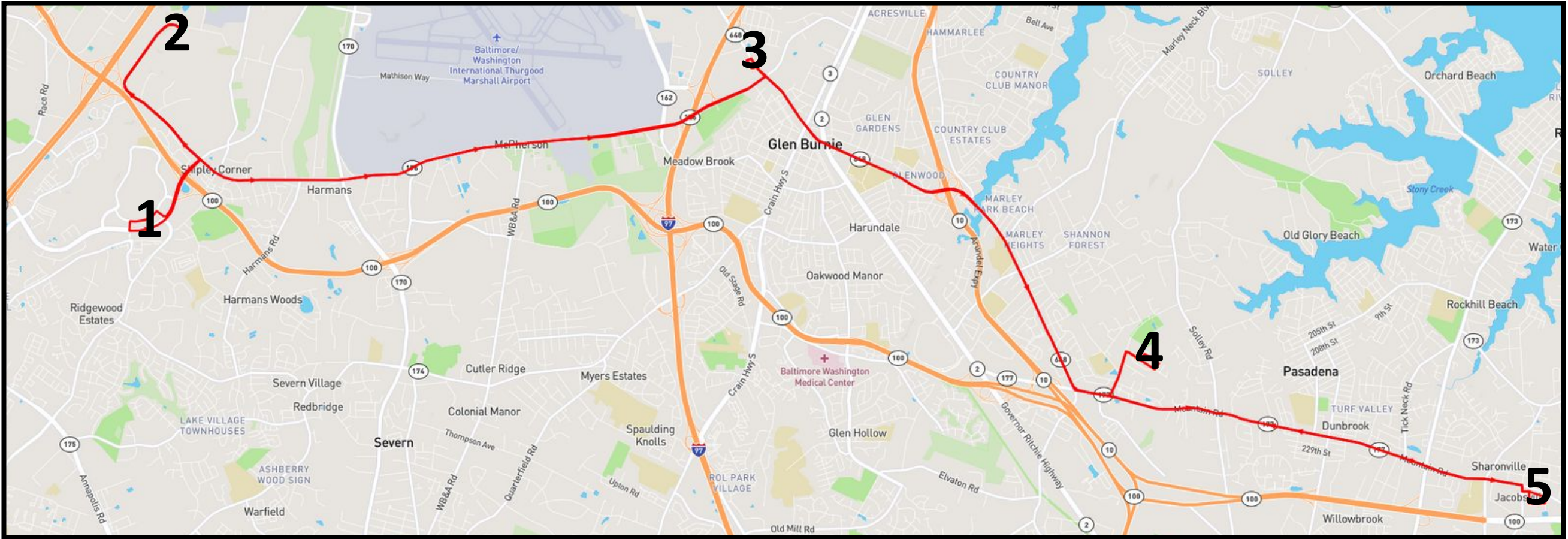
3. Glen Burnie Light Rail Station



5. Lakeshore Plaza



1. Arundel Mills Mall



201

Arundel Mills - Pasadena

Monday - Friday	6 AM - 12 AM
Saturday - Sunday	7 AM - 12 AM





1. Preston Gateway Industrial Park



2. Arundel Mills Mall



3. Severn Residential Communities

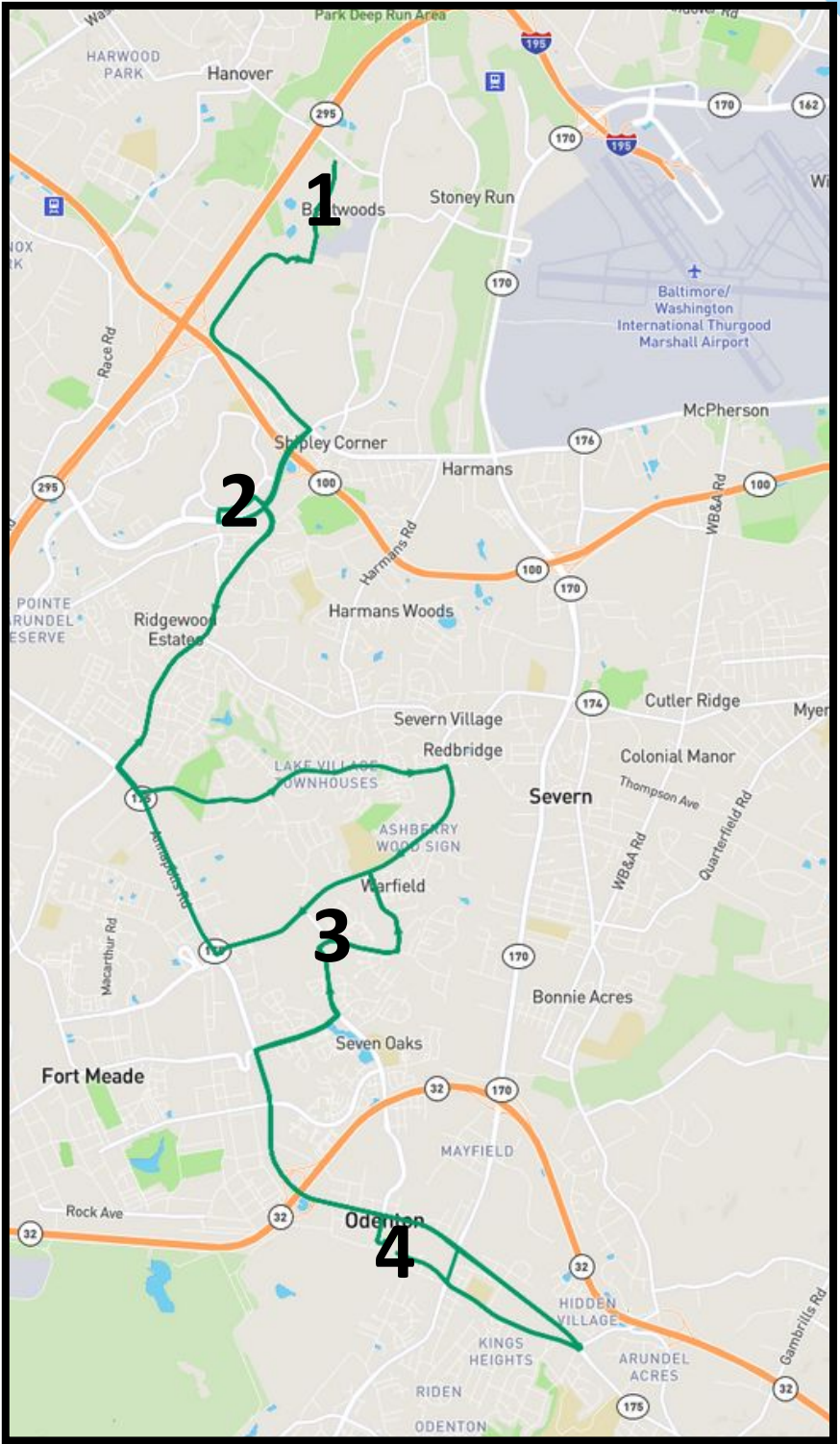


4. Odenton MARC Station



202
Arundel Mills-
Odenton

Monday Sunday 6AM 12AM





**1. Glen Burnie
Light Rail Station**



2. Downtown Glen Burnie



**3. Marley Station
Mall**



4. Severna Park



**5. Anne Arundel
Community College**



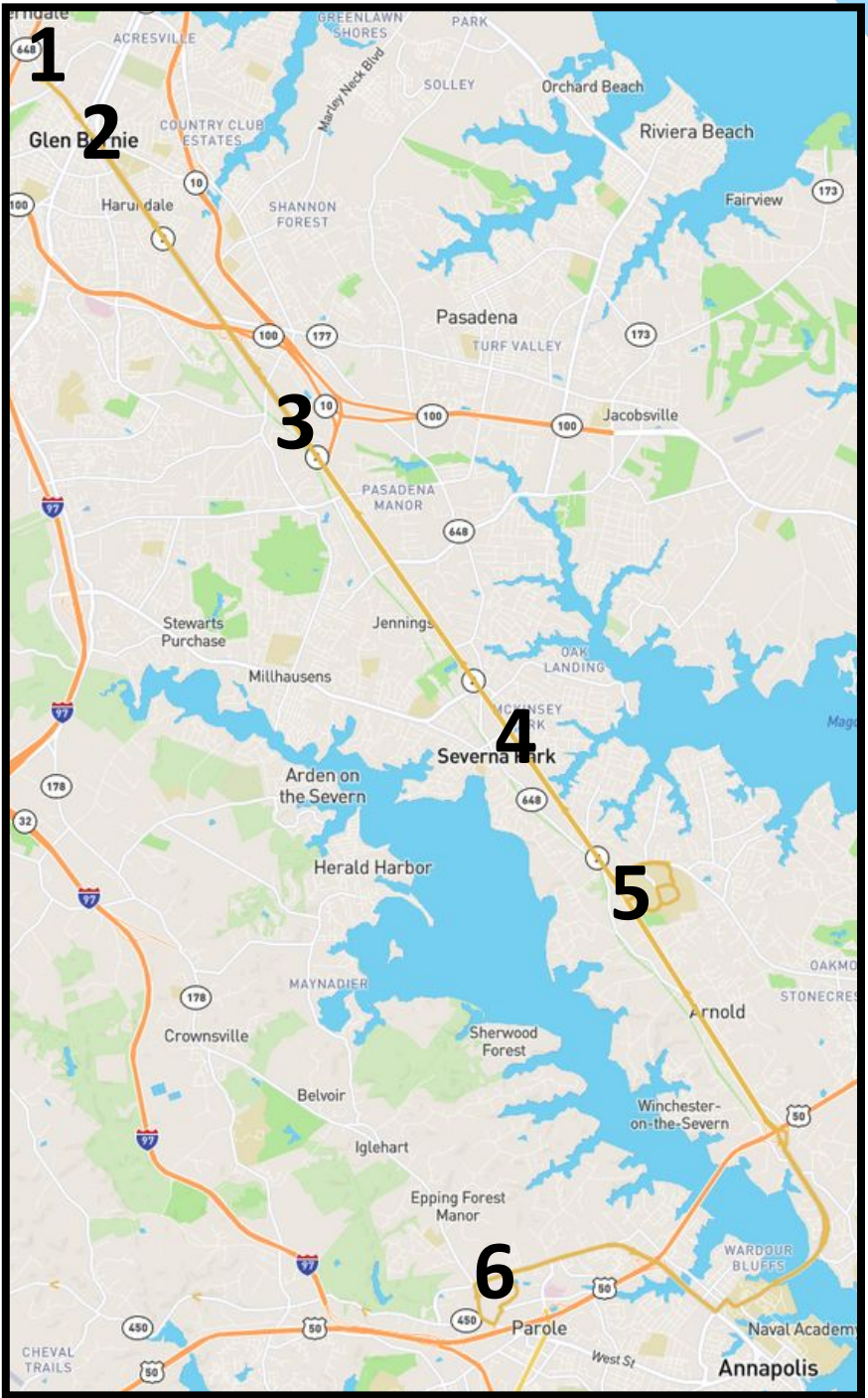
**6. Westfield
Annapolis Mall**

203

Glen Burnie - Parole

Daily

6AM - 10 PM



Brooklyn Park

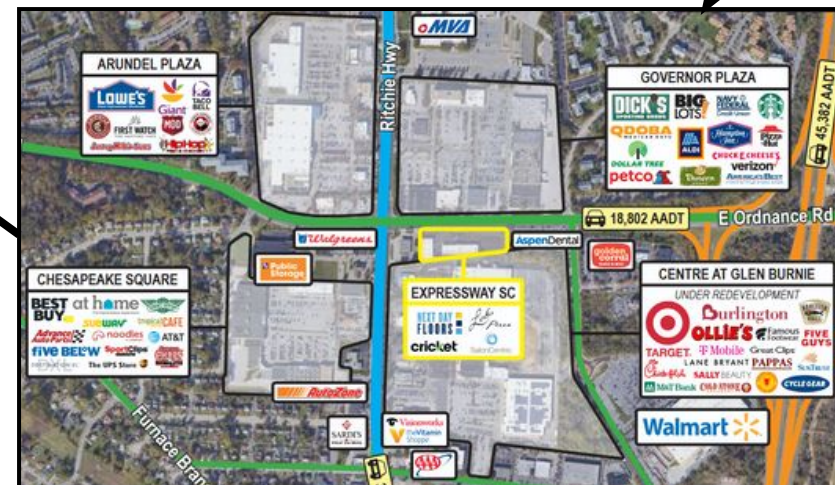
Monday - Saturday 6AM - 6PM



3. Brooklyn Park



2. Correctional Center & Sports Complex



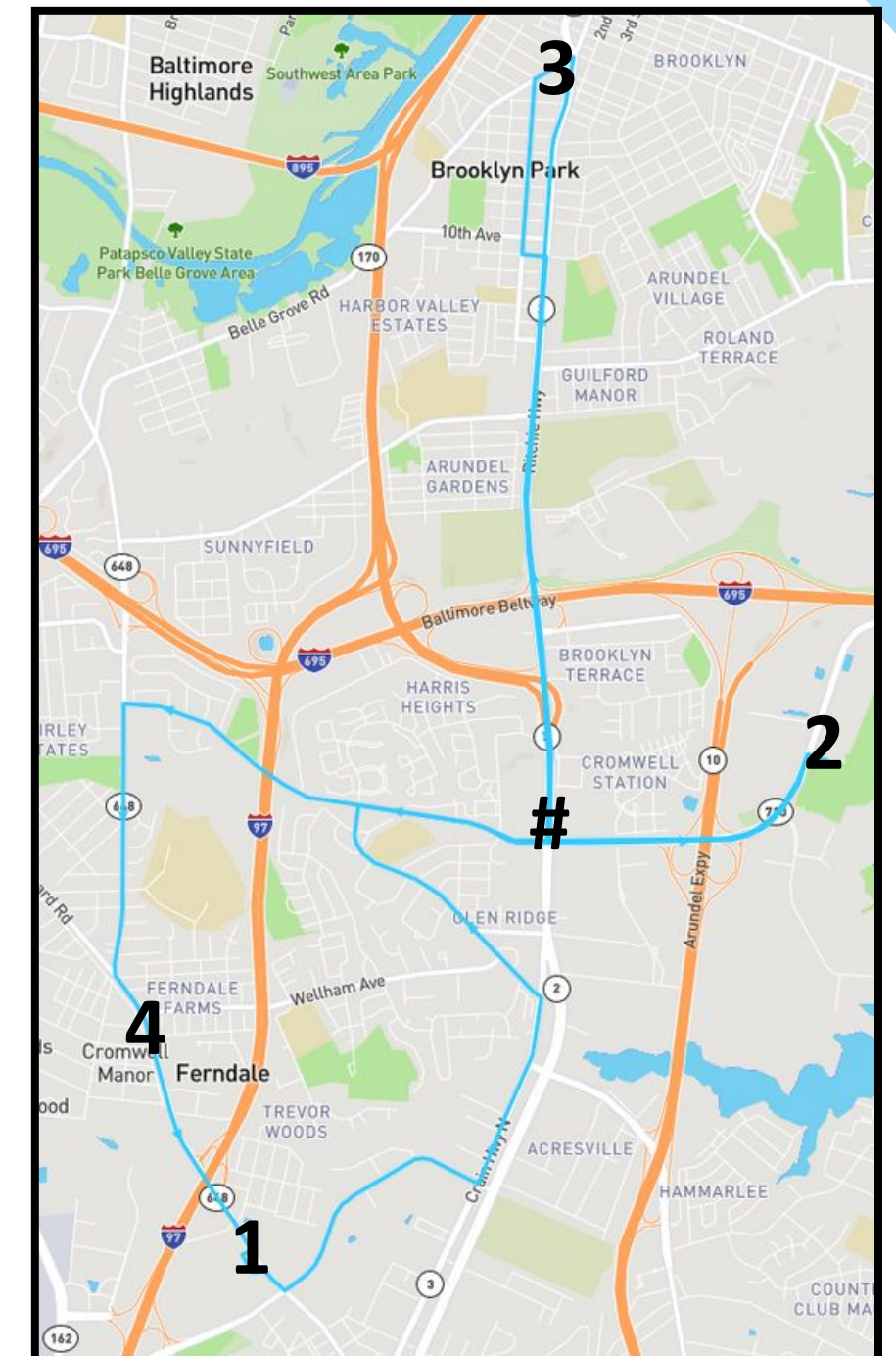
Glen Burnie Shopping Complex

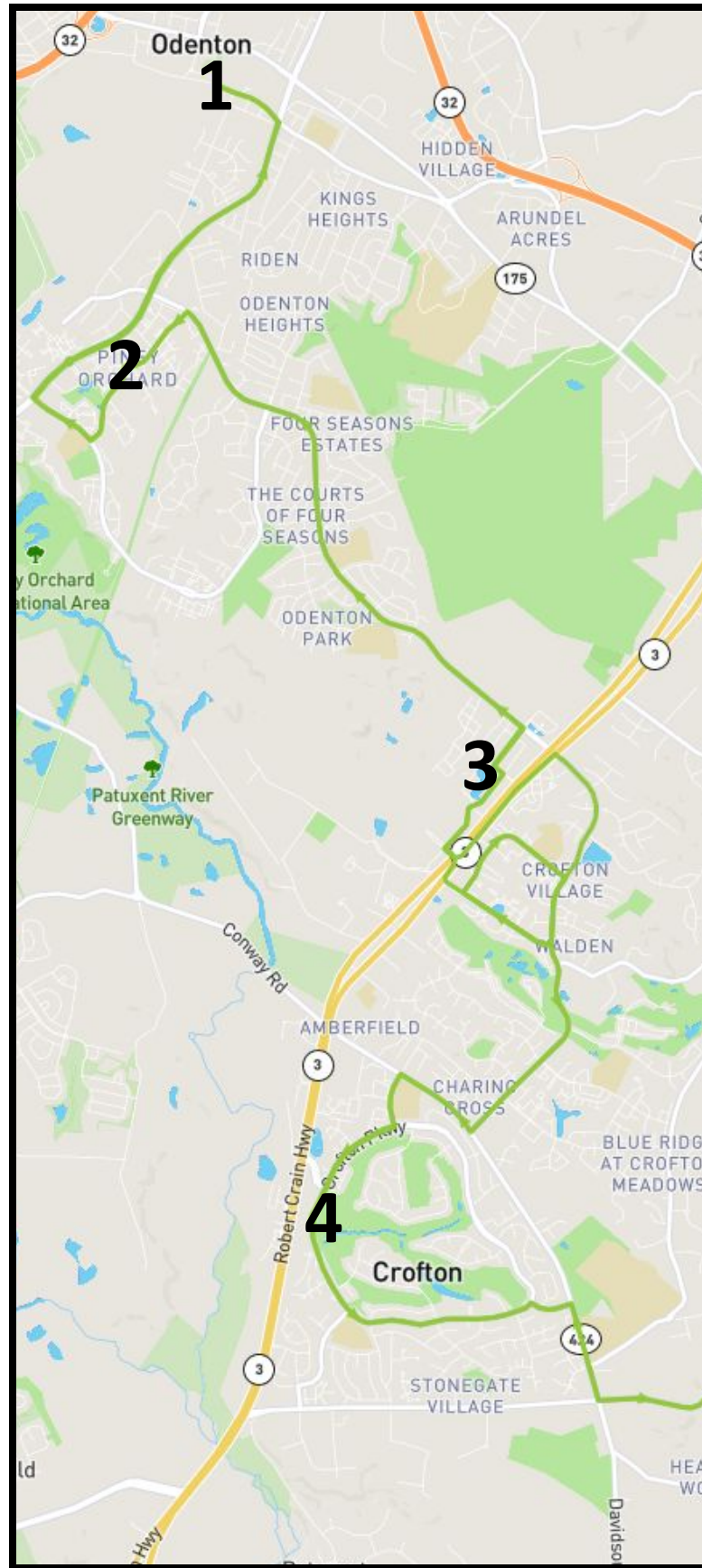


4. Ferndale Light Rail Station



1. Glen Burnie Light Rail Station





**1. Odenton
MARC Station**



**2. Piney Orchard
Marketplace**



**3. Village at
Waugh Chapel**



**4. Crofton
Country Club**



**5. Westfield
Annapolis Mall**

205

Odenton -
Parole

Monday - Friday

6 AM - 7 PM

207

Parole

Monday - Friday

6 AM - 6 PM

Saturday

8 AM - 5 PM



**2. Harry S Truman
Park and Ride**



**3. Heritage
Office Complex**



**4. Annapolis
Harbour Center**

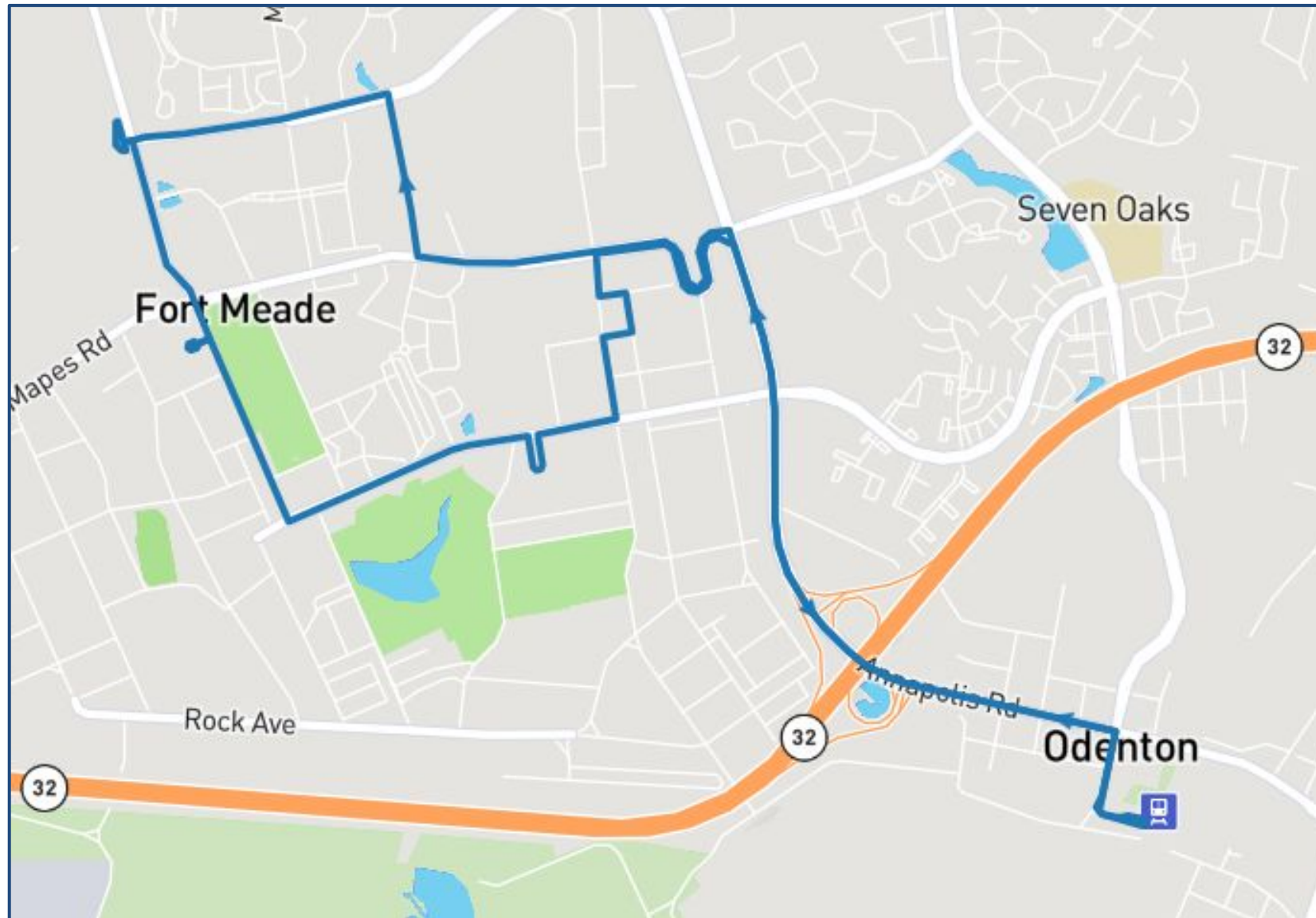


**1. Westfield
Annapolis Mall**



**5. Anne Arundel
Medical Center**





Passio GO!

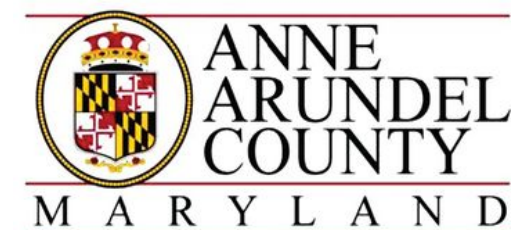
The **Passio GO!** app allows riders to see bus locations in real-time, along with passenger capacity and estimated time of arrival. The app is free to download on all Android and iOS devices.

Transit (App)

Similar to Passio, the **Transit** app allows riders to view real-time bus locations and ETAs. However, it also integrates with other transit systems, including Light Rail, MARC, WMATA, and MTA, making it ideal for riders who transfer between systems. The app is free to download on Android and iOS devices.

Anne Arundel Transit Services

Scan the QR code to visit our website and get access to all the latest transportation-related news and resources for Anne Arundel County.



Office of Transportation

2664 Riva Road (3rd Floor), Annapolis, MD 21401

Telephone: **410-222-7440** Fax: **410-222-4092**

Email: transportation@aacounty.org

209

Fort Meade

Monday - Friday

6:15 AM - 6 PM

- Odenton MARC
- DISA
- Candlewood Suites
- Theatre
- Kimbrough Hospital
- Office of Personnel

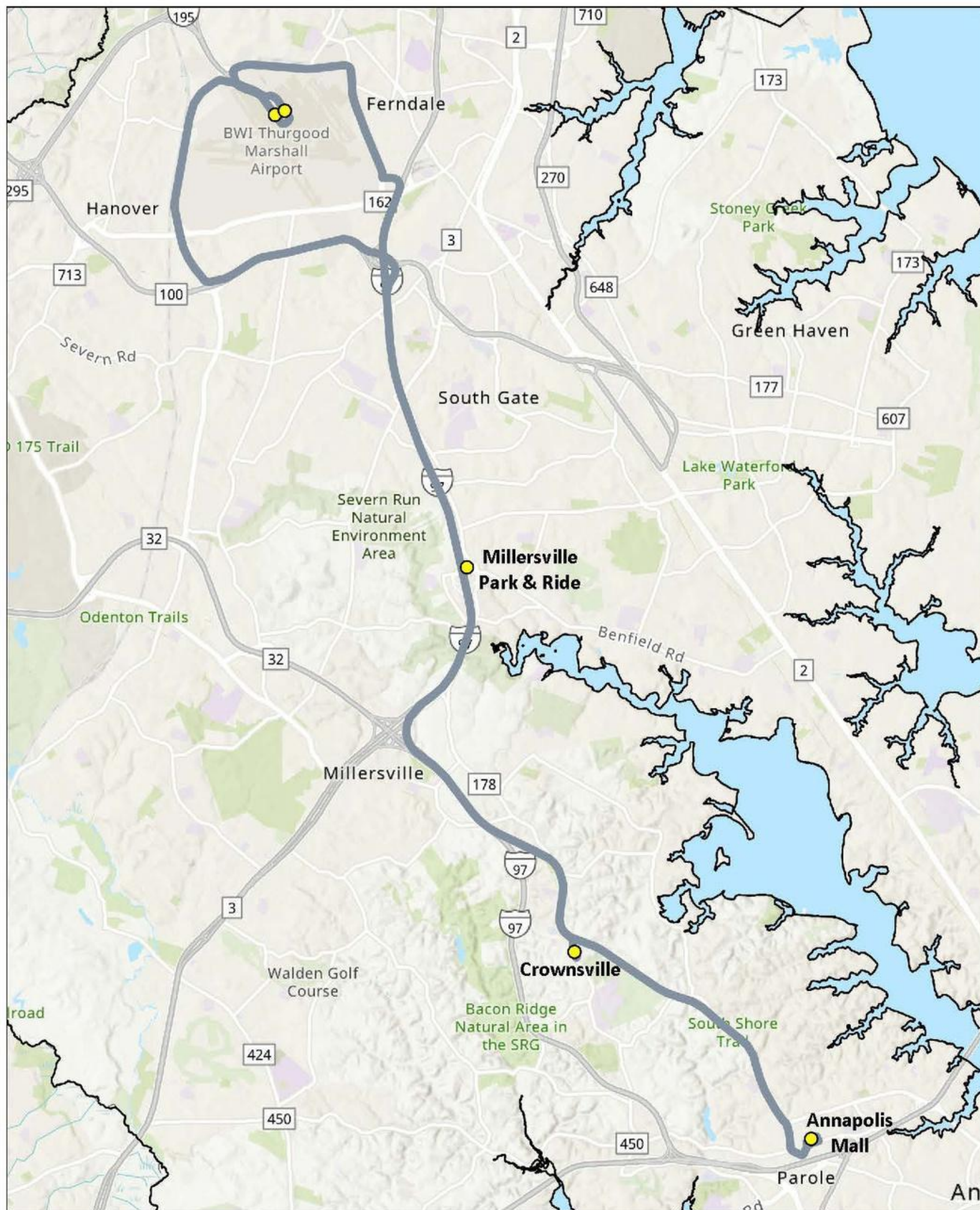
All buses are accessible
TTY MD Relay or 7-1-1



RIDE
FREE



FREE
WiFi



Passio GO!

The **Passio GO!** app allows riders to see bus locations in real-time, along with passenger capacity and estimated time of arrival. The app is free to download on all Android and iOS devices.

Transit (App)

Similar to Passio, the **Transit** app allows riders to view real-time bus locations and ETAs. However, it also integrates with other transit systems, including Light Rail, MARC, WMATA, and MTA, making it ideal for riders who transfer between systems. The app is free to download on Android and iOS devices.

Anne Arundel Transit Services

Scan the QR code to visit our website and get access to all the latest transportation-related news and resources for Anne Arundel County.



2664 Riva Road (3rd Floor), Annapolis, MD 21401
 Telephone: **410-222-7440** Fax: **410-222-4092**
 Email: transportation@aacounty.org

BWI

EXPRESS

BWI Airport

Daily

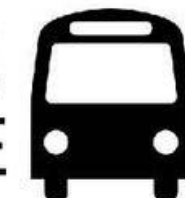
5 AM - 10 PM

- Annapolis Mall
- Crownsville
- Millersville Park & Ride
- BWI Southwest Terminal
- BWI International Terminal

All buses are accessible
 TTY MD Relay or 7-1-1

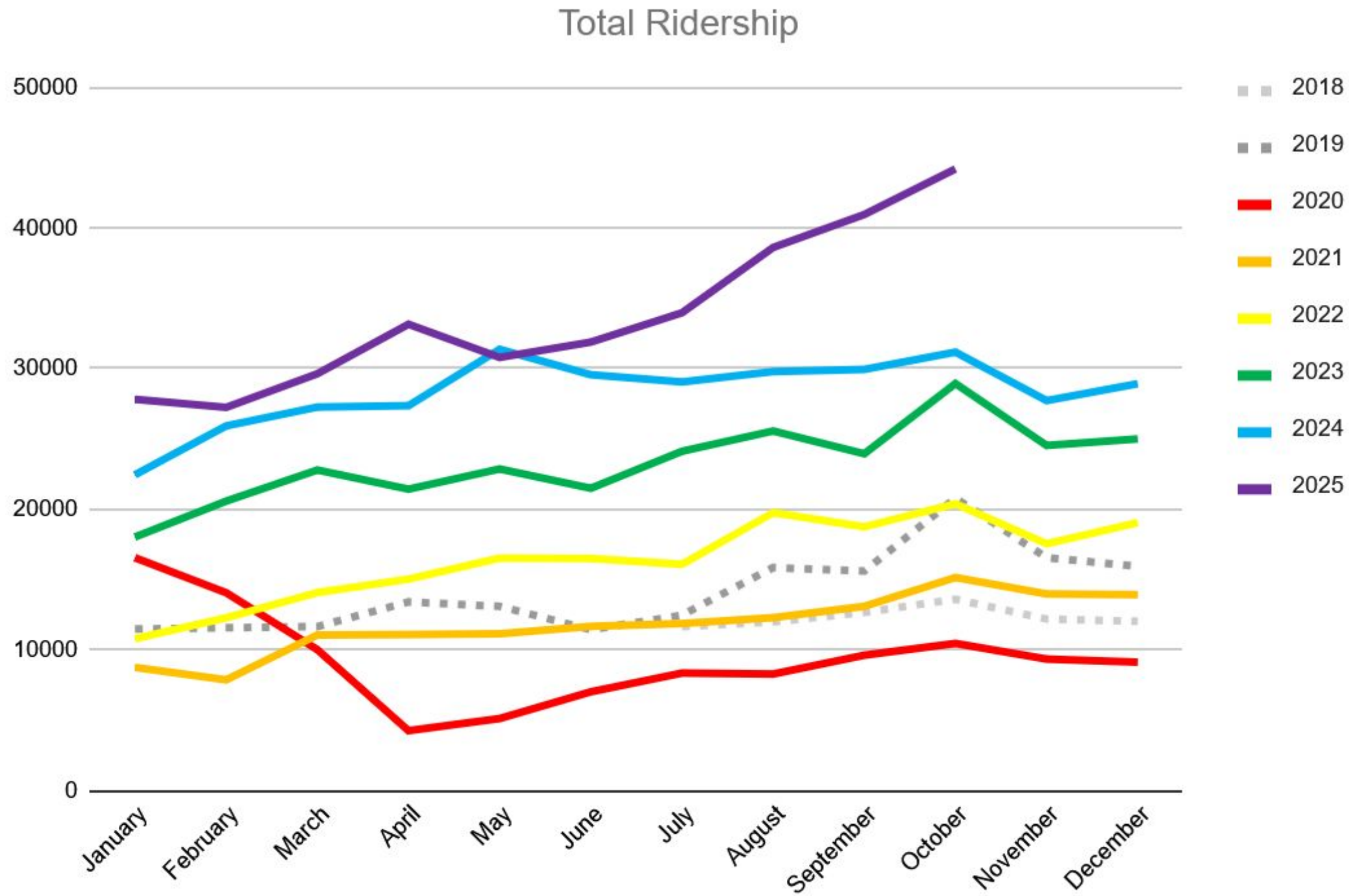


RIDE
FREE



FREE
Wi-Fi

Ridership Growth



- AACO assumes operations July 2018
- Moderate growth through 2019, then steep Covid decline
- Ridership recovers end of 2022
- Steady growth through 2024
- Accelerated growth in 2025!



ON-DEMAND SERVICES

NORTH & SOUTH COUNTY CALL N' RIDE

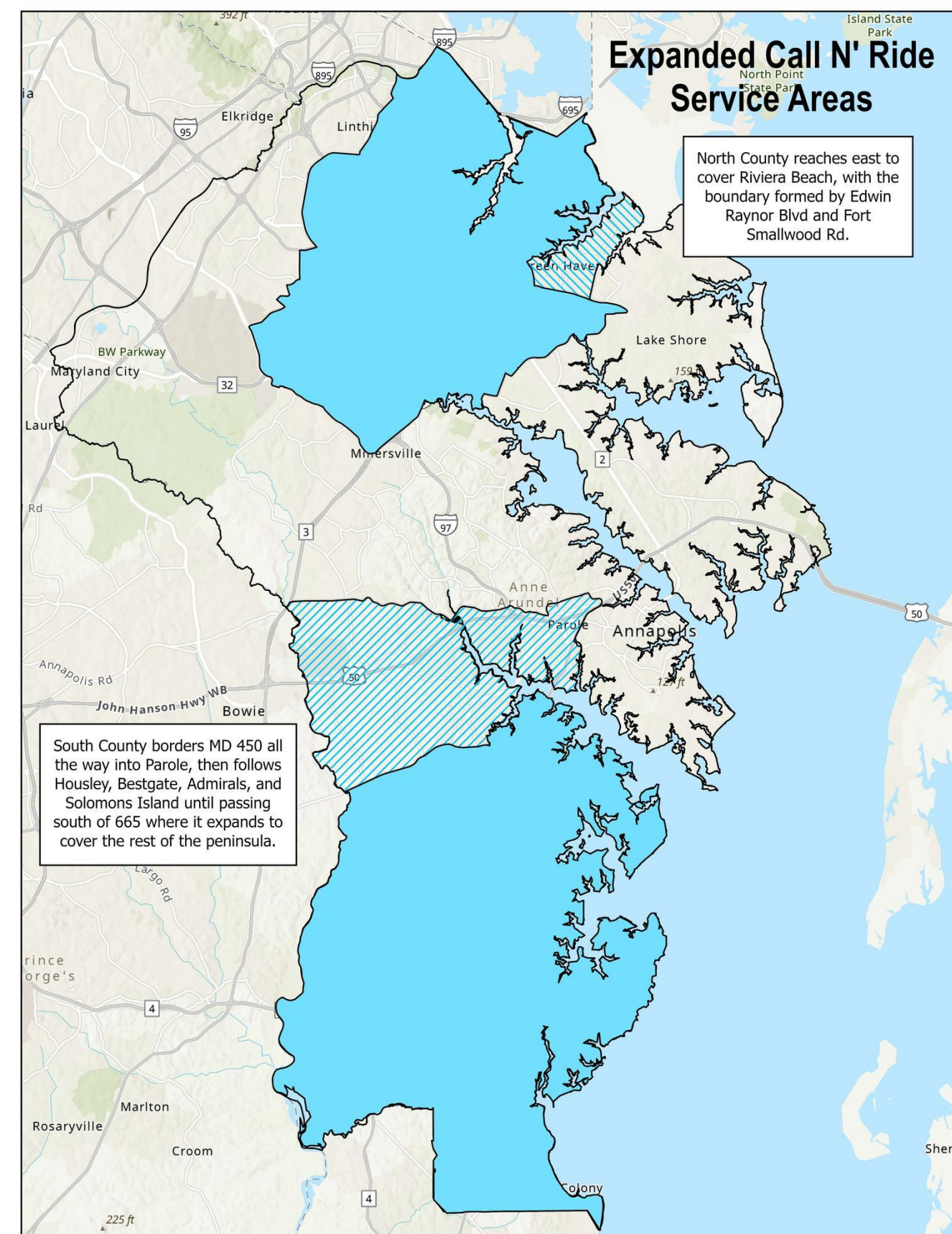
Anne Arundel County Call N' Ride Services

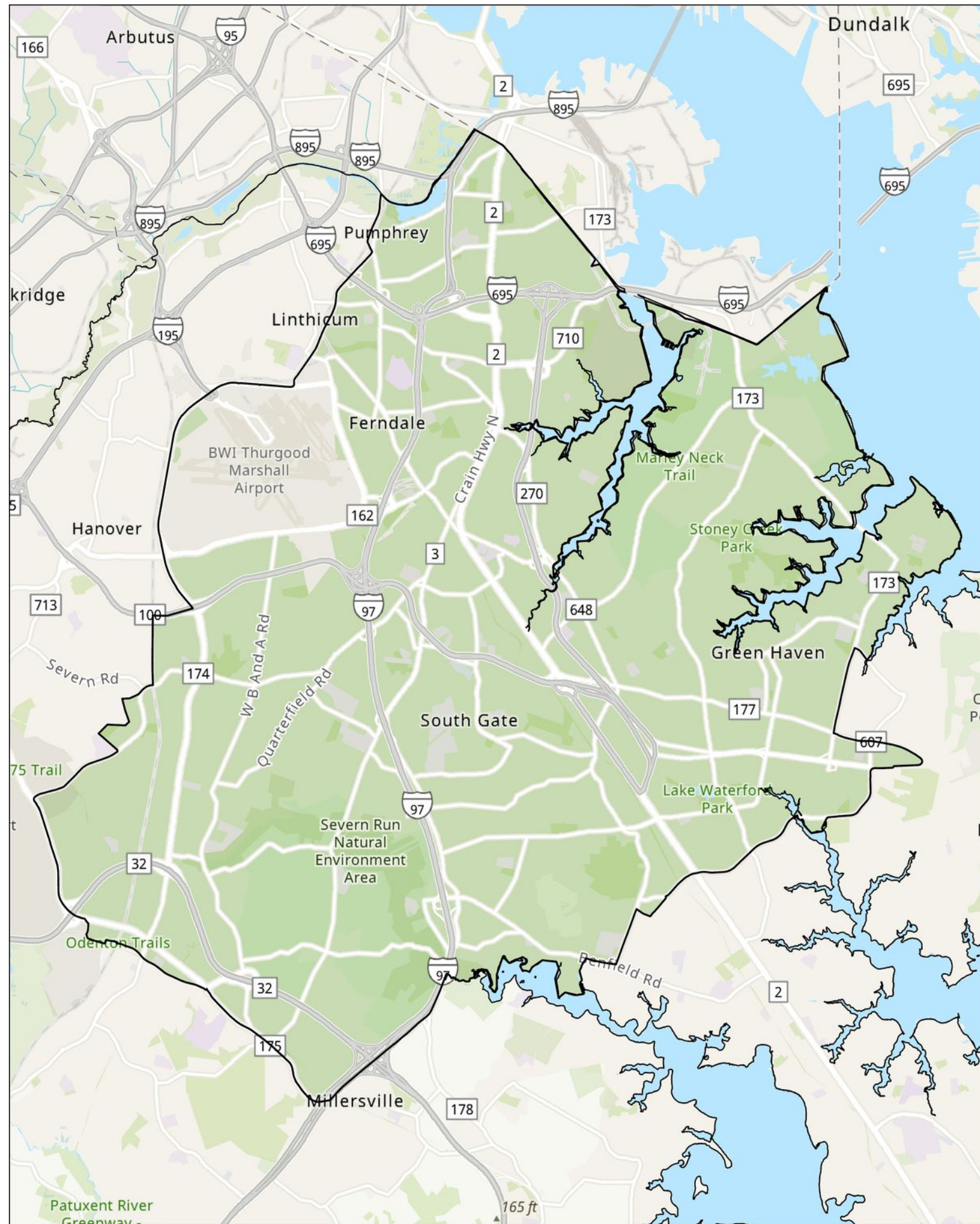
Convenience at Your Fingertips** Requesting a ride has never been easier! Simply call or use your smartphone to access our services.

Available in two distinct regions: North County and South County.

****Operating Hours****

- Daily from 7 AM to 7 PM.
- South County operates Monday through Friday.
- North County operates Monday through Saturday.



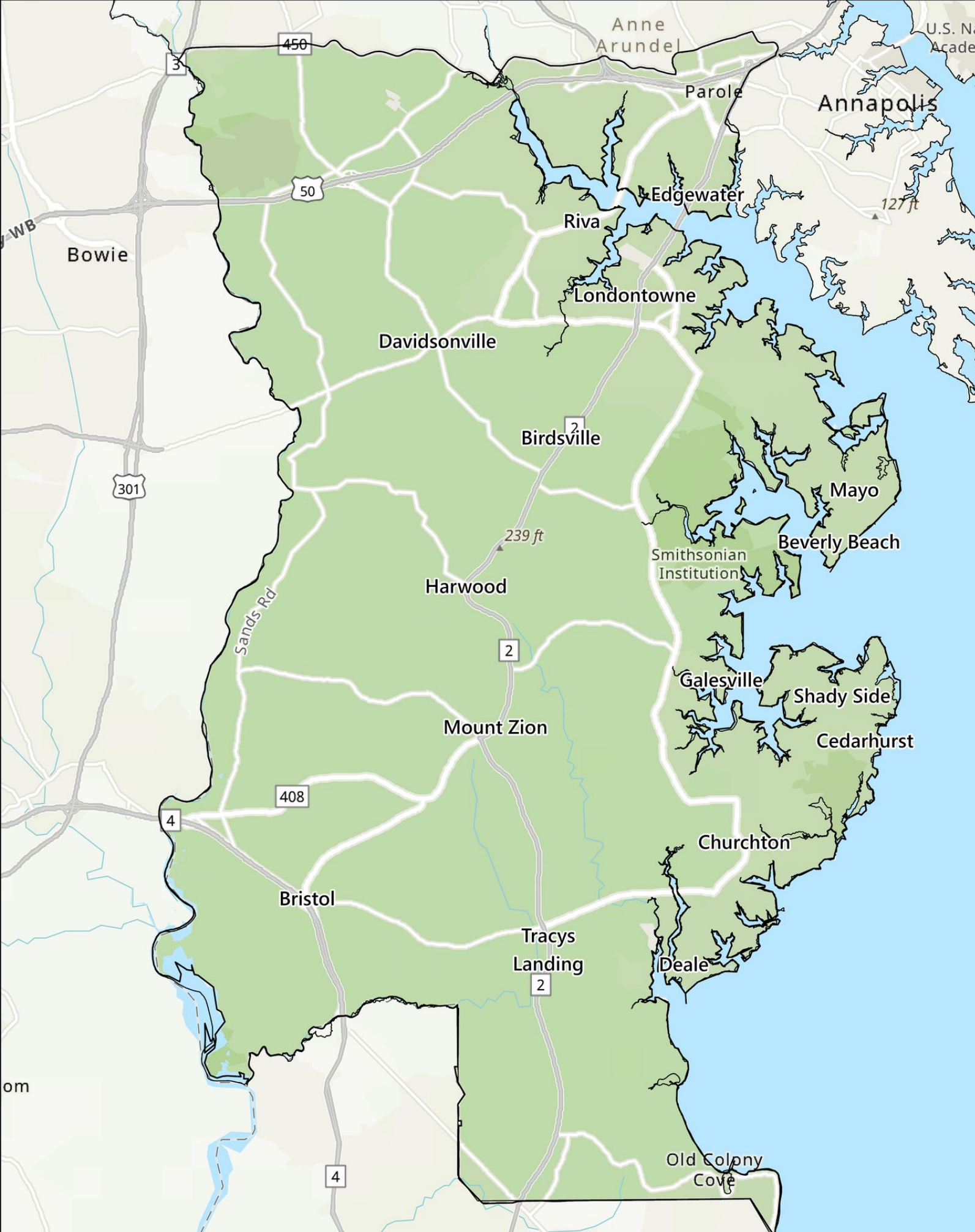


NORTH COUNTY CALL N' RIDE SERVICE

On-Demand services operates

***7am - 7pm**

***Monday - Saturday**



SOUTH COUNTY CALL N' RIDE SERVICE

On-Demand services operates

***7am - 7pm**

***Monday - Friday**



HOW TO RIDE

- 1. Call (410) 222-0025 - at least two (2) hours in advance for your desired trip. For pick-ups before 9 a.m., call between 5 p.m. and 7 p.m. the previous business day to schedule.**
- 2. Schedule your pick up time - by providing scheduler with exact pickup address and desired time. If no one answers, please leave your name, address and phone number. The scheduler will return your call with your scheduled pick-up time and location.**
- 3. Passengers can schedule your return - trip at the same time, or you may call back 2 hours before your desired return trip.**
- 4. Pick up times - are estimated and may change due to unexpected traffic delays.**

PARA-TRANSIT SERVICES

Eligibility requirements are:

- 18 and older with a disability;
(Acceptable Documentation and/or
SSI award letter)
- 55 and older
- Resident of Anne Arundel County.

410-222-0022



AAC Aging & Disabilities

ETA program

ETA Rides-On-Demand Program

The new Easy Travel Access Rides-On-Demand provides transportation services to qualified applicants. To use this service after enrollment, simply call the Rides-On-Demand reservations number to schedule a ride. With Rides-On-Demand, same-day service is available with at least two-hours notice. An appropriately equipped car, van, or SUV operated by a professional driver will pick you up at your desired location and deliver you directly to your destination with ease and can also provide you with door-to-door service within Anne Arundel County and 20 miles outside the county line (excludes trips to the airport). With ETA Rides-On-Demand, the department offers fares at approximately 50% of the normal cost.

How to Apply for ETA?

To apply, you may visit us at one of our 2 locations listed below or mail your order form and other documents to 2666 Riva Rd, Suite 400, Annapolis, MD 21401.

- 2666 Riva Road, 2nd Floor, Annapolis, MD 21401 (Walk-in hours 8:00 a.m. to 3:30 p.m.)
- 7320 Ritchie Highway, Glen Burnie, MD 21061 (Walk-in hours 8:00 a.m. to 3:30 p.m.)



TRANSIT APPS

Pingo

What is Pingo?

Ride Pingo is an app that gives you the power to book an on-demand bus within the service area.

Using the Ride Pingo app, you can book your ride quickly, easily and at any time that suits you and even track the progress of your bus.

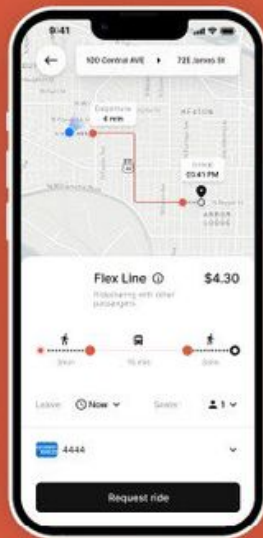
Pingo allows you to access more transit options in your city.

Using the Ride Pingo app, you can book your ride quickly, easily and at any time that suits you and even track the progress of your bus.



Get started

- 1 Get the app
Something goes here with some short instructions
- 2 Open the app
Something goes here with some short instructions
- 3 Verify + go!
Something goes here with some short instructions



Request a ride to your location via the app.
With some more instructions here



ridepingo.com

PassioGo

TRACK YOUR BUS IN REAL TIME

Use the Passio GO app!



SCAN ME



Transit Royale



IS UPGRADING YOU TO

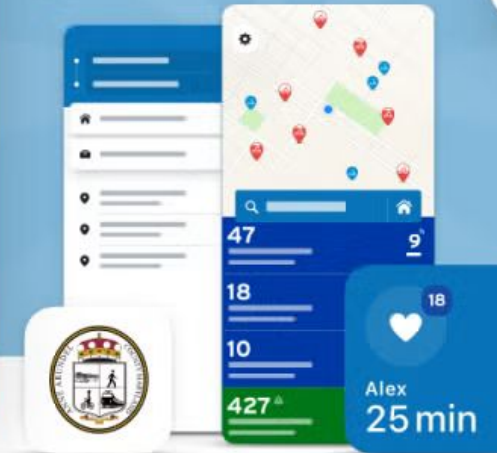

transit
royale

You're getting the Royale treatment

Anne Arundel County Transit insists on the best for their riders. So they partnered with Transit to level up your commute.

That's right: since you ride Anne Arundel County Transit regularly, you automatically qualify for a free subscription to Transit Royale 🎉

Upgrade for free



App icon Accent color

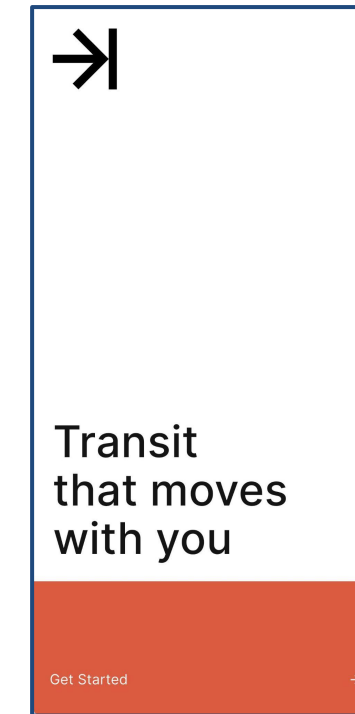
OFFICIAL



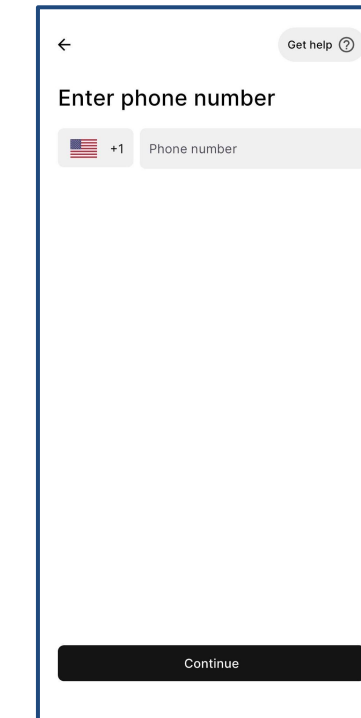
Pingo

Step-by-Step Guide

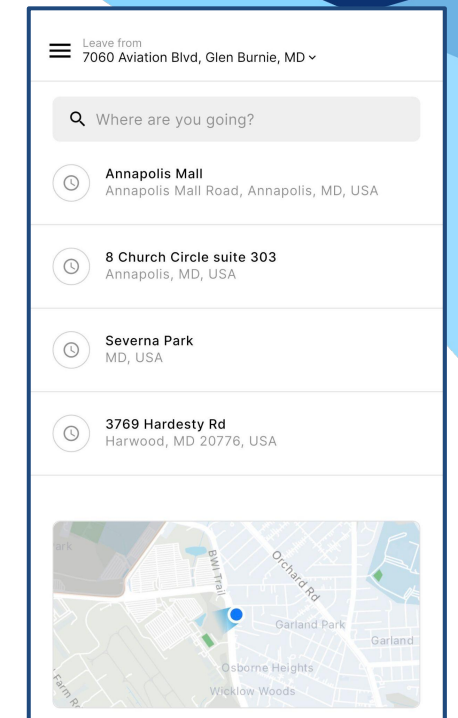
1. Install Pingo from the App Store and open the app.
2. Tap 'Get Started' to begin.
3. Create an account by entering your phone number and verification code.
4. Enter Pickup and Destination addresses.
5. Choose Date & Time
6. Select Zone (North or South)
7. Request ride.



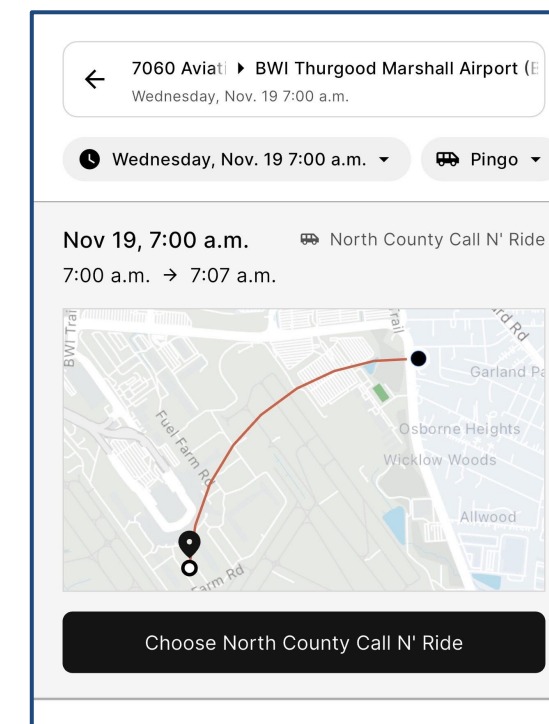
Step 1



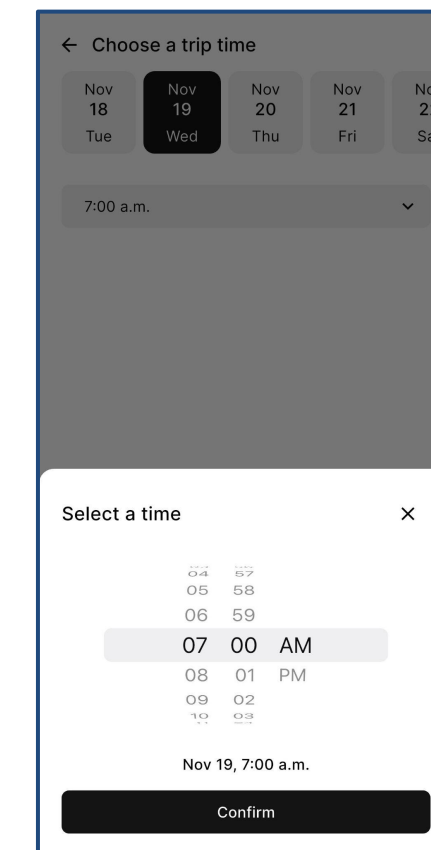
Step 2



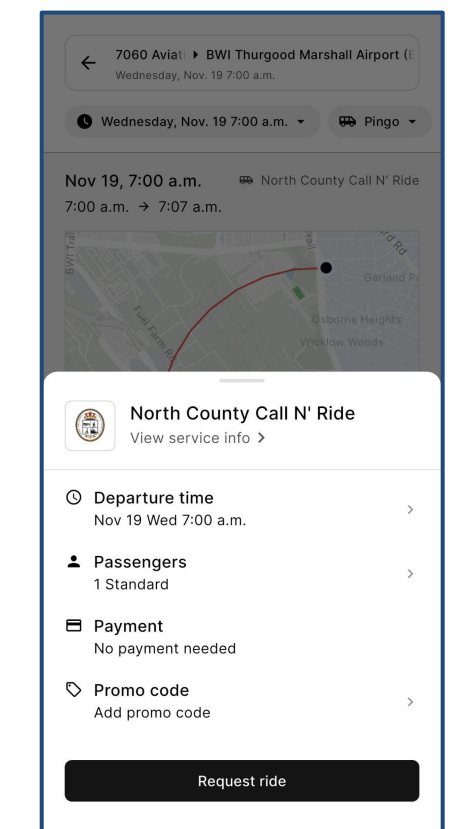
Step 3



Step 4



Step 5



Step 6

What is Pingo?

Ride Pingo is an app that gives you the power to book an on-demand bus within the southern Anne Arundel County service area.

Using the Ride Pingo app, you can book your ride quickly, easily and at any time that suits you and even track the progress of your bus.

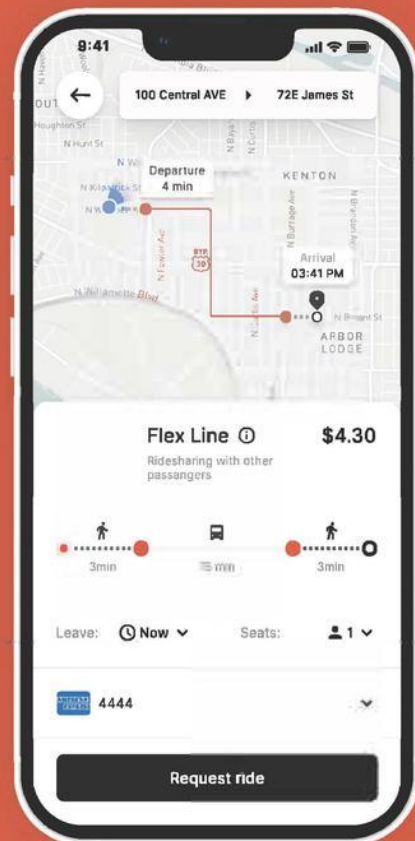
Pingo allows you to access more transit options in your city.

Using the Ride Pingo app, you can book your ride quickly, easily and at any time that suits you and even track the progress of your bus.

→pingo

Available In
App Stores

Order a bus to your door



Request a ride to your location via the app.
With some more instructions here

Get started

1

Get the app

Something goes here with some short instructions

2

Open the app

Something goes here with some short instructions

3

Verify + go!

Something goes here with some short instructions

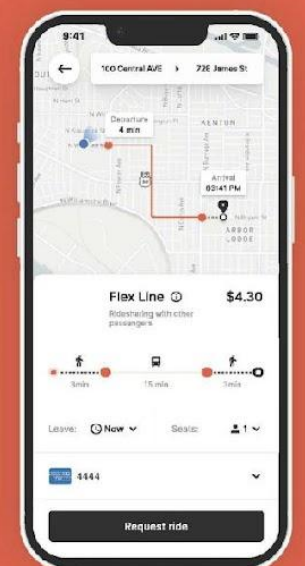


ridepingo.com

On-demand rides for the same cost as the bus.

Tap the app → Get a bus

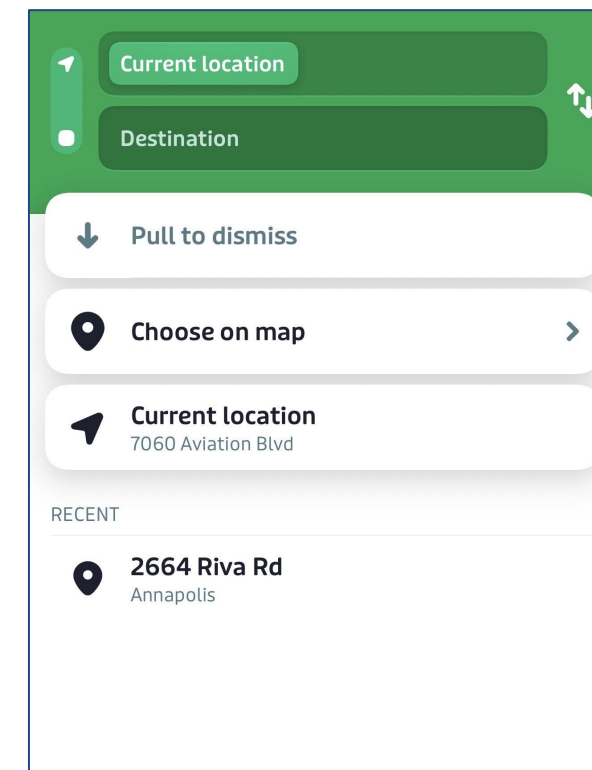
ridepingo.com



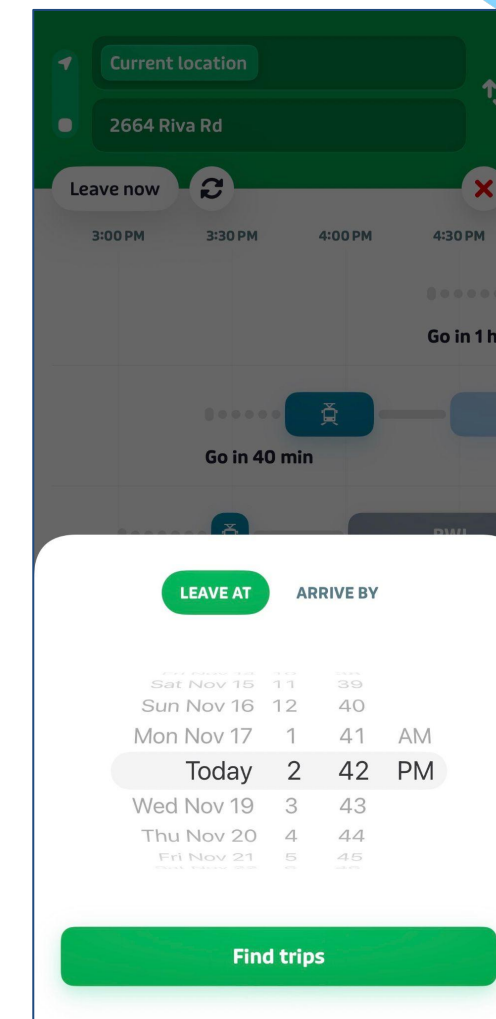
Transit Royale

Step-by-Step Guide

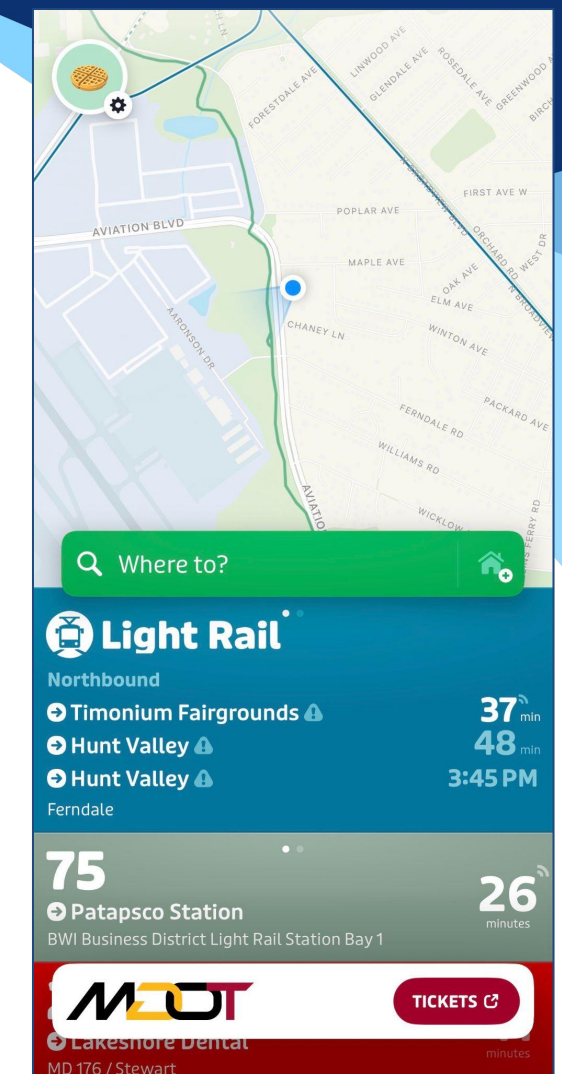
1. Install Transit App from the App Store and open it.
2. Tap 'Where To' to begin.
3. Enter your destination
4. Choose where you want to travel.
5. Review trip options and departure times.
6. Find trip and view step-by-step details.
7. Start navigation 'Go'



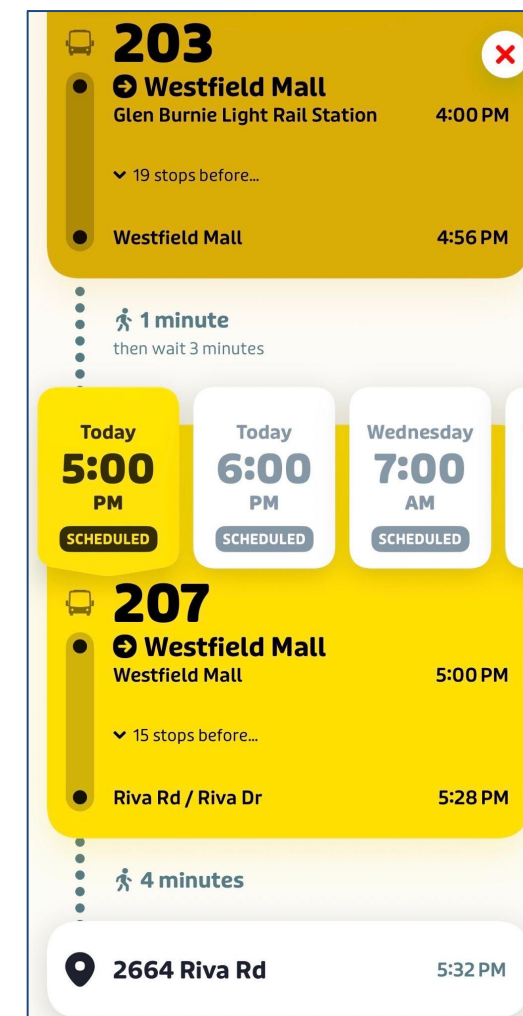
Step 1



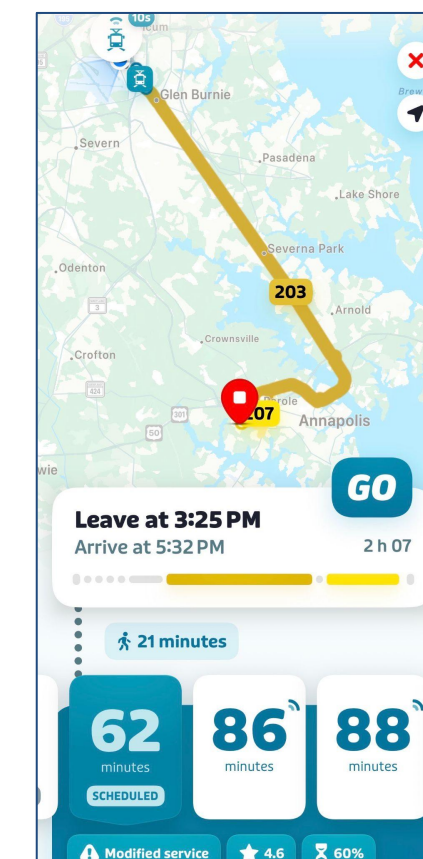
Step 2



Step 3



Step 4



Step 5

- Exploring Anne Arundel County has never been easier, thanks to this user-friendly apps designed to customize your trip planning needs.
- Exclusive free premium access to residents using the application within the Anne Arundel County area.
- With features like personalized itineraries & real-time traffic updates, these digital tools ensure a seamless travel experience.

The image shows a promotional screen for the 'transit royale' app. At the top, the Anne Arundel County seal is displayed above the text 'IS UPGRADING YOU TO'. Below this is a yellow crown icon and the 'transit royale' logo. The main heading reads 'You're getting the Royale treatment'. The text below explains that Anne Arundel County Transit partners with Transit to provide a free subscription to Transit Royale for regular riders. A 'Upgrade for free' button is at the bottom of the blue section. To the right, a preview of the app interface shows a map, a list of routes with numbers (47, 18, 10, 427), and a user profile for 'Alex' with a heart icon and '25 min'. Below the app preview, there are labels for 'App icon' and 'Accent color'. At the bottom, the word 'OFFICIAL' is followed by the app's icon and the county seal with a green checkmark.

IS UPGRADING YOU TO

transit[®]
royale

You're getting the Royale treatment

Anne Arundel County Transit insists on the best for their riders. So they partnered with Transit to level up your commute.

That's right: since you ride Anne Arundel County Transit regularly, you automatically qualify for a free subscription to Transit Royale 🎉

[Upgrade for free](#)

App icon Accent color

OFFICIAL

📱 🏛️

PassioGO

**TRACK YOUR
BUS IN REAL
TIME**

Use the Passio GO app!



SCAN ME



**WiFi
FREE**

Download on the
App Store

GET IT ON
Google Play

**LIVE
VEHICLE
TRACKING**

Use the Passio GO app!



Download on the
App Store

GET IT ON
Google Play

www.passiogo.com



Parole Transit Center

- **First dedicated transit center in Anne Arundel County.**
- **Hub for AACO, Annapolis, MTA, Queen Anne's County**
- **Bus bays for 12+ vehicles at a time.**
- **Restrooms, waiting area, ticket office, vending, staff lounges and locker rooms.**

Transit Operations Facility


- **Purpose-built facility for OOT operations and fleet management.**
- **Temp buildings to start operations in 2026, permanent structures by 2030.**
- **Space for 30+ standard buses and EV buses, with conduit for expansion.**
- **Staff and contractor amenities.**





Low-Emission Passenger Ferry

- **We received a grant for \$4.9 Million to start passenger ferry service between Annapolis and Baltimore.**
- **First inter-city ferry on the Bay in over 60 years.**
- **Intermediate stop on Kent Island**
- **Charging will be performed at both terminus, refueling at Annapolis.**



THANK YOU

www.aacounty.org/transit

Transit Training: <https://www.aacounty.org/transportation/transit/transit-training-request>

Email: transportation@aacounty.org

410-222-0022