

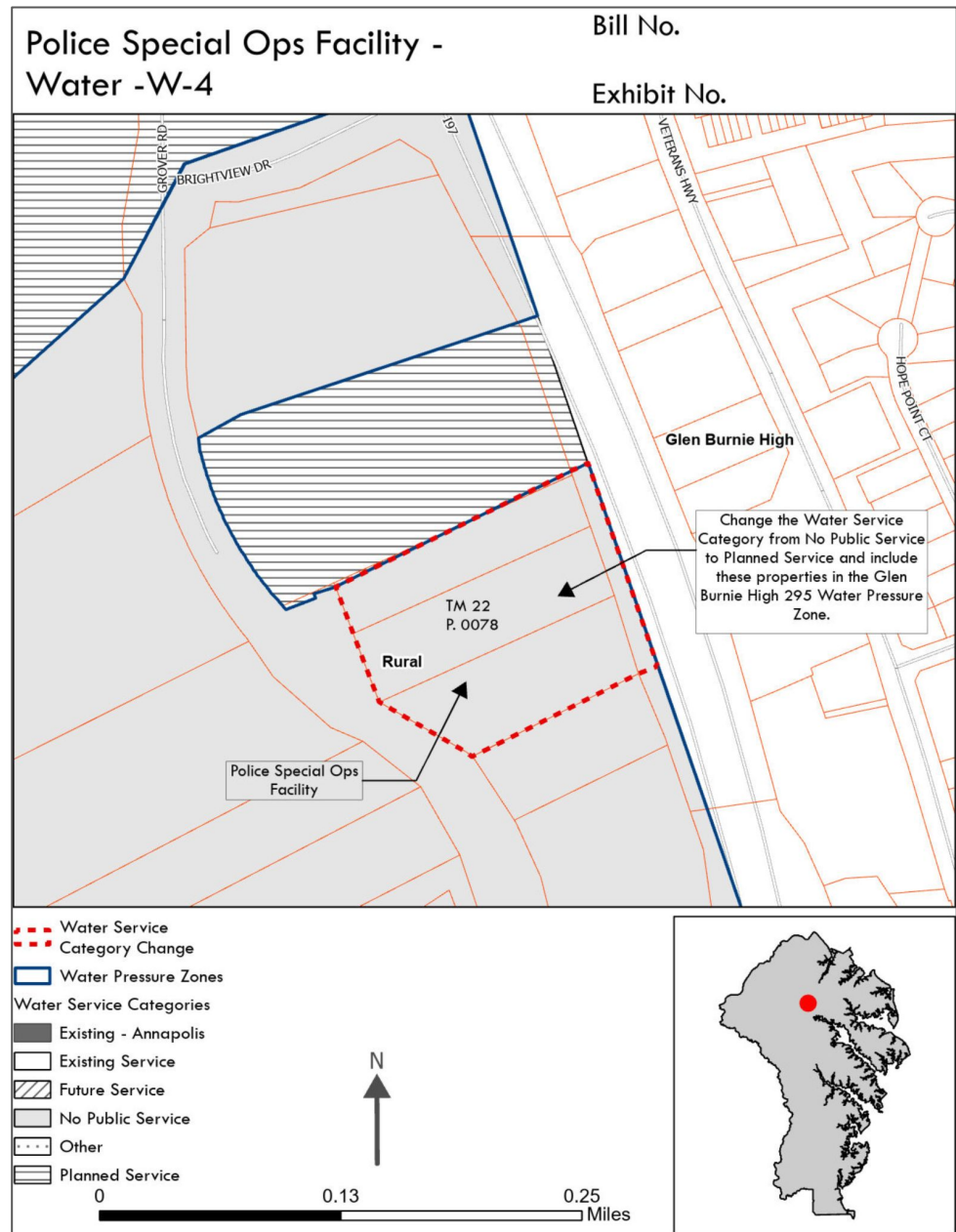
Water and Sewer Master Plan Amendments Planning Advisory Board

September 10, 2025



Amendment Request

- Changes the water service category from No Public Service to Planned Service and includes the property in the Glen Burnie 295 High Water Pressure Zone in order to serve the future Police Special Operations building.

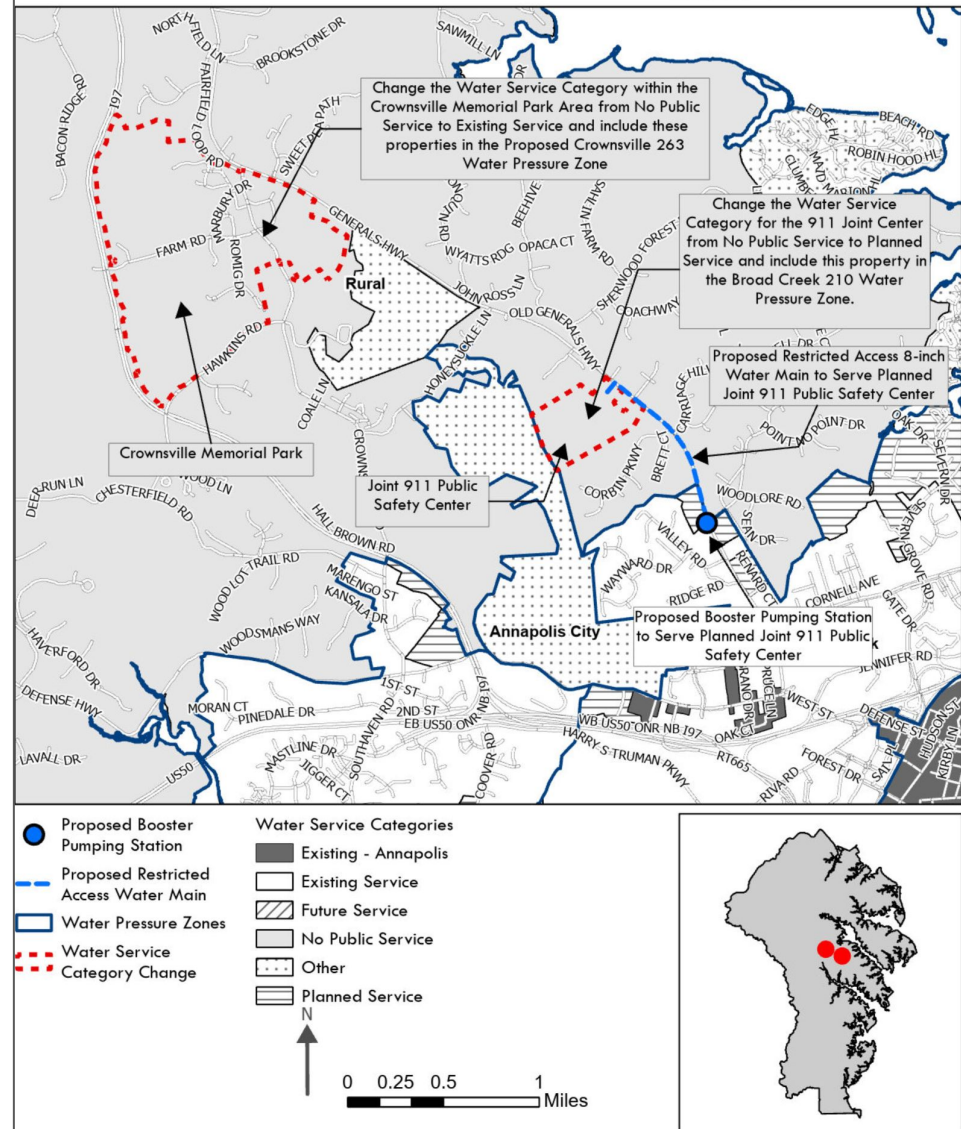


Amendment Request

- Changes the water service category for the Crownsville Memorial Park area from No Public Service to Existing Service and expands the service area boundary to bring the area into the proposed Crownsville 263 Water Pressure Zone.
- Changes the water service category for the future Joint 911 Public Safety Center from No Public Service to Planned Service and expands the service area boundary to bring the area into the Broadcreek 210 Water Pressure Zone.
- Includes a symbol that shows a proposed booster pump station and the addition of an 8-inch restricted access water main to serve the future Joint 911 Public Safety Center.
- Includes text changes to Chapter 3 of the WSMP to incorporate the Crownsville 263 Water Pressure Zone, and revise the Broad Creek 210 Water Pressure Zone. See Attachment A for specific changes.

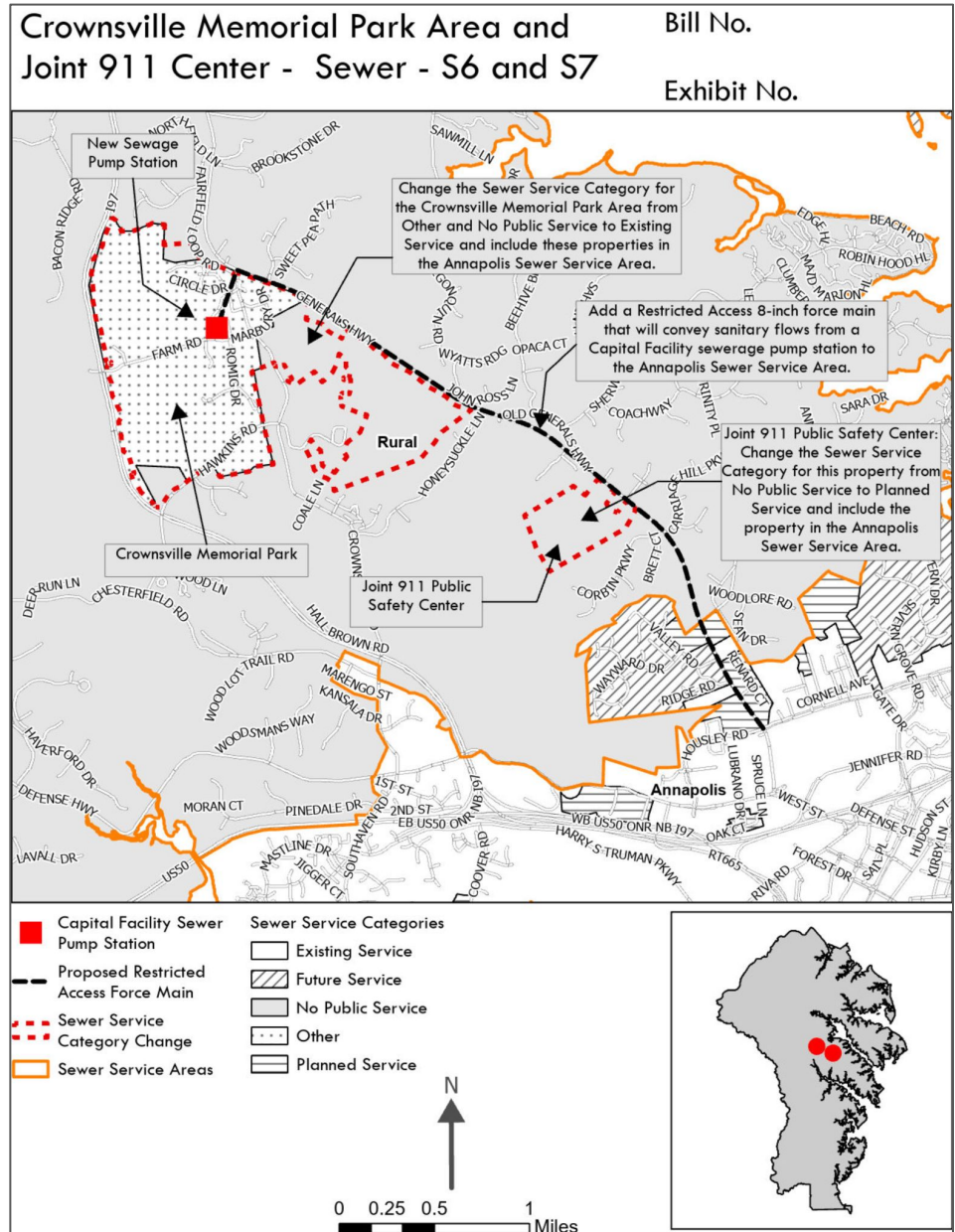
Crownsville Memorial Park Area and Joint Bill No. 911 Center - Water - W6 and W7

Exhibit No.



Amendment Request

- Changes the sewer service category for the Crownsville Memorial Hospital Memorial Park area from Other and No Public Service to Existing Service.
- Changes the sewer service category from No Public Service to Planned Service for the future Joint 911 Public Safety Center.
- Adds a symbol to show the Capital Facility Sewer Pump Station at the Crownsville Memorial Park area.
- Changes the sewer service area boundary in order to move the Crownsville Memorial Park area and the future Joint 911 Public Safety Center into the Annapolis Sewer Service Area.
- Adds an 8-inch restricted access sewer main that will convey flows from the Capital Facility Sewerage Pump Station to the Annapolis Sewer Service Area.
- Includes text changes to Chapter 4 of the WSMP to incorporate the revision of the Annapolis Sewer Service Area, which includes a new restricted access force main and sewage pumping station to serve the Crownsville Memorial Park area and future Joint 911 Public Safety Center.





Questions?