

Community Wellbeing in Anne Arundel County: How Data Can Help Us Build Stronger Communities

September 25, 2025

Asha Smith, OEHR Director

Elizabeth Funsch, ArundelStat Director

Neri Ordaz, ArundelStat Analyst

Alex Resney, ArundelStat Analyst

Agenda

01 Background

02 Index
Contents

03 Exploring the
Index

04 Using the
Index

01

Background

In Partnership with the Office of Equity and Human Rights, Index Vision:



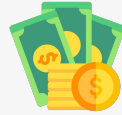
Make data Accessible

Make data about the wellbeing of county residents easier to understand and easier to access



Make equitable decisions

Enable decision makers (the County Executive, departments, council members, etc.) to make decisions that take existing gaps (especially in social determinants of health!) into account



Maximize resources

Ensure we make the most of finite county resources



Empower Residents

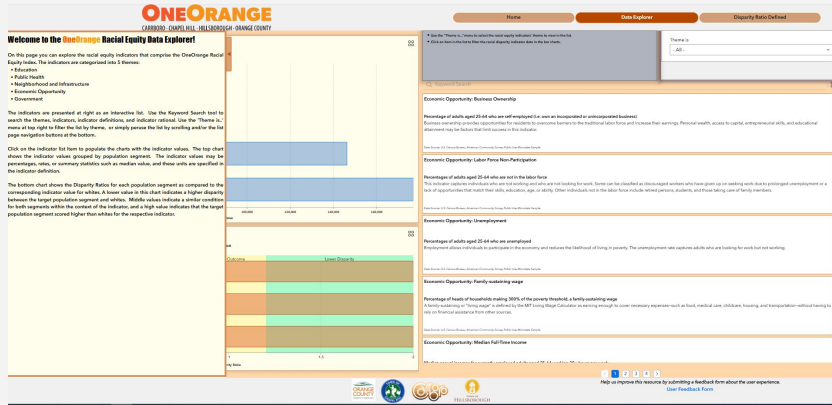
Provide residents with data needed to advocate for and serve their communities, and hold their representatives accountable



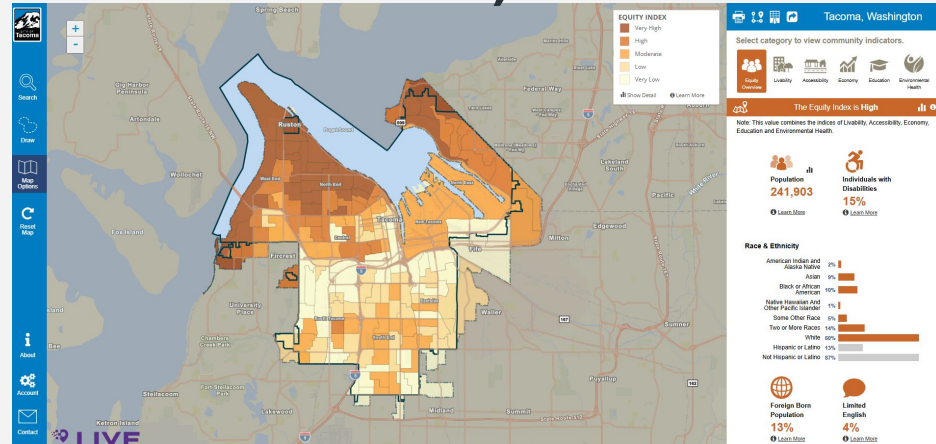
02

Index Contents

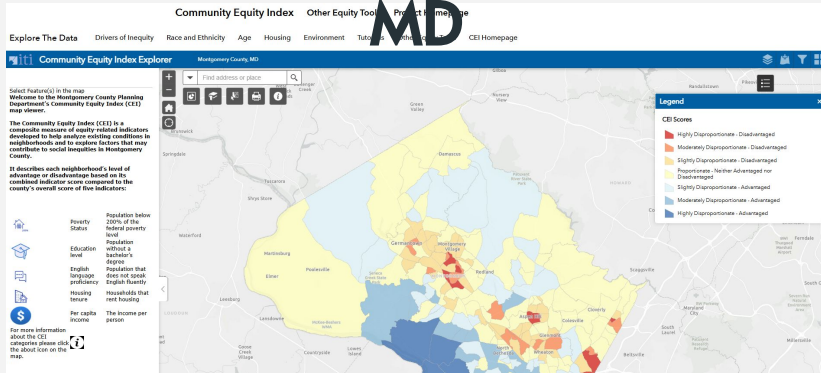
Orange County, NC



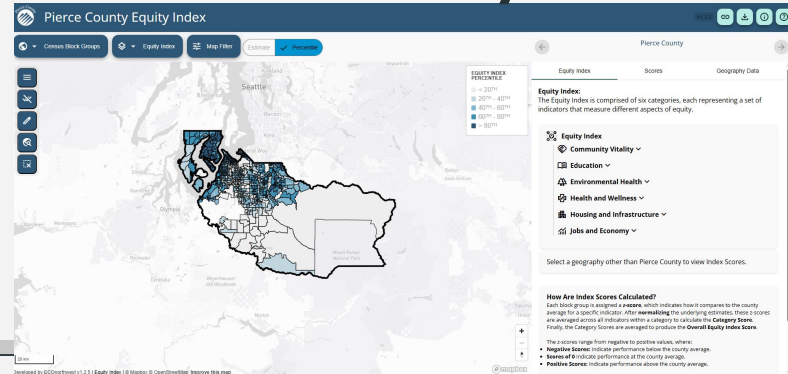
Tacoma, WA



Montgomery County, MD



Pierce County, WA



4 Categories, 16 metrics



Prosperity

- Homeownership
- Median household income
- Poverty
- Housing cost-burden
- Educational attainment



Health

- Life expectancy
- Physical health
- Mental health
- Health insurance



Access

- Child care
- Vehicle
- Grocery store
- Language
- Broadband



Security

- Crime
- Natural hazards

Data Sources (Primarily used American Community Survey)

Data Source	Metric
American Community Survey (ACS)	Health insurance rate, homeownership rate, median household income, portion of population under 200% of FPL, housing cost-burden rate, educational attainment, broadband access, English fluency, vehicle access
PLACES Local Data for Better Health	Physical health and mental health
US Small Area Life Expectancy Estimates Project	Life Expectancy
NIBRS Estimate	Crime rate per capita
National Risk Index	Natural hazard risk
Food Access Research Access	Portion of population with grocery store acces
Center for American Progress, Childcare Desert Map	Children per child care spot

03

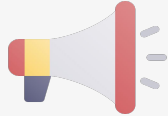
Exploring the Index

04

Using the Index



How can residents use the CW Index?



Advocacy

Support the case for investments (in recreational space, affordable childcare, etc.)



Serve community members

Churches and community organizations can use the maps to better understand the gaps in their specific community's needs



Grant-writing

Leverage data to substantiate need (for after school programs, mental health centers, etc.)



Hold decision makers accountable

Engage in more productive and informed conversations about policy decisions by asking officials to address specific data points

Questions & Comments?

Reach out! We'd love to hear about ways you've used the CW Index or ways we can make it better!

ArundelStat@aacounty.org



CREDITS: This presentation template was created by [Slidesgo](#), and includes icons by [Flaticon](#), and infographics & images by [Freepik](#)