



Plan2040 Engage Arundel

April 30, 2025



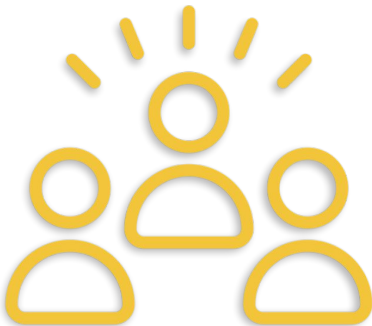
Plan2040 Overview



Natural Environment



Built Environment



Healthy Community



Healthy Economy

General Development Plan

- Countywide Policy Document
- Key Themes
 - Smarter
 - Greener
 - More Equitable
- Goals, Policies, and Strategies

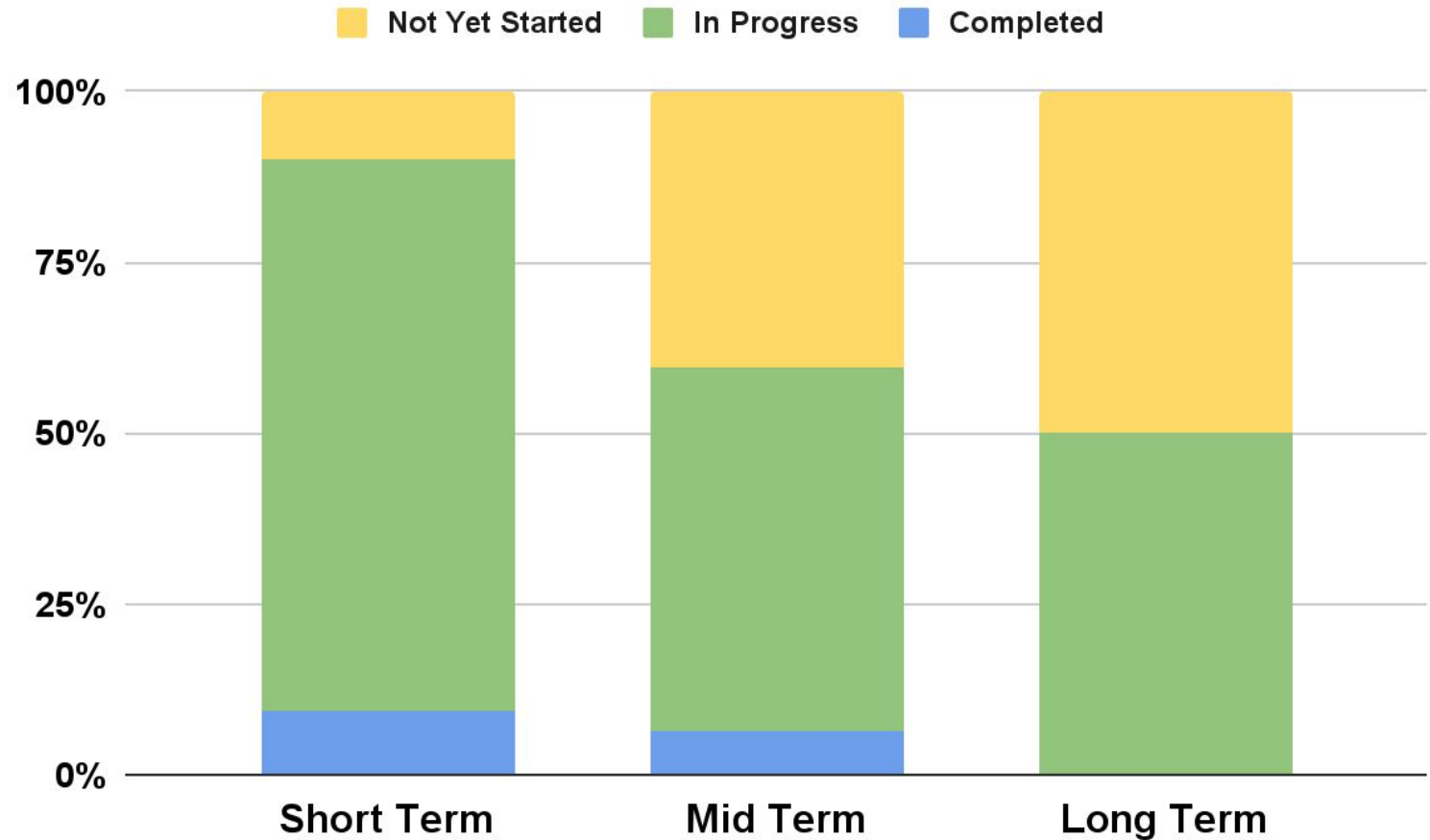
aacounty.org/Plan2040



Key Performance Indicators

Progress to Date

86% of all
Plan2040
Strategies are In
Progress or
Completed.





Land Stewardship



Vegetation



Water and Soils



233 acres

of farm and forest conserved

through easements in 2024. Total of 14,616 acres protected by easements through Agricultural and Woodland Preservation Program.

3,500 trees

planted in 2024

by Watershed Stewards Academy volunteer projects.

3,073 acres

of impervious surfaces treated

with stormwater best management practices (exceeds the requirement under the current MS4 permit)

154 upgrades

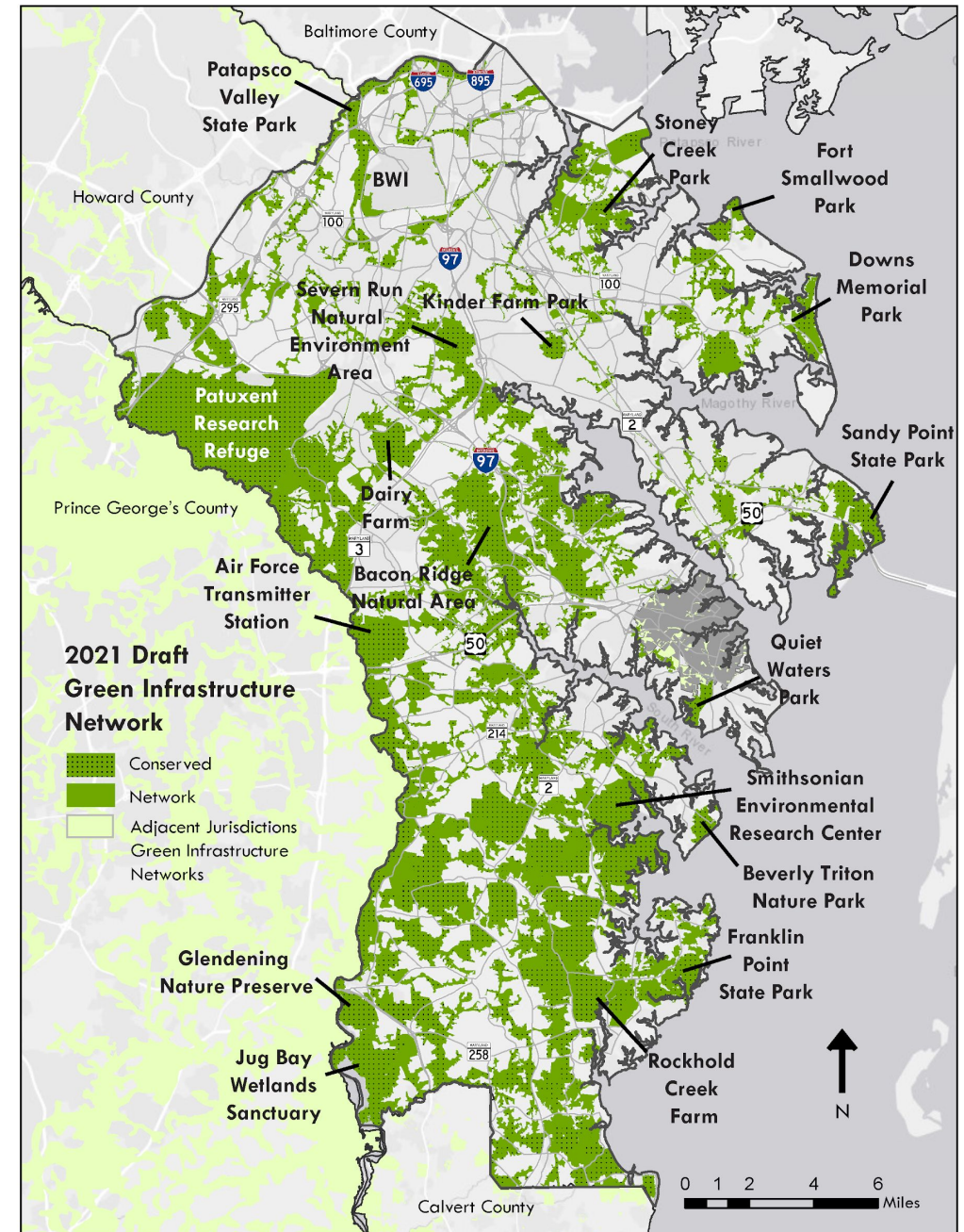
septic systems upgraded in 2024

to reduce nitrogen pollution and 13 septic systems were converted and connected to sewer systems.

Natural Environment Goals

NE3: Protect greenways, open space, and rural areas.

- ▶ Over 430 acres conserved in Green Infrastructure Network in 2024
- ▶ Over 1,700 acres conserved since Jan 1, 2020. Goal of 5,000 acres by 2030.
- ▶ Met goal of 30% of County conserved by 2030

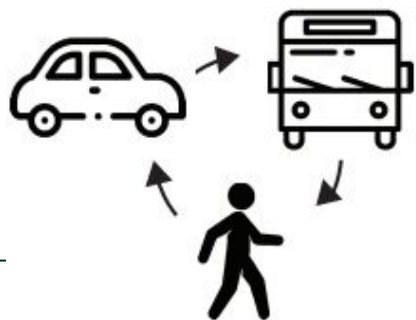




Residential
Development



Transportation



963 residential building permits

issued in 2024

47% within the Targeted Growth Area
and 98% in Priority Funding Areas

644 residential units

approved in final subdivision plans in 2024

4% inside Targeted Growth Areas
and 99% in Priority Funding Areas

5.9 Million VMT

(Vehicle Miles Travelled) in Anne Arundel County

in 2023, according to the MDOT State Highway
Administration 2023 Annual Report. This was a 5%
decrease from 6.2 Million in 2019.

95% on time

performance for transit routes in 2024



Emergency Response



3.9 minutes

Emergency Response Time

for Priority 1 calls that reach the Anne Arundel Police Department (4.0 minutes target)

Education



9 of 111 schools

at or above capacity

based on School Utilization Chart adopted by County Council September 2024, compared to 31 of 109 schools at or above capacity in 2022

Libraries



0.44 square feet

of library space per capita

with the target being 0.5 square feet of Gross Floor Area (GSF). County libraries also have an 88% customer satisfaction rating.

Parks



11,940 acres

of public park land

with the target being 12,330 acres by 2040

Senior Centers



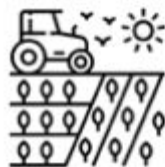
162,466 visits

to Senior Activity Centers in fiscal year 2024

on track to reach the goal of 300,000 annual visits by 2028



Healthy Economy



2.8% unemployment

The unemployment rate in November 2024 was above the 1.8% for November 2023, but is lower than the State unemployment rate of 3.1%.

Vacancy Rates

Commercial Property Type	December 2023	December 2024
Office	7.0%	7.5%
Flex	5.4%	8.4%
Industrial	4.0%	6.9%
Retail	4.3%	3.3%

36 loans for \$3.5M

closed by AAEDC in 2024
to support local businesses

Thank you!

**You can see the
Plan2040 Annual Report at
aacounty.org/Plan2040**