



— *Making a difference, together* —

**Bacon Ridge Natural Area  
Severn Chapel Area  
Pre-Construction Community Meeting**

JUNE 18, 2025 ▪ 6:00 PM ▪ Virtual

Project No. P588001



[DPWandYOU.com](https://www.dpwandyou.com)

# Meeting Information

- Tonight's meeting will be audio recorded.
- Please hold questions until the end of the presentation.
  - An opportunity to ask questions in the Q&A at the end of the meeting.
- This public meeting presentation will be available on the DRP website with audio:
  - <https://www.aacounty.org/recreation-parks/capital-projects/bacon-ridge-natural-area>





# Meeting Agenda

1. Introductions
2. Project Location
3. Project Goals & Scope
4. Existing Conditions & Site Photos
5. Summary of Proposed Improvements
6. Proposed Features and Amenities
7. Construction Impacts
8. Anticipated Schedule
9. Q & A



# 1. Introductions



## **Anne Arundel County Department of Public Works**

Katie Garafola, Project Manager



## **Anne Arundel County Department of Recreation and Parks**

Bruce Bruchey, Chief of Planning and Construction



## **Design Consultant – Century Engineering, a Kleinfelder Company**

Michael Pieranunzi, PLA, LEED AP, Senior Project Manager

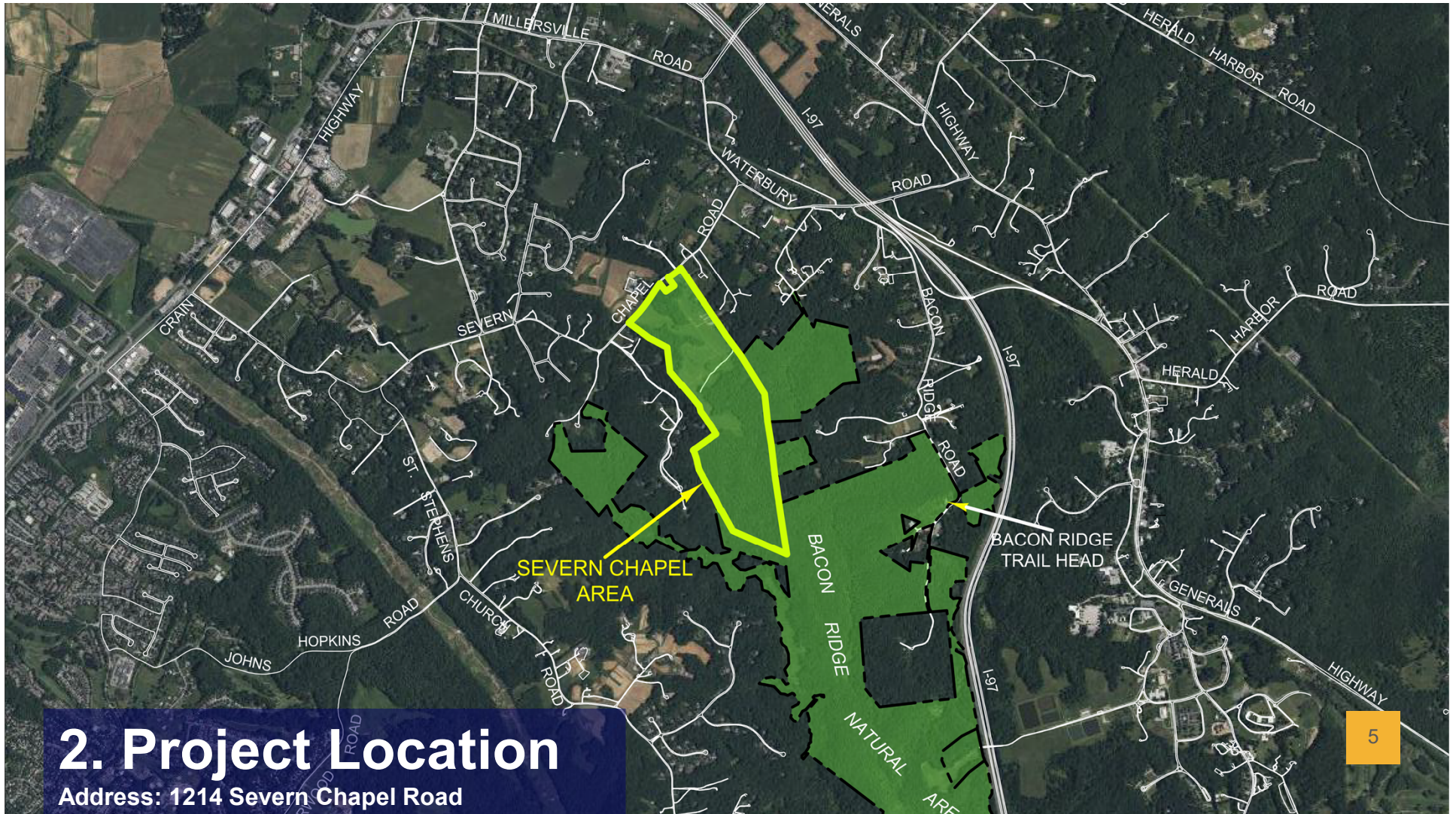
Lydia Vaccare, CBLP, Landscape Designer



## **Construction Manager – KCI Technologies, Inc.**

Stephen Thompson, PE, Senior Construction Manager





### 3. Project Goals & Scope

#### Goals

- Proposed park improvements based on the 2022 Bacon Ridge Natural Area Forney Expansion Master Plan
- Goal is to proceed from the initial Master Plan design concepts to construction and completion of select park improvements

#### Scope

##### Scope includes:

- Entrance and park road improvements
- Improvements to the current park ranger station
- New paved visitor parking lots (including ADA parking, bus/trailer parking)
- Stormwater management facilities for the new impervious area
- Landscaping with native species to provide shade and enhance the park experience

##### Design changes (since schematic):

- Ranger training range has been removed
- Bus/trailer parking lot layout changes
- Road widening from 20 ft to 24 ft (fire department)



## 4. Existing Conditions





## 4. Site Photos



Photo A: The existing entrance on Severn Chapel Road



## 4. Site Photos



Photo B: The existing ranger station building and parking area



## 4. Site Photos

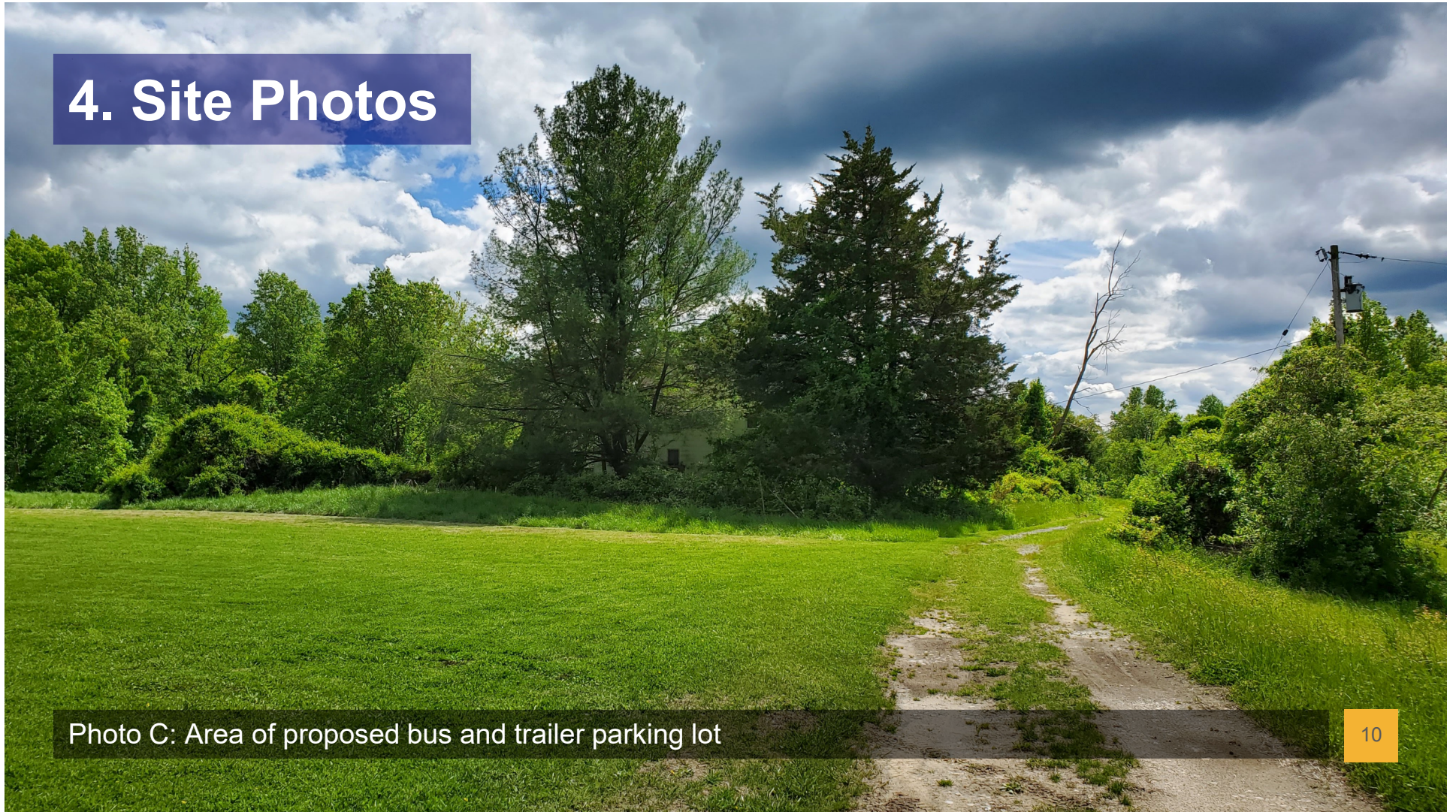


Photo C: Area of proposed bus and trailer parking lot

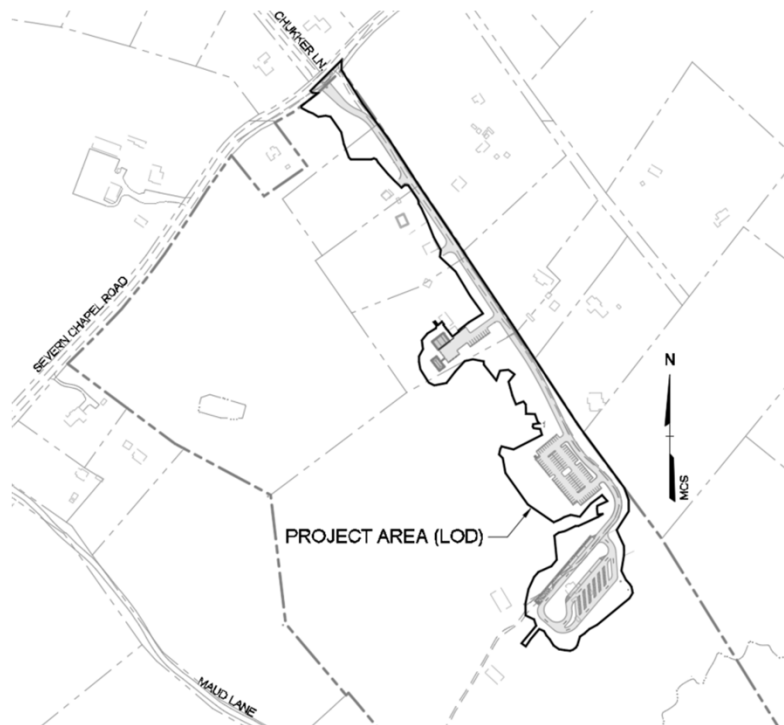


## 4. Site Photos



Photo D: View of the park, facing north – existing ranger station and public parking in background

## 5. Summary of Proposed Improvements



Proposed Conditions Plan



**DPW & YOU**

- **Proposed Parking:**
  - (92) Standard parking spaces
  - (5) ADA-Accessible parking spaces
  - (15) Bus/trailer parking spaces
  - (9) Ranger parking spaces
- **Proposed Road Configuration:**
  - 24-ft-wide paved, open section, following the existing Forney road
- **Stormwater Management (SWM):**
  - Submerged Gravel Wetlands
  - Micro-bioretenention
  - Bioswales
  - Sheet flow (non-rooftop disconnect)
- **Total Limit of Disturbance (LOD):** 9.9 acres



## 6. Proposed Features & Amenities

- Park entrance improvements – shift location & widen entrance on Severn Chapel Rd
- Widen and pave the main park access road – 24 feet wide
- New visitor parking area for trail access (92 standard parking spaces with bike racks)
- Bus/trailer parking area (5 ADA spaces, 15 bus/trailer spaces, bike racks)
  - Angled bus/trailer spaces 12' x 55', parallel spaces 12' x 60'
    - 8 ft. of clear area adjacent to each trailer space for hitching/loading/unloading
  - Unpaved grass area adjacent to trailer parking for overflow parking
  - 3-rail wood fencing around trailer parking area
  - Area near trailer parking with 3 tie-up bays, water spigot, and mounting block
- Ranger station improvements: additional parking; combined storage and deer management building; pavilion (Park Ranger use only)



## 7. Anticipated Construction Impacts

- Severn Chapel Area to be temporarily closed to public during construction
- Access to be maintained for Maintenance division and park rangers

## 8. Anticipated Schedule

- Public Pre-Construction Meeting.....June 18 2025
- Construction Start.....Summer 2025
  - Typical Working Hours: Monday – Friday 7am to 5pm
- Completion.....Summer 2026

## 9. Q&A

- The meeting will conclude at 7:00pm.
- Any questions you may have after the meeting you may contact:

Katie Garafola: [pwvgar24@aacounty.org](mailto:pwvgar24@aacounty.org)  
Project Manager  
Department of Public Works

Thank you for your interest in the Bacon Ridge Natural Area - Severn Chapel Area project.

# Follow DPW



**FACEBOOK**

@annearundeldpw



**YOUTUBE**

Anne Arundel County DPW



**INSTAGRAM**

@annearundelcountypw



**LINKEDIN**

Anne Arundel County  
Department of Public Works



**TWITTER**

@AACoDPW



**DPW & YOU**





## Bureau of Utility Operations

---

**24-Hour Emergency Water Service:**  
(410) 222-8400  
**Billing Inquiries:** (410) 222-1144



## Bureau of Waste Management Services

---

**Bulk Trash Service / Curbside Collections:** (410) 222-6100



## Bureau of Engineering

---

**General Inquiries:** (410) 222-7500



## Bureau of Highways

---

**General Inquiries:** (410) 222-7321  
**Snow Line:** (410) 222-4040  
**Email:** [hwyscustomercare@aacounty.org](mailto:hwyscustomercare@aacounty.org)



## Bureau of Watershed Protection and Restoration

---

**General Inquiries:** (410) 222-4240

## Customer Relations

---

**General Inquiries:** (410) 222-7582  
**Email:** [pwcust00@aacounty.org](mailto:pwcust00@aacounty.org)



**DPW & YOU**