



— *Making a difference, together* —

Wilson House Improvements Public Meeting – Preconstruction

April 24, 2025



DPWandYOU.com

Important Meeting Information

Tonight's meeting will be audio recorded

- Questions can be typed in the Q and A.
- All questions will be answered at the end of the presentation.

The audio recording will be posted to the project website located here:

<https://www.aacounty.org/recreation-parks/capital-projects/hot-sox-field-wilson-park>

Meeting Agenda

- Team Introduction
- Project Overview
- Construction Schedule
- Contact Information

Project Team

Julio Jimenez

Project Manager and Point of Contact
Department of Public Works
pwjime24@aacounty.org

Elizabeth Lerch

Project Manager
Department of Recreations and Parks
rplerc24@aacounty.org

Stephen Thompson

Construction Manager
KCI Technologies INC.

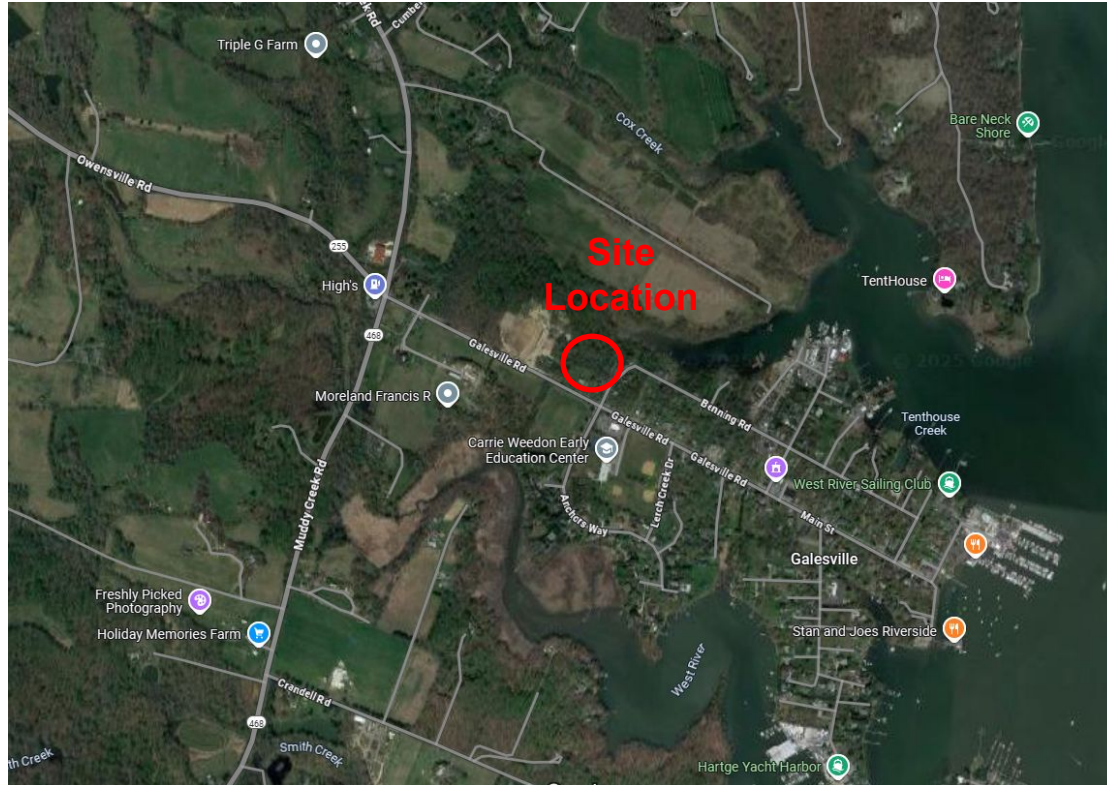
Richie Mohammed

Project Manager (Contractor)
Rich Moe Enterprises, LLC

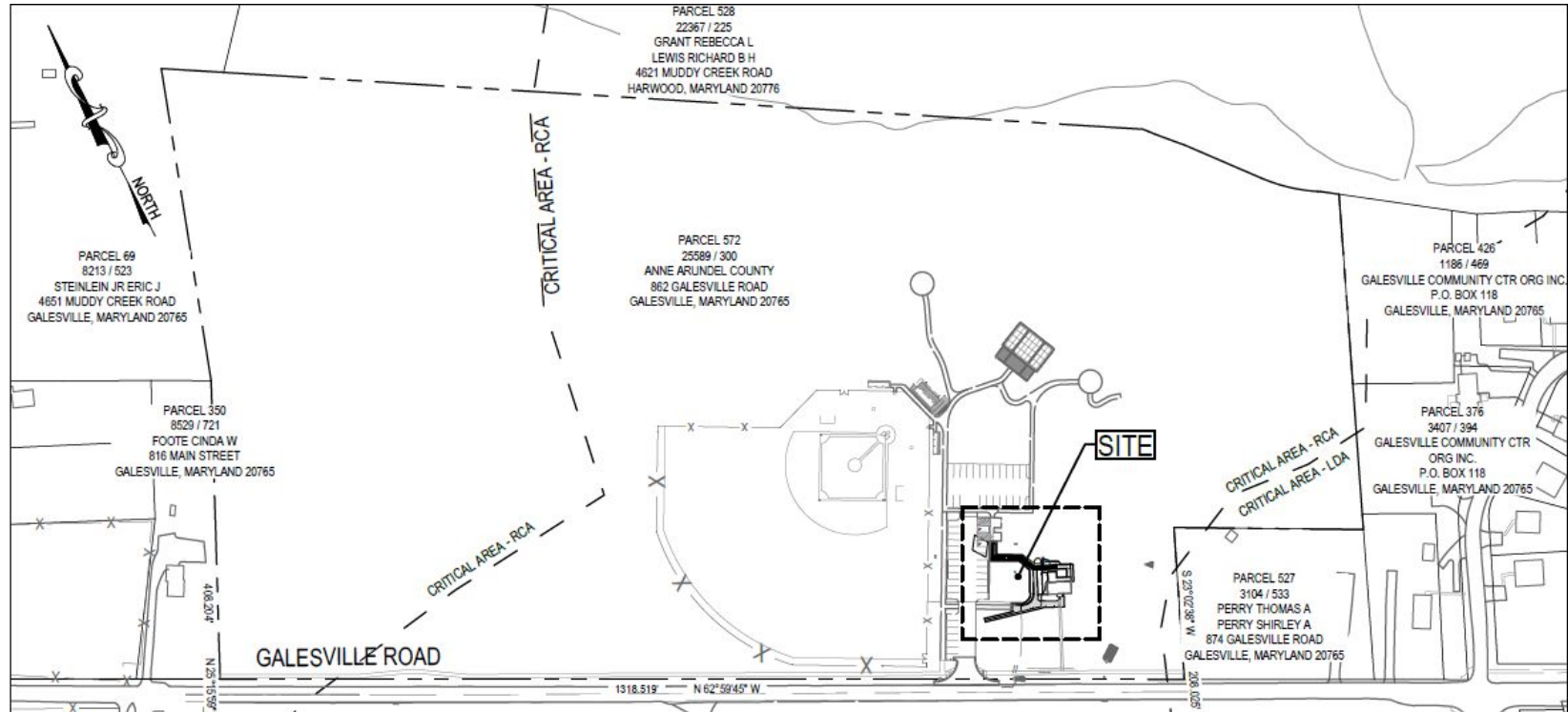
Construction Overview

- Placement of Concrete and Gravel Walkway to Building
- Interior and Exterior Restoration
- Structural Repairs
- Construction of viewing Platform with Accessible Ramp

Jug Bay Environmental Center Area Map

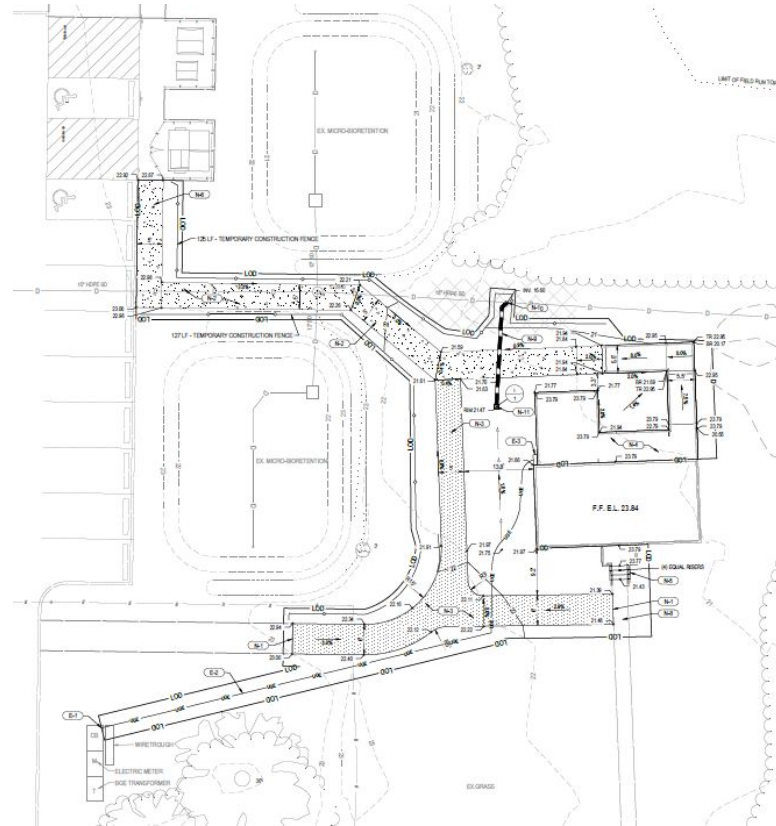


Site Plan



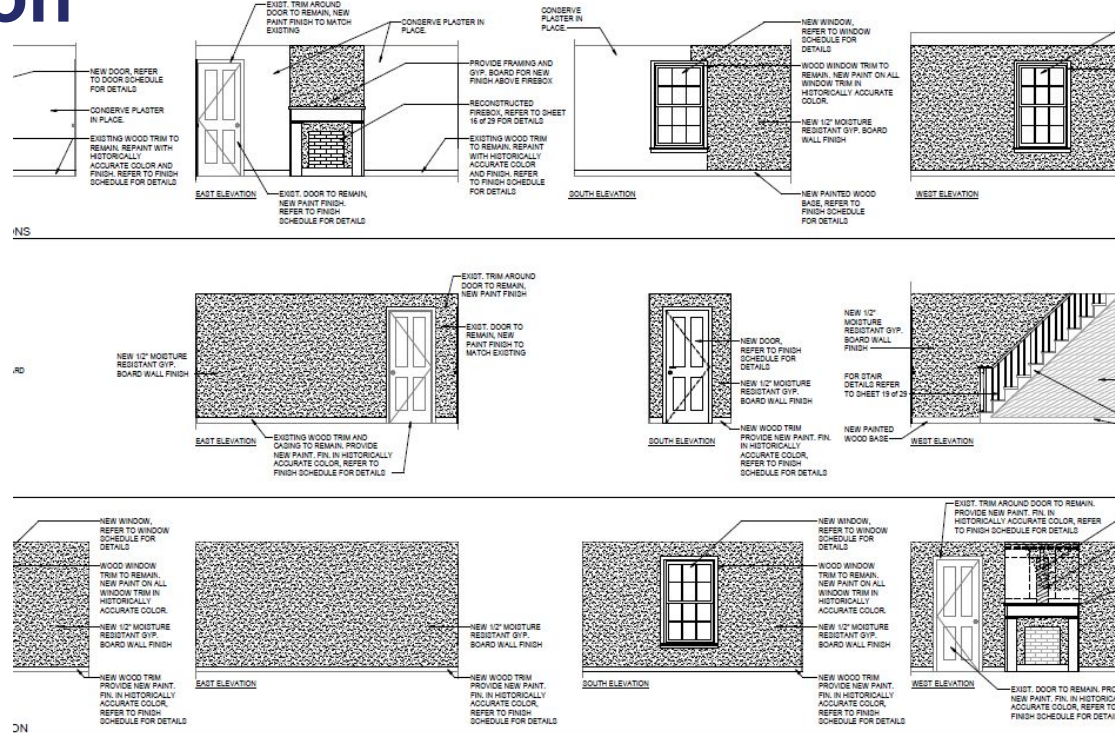
Paved Parking Lot

- Concrete sidewalk connecting to viewing platform
- Gravel walkway from parking area along the West and South ends of building



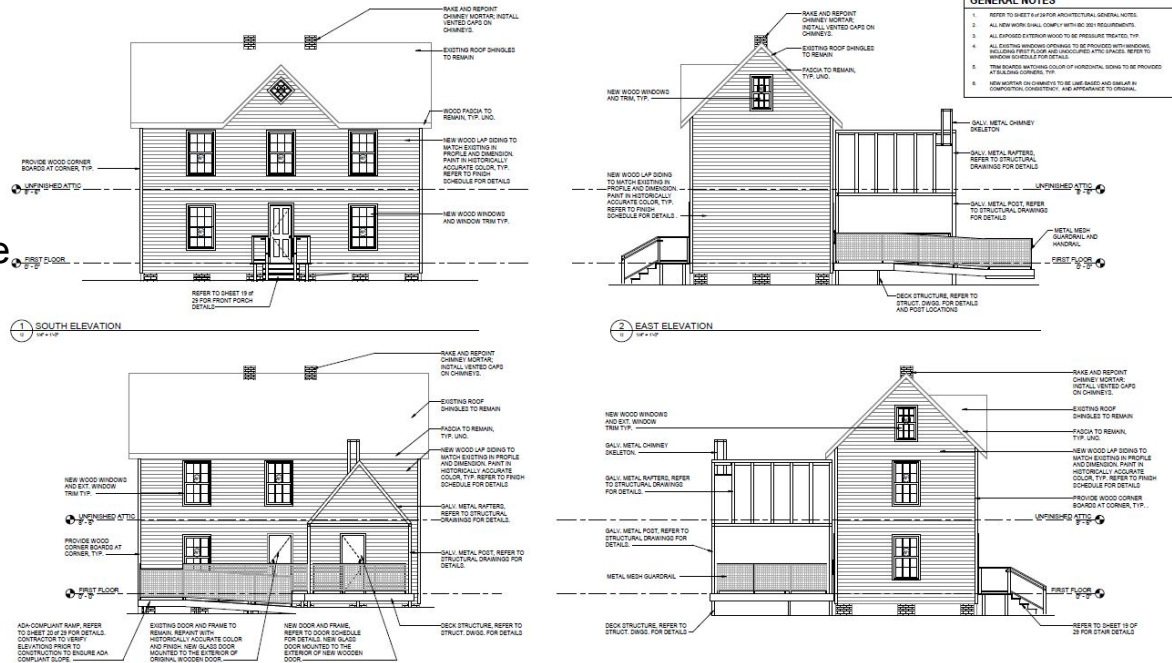
Interior Restoration

- Restoration of the dining room, foyer, parlor, Staircase, and fireplace
- Focus on keeping as much of the original materials and trims
- New finishes and paint will be historically accurate



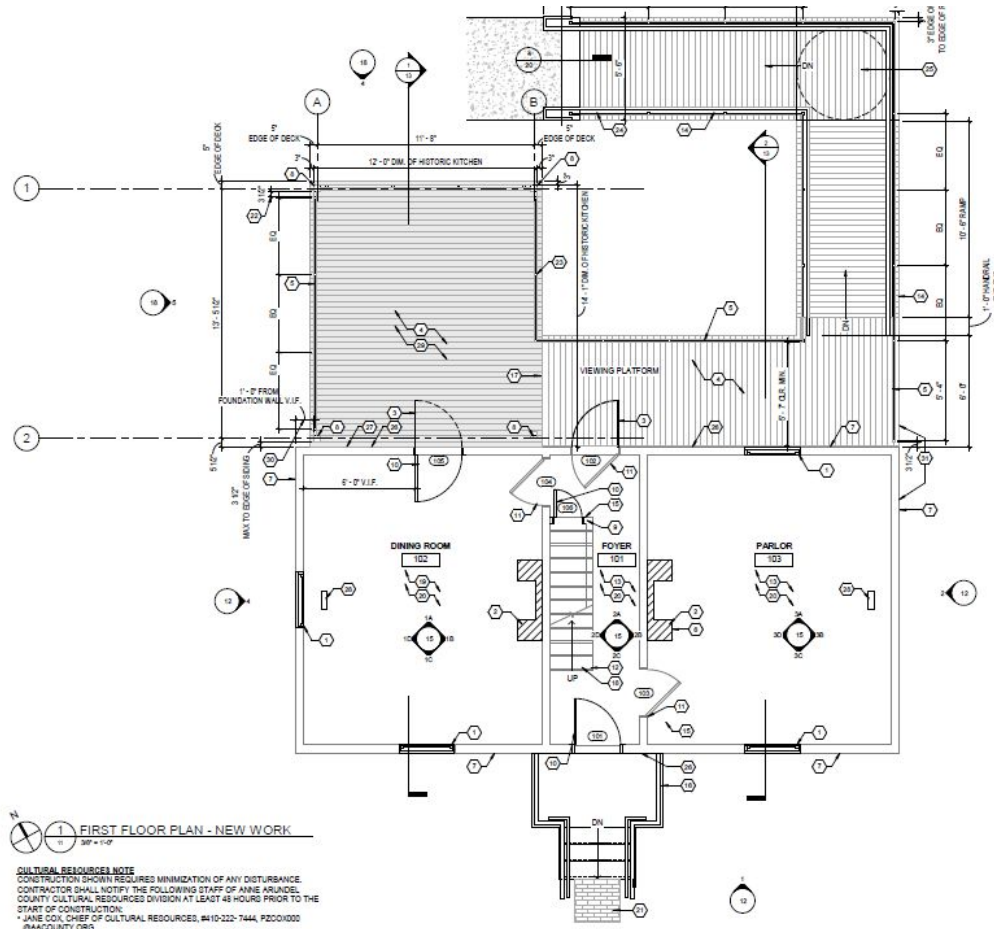
Exterior Restoration

- Restoration of the windows, chimney, porch, and siding
- Focus on keeping as much of the original materials and trims



Viewing Platform

- Wooden viewing platform on the rear of building
- Access ramp connecting to concrete sidewalk
- No entry into building



Traffic and Noise Impacts

- No anticipated roadway closures
- Work vehicles coming through Owensville Road and Muddy Creek Road onto Galesville Road
- Typical work hours are 7:00 AM to 5:00 PM, Monday to Friday

Proposed Construction Schedule

- Anticipated Start of Construction: May 2025
- Anticipated Construction Completion: September 2025

Questions?

Follow DPW



FACEBOOK

[@annearundeldpw](https://www.facebook.com/annearundeldpw)



YOUTUBE

[Anne Arundel County DPW](https://www.youtube.com/AnneArundelCountyDPW)



INSTAGRAM

[@annearundelcountypw](https://www.instagram.com/annearundelcountypw)



LINKEDIN

[Anne Arundel County
Department of Public Works](https://www.linkedin.com/company/AnneArundelCountyDepartmentofPublicWorks)



TWITTER

[@AACoDPW](https://twitter.com/AACoDPW)



DPW & YOU



Bureau of Utility Operations

24-Hour Emergency Water Service:
(410) 222-8400
Billing Inquiries: (410) 222-1144



Bureau of Highways

General Inquiries: (410) 222-7321
Snow Line: (410) 222-4040
Email: hwyscustomercare@aacounty.org



Bureau of Waste Management Services

Bulk Trash Service / Curbside Collections: (410) 222-6100



Bureau of Watershed Protection and Restoration

General Inquiries: (410) 222-4240



Bureau of Engineering

General Inquiries: (410) 222-7500

Customer Relations

General Inquiries: (410) 222-7582
Email: pwcust00@aacounty.org

