



Anne Arundel County  
Bureau of Watershed  
Protection  
& Restoration

[AARivers.org](http://AARivers.org)

# Managing Stormwater Runoff in Anne Arundel County

*Resources for Residents & Community Champions*

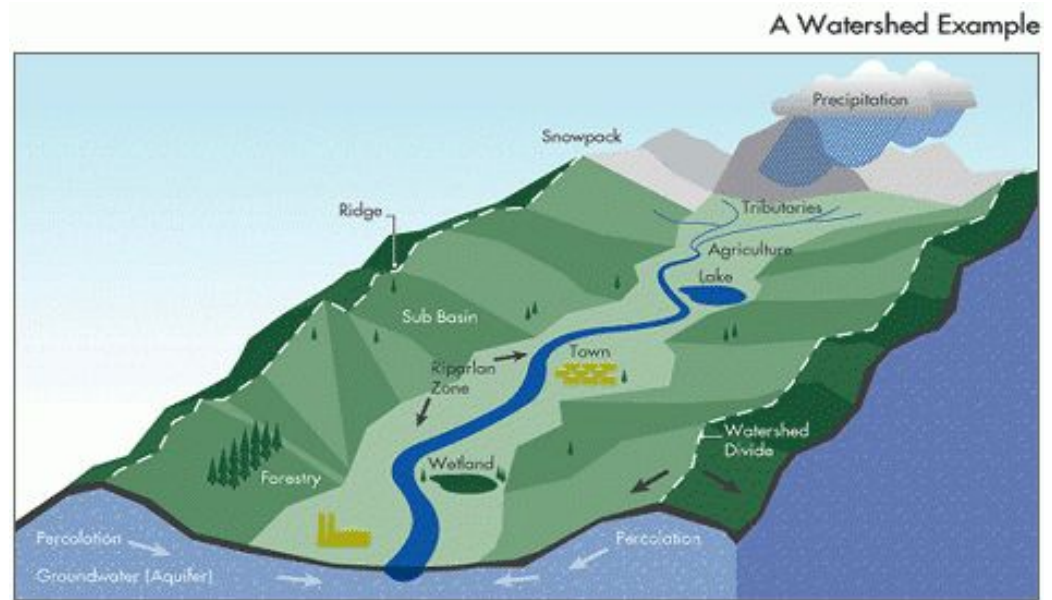
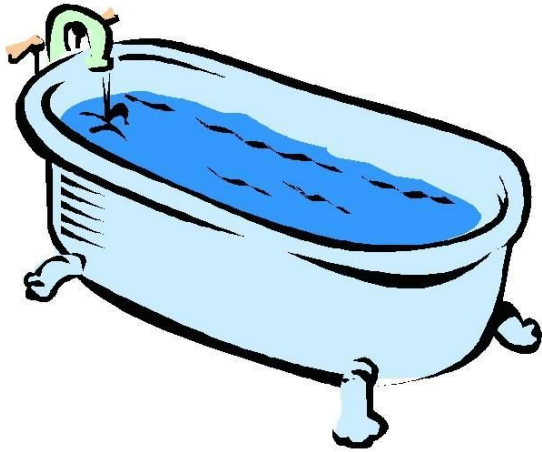
Sally Albright, Education & Outreach Coordinator  
[pwalbroo@aacounty.org](mailto:pwalbroo@aacounty.org) | 410-222-0136

# Outline

1. What is a watershed and how can you find out which watershed you're in?
2. Why is stormwater runoff a concern, especially for our County?
3. Where do the regulations come from, and where does the County come in?
4. **For PROPERTY OWNERS** - Watershed Protection Fee (WPRF) + tax credits
5. **For COMMUNITIES and NGOs** - local resources to empower action
6. **For EVERYONE** - SeeClickFix / 311

# What is a watershed?

A watershed is the **land area** where, due to slope and topography, all water will drain toward a common downstream waterway, otherwise known as a “drainage area/basin”.



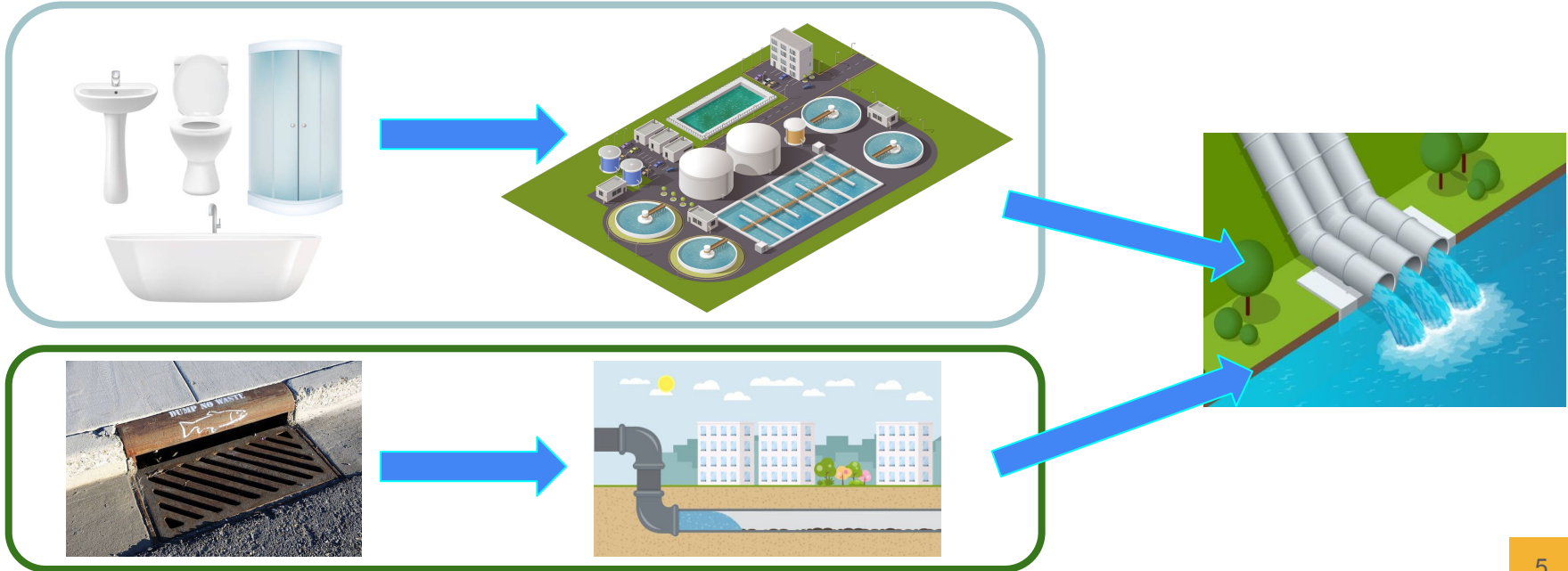
# What are the major watersheds overlapping with Anne Arundel County?

- ★ Tidal & Non-Tidal Patapsco River
- ★ Bodkin Creek
- ★ Magothy River
- ★ Severn River
- ★ South River
- ★ West River
- ★ Rhode River
- ★ Herring Bay
- ★ Upper, Middle, & Little Patuxent River



# Why is stormwater runoff such a big concern in AACo?

All of Anne Arundel County's waterways are considered **impaired** because of excess levels of contaminants, mostly a result of **untreated stormwater runoff**.



# What are the major pollutants of concern?

★ NITROGEN

★ PHOSPHORUS

★ SEDIMENT



# Clean water is more than a goal - it's a responsibility.

Mandated by the **1972 EPA Clean Water Act**, the Chesapeake Bay watershed was issued a Total Maximum Daily Load (aka “pollution diet”), requiring jurisdictions to mitigate harmful pollution in our waterways.

Regulated by the **Maryland Department of the Environment**, Anne Arundel County works and annually reports progress toward local clean water goals as outlined in the Chesapeake Bay TMDL and pollution discharge (NPDES MS4) Permit.

**Visit [AARivers.org](https://aarivers.org) > Chesapeake Bay TMDL**

**Visit [AARivers.org](https://aarivers.org) > NPDES MS4 Permit**



**Maryland**  
Department of  
the Environment

# DPW Bureau of Watershed Protection & Restoration (BWPR)

Anne Arundel County's BWPR is responsible for implementing and supporting cost-effective projects that **offset pollution from stormwater runoff**, resulting in improved water quality our **12 major watersheds**, and ultimately the Chesapeake Bay watershed overall.





# How does BWPR work toward clean water goals?

- ★ Environmental Assessment & Evaluation
- ★ Modeling & Analysis
- ★ Assessment & Planning
- ★ Capital Improvement Projects
- ★ Watershed Restoration Grants for 501c Nonprofits
- ★ Watershed Restoration Contracts for Private Firms
- ★ Community Outreach & Engagement
- ★ Stormwater Infrastructure Management

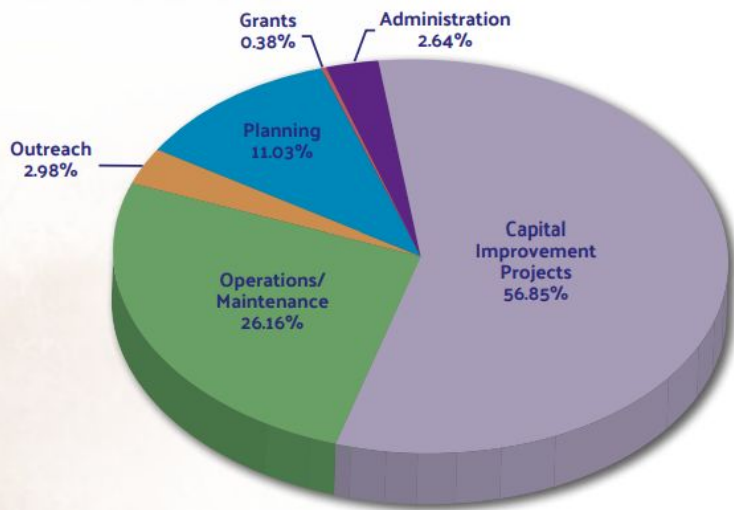


*Keep up with our work on Facebook and Instagram @AAWatershedBureau!*

# Let's talk about the Watershed Protection & Restoration Fee (WPRF)

# How does the County pay for this work?

## FY23 Operating Expenditures



First implemented in 2015, all property owners in Anne Arundel County pay an annual **Watershed Protection & Restoration Fee (WPRF)** via property taxes.

In Fiscal Year 2023 (July 1, 2022-June 30, 2023)...

**Over 50%** of our funding was directly reinvested into Watershed Restoration Capital Improvement Projects.

Visit [AARivers.org](http://AARivers.org) > Watershed Protection & Restoration Fee (WPRF)

# How to look up the WPRF charged to your property

[Watershed Protection & Restoration Fee Viewer](#)

Visit [AARivers.org](http://AARivers.org) >  
Watershed Assessment  
& Planning

Results **My Anne Arundel** Legend

What is my stormwater fee?

[Redacted]

[Go Back](#) [Start Over](#)

Your account number is [Redacted]

Fee Bill Year: FY24  
Fee Amount: \$93.71  
Fee Code: WPRF02  
Code Description: RESIDENTIAL ZONED R1, R2, R5  
Impervious Area: 4164 sq. ft

# Get (tax) credit for your work.



## Step 1. Know what you're being charged.

County residents can use our ArcGIS mapping application to look up the annual Watershed Protection & Restoration Fee (WPRF) charged to their property taxes.



## Step 2. Find a BMP that works for you!

Learn about how to install and maintain a qualifying stormwater Best Management Practice (BMP) on your property in AACo.



## Step 3. Apply for the Stormwater Management Property Tax Credit.

Qualifying improvements installed within 45 days of submitting an application can earn a credit of 10% of installation costs (up to \$10,000).



## Step 4. Apply for the WPRF Credit.

Maintaining a qualifying stormwater BMP on your property can reduce your annual property's WPRF by up to 50%.



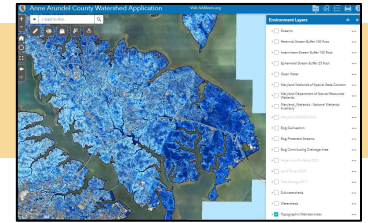
For questions about these tax credit programs, please contact us at 410-222-7536 or [wprf@aacounty.org](mailto:wprf@aacounty.org).

Visit [AARivers.org](http://AARivers.org) > Watershed Protection & Restoration Fee (WPRF)

# Local Resources to Take Action on COMMUNITY-SCALE Stormwater Issues

1. Publicly Accessible Data and Web Tools
2. Storm Drain Markers
3. Pet Waste Outreach Support
4. Community Cleanup Support
5. AACo Watershed Restoration Grant Program

# 1) Publicly Accessible Data and Web Tools



## Datasets:

- septic, sewer, water, and stormwater infrastructure
- stream problem and priority area inventories
- land use and forest cover data

## Web-Based Tools:

- [Watershed Features/Assets Mapping Application](#)
- [Capital Improvement Projects Viewer](#)
- [Stormwater BMP Credit Calculator](#)
- [Restoration Estimator Tool](#)
- [SPSC Sizing Tool](#)
- [DPW Rainfall Monitoring Gauge Data Viewer](#)

**Visit [AARivers.org](https://AARivers.org) > Watershed Assessment & Planning**

## 2) Storm Drain Markers



AACo BWPR can provide you with all necessary training and materials - at no cost to you!

**Visit [AARivers.org](https://www.aarivers.org) > Education & Outreach > Take Action**



# 3) Pet Waste Outreach Support



## What's Up with POO and How it Affects YOU!

- Anne Arundel County waterways are closed to human contact for 48 hours **after EVERY storm** exceeding 1" rainfall due to bacteria pollution.
- A single gram of dog waste can contain **23 million bacteria**.
- 2-3 days of waste from 100 dogs can contribute enough bacteria to close **20 miles** of the Bay to swimming and fishing.
- 48%** of County residents own pets (*10% more than US average*).
- 70%** of County pet owners report letting their dog(s) swim in the Bay.



## How YOU can Help "Stop POollution in it's Tracks"

Take the Pledge to scoop every time there's poop!



Adopt a Pet Waste Station

FAQs & Tips for Bay-Friendly Pet Owners



Visit [AARivers.org](http://AARivers.org) > Education & Outreach > Take Action

## 4) Community Cleanup Support

- **DPW Bureau of Highways and DPW Waste Management Services** can provide dumpsters and trash pickup
- **DPW Bureau of Watershed Protection & Restoration** can provide contractor bags, as well as lend out trash grabbers and high-visibility vests
- **DPW Bureau of Watershed Protection & Restoration and Department of Recreation & Parks** can assist with obtaining permission to work on County property



Visit [AARivers.org](https://www.aarivers.org) > Education & Outreach > Take Action


## 5) AACo Watershed Restoration Grant Program

**ELIGIBLE APPLICANTS:** 501c nonprofit organizations

**FUNDING RANGE:** up to \$300,000


**PROGRAM FOCUS:** implementation of nature-based stormwater Best Management Practices (BMPs), such as...

- Rain Gardens & Bioretentions
- Step-Pool & Regenerative Stormwater Conveyances
- Floodplain Valley Restorations
- Living Shorelines
- and others!



**Anne Arundel County Watershed  
Restoration Grant Program**

FY24 Request for Proposals



Chesapeake Bay Trust | 108 Severn Avenue, Annapolis, MD 21403  
(410) 974 - 2941 | [www.cbtrust.org](http://www.cbtrust.org)

**Visit [AARivers.org](http://AARivers.org) > Watershed Restoration Grant Program**

**This last bit is for EVERYONE!**

# Submit a concern or issue to the County for assistance by dialing 311 or using SeeClickFix

Categories for stormwater concerns:

“Drainage Maintenance”

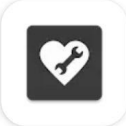
“Drainage Complaint”  
(non-roadway)



**ANNE ARUNDEL COUNTY MARYLAND**  
**311**

Anne Arundel County, MD  
115,505 Requests Resolved All Time

[View Requests](#) [New Request](#)



**SeeClickFix**  
SeeClickFix


4.2 ★  
1K reviews ⓘ

100K+ Downloads

**E**  
Everyone ⓘ

**Install**

Install on phone. More devices available.



Google “AACo SeeClickFix” or visit this link: [https://seeclickfix.com/md\\_anne-arundel](https://seeclickfix.com/md_anne-arundel)

# Get to know your local watershed-focused NGOs!

## ★ All watersheds:

- Anne Arundel Watershed Stewards Academy
- Alliance for the Chesapeake Bay
- Chesapeake Bay Trust
- Scenic Rivers Land Trust

★ **Patapsco:** Anne Arundel Patapsco River Alliance

★ **Magothy:** Magothy River Association

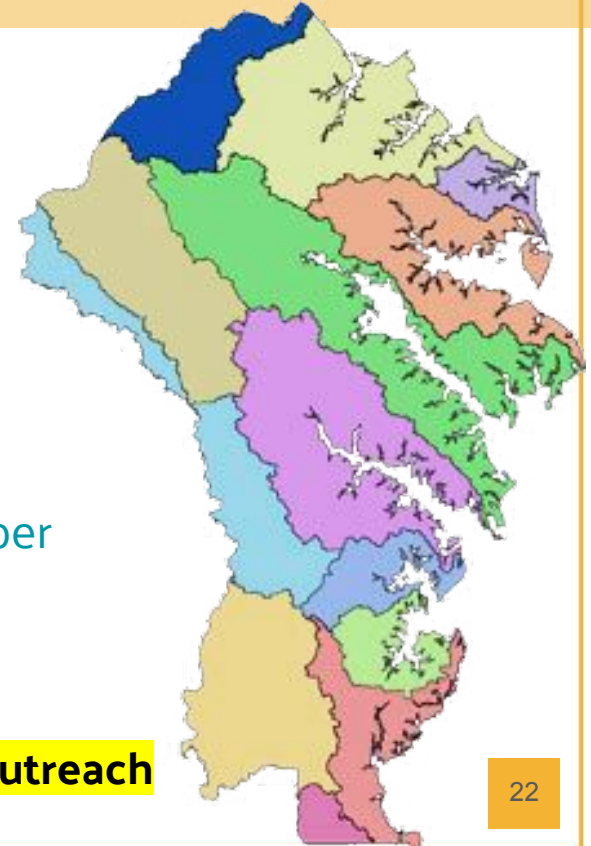
★ **Severn:** Severn River Association & Severn Riverkeeper

★ **South/West/Rhode:** Arundel Rivers Federation

★ **Patuxent:** Patuxent Riverkeeper

★ and many more!

Visit [AARivers.org](https://AARivers.org) > Education & Outreach



# Don't be a stranger!

**Sally Albright, Education & Outreach Coordinator**

**Anne Arundel County DPW Bureau of Watershed Protection & Restoration**

**[pwalbr00@aacounty.org](mailto:pwalbr00@aacounty.org) | 410-222-0136**

**Visit our website at [www.AARivers.org](http://www.AARivers.org)**



**Follow us on Facebook & Instagram [@AAWatershedBureau](#)**