



# **Crownsville Recreation and Parks Subcommittee Report**

Submitted: 06/11/2024  
Prepared by the Anne Arundel County  
Department of Recreation and Parks



## **Table of Contents**

- I. Introduction from the Chairman
- II. The Subcommittee Roster
- III. Subcommittee Charge
- IV. Planning Process
- V. Recommendations
- VI. Summary

Appendix A: Meeting Documents

Appendix B: Recommendations for Other Sub-Committees

### **Introduction from the Chairman- Scott Hymes**

We are excited to submit our Recreation and Parks Subcommittee report on the future of Crownsville Hospital Memorial Park. In this process, we strived to keep the hospital's history in mind as we reviewed public ideas and cultivated new ones. Wellness and Healing are the themes that we chose to guide us through our recommendations.

Our committee is composed of thoughtful, committed, and passionate citizens who are leaders in their communities and have offered many great ideas and worked diligently with positivity to get here. We are grateful for the hard work of the Recreation and Parks staff for their excellent help.

Throughout this process, we have learned more about Crownsville Hospital's early history of inhumane patient treatment, its transformation in the last decades of its operation, and how it became its own tight and positive community of neighbors and families that came together and cared for the patients.

We see the future of Crownsville Hospital Memorial Park as a place for the citizens of Anne Arundel County that offers something for everyone. We do not suggest a huge sports complex but a mix of amenities with programs and services that help people grow, heal, and find peace through self-reflection.

The combination of Programs, Services, Recreational, and Restoration amenities with Natural Features overlaps with the other Subcommittees, and we are pleased to continue working with them and the design team throughout the process.

Thank you,

Scott Hymes

### **The Recreation and Parks Subcommittee Roster**



Chair- Scott Hymes	Sarah Knebel
Robert Agee	Jon Korin
David Beugelmans	Jim Lighthizer
Michael R.E. Carter	Mike Pozdol
Jon Faber	Jawann Wills (Not Pictured)
Jessica Hardy (Not Pictured)	

#### **Anne Arundel County Staff:**

- Erica Jackson Matthews- Deputy Director- AA Co DRP
- Kristina Piergrossi- Administrative Assistant- AA Co DRP



## **Background of Each Participant:**

**Chair-Scott Hymes** - is a music and video producer specializing in Bay Restoration marketing, education, and outreach as the owner of Severn Media. He is the founder and President of the Crownsville Conservancy and worked on the County's acquisition of the land for Valentine Creek Park in Crownsville. He served four years as Vice President of The Severn River Association, helped found the Severn Riverkeeper Program and, served 13 years on the Severn River Commission, worked with the Maryland Department of Natural Resources for 8 years on outreach, marketing, video production, and Bay restoration policy. Scott was raised in Mayo, on the South River, and then spent 20 years as a community leader in Crownsville and now lives with his wife and 2 sons in Severna Park.

**David Beugelmans**- represents Mid-Atlantic Offroad Enthusiasts (MORE) as a member of the non-profit organization's board of directors and trail liaison in Anne Arundel County. Founded in 1992, MORE advocates for multi-use, natural-surface trails throughout the DC-MD-VA area and has built an impressive network of trails and a strong community of trail users that build and maintain trails for free on a volunteer basis. MORE has built and/or maintains over 800 miles of natural-surface trails in over 60 state, county, federal, and city parks, including more than 40 miles at Bacon Ridge and Annapolis Waterworks in Anne Arundel County. MORE is interested in how Crownsville Hospital Memorial Park can serve as a gateway to additional natural surface trails for people from all walks of life, with connections to neighboring trails at Bacon Ridge and Waterworks. MORE is also interested in exploring opportunities for volunteers from the local community to design, build, and maintain trails on the property at no cost to county taxpayers.

**Michael R.E. Carter**, MBA- President, Annapolis Pickleball Club. Pickleball is the fastest-growing sport in the US. It appeals to and is easily played by, all ages. The most critical aspect of pickleball is its social benefits and camaraderie. Most of our 2,000+ members are over 45 years old, and 20% are over 65. Whether they are playing inside or outside, getting out and enjoying physical activity in a social setting is beneficial for everyone's health. In a recent survey, the top answers to why members liked pickleball were the new people they met and the friendships they made.

**Jon Faber**- President of the Anne Arundel County Fair Board since 2021.

**Jessica Hardy**-Anne Arundel County Recreation and Parks, Resource Conservation and Protection. I have been a Park Ranger responsible for patrolling Bacon Ridge Natural Area for five years. I now manage the area as the Superintendent for Resource Conservation and Protection. During this time, I have been interested in creating public access to more natural surface trails while preserving the natural resources in our parkland. I am interested in the Crownsville Hospital Memorial Park project because we

can link Bacon Ridge and the hospital grounds together, creating an even more extensive network of trails for park patrons to enjoy.

**Sarah Knebel** is the executive director of Scenic Rivers Land Trust. Scenic Rivers Land Trust co-holds the conservation easement on 158 acres of the Crownsville Hospital Property with the Maryland Environmental Trust.

**Jon Korin-** is president of Bicycle Advocates for Annapolis & Anne Arundel County (BikeAAA), an all-volunteer 501c3 advocating for safe bicycling for people of all ages and abilities. BikeAAA originated as a Leadership Anne Arundel project in 2013. He also chairs the Anne Arundel County Bicycle Advisory Commission and serves on the Anne Arundel County Transportation Commission. Jon feels a solid connection to the Crownsville Hospital property with BikeAAA's Wheels of Hope program located there. The program collects donated adult and children's bikes. It annually provides hundreds of refurbished bikes, helmets, locks, and lights to people in need, including those in substance recovery, homelessness, crisis, re-entry, and low income. His interest focuses on the property being accessible, welcoming, healing, and inspiring for people of all ages, abilities, and means.

**Jim Lighthizer** started Chesapeake Real Estate Group, LLC in 2004 after spending 16 years at CBRE, where he became Senior Vice President and Partner and was a consistent Top 5 producer. His past institutional landlord clients include RREEF, Ohio Teachers, First Industrial, Opus, Invesco, Cabot, and CalEast/LaSalle Advisors. He also served as a tenant representative leader with the National CB Global Logistics Practice Group. Since starting CREG, Lighthizer has led the company's acquisition and development of many of the highest-profile industrial business parks in the Maryland Region as part of the company's initiative to both own and develop commercial real estate. CREG has acquired, developed, and/or has held ownership in over 20 industrial, office, and retail projects that total over \$400 million in value. The company's partners have included Prudential Real Estate Investors, USAA, The Carlyle Group, EverWest Investors, TA Advisors, Atapco Properties, Osprey Property, Somerset Construction, and Holland Properties. Immediately after starting CREG, Mr. Lighthizer negotiated a few of the region's largest industrial transactions, including representing General Motors in the sale of their Baltimore Van Assembly Plant, which comprised 182 acres and two million square feet of industrial space, to Duke Realty for \$33 million. Mr. Lighthizer previously represented GM, with their acquisition of 80 acres in White Marsh, Maryland, for their 800,000 square-foot Allison Transmission Plant. Lighthizer also acquired and developed a 240-acre, 1.5 million square foot planned business park called Baltimore Crossroads @95.

**Mike Pozdol-** has proven leadership in the business world and his local community. Currently, Mike is the Vice President of Technical Services at Marriott International, where he leads a team responsible for estimating, engineering, project management, standards, sustainability, and business support within the Global Design Strategies

organization, working on projects and initiatives globally. He has demonstrated progressive growth in his role at Marriott over the past 18 years. Before this, he was the Chief Estimator at ONCORE Construction for 8 years. Mike holds an MBA in Finance from the University of Maryland–Robert H. Smith School of Business and a Bachelor of Civil Engineering – Construction Management from the Catholic University of America. Outside of work, he has been heavily involved with Gambrills Odenton Recreation Council (GORC) since 2012. Mike served as Vice President for 3 years before serving as the organization's President for 6 years. Since stepping back at the end of 2021, Mike has continued to assist the organization as a board member and county liaison and consulted on various other efforts with the organization. His role at GORC has led him to serve on the Anne Arundel County Recreation Advisory Board since 2023. In addition, he has served on various committees within Recreation & Parks: Dairy Farm Advisory Committee, Millersville Park Collaboration Committee, and the Crownsville Hospital Memorial Park Advisory Committee. Mike has also served as a commissioner for the Chesapeake Baseball Association since 2015. He has also been involved in many other organizations in various capacities. Mike and his wife Cindy have lived in Odenton since 2003 with their children, Michael and Kelsey.

**Jawann Wills**, LCSW-C-Psychotherapist and Founder of Global Health Options leads with a profound dedication to empowering individuals on their journey toward holistic wellness. With a Master's Degree in Social Work and a specialization in Behavioral Health from the esteemed University of Maryland, Baltimore, Jawann brings a wealth of expertise to the advisory board. His visionary leadership and commitment to fostering rich and meaningful lives make him an invaluable asset to our team.



## **Subcommittee Charge**

**Recreation & Parks Subcommittee Charge** – To provide guidance on the development of recreational and park amenities on CHMP and the use of the property within the Maryland Environmental Trust (MET) conservation easement area.



### **Anne Arundel County's -Department of Recreation and Parks Vision and Mission -**

- Vision- To enrich the lives of all residents of Anne Arundel County.
- Mission - We Create Opportunities to Enjoy Life, Explore Nature, and Restore Health and Well-being.

## **Planning Process**

The Recreation & Parks Subcommittee (hereafter referred to as “RPSC” or “subcommittee”) met from October 2023 to June 2024 to provide guidance on the development of recreational and park amenities at Crownsville Hospital Memorial Park (CHMP) and the use of the property within the Maryland Environmental Trust (MET) conservation areas. The group also reviewed Anne Arundel County’s Department of Recreation and Parks’ Vision and Mission and how these statements and the committee mandate will align with the Subcommittee Recommendations. During this period, the committee had seven in-person meetings and a tour of the Crownsville property. Appendix A details these interactions.

The subcommittee began preliminary programming based on need. The Anne Arundel County Department of Recreation and Parks (DRP) determines needs based on demand, proximity, and equity. Proximity compares the location of an amenity to the population it serves. Park Equity evaluates the degree to which amenities are accessible to populations that are typically underserved. The group was provided with recreational background information to determine the needs, including information about parks within a five-mile radius of the CMHP campus. The five-mile radius was selected because this facility will be a county-wide amenity, and a five-mile radius is the largest catchment area the DRP uses to determine needs and proximity in their five-year masterplan- [The 2022 Land Preservation Recreation and Parks Plan \(LPPRP\)](#). The needs identified in the 2022 LPPRP were reviewed. They were also given a list of needs identified by DRP staff, which included a preschool space and indoor spaces needed for intergenerational recreational programming. (Refer to Appendix A – Meeting 2 for more information)

The third meeting of the subcommittee was probably the most critical meeting. Design Collective was invited to participate and lead a visioning session. This resulted in the RPSC identifying Wellness and Healing as the overall theme. This was further broken down into the following ideas:

- Being present in the moment.
- Highlighting the historical value of the property and the patients.
- Committed action through land conversation, therapeutic recreation, and creating opportunities for well-being.
- Creating opportunities to find happiness, self-exploration, and to improve one's state of mind.
- And lastly, thoughtful programming that will result in diversity and inclusion.

Public engagement was discussed during these meetings. The subcommittee wanted to hear from as many voices as possible during this process. It was determined that the RPSC would not host large public workshops or solicit feedback through a public survey because the primary committee, the Crownsville Advisory Committee, was leading this effort, and that information would be filtered to the subcommittees. The RPSC was provided with the comments received during the larger public community meetings (June 27, 2023, February 13, 2024, and May 16, 2024.) Members of the subcommittee also attended these public meetings. The chairman

attended a private community event where the Crownsville Hospital Site was discussed, and he shared that feedback with the RPSC. The subcommittee wanted to hear from those who had first-hand knowledge of the property and experienced it as a neighbor or an employee of the hospital. This occurred during the fourth meeting when Ms. Marshall, a historian, and Ms. Belt, who lived near and worked on the campus, presented an oral history of their experiences at the Hospital. This first-hand recollection of the campus was informative, educational, and thought-provoking. Their insight was a unique perspective that many had not heard. While not perfect, Crownsville Hospital was a part of the local community. It was more than a place where their parents went to work or a place to house patients. It was where the children in the community played, watched movies, and enjoyed ball games and cookouts. It was a gathering place for those in the neighborhood. The property was self-sustaining, with a farm, shoe repair, and seamstress. The campus was a thriving hub of the Crownsville area of Anne Arundel County. This presentation affirmed the idea that recreational programming should reflect those activities that occurred during the height of the hospital's operations and how important it is to share all facets of the campus's complex history.

Throughout this process, the subcommittee discussed many recreational opportunities. These included active recreation using outdoor fields and indoor spaces, agricultural components, and passive recreation like trails and gardens. Regarding recreational programming, theater arts, ceramics, dance, crafts, gardening clubs, farm education, and exercise were discussed. Some more unique ideas were considered, like jousting, overnight camps, and equestrian riding.

The subcommittee agreed that the campus should not be overdeveloped. Development should be scaled and sensitive to the natural environment so that it does not feel like a large outdoor sports complex like Bachman or an office park and leaves open space for quiet reflection and a park-like environment.

The subcommittee's process was one of open discussion between the members. Each member had an equal voice in the decision-making. Several group members also participated with other CHMP subcommittees or county stakeholder groups. In this role, they served as conduits for information. The group's experience and expertise fostered lively conversation on many topics, such as the site's history, mental health and well-being, impervious coverage, transportation, stormwater management, accessibility, sports, agriculture, and the care and protection of the natural environment. The County's staff would only intervene to inform the committee of county policies and procedures, provide requested information, and help moderate the discussion. The subcommittee embodied the idea that a stakeholder is a project champion and works to develop an outcome that will serve the most, most of the time.



## **Recommendations**

The property should be transformational and focus on the health and wellness of those who visit the campus, and this idea remains the overall guide for the recommendations. The Recreation and Parks Subcommittee has met, listened, and learned from people with deep connections to Crownsville Hospital and attended public meetings to hear from county residents to develop the recommendations presented in this report. The campus needs to have a sense of and be a part of the community. The site should be welcoming and accessible to all ages and abilities. Resources, programming, and amenities should be implemented to result in diversity, equity, and inclusivity. The Campus should be a national model of healing- community healing, historical healing, and self-healing. This campus should be converted from a place where people did not want to come to a destination for all.

Activities, programming, and amenities developed on this site should improve the health and wellness of those who visit the campus. Park spaces should allow people to self-reflect, rest, and restore themselves. The property should be a place for social gatherings, allowing residents to connect regardless of age, ability, or economic status.

The site's historical significance was an ongoing topic of discussion. The Recreation and Parks Subcommittee felt that it was essential to the park's development and that history should be highlighted and shared in many ways. While the historical subcommittee is charged with the campus's storytelling, the property should be developed so that people can better understand it through storyboards, exploration, educational programming, and re-creation of spaces and experiences that would have been formally on the campus. This includes the agricultural and recreational components of the property.

A transportation plan that includes various means of transportation for visitors to reach the campus should be developed. This should include public transportation, shared-use pathways and sidewalks, ride-share drop-off/pick-up locations, and connections to the planned trails system. Once people arrive on the campus, they should be able to navigate it with minimal driving. This would be achieved by including natural and paved pathways, bike lanes, and surfaces to allow adaptive vehicles to traverse the campus. This idea of multimodal transportation options should reduce the amount of parking needed on campus and reduce vehicles on the road traveling to and from the campus.

The group was very sensitive to the idea that the property should not be overdeveloped. This included not increasing the impervious coverage on-site, improving stormwater management, reusing the buildings if possible, shared use of spaces, and having designated active and passive zones on the property. Amenities should be organized logically, considering the other activities, environmental features, and present and planned resources. Development of the campus should be mindful of the environment, and preserving green space on the property. During the development process, intentional planning for the visitors to connect with the natural environment should be determined. There should also be plans for the care and preservation of the natural environment should be included.

The committee has some concerns about the site's capacity for visitors. The committee believes that the spray fields need to be removed to utilize the property best and the option to convert the site to public sewer should be pursued. While there is a plan that focuses on what buildings should be removed, there does not seem to be a plan for preserving those that should remain. This idea of capacity was never resolved by this committee but referred to infrastructure for review. They understand this is not an easy problem to overcome.

(Recommendations for other committees are included in this report under Appendix B.)

### **Proposed Themes and Goals**

The Recreation & Parks Subcommittee adopted these overarching themes to guide our Goals, Strategies, and Recommendations:

<b>THEMES</b>	
1. Honor and respect the history of the site	
2. Ensure amenities are welcoming, accessible, and Inclusive for all ages, abilities, backgrounds, and means	
3. Provide opportunities for restoration, well-being, contemplation, present awareness, reflection, recreation, and community	
4. Ensure preservation, exploration, and access to natural features	
<b>GOALS</b>	
Goals to categorize the Strategies and Recommendations	
1. Recreation Amenities	
2. Restorative Amenities	
3. Natural Preservation, Access and Features	
4. Programming & Services	



## VI. Final Recommendations

Category	Strategy	Goal	Priority
<b>1. Recreational Amenities</b>			
1.1	Provide a Community Center or multiple indoor spaces that can house various recreational programs and activities. The spaces should include a gym, court games (basketball, pickleball, tennis, racquetball), and flexible meeting spaces that can be used for workshops, crafts, and fitness classes. This space should function similarly to how the Campenella Building was historically used for recreational activities. The historical significance of Campenella should be shared by recreation and modernization of the space or with the use of storyboards at its location on the campus.	1. Recreation	High
1.2	Provide outdoor athletic areas at appropriate locations within the campus footprint and within site capacity constraints. These outdoor areas should include a maximum of four (4) multi-purpose fields, a track and field complex, and (2) baseball diamonds. Decisions about field lights and turf surfaces will be made during the design. Outdoor court should be provided and include one (1) full-size basketball court, one (1) full-size tennis court, one(1) blended tennis/pickleball court, and two (2) standalone pickleball courts as two courts should fit in the same size space as a tennis court.	1. Recreation	High
1.3	Provide an ADA-compatible paved shared use path network within the site that provides access to key points of interest, amenities, facilities and natural areas as well as the planned South Shore Trail.	1. Recreation	High
1.4	Provide a multi-use, sustainable natural surface trail network open in whole or in part to hikers, bikers, adaptive device users, and equestrians. This system shall include connections to local attractors such as Bacon Ridge, South Shore Trail and Annapolis Waterworks Park	1. Recreation	High
1.5	Include a painted children's bicycle safety playground and a paved pump track.	1. Recreation	Medium
1.6	Where possible create various active and passive recreational zones on this campus. This would include clustering the ball fields and more active recreational opportunities in certain sections of the park.	1. Recreation	Medium
<b>2. Restorative Amenities</b>			
2.1	Provide diverse park attractions like adaptive playgrounds, observation areas, small outdoor amphitheater, gardens and meadows, and outdoor gathering spaces such as pavilions and gazebos.	2. Restore	High
2.2	To help educate visitors, provide storyboards and audible displays about the site's history and facilities throughout the campus at visible and accessible locations. Interactive benches and sculptures should also be considered.	2. Restore	High
2.3	Public access to the cemetery and the memorial should remain.	2. Restore	High
2.4	Provide water features like ponds and other natural and artificial objects that allow visitors to see their reflections to gain a deeper understanding of self and to encourage self-healing/meditation.	2. Restore	Medium
2.5	The site should strive to exceed ADA compliance in addressing physical limitations, including those with visual and hearing limitations. The park should be accessible to all and designed as a multigenerational campus that people of various abilities and disabilities can enjoy.	2. Restore	High
2.6	Provide sensory experiences where appropriate. Consideration should be given to those with special needs and mental illness.	2. Restore	High
2.7	Campus visitors should be able to access the site by various means of transportation, including transit, walking, biking, and other adaptive mobility devices.	2. Restore	High
<b>3. Natural Features</b>			
3.1	Landscaping should be non-invasive species throughout the campus. Native plant species should be prioritized over other species in all other areas except in agricultural, picnic, and active recreational areas.	3. Nature	High
3.2	All stormwater from impervious surfaces should be managed on-site via smaller BMPs such as step pools, rain gardens, bioswales, rain barrels, etc, using regenerative design. Larger BMPs, such as extended detention ponds, should be used as a last option. More natural-looking and heavily landscaped options should be the first option. If possible the SWM should exceed the minimum requirements.	3. Nature	Medium

## VI. Final Recommendations

3.3	Vegetative management plans to manage invasive plant species on site shall be developed and implemented. This plan should include ongoing operational procedures.	3. Nature	High
3.4	The redevelopment of the property shall include the preservation and care of natural habitats for animal species on the site.	3. Nature	High
3.5	Educational signage about the conservation easement, the natural history and ecology of the forest, human health benefits of the forest, pollinator gardens, stormwater management shall be installed as the campus is developed.	3. Nature	High
3.6	Pollinator gardens, meditative and sensory gardens, ponds, and water features should be included to allow visitors the opportunity for self-reflection and contemplation as well as to connect with nature.	3. Nature	Medium
<b>4. Programs &amp; Services</b>			
4.1	Programming should be culturally diverse.	4. Programs	High
4.2	Programming should be provided for all ages, including youth, adults, and seniors .	4. Programs	High
	Cost of programming should not be a barrier to access.	4. Programs	High
4.3	Recreational programming should be diverse and include a wide variety of activities. These can include, but are not limited to, summer camps, camping, childcare, theater arts, arts and crafts, wellness walks, nature hikes, gardening clubs, fitness programs, recreational classes, individual and organized sports.	4. Programs	Medium
4.4	The opportunity to provide onsite Pre-K and School-age aftercare should be evaluated for inclusion on the property.	4. Programs	Medium
4.5	Park programming should include horticultural, habitat, and other nature programs for all ages.	4. Programs	High
4.6	Provide opportunities for agricultural recreation and education, such as demonstrations, community gardens (vegetables and plants), livestock interactions, and workshops on sustainable practices. If possible, restore the barn and create a farmette with historical accuracy.	4. Programs	High

## **Summary by County Department of Recreation and Parks Staff**

The Crownsville Advisory Committee, specifically the Recreation and Parks Subcommittee, has worked over the last eight months to develop recreational recommendations for the future development of the Crownsville Hospital Campus. The group is very diverse in its makeup as it includes land developers, former and current municipal employees, agricultural enthusiasts, a licensed therapist, environmentalists, and leaders of sports organizations. Members were asked to have open minds, be champions for the project, and make recommendations that would serve the most people most of the time. The committee members provided their vast insight and knowledge to the process.

This subcommittee had the overwhelming task of trying to find a balance between maximizing recreational opportunities, land conversation, and development while trying to preserve the site's history. Early in the process, the theme of wellness and healing was developed and this concept helped to prioritize and formalize ideas. They wanted their ideas to fit cohesively into the other groups' work. This idea forced them to think outside of their silo, and it also encouraged them to think on a bigger scale vs the outcome of individual desires. The group wants to be intentional about diversity and inclusion.

The recommendations in this report document the goals and themes developed by this subcommittee. Some of the ideas presented in this report may impact infrastructure and planning efforts beyond the boundaries of the Crownsville Hospital Memorial Park Campus and will require additional efforts through specific long-range planning and capital development processes. While those off-campus efforts will be developed independently, they should be informed of the spirit of this document.

The subcommittee has developed recommendations that achieve their mandate and align with the mission and values of the Anne Arundel County Department of Recreation. They have developed something that will enrich the lives of the residents of Anne Arundel County while creating opportunities to enjoy life, explore nature, and restore health and well-being.



**CHMP R&P Subcommittee**  
**Appendix A**  
**Meeting Timeline**  
**Document List**

## CHMP Recreation and Parks Subcommittee Meeting Timeline and Documents

Interaction	Date	Document Reviewed	Summary of Interaction
Meeting #1	10/24/23	Powerpoint includes Agenda Building Inventory Crownsville Map Meeting Notes	Reviewed the project, role of a stakeholder and the process for property development
Site Visit - Tour of Hospital Campus	11/17/23	None	Tour of the Hospital Campus
Meeting #2	12/6/23	Agenda DPW / Design Collective Presentation Masterplans and DRP Staff Feedback Map and List of Parks within a 5 radius Easement Language * Meeting Notes	Reviewed Background Information, Design Collective Presentation
Meeting #3	1/10/24	Meeting Notes Agenda Shared Tennis and Pickleball Courts	Visioning Session Facilitated by Design Collective
Recreational Subcommittee Update	01/29/23	Power Point	To update the larger committee on progress
Meeting #4	02/21/24	Agenda Community Presentation Concept Trails Presentation Meeting Notes	Two Presentations: (1) from a representative who worked at Crownsville Hospital and (2) by the Trails Subcommittee
Meeting #5	03/13/24	Agenda Meeting Notes Public Workshop Comments 02/13/24* Impervious Coverage Map Final Structural Report*	Begin Working on Draft Recommendations
Meeting #6	05/21/24	Agenda Meeting Notes	Work on Draft Recommendations
Meeting #7	06/06/2024	Agenda Meeting Notes	Finalize Draft Recommendations
		* Document not included, the design consultant should have the final version for public use	

**CHMP R&P Subcommittee**  
**Appendix A1**  
**Meeting #1 Documents**

# Crownsville Hospital Memorial Park – Recreation and Parks Subcommittee Stakeholders Meeting #1

Tuesday October 24, 2023

6pm to 8pm

1 Harry S. Truman Parkway

# Meeting Agenda

- Welcome- Jessica Leys, Director DRP
- Introductions - Scott Hymes, Chairman
- Goals for this Meeting -Scott Hymes, Chairman
- Role of Stakeholder - Erica Matthews, DRP
- Project Background -Erica Matthews, DRP
- Open Discussion - Scott Hymes, Chairman
- Recap -Scott Hymes, Chairman
- Adjourn



# Introductions



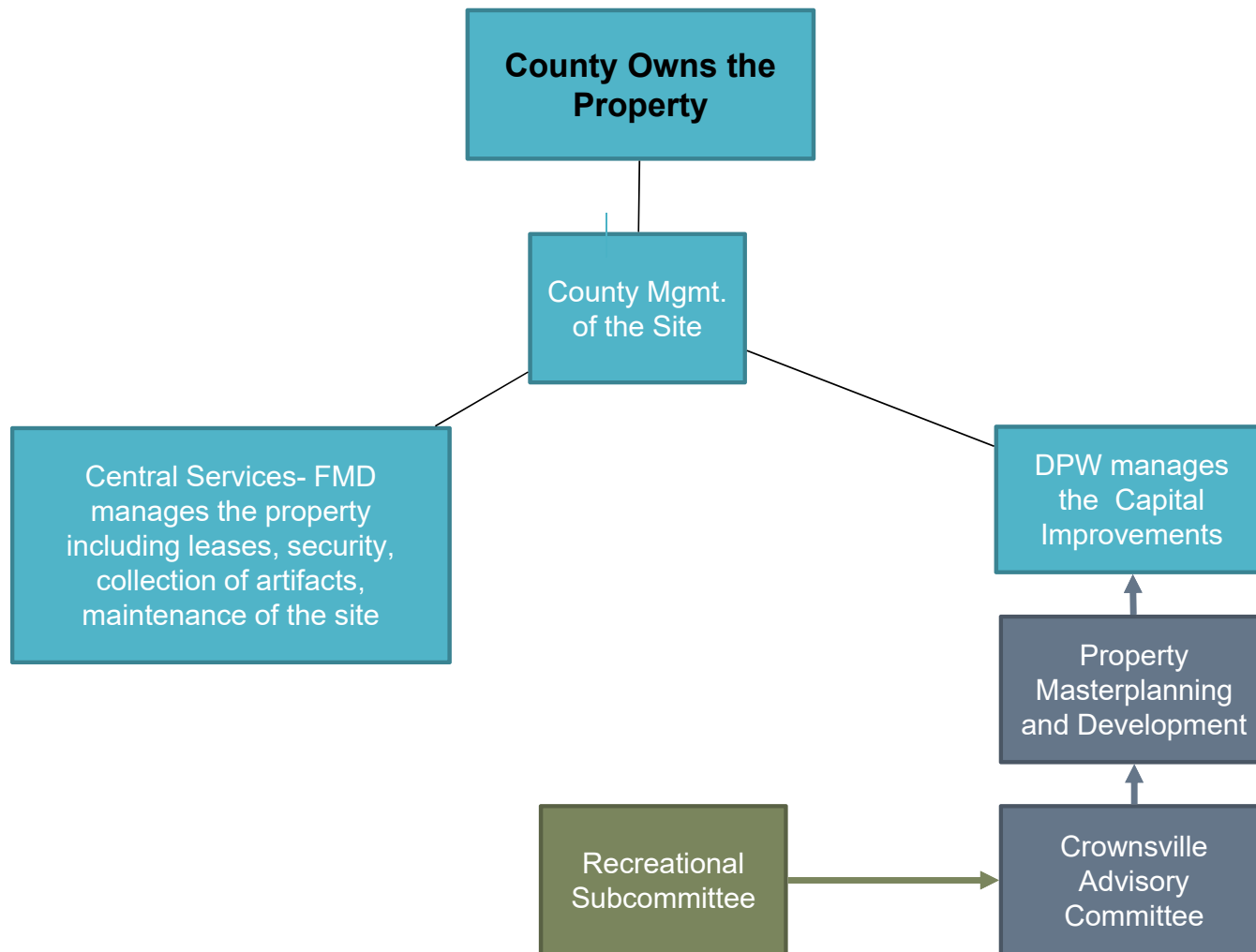
# Goals for Today

1. To understand the process
2. To have a better understanding of the CHMP's background
3. To begin brainstorming on how this group will help to develop overall project recreational components.

# Role of a Stakeholder Group

- Provide input during the decision making process
- Provide insight and knowledge
- Be a champion for the project
- Collaboration, seeking solutions, and compromise
- Consideration is given for the greater good
- Compile feedback from the community and present it to the group for recommendation.
- Works toward a common goal
- Synergy- the parts as a whole should result in a greater outcome than the individual parts





# Committee Role and Responsibility

- Executive Order #61 CHMP Advisory Committee–To provide oversight and input into the development of CHMP and coordination with the four subcommittees.
- There are four themes for the Campus – Cultural History, Health and Wellness, Infrastructure, and **Recreation and Parks**
- Committee Mandate Recreation & Parks– To provide guidance on the development of recreational and park amenities on CHMP and the use of the property within the Maryland Environmental Trust (MET) conservation easement area.
- Participate on the overall Campus masterplan committee. The technical review committee has met to discuss the proposal. DPW will need to secure the consulting services. This will help define the project's goals and hopefully result in preliminary space analysis for all County agencies. The goal is to integrate passive and active recreational opportunities into the park.

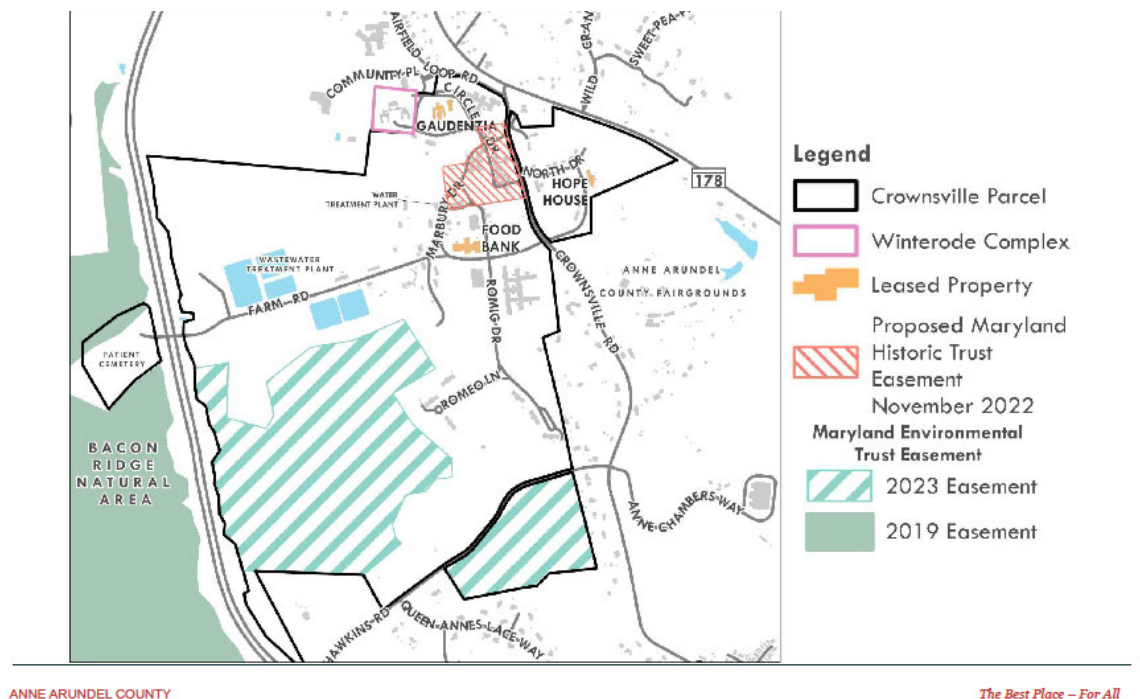
# Property Background

- Former home of the Crownsville State Hospital
- Addresses: 41,45 Community Place, 1520 Crownsville Rd, Crownsville 21032
- The County acquired the property in December 2022, some of the property remains with the state
- Current Budget for the entire project is \$30M
- Full Parcel: Approximately 500 acres containing 76 structures
  - Maryland Environmental Trust Easement: Approximately 160 acres
  - Maryland Historic Trust Easement: Approximately 20 acres- surrounding the core historic building complex comprised of 10 structures, all property development will be reviewed which limits on what we can do for these structures
- Water Utilities: Water treatment facility, drilled wells, two 250,000 gallon elevated water storage tanks, and a distribution network
- Wastewater Utilities: Wastewater treatment facility and collection network

# Property Background (continued)

**Easements:** There is an environmental easement and a historical easement (shown on the map); both restrict development

**Current use:** Health and Human Services, Utilities that serve the region, Rec use, Cemetery use.



ANNE ARUNDEL COUNTY

The Best Place - For All

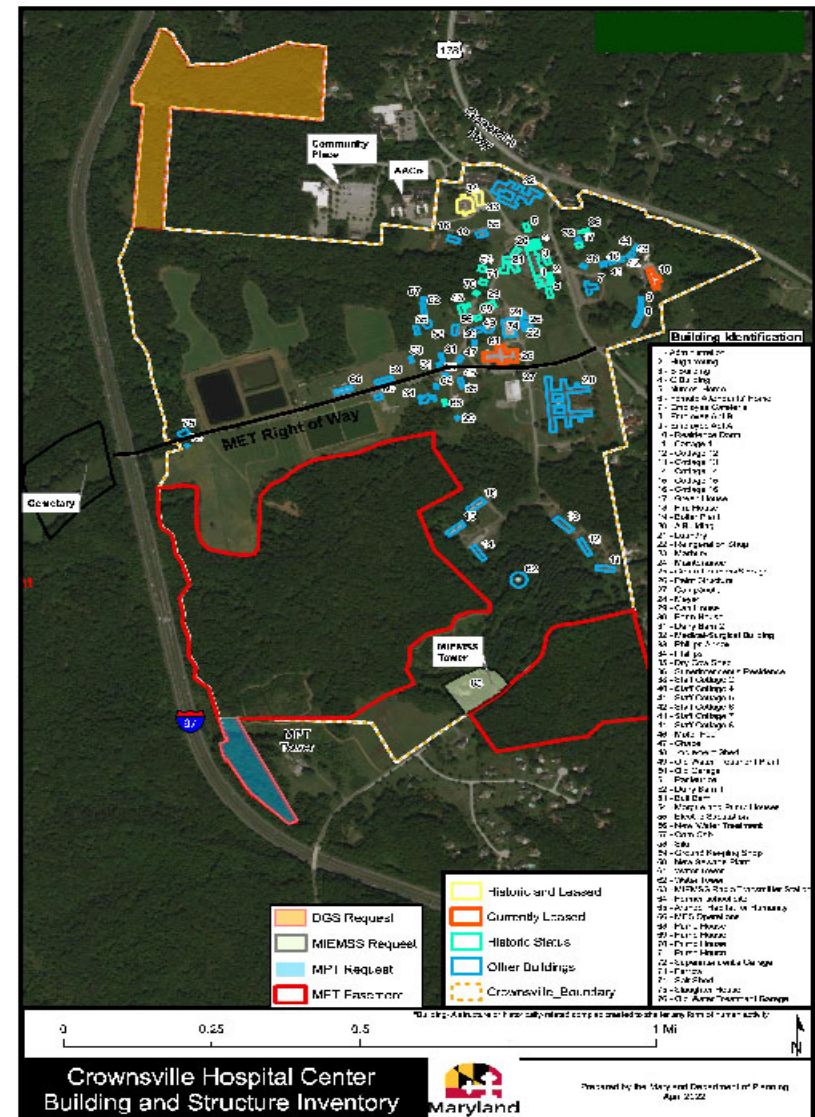
# Current work underway

## Capital Contract Names:

- C452122-Crownsville Hospital Structure Condition Assessment
- P588400 - Crownsville Memorial Park - Recreation & Parks
  - 01- Crownsville Memorial Park Master Planning
  - 02-Crownsville Patient Cemetery Memorial

## Other Interested Parties and Groups:

- Friends of the Cemetery – Oral History, Say My Name
- Trails Committee- Trail connections from Bacon Ridge and other County Trail Segments to connect to the CMHP
- Scenic River Land Trust (SRLT)- 1<sup>st</sup> Day Hike





# Questions



# Open Discussion

1. Begin to brainstorm on what the committee would like to see developed in the park.
2. Create a framework for this committee to complete public engagement that is not in conflict or disruptive to the overall master planning process.
3. Areas of concerns? What additional information does the group need?
4. Establish a Regular Meeting Schedule

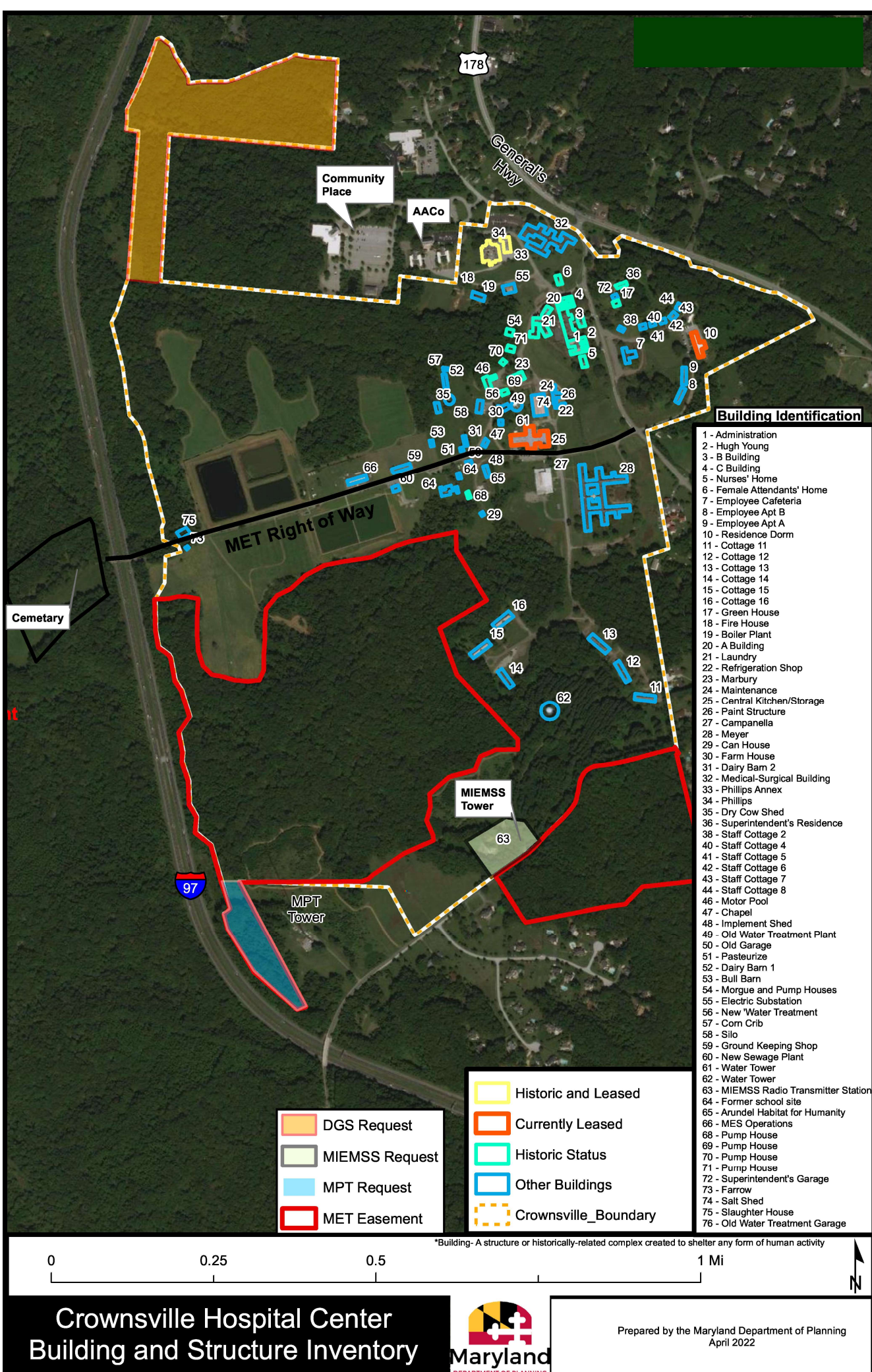


# Where does this leave us?

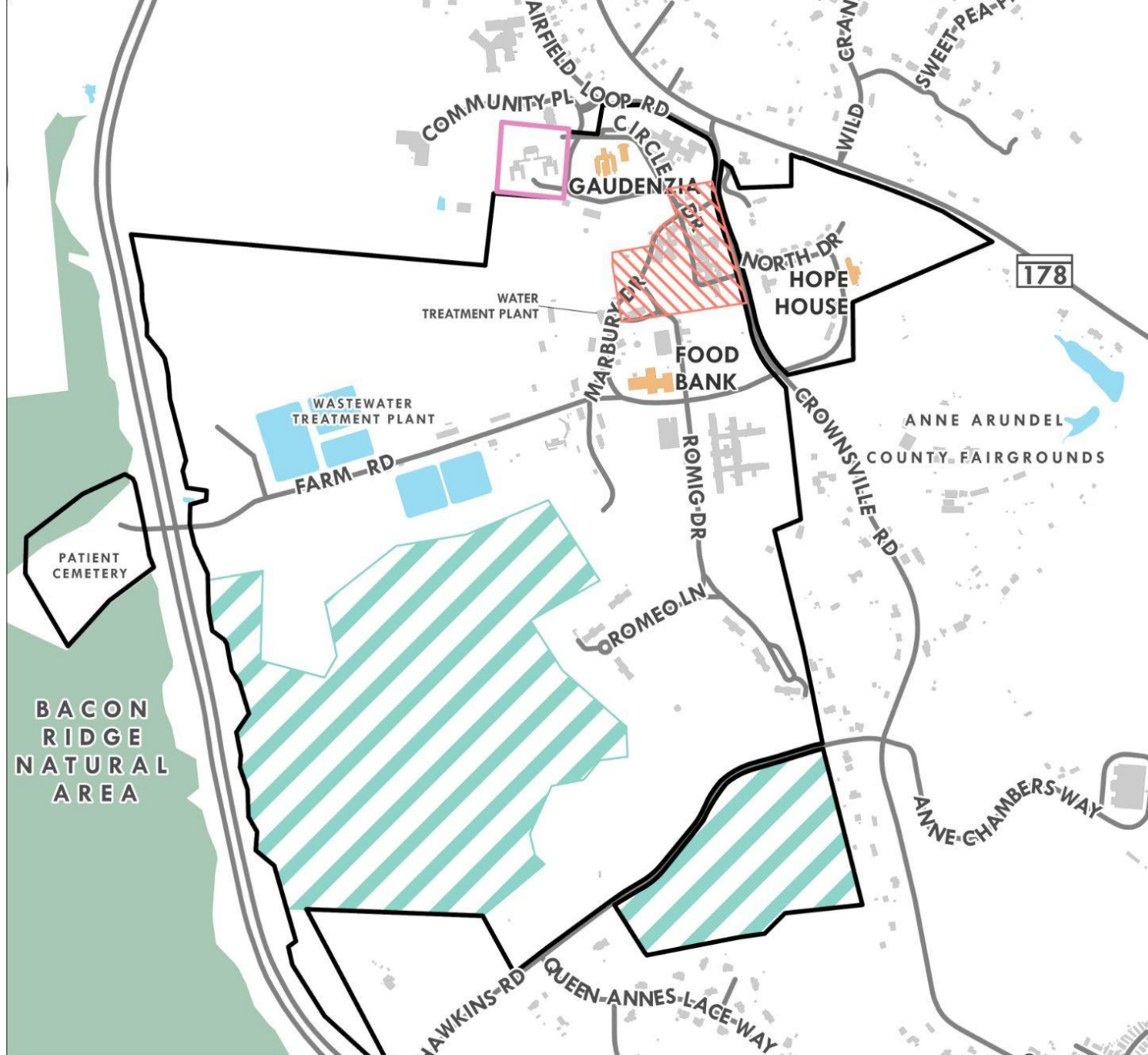












## Legend

-  Crownsville Parcel
-  Winterode Complex
-  Leased Property
-  Proposed Maryland Historic Trust Easement  
November 2022
-  Maryland Environmental Trust Easement  
2023 Easement
-  2019 Easement



STEWART PITTMAN COUNTY EXECUTIVE  
JESSICA LEYS, DIRECTOR  
1 HARRY S. TRUMAN PARKWAY  
ANNAPOLIS, MD 21401  
410-222-7867



## **Crownsville Hospital Memorial Park**

### **R&P Subcommittee-Meeting #1 Minutes**

24 October 2023 / 6:00 PM / R&P Conference Room

#### **Attendees**

Scott Hymes (Chairman), Mike Podzol, Dave Beugelmans, Jim Lighthizer, Sarah Knebel, Jon Korin, Michael Carter, Jawan Wills, Jessica Hardy, Gene Deems, Bob Agee

County Staff: Jessica Leys, Erica Matthews, Kristina Piergrossi

Not Present: Tonya Montgomery, John Faber

- I. **Call to Order:** The meeting was called to order at 6:02 pm.
- II. **Welcome-**Jessica Leys, Director of Recreation and Parks
  - A. The Department of Recreation began the meeting with a welcome from Jessica Leys, Director, Anne Arundel County Recreation and Parks.
  - B. Jessica Leys spoke to the intentional naming of CHMP as a healing place for the mental well-being of the county.
- III. **Introductions-**Scott Hymes, Chairman, R&P Subcommittee
  - A. As this was the first meeting, committee members were asked to introduce themselves and state why they were interested in the project.
- IV. **Purpose of the committee-** -Erica Matthews
  - A. Role of R&P Subcommittee- To guide developing recreational and park amenities on CHMP and the use of property in the Maryland Environmental Trust (MET) conservation easement area.
  - B. Project Background- Erica Mathews outlined the project's Organization Chart, and the committee's role and responsibilities, and provided the background on the property itself. She suggested viewing the CE's vision of Crownsville Hospital. Erica also reviewed the steps to public engagement, reiterating that the best project will hear the voices of many and meet the needs of most. Health and Human Services uses the property, recreational organizations (use the existing multipurpose fields), and SRLT (annual hike). A cemetery is on the property, and a memorial is underway. A group of volunteers hosts the annual "Say My Name" event at the cemetery and routine events to clean the cemetery. The property has two easements that will need to be considered during development. A separate committee is working on trail connections near the campus, which will

be discussed in that group. There are several projects underway onsite that include building assessments and overall campus masterplans.

## **V. Open Discussion**

- A. Brainstorming yielded some great ideas for using the space, ie, zipline, ropes course, BMX, pavilions and picnic areas, meditation garden, and possibly a dog park. Cell towers nearby could provide free internet, enable educational walking tours, and digital signage for the park and the region.
- B. A tour of the property would be a good place to start. Additionally, establishing scale drawings for people to mark up to visualize land constraints would be useful in decision-making about suggested park features.
- C. Active and passive recreation were discussed as they relate to what activities are permissible in what areas.
- D. Also discussed were the easements on the property and what areas can be developed. Additionally, it was determined that the final Building assessment would be very helpful.
- E. What is the status of the assessment report?
- F. There was a discussion about the schedule and timeframes to complete the stakeholder outreach and how that aligned with the overall master plan process.
- G. From a procedural standpoint, it was determined that the meeting would be in person once a month with a Zoom link. Working groups will be formed for specific tasks, reporting as needed.
- H. The next meeting will be a tour of Campus CH-information to follow.

## **VI. Action Items**

- A. Scott Hymes to send a YouTube link of drone footage of the area
- B. Erica Matthews to post a link to the June Town Hall Meeting with the CE
- C. Erica Matthews to Outline of Easement Language, i.e., what is allowed, and add easement language to the project folder



**CHMP R&P Subcommittee**  
**Appendix A2**  
**Meeting #2 Documents**



STEUART PITTMAN, COUNTY EXECUTIVE  
JESSICA LEYS, DIRECTOR  
RECREATION AND PARKS  
1 HARRY S. TRUMAN PKWY  
ANNAPOLIS, MD 21401  
AACOUNTY.ORG/RECPARKS



## Crownsville Hospital Memorial Park- Recreation & Parks Sub-Committee

Meeting Agenda- Wednesday, December 6, 2023

- I. Call to order
  - II. Review and approval of minutes from the last meeting
  - III. Old Business
    - Tour of Campus
    - Drone Footage
    - Documents that have been posted to the shared drive:
      - Easement Language
      - 5 Mile Study-Preliminary needs
  - IV. New business
    - a. Presentation from DPW and Design Collective
  - V. Open Discussion
  - VI. Adjournment
-





# CROWNSVILLE HOSPITAL MEMORIAL PARK

Committee Meeting  
December 6, 2023

Design  
Collective

carmichael associates

**RK&K**

EHT||TRACERIES  
HISTORIC PRESERVATION





# AGENDA

---

- 1. PROJECT SCHEDULE & SCOPE**
- 2. PUBLIC ENGAGEMENT OVERVIEW**
- 3. CONSULTANTS INTRODUCTION & SCOPE**

*Design Collective*

*Carmichael Associates*

*RK&K*

*EHT Traceries*

*Costcon*

- 4. WORK TO DATE & NEXT STEPS**





# A PHASED & PROGRESSIVE APPROACH

---

*Our process aims to build consensus in a step-by-step fashion among county departments and offices, elected officials, a steering committee(s), nearby residents, nonprofits, historic preservation advocates, MHT, current users and tenants, and other important stakeholders.*

**Our team encourages a meaningful, inclusive, and robust stakeholder, community, and public engagement approach. Our master planning process consists of three (3) primary phases, including a variety of engagement opportunities throughout each phase:**

## **Phase One:**

*Data Collection, Assessment,  
and Existing Conditions Analysis*

## **Phase Two:**

*Visioning, Planning, Evaluation of Options, and Draft Plan*

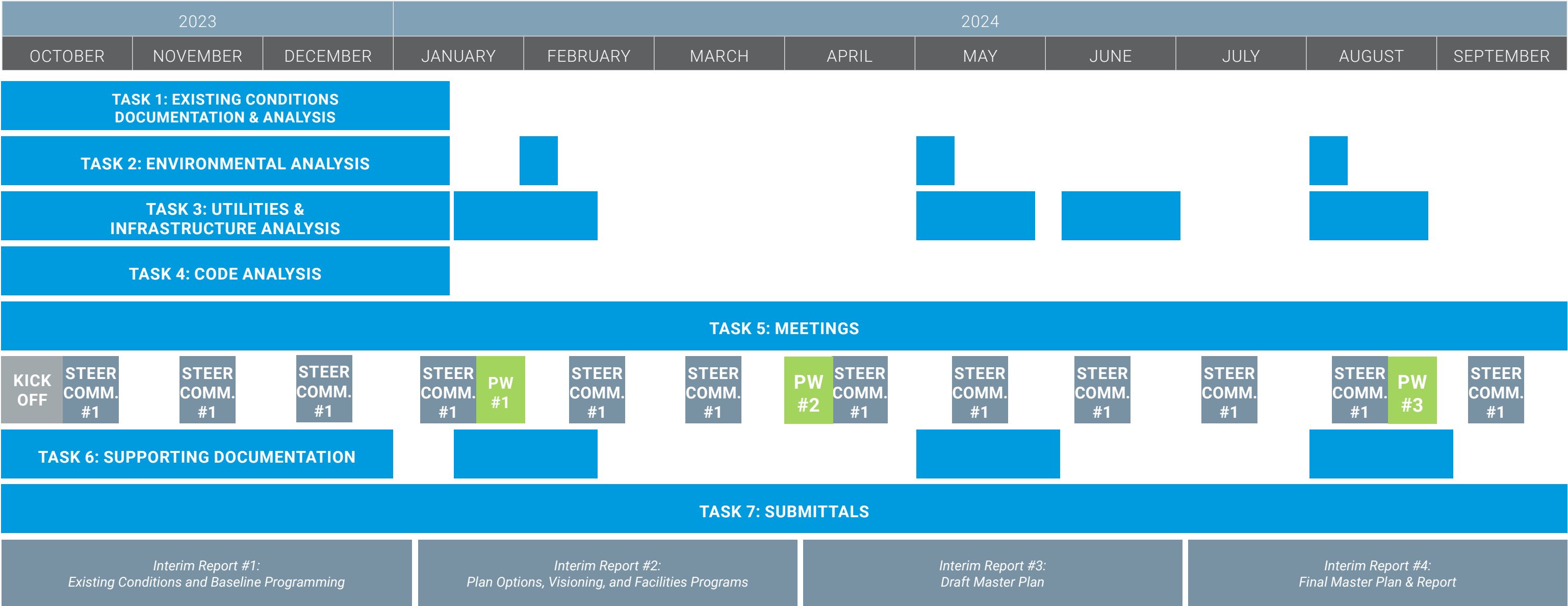
## **Phase Three:**

*Final Master Plan and Implementation Strategy*

- **Task One:** Existing Conditions
- **Task Two:** Environmental Analysis
- **Task Three:** Utilities and Infrastructure
- **Task Four:** Code Analysis
- **Task Five:** Meetings
- **Task Six:** Supporting Documentation
- **Task Seven:** Submittals



# PROJECT SCHEDULE





# PUBLIC ENGAGEMENT OVERVIEW

## PUBLIC WORKSHOP # 1 INTRODUCTION / VISIONING ~ MID JANUARY [TBD BY COUNTY]

- Format: Presentation, Round Tables and/or Board Stations
- Tools: Existing Conditions site map, diagrams, and photos; precedent example images; sticky notes, postcards, pens, etc.



## PUBLIC WORKSHOP # 2 PLAN OPTIONS ~ APRIL [TBD]

- Format: Presentation and Board Stations
- Tools: Existing Conditions site map, diagrams, and photos; Plan Options (sketches, massing models, building test fits/floor plans, and/or similar); precedent example images; polls or survey; sticky notes, pens, etc.



## PUBLIC WORKSHOP # 3 DRAFT MASTER PLAN REPORT ~ AUGUST [TBD]

- Format: Open House
- Tools: Existing Conditions site map, diagrams, and photos; Preferred Plan Options (renderings, building floor plans, elevations, or similar); precedent example images; Analysis Findings; Implementation Strategy; Draft Report; sticky notes, pens, etc.







## PROJECT TEAM

---





## MANAGEMENT

Principal-in-Charge & Lead Planner  
**Matt D'Amico, PLA, ASLA**  
*Design Collective, Inc.*

Project Manager  
**Cecily Bedwell, AICP, LEED AP BD+C**  
*Design Collective, Inc.*

## DESIGN TEAM

Project Architect:  
Health & Wellness  
**Matt Herbert, AIA, LEED AP**  
*Design Collective, Inc.*

Project Architect: Cultural  
**Scott Vieth, AIA, LEED AP BD+C**  
*Design Collective, Inc.*

Facility Programming &  
Space Planning  
**Lou Ghitman, CID**  
*Design Collective, Inc.*

Project Planner  
**MacKenzie Twardus, PLA**  
*Design Collective, Inc.*

Project Landscape Architect  
**Brian Reetz, PLA, ASLA**  
*Design Collective, Inc.*

## SUBCONSULTANT TEAM

Parks & Recreation Planner  
**Dennis Carmichael, FASLA, LEED AP**  
*Carmichael Associates*

Manager  
**Chris Krupinski, PE**  
*RK&K*

Principal  
**Laura Hughes**  
*EHT Traceries*

Project Manager  
**Robert Filippi, PLA**  
*RK&K*

Senior Project Manager  
**Kim Daileader**  
*EHT Traceries*

Transportation & Traffic Engineer  
**Marcel Klik, PE, PTOE**  
*RK&K*

Cultural Resource Specialist  
**Emily Pelesky**  
*EHT Traceries*

Environmental Engineer  
**Greg O'Hare**  
*RK&K*

Water, Sewer, Utilities Engineer  
**John Moore, PE**  
*RK&K*



**CROWNSVILLE HOSPITAL MEMORIAL PARK**  
Anne Arundel County

## Design Collective

### FIRM OVERVIEW

*Design Collective is a 100% employee-owned multi-disciplinary design firm headquartered in Baltimore, Maryland. The firm's practice includes projects in over 30 states, and in China, South Africa, and India. Design Collective offers design expertise in planning, architecture, landscape architecture, interior design and graphic design. For many of our clients, these design disciplines coalesce to create design solutions.*

**Years in Business: 44**

**Employees: 80+**

**Office Location: Baltimore, MD & Chicago, IL**

#### Core Competencies

- Planning
- Urban Design
- Streetscape Design
- Architecture
- Landscape Architecture
- Signage, Graphics, and Branding

#### Award Winning Projects and Places

- 350+ Design Awards

**Website: [www.designcollective.com](http://www.designcollective.com)**

**Design  
Collective**





**CROWNSVILLE HOSPITAL MEMORIAL PARK**  
Anne Arundel County

## Design Collective

## PROJECT SCOPE

### Task One: Existing Conditions Documentation and Analysis

- *Tour the site and buildings*
- *Review background information*
- *Research precedents and best practices*
- *Coordinate with subconsultants, client, and agencies*
- *Compile and/or prepare conceptual building floor plans and/or elevations for key buildings, for proposed reuse test fits (see below)*

### Task Four: Code Analysis

- *Review county zoning code*
- *Document current accessibility conditions and problems*
- *Document and understand any current code violations that may suggest a major cost or impediment to renovation and outline findings*
- *Meet with key permitting, zoning, and Public Works County personnel*

### Task Five: Meetings

- *Meet with Key Stakeholders, Committees, and Subcommittees*
- *Participate in and help to facilitate Public Workshops*

### Task Seven: Submittals

- *Review and format Existing Conditions, Options, Draft, and Final Reports (4 Submittals)*
- *Create a conceptual and illustrative site plan and diagrams*
- *Study new facility plans, building reuse floor plans, and renovation needs*
- *Direct and review cost estimate*





**CROWNSVILLE HOSPITAL MEMORIAL PARK**  
Anne Arundel County

## carmichael associates

### FIRM OVERVIEW

*Dennis Carmichael is the founder and sole practitioner of Carmichael Associates, an intentional firm of one, allowing Dennis to pursue projects that reflect his values of landscape in the public realm. His values have been shaped by over 45 years of practice, the majority of which was with EDAW, the largest landscape architecture firm in the world. So his experience is global and he is a thought leader in narrative landscapes, but he chooses a curated practice. He regularly teams with like - minded firms to provide a larger reach and production capabilities.*

**Years in Business: 4**

**Employees: 1**

**Office Location: Alexandria, VA**

#### **Core Competencies & Values**

- *Master Park Planning*
- *Places for people*
- *Narrative Landscapes*

**Website: [www.carmichaelassociatesllc.com](http://www.carmichaelassociatesllc.com)**





Photo Credit: Design Collective

## CROWNSVILLE HOSPITAL MEMORIAL PARK

Anne Arundel County

**carmichael associates**

PROJECTSCOPE

### **Task One: Existing Conditions Documentation and Analysis**

- *Site visits*
- *Site analysis*
- *Review relevant background information*

### **Task Five: Meetings**

- *Participate in Key Stakeholder, Committee, and Subcommittee meetings*
- *Participate in and help facilitate Public Workshops*

### **Task Seven: Submittals**

- *Conceptual design drawings*
- *Lead park master plan design effort*
- *Collaborate with Design Collective Landscape Architecture team on park planning*





**CROWNSVILLE HOSPITAL MEMORIAL PARK**  
Anne Arundel County



## FIRM OVERVIEW

**Years in Business: 100**

**Employees: 1,300**

**Office Location: Baltimore, MD (Headquarters)**

### Core Competencies

- *Transportation*
- *Environmental/Natural Resources*
- *Construction Management*
- *Healthy Communities*
- *Energy & Corrosion*
- *Land & Site Development*
- *Utility Engineering*

### Award Winning Projects and Places

- *#62 on the Engineering News Record's 2020 listing of the Top 500 Design Firms.*

**Website: [www.rkk.com](http://www.rkk.com)**





Photo Credit: Design Collective



## PROJECT SCOPE

### Task One: Existing Conditions Documentation and Analysis

- Site analysis
- Document Existing Conditions: GIS Mapping, Topography, Forests, Wetlands, Waters of the U.S., Buildings, Utilities, Roads and Parking, SWM, and athletic fields

### Task Two: Environmental Analysis

- Review available environmental background information and coordinate with MDNR and USFWS
- Conduct a NRI (Natural Resources Inventory), including Forest Stand Delineation, Specimen Tree Inventory and Wetland/water delineation
- Forest Mitigation Options





Photo Credit: RK&K

## CROWNSVILLE HOSPITAL MEMORIAL PARK

Anne Arundel County



## PROJECT SCOPE

### Task Three: Utilities and Infrastructure Analysis

- Conduct utility mapping
- Evaluate and document Stormwater Management
- Traffic and Transportation - Gather traffic data, develop Traffic Baseline, Traffic Analysis (based on future capacity needs)
- Inform master planning efforts with up to two scenarios

### Task Five: Meetings

- Participate in Key Stakeholder, Committee, and Subcommittee meetings
- Participate in and help facilitate Public Workshops

### Task Seven: Submittals

- Provide Narrative and Exhibits for Existing Conditions - Natural Resources, Utilities, Traffic, and Stormwater Management
- Provide Narrative and Exhibits for Master Plan - Natural Resources, Utilities, Traffic, and Stormwater Management





**CROWNSVILLE HOSPITAL MEMORIAL PARK**  
Anne Arundel County

## EHT|||TRACERIES

HISTORIC PRESERVATION

### FIRM OVERVIEW

*EHT Traceries, Inc., is a certified woman-owned small business specializing in history and historic preservation. We provide our clients with a wide range of professional services, including archival research, survey and documentation, evaluation, regulatory compliance, and preservation planning.*

**Years in Business: 45**

**Employees: 16**

**Office Location: Washington, DC**

#### Core Competencies

- *Preservation Planning*
- *Historic Tax Credits*
- *Technical Preservation*
- *Survey & Documentation*
- *Environmental Sustainability*

**Website: [www.traceries.com](http://www.traceries.com)**





Photo Credit: Design Collective

## CROWNSVILLE HOSPITAL MEMORIAL PARK

Anne Arundel County

# EHT|||TRACERIES

HISTORIC PRESERVATION

## PROJECTSCOPE

### Task One: Existing Conditions Documentation and Analysis

- Review existing documentation and conduct additional archival research
- Identify and determine potential character-defining features
- Evaluate the significance and integrity of all resources including, buildings, structures, objects, and sites.
- Assess existing cultural resource conditions and confirm any historic preservation easements on the property
- Supporting meetings and deliverables

### Task Five: Meetings

- Participate in Key Stakeholder, Committee, and Subcommittee meetings
- Participate in and help facilitate Public Workshops

### Task Six: Supporting Documentation - Regulatory Compliance, MHT Coordination, Eligibility, & Consultation

- Provide consultation related to the legal historic preservation requirements, as well as to physical fabric of the buildings
- Assist with the development of design parameters
- Serve as a liaison between the team and MHT

### Task Seven: Submittals - Historic preservation, adaptive reuse, and preservation planning

- Assist design team with developing alternatives and treatment recommendations
- Review design options and make recommendations regarding appropriate treatment





## WORK TO DATE & NEXT STEPS





# WORK TO DATE & NEXT STEPS



## Work to Date

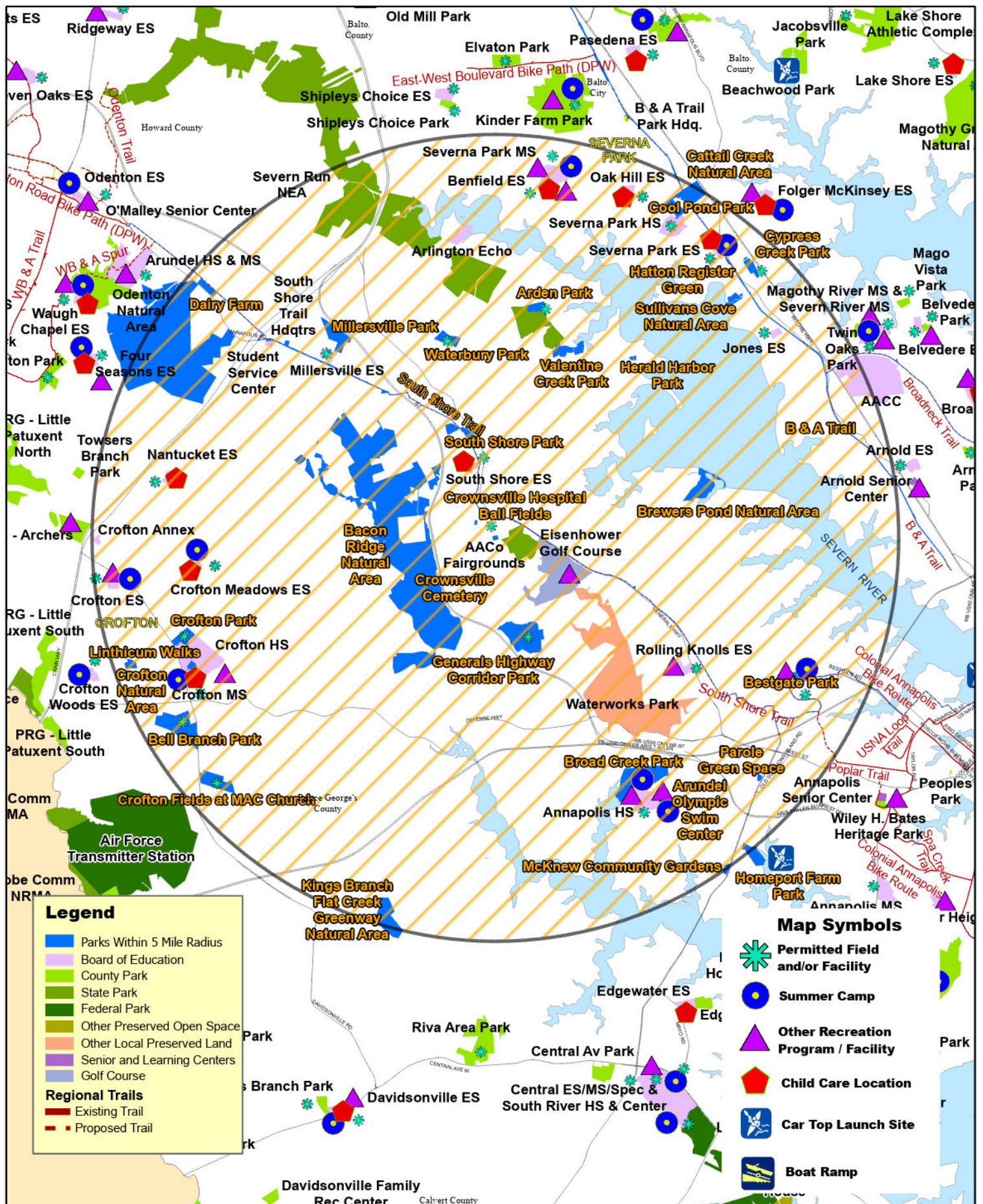
- Consultant team has visited site multiple times (3+) to tour grounds and building interiors
- Met with committees and subcommittees
- Began Site Existing Conditions Inventory
- Began Precedent and Best Practice Research
- Began reviewing existing documentation and conducting additional archival research
- Began identifying and determining potential character-defining features
- Held coordination calls with other contract consultant teams



## Next Steps

- Complete Existing Conditions documentation (draft reports), including utilities, traffic, and historic assessments
- Create Base Site Plan with all known current conditions (layered)
- Meet with Key Stakeholders, including MHT
- Continue to meet with committees and subcommittees
- Prepare for Public Workshop #1





**Arden on the Severn Park - 1103 SUNRISE BEACH RD**

- Baseball Fields
- Multi-Purpose Field
- Picnic Area
- Playground
- Restroom
- Trails

**Arundel Olympic Swim Center- 2690 RIVA RD**

- Swim Center
- Paved Trail
- Playground
- Gazebo

**B and A Trail**

- 16.29 mile paved trail
- From Sawmill Creek Park near BWI to Jonas Green Park near MD Rt450

**Bacon Ridge Natural Area**

- Forest
- Wetlands
- Natural Trails
- Bike Skills Park
- Development of the Forney Section underway

**Bell Branch Park - 1150 Barbara Swann Way**

- Baseball
- Dog Park
- Grills
- Multi-Purpose Field
- Pavilion
- Picnic Area
- Playground
- Restroom
- Trails

**Bestgate Park- 714 BESTGATE RD**

- Baseball
- Basketball
- Picnic Area
- Playground
- Restroom
- Tennis / Pickleball courts
- Trails

**Brewer Pond- 987 SAHLIN FARM RD**

- Tidal Pond
- Forest

**Broad Creek Park -1A Harry S. Truman Parkway**

- 2.095 mile natural trail

**Broadneck Peninsula Trail**

- Paved Trail,
- Several sections in construction. This will extend to Sandy Point State Park

**Cattail Creek Natural Area- 430 Ritchie Highway**

- Natural Area
- Trails

**Crofton Fields at MACC Church- 2485 DAVIDSONVILLE RD, 21054**

**This is a leased site**

- Baseball
- Multi-Purpose Fields
- Pavilion
- Restroom

**Crofton Natural Area- 1805 CROFTON PKY**

- Natural Area
- Trails

**Crofton Park- 2285 DAVIDSONVILLE RD**

- Pavilion
- Picnic Area
- Playground
- Restroom
- Trails

**Cypress Creek Park- 11 CYPRESS CREEK RD**

- Baseball
- Basketball
- Multi-Purpose Field
- Pavilion
- Pickleball
- Restrooms
- Tennis/Pickleball
- Trails

#### **Dairy Farm – 100 DAIRY LN**

This is a lease area that is not really used for recreational activities

#### **General's Highway Corridor Park- 1758 CROWNSVILLE RD**

- Baseball
- Multi-Purpose Field
- Pavilion
- Picnic Area
- Playground
- Restroom
- Trails

#### **Herald Harbor Park -350 Kyle Road**

- Basketball
- Picnic Area
- Playground
- Tennis/Pickleball
- Trails

#### **Homeport Farm Park -11 HOMEPORT DR**

- Cartop Boat Launch
- Restroom
- Trails

#### **King's Branch Flat Creek Natural Area - 953 SAINT GEORGE BARBER RD**

- Natural Area

#### **Linthicum Walks- 2295 Davidsonville Road**

- Historic Site
- Picnic Area

#### **McKnew Community Garden- 2672 Solomon's Island Rd**

- Will be developed into a community garden site

#### **Millersville Park-1580 MILLERSVILLE RD**

- In Design for a new community park

#### **Parole Green Space- 2201 Forest Drive**

- Trails

#### **South Shore Park- 1202 GENERALS HWY**

- Will be developed into indoor/outdoor turf spaces



**Sullivan's Cove Natural Area -111 Bay Parkway**

- Trails
- Natural Area

**Valentine Creek Park -1102 VALENTINE CREEK DR, 21032**

- Has been evaluated for a fishing pier and natural trails
- Current use of natural trails and natural use

**Waterbury Park- 1251 Sunrise Beach Road**

- Baseball
- Basketball
- Pickleball
- Picnic Area
- Playground
- Restroom
- Tennis/ Pickleball courts
- Trails



STEWART PITTMAN COUNTY EXECUTIVE  
JESSICA LEYS, DIRECTOR  
1 HARRY S. TRUMAN PARKWAY  
ANNAPOLIS, MD 21401  
410-222-7867



## **Crownsville Hospital Memorial Park**

### **R&P Subcommittee-Meeting #2 Minutes**

6 December 2023 / 6:00 PM / R&P Conference Room

#### **Attendees**

Scott Hymes (SH), Chairman, Mike Podzol (MP), Dave Beugelmans (DB), Jim Lighthizer (JL), Jon Korin (JK), Michael Carter (MC, online), Jawann Wills (JW), Gene Deems (GD), Bob Agee (BA), John Faber (JF)

County Staff: Erica Matthews(EM), Kristina Piergrossi (online), Jess Hardy

Not Present: Tonya Montgomery, Sarah Knebel

- I. **Call to Order:** The meeting was called to order at 6:07 pm.
- II. **Review and approval of the meeting minutes** from Meeting #1. There were no meeting minutes from the visit to Crownsville. There was a request for one change to the minutes. There was also a request to place the minutes on Google so that comments could be suggested before the meeting.
- III. **Presentation from DPW and Design Collective**

Erica Matthews opened with introductions of Michael Stroud (MS) from DPW, who introduced Cecily Bedwell (CB) from Design Collective, the lead firm in the Master Plan effort for the CHMP project.

- A. Most of the subcommittees have had briefings from Design Collective.
- B. CB indicated that Design Collective was gathering feedback from email, the web, town halls, subcommittees, etc., as they are beginning stages; however, the feedback collection would be continuous throughout the entire process.
- C. CB reviewed the project team's structure and the project schedule. The project is currently in the inventory and documentation phase. The team will include Dennis Carmichael, park planning and RKK, and infrastructure review. The work being completed by RKK will be integrated into Design Collective's work product. She indicated that the preliminary analysis would be available in January at a public workshop so all involved would better understand the site's condition.
- D. JK asked if transportation would reflect all models. CB- The final campus planning will integrate trails, mountain bikes, equestrian, walking, and general biking.
- E. JK- Will the meeting be in person, CB- yes.

- F. DB asked how the work of the subcommittee fit into the process. CB - Design Collective will be attending all the subcommittee meetings. They are seeking input from the subcommittees to help determine the overall master planning, including input on suggested amenities and placement on site. Each subcommittee, by way of its chairman, is represented on the larger committee. This is another way for information to roll up. CB noted that nothing will go to the public without going through the steering committee first. DPW would share all information from the various subcommittees with the project team.
- G. JL- Task Four- Code Review what does that cover? CB- This will ensure that all applicable county, state, and federal codes are reviewed and that this project will comply.
- H. JL - What process will MDE expect? MS- indicated that the project is not yet at that point in the process for MDE review but acknowledged that MDE be a part of the review process.
- I. CB stated that Design Collective will test fit ideas and programs in the project's second phase. They will provide feedback on all options, including cost. In the project's third phase, the Master Plan will be drafted. It would be a consensus-driven design outlining what will be included in the project. Lastly, the fourth phase will deliver a final plan and report.
- J. SH asked about the status of the building conditional assessment that is currently underway. MS-this is ongoing and a draft is being circulated for review. Once it is complete it will be shared with the subcommittees. CB stated that the report was quite detailed and discussed the structural integrity of each building in detail.
- K. MC asked if the concrete surfaces under the buildings could be utilized for amenities that require hard surfaces. MS said that would depend on the overall layout but that it is too early to tell until we have the plan and the building analysis. Some buildings have sub-basements and crawl spaces and are not on concrete slabs.
- L. Cecily discussed the work completed to date and outlined the next steps. Much information was covered, and she said she would provide us with a copy of her presentation for future reference. EM will place the Design Collective presentation in the group's working folder.
- M. Members of the group agreed that the next and most crucial step would be visionary planning. Design Collective would be willing to help facilitate that. There is GIS data available that has because line work but there is not a detailed existing conditions plan at this time. There is enough information using GIS to do some visionary work. DPW will provide a scaled plan once it is complete. MS indicated that the expected completion is after the holidays, and something should be available for this group's next meeting.
- N. There was a discussion about the impervious coverage onsite. JL asked if there had been any calculations to determine the amount of impervious surfaces

onsite as that might be a limitation that should be considered during design. CB asked where this idea came from. JL indicated that it would seem no increase in impervious surface was an administrative decision.

- O. BA said that KCI had studied the site a few years ago for the State Health Department, and it provided a detailed review of Crownsville and asked if that had been used as a resource. MS said that he had not seen that and that perhaps it was buried in the data transferred to Design Collective and that he would look into that.
- P. SH said that Anne Arundel County was currently using innovative and effective techniques for stormwater management, regenerative by design, and he hoped that the project would include some of them. CB said that Collective Design would welcome the input, and MS followed by stating that all stormwater would be treated on-site and that only the best techniques would be implemented.
- Q. SH thanked Cecily and Mike for attending this meeting and invited them to stay to view the drone footage he took of the CHMP site.

#### **IV. Chairman Update-Scott Hymes, Chairman, R&P Subcommittee**

SH reported that at the last Steering Committee meeting, Design Collective gave the same presentation just shared with the group. He noted that the architect selected for the project has a history of developing troubled properties like Crownsville. SH believes that they would be very considerate of the property's history and the events on the site.

SH informed the group that DPW gave an update on the infrastructure of the spray fields. The site will be converted from spray fields to public sewer lines. With the removal of the spray fields, a sizeable amount of property could be used better. However, it is important to note that people may oppose underground sewer lines.

#### **V. Review of Old Business**

- Tour of Campus- completed-
- Drone footage- SH shared the drone footage.
- Easement language and the 5 Mile Study preliminary needs document have been completed and posted to the shared group folder.
- The easement language is pretty ironclad. The easement holder would be the decision maker, but bridges and graded footpaths would likely be allowed.

#### **VI. Open Discussion**

- A. EM began the discussion by asking if anyone would like to be a liaison for another Committee. As a CHMP tenant, Jon Korin has been asked to be on the Health subcommittee. Jim Lightheizer and Bob Agee have expressed interest in

the Infrastructure subcommittee. Jawann Wills might be interested in the Wellness subcommittee as well.

- B. Was asbestos mentioned in the documents- No. Can the asbestos be capped? The old KCI report made some recommendations on the pipes and possibly filling and sealing them to prevent leaching. A question was asked about leaching?
- C. The committee had numerous questions:
  - a. Has a study been done to determine how many people the campus can serve, i.e., roads, buildings, water, and sewers?
  - b. Will there be septic? Port-a pots?
  - c. Will DPW use the current systems and then convert them to sewer?
  - d. Would the lines come from Bestgate Rd to the park?
  - e. What would the impact of that be on the local community?
- D. There was a brief discussion on parking and paving. Parking is the limiting factor for most parks. The group agreed that shared parking should be considered. The community would likely support pervious paving. A lagoon could be added for the impervious surfaces, or a liner could be put in that makes it impervious.
- E. All agreed that the committee needs to discuss what amenities it would like in the park. Keeping in mind that this will be a regional facility, this opens up bigger ideas. There was discussion about doing a public survey, like the Plan Your Park campaigns. It was noted that there would be no stakeholder-facilitated public meeting. It would be open for all public feedback. The group decided to table this discussion until after the first public meeting.
- F. In the next meeting, the group will focus on what amenities they would like to see and not so much on where they would go. The goal would be to produce a prioritized list of amenities, including, facilities, activities, and indoor and outdoor programming. The chairman can get that list to the planning committee. More details can be added later.

## **VI. Action Items**

- A. Create the meeting schedule through the Summer
- B. Post the Design Collective presentation in the project folder.
- C. Cecily Bedwell and Mike Stroud need to be added to the group shared drive to the group email list.
- D. Invite Design Collective to participate in next month's planning meeting.

**CHMP R&P Subcommittee**  
**Appendix A3**  
**Meeting #3 Documents**

**Crownsville Hospital Memorial Park  
Recreation & Parks Sub-Committee  
Wednesday, January 10, 2024  
Meeting #3 Agenda**

- I. Call to order**
- II. Review and approval of minutes from the last meeting-Erica Matthews**
- III. Chairman Update-Scott Hymes**
- IV. New Business**
  - a) Jon Korin – Trails Information
  - b) DPW and Design Collective to facilitate Brainstorming Session
- V. Open Discussion**
- VI. Adjournment**
- VII. Next Meeting-Wednesday, February 21, 2024**



STEUART PITTMAN COUNTY EXECUTIVE  
JESSICA LEYS, DIRECTOR  
1 HARRY S. TRUMAN PARKWAY  
ANNAPOLIS, MD 21401  
410-222-7867



## **Crownsville Hospital Memorial Park**

### **R&P Subcommittee-Meeting #3 Minutes**

10 January 2024 / 6:00 PM / R&P Conference Room

#### **Attendees**

Scott Hymes (SH) (Chairman), Mike Pozdol (online), Dave Beugelmans, Jim Lighthizer, Jon Korin, Jawann Wills (JW), Bob Agee, John Faber (online), Sarah Knebel

Design Team: Brian Reetz (BR), Matt Damico (MD), and Dennis Carmichael (online)

County Staff: Erica Matthews(EM), Jessica Leys, Kristina Piergrossi, Jessica Hardy, Michael Stringer, April Aviles

Not Present: Mike Carter, Gene Deems

- I. **Call to Order:** The meeting was called to order at 6:02 pm.
- II. **Review and approval of the meeting minutes** from Meeting #3.
- III. **Welcome**

EM opened with introductions of Brian Reetz, Matt Damico, and Dennis Carmichael from Design Collective, who were present to help facilitate the committee's discussion of park amenities and features, as well as two outside guests, Michael Stringer, a Senior Planner from Planning and Zoning and April Aviles, the Assistant Director of the Equity Office of the County Executive and is an active member of the CHMP Health and Wellness subcommittee.

#### **IV. Chairman Update**

SH- There is an upcoming committee meeting in the next couple of weeks, and he is hoping to show some progress on the work this committee is doing.

#### **V. Open Discussion**

##### **A. Trails Information:**

EM gave a brief update on the South Shore Trail, its connection points to the CHMP project, and progress on work currently underway. The South Shore trail is a paved trail. Phase 4 of the trail (currently in design) would run along Crownsville Rd and connect to the Crownsville campus at Marbury Rd and Hawkins Rd. From Hawkins, the trail would continue along Crownsville Rd and reach WaterWorks. Natural trails would extend from Bacon Ridge to the



Cemetery across Farm Rd onto the main park campus. The internal trail connections would connect to this larger trail system. The internal locations have not been determined, but they should be shared use and function as pathways throughout the campus to connect attractors.

B. Brainstorming Session

1. Design Collective facilitated this exercise, and it was an open discussion to share ideas about recreational programming and amenities that should be provided on this site.
2. MD assured the group that they would be provided with a synthesis of all the work planned in the session. He asked each member of the group their thought on the uniqueness of the site and what each member of the committee thought should be celebrated.
3. BR reminded the group of the historical component of the site, and asked that the group tell the Crownsville story with dignity and respect for the lives of the people who were a part of its troubled history.
4. The group agreed that wellness and healing should be the theme for how programming is determined. JW shared a well-known Acceptance and Commitment Therapy (ACT) model and suggested it be used to convert therapeutic themes such as Modality into action/activities on-site. The hexaflex model includes Acceptance, Values, Mindfulness/Present Moment Awareness, Committed Action, Self as Context and Cognitive Defusion. Collectively the group thought the model should be applied when determining recreational programming:
  - Present- Being present in the moment, exploring and enjoying the campus
  - Values- Highlight the history of the site, honor the site, good sportsmanship, environmental conservation, rest, community,
  - Committed Action- preservation of environmental features, therapeutic recreation, Create Opportunities to Enjoy Life, Explore Nature, and Restore Health and Well-being.
  - Self As Context- The observing of self. Meditation, wildlife observation.
  - Cognitive Defusion- thoughtful programming that will result in diversity and inclusivity.
  - Acceptance - Create opportunities for happiness and a healthy mind through physical activity.

C. Group discussion on the **overall ideas** for the campus produced the following:

- The campus needs to be a part of the community.
- Health and Wellness are the focus.

- Transportation- The campus should be walkable/bikeable. Other modes of transportation should be present on-site and connected to the County Trail system.
- The park should be accessible to all and should be designed to be a multigenerational campus that persons with various abilities and disabilities can enjoy.
- Determine the Campus Capacity as a result of potential constraints like restrooms, parking spaces, SWM, and road capacity.
- There was some comments the park should consider lower intensity uses to reduce the traffic to this site and reduce the need for parking.
- Remove the spray fields and move the property to the public sewer.
- Exceed SWM requirements
- Reuse of spaces where it makes sense
- Combined use of spaces across subcommittees
- This should be a countywide amenity

D. Group discussion on **recreational ideas** for the campus produced the following:

- Community Center- Indoor space for a range of activities such as recreational programming, community gathering, gym, etc
- Organized Recreational use- field use should be limited, track should be considered. It was suggested not to make this look like a large athletic complex but rather cluster the fields in areas to maintain topography as much as possible. Also, indoor track was suggested.
- Agricultural use- Gardens, Equines onsite
- Attractors- Pump/ Bike Skills park, playground, observation areas, multi-use trails, campgrounds, outdoor amphitheater, art in the park, different types of gardens
- Overnight recreational opportunities
- Programming: Summer Camps, childcare, theater arts, arts and crafts, wellness walks, nature hikes, gardening clubs, fitness programs, organized sports.

G. What is next in terms of making recommendations:

- Additional engagement to refine recreational recommendations: feedback from larger public meetings and committee outreach to those with a connection to the property is needed.
- Refine the program to fit the campus.
- Determine placement for on-site amenities to be constructed, being considerate of shared use, the campus functionality, and the preservation of environmental features.

## VI. Action Items

- A. Determine the Date for the next public meeting
- B. Begin reaching out to hear from others who have a personal connection to the property.
- C. Follow up on the campus capacity question

**VII. Next meeting 2/21 at 6pm at 1 Harry S. Truman**



Two tennis courts = 6 Pickleball Courts Similar to Annapolis Truxtun Courts approx. 130' x 110'

# Crownsville Advisory Committee-

Recreational Subcommittee

Update

01/29/2023



ERICA MATTHEWS,

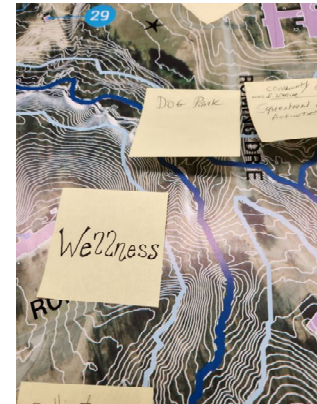
DEPUTY DIRECTOR





# Topics:

- ❖ Introduction
- ❖ Progress so far
- ❖ Preliminary Recreational Programming
- ❖ Next Steps



*Some photos were taken from various websites and the Design Collective Report*

# Introduction

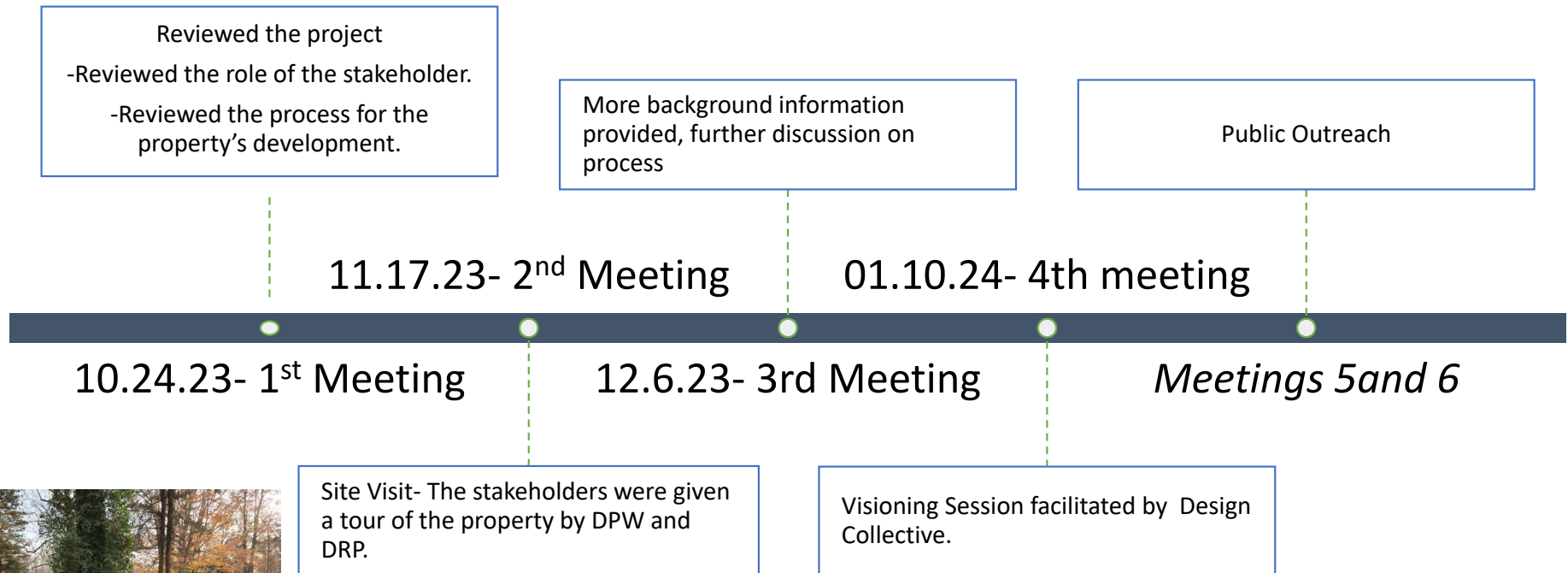
Committee Mandate Recreation & Parks– To provide guidance on the development of recreational and park amenities on CHMP and the use of the property within the Maryland Environmental Trust (MET) conservation easement area.

DRP Vision and Mission - To enrich the lives of all residents of Anne Arundel County.

*We Create Opportunities to Enjoy Life, Explore Nature, and Restore Health and Well-being.*



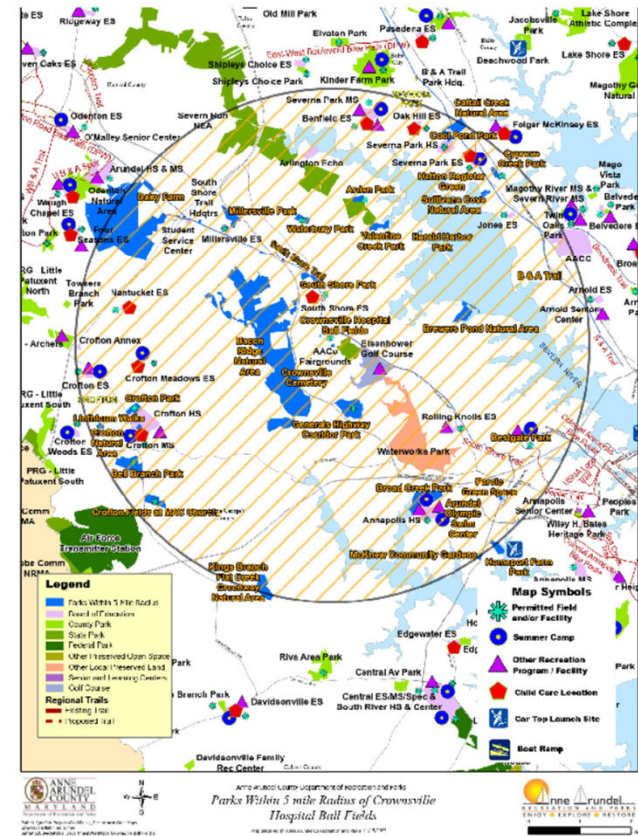
# Progress so far:



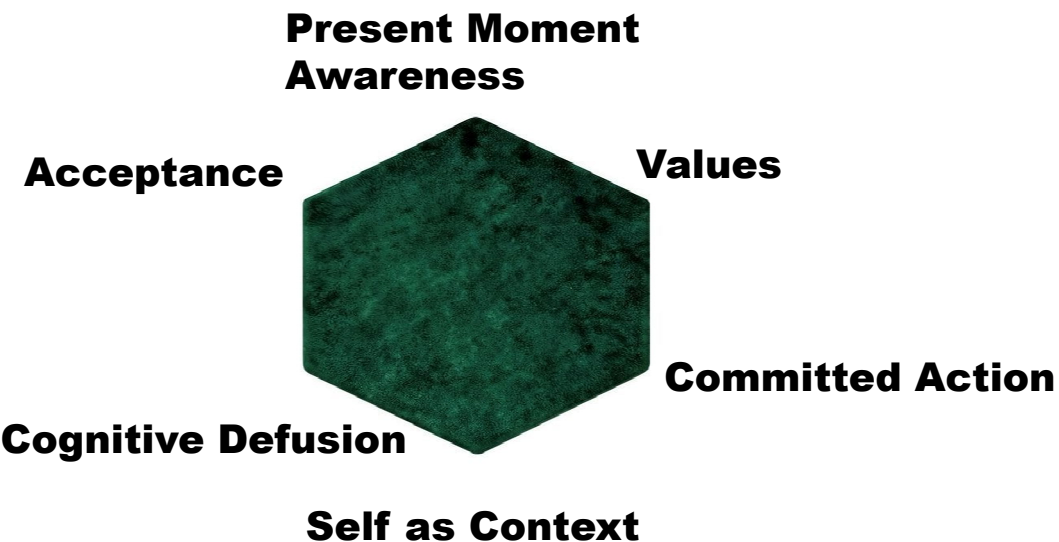


# Preliminary Recreational Programming- Need/Proximity

- As this facility will be a Countywide amenity, there was discussion about the current recreational opportunities that exist in this region and what is planned.
- LPPRP Identified needs
  - Community Places ranked as a high need in District 6
  - Natural areas, conservation, and green space
  - Walking and biking trails
  - Track and field facilities
  - Turf fields,
  - senior resident activities,
  - playgrounds,
  - indoor swimming,
  - gymnastics, dance,
  - and picnic and pavilion areas
- Other capital projects in the area that could potentially meet some of the needs:
  - Development of the South Shore Trail to abut Crownsville Rd to connect the paved trails to Waterworks
  - Development of SUP paths from Bacon Ridge to the Crownsville Site, then continuing to the paved trails to Waterworks
  - Eisenhower Golf Course - Clubhouse
  - South Shore Park- Potential site for 1-2 indoor/outdoor turf fields Millersville Park- New Community park with 3 Multipurpose fields
  - West County Pool



# Preliminary Recreational Programming- Theme



- **Wellness and Healing** should be the theme for how programming is determined
- **Convert therapeutic themes such as Modality into action/activity on-site:**
  - **Present-** Being present in the moment, exploring and enjoying the campus
  - **Values-** Highlight the history of the site, honor the site, good sportsmanship, environmental conservation, rest, community,
  - **Committed Action-** preservation of environmental features, therapeutic recreation, Create Opportunities to Enjoy Life, Explore Nature and Restore Health and Well-being.
  - **Self As Context-** The observing of self. Meditation, wildlife observation
  - **Cognitive Defusion-** thoughtful programming that will result in diversity and inclusivity
  - **Acceptance** - Create opportunities to find happiness and a healthy state of mind through physical activity.

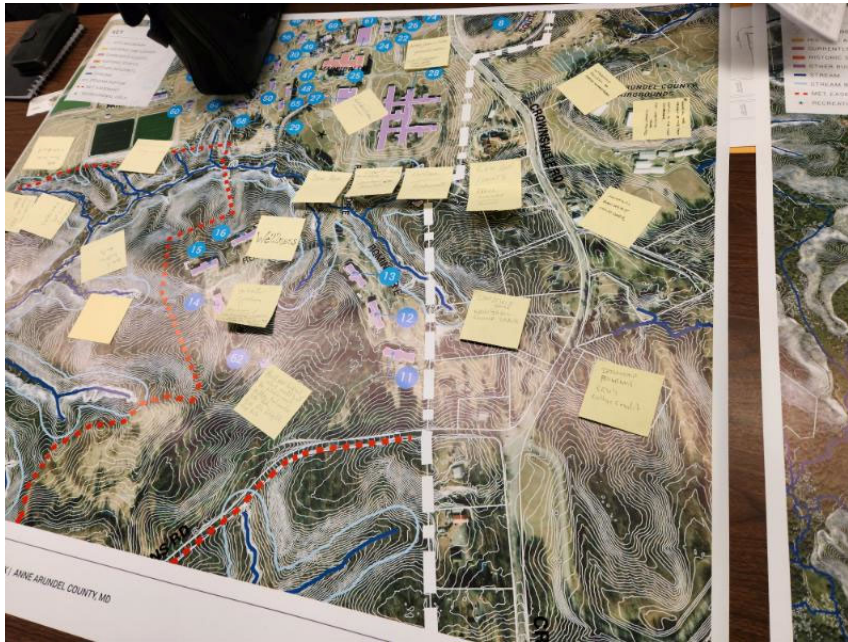
# Preliminary Recreational Programming

## Overall Campus Ideas

- The campus needs to be part of the community.
- Health and Wellness are the focus.
- Transportation- The campus should be walkable/bikeable. Other modes of transportation should be present on-site and connected to the County Trail system.
- Determine the Campus Capacity
- Remove the spray fields and move the property to the public sewer.
- Exceed SWM requirements
- Reuse of spaces where it makes sense
- Combined use of spaces across subcommittees
- Countywide Amenity



# Preliminary Recreational Programming



## Recreational Ideas

- Community Center- Indoor space for a range of activities such as recreational programming, community gathering, gym
- Organized Recreational use- no more than four fields, track
- Agricultural use- Gardens, Equines onsite
- Attractors- Pump/ Bike Skills park, playground, observation areas, multi-use trails, campgrounds, outdoor amphitheater, art in the park, different types of gardens
- Overnight recreational opportunities
- Programing: Summer Camps, childcare, theater arts, arts and crafts, wellness walks, nature hikes, gardening clubs, fitness programs, organized sports,



# Next Steps: Short Term- Outreach to Influence Committee Recommendations

---

## FEEDBACK FROM LARGER PUBLIC MEETINGS

- What were some of the themes from the 1<sup>st</sup> public meeting and the upcoming meeting , and how can they be incorporated into the project?
- They have been encouraged to attend the 2/13/24 public meeting

## COMMITTEE OUTREACH

- Reach out to those who have a connection to the property to hear their desires for the property.
- The goal is to create community and be respectful of those who have connections to the site.

## ADDITIONAL ENGAGEMENT

- This is still being determined and need to align with overall masterplanning
- Possible ideas:
  - Recreational survey to define ideas
  - Recreational public meeting
  - Open the recommendations up for comment prior to final recommendations

# Next Steps: Long Term- Committee Recommendations

---

- Monthly meetings planned through July 2024
- Additional engagement to refine recreational recommendations.
- The program wants maybe to big for the campus and it will need to be refined.
- Determine Placement on-site for amenities to be constructed. Consideration for shared use, campus functionality, and preservation of environmental features.
- Make recreational programming recommendations.



## Summary

The stakeholder group is making significant progress on the defined goal. Health and wellness are the themes for recreational development. The campus should be a transformational site. Public engagement needs to be conducted. The final work product should be complementary to the work being developed by the other committees. Recommendations have not been determined yet. Work will continue through the summer.





# Thank you

---

Erica Matthews, Deputy Director Anne  
Arundel County - Recreation and Parks

Jessica Leys -Director -Anne Arundel  
County Recreation and Parks

Email address:

chmp\_recandparks@aacounty.org

Website:

<https://www.aacounty.org/recreation-parks>



**CHMP R&P Subcommittee**  
**Appendix A4**  
**Meeting #4 Documents**



STEUART PITTMAN COUNTY EXECUTIVE  
JESSICA LEYS, DIRECTOR  
1 HARRY S. TRUMAN PARKWAY  
ANNAPOLIS, MD 21401  
410-222-7867



## **Crownsville Hospital Memorial Park**

### **R&P Subcommittee-Meeting #4 Agenda**

21 February 2024 / 6:00 PM / R&P Conference Room

- I. Call to Order**
- II. Review and approval of the meeting minutes from Meeting #3.**
- III. Chairman Update- Scott Hymes**
- V. New business**
  - A. Community Presenters**
  - B. Trails Presentation**
  - C. Review of the 2/13/24 public meeting**
  - D. Additional public engagement**
- VI . Open Discussion**
- VII. Next meeting 3/13 at 6pm at 1 Harry S. Truman**



# **CROWNSVILLE HISTORY MAKERS SUGGESTIONS**

**Presented by Lyndra Marshall and Faye Belt**

**February 21, 2024**







# ONLYINMARYLAND

# CROWNSVILLE STATE HOSPITAL





# How We Met?







# The Capital

Monday, July 3, 2023

A Capital-Gazette Newspaper® — Annapolis, MD \$3.50

## 'IT'S JUST PLAIN EVIL'

2 killed, 28 wounded  
in mass shooting at  
Baltimore block party

By Lilly Price, Lia Russell  
and Darcy Costello

An evening block party that started as a joyful celebration of the Brooklyn community turned into a terrifying scramble for safety when at least two shooters opened fire early Sunday morning.

South Baltimore's Brooklyn neighborhood was hosting its annual "Brooklyn Day" community event when gunfire erupted,

wounding dozens and killing two. Police officers responded to multiple shooting reports at about 12:35 a.m. Sunday in the 800 block of Gretna Court.

An 18-year-old woman and 20-year-old man died in the shooting, authorities said. Twenty-eight other gunshot victims were transported or walked into area hospitals for treatment. Three of those 28 were in critical condition as of early Sunday morning.

Later Sunday, officials said their preliminary investigation indicated 14 of the 28 surviving shooting victims were under age 18.

The Sunday violence is likely the largest shooting in Baltimore history. But official data about

mass shootings only dates back to 2014. The Gun Violence Archive, a Washington, D.C.-based nonprofit that documents the nation's shootings, lists no Baltimore incidents with more than a dozen victims since 2014, the earliest mass shooting report available.

It comes as Baltimore continues to grapple with persistently high levels of violent crime, including more than 300 homicides in 2022 for the eighth year in a row. Attention this year has increasingly centered on young people who are committing or falling victim to gun violence.

Acting Baltimore Police Commis-

Turn to Shooting, Page 6



Investigators look for more evidence as trash is swept up following the shooting of 30 people, including two who died, at a block party at Brooklyn Homes in Baltimore early Sunday morning. AMY DAVIS/BALTIMORE SUN

## Celebrating Columbia Beach



Xavier Thompson, from left, Kwesi Adam and Jonathan Broadnax play traditional African drums as part of Saturday's Columbia Beach Day. The event marked the 83rd anniversary of the community. PAUL W. GILLESPIE/CAPITAL GAZETTE PHOTOS



Summer Hoffmann and her father, Ray Hoffmann, look at model Chesapeake Bay waterman boats.



Faye Bell, outgoing president of the Columbia Beach Citizens Improvement Association, cuts a ribbon on a historic marker.



### MARKET HOUSE

## Lease renewal draws criticism

Some question deal following failure to file financial reports

By Rebecca Ritzel

Market House, a city-owned downtown Annapolis landmark, has been leased for another five years by a team that includes Mayor Gavin Buckley's business partner.

The original lease expired Friday. The renewal was issued despite an apparent violation: Jody Danek, who operates the Market House, never filed annual financial reports for the building's business and never paid "percentage rent," which would have been triggered if reports showed gross sales at the restaurant, coffee shop and other vendors topped \$1.5 million.

Danek is the mayor's partner on several other restaurant projects, but not Market House.

The renewal is drawing criticism from area business owners and the mayor's political opponents because the \$8,400-per-month rate is below market value in downtown Annapolis, according to real estate professionals and several business owners interviewed by the Capital Gazette.

John Russ, a principal at Russ Commercial Real Estate Service in Annapolis, said businesses around Market Space, City Dock and Main Street typically rent for \$40-\$55 per square foot each year, however he is aware of a few paying \$65-\$75 per square foot.

Under the renewal terms, Danek and his partners will pay \$18.92.

"That's a pretty sweet deal," said Steven Storm, who has owned and operated the Storm Bros. ice cream shop since 1976. Once Market House was leased for \$8,000 a month in 2018, Storm successfully

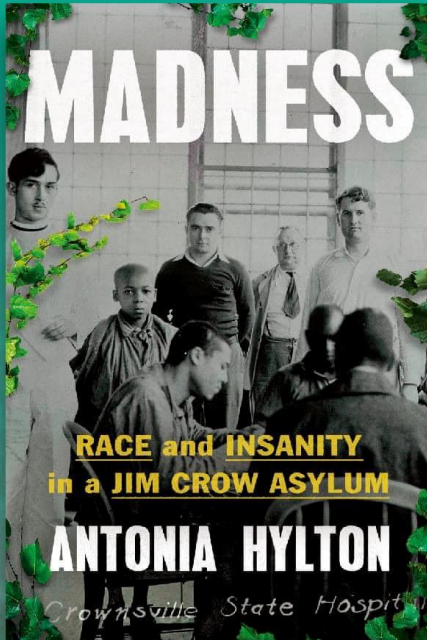


# **What's Next? The Vision!!!**





## SAVE THE DATE: MADNESS BOOK TOUR



JOIN AUTHOR ANTONIA HYLTON FOR A  
DISCUSSION ABOUT THE NEW BOOK  
MADNESS: RACE AND INSANITY IN A JIM  
CROW ASYLUM, AND HONOR THE FORMER  
PATIENTS & STAFF OF CROWNSVILLE.  
REFRESHMENTS WILL BE SERVED.

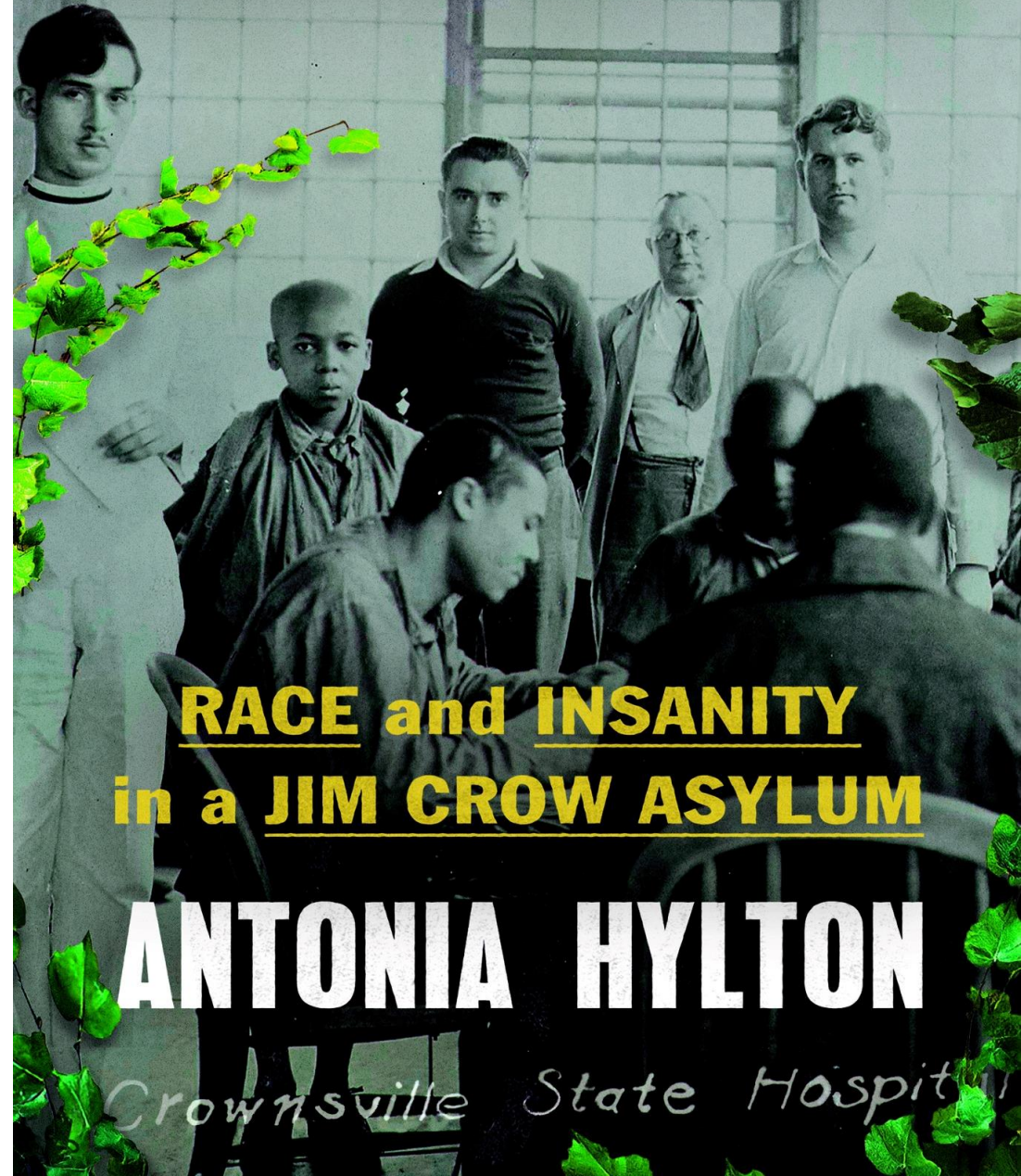
FRIDAY, JANUARY 26, 2024  
DOORS 6PM, BEGINS 7PM

INDIAN CREEK SCHOOL  
1130 ANNE CHAMBERS WAY,  
CROWNSVILLE, MD 21032

TICKETS AVAILABLE SOON

HOSTED BY PARK BOOKS

# MADNESS



**RACE and INSANITY**  
**in a JIM CROW ASYLUM**

**ANTONIA HYLTON**

*Crownsville State Hospital*



## HONOREES



***Former Staff reflected in MADNESS***

Barbara Arthur  
Thomas Arthur  
Edward Austin  
Dr. James Ballard, Sr.  
Faye Belt  
Frederick Belt, Jr.  
Gertrude Belt  
Wayne Belt  
Reverend Dennis Dupont

Dr. Luis Ricardo Flores  
Marie Gough  
Betty Hawkins  
Estelle Jones  
William Jones  
Dr. Reverend Sonia King  
Paul Lurz  
Dorothea McCullers  
Anne Beatrice Pearman

Dr. Errol Phillip  
Dr. George McKenzie Phillips  
Joyce Phillips  
Frederica Reese  
Dr. Maria Reyes-Soto  
Barbara Shank  
Dr. Brian Sims  
Donald Williams  
Laura Williams

## SPONSORS

**Anne Arundel County Government**

**Captain Charles McFarlane & Anne Arundel County Police Department**  
**Sheriff Everett Sesker, Anne Arundel County Sheriff's Office**

**Belt Family**

**Chesapeake Crossroads Heritage Area**  
**Galesville Community Center, Inc.**  
**Herald Harbor Fire Department**  
**Highstarr Copy & Print Services**  
**Indian Creek School**  
**Hachette Book Group**

**Alan Hyatt**

**Pamela Offer**  
**Marshall-Pratt Family**  
**Park Books**  
**Anthony A. Smoot Productions**  
**Tang Florist**  
**Valeu Photography**

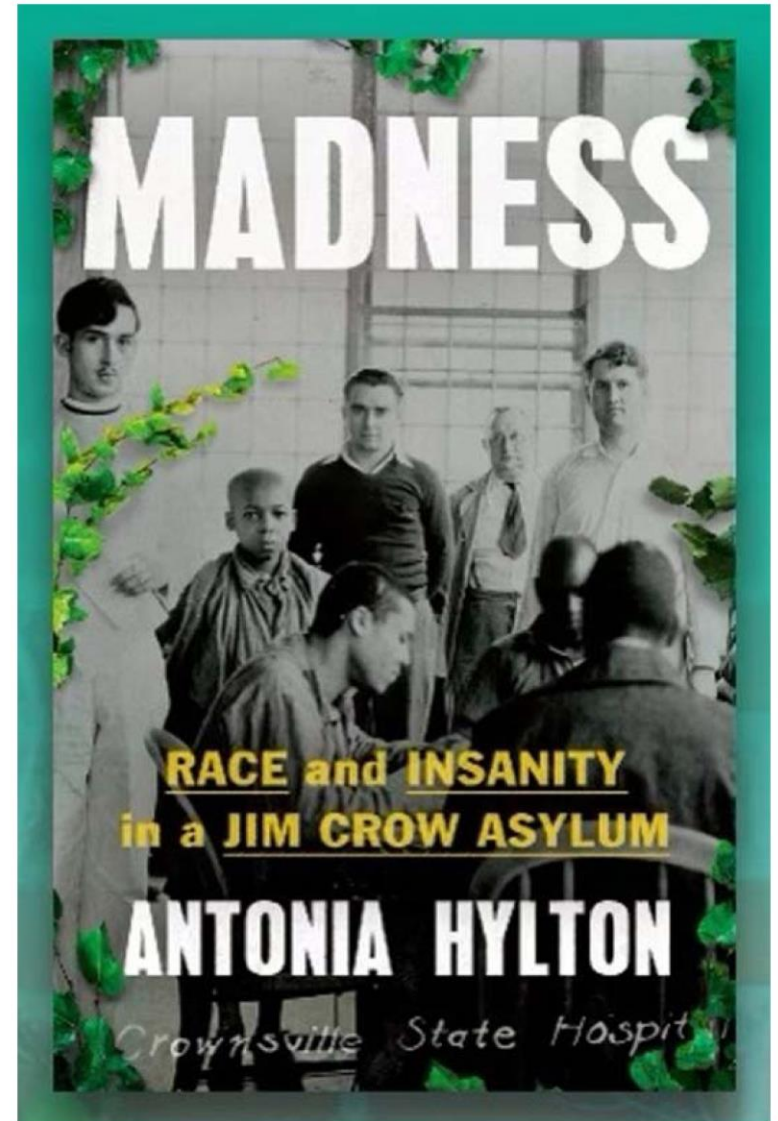
## EVENT COMMITTEE

**Chairs: Faye Belt & Lyndra Marshall née Pratt)**  
**Courtney Buiniskis | Vincent Moulden | Carl Snowden**  
**Support Committee Members**

## CROWNSVILLE

### BOOK SIGNING CEREMONY

**Friday, January 26, 2024 | 7:00 P.M.**



**Indian Creek School**  
**1130 Anne Chambers Way**  
**Crownsville, MD 21032**

## AUTHOR



**Antonia Hylton** is a Peabody and Emmy-award winning journalist at NBC News reporting on politics and civil rights, and the co-host of the hit podcast *Southlake*. She graduated magna cum laude from Harvard University, where she received prizes for her investigative research on race, mass incarceration and the history of psychiatry. She lives in Brooklyn, New York.

Antonia is the author of the newly released book ***Madness: Race and Insanity in a Jim Crow Asylum***. In “Madness,” she explores the hidden history of Crownsville State Hospital, and America’s continuing failure to care for Black minds.

## GUEST PRESENTER



**Zinhle Essamuah** is known for her eclectic mix of broadcast, documentary, and digital storytelling that attracts diverse audiences to traditional and new mediums. Previously, she was a correspondent at *NowThis* News of Vox Media Group. Zinhle opened and led the company’s D.C. bureau, soon tapped to anchor *KnowThis*, a daily evening news show, and *KnowThis* Live, a weekly

political interview magazine program. She holds a Master’s in Strategic Communication and Documentary Film from The George Washington University. Zinhle reports on justice, culture, and poverty and is based in New York City.

## PROGRAM

**Opening – Faye Belt, Visionary & Chair**

**Opening Prayer – Rev. Zelda Childs**

**Selections – Extensions of Faith**

**Introduction of Elected Officials – Lyndra Marshall, Chair**

***Governor Wes Moore, State of Maryland***

***County Executive Steuart Pittman, Anne Arundel County***

**Introduction of Book Author and Special Guest**

***Tara Kennedy, Hachette Book Group***

***Melody Wukitch, Park Books***

**Author’s Talk – *Madness: Race and Insanity in a Jim Crow Asylum***

***Antonia Hylton, Author***

***Zinhle Essamuah, Guest Presenter***

**Q & A – Antonia Hylton & Guests**

**Special Recognition – Faye Belt & Lyndra Marshall**

***Former Crownsville Staff & Patient***

**Presentations – Faye Belt, Lyndra Marshall & Elected Officials**

**Closing Remarks – Honorable Carl Snowden**

**Closing Song – “Say My Name” by Scotti Preston**

**Book Signing or Pick-up Instructions – Melody Wukitch**

**Reception & Mingle**

***Special thanks to everyone for supporting this historic event!***

















## About Lyndra Marshall (née Pratt)





# THE SELLMAN FAMILY One Family, Two Centuries



General Jonathan  
Sellman Jr. (1753-1810)  
Portrait by John Ross Biddle,  
courtesy of Maryland State

The Sellmans were among Maryland's earliest European settlers. Seven generations of Sellmans lived in this house between 1735 and 1908.

John Sellman (ca. 1645-1707) arrived in America in 1658 as an indentured servant from England.

His son, William Sellman (ca. 1689-1743) purchased this land in 1729 and built Woodlawn in 1735.

Jonathan Sellman Jr. (1753-1810) served as a major in the Continental Army during the American Revolution. After the war, he was promoted to the rank of general in the Maryland state militia.

Alfred Sellman (1797-1854) was a colonel in the Mexican-American War. He built the 1841 extension you are standing in now.

Wesley Sellman (1880-1961) and his family were the last Sellmans to live in the house. Unable to support their children on the income the farm provided, they moved to Baltimore around 1908.

Sellman family descendants still live in the area today, including African American family members descended from the family's slaves.



Colonel Alfred  
Sellman (1797-1854)  
Portrait by Frederick L. Jones for  
Henry Clay Carter



Wesley Whitright  
Sellman (1880-1961)  
Courtesy of the National Archives



Elise Alverna Sellman Pratt (1923-1976)  
was one of several African American  
Sellman family descendants  
who lived in the area.  
Courtesy of the National Archives



## WOODLAWN OWNER





## About Faye Belt







**Faye Belt holds her hand on a large wooden cross while she prays for those buried in the cemetery, as Antonia Hylton stands by her side. The 17th annual "Say My Name" ceremony in remembrance of the 1722 institutionalized patients buried at the former Crownsville State Hospital for the Negro Insane, was held, April 30, 2022.**



# My Experience with Recreation and Parks

## GALESVILLE HOT SOX FIELD RIBBON CUTTING/GRAND REOPENING SEPTEMBER 10, 2022 @ 11:00 a.m.

Galesville Community Center Organization, Inc. <http://www.historicgalesville.org/>



## RIBBON CUTTING CEREMONY EXHIBITION GAMES ~ REFRESHMENTS



**West River  
Improvement  
Association, Inc.**









ANNE ARUNDEL COUNTY  
MARYLAND  
Executive Citation  
The Residents of Anne Arundel County, Maryland  
salute  
Galesville Community Center Organization, Inc.  
in recognition of your service to the community and your ongoing commitment to the community.  
Galesville Hot Sox Field  
Thank you for your service to the community and your ongoing commitment to the community. We  
commend your work and your partnership with the Galesville Hot Sox  
Team and the Hot Sox Improvement Association to support this  
project and to make this field a better place for the community.  
The residents will greatly benefit from these many upgrades and from  
the local history that has been preserved here. We commend you for your  
service and your work for a long and productive  
partnership with the community.  
Thank you for helping to make  
Anne Arundel County The Best Place - For All.  
Stewart L. Pittman  
County Executive  
September 18, 2022





HOT SOX FIELD

AT WILSON PARK

ANNE ARUNDEL COUNTY RECREATION AND PARKS

A DNR PROGRAM OPEN SPACE PROJECT





Galesville

Hot Sox















### GALESVILLE HOT SOX BASEBALL TEAM

[illegible]



**Our Suggestions for Recreation and Parks**

# **CROWNSVILLE: A HEALING PLACE FOR ALL**





# Crownsville Hospital and Civil Rights: From Tragedy to Transformation (1940s-1950s)

When major media exposed Crownsville Hospital's overcrowding, underfunding and understaffing in the early 1950s, concerns for patient welfare were answered from within the African American community. Transformation began as more Black staff members were hired and through community-led initiatives that reformed patient standards of care. This period of community and staff empowerment led to much-needed facility growth and improvement, including modern medical and psychiatric services at Crownsville Hospital.

Following the Great Depression, Crownsville became severely overcrowded. Combined with underfunding and chronic staff shortages, patient conditions during this period were horrific. In 1949, a series of exposes in the Baltimore Sun and the Baltimore Afro-American detailed incidents of patient neglect and abuse. Three patient riots in the understaffed "C" Building between 1950-55 made headlines, and underscored the need for radical transformation in the facility's resources, personnel, and capacity.

In the wake of the riots and newspaper coverage, public outcry led to the most substantial physical expansion in the hospital's history. Between 1948 and 1954, 42 new structures were added to provide support for what was at the time considered cutting-edge psychoanalytical and drug treatments, as well as expanding physical plants, patient and staff residences, and agricultural support buildings.



Beginning as early as the 1930's, local papers like the "Baltimore Sun" and the "Baltimore Afro-American" began reporting on the overcrowding, abuse and inhumane conditions suffered by patients at Crownsville Hospital. The ongoing reporting, combined with an institutional communication blackout about patient updates and welfare, resulted in widespread community distrust, fear, and ultimately, backlash. Ultimately the Black community was galvanized by the shocking headlines and stories from inside the facility, and came together to transform the hospital into a modern, integrated psychiatric facility.

The most important transformation came in the form of community activism and empowerment. The African American community became involved in the affairs of Crownsville as church groups and families of patients gained access to the Hospital, bringing increased public accountability to the standard of patient care. The Crownsville Auxiliary, founded in 1954 in collaboration with the NAACP, brought Black and white female volunteers to the campus where they supported—and observed—day to day activities. The group was also instrumental in pushing to diversify Crownsville's mostly-white staff and physicians—the first African American psychiatrist, Dr. Vernon Sparks, had only recently been hired in 1949.



Gwendolyn Lee chatting with a staff member as some of Crownsville's Black nurses walk past patients at work, 1953.

Dr. Jacob Morgenstern (below, left), a Holocaust survivor, became Superintendent in 1947 and ushered in a new era of reform, integration, and humanity at Crownsville. In 1948, he hired the facility's first Black medical staff member, Dr. Vernon Sparks, as a staff psychologist. He also hired Gwendolyn Lee (above, right) as Supervisor of the Social Services Department, which supported some 1,800 patients in 1949. Lee hired African Americans to staff the social services department, which during her tenure, was entirely Black.



Dr Jacob Morgenstern cuts the ribbon with staff members for the facility's new beauty parlour, 1949.



Anne Arundel County  
OFFICE OF  
PLANNING AND ZONING





# Crownsville Hospital and Civil Rights: A New Era of Healing (1960s-1970s)

Civil Rights, the evolution of mental health care and the push for racial equality transformed Crownsville Hospital in the 1960s and 70s. As community activism improved conditions throughout the hospital, civil rights rulings led to the integration of the facility in 1962. Nationally, treatment of mental health began to shift away from centralized large facilities, and in response, Crownsville's first community care units were established in 1969.

As the hospital began to reform on a grassroots level, great national changes began to shape Crownsville in ways that would radically impact the patients, the facility, and the fundamental approach to mental health care.

The American struggle for civil rights touched communities around the country as organizers and freedom fighters protested inequality—Crownsville Hospital included.

Civil rights also shaped the institution from the inside. Efforts to expand Black empowerment at Crownsville continued to improve the facility and patient conditions, and after failing to meet American Psychiatric Association operating standards for almost 10 years, Crownsville finally gained accreditation in 1962. That same year the patient population integrated, with adolescents first and adults in 1963.



**FASTING FOR EQUALITY** — Discussing the ways to continue to fast until freed of trumpeting charges, Wallace Nelson, the wife Mrs. Juanita Nelson and Miss Rose Robinson, met with delegates from Baltimore on Tuesday. Short examination at Crownsville proved they were not mentally deficient. Trial on Thursday refused to accept guilty verdicts with prejudice and were to be sentenced this morning (Friday).

**Elkton Three hoped 'to say something' to Marylanders by long fast in jail**

At the height of the Civil Rights protests in September 1961, three Black activists were arrested for ordering a meal at a segregated restaurant near Elkton, Maryland. In protest, while held at the Cecil County jail, they initiated a hunger strike. After 12 days the activists were transferred to Crownsville State Hospital. Despite vocal opposition from white police and officials, the activists were evaluated and found mentally sound by Crownsville psychiatrists. The three were later freed with suspended fines.

Nationally, mental health care evolved from large institutions like Crownsville to community-centered care. In 1961, the hospital established its first outpatient clinic in Baltimore to provide support for discharged patients. The Community Mental Health Act in 1963 spurred further changes, and under the leadership of Dr. George Phillips, the first Black Crownsville superintendent, four community care units were established in Anne Arundel, St. Mary's, Charles and Calvert Counties in 1969.

Another big shift was in Crownsville's use of patient agricultural, trade, construction and custodial labor. Under the guise of "industrial therapy," patients had worked for the hospital since its establishment. In the early 1970s, the Department of Labor ruled that patients must be paid for all work, and for the first time in 60 years, unpaid patient labor in the fields and the workshops stopped.



Under Phillips' tenure as Superintendent, the staff continued to diversify, with regular Red Cross and other professional development classes to offered to new staff members like this Auxiliary group from XXXX.



Dr. George Phillips, the first Black Superintendent of Crownsville Hospital, was an accomplished physician who sought to modernize the facility. A 1948 Howard University graduate, Phillips arrived at Crownsville in 1955 for his residency, later becoming a staff psychiatrist, chief of psychiatric services and clinical director. He became Superintendent in 1965, serving until 1980. Phillips, a native of Tobago who became a US citizen in 1960, is credited broadening professional opportunities at Crownsville for a generation of medical professionals that hailed from across the world.



**Anne Arundel County**  
OFFICE OF  
PLANNING AND ZONING







**THANK YOU!**  
**Lyndra & Faye**



# Crownsville Hospital Memorial Park Trails Concept Plan

Working Draft  
February 21, 2024



# Guiding Principles

*In order to promote non-vehicular travel and recreation to, from, and within the park:*

- People of all ages and abilities should be able to travel to, from and within CHMP without a car (walk, bike, assistive device, scooter, etc)
  - ADA-compatible paved shared-use paths (SUP) that connect to the planned South Shore Trail
- Trails for both transportation and recreation
- ADA-compliant paved trail connection to the Anne Arundel Trail Network
- Natural surface or gravel trail network for hikers, runners, cyclists [and equestrians?] in wooded areas of CHMP
- Multiple natural surface connections from CHMP to Bacon Ridge and Waterworks trails for hikers, runners, cyclists
- Consider paved and/or natural surface trails for adaptive device users
- Wayfinding signs that direct trail users to attractions, points of interests and other trails
- An interpretive trail tour that explains the history, present, and future of CHMP

# Trails and Trail Users



**Adaptive Devices**



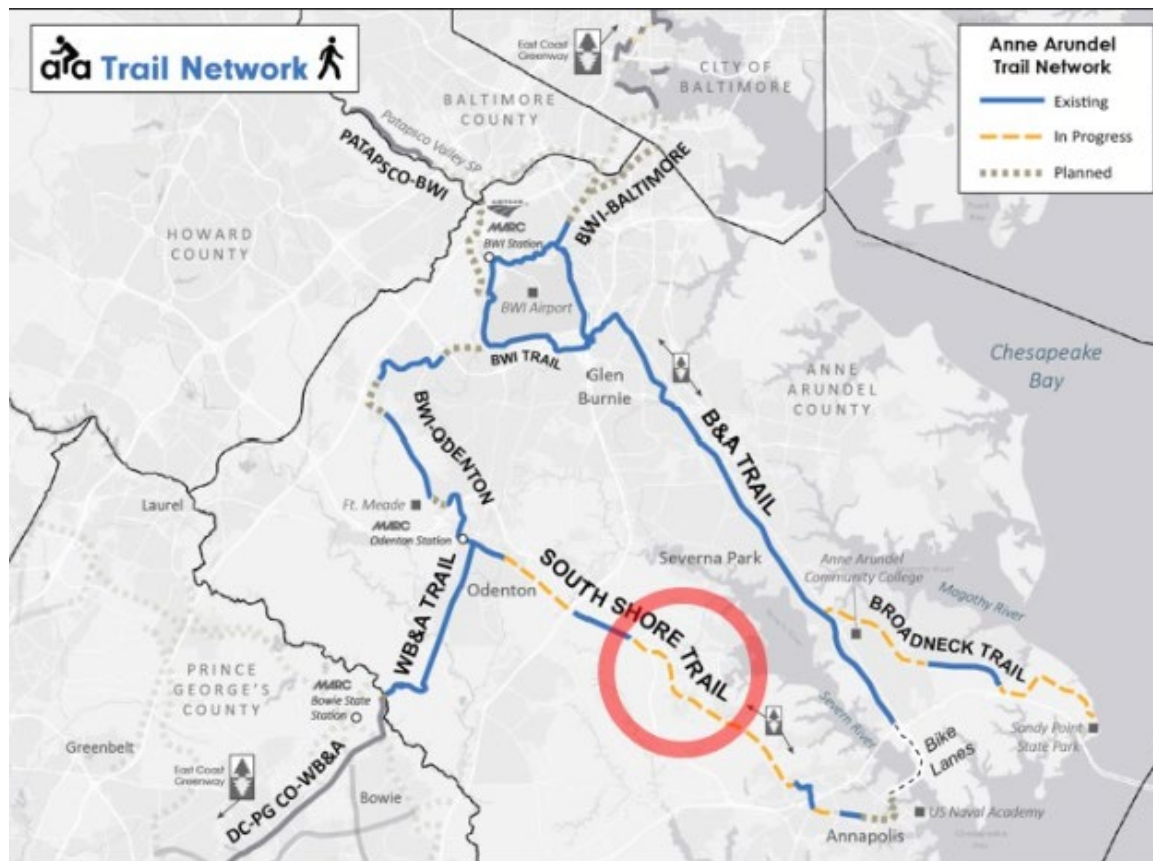
**Shared-Use Path (SUP)**



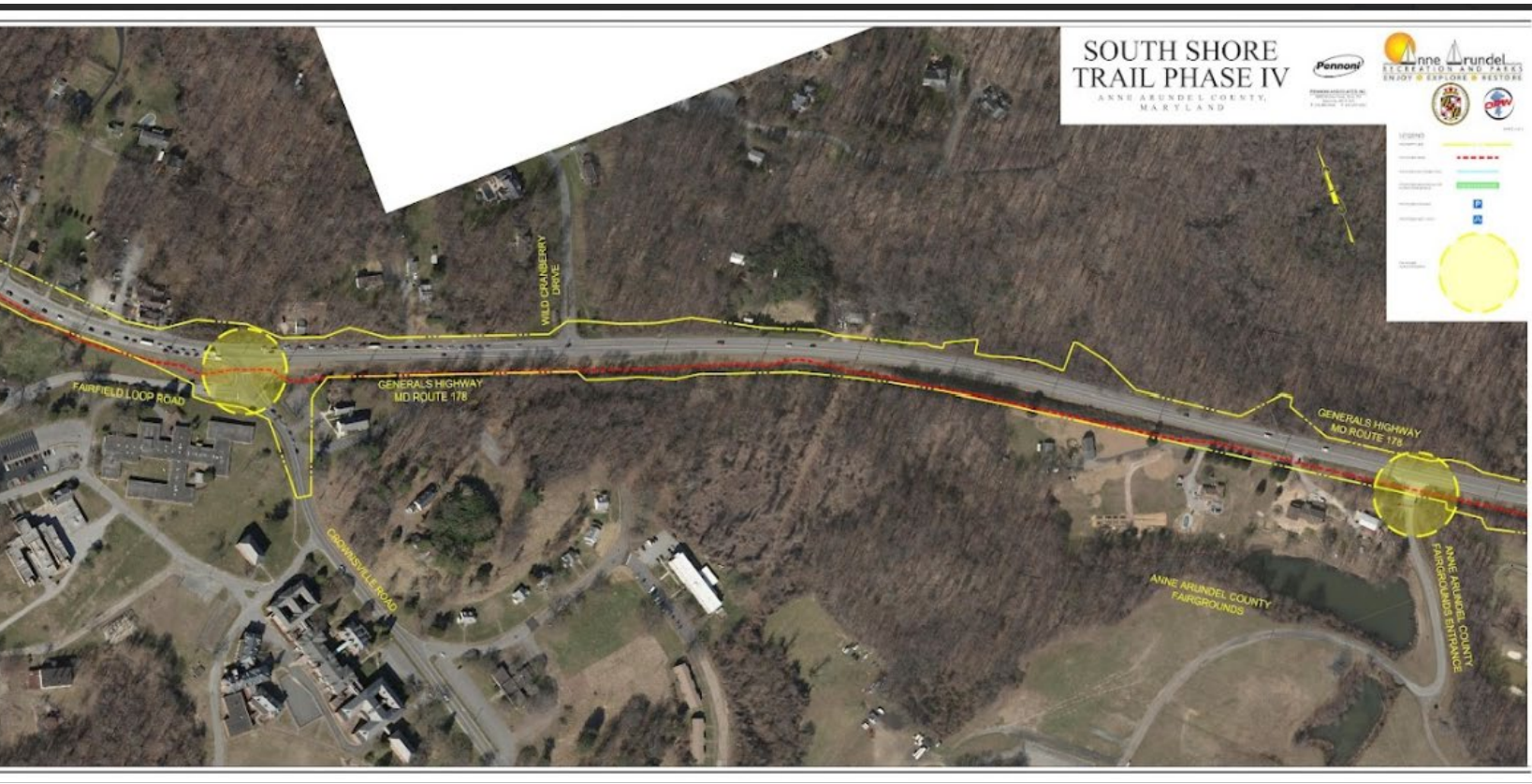
**Natural Surface**



CHMP is located along the planned South Shore Trail,  
Part of the envisioned paved Anne Arundel Trail Network

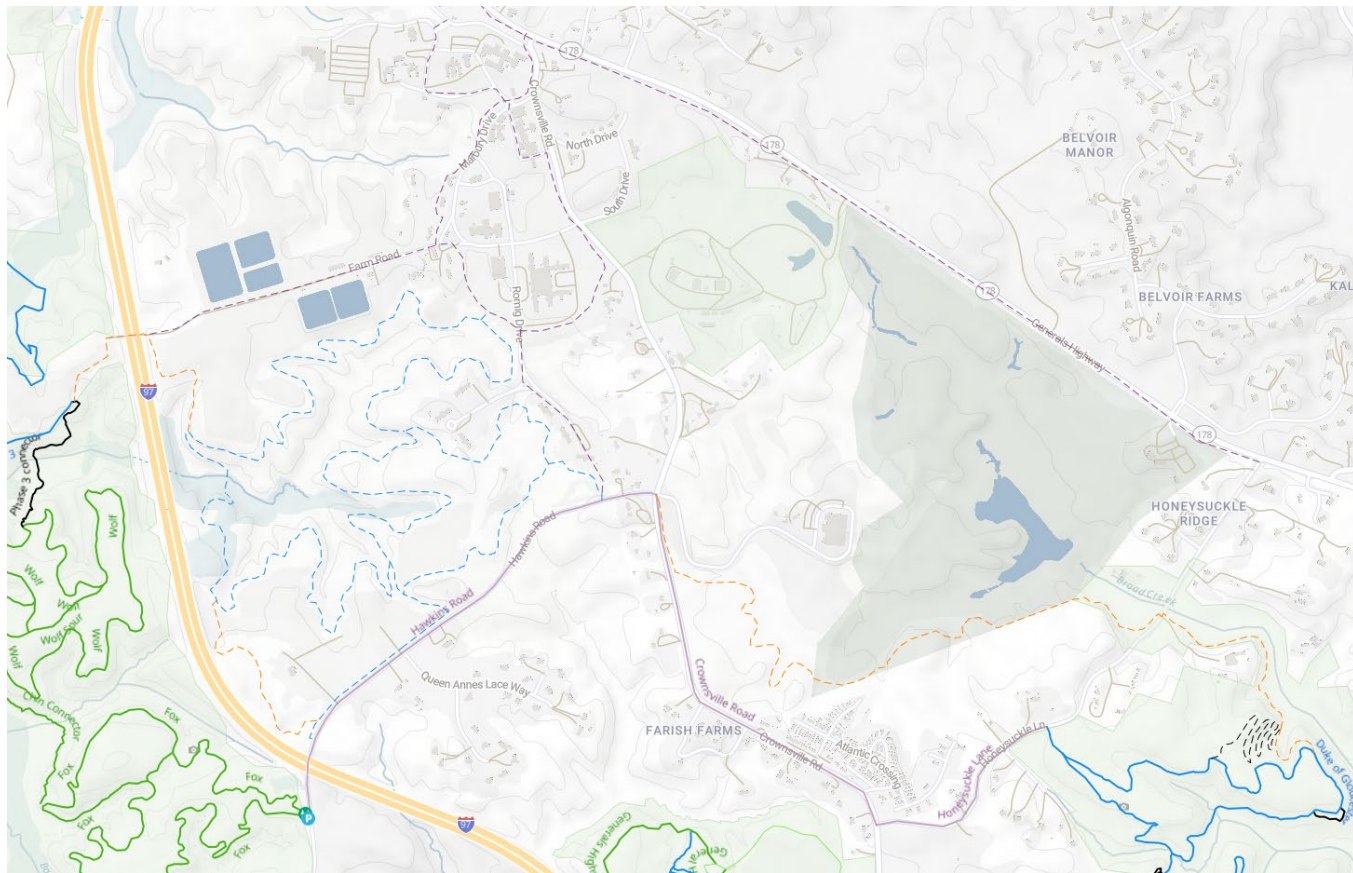


# South Shore Trail Original Alignment Crosses Crownsville Rd. on South Side of Generals Hwy





# Concept for Paved & Natural Surface Trails within CHMP and Connections to the South Shore Trail and Bacon Ridge Trails



## Key

Solid Lines = Existing Natural Surface Trails and Road Connections

Dashed Lines = Proposed/Conceptual Trails

Purple = Paved

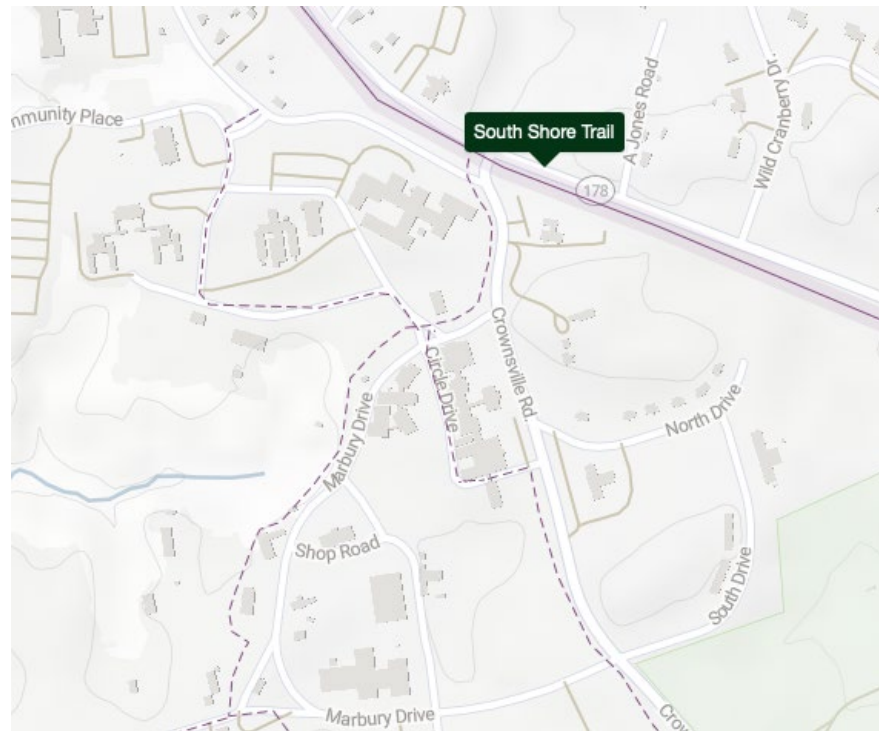
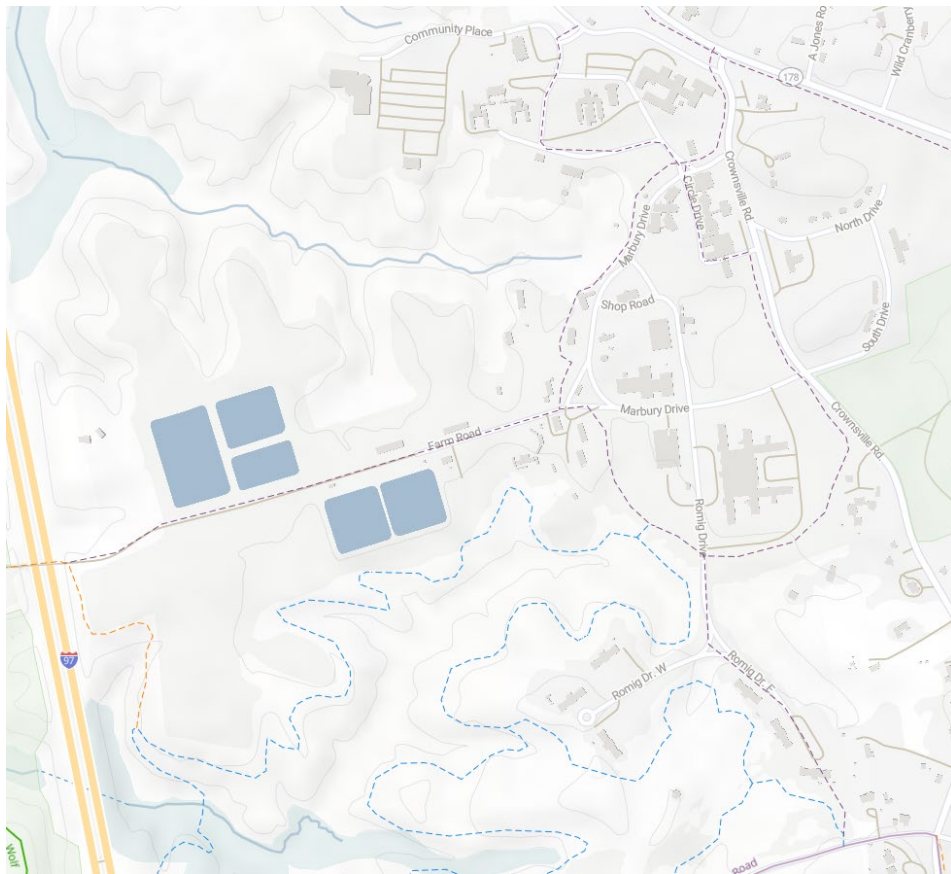
All Other Colors = Natural Surface

**NOTE:** Most of the proposed trails in this presentation are conceptual and have not been walked. While these conceptual outlines follow contour lines on public maps and have been cross referenced with LIDAR data, any final trail alignment will need to be confirmed via an on-site trail assessment reviewed and approved by relevant land managers.





# Conceptual Paved Shared Use Path Network (Purple)



# Conceptual Natural Surface Trail Network (Blue)





# Conceptual Natural Surface Trail Network (Blue)



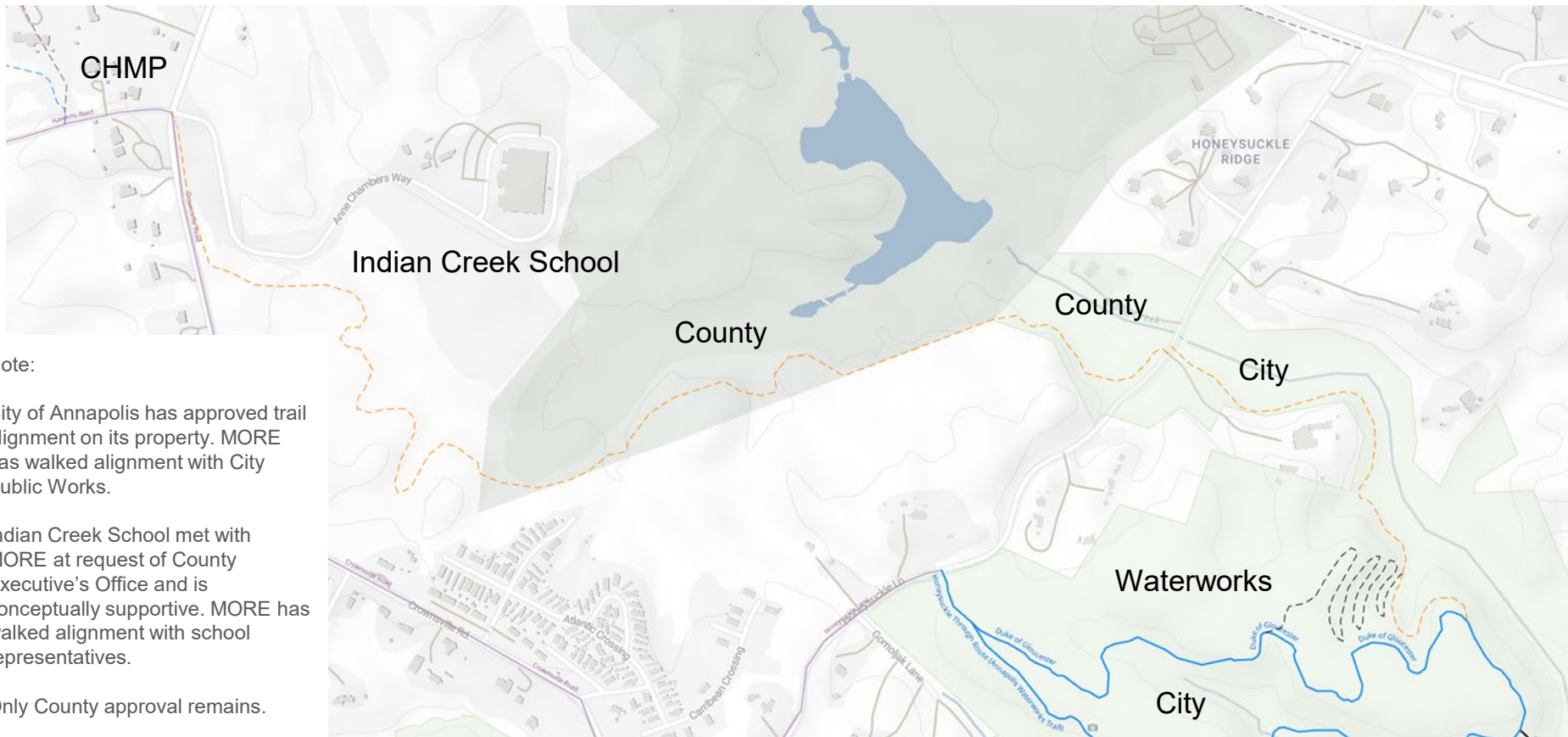
Red line =  
approximate  
SRLT/MET easement  
area

# Conceptual Natural Surface Trail Connections (Bacon Ridge)

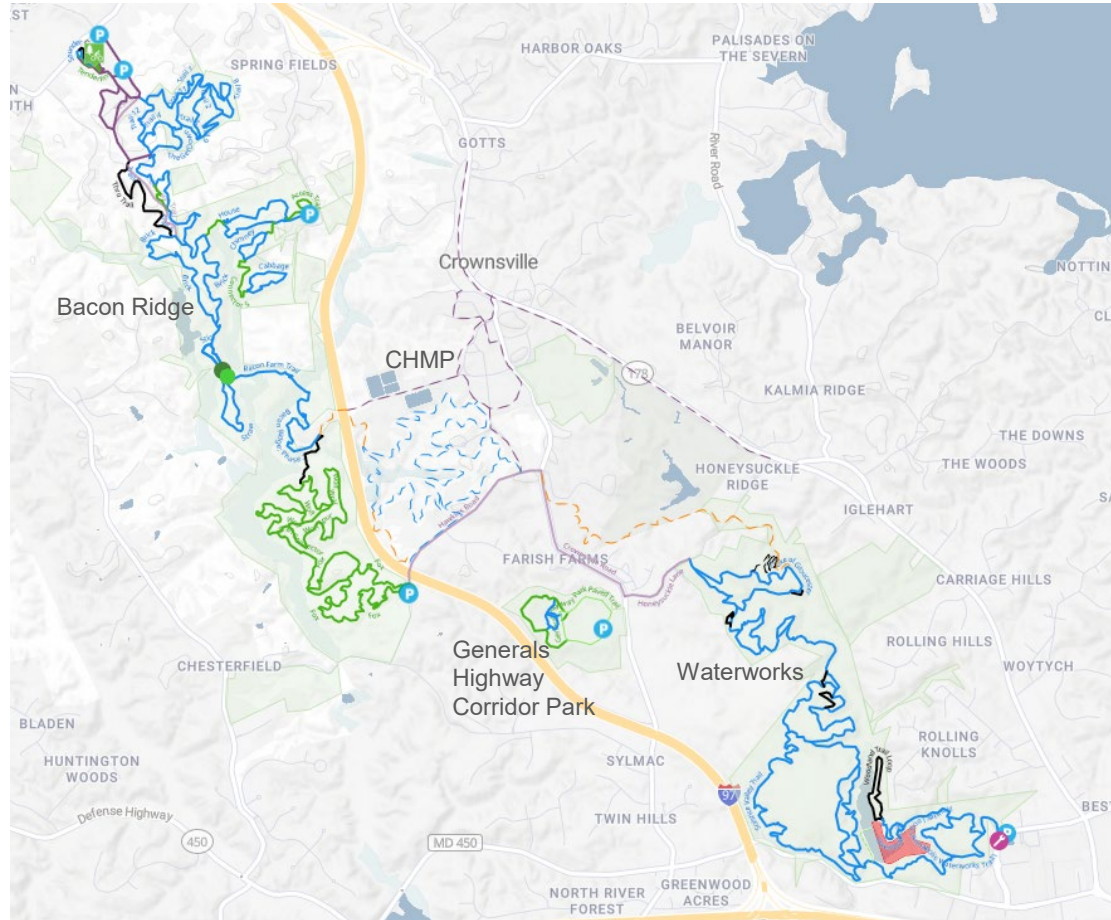




# Conceptual Natural Surface Trail Connections (Waterworks)



# Regional Overview





# Natural Surface Trail Road Crossings Precedent



# Children's Bike Safety Park With Interpretive Art



- Safety Course for kids of all abilities to practice safe walking, biking, mobility
- Add interpretive art appropriate to site with students and volunteers
- Shown at left is at Lindale MS, Linthicum



# Paved Pump Track



- Compact paved cycling skills course suitable for children and adults.
- Example paved pump track projects in Maryland include Wheaton Regional Park (Montgomery County) and City of Frederick

# Events & Programs

- Utilize Trails, Parking and Other Facilities for events and programs such as
  - Nature Tours for hikers, birders, bikers and adaptive device users
  - History / Cultural remembrance ceremonies, tours, and educational events
  - Bicycle events such as
    - Kids Bike Safety
    - Youth/Adult MTB events (NICA Youth League Cycling)
    - Cyclocross
- Considerations
  - Parking constraints
  - Trail volume and maintenance
  - Invasive species control needs







STUART PITTMAN COUNTY EXECUTIVE  
JESSICA LEYS, DIRECTOR  
1 HARRY S. TRUMAN PARKWAY  
ANNAPOLIS, MD 21401  
410-222-7867



## **Crownsville Hospital Memorial Park**

### **R&P Subcommittee-Meeting #4 Minutes**

21 February 2024 / 6:00 PM / R&P Conference Room

#### **Attendees**

In-person stakeholders: Scott Hymes (SH) (Chairman), Mike Pozdol (MP), Dave Beugelmans (DB), Jim Lighthizer (JLi), Jon Korin (JK), Bob Agee (BA), John Faber (JF), Mike Carter (MC),

Online Stakeholders : Jawann Wills (JW), Sarah Knebel (SK)

Design Team: Cecily Bedwell (CB) (online),

County Staff: Erica Matthews (EM), Jessica Leys (JLe), Kristina Piergrossi, Jessica Hardy (JH), Michael Stringer (MS) (online)

Guests: Lyndra Marshall, Faye Belt, Roger Marshall

Not Present: Gene Deems (GD)

- I. **Call to Order**: The meeting was called to order at 6:03 pm.
- II. **Review and approval of the meeting minutes** from Meeting #3.
- III. **Welcome/Guest Presentation/Oral History of Crownsville**

EM opened with introductions of honored guests for the meeting, Lyndra Marshall and Faye Belt, who were present to share with the committee some of the Crownsville Hospital history as it related to the people who lived there, worked there, and grew up on the hospital grounds and in the surrounding area. Ms. Marshall's presentation included information about her relationship with Rec and Parks and her involvement in the opening of HotSox Field. As a genealogist, she spends her time researching the families, churches, schools, organizations, and communities of Maryland, specifically Anne Arundel County, home of her ancestral roots. She is committed to the Crownsville project and has over 86 people ready to tell their stories of Crownsville. Ms. Marshall then introduced Faye Belt. Ms. Belt's mother was a Nurse at Crownsville, and she was a nurse aide when she worked there herself. Many of the stories she shared involved recreational elements, similar to the subcommittee's list. EM commented that almost all of the committee ideas were a part of the stories she told.

Some of the recreational activities were: camping, cook-outs, hiking, and exploring the property, including the stream, reading, corn fields, grove/outdoor theater, baseball on the Ball Field, Music (rhythm sticks, dancing), movie night, other events in Campanella,

concerts, outdoor games, hopscotch, checkers, chess, as well as playing on the playground. The campus was self-reliant through its farming of vegetables and animals, and agricultural activities. They grew and canned food, there were horses on the property and there were numerous gardens. The residents sewed, worked on quilts, ran a hair salon, and repaired shoes and furniture. There were community days, family days, and parades on the campus.

The WBA train did have a stop near or on the property.

Nature was healing.

Aside from the recreational elements, Ms. Belt and Ms. Marshall want everyone who visits the park to remember somehow and experience what life was like at Crownsville. Crownsville was a part of the community. There is beauty in the campus. Honor the staff with statues, monuments, and perhaps even a model hospital ward. A museum and using auditory components in key areas (hospital services, notable staff, cemetery, patient life, education/college credit course work, and the history of the enslaved on the property) should also be incorporated.

They believe that this should be a transition from darkness to light.

#### **IV. Trails Update**

DB and JK presented a proposed concept plan for the CHMP Trails. The overall focus of the plan presented is to promote non-vehicular travel and recreation to and from the park for people of all ages and abilities via a trail system for transportation and recreation. The plan provided a regional overview and detailed:

- Concepts for paved and natural surface trails within CHMP and connections to the South Shore Trail and Bacon Ridge Trails.
- A Conceptual paved shared-use Path Network
- A Conceptual Natural Surface Trail Network
- Conceptual Natural Surface Trail Connections to Bacon Ridge and Waterworks

Additionally, the plan provided a precedent for natural surface road crossings, details on a Bike Safety Park, and a Paved Pump Track.

#### **V. Chairman Update**

SH summarized the Public Meeting held on February 13, 2024. Seemingly, everyone involved in the project is on the same page regarding the importance of input from the Community. The R&P Committee must break down the meeting report and explore the public comments and recommendations provided.

#### **VI. Action Items**

- A. EM needs to post the impervious calculations.



- B. EM Follow up on the campus capacity question.
- C. EM will continue to track the progress of the building assessment report
- D. EM will share the comments received from the county-wide public engagement as they become available.

**VII. Next meeting 3/13 at 6 pm at R & P Headquarters, 1 Harry S. Truman Pkwy, Annapolis, MD 21401**

**CHMP R&P Subcommittee**  
**Appendix A5**  
**Meeting #5 Documents**





STEUART PITTMAN COUNTY EXECUTIVE  
JESSICA LEYS, DIRECTOR  
1 HARRY S. TRUMAN PARKWAY  
ANNAPOLIS, MD 21401  
410-222-7867



## **Crownsville Hospital Memorial Park**

R&P Subcommittee-Meeting #5 Agenda

13 March 2024 / 6:00 PM / R&P Conference Room

- I. **Call to Order**
- II. **Review and approval of the meeting minutes from Meeting #3.**
- III. **Chairman Update- Scott Hymes**
- V. **New business**
  - A. Review of the 2/13/24 public meeting
  - B. Additional public engagement
- VI. **Open Discussion**
- VII. **Next meeting 4/17 at 6pm at 1 Harry S. Truman**



STEWART PITTMAN COUNTY EXECUTIVE  
JESSICA LEYS, DIRECTOR  
1 HARRY S. TRUMAN PARKWAY  
ANNAPOLIS, MD 21401  
410-222-7867



## **Crownsville Hospital Memorial Park**

### **R&P Subcommittee-Meeting #5 Minutes**

13 March 2024 / 6:00 PM / R&P Conference Room

#### **Attendees**

In-person stakeholders: Scott Hymes (SH) (Chairman), Dave Beugelmans (DB), Jim Lighthizer (JLi), Jon Korin (JK), Jawaan Wills (JW), Sarah Knebel (SK),

Online Stakeholders: Mike Carter (MC), John Faber (JF)

Design Team: Cecily Bedwell (CB) (online),

County Staff: Erica Matthews (EM), Kristina Piergrossi, Jessica Hardy (JH)

Not Present: Gene Deems (GD), Bob Agee (BA), Mike Pozdol (MP)

- I. **Call to Order**: The meeting was called to order at 6:30 pm.
- II. **Review and approval of the meeting minutes** from Meeting #4.
- III. **Chairman Update-Scott Hymes**

Scott Hymes gave the floor to EM. EM gave an update on the To-Do list for the group. The current schedule requires a report from the R&P Subcommittee in May. EM reviewed the report format. The working documents are in the group meeting folder, including impervious surface data and structural reports. All committee members were asked to provide goals and organize them according to the themes before the next meeting. Additionally, the group was reminded that each member's required biography is needed and will become a part of the final committee report. The committee believes that the overall theme/ should be a transition from darkness to light.

#### **IV. Public Outreach**

SH polled the group's position on the need for additional Public Outreach. He referenced the close look at trails, the CHMP property (structures), and the comments from the public meetings. Seemingly, there is no disparity or random ideas. The group decided that since public outreach will be available during the development process, there is no need for a separate R&P outreach campaign. Feedback received to date includes lists for use or services for specific buildings; the County has different locations where some services can be provided, but that should not be the focus. The group decided to stay on the topic of Recreation, recognizing that there will be shared spaces.



## **V. Planning Discussion**

The group began drafting their recommendations. EM asked the group to recall the planning session from Meeting #3. Focus on broad statements, e.g., Field House, MP Fields, Amphitheater, Museum, Communal Areas, Adaptive Trails. Goals need to be achievable and measurable, and amenities should be available for people of all abilities.

Capacity and scale should also be considered.

CB highlighted the Structural Assessment done by KBI. Buildings are all ranked using the same criteria. The list was refined by the structural integrity of the structure—a demo list was established from there. Design Collective will decide where the amenities will fit best within the overall design of CHMP.

Design Collective is trying to balance the requests and goals of all Stakeholders. She noted that the Trail Plan had already been incorporated and that there would be a second public workshop. Once the committees present their goals, the larger Committee will begin their decision-making, and costing will begin.

The group discussed using volunteers to save labor costs and various Bond Initiatives and Grants for additional funding.

## **VI. Action Items**

- A. The committee will update the list of recommendations and prioritized goals.
- B. Committee members will provide the biographical data for the report.
- C. R&P will begin formatting the final report.

**VII. Next meeting 4/17 at 6 pm at R & P Headquarters, 1 Harry S. Truman Pkwy, Annapolis, MD 21401 (This meeting was canceled)**

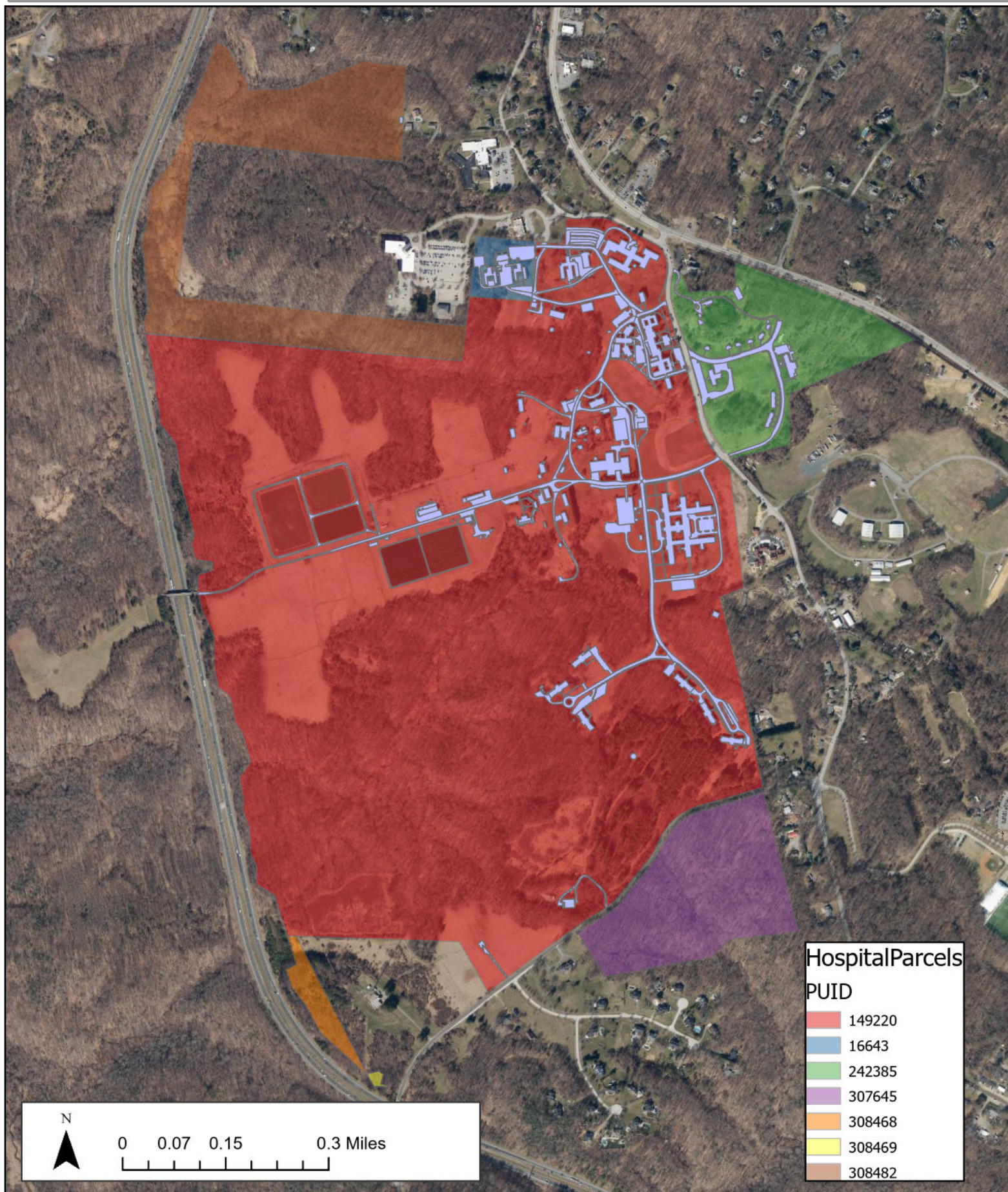
**Crownsville Hospital Site Impervious**

Parcel Color	Parcel (PUID)	2020 Impervious (sq ft)	DRAFT 2023 Impervious (sq ft)	Associated Tax Account(s) in County Parcel Layer
Red	149220	1,345,189	1,355,554	200011033710
				200090255244
Blue	16643	88,739	89,849	200090040969
Green	242385	181,244	183,327	200011033710
				200090255482
				200090255244
Purple	307645	0	0	200090255244
				200011033710
Orange	308468	0	0	200090255976
Yellow	308469	0	0	200090255976
Brown	308482	1,242	1,242	200090255975
TOTAL		1,616,414	1,629,972	

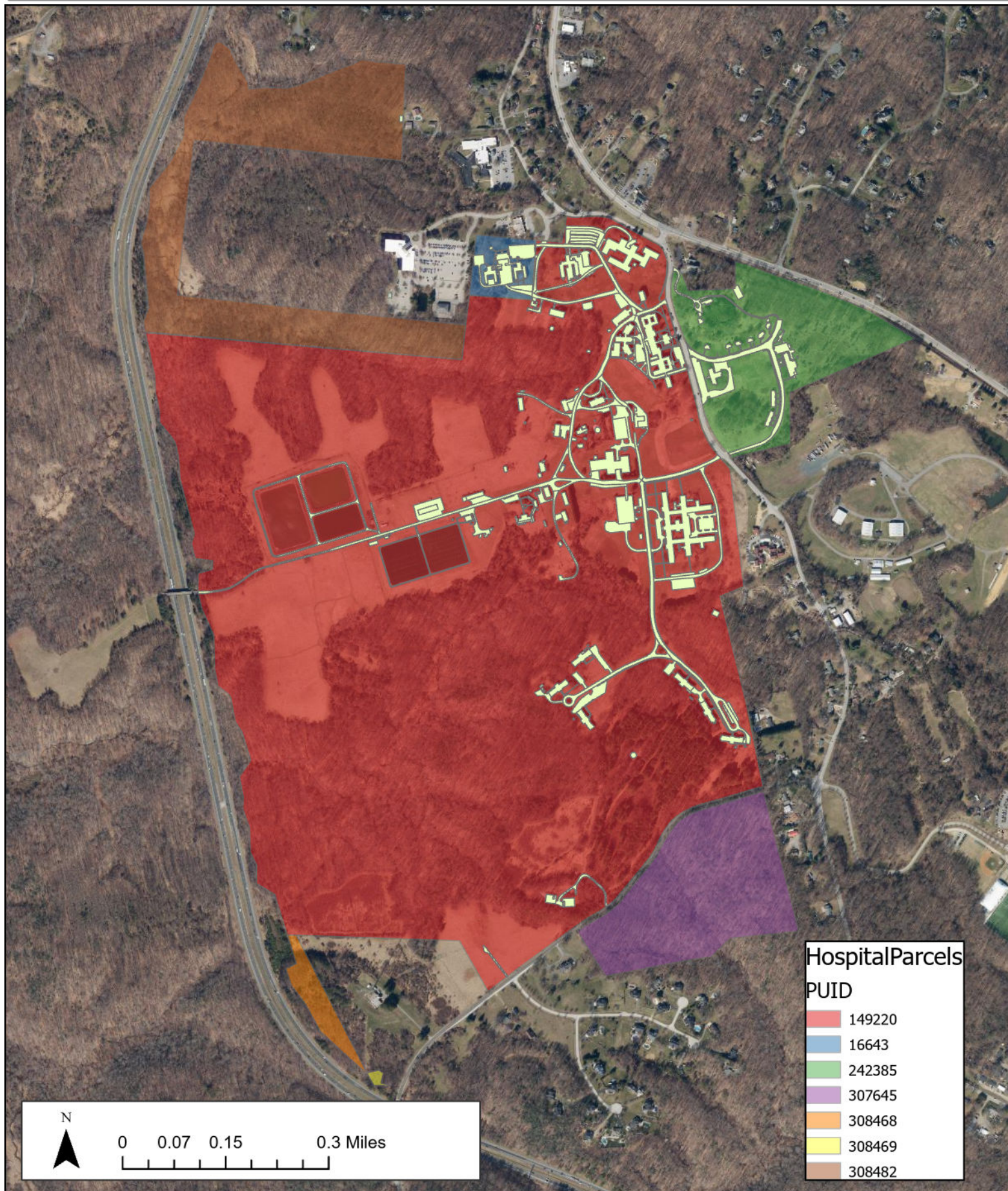


Tax Account Owner	Tax Account Description
STATE OF MARYLAND	429.5714 AC, 1400 GENERALS HWY, CROWNSVILLE STA HOSPITAL
ANNE ARUNDEL COUNTY	454.0498 ACS, 1520 CROWNSVILLE RD, CROWNSVILLE STA HOSPITAL
ANNE ARUNDEL COUNTY	5 ACRES, 41 45 COMMUNITY PL, CROWNSVILLE HOSPITAL
STATE OF MARYLAND	429.5714 AC, 1400 GENERALS HWY, CROWNSVILLE STA HOSPITAL
ANNE ARUNDEL COUNTY	LOT, 26 MARBURY DR, CROWNSVILLE STA HOSPITAL
ANNE ARUNDEL COUNTY	454.0498 ACS, 1520 CROWNSVILLE RD, CROWNSVILLE STA HOSPITAL
ANNE ARUNDEL COUNTY	454.0498 ACS, 1520 CROWNSVILLE RD, CROWNSVILLE STA HOSPITAL
STATE OF MARYLAND	429.5714 AC, 1400 GENERALS HWY, CROWNSVILLE STA HOSPITAL
STATE OF MARYLAND	2.9214 AC, GENERALS HWY, CROWNSVILLE STA HOSPITAL
STATE OF MARYLAND	2.9214 AC, GENERALS HWY, CROWNSVILLE STA HOSPITAL
STATE OF MARYLAND	46.5894 AC, GENERALS HWY, CROWNSVILLE STA HOSPITAL











**CHMP R&P Subcommittee**  
**Appendix A6**  
**Meeting #6 Documents**





STEUART PITTMAN COUNTY EXECUTIVE  
JESSICA LEYS, DIRECTOR  
1 HARRY S. TRUMAN PARKWAY  
ANNAPOLIS, MD 21401  
410-222-7867



## **Crownsville Hospital Memorial Park**

### **R&P Subcommittee-Meeting #6 Agenda**

May 21, 2024 / 6:00 PM / R&P Conference Room

- I. Call to Order**
- II. Review and approval of the meeting minutes from the March Meeting**
- III. Chairman Update- Scott Hymes**
- V. New business**
  - A. Report - Draft Recommendations need to be completed.**
- VI . Open Discussion**
- VII. Next meeting 6/5/24 at 6pm at 1 Harry S. Truman**



STEWART PITTMAN COUNTY EXECUTIVE  
JESSICA LEYS, DIRECTOR  
1 HARRY S. TRUMAN PARKWAY  
ANNAPOLIS, MD 21401  
410-222-7867



## **Crownsville Hospital Memorial Park**

### **R&P Subcommittee-Meeting #6 Minutes**

May 21, 2024 / 6:00 PM / R&P Conference Room

#### **Attendees**

In-person stakeholders: Scott Hymes (SH) (Chairman), Mike Carter (MC), Dave Beugelmans (DB), Jim Lighthizer (JLi), Jon Korin (JK), Jawaan Wills (JW), Sarah Knebel (SK), Bob Agee (BA), Mike Pozdol (MP)

Online Stakeholders: None

Design Team: Brian Reetz (online),

County Staff: Erica Matthews (EM), Jessica Hardy (JH)

Not Present: Jim Lighthizer (JLi), John Faber (JF)

- I. **Call to Order**: The meeting was called to order at 6:06 pm.
- II. **Review and approval of the meeting minutes** from Meeting #5.
- III. **Chairman Update-Scott Hymes**

None

#### **IV. New Business**

- May 16, 2024, Crownsville Hospital Memorial Park Affected Communities Workshop Meeting

JK- Provided an update on the May 16, 2024, Crownsville Hospital Memorial Park Affected Communities Workshop Meeting. The workshop was well attended and the format changed from a workshop to a Town hall. The public was given two minutes to provide testimony. There was a sentiment that this group was being overlooked and their ideas were not being heard. This group wants to be heard and support the recommendations of the Crownsville Caratakers United group and the report.

SH- Indicated that he had participated in a different meeting with members of the community led by Ms. Belt. He said that this group had asked for recommendations. He has not seen the final recommendations.

DB—There are so many layers to this process, and there is a limit to what the subcommittee can reasonably be expected to do. These concerns should be addressed at a higher level.



The sub-committee agreed that this was something beyond their capabilities to resolve.

(Not Discussed- EM reached out to the leadership of the Masterplan committee to see if the report was available for review. As of 5/17/24, the Crownsville Caretakers United indicated that they were in the process of working through their recommendations for the County and will communicate them to the County in the near future. EM also reached out to Mrs. Marshall to see if she had additional comments that she wanted to submit after her presentation on Feb 21, 2024, to this subcommittee. As of 6/5/24, no response was received.)

**V. Planning Discussion**

The group continued drafting their recommendations.

**VI. Action Items**

- A. The committee will update the list of recommendations and prioritized goals.
- B. R&P will begin formatting the final report.

**VII. No additional meetings.**

**CHMP R&P Subcommittee**  
**Appendix A7**  
**Meeting #7 Documents**





STEUART PITTMAN COUNTY EXECUTIVE  
JESSICA LEYS, DIRECTOR  
1 HARRY S. TRUMAN PARKWAY  
ANNAPOLIS, MD 21401  
410-222-7867



## **Crownsville Hospital Memorial Park**

### **R&P Subcommittee-Meeting #7 Agenda**

June 5, 2024 / 6:00 PM / R&P Conference Room

- I. Call to Order**
- II. Review and approval of the meeting minutes from Meeting #6.**
- III. Chairman Update- Scott Hymes**
- V. New business**
  - A. Complete the recommendations**
- VI . Open Discussion**
- VII. Next meeting: None. Thank you for your participation.**



STUART PITTMAN COUNTY EXECUTIVE  
JESSICA LEYS, DIRECTOR  
1 HARRY S. TRUMAN PARKWAY  
ANNAPOLIS, MD 21401  
410-222-7867



## **Crownsville Hospital Memorial Park**

### **R&P Subcommittee-Meeting #7 Minutes**

June 5, 2024 / 6:00 PM / R&P Conference Room

#### **Attendees**

In-person stakeholders: Dave Beugelmans (DB), Jim Lighthizer (JLi), Sarah Knebel (SK), Bob Agee (BA)

Online Stakeholders: Mike Carter (MC), John Faber (JF), Jon Korin (JK),

Design Team: Brian Reetz (BR) (online),

County Staff: Erica Matthews (EM), Kristina Piergrossi, Jessica Hardy (JH)

Not Present: Scott Hymes (SH) (Chairman), Bob Agee (BA), Mike Pozdol (MP), Jawaan Wills (JW),

- I. **Call to Order**: The meeting was called to order at 6:07 pm.
- II. **Review and approval of the meeting minutes from Meeting #6**
- III. **Chairman Update-Scott Hymes**- no report
- IV. **Planning Discussion**- The group continued drafting their recommendations.
- V. **Action Items**
  - A. Complete the report



### **Appendix B: Recommendations for Other Sub-Committees**

#	Requested Committee to review for inclusion	Recommendations	Priority
1	Infrastructure	Removal and decommissioning of the treated wastewater spray fields will provide more opportunities for meaningful use of the space.	High- This would result in more space for recreational use and possible preservation of open spaces or areas to be reforested.
2	Infrastructure	Determine the campus capacity based on potential constraints such as restrooms, parking spaces, SWM, and road capacity.	High- This helps determine just how much development is needed.
3	Recreational and Infrastructure	Connection to the County's recreational trail system should be prioritized. This should be coordinated with the recreational themes	High- This is highly probable with the current efforts of the ongoing South Shore Trail Capital project and the planned connection points at northern and southern campus properties
4	Infrastructure	Where possible, spaces should be used by multiple agencies that may need space for similar activities. An example would be a gym and indoor meeting spaces, which various agencies could use.	High—This would result in maximum space utilization while reducing the need for additional infrastructure such as parking, SWM, and utilities.
5	Infrastructure	Renovate the older apartments, cottages, or dormitories into usable space for overnight camps	Low- The DRP currently does not have an urban or overnight child-focused camp or operational model to execute this option fully
6	History	Create and implement a method for people to submit memorabilia for preservation and display.	High- This should be a priority so that oral histories and documents are preserved and available for viewing at the museum.
7	History	Consider the use of Docents to explain the cultural and historical significance of	Low- This may be cost-prohibitive, and the

		the property	museum may accomplish this goal
8	History	Consider the inclusion of interactive experiences in the museums	Medium- This may be cost-prohibitive, and this could be accomplished by other means like storyboards, exhibits, and photos displayed on the campus
9	ALL	Provide opportunities for Volunteers to help with the development of specialized areas.	Medium- This would have to be done in accordance with County policies and procedures.
10	History	Recreate one of the wards so visitors can see how a ward would have been set up with a nurse's station, patient rooms, social service offices, and other community workshops, training, and classes. This could also house recreational programming. Consider reusing the Meyer Building for this purpose.	Medium- This may be cost-prohibitive, and this could be accomplished by other means like storyboards, exhibits, and photos displayed on the campus
11	History	Share exceptional history about the contributions of black people to Anne Arundel County as well as to the site. Commonly neglected values include collaboration, connection and contribution. How are these patients and their families a part of the greater story of Anne Arundel County? Highlighting the victimization of vulnerable populations could be a trigger for visitors depending on the way it is framed.	High-All the stories need to be told.
12	History	Highlight the history of illness through the inhumane treatment of vulnerable populations by those in power. Create a call to action for the privileged through opportunities to uplift, honor, and celebrate change through wellness. Take value-based action steps.	High-All stories need to be told and efforts made so that those who can affect policy will not victimize other disadvantaged members of society.
13	Infrastructure	Within reason, preserve and reuse the	High- There is value in these



		historic buildings on site. There needs to be a proactive approach to reuse, not just demolition.	spaces.
14	Infrastructure	Provide a Community Center that can house various programs and activities. The center should include a gym, court games (basketball, pickleball, tennis, racquetball), and flex meeting spaces that can be used for workshops, crafts, and fitness classes. Consider the reuse of the Campanella Building for this use.	High—The structural report should dictate which building should be rehabilitated/renovated. If it was previously used for this purpose, the goal is to reuse it as much as possible.