

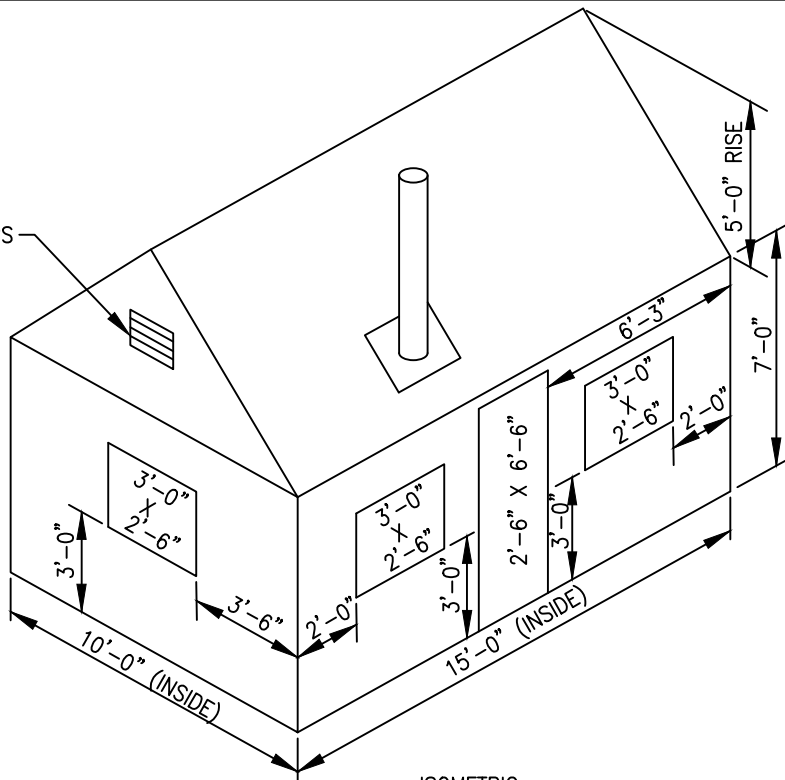
SECTION I
GENERAL

TABLE OF CONTENTS

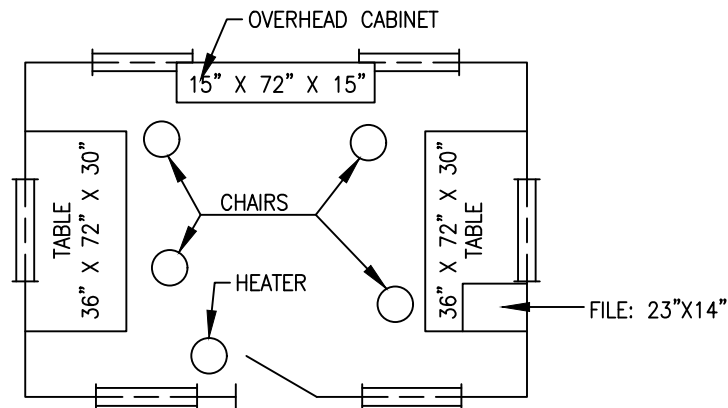
GENERAL

<u>No.</u>	<u>Title</u>
G-1	Engineer's Office Type 1
G-2	Engineer's Office Type 2
G-3	Engineer's Office Type 3
G-4	Engineer's Office Type 3 Trailer Substitute

STANDARD LOUVERS



ISOMETRIC



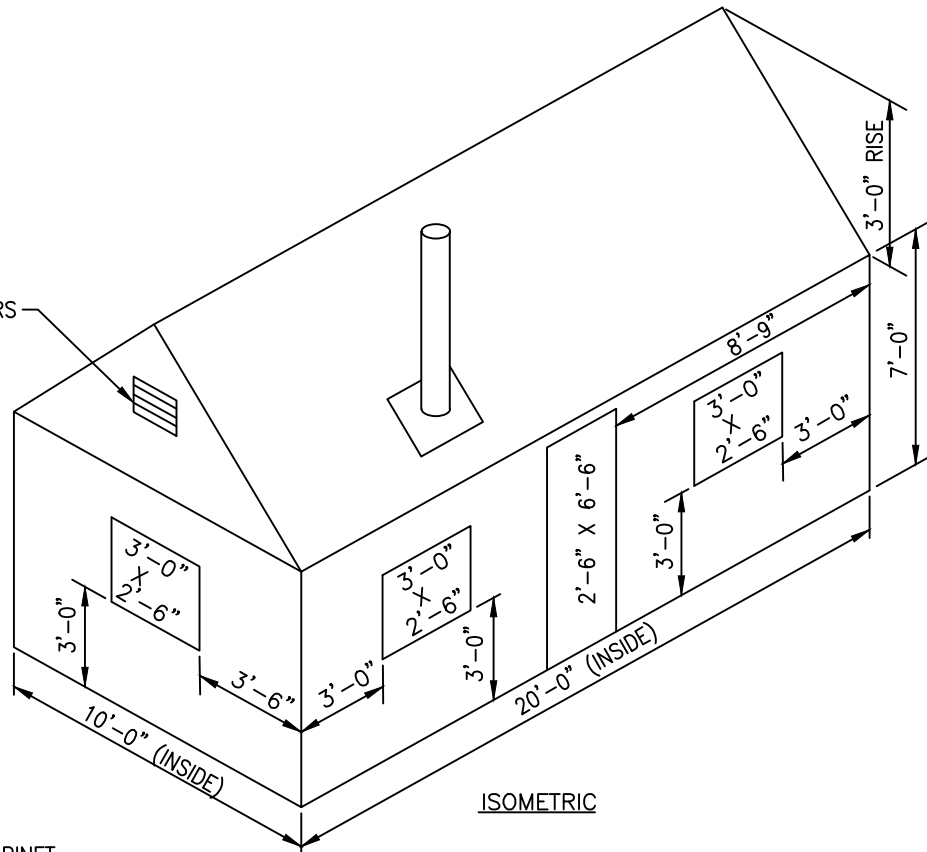
FLOOR PLAN

EXPLANATORY NOTES:

1. IN ADDITION TO THE EQUIPMENT INDICATED ABOVE, AIR CONDITIONING WILL BE REQUIRED, THE COST OF WHICH IS TO BE INCLUDED WITHIN THE LUMP SUM BID PRICE OF THE OFFICE, THE SYSTEM MUST BE CAPABLE OF MAINTAINING A TEMPERATURE OF 80° F DRY BULB AND APPROXIMATELY 50% RELATIVE HUMIDITY IN THE CONDITIONED AREA, WHEN OUTSIDE TEMPERATURES ARE 95° F DRY BULB AND 78° F WET BULB.
2. FURNITURE & FIXTURES INDICATED ARE BASIC. ADDITIONAL EQUIPMENT REQUIRED AND NOT SHOWN IS SO SPECIFIED IN SECTION 01200.02 OF THE SPECIFICATIONS.
3. DIMENSIONS FOR THE LENGTH MAY BE VARIED SO THAT WHEN MULTIPLIED BY THE WIDTH A MINIMUM INSIDE ARE OF 150 SQ. FT. WILL RESULT. MINIMUM HEIGHT TO BE 7'-0".
4. TOILET FACILITIES INTEGRAL TO THE STRUCTURE MAY BE CONNECTED TO AN APPROVED WATER SUPPLY AND TO A SEWER OR SEPTIC TANK SYSTEM, OR SEPARATE TOILET. TOILET FACILITIES MEETING THE REQUIREMENTS OF PARAGRAPH C.3 OF SECTION 01200.02 OF THE SPECIFICATIONS MAY BE PROVIDED.

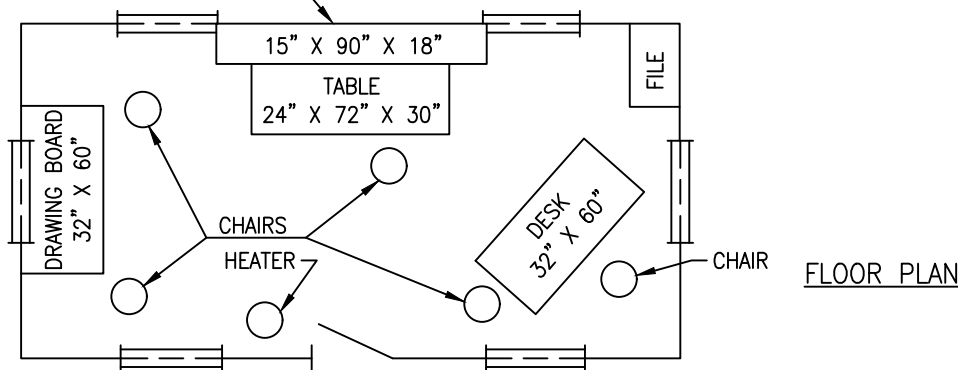
ANNE ARUNDEL COUNTY DEPARTMENT OF PUBLIC WORKS	APPROVED	STANDARD GENERAL DETAILS ENGINEER'S OFFICE TYPE I	REVISED	G 1
	_____		04/2024	
	CHIEF ENGINEER		_____	
	_____		_____	
	DESIGN ENGINEER		_____	
DATE:	_____			

STANDARD LOUVERS



ISOMETRIC

OVERHEAD CABINET



FLOOR PLAN

EXPLANATORY NOTES:

1. IN ADDITION TO THE EQUIPMENT INDICATED ABOVE, AIR CONDITIONING WILL BE REQUIRED, THE COST OF WHICH IS TO BE INCLUDED WITHIN THE LUMP SUM BID PRICE OF THE OFFICE, THE SYSTEM MUST BE CAPABLE OF MAINTAINING A TEMPERATURE OF 80° F DRY BULB AND APPROXIMATELY 50% RELATIVE HUMIDITY IN THE CONDITIONED AREA, WHEN OUTSIDE TEMPERATURES ARE 95° F DRY BULB AND 78° F WET BULB.
2. FURNITURE & FIXTURES INDICATED ARE BASIC. ADDITIONAL EQUIPMENT REQUIRED AND NOT SHOWN IS SO SPECIFIED IN SECTION 01200.02 OF THE SPECIFICATIONS.
3. DIMENSIONS FOR THE LENGTH MAY BE VARIED SO THAT WHEN MULTIPLIED BY THE WIDTH A MINIMUM INSIDE AREA OF 150 SQ. FT. WILL RESULT. MINIMUM HEIGHT TO BE 7'-0".
4. TOILET FACILITIES INTEGRAL TO THE STRUCTURE MAY BE CONNECTED TO AN APPROVED WATER SUPPLY AND TO A SEWER OR SEPTIC TANK SYSTEM, OR SEPARATE TOILET. TOILET FACILITIES MEETING THE REQUIREMENTS OF PARAGRAPH C.3 OF SECTION 01200.02 OF THE SPECIFICATIONS MAY BE PROVIDED.

ANNE ARUNDEL
COUNTY
DEPARTMENT OF
PUBLIC WORKS

APPROVED

CHIEF ENGINEER

DESIGN ENGINEER
DATE:

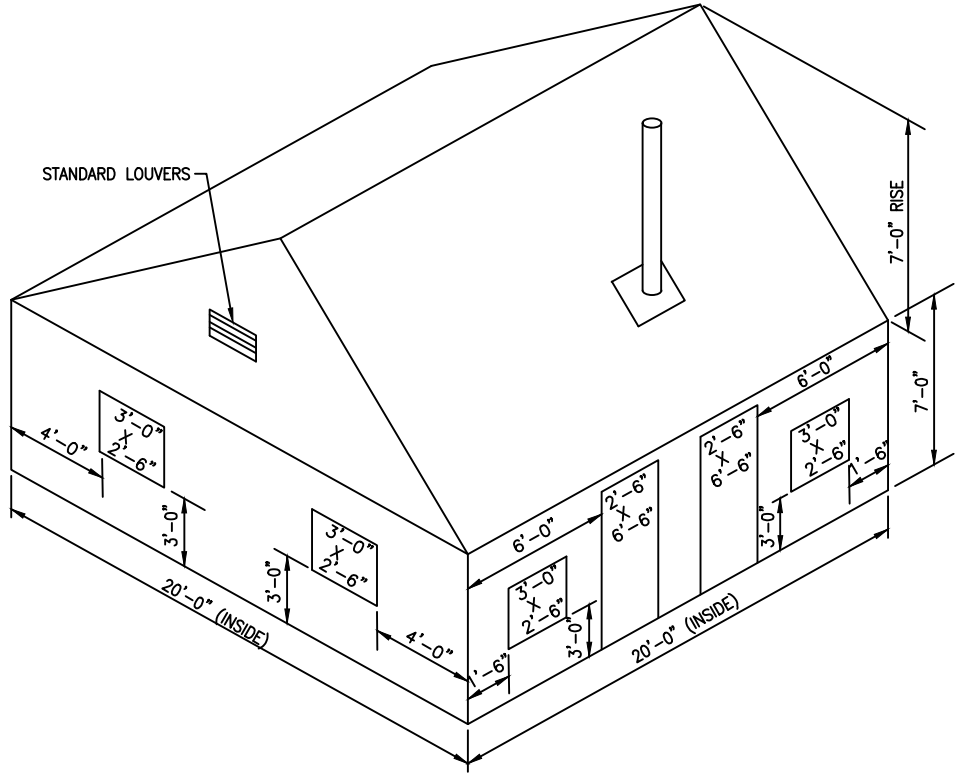
STANDARD GENERAL DETAILS
ENGINEER'S OFFICE TYPE II

REVISED
04/2024

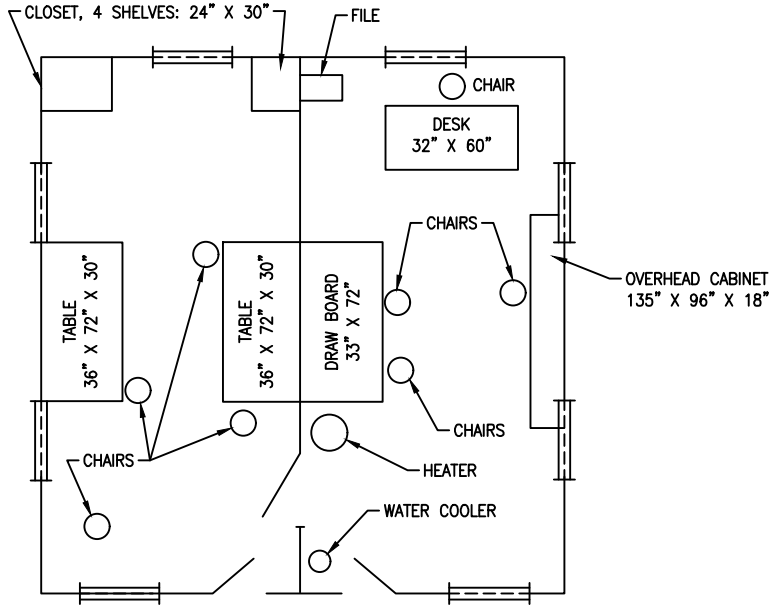
G
2

EXPLANATORY NOTES:

1. IN ADDITION TO THE EQUIPMENT INDICATED ABOVE, AIR CONDITIONING WILL BE REQUIRED. THE COST OF WHICH IS TO BE INCLUDED WITHIN THE LUMP SUM BID PRICE OF THE OFFICE. THE SYSTEM MUST BE CAPABLE OF MAINTAINING A TEMPERATURE OF 80° F DRY BULB AND APPROXIMATELY 50% RELATIVE HUMIDITY IN THE CONDITIONED AREA, WHEN OUTSIDE TEMPERATURES ARE 95° F DRY BULB AND 78° F WET BULB.
2. FURNITURE & FIXTURES INDICATED ARE BASIC. ADDITIONAL EQUIPMENT REQUIRED AND NOT SHOWN IS SO SPECIFIED IN SECTION 01200.02 OF THE SPECIFICATIONS.
3. DIMENSIONS FOR THE LENGTH MAY BE VARIED SO THAT WHEN MULTIPLIED BY THE WIDTH A MINIMUM INSIDE AREA OF 150 SQ. FT. WILL RESULT. MINIMUM HEIGHT TO BE 7'-0".
4. TOILET FACILITIES INTEGRAL TO THE STRUCTURE MAY BE CONNECTED TO AN APPROVED WATER SUPPLY AND TO A SEWER OR SEPTIC TANK SYSTEM, OR SEPARATE TOILET. TOILET FACILITIES MEETING THE REQUIREMENTS OF PARAGRAPH C.3 OF SECTION 01200.02 OF THE SPECIFICATIONS MAY BE PROVIDED.

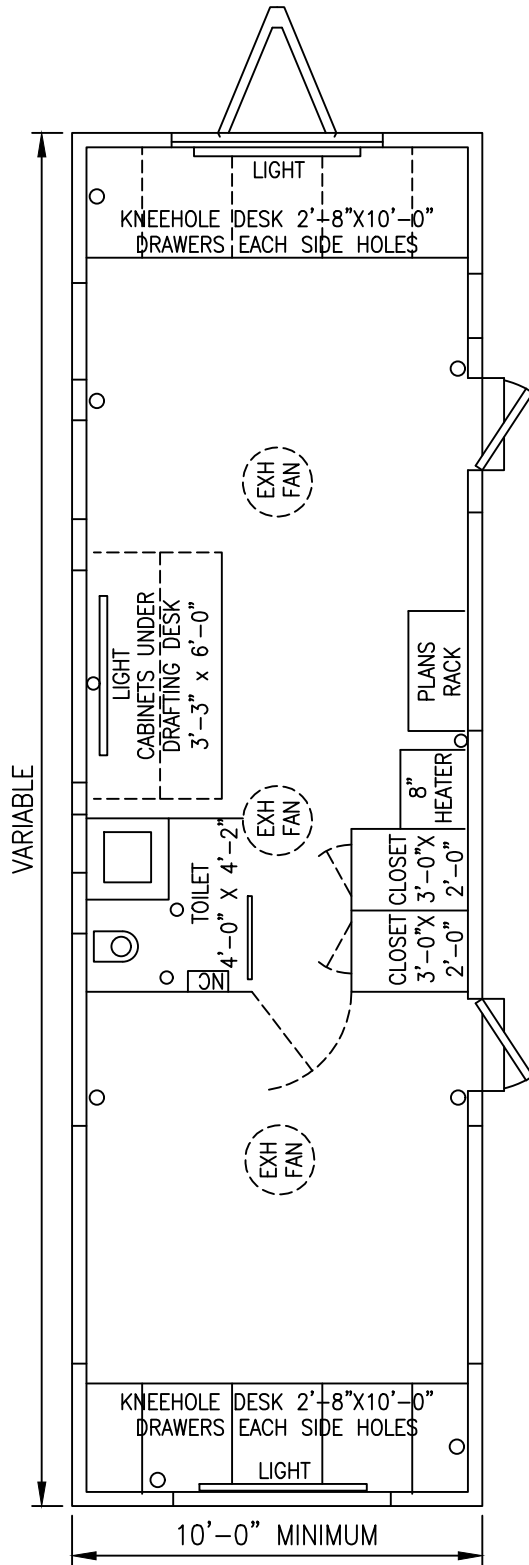


ISOMETRIC



FLOOR PLAN

ANNE ARUNDEL COUNTY DEPARTMENT OF PUBLIC WORKS	APPROVED	STANDARD GENERAL DETAILS ENGINEER'S OFFICE TYPE III	REVISED	G 3
	_____ CHIEF ENGINEER		04/2024	
	_____ DESIGN ENGINEER			
	DATE:			



EXPLANATORY NOTES:

1. IN ADDITION TO THE EQUIPMENT INDICATED ABOVE, AIR CONDITIONING WILL BE REQUIRED, THE COST OF WHICH IS TO BE INCLUDED WITHIN THE LUMP SUM BID PRICE OF THE OFFICE, THE SYSTEM MUST BE CAPABLE OF MAINTAINING A TEMPERATURE OF 80° F DRY BULB AND APPROXIMATELY 50% RELATIVE HUMIDITY IN THE CONDITIONED AREA, WHEN OUTSIDE TEMPERATURES ARE 95° F DRY BULB AND 78° F WET BULB.
2. FURNITURE & FIXTURES INDICATED ARE BASIC. ADDITIONAL EQUIPMENT REQUIRED AND NOT SHOWN IS SO SPECIFIED IN SECTION 01200.02 OF THE SPECIFICATIONS.
3. DIMENSIONS FOR THE LENGTH MAY BE VARIED SO THAT WHEN MULTIPLIED BY THE WIDTH A MINIMUM INSIDE AREA OF 150 SQ. FT. WILL RESULT. MINIMUM HEIGHT TO BE 7'-0".
4. TOILET FACILITIES INTEGRAL TO THE STRUCTURE MAY BE CONNECTED TO AN APPROVED WATER SUPPLY AND TO A SEWER OR SEPTIC TANK SYSTEM, OR SEPARATE TOILET. TOILET FACILITIES MEETING THE REQUIREMENTS OF PARAGRAPH C.3 OF SECTION 01200.02 OF THE SPECIFICATIONS MAY BE PROVIDED.

ANNE ARUNDEL COUNTY DEPARTMENT OF PUBLIC WORKS	APPROVED	STANDARD GENERAL DETAILS ENGINEER'S OFFICE TYPE III TRAILER SUBSTITUTE	REVISED	G 4
	_____		04/2024	
	CHIEF ENGINEER			

	DATE:			
	DESIGN ENGINEER			