

Anne Arundel County Transit Development Plan

Planning Advisory Board | March 13, 2024



Anne Arundel County Seal



Meeting Overview

Anne Arundel County Transit Development Plan

Draft Final Plan – January 2024

- Provide background on the planning process
- Review current services and conditions
- Review some highlights from community outreach efforts
- Discuss proposed service improvements
- PAB Discussion



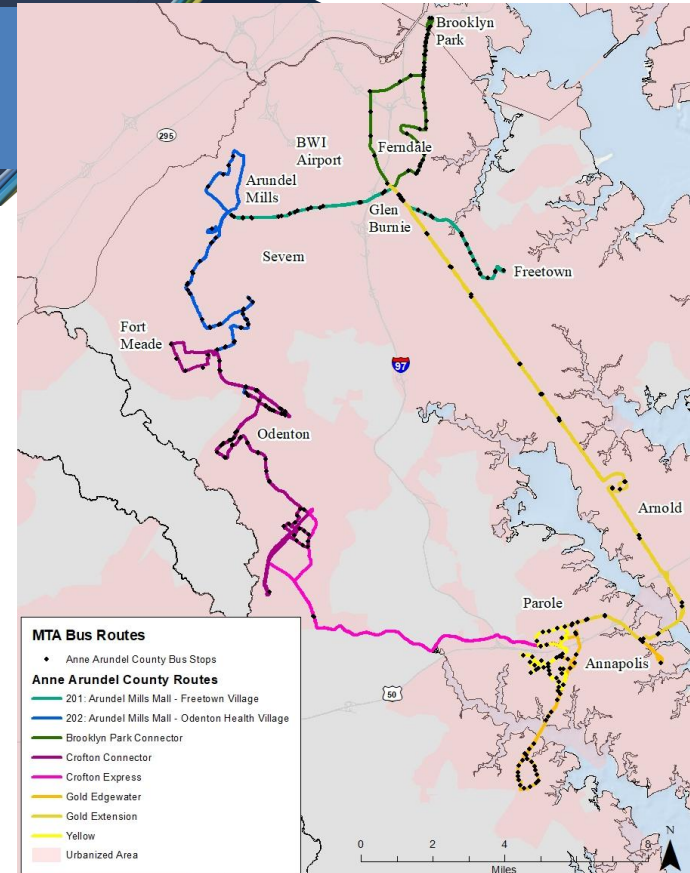
Transit Development Plan

- MDOT MTA requires locally operated transit systems to complete, and use as the basis for their annual grant application
- Formulates Anne Arundel County's goals and objectives for transit
- Reviews and assesses current services and identifies unmet needs
- Develops an appropriate short-range course of action
- Completed plan serves as a guide for implementing service changes, improvements, or expansions
- Component plan of County Transportation Master Plan: Move Anne Arundel!

Current Service Overview

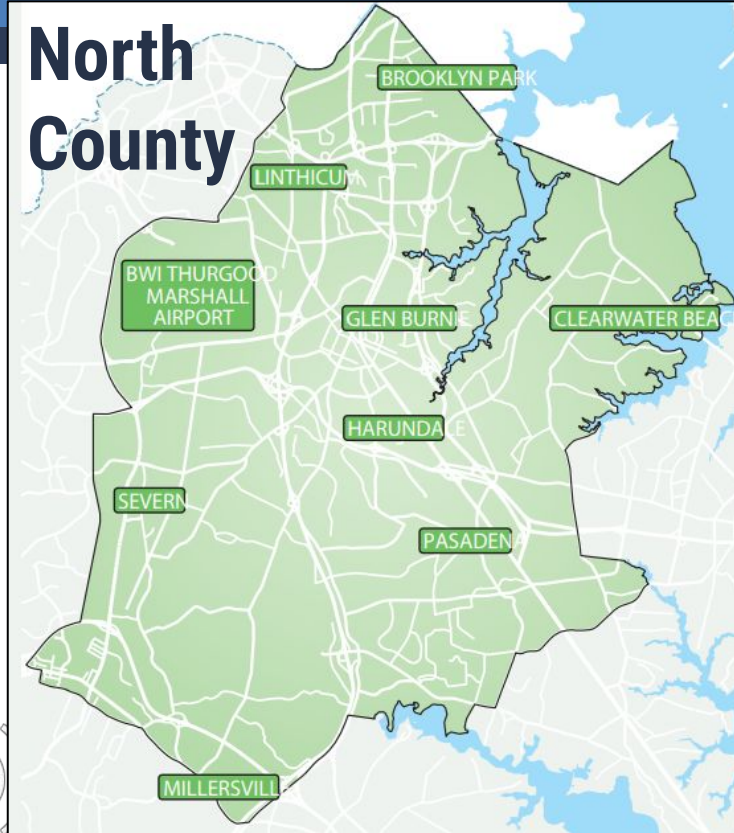
- Fixed Routes
- North County / South County Call N'Ride Services
- ADA Complementary Paratransit
- General Paratransit Services

- All services are fare-free

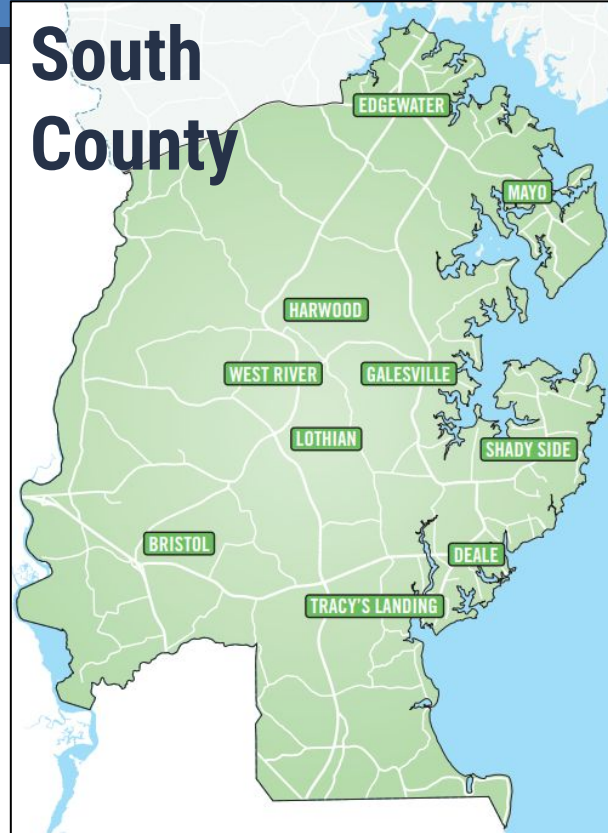


Call N'Ride Services

North County

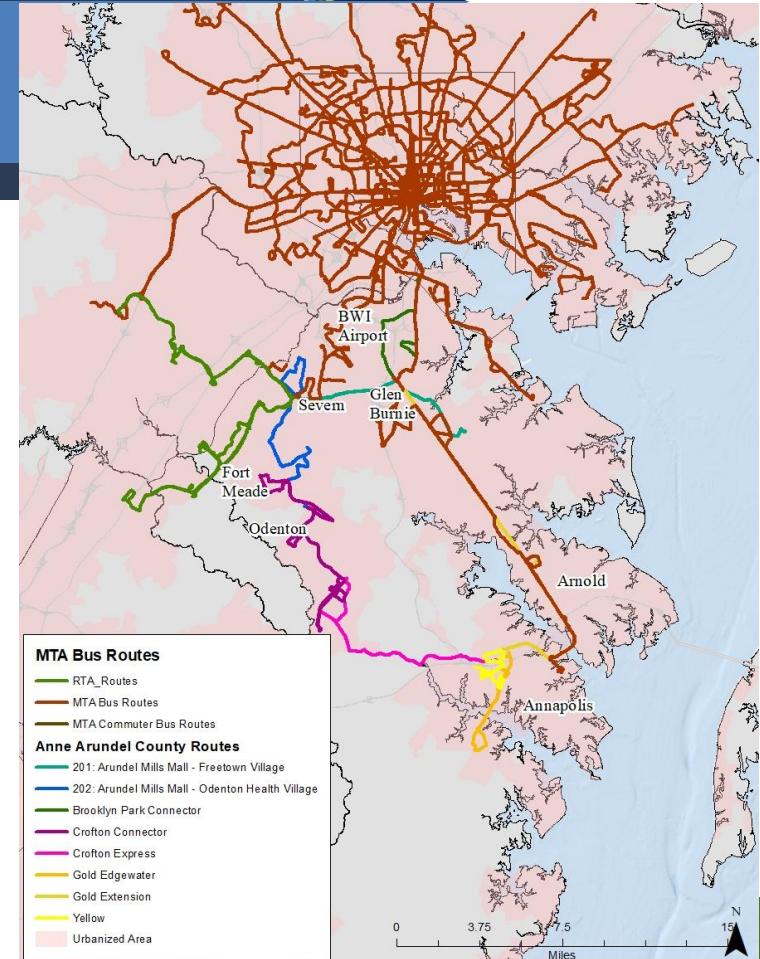


South County



Regional Service Overview

- MDOT MTA
- RTA
- Annapolis Transit
- County Connector
- Department of Aging and Disabilities
- Private and Non-Profit Providers
- Ridesharing



Technology Updates



- Passio Go!- Allows riders to see buses in real-time and provides updates on delays and schedule changes.



- Pingo - Allows riders to schedule trips with our Call N' Ride service ahead of time.



- Transit App - Links our fixed route services with MTA, DC, and Annapolis.

Approved Capital Projects

- Parole Transportation Center: \$17.2 million
- Odenton MARC Garage: \$35.6 million
- Transportation Operations Facility: \$6.98 million
- Arundel Mills Bus Shelter Enhancements: \$1.8 million
- Transit Improvements \$50,000 annually
- Safe Routes to Transit \$500,000 annually



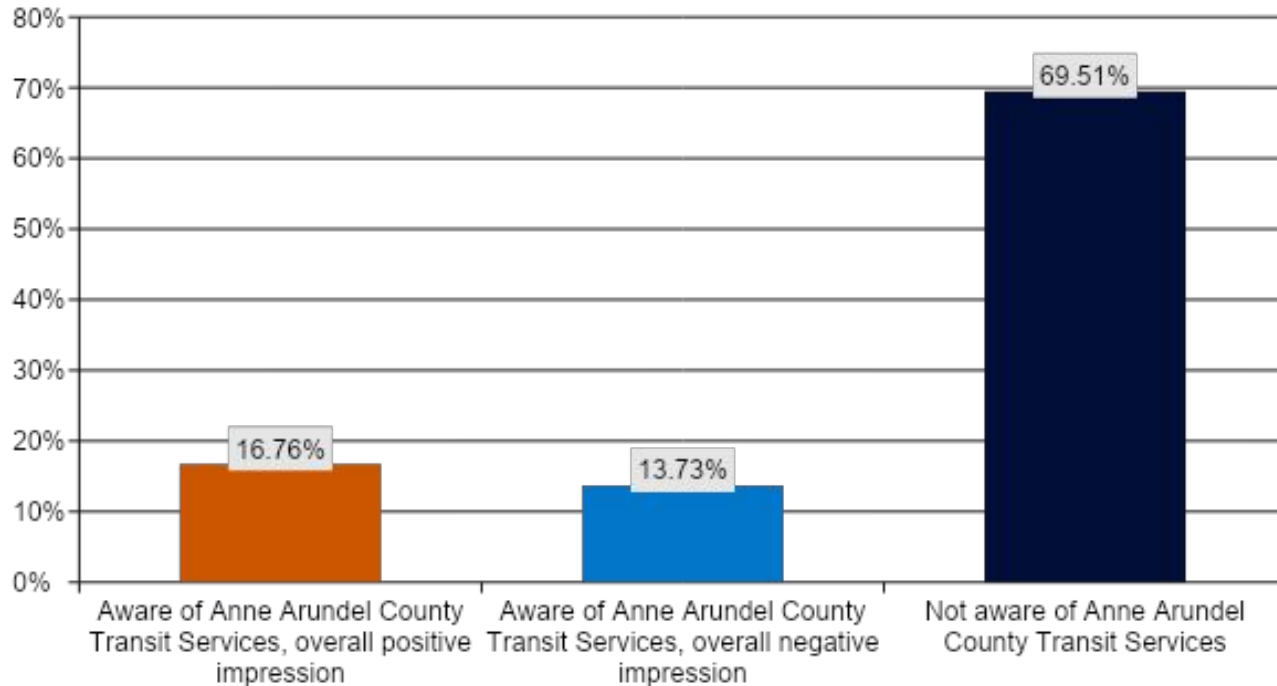
Needs Assessment

- Community Survey
- Customer (Rider) Survey
- Stakeholder and Staff Input
- Demographic Analysis
- Review of Previous and Current Plans and Studies

Community Survey Results

- Received 936 responses
- 93% reported that a car was their primary mode of transportation, only 1.2% noted public transportation as their primary travel mode
- 7% reported use of public transportation services
- Frequent public transit users:
 - MDOT MTA Local Bus: 20.7%
 - MARC Train: 13.3%
 - MDOT MTA Commuter Bus: 9.5%
 - RTA: 8.7%
 - AA County Transit: 8.6%

Awareness of Anne Arundel County Transit Services



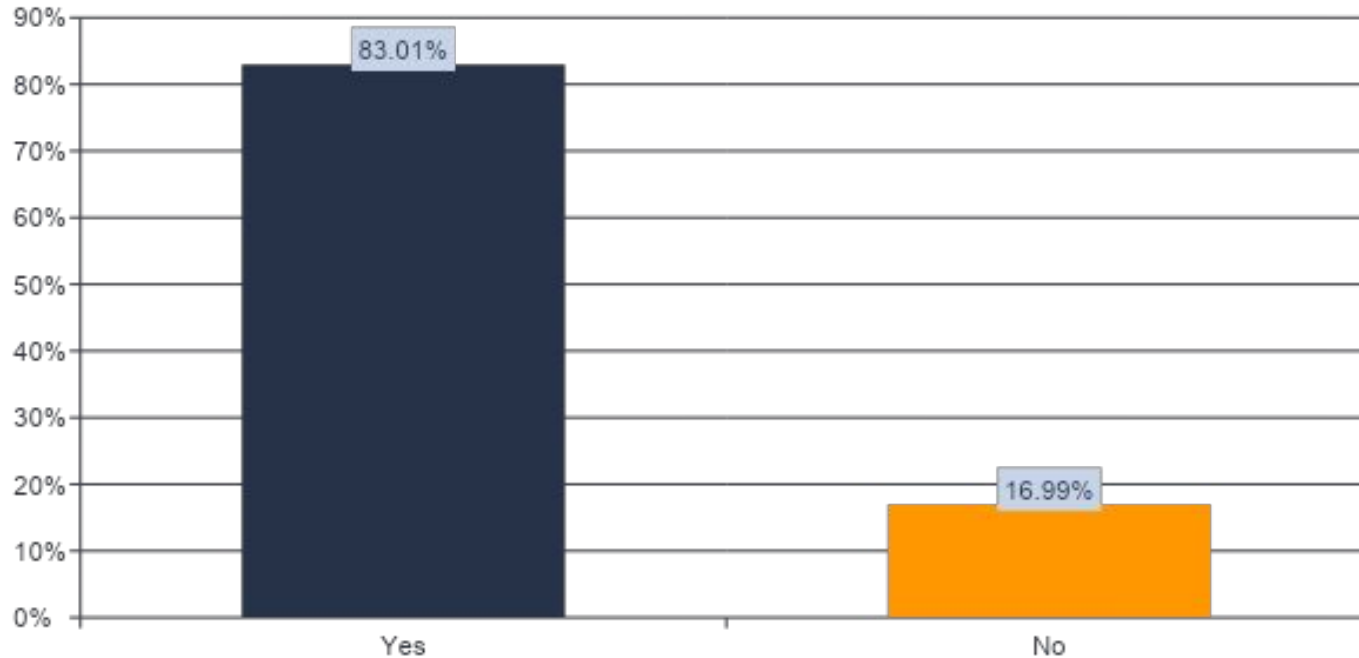
Factors That Would Encourage Public Transportation Use

Service near my home	66%
Improved information on available services	44%
More frequent service	32%
Better sidewalk infrastructure to access transit stops and stations	30%
Shorter wait/pickup time	30%
On-demand service similar to Uber/Lyft in my neighborhood	28%
More reliable service	25%
Longer hours of service	17%
Fewer transfers	16%
Shorter travel time	16%

Needed Improvements

New service that would connect communities or key destinations	67%
Local service within my community	41%
Expanded transportation services designed for older adults and people with disabilities	28%
New or expanded service that would provide access to a MARC station.	23%
Expanded service on current routes.	19%

Need for Additional or Improved Public Transportation in Anne Arundel County?



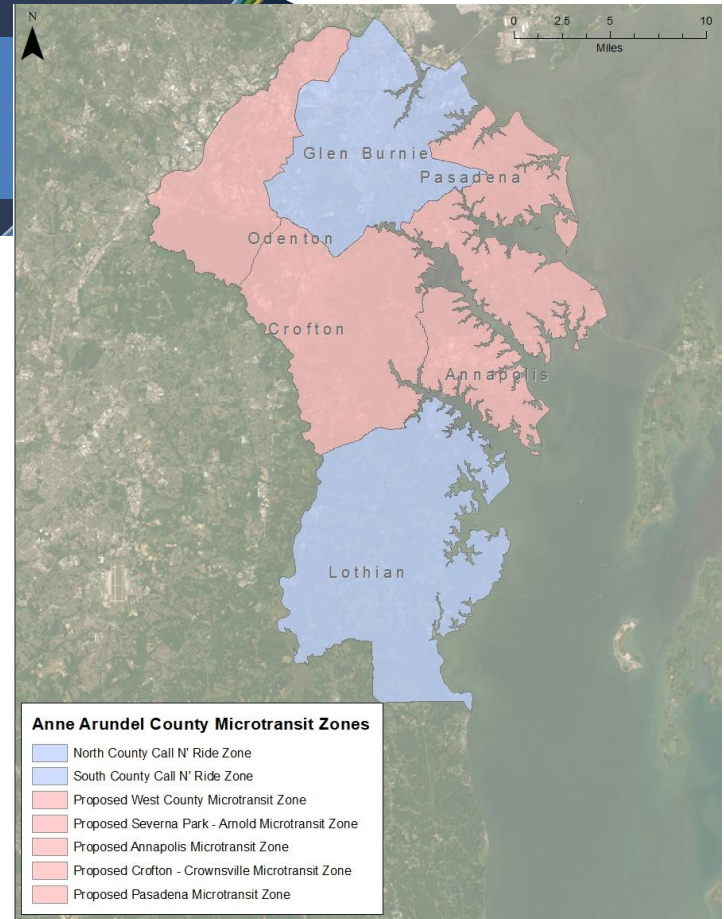
Proposed Service Plan

- Expanded On-Demand Services
- New Fixed Route Service
- Expanded Regional Services
- Ongoing Review of Current Routes for Consideration of Increased Frequency
- Coordination with Regional Transit Partners



Proposed On-Demand Microtransit Service

- Real-time service that uses dynamic routing and scheduling
- Trips primarily requested via smartphone/app
- Features:
 - ▷ Smaller vehicles
 - ▷ Geofenced service area
 - ▷ First mile/last mile connections with existing transportation services



Potential Short-Term improvements

Year 1

- West County On-Demand Service
 - ▷ Jessup and Hanover
- Annapolis /Parole On-Demand Service

Year 2

- Severna Park/Arnold On-Demand Service
- Pasadena On-Demand Service

Proposed Operating Hours
for On-Demand Services:
Monday -Saturday:
7:00 a.m. - 7:00 p.m.

Potential Mid-Term improvements

Year 3

- Crofton/Crownsville On-Demand Service
- Anne Arundel Community College/Severna Park – Fort Meade/NSA Route

Year 4

- Laurel – NSA/Fort Meade Service
- Crofton-Bowie Service
- Annapolis – Arundel Mills/BWI Airport
- Crofton – Cromwell Light Rail

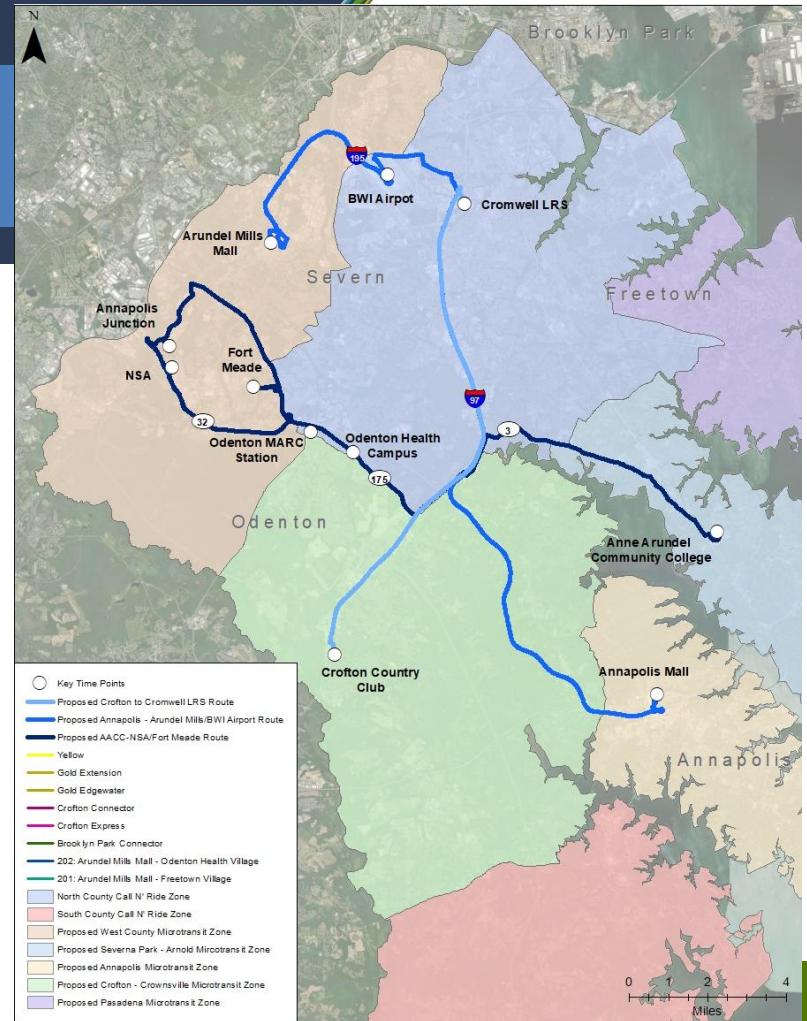
Potential Long-Term improvements

Year 5 and Beyond

- Parole – New Carrollton Express Service
- I-97 Express: Cromwell Light Rail – Parole Transportation Center
- Pasadena – NSA
- Glen Burnie – Fort Meade

Potential Future Network

- On-Demand Services – Existing and Planned
- New County Routes
- Note: Does not show potential regional services



Conceptual Financial Plan*

Proposed Operating Requests	Projected Year				
	1	2	3	4	5
Proposed Future Projects					
Baseline Operating Cost with Inflation	\$15,077,120	\$15,830,976	\$16,622,525	\$17,453,651	\$18,326,334
Year 1					
West County On-Demand	\$575,770	\$604,559	\$634,786	\$666,526	\$699,852
Annapolis/Parole On-Demand	\$415,120	\$435,876	\$457,670	\$480,553	\$504,581
Year 2					
Severna Park/Arnold On-Demand		\$596,461	\$626,284	\$657,598	\$690,478
Pasadena On-Demand		\$738,904	\$775,849	\$814,642	\$855,374
Year 3					
Crofton/Crownsville On-Demand			\$770,812	\$809,352	\$849,820
AACC/Severna Park - Fort Meade/NSA			\$956,430	\$1,004,251	\$1,054,464
Year 4					
Laurel - NSA/Fort Meade (Possible RTA Service)				\$872,977	\$916,625
Crofton - Bowie (Possible RTA Service)				\$669,501	\$702,976
Annapolis – Arundel Mills/BWI Airport				\$1,651,435	\$1,734,007
Crofton – Cromwell Light Rail				\$1,218,083	\$1,278,987
Year 5					
Parole - New Carrollton Express (Possible MDOT/MTA Service)					\$627,165
I-97 Express Bus					\$632,142
Pasadena – NSA					\$632,142
Glen Burnie – Fort Meade					\$632,142
Total Proposed Operating Expenses	\$16,068,010	\$18,206,775	\$20,844,356	\$26,298,569	\$30,137,089
Anticipated Funding Sources for Operating					
Federal/ State	\$7,798,635	\$8,836,689	\$10,116,842	\$12,764,054	\$14,627,086
Local	\$8,269,375	\$9,370,087	\$10,727,513	\$13,534,515	\$15,510,003
Total Proposed Operating Revenues	\$16,068,010	\$18,206,775	\$20,844,356	\$26,298,569	\$30,137,089

* Updated since distribution of the draft plan; could be incorporated into final plan.



Public Comment Period



- <https://www.aacounty.org/transportation/transit/transit-development-plan>
- Public Meeting Feb 27th at Discoveries: The Library at the Mall
- Comment period closed March 12th

Comments or Questions

