

Broadneck Peninsula Trail Phase IB and V

Capital Project No. P504100

Contract No. P504105

Pre-Construction Community Meeting

August 2, 2023

6:00pm



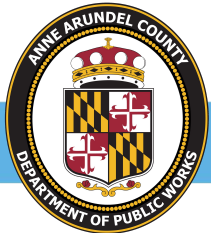
Important Meeting Information

Tonight's meeting will be audio and video recorded
You will only hear the voices of the presenters.

If you have questions, please utilize the Q&A function at the
bottom of your device screen

All questions will be answered at the end of this presentation

Any questions that cannot be answered tonight will be taken back and added
to the question-and-answer document that will be mailed approximately 1
month from tonight's meeting.



Project Team

Kyle Autry
Project Manager
Department of Public Works
410-222-7175
pwautr19@aacounty.org

Bruce Bruchey
Chief Planning and Construction
Department of Recreation and Parks

Design Consultant: AECOM
Romaine Kesecker, RLA, Project Manager
Dominic Taglione, PE, Design Engineer

Contractor:
Multi-Prime Contract

Construction Manager:
Claire Kwiatkowski, CCM
KCI Technologies, Inc.
410-316-7876



Meeting Agenda

- Project Goals
- Maintenance of Traffic
- Project Schedule and Duration
- Questions

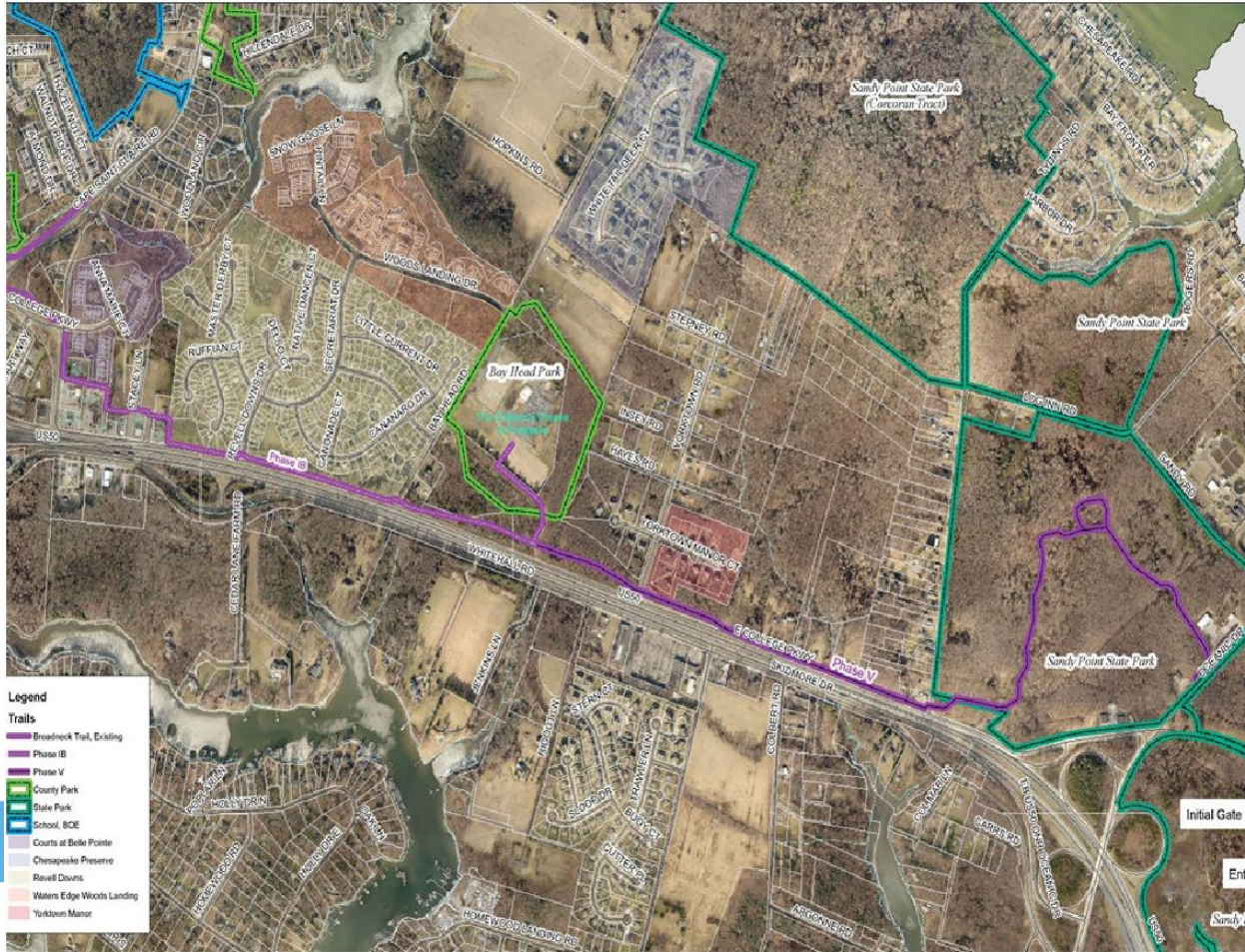


Project Goals

- Construction of an 8' to 10' wide multi-use asphalt trail along College Parkway from Peregoy Park Place to Sandy Point State Park at about 3.1 miles in length
- Provide connections to sidewalks, crosswalks, ramps and Bay Head Park and will be ADA compliant
- Provide pavement markings, signage, fencing, drainage conveyance systems and new stormwater management features
- Install culverts, curb walls, landscaping, site grading
- Install sediment and erosion control, and other site amenities
- Anne Arundel County possesses all Right-of-Way and Rights of Way required to construct and maintain the project, including locations within state property.



Broadneck Trail- Phase IB and V Alignment



Maintenance of Traffic

- Contractor must adhere to the plans for maintaining traffic during construction
- Contractor and County will coordinate with property owners in maintaining access / egress to intersecting roadways and driveways
- No lane closures or disruption of traffic will be allowed between the hours of 5 am-9 am & 4 pm-7 pm weekdays (peak hours). Additional construction and lane closure restrictions shall be approved by the county construction engineer
- If construction activities require a lane closure, the contractor will be allowed to close one lane during non-peak hours

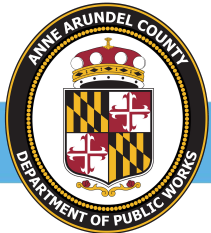


Project Schedule and Duration

- Typical Working Hours: Monday – Friday 7 AM to 5 PM
- Project Start Date (Approximate): Late August 2023
- Anticipated Completion: Summer 2024

Check webpage for periodic updates:

<https://www.aacounty.org/departments/recreation-parks/capital-projects/Projects/broadneck-peninsula-trail>



Broadneck Peninsula Trail

Phase III

Capital Project No. 504104
Construction Update

Peninsula Farm Rd to Bay Dale Dr., 2.5 miles

- Construction in progress
- Completion anticipated Fall 2024



DPWandYOU.com | *Making a difference, together*



Broadneck Peninsula Trail



STATUS OF PHASES

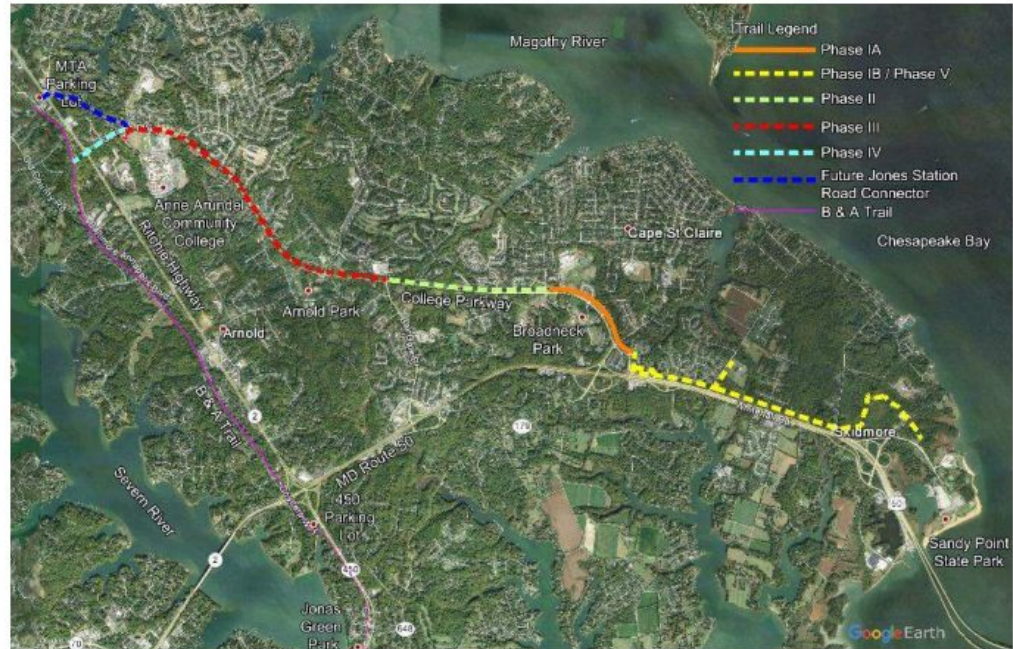
Phase IA - Complete

Phase IB/Phase V – Construction

Phase II – Complete

Phase III – Under Construction

Phase IV - Jones Station Connector – Complete





— Making a difference, together —

Thank you for your interest in the Broadneck Peninsula Trail Phase IB and V Project.

Questions?

Kyle Autry

Project Manager

pwautr19@aacounty.org

Department of Public Works

1 Harry S. Truman Parkway

Annapolis, MD. 21401



DPWandYOU.com | *Making a difference, together*





Bureau of Utility Operations

24-Hour Emergency

Water Service: (410) 222-8400

Billing Inquiries: (410) 222-1144



Bureau of Waste Management Services

Bulk Trash Service / Curbside

Collections: (410) 222-6100



Bureau of Highways

General Inquiries: (410) 222-7321

Snow Line: (410) 222-4040

Email: hwyscustomercare@aacounty.org



Bureau of Engineering

General Inquiries: (410) 222-7500



Bureau of Watershed Protection and Restoration

General Inquiries: (410) 222-1072

Customer Relations:

(410) 222-7582

