

# Anne Arundel County Board of Elections

FY24 Budget Presentation

May 2, 2023

A dark blue diagonal graphic that starts from the bottom left corner and extends towards the top right corner, covering the lower half of the slide.

# 10,000 Foot Overview

No rain dates for Election Day!

## PRIMARY ELECTION DATES (FY24)\*

- *Early Voting: May 2nd - May 9th*
- *Election Day: May 14, 2024*

## GENERAL ELECTION DATES (FY25)

- *Early Voting: October 24th - October 31st*
- *Election Day: November 5, 2024*

*\*Original Primary Election date changed during Maryland Legislative session due to falling on a religious holiday*

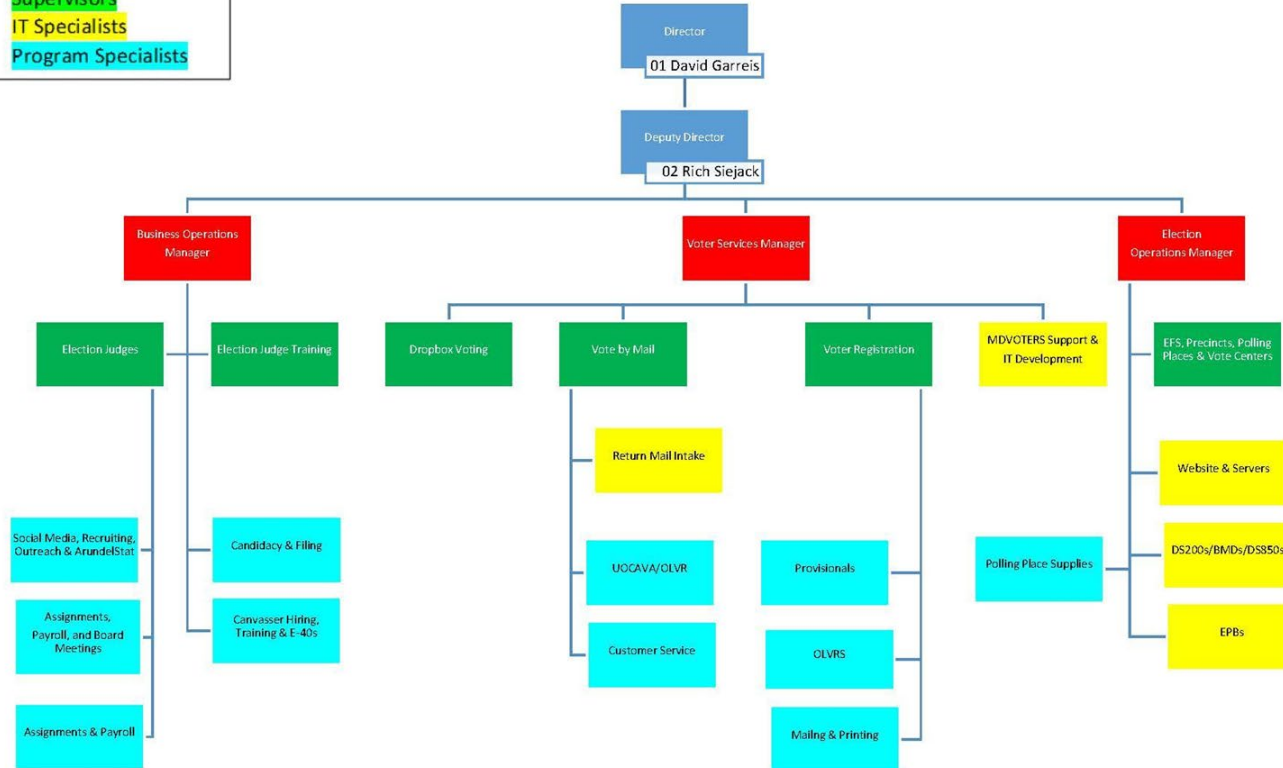
## The Anne Arundel County Board of Elections:

- Five member Board appointed by the Governor
  - 3 Democrats & 2 Republicans
  - Two new Board Members next Election -
    - 1 Democratic and 1 Republican
- David Garreis, Director
- Richard Siejack, Deputy Director
- 27 full-time state employees
  - including Director and Deputy Director
- Presidential Primary and General Election in 2024
  - **18 Voting Days & 22 Canvassing Days:**
    - **40 Days of Voting & Canvassing**
  - 16 Early Voting Days & 2 Election Days
  - NEW: 8 days of preelection canvassing and 3 days of post-election canvassing.

**Anne Arundel County Board of Elections**  
**Organization Chart**  
 Created 9/1/2022

**KEY**

- Program Manager
- Supervisors
- IT Specialists
- Program Specialists



# Voter Registration

## Voter Registration

- Current Voter Records: 411,292  
- 4th largest jurisdiction in Maryland
- 2023 Registration Transactions: 45,551\*
- 2022 Registration Transactions: 144,524
- 2020 Registration Transactions: 194,767
- 2018 Registration Transactions: 138,394
- 2016 Registration Transactions: 195,381

\*As of April 28, 2023

# Mail - in Voting

- Processes all Mail- in Ballot Applications for military, overseas, and domestic residents, including voters living at Nursing Homes or Assisted Living Facilities.
- Applications are issued via phone, in-person, by mail, or online via web.
- Ballot delivery methods include mail, web, fax or in- person
- 32 Ballot Drop Boxes in Anne Arundel County in 2022.

## Mail-in Voting

- Total Mail-in Voters in 2022: 69,887 mailed / 60,070 returned
  - Including 32,291 ballot via Drop Box
- Total Mail-in Voters in 2020: 149,216
  - Including 106,704 ballots via Drop Box
- Total Mail-in Voters in 2018: 11,768
- Total Mail-in Voters in 2016: 16,420
- Total Mail-in Requests in 2024\*: 44,419 (44,251 permanent)

\*As of April 28, 2023

## Process Improvements in 2022

- Implementing of Tritex Vote by Mail Ballot Sorting Machine
  - AAC led drive to streamline data transfer from Tritex to MDVOTERS. Far less manual scanning
  - 47,625 voted ballots processed with Tritex (96.22% of returned ballots)
  - Expanded use to include scanning web-delivery mail-in ballots in 2024
- Used in all other large LBEs
- Used in Delaware, Georgia. Vendor has existing state contract to provide mail equipment to other state agencies as well as large LBEs.
- Scans and sorts ballots, eliminating hours of labor-intensive effort.

# New for FY24

## Early Voting Sites (pending Board approval):

1. Odenton Library
2. Gladys D. Greene Banquet Hall
3. *Severna Park TBD*
4. *Annapolis TBD*
5. Crofton Library
6. Deale Elks Lodge
7. (NEW) Riviera Beach Library
8. *Edgewater TBD*
9. *Severn TBD*

## Keys to the Future

- SBE Electronic Pollbook Procurement
  - Statewide
  - New Electronic Pollbook Solution
  - 2024 Implementation
- Pre-election Canvassing Teams
  - Canvassing Voted Mail-in Ballots by bipartisan teams of Election Judges
  - 8 Days prior to Early Voting
- Ballot Drop Box Security Cameras
  - Project working with CCTV to place dropboxes
- Potential Early Voting Sites: Riviera Beach Library in Pasadena; Severn Community Center
- \*Polling Places - HB410: Polling Place plan submission 6 months before Primary Election.
- \*Election Judge Pay - HB1200: Minimum Election Judge Salary of \$250 for service & \$50 for training and \$100 as bonus for returning Election Judges.

# Comparative Election Statistics

## 2022 Gubernatorial General

Total Turnout: 218,315 (53.71%)

- Early Voting: 39,793 (17.77%)
- Election Day: 113,571 (52.02%)
- Provisional: 5,914 (2.71%)
- Mail-in: 60,037  
(27.50%)

## 2020 Presidential Primary

Total Turnout: 130,757 (39.52%)

- \*Early Voting: N/A
- Election Day: 3,008 (2.30%)
- Provisional: 608 (.46%)
- Mail-in: 127,141  
(97.23%)

\*Cancelled due to COVID19 pandemic. State voted with Voter Centers via Emergency Declaration of the Governor.

# Further Questions

David Garreis, Director

Phone: 410-222-0405

Cell: 443-875-6004

Email: [david.garreis@maryland.gov](mailto:david.garreis@maryland.gov)

Richard Siejack, Deputy Director

Phone: 410-222-0401

Email: [richard.siejack@maryland.gov](mailto:richard.siejack@maryland.gov)