



ANNE ARUNDEL COUNTY 2022 LAND PRESERVATION, PARKS & RECREATION PLAN



LAND PRESERVATION, PARKS AND RECREATION PLAN

Every County in Maryland is required by the Department of Natural Resources to update their 2018 LPPRP for the 2022 cycle.

The Plan evaluates the demand for parklands and recreational facilities based on need, proximity, and equity and outlines goals and priorities for the next five, ten, and fifteen years.



CONTENTS OF THE LPPRP

Chapter 1: Introduction

Chapter 2: Framework

- Existing conditions, physical and demographics

Chapter 3: Recreation, Parks, and Open Space

□ ***Supply and Inventory***

□ ***Demand and Needs Analysis***

□ ***Proximity and Equity Analyses***

□ ***County Priorities***

Chapter 4: Agricultural Land Preservation

Chapter 5: Natural Resources and Land Conservation





CHAPTER 3

*Supply and Inventory
Demand and Needs Analysis
Proximity and Equity Analyses
County Priorities*

SUPPLY & INVENTORY

What we have now

This includes an inventory of:

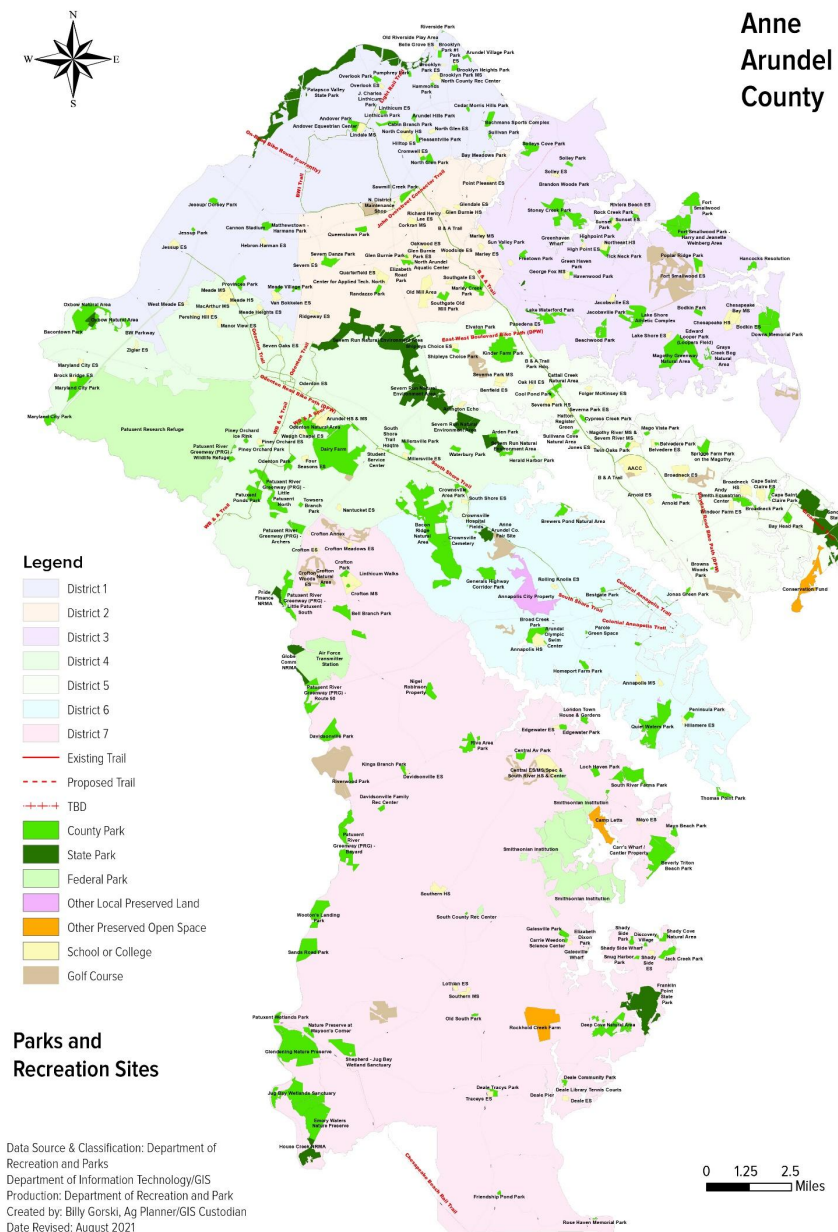
- State, County, and Federally owned recreation and conservation land
- Recreational and park amenities in each Council District
- Water access facilities (boat ramps, car-top launches, beaches, etc.)
- Trail miles



SUPPLY & INVENTORY

Highlights – Anne Arundel County has:

- About 21 acres of recreation land for every 1,000 people --**almost double the national standard.**
- 533 miles of shoreline with 6 public boat ramps, 28 public car-top launches, 39 locations for public fishing.
- More than 222 miles of trails (not including ones in parks)
- Over 1,700 park amenities, including 350 baseball fields, 286 basketball courts, 216 picnic areas, and 193 playgrounds.



DEMAND AND NEED

What we might want or need in the future

This includes:

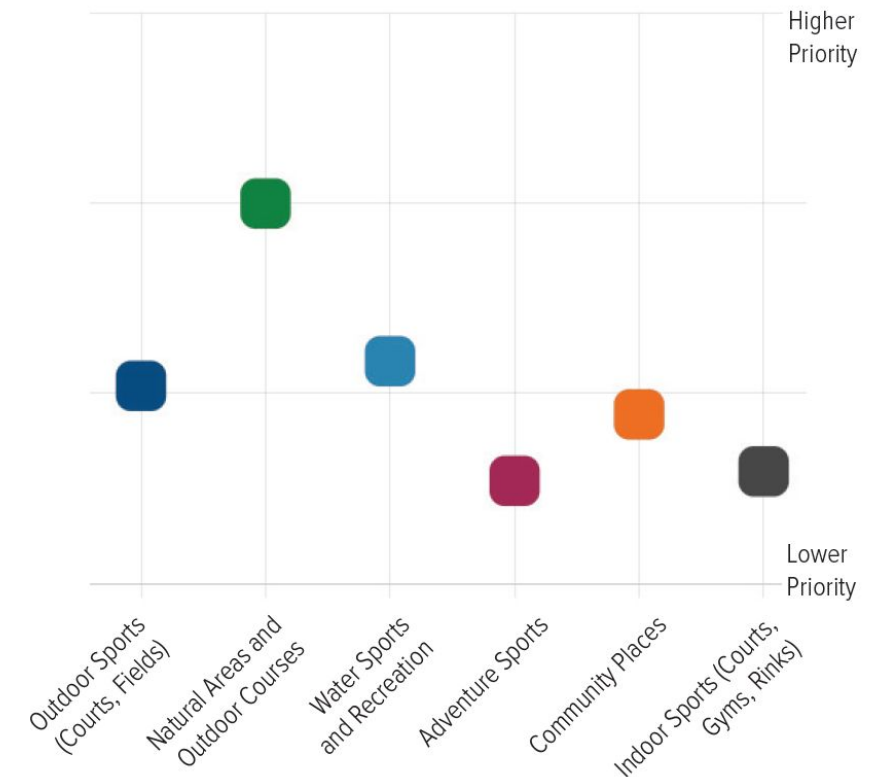
- Comparison of Anne Arundel County's facilities compared to national standards
- Review of projected population growth and age change
- Survey results
 - Department Survey (Over 2,800 responses)
 - State Survey (State-wide, statistically valid phone survey)
 - Middle School Survey (Students at 18 Middle Schools)
- Recreation and sports program participation
- Park visitor counts
- Town Hall Meetings in each Council District
- Review of goals in other plans including: Plan2040, Green Infrastructure Plan, and the 2017 LPPRP

DEMAND AND NEED

Takeaways from the Demand and Needs Analysis:

- Anne Arundel is doing very well compared to national standards.
- County Council Districts 1, 3, 5, and 4 are projected to grow the most by 2040.
- The 65+ age group is expected to grow the most by 2040.
- Top county-wide priorities from the survey:
 - Natural Areas and Outdoor Courses
 - Water Sports and Recreation
 - Outdoor Sports
 - Community Places
- Top priorities from the state survey were trails, park activities, and water recreation
- Favorite parks from the middle school survey were Kinder Farm, Quiet Waters, and Downs Park

Priorities for Recreational Activities



DEMAND AND NEEDS - SUMMARY

High priorities that came out of the Demand and Needs analysis:

- **Land conservation and acquisitions:** Natural area preservation, land conservation, and historic preservation.
- **Trails:** New, updated, and maintained walking and biking trails, plus expanding the county-wide trail system.
- **Water activities:** More outdoor, indoor, and beach access for swimming. Water parks were also a high priority across the County.
- **Community spaces, recreational programming, and sports courts:** Growing desire for the following, which are consistent with the age change in demographics:
 - Pickleball courts and Dog parks
 - Playgrounds and play fields
 - Gardens and Park programming for all ages (i.e. fitness classes)

High level of satisfaction: Park users are generally very appreciative of the recreational opportunities the County provides. Most comments were very positive.

PROXIMITY & EQUITY ANALYSES

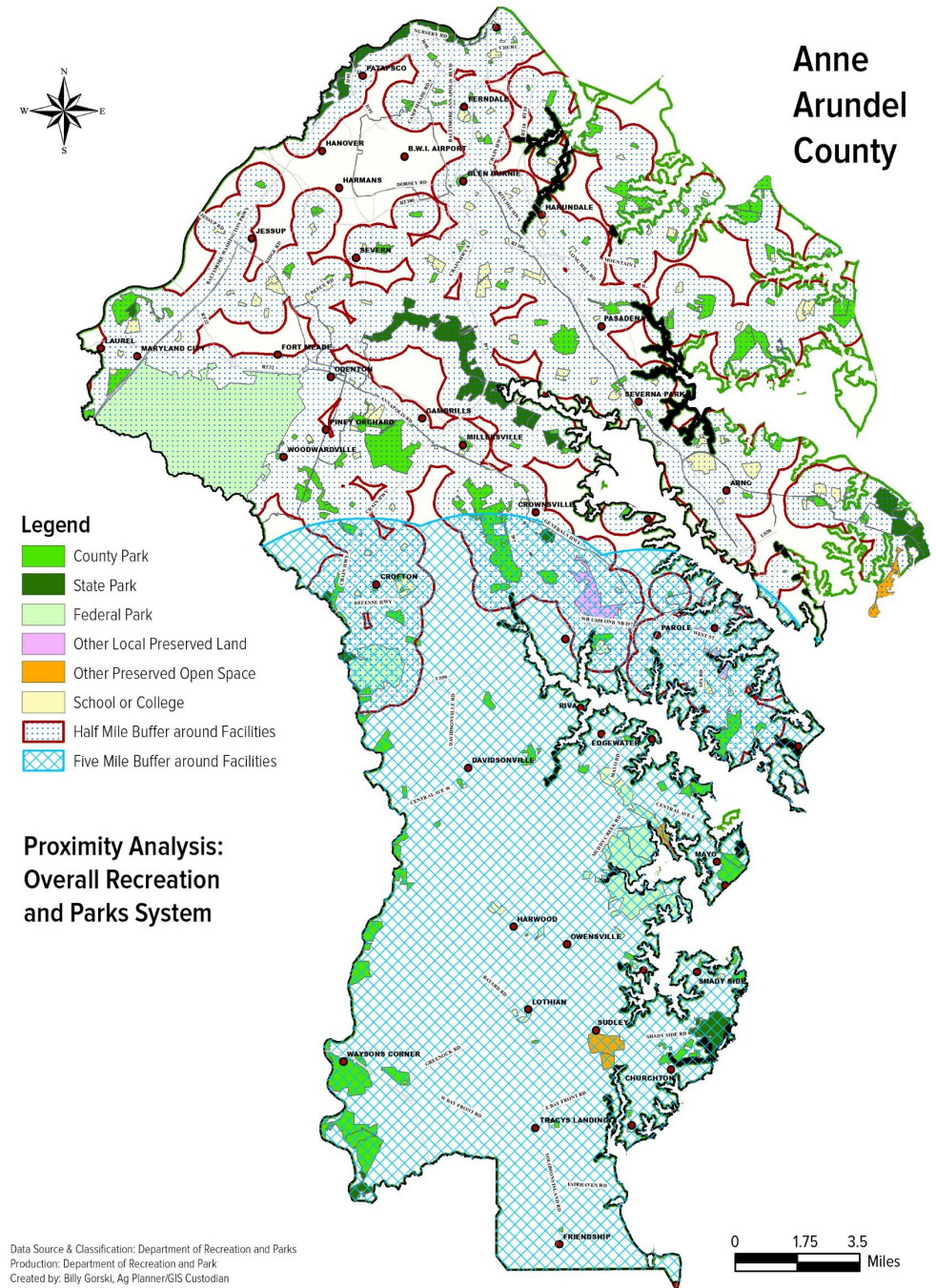
Where should improvements be focused, based on proximity to existing facilities and demographic need?

- Proximity analysis looked at ½-mile catchment areas in County Council Districts 1 – 6 and a 5-mile catchment area for Council District 7 because of its largely rural development pattern.
- Equity analysis, a State-provided tool, is based on census data and considered:
 - Proximity to public park space
 - Concentration of children under the age of 17 or adults over the age of 65
 - Concentration of low-income populations
 - Population density
 - Concentration of non-white population
 - Concentration of linguistically isolated population
 - Walkability or limited access to transit

PROXIMITY ANALYSIS

The Proximity Analysis maps suggest the following conclusions:

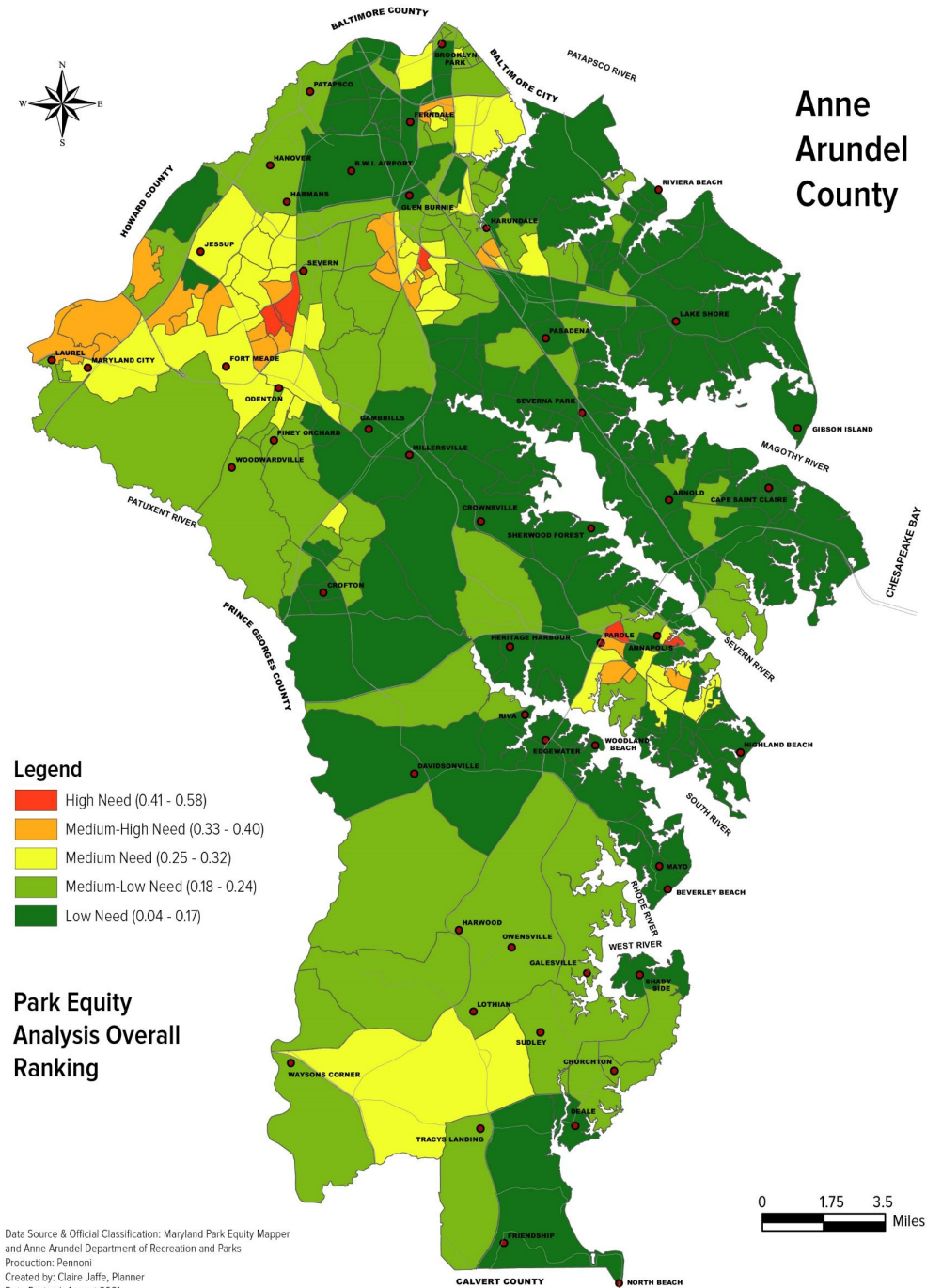
- Notable gaps include north of Fort Meade, and near Hanover and Harmans;
- All of Council District 7 is within 5 miles of at least one park or recreation facility;
- Most of the County, that is close to water, is reasonably close to public water access facilities;
- Most of the County is within 5 miles of one or more existing or planned trail;
- Athletic fields and indoor recreation facilities tend to be clustered, leaving some gaps -- most notably in relatively densely populated areas in parts of Council Districts 1 and 4.



EQUITY ANALYSIS

Areas shown as having the greatest need for park and recreation facilities include:

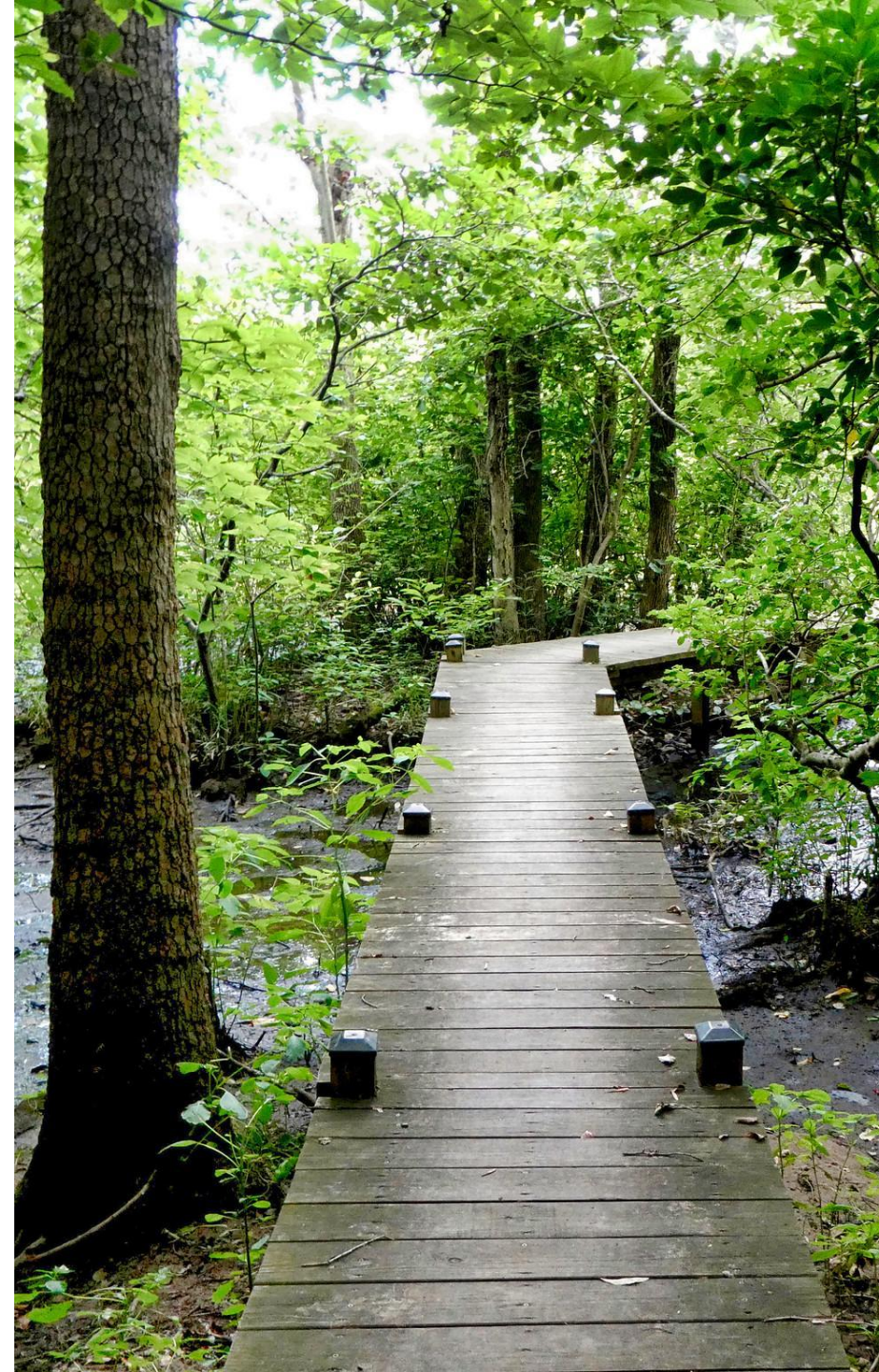
- Annapolis-Parole;
- East of Ferndale;
- North of Fort Meade and south of Severn;
- Glen Burnie South;
- South of Jessup; and
- Laurel-Maryland City



COUNTY PRIORITIES

County priorities fall into the following categories:

- Acquisition and Development Projects – where to target new land acquisitions
- Facility Development Projects – which facilities will be developed
- Facility Rehabilitation – which facilities and amenities will be upgraded



COUNTY PRIORITIES - ACQUISITIONS

Land acquisition projects totaling approximately 680 acres, including:

- Several of the bigger recreation projects include:
 - Land for a new athletic complex in the western portion of the County,
 - Land for a new community park in Glen Burnie,
 - Land to expand Jessup Park.
 - Land acquisition and a feasibility study for an outdoor water park
 - Land for athletic fields in the Linthicum/BWI area
 - Land to develop multi-generational use recreation facilities in Deale and Maryland City.
- Additional land for the multi-year Greenways, Parkland and Open Space Program.

COUNTY PRIORITIES - DEVELOPMENT

The Facility development list include 44 projects. Some biggest projects are:

- A Teen Center in Brooklyn Heights Park
- Replacement of the North County Recreation Center
- Replacement of the South County Recreation Center
- A recreational site at the former home of the Crownsville Hospital
- The West County Swim Center
- Development of new community parks at: Crownsville Area Park, Mayo-Glebe Heights, Millersville Park, Northwest Area Parks, Odenton Library Site Park, Solley Cove Park, Spriggs Farm Park, and Stoney Creek Park.
- Countywide and programmatic projects:
 - Construction of additional boat ramps;
 - Feasibility and public support study for an off-road ATV and bike facility;
 - Feasibility study for one outdoor track and field facility in the east, west, and south Council Districts;
 - Dog parks; and
 - Parking Area Enhancements.

COUNTY PRIORITIES - REHABILITATION

Facility rehabilitation will focus on the following:

- Repair or replacement of park elements such as playgrounds, picnic shelters, fencing, courts, roads, pathways, bleachers, backstops, and building repairs.
- ADA compliance
- Lighting
- Irrigation
- Outdoor recreation facilities
- Trail resurfacing
- Shoreline erosion





CHAPTER 4

Agricultural Land Preservation

GOALS AND OBJECTIVES | PLAN2040

The LPPRP is consistent with Plan2040 as well as the State goals for agricultural land preservation. The following are relevant goals and policies from Plan2040.

- Expand, enhance and continue to protect the County’s greenways, open space, rural areas and the Priority Preservation Area.
 - Increase the amount of protected land in the County.
 - Preserve 80% of undeveloped land within the Priority Preservation Area through protective easements in order to meet the State’s PPA protection goal.
- Preserve the agricultural and rural character of the County’s Rural and Agricultural Policy Area.
 - Maintain limited development patterns compatible with and intrinsic to the rural parts of the County by using the Rural and Agricultural land use designation as the primary planning mechanism for preserving the character of the County’s Rural and Agricultural Policy Area. Limit development to rural densities beyond the boundary of County’s public sewer service area.

PROGRESS SINCE 2017

There are approximately 13,991 acres of protected agricultural lands in Anne Arundel County. That's an increase of more than 800 acres since 2017!

Preservation Type	Total Acres Preserved				
	December 2011	December 2016	Change 2011-2016	May 2021	Change 2016-2020
Permanently Protected (Easement)					
Maryland Agricultural Land Preservation Foundation	4,773	5,399	626	5,485	86
County Agriculture and Woodland Protection	6,118	6,118	0	6,553	435
South Rural Legacy Area	1,111	1,460	349	1,723	263
Community Connections (DNR)	0	200	200	200	0
Total Permanently Protected	12,002	12,977	975	13,991	814



CHAPTER 5

*Natural Resources and Land
Conservation*

GOALS AND OBJECTIVES | PLAN2040

Plan2040's vision and goals establish the county-wide framework for integrating natural resource conservation with land use policies.

The LPPRP is consistent with this framework. The framework has six basic elements:

- Designated growth areas;
- Designated conservation areas;
- Region plans;
- Watershed management;
- Green Infrastructure protection; and
- Sensitive resource protection.

PROGRESS SINCE 2017

Approximately 48,870 acres of natural resource land in Anne Arundel County are protected through ownership, easement, open space zoning or bog protection zoning.

That's an increase of more than 1,300 acres since 2017!

Category	Acres
Under Ownership ¹	
Anne Arundel County	10,803
City of Annapolis	471
State	2,871
Federal	12,289
Easements ²	
Maryland Environmental Trust	3,474
Maryland Historical Trust ³	924
Zoning ⁴	
Bog Protection Areas	866
Additional Land with Open Space Zoning ⁵	17,174
Total	48,872

DRAFT PLAN OPEN FOR COMMENT

The draft Plan is available for public review and comment through **February 28**.

The draft Plan is posted on the Recreation and Parks website <https://www.aacounty.org/departments/recreation-parks/about-us/lpprp/index.html> and comments may be submitted by email to LPPRP2022@aacounty.org.



Anne Arundel County 2022
Land Preservation, Parks &
Recreation Plan

December 2021

DRAFT FOR REVIEW



THANK YOU!