



Broadneck Peninsula Trail Phase III

Project # 504104

Pre Construction Community Meeting

April 12, 2022

Virtual Meeting



DPWandYOU.com | *Making a difference, together*



Important Meeting Information

- Tonight's meeting will be audio and video recorded
 - You will only hear the voices of the presenters
- If you have questions, please utilize the Q&A function at the top or bottom of your device screen
 - All questions will be answered at the end of the presentation
 - Any questions that cannot be answered tonight will be added to the question and answer document that will be provided on the Department of Parks and Recreation website for this project (<https://www.aacounty.org/departments/recreation-parks/parks/trails/broadneck-trail/index.html>)



Meeting Agenda

- Team Introductions
- Project Overview
- Construction Schedule
- Contact Information



DPWandYOU.com | *Making a difference, together*



Project Team

Robert M. Fernandez, P. E.
Project Manager, Department of Public Works
pwfern83@aacounty.org

Dawn Thomas, CPRP
Program Specialist, Department of Recreation and Parks
rpthom00@aacounty.org

Design Consultant: Pennoni Associates, Peter Stone, RLA, Project Manager

Construction Manager – KCI Technologies

General Contractor – Urban Zink



DPWandYOU.com | *Making a difference, together*



Broadneck Peninsular Trail



STATUS OF PHASES

Phase IA - Complete

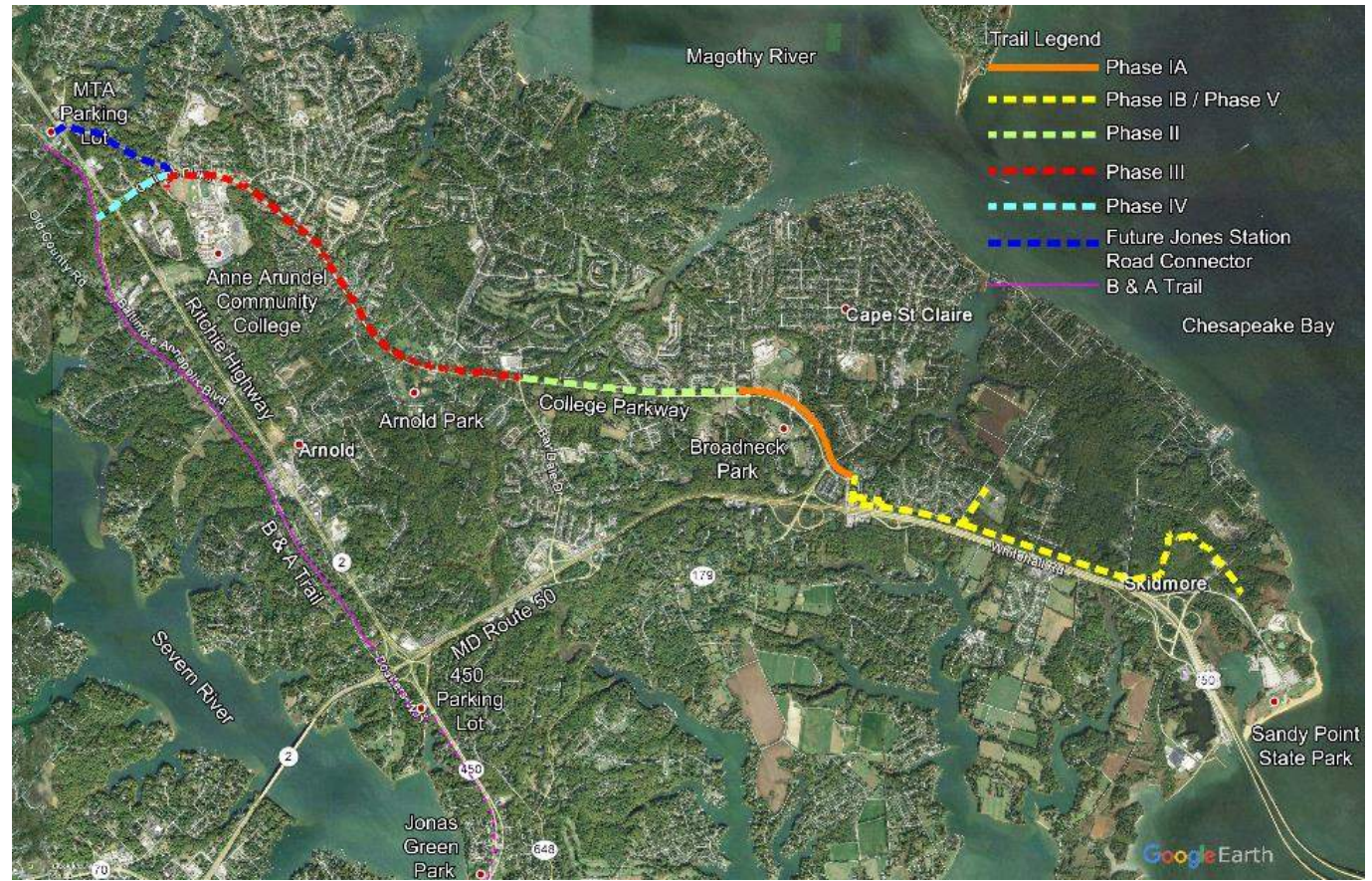
Phase IB/Phase V – Under Design

Phase II – Complete

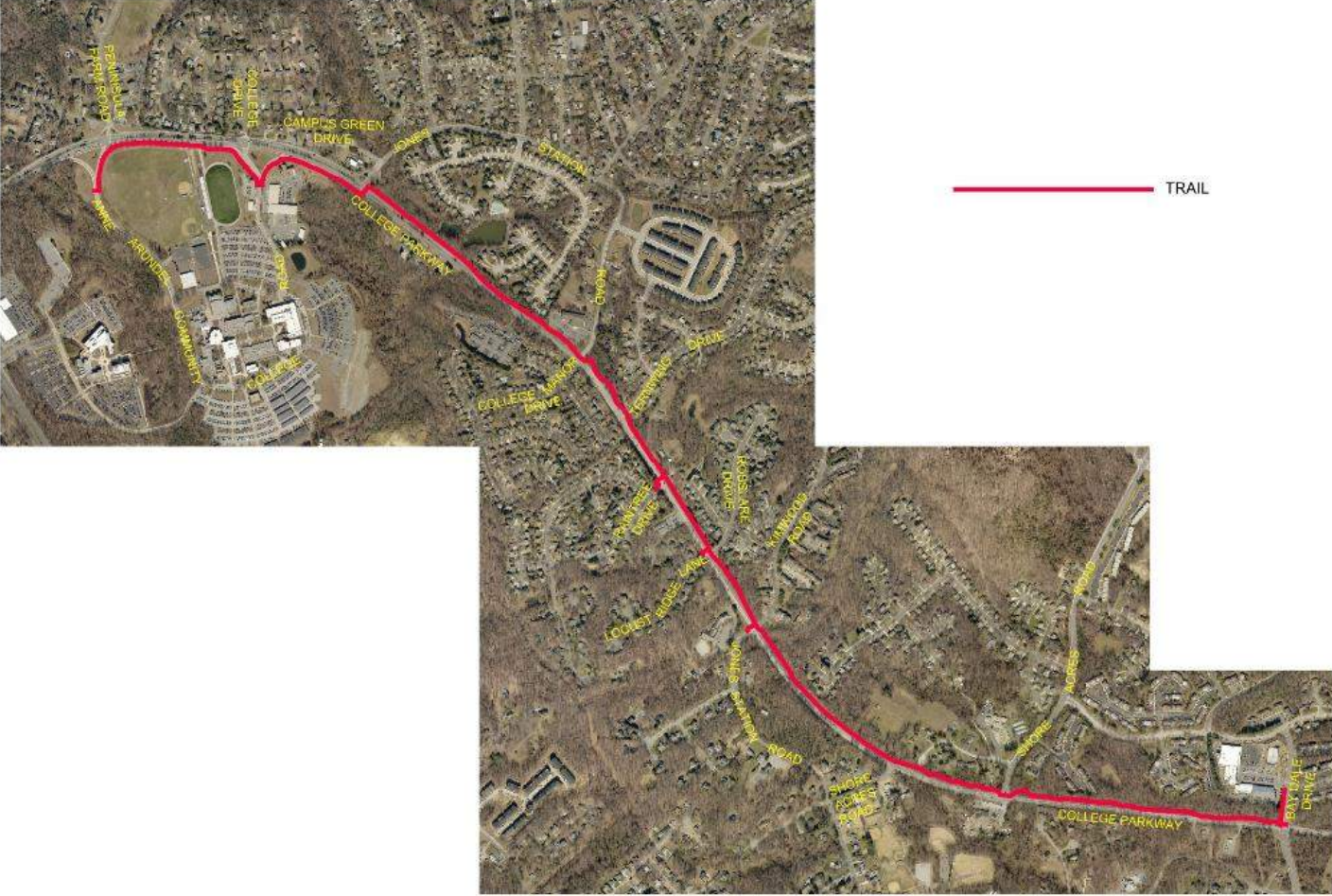
Phase III – Pre Construction

Jones Station Connector / Phase IV

Alternate – Complete



Phase III



DPWandYOU.com | *Making a difference, together*



Trail Overview

- 2.47 miles from Peninsula Farm Road to Bay Dale Drive
- 10' wide asphalt surface
- ADA accessible – slopes generally 4.5% or less
- Multiple retaining walls and boardwalks to minimize tree clearing, grading, and environmental impacts
- Stormwater management facilities and landscaping provided along trail
- Five crossings of College Parkway proposed: Jones Station Road (2), Raintree Drive, Locust Ridge Lane, Kimwood Drive/Jones Station Road



Peninsula Farm Road to Jones Station Road (East)



DPWandYOU.com | *Making a difference, together*



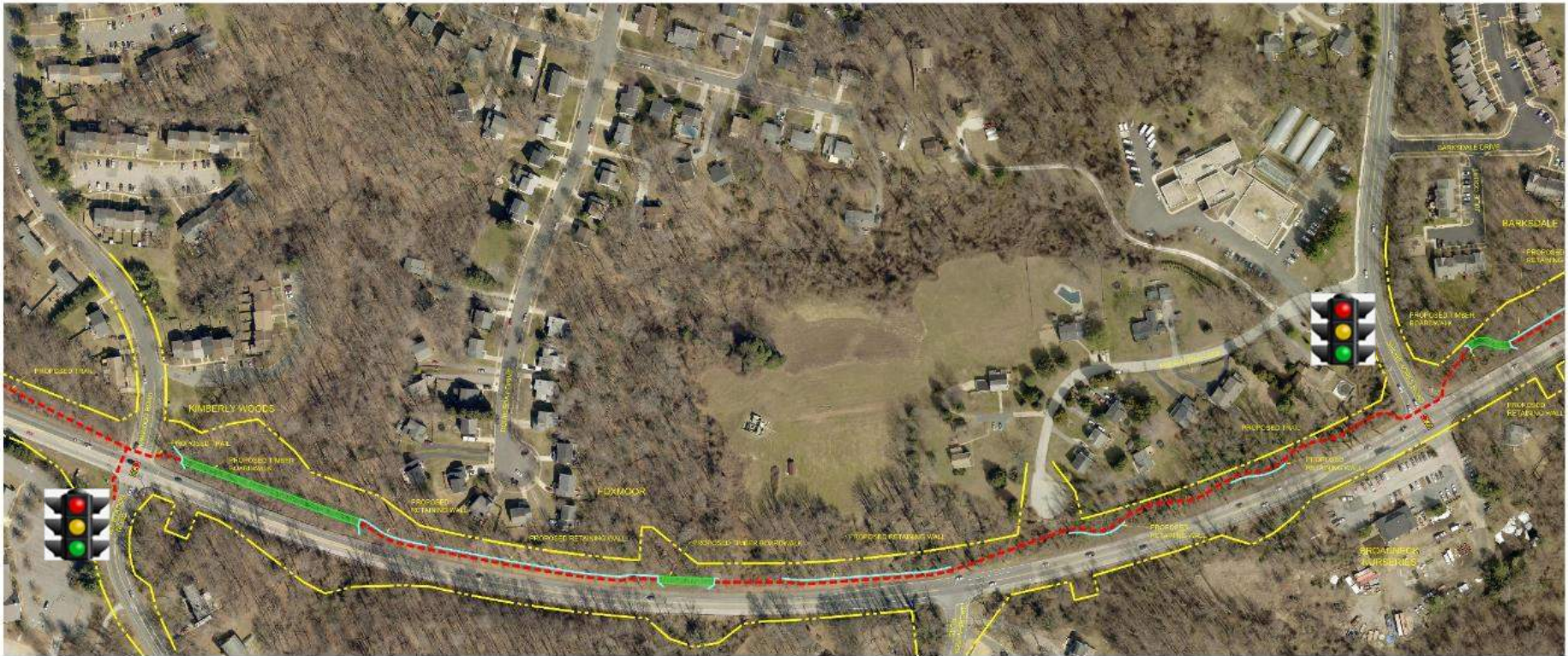
Jones Station Road (East) to Kimwood Road



DPWandYOU.com | *Making a difference, together*



Kimwood Road to Shore Acres Road



DPWandYOU.com | *Making a difference, together*



Shore Acres Road to Baydale Drive



DPWandYOU.com | *Making a difference, together*



Proposed Construction Schedule

- Anticipated Start of June 2022
- Anticipated Completion Early Spring 2024



DPWandYOU.com | *Making a difference, together*



Contact Information

- Construction Manager – KCI Technologies, 936 Ridgebrook Road, Sparks, MD 21152
- General Contractor – Urban N. Zink Contractor, Inc., 6924 Ebenezer Road, Chase, Maryland 21027
- Department of Public Works, Robert M. Fernandez, P. E., pwfern83@aacounty.org
- Department of Recreation and Parks, Dawn Thomas, CPRP, rpthom00@aacounty.org



DPWandYOU.com | *Making a difference, together*



Questions?

- Responses will be posted on the project page at
(<https://www.aacounty.org/departments/recreation-parks/parks/trails/broadneck-trail/index.html>)





Bureau of Utility Operations

24-Hour Emergency

Water Service: (410) 222-8400

Billing Inquiries: (410) 222-1144



Bureau of Engineering

General Inquiries: (410) 222-7500



Bureau of Waste Management Services

Bulk Trash Service / Curbside Collections: (410) 222-6100



Bureau of Watershed Protection and Restoration

General Inquiries: (410) 222-1072



Bureau of Highways

General Inquiries: (410) 222-7321

Snow Line: (410) 222-4040

Email: hwyscustomercare@aacounty.org

Customer Relations:

(410) 222-7582



DPWandYOU.com | *Making a difference, together*

