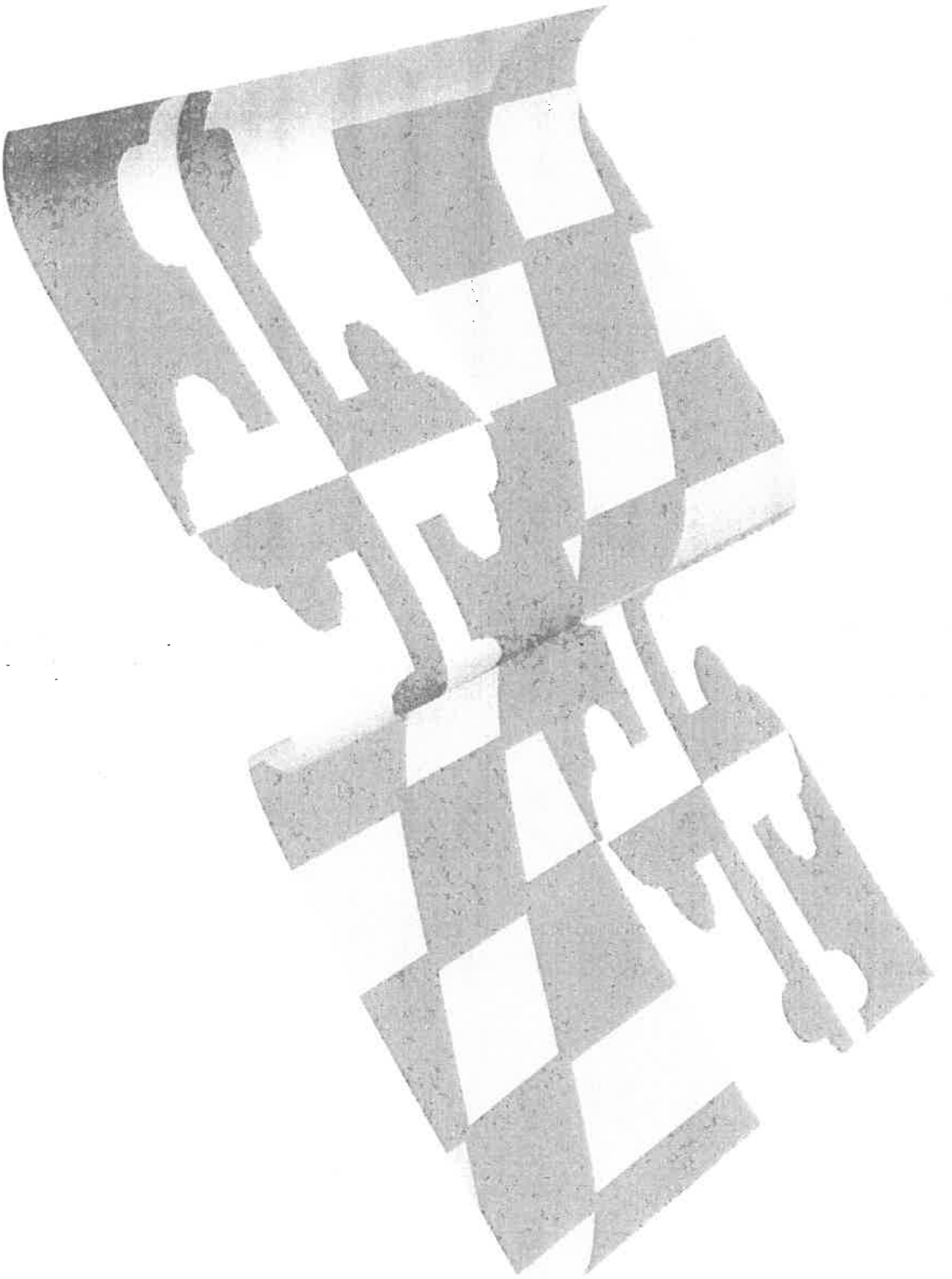


Anne Arundel County



Amoebae and Slime Molds

WILEY
PUBLISHED BY JOHN WILEY & SONS
NEW YORK, N. Y. 10001
LONDON, ENGLAND
CHICHESTER, ENGLAND



MDOT MARYLAND DEPARTMENT OF TRANSPORTATION

MARYLAND TRANSIT ADMINISTRATION

**MARYLAND TRANSIT ADMINISTRATION
CAPITAL PROGRAM SUMMARY
(\$ MILLIONS)**

	<u>FY 2019</u>	<u>FY 2020</u>	<u>FY 2021</u>	<u>FY 2022</u>	<u>FY 2023</u>	<u>FY 2024</u>	<u>SIX-YEAR TOTAL</u>
<u>Construction Program</u>							
Major Projects	763.4	529.5	417.4	448.5	248.7	267.5	2,675.0
System Preservation Minor Projects	98.0	64.6	51.5	111.2	62.0	86.7	474.0
<u>Development & Evaluation Program</u>	4.2	-	-	-	-	-	4.2
SUBTOTAL	865.6	594.0	468.9	559.7	310.8	354.2	3,153.1
<u>Capital Salaries, Wages & Other Costs</u>	12.5	12.5	12.5	12.5	13.0	14.0	77.0
TOTAL	878.1	606.5	481.4	572.2	323.8	368.2	3,230.1
Special Funds	304.5	158.6	105.6	212.7	152.5	153.9	1,087.8
Federal Funds	505.0	403.1	348.4	264.8	170.5	213.4	1,905.2
Other Funding	68.6	44.9	27.3	94.7	0.8	0.8	237.1



MARC

Freight

Light Rail

Baltimore Metro

Bus

Multi-Modal

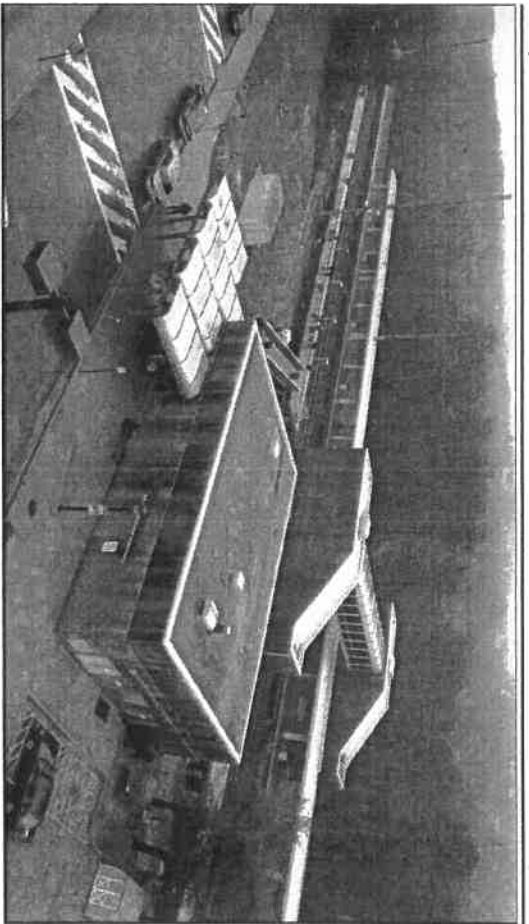
Locally Operated Transit Systems



**MARYLAND DEPARTMENT
OF TRANSPORTATION**

**MARYLAND TRANSIT
ADMINISTRATION**

MDOT MTA CONSTRUCTION PROGRAM



PROJECT: MARC BWI Rail Station Upgrades and Repairs

DESCRIPTION: Structural improvements to the BWI Rail Station parking garages and improvements to the existing station, including a more passenger-friendly station with additional seating.

PURPOSE & NEED SUMMARY STATEMENT: Repairs to both garages and upgrades to the existing infrastructure of the station are necessary to preserve the BWI Rail Station.

SMART GROWTH STATUS: Project Not Location Specific Not Subject to PFA Law

Project Inside PFA Grandfathered
 Project Outside PFA Exception Will Be Required
 PFA Status Yet to Be Determined Exception Granted

ASSOCIATED IMPROVEMENTS:
None.

- STATE GOALS :** Maryland Transportation Plan (MTP) Goals/Selection Criteria:
- Safety & Security
 - System Preservation
 - Quality of Service
 - Environmental Stewardship
 - Community Vitality
 - Economic Prosperity

EXPLANATION: This project includes inspection and repairs to garages as well as maintenance repairs and passenger improvements to the station.

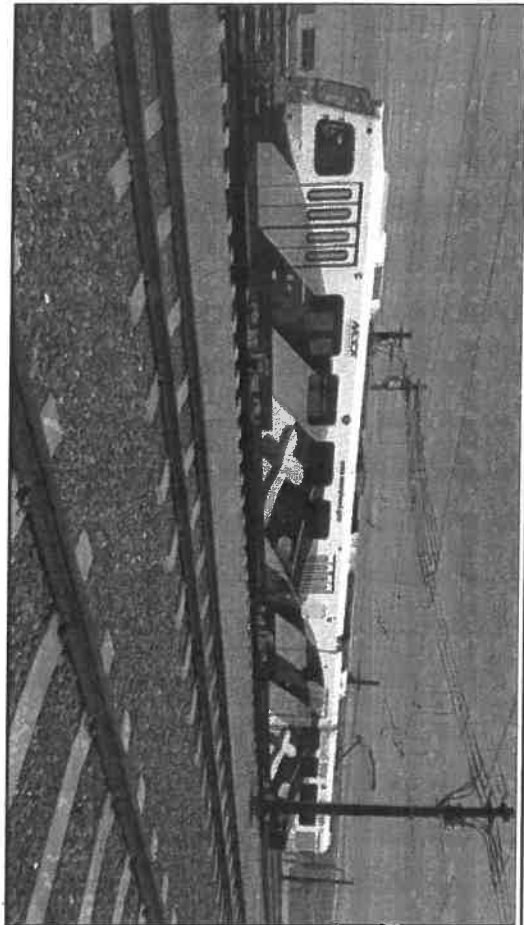
STATUS: Construction is underway.

POTENTIAL FUNDING SOURCE: SPECIAL FEDERAL GENERAL OTHER

SIGNIFICANT CHANGE FROM FY 2018 - 23 CTP: None.

PHASE	TOTAL ESTIMATED COST (\$000)		EXPEND THRU YEAR		CURRENT YEAR BUDGET		PROJECTED CASH REQUIREMENTS FOR PLANNING PURPOSES ONLY						SIX YEAR TOTAL COMPLETE	BALANCE TO COMPLETE
	2018	2019	2018	2019	2020	2021	2022	2023	2024	2025	2026			
Planning	405	405	0	0	0	0	0	0	0	0	0	0	0	0
Engineering	3,281	2,651	350	0	0	0	0	0	0	0	0	280	630	0
Right-of-way	0	0	0	0	0	0	0	0	0	0	0	0	0	0
Construction	10,060	3,216	6,462	237	237	0	0	0	0	0	0	145	6,844	0
Total	13,746	6,272	6,812	237	237	0	0	0	0	0	0	425	7,474	0
Federal-Aid	7,026	1,489	5,449	88	88	0	0	0	0	0	0	0	5,537	0

USAGE: In FY 2017 MARC annual ridership was 9.2 million.



PROJECT: Light Rail Vehicle Overhaul

DESCRIPTION: Perform a mid-life overhaul of the Light Rail fleet. A 15-year inspection and overhaul of the major and sub-assemblies of the vehicles will be performed. The effort will also involve identifying and replacing obsolete parts to improve vehicle performance. Project also supports ongoing overhauls of systems to ensure reliability and safety.

PURPOSE & NEED SUMMARY STATEMENT: Major overhaul of the Light Rail vehicles and upgrades of selected systems will ensure safe operation, reduce ongoing maintenance costs, increase vehicle reliability and availability, and increase passenger comfort and security.

SMART GROWTH STATUS: Project Not Location Specific Not Subject to PFA Law

Project Inside PFA Grandfathered
 Project Outside PFA Exception Will Be Required
 PFA Status Yet to Be Determined Exception Granted

ASSOCIATED IMPROVEMENTS:
 None.

STATE GOALS : Maryland Transportation Plan (MTP) Goals/Selection Criteria:

- Safety & Security
- System Preservation
- Quality of Service
- Environmental Stewardship
- Community Vitality
- Economic Prosperity

EXPLANATION: Projects include an ongoing and major overhaul of the Light Rail fleet to ensure safe, reliable service to the end of the cars' useful life.

POTENTIAL FUNDING SOURCE: SPECIAL FEDERAL GENERAL OTHER

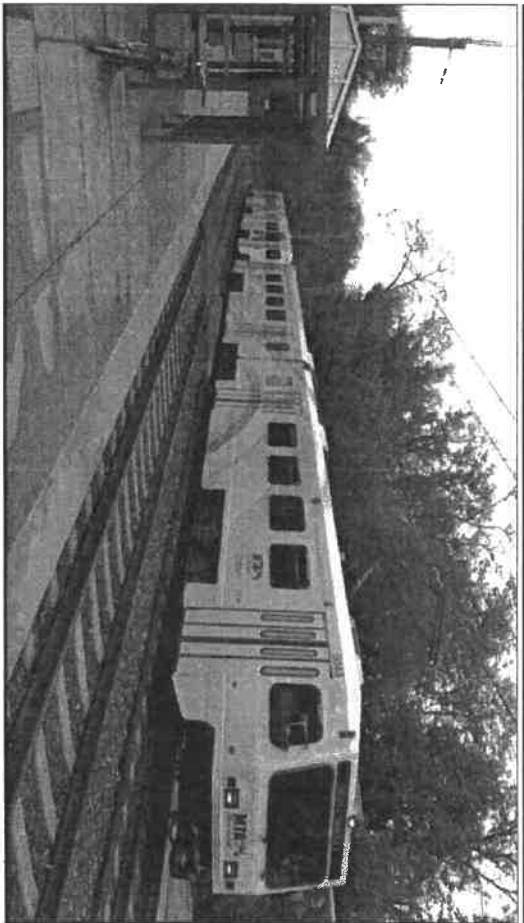
PHASE	TOTAL ESTIMATED COST (\$000)		EXPEND THRU YEAR		CURRENT YEAR BUDGET		PROJECTED CASH REQUIREMENTS FOR PLANNING PURPOSES ONLY				SIX YEAR TO COMPLETE	BALANCE
	2018	2019	2018	2019	2020	2021	2022	2023	2024			
Planning	0	0	0	0	0	0	0	0	0	0	0	0
Engineering	3,718	3,168	100	100	100	0	0	0	250	550	0	0
Right-of-way	0	0	0	0	0	0	0	0	0	0	0	0
Construction	197,397	97,543	37,350	37,350	30,078	29,901	400	350	1,775	99,854	0	0
Total	201,115	100,711	37,450	37,450	30,178	30,001	400	350	2,025	100,404	0	0
Federal-Aid	119,356	51,329	28,280	28,280	18,204	19,923	0	0	1,620	68,027	0	0

1153, 1346

STATUS: The mid-life overhaul began in FY 14. The first four overhauled cars have been received; three are in revenue service and one is undergoing testing. Ongoing minor overhauls are underway.

SIGNIFICANT CHANGE FROM FY 2018 - 23 CTP: Cost increased by \$4.0M due to increased costs for ongoing minor overhauls (\$2.1M) and additional support for the mid-life overhaul (\$1.9M).

USAGE: In FY 2017 Light Rail annual ridership was 7.4 million.



STATE GOALS : Maryland Transportation Plan (MTP) Goals/Selection Criteria:

- Safety & Security
- System Preservation
- Quality of Service
- Environmental Stewardship
- Community Vitality
- Economic Prosperity

EXPLANATION: This project includes inspection and repairs to the Light Rail's rail and cable systems to ensure safe and reliable service.

PROJECT: Light Rail Safety Improvements

DESCRIPTION: Funding to implement safety enhancements and improve Light Rail operations throughout the system. Projects include Maintenance of Way improvements such as grade crossing replacements and track repairs, cable replacement, train control signals uninterruptible power supply (UPS) upgrade, catenary surge protection device grounding replacement, replacement of the 5kV signal power system, and the installation of a wireless infrastructure along the entire length of the light rail line to allow for live video and system health monitoring.

PURPOSE & NEED SUMMARY STATEMENT: Repairs and replacements of equipment throughout the Light Rail system is required to reduce system failures and improve reliability.

SMART GROWTH STATUS: Project Not Location Specific Not Subject to PFA Law

- Project Inside PFA Grandfathered
- Project Outside PFA Exception Will Be Required
- PFA Status Yet to Be Determined Exception Granted

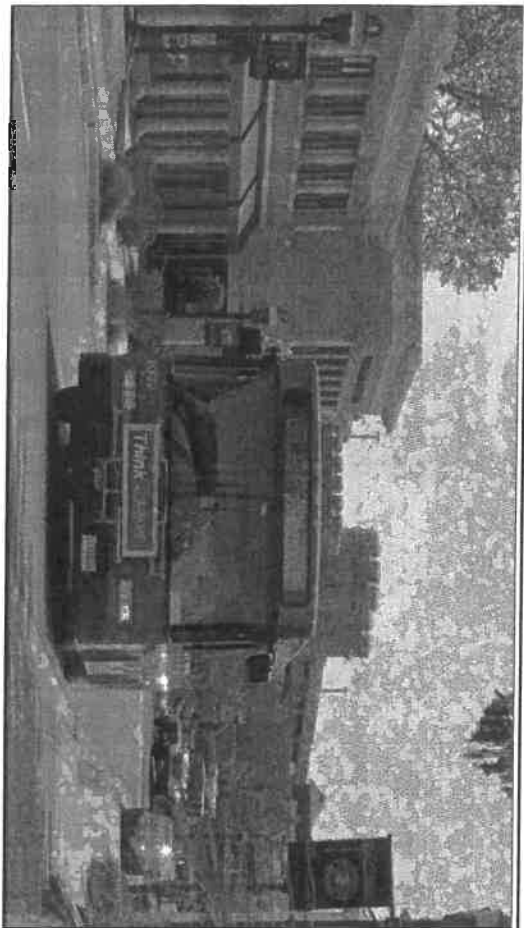
ASSOCIATED IMPROVEMENTS: Howard Street Rail and Interlocking Replacement project - Line 12

STATUS: Construction is underway for the Maintenance of Way Improvements and the cable replacement project.

SIGNIFICANT CHANGE FROM FY 2018 - 23 CTP: Project cost increased by \$58.1M for Maintenance of Way preservation efforts.

PHASE	TOTAL ESTIMATED COST (\$000)		EXPEND THRU YEAR		CURRENT YEAR BUDGET		PROJECTED CASH REQUIREMENTS FOR PLANNING PURPOSES ONLY						SIX YEAR TO TOTAL COMPLETE	BALANCE
	2018	2019	2018	2019	2020	2021	2022	2023	2024	2025	2026			
Planning	221	221	0	0	0	0	0	0	0	0	0	0	0	0
Engineering	9,253	5,076	171	0	0	0	0	0	0	4,006	4,177	0	0	0
Right-of-Way	0	0	0	0	0	0	0	0	0	0	0	0	0	0
Construction	74,976	9,421	14,553	29,100	14,700	881	1,083	5,238	65,555	9,244	69,732	0	0	0
Total	84,450	14,718	14,724	29,100	14,700	881	1,083	9,244	69,732	7,393	7,393	0	0	0
Federal-Aid	7,616	223	0	0	0	0	0	0	0	7,393	7,393	0	0	0

0489, 1465, 1466



PROJECT: Locally Operated Transit Systems Capital Procurement Projects (Local Jurisdictions)

DESCRIPTION: Funding to rural and small urban jurisdictions for transit vehicles, equipment, and facilities. In addition, MDT MTA provides rideshare funds to Baltimore City, Anne Arundel, Baltimore, Calvert, Carroll, Frederick, Harford, Howard, Montgomery and Prince George's Counties, and the Tri-County Council for Southern Maryland to promote the use of carpools and vanpools. MDT MTA facilitates federal funds for locally-sponsored projects.

JUSTIFICATION: Intense use of equipment and increased service demand requires regular vehicle replacement and expansion as well as adequate support facilities providing reliable maintenance service. The ridesharing program provides citizens with information on expanded commute options and provides companies with technical expertise needed to meet federal clean air requirements.

SMART GROWTH STATUS: Project Not Location Specific Not Subject to PFA Law

Project Inside PFA Grandfathered
 Project Outside PFA Exception Will Be Required
 PFA Status Yet to Be Determined Exception Granted

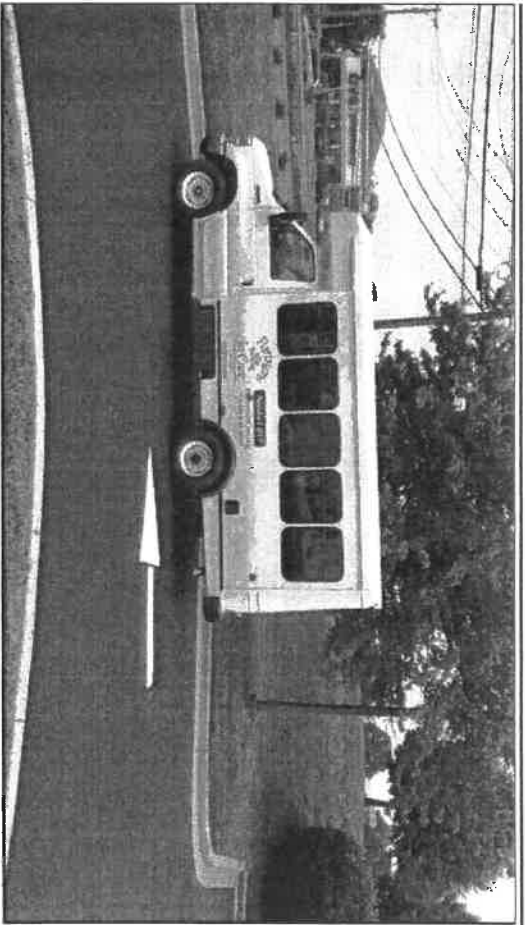
ASSOCIATED IMPROVEMENTS:
 Montgomery County Local Bus Program - Line 26
 Prince George's County Local Bus Program - Line 27
 Assistance to Private Non-Profit Agencies for the Transportation of the Elderly and Persons with Disabilities - Line 25

STATUS: Funds are awarded based on an annual application cycle.

SIGNIFICANT CHANGE FROM FY 2018 - 23 CTP: Project cost increased by \$25.5M due to the addition of FY 24, additional federal funds, and additional contribution from others.

PHASE	POTENTIAL FUNDING SOURCE:						SIX YEAR TO COMPLETE	BALANCE
	TOTAL ESTIMATED COST (\$000)	EXPEND THRU 2018	CURRENT YEAR 2019	BUDGET YEAR 2020	SPECIAL <input checked="" type="checkbox"/>	FEDERAL <input checked="" type="checkbox"/>		
Planning	285	146	29	20	20	50	139	0
Engineering	41,339	29,603	2,729	3,027	1,495	1,495	11,736	0
Right-of-way	0	0	0	0	0	0	0	0
Construction	271,479	154,286	21,252	24,749	23,843	13,822	117,193	0
Total	313,103	184,035	24,010	27,796	25,358	15,367	129,068	0
Federal-Aid	262,498	155,587	18,643	22,207	21,298	11,963	106,911	0

0045, 0211, 0217, 0218, 1347, 1348, 1355, 1356, 1373, 1426, 1431, 1437, 1443, 1455, 1461, 1467, 1509



PROJECT: Assistance to Private Non-Profit Agencies for the Transportation of the Elderly and Persons with Disabilities

DESCRIPTION: Federal funding is available to assist non-profit agencies with transportation for the elderly and persons with disabilities. MDTA works with non-profits to apply for federal aid and meet compliance requirements.

JUSTIFICATION: Program supports the State's goal of providing transportation services to the elderly and persons with disabilities.

SMART GROWTH STATUS: Project Not Location Specific Not Subject to PFA Law
 Project Inside PFA Grandfathered
 Project Outside PFA Exception Will Be Required
 PFA Status Yet to Be Determined Exception Granted

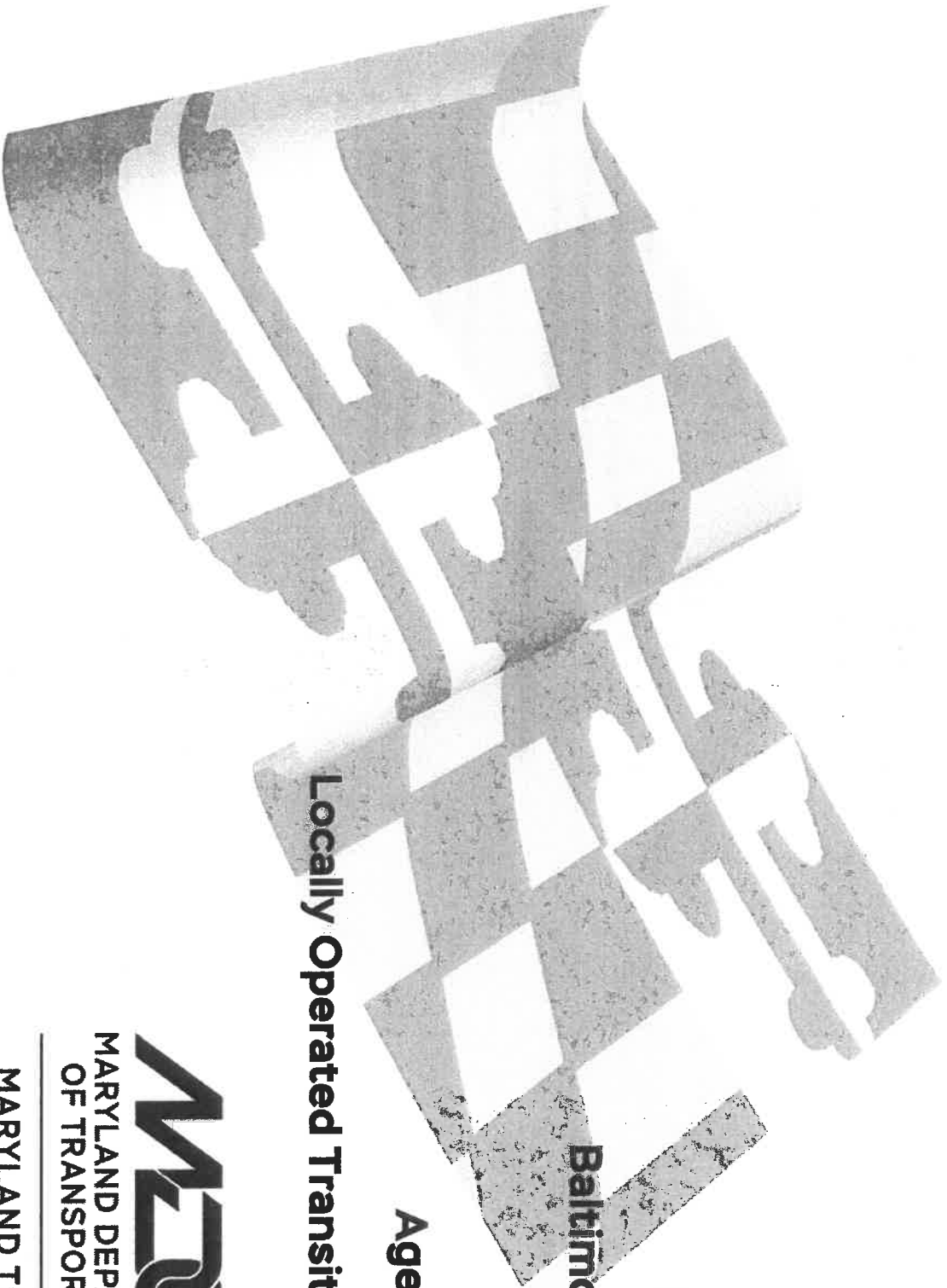
ASSOCIATED IMPROVEMENTS:
 Locally Operated Transit Systems Capital Procurement Projects (Local Jurisdictions) - Line 24
 Locally Operated Transit Systems - Line 46

STATUS: Funds are awarded based on a biennial application cycle.

SIGNIFICANT CHANGE FROM FY 2018 - 23 CTP: Project cost increased by \$4.0M due to the addition of FY 24.

PHASE	POTENTIAL FUNDING SOURCE:						SIX YEAR TO COMPLETE
	TOTAL ESTIMATED COST (\$000)	EXPEND THRU YEAR	CURRENT YEAR	BUDGET YEAR	PROJECTED CASH REQUIREMENTS FOR PLANNING PURPOSES ONLY	YEAR	
Planning	0	0	0	0	0	0	0
Engineering	0	0	0	0	0	0	0
Right-of-way	0	0	0	0	0	0	0
Construction	68,115	38,277	3,810	6,748	5,005	6,405	29,838
Total	68,115	38,277	3,810	6,748	5,005	6,405	29,838
Federal-Aid	54,065	30,195	3,048	5,398	4,004	5,124	23,870

0210



MARC

Freight

Light Rail

Baltimore Metro

Bus

Agency Wide

Locally Operated Transit Systems



**MARYLAND DEPARTMENT
OF TRANSPORTATION**

**MARYLAND TRANSIT
ADMINISTRATION**

MDOT MTA MINOR PROJECTS

LOCALLY OPERATED TRANSIT SYSTEMS

MARYLAND TRANSIT ADMINISTRATION -- LINE 46 (cont'd)

ITEM NO.	DESCRIPTION AND IMPROVEMENT TYPE	FY19 + FY20 PROJECT COST (\$000's)	CONSTRUCTION START
<u>LOCALLY OPERATED TRANSIT SYSTEMS (cont'd)</u>			
<u>ALLEGANY COUNTY FY 2019 AND 2020</u>			
1	Preventive Maintenance (FY19)	350	FY 2019
2	Small Replacement Bus - 630 (FY19)	60	FY 2019
3	Transportation Development Plan (FY19)	100	FY 2019
4	Vehicle Cameras APC (FY15)	237	FY 2019
5	Vehicle Parking Addition (FY16)	12	FY 2019
6	1 Medium Replacement Bus - 304 (FY18)	300	FY 2020
7	1 Medium Replacement Bus - 305 (FY18)	300	FY 2020
8	1 Medium Replacement Bus (FY13)	309	FY 2020
9	Medium Duty under 30' Replacement 303 (FY17)	175	FY 2020
10	Medium Replacement Bus - 307 (FY19)	249	FY2020
11	Passenger Facility Construction (FY17)	350	Ongoing
12	Preventive Maintenance (FY18)	350	Ongoing
<u>ANNAPOLIS FY 2019 AND 2020</u>			
1	Preventive Maintenance (FY19)	400	FY 2019
2	Small Cutaway Replacement Bus - 300 (FY19)	87	FY 2019
3	Small Cutaway Replacement Bus - 301 (FY19)	87	FY 2019
4	Preventive Maintenance (FY17)	350	Ongoing
5	Preventive Maintenance (FY18)	400	Ongoing
6	40 Bus Stop Shelters	422	Underway
7	Electronic Farebox System (FY13)	300	Underway
8	Electronic Farebox System (FY16)	200	Underway

LOCALLY OPERATED TRANSIT SYSTEMS

MARYLAND TRANSIT ADMINISTRATION -- LINE 46 (cont'd)

ITEM NO.	DESCRIPTION AND IMPROVEMENT TYPE	FY19 + FY20 PROJECT COST (\$000's)	CONSTRUCTION START
<u>LOCALLY OPERATED TRANSIT SYSTEMS (cont'd)</u>			
<u>ANNE ARUNDEL COUNTY FY 2019 AND 2020</u>			
1	Mobile Radios (FY19 5339)	35	FY 2019
2	Ridesharing (FY19)	197	FY 2019
3	1 Medium Replacement Bus - 9548 (FY19 5339)	180	FY 2020
4	1 Medium Replacement Bus - 9548 (FY19 5339)	180	FY 2020
5	1 Medium Replacement Bus - 9548 (FY18)	194	FY 2020
6	1 Medium Replacement Bus - 9549 (FY18)	194	FY 2020
<u>BALTIMORE CITY FY 2019 AND 2020</u>			
1	Ridesharing (FY19)	82	FY 2019
2	Ridesharing (FY17)	80	Ongoing
3	Ridesharing (FY18)	82	Ongoing
<u>BALTIMORE COUNTY FY 2019 AND 2020</u>			
1	BMC Ridesharing (FY19)	170	FY 2019
2	BMC Ridesharing (FY17)	170	Ongoing
3	BMC Ridesharing (FY18)	170	Ongoing

LOCALLY OPERATED TRANSIT SYSTEMS

MARYLAND TRANSIT ADMINISTRATION -- LINE 46 (cont'd)

ITEM NO.	DESCRIPTION AND IMPROVEMENT TYPE	TOTAL PROJECT COST (\$000's)	CONSTRUCTION START
<u>LOCALLY OPERATED TRANSIT SYSTEMS (cont'd)</u>			
<u>ELDERLY/DISABLED NON-PROFITS FY 2018 COMPLETIONS</u>			
1	Action in Maturity - 1 Small Replacement Bus (FY16/17)	60	Complete
2	Action in Maturity - 1 Small Replacement Bus (FY17 SS)	60	Complete
3	Action in Maturity - Preventive Maintenance (FY16/17)	12	Complete
4	Adult Day Care Corp of Calvert County - Preventive Maintenance (FY16/17)	3	Complete
5	Allegheny County HRDC, Inc. - Preventive Maintenance (FY16/17)	27	Complete
6	Allegheny County HRDC, Inc. - Small Expansion Bus (FY18/19)	65	Complete
7	Appalachian Parent Assoc - Small Replacement Bus - 15 (FY18/19)	65	Complete
8	Appalachian Parent Assoc - 1 Small Replacement Bus (FY16/17)	60	Complete
9	ARC of Carroll County - 1 Small Expansion Bus (FY16/17)	60	Complete
10	ARC of Carroll County - 1 Small Replacement Bus (FY16/17)	60	Complete
11	ARC of Carroll County - 2 Small Replacement Buses (FY18/19)	130	Complete
12	ARC of Northern Chesapeake - Preventive Maintenance (FY16/17)	22	Complete
13	ARC of Northern Chesapeake Region - 1 Small Expansion Bus (FY18/19)	65	Complete
14	ARC of Northern Chesapeake Region - 1 Small Replacement Bus (FY18/19)	65	Complete
15	ARC of Northern Chesapeake Region - 2 Small Replacement Buses (FY16/17)	120	Complete
16	ARC of Washington County - 1 Small Replacement Bus (FY16/17)	60	Complete
17	ARC of Washington County - 1 Small Replacement Bus (FY18/19)	65	Complete
18	Arundel Lodge - 1 Small Replacement Bus - 6 (FY18/19)	65	Complete
19	Associated Catholic Charities - 1 Small Expansion Bus (FY16/17)	60	Complete
20	Associated Catholic Charities - 1 Small Replacement Buses (FY18/19)	65	Complete
21	Associated Catholic Charities - 2 Small Replacement Buses (FY16/17)	120	Complete
22	Associated Catholic Charities - Preventive Maintenance (FY16/17)	18	Complete
23	Athelas - 2 Small Replacement Buses (FY18/19)	130	Complete
24	Bay Community Support Services - 1 Small Expansion Bus (FY18/19)	65	Complete
25	Bay Community Support Services - 3 Small Replacement Buses (FY18/19)	195	Complete

LOCALLY OPERATED TRANSIT SYSTEMS

MARYLAND TRANSIT ADMINISTRATION -- LINE 46 (cont'd)

ITEM NO.	DESCRIPTION AND IMPROVEMENT TYPE	TOTAL PROJECT COST (\$'000's)	CONSTRUCTION START
LOCALLY OPERATED TRANSIT SYSTEMS (cont'd)			
<u>ELDERLY/DISABLED NON-PROFITS FY 2018 COMPLETIONS (cont'd)</u>			
26	Bayside Community Network - 1 Small Replacement Bus (FY16/17)	60	Complete
27	Bayside Community Network - 1 Small Replacement Bus (FY17 SS)	60	Complete
28	Bayside Community Network - 2 Small Replacement Buses (FY18/19)	130	Complete
29	Center for Life Enrichment - 2 Small Replacement Buses (FY16/17)	120	Complete
30	Change, Inc. - 2 Small Replacement Buses (FY18/19)	130	Complete
31	Charles County Nursing and Rehabilitation - 1 Small Replacement Bus (FY16/17)	60	Complete
32	Charles County Nursing and Rehabilitation - 2 Small Replacement Buses (FY18/19)	130	Complete
33	Charles County Nursing and Rehabilitation - Preventive Maintenance (FY16/17)	24	Complete
34	Chesapeake Care Resources, Inc. - 1 Small Replacement Bus (FY17 SS)	60	Complete
35	Chesapeake Care Resources, Inc. - 2 Small Replacement Buses (FY16/17)	120	Complete
36	Chesapeake Care Resources, Inc. - 2 Small Replacement Buses (FY18/19)	130	Complete
37	Chesapeake Care Resources, Inc. - 6 Wheelchair Accessibility Systems (FY17 SS)	3	Complete
38	Chesapeake Care Resources, Inc. - Preventive Maintenance (FY16/17)	33	Complete
39	Comprehensive Housing Assistance - 1 Small Expansion Bus (FY16/17)	60	Complete
40	Comprehensive Housing Assistance - 1 Small Expansion Bus (FY17 SS)	60	Complete
41	Daybreak Adult Day Services - 1 Small Replacement Bus (FY16/17)	60	Complete
42	Daybreak Adult Day Services - Preventive Maintenance (FY16/17)	21	Complete
43	Delmarva Community Services - Mobility Management (FY18/19 S310)	325	Complete
44	Delmarva Community Transit - 1 Small Replacement Bus (FY16/17)	60	Complete
45	Delmarva Community Transit - 3 Small Replacement Buses (FY17 SS)	180	Complete
46	Delmarva Community Transit - 3 Small Replacement Buses (FY18/19)	195	Complete
47	Diakon - 1 Small Replacement Bus (FY16/17)	60	Complete
48	Diakon - 1 Small Replacement Bus (FY18/19)	65	Complete
49	Dorchester County Comm on Aging (Pleasant Day) - 1 Small Replacement Bus (FY16/17)	60	Complete
50	Dorchester County Comm on Aging (Pleasant Day) - 1 Small Replacement Bus (FY17 SS)	60	Complete

LOCALLY OPERATED TRANSIT SYSTEMS

MARYLAND TRANSIT ADMINISTRATION -- LINE 46 (cont'd)

ITEM NO.	DESCRIPTION AND IMPROVEMENT TYPE	TOTAL PROJECT COST (\$'000's)	CONSTRUCTION START
<u>LOCALLY OPERATED TRANSIT SYSTEMS (cont'd)</u>			
<u>ELDERLY/DISABLED NON-PROFITS FY 2018 COMPLETIONS (cont'd)</u>			
76	Kent Center - Preventive Maintenance (FY12)	2	Complete
77	LifeBridge Health - 1 Small Expansion Bus (FY16/17)	60	Complete
78	LifeBridge Health - 2 Small Replacement Buses (FY16/17)	120	Complete
79	LifeBridge Health - 2 Small Replacement Buses (FY18/19)	130	Complete
80	Lifestyles, Inc. - 1 Small Expansion Bus (FY16/17)	60	Complete
81	Lifestyles, Inc. - 1 Small Expansion Bus (FY17 SS)	60	Complete
82	Lower Shore Enterprises - 2 Small Replacement Buses (FY16/17)	120	Complete
83	Lower Shore Enterprises - 2 Small Replacement Buses (FY18/19)	130	Complete
84	Mosaic - 1 Small Replacement Bus (FY18/19)	65	Complete
85	Partners In Care - 2 Small Expansion Buses (FY18/19)	130	Complete
86	Progress Unlimited, Inc. - 1 Small Expansion Bus (FY17 SS)	60	Complete
87	Progress Unlimited, Inc. - 1 Small Expansion Bus (FY18/19)	65	Complete
88	Progress Unlimited, Inc. - 2 Small Expansion Buses (FY16/17)	120	Complete
89	Progress Unlimited, Inc. - 2 Small Expansion Buses (FY18/19)	130	Complete
90	Providence Center - 3 Small Expansion Buses (FY18/19)	195	Complete
91	Providence Center - Equipment - radios (FY16/17)	58	Complete
92	Shore Upl - 2 Small Replacement Buses (FY18/19)	130	Complete
93	Spring Dell - 1 Small Replacement Bus (FY17 SS)	60	Complete
94	Spring Dell - 1 Small Replacement Bus (FY18/19)	65	Complete
95	Spring Dell - 2 Small Replacement Buses (FY16/17)	120	Complete
96	St. Mary's Adult Medical Day Care - 1 Small Replacement Bus (FY18/19)	65	Complete
97	Star Community - 1 Small Replacement Bus (FY16/17)	60	Complete
98	The League for People with Disabilities - 2 Small Expansion Buses (FY18/19)	130	Complete
99	The League for People with Disabilities - 3 Small Replacement Buses (FY18/19)	195	Complete
100	Unified Community Connections - Preventive Maintenance	12	Complete

LOCALLY OPERATED TRANSIT SYSTEMS

MARYLAND TRANSIT ADMINISTRATION -- LINE 46 (cont'd)

ITEM NO.	DESCRIPTION AND IMPROVEMENT TYPE	FY19 + FY20 PROJECT COST (\$'000's)	CONSTRUCTION START
<u>LOCALLY OPERATED TRANSIT SYSTEMS (cont'd)</u>			
<u>ELDERLY/DISABLED NON-PROFITS FY 2019 AND 2020 (cont'd)</u>			
26	Appalachian Parent Assoc - Preventive Maintenance (FY18/19)	44	Ongoing
27	ARC of Northern Chesapeake Region - Preventive Maintenance (FY18/19)	45	Ongoing
28	ARC of Southern Maryland - Mobility Management (FY18 SS)	100	Ongoing
29	ARC of Southern Maryland - Preventive Maintenance (FY18/19)	5	Ongoing
30	ARC of Washington County - Preventive Maintenance (FY16/17)	15	Ongoing
31	ARC of Washington County - Preventive Maintenance (FY18/19)	8	Ongoing
32	Associated Catholic Charities - Preventive Maintenance (FY18/19)	55	Ongoing
33	Athelias - Preventive Maintenance (FY18/19)	10	Ongoing
34	Bay Community Support Services - Preventive Maintenance (FY18/19)	25	Ongoing
35	Bayside Community Network - Preventive Maintenance (FY16/17)	30	Ongoing
36	Bayside Community Network - Preventive Maintenance (FY18/19)	23	Ongoing
37	Center for Life Enrichment - Preventive Maintenance (FY16/17)	33	Ongoing
38	Charles County Nursing and Rehabilitation - Preventive Maintenance (FY18/19)	19	Ongoing
39	Chesapeake Care Resources, Inc. - Preventive Maintenance (FY17 SS)	4	Ongoing
40	Chesapeake Care Resources, Inc. - Preventive Maintenance (FY18/19)	5	Ongoing
41	Comprehensive Housing Assistance - Preventive Maintenance (FY16/17)	3	Ongoing
42	Comprehensive Housing Assistance - Preventive Maintenance (FY17 SS)	6	Ongoing
43	Comprehensive Housing Assistance - Preventive Maintenance (FY18/19)	10	Ongoing
44	Daybreak Adult Day Services - Preventive Maintenance (FY17 SS)	10	Ongoing
45	Daybreak Adult Day Services - Preventive Maintenance (FY18 SS)	59	Ongoing
46	Diakon - Preventive Maintenance (FY16/17)	3	Ongoing
47	Diakon - Preventive Maintenance (FY18/19)	4	Ongoing
48	Dorchester County Comm on Aging - Preventive Maintenance (FY18/19)	17	Ongoing
49	Dove Pointe, Inc. - Preventive Maintenance (FY17 SS)	48	Ongoing
50	Dove Pointe, Inc. - Preventive Maintenance (FY18/19)	100	Ongoing

LOCALLY OPERATED TRANSIT SYSTEMS

MARYLAND TRANSIT ADMINISTRATION -- LINE 46 (cont'd)

ITEM NO.	DESCRIPTION AND IMPROVEMENT TYPE	FY19 + FY20 PROJECT COST (\$000's)	CONSTRUCTION START
<u>LOCALLY OPERATED TRANSIT SYSTEMS (cont'd)</u>			
<u>ELDERLY/DISABLED NON-PROFITS FY 2019 AND 2020 (cont'd)</u>			
51	Easter Seals Baltimore - Preventive Maintenance (FY16/17)	24	Ongoing
52	Easter Seals Baltimore - Preventive Maintenance (FY17 SS)	24	Ongoing
53	Easter Seals Baltimore - Preventive Maintenance (FY18/19)	44	Ongoing
54	Easter Seals Hagerstown - Preventive Maintenance (FY18 SS)	8	Ongoing
55	Easter Seals Hagerstown - Preventive Maintenance (FY18/19)	15	Ongoing
56	Freedom Landing - Preventive Maintenance (FY16/17)	9	Ongoing
57	Freedom Landing - Preventive Maintenance (FY18/19)	3	Ongoing
58	Friends Aware - Preventive Maintenance (FY16/17)	42	Ongoing
59	Friends Aware - Preventive Maintenance (FY18/19)	23	Ongoing
60	Hopkins Elder Plus - Preventive Maintenance (FY16/17)	53	Ongoing
61	Hopkins Elder Plus - Preventive Maintenance (FY18/19)	35	Ongoing
62	Kent Center - Preventive Maintenance (FY16/17)	9	Ongoing
63	Kent Center - Preventive Maintenance (FY17 SS)	6	Ongoing
64	Kent Center - Preventive Maintenance (FY18/19)	5	Ongoing
65	LifeBridge Health - Mobility Management (FY18/19)	100	Ongoing
66	Lifestyles, Inc. - Preventive Maintenance (FY16/17)	2	Ongoing
67	Mosaic - Preventive Maintenance (FY16/17)	56	Ongoing
68	Mosaic - Preventive Maintenance (FY18/19)	51	Ongoing
69	Partners In Care - Preventive Maintenance (FY16/17)	5	Ongoing
70	Partners In Care - Preventive Maintenance (FY18/19)	20	Ongoing
71	Progress Unlimited, Inc. - Preventive Maintenance (FY16/17)	76	Ongoing
72	Progress Unlimited, Inc. - Preventive Maintenance (FY17 SS)	19	Ongoing
73	Progress Unlimited, Inc. - Preventive Maintenance (FY18 SS)	30	Ongoing
74	Progress Unlimited, Inc. - Preventive Maintenance (FY18/19)	70	Ongoing
75	Shore Upl - Preventive Maintenance (FY16/17)	12	Ongoing