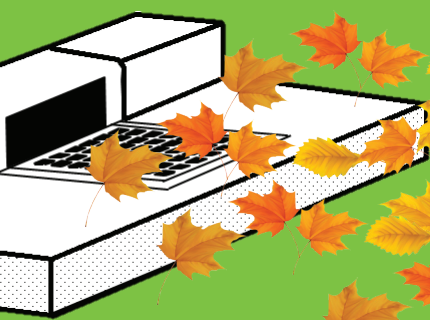


DON'T BLOW IT...

in a County right-of-way, storm drain, or waterway.



Yard waste
clogs storm drains
and pollutes
our waterways.

**Bag and bundle your yard waste for collection
or compost it to better protect**

YOUR property, YOUR community, and YOUR environment.

YOU HAVE OPTIONS. PLEASE MAKE THE RIGHT CHOICE!

Trouble Free Yard Waste Collection *

- Occurs all year round.
- Has no limit to the amount of yard waste you can put out for collection.
- Must be placed in biodegradable paper yard waste bags or reusable containers made of metal or rigid plastic and equipped with handles.
- Containers must be marked with large "X" so collectors know it is yard waste, not trash.
- Brush/branches must be placed in container or bundled and tied with twine.
- Yard waste should not include cardboard.
- Bags/containers/bundles may not weigh more than 40 lbs each. Tree limbs and branches must be less than 4 ft in length, with max branch diameter of 4 inches.
- No wire or metal ties to secure bags.

**For households receiving County-provided collections*

Composting Your Yard Waste

Homeowners can reduce the amount of yard waste by composting. Composting is a natural process that turns organic matter into an excellent soil supplement. Benefits of composting include:

Preventing useful material from your yard and kitchen from being wasted in a landfill.

Reducing amount of material being landfilled.

Reducing yard work and the expense of store bought soils and fertilizers

Enhancing the growth of flowers, vegetables, shrubs, and houseplants.

Replacing nutrients in the soil, improves moisture retention, moderates temperatures, controls weeds, and decreases soil erosion.

Anne Arundel County collects and composts yard waste to keep this valuable resource from taking up much-needed space at the County's Landfill.

Compost bins are available at all Recycling Centers.

Call 410-222-6100 or visit DPW online at:

www.aacounty.org/departments/public-works/waste-management/yard-waste.