

Annual Use of Force Statistics

Calendar Year

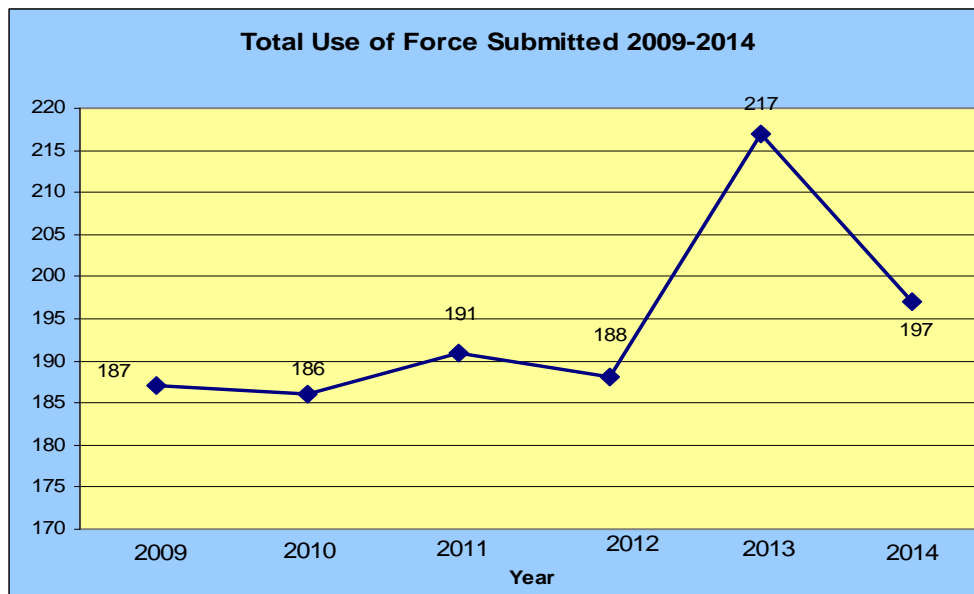
2014

Reporting Overview

In 2014, a total of one hundred forty-one (141) case numbers were assigned to incidents where force was used. As a result of multiple officers per case number, there were one hundred and ninety-seven (197) Use of Force reports submitted by individual Officers.

The chart below indicates the years 2009 through 2014 Use of Force Reports and the year to year change. On average since 2008 there were 167 Use of Force Reports, averaging a year to year change of plus one (1). However, it should be noted that there is a significant decline from 2012, 2013 and 2014. The average change for the last three years is plus three (3).

YEAR	USE OF FORCE REPORTS	YEAR TO YEAR CHANGE
2009	187	
2010	186	-1
2011	191	5
2012	188	-3
2013	217	29
2014	197	-20
Average	167	1



Injuries to Officers

The number of officers sustaining injuries has remained consistent over the past five years with a decrease of 2% between 2013 and 2014.

OFFICER'S INJURED

YEAR	INJURIES	PERCENTAGE
2014	31	16%
2013	40	18%
2012	18	10%
2011	30	15%
2010	29	15%
2009	31	17%

Injuries to Suspects

Of the one hundred ninety-eight (198) suspects involved in the use of force *incidents*, one hundred forty-seven (147) either had a visible injury or indicated they were injured. Departmental canine’s bites accounted for one (1) suspect injury.

Summary of Use of Force Incidents

The following information, along with supporting graphs, summarizes 2014 Use of Force incidents reported by Anne Arundel County Police Officers.

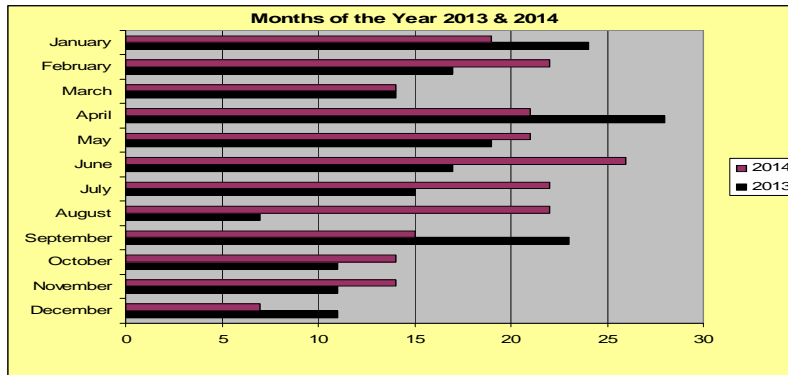
Top Five Trending Use of Force Incidents

2014			2013	
Domestic	26		Disorderly	40
Disorderly	24		Domestic	28
Check Subject	20		Assault - Officer	22
DUI/DWI	17		Emergency Eval.	21
Assault	16		Theft	17

2012			2011	
Disorderly	34		Disorderly	41
Assault - Other	25		Emergency Eval.	24
Emergency Eval.	24		Warrant Service	23
Domestic	22		Assault - Other	19
DUI/DWI	18		Traffic Stop	16

Top Three Months

Analysis of the months that had the most reported Use of Force incidents reveals there is no pattern or trend related to the month of the year.



Top Three Days

Analysis of the days of the week in years prior having the most reported Use of Force incidents increases towards the end of the week and over the weekend. In more recent years that trend has dissipated. There is no clear trend in most recent years with a pattern peaking on the weekends. In 2014 there is no indication of a pattern related to a particular day of the week to note an increase in Use of Force activity.

2013

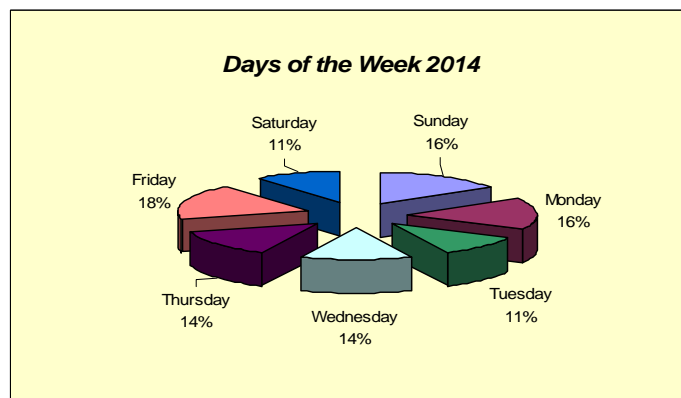
Sunday 20%
Monday 19%
Tues/Wed 15%

2012

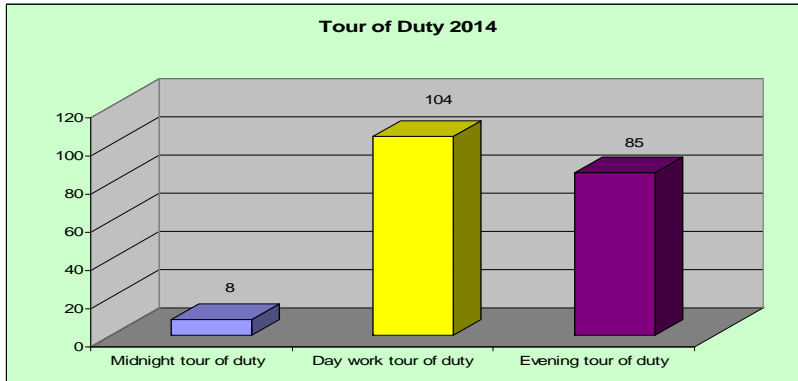
Tuesday 21%
Friday 17%
Monday 15%

2011

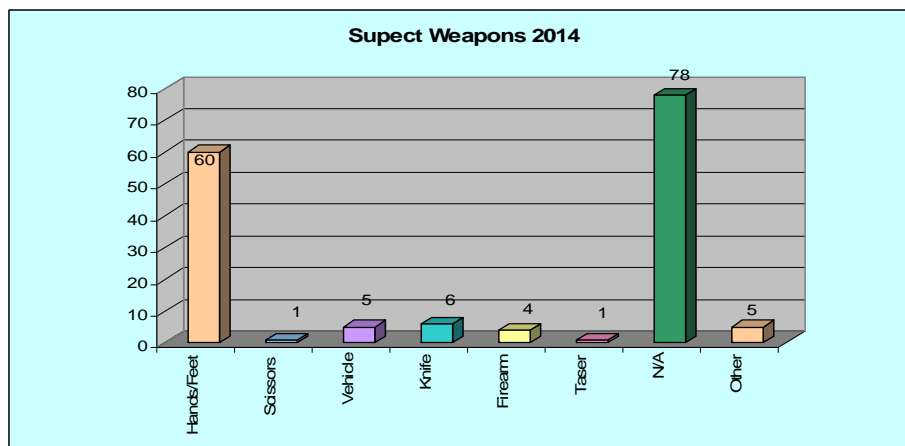
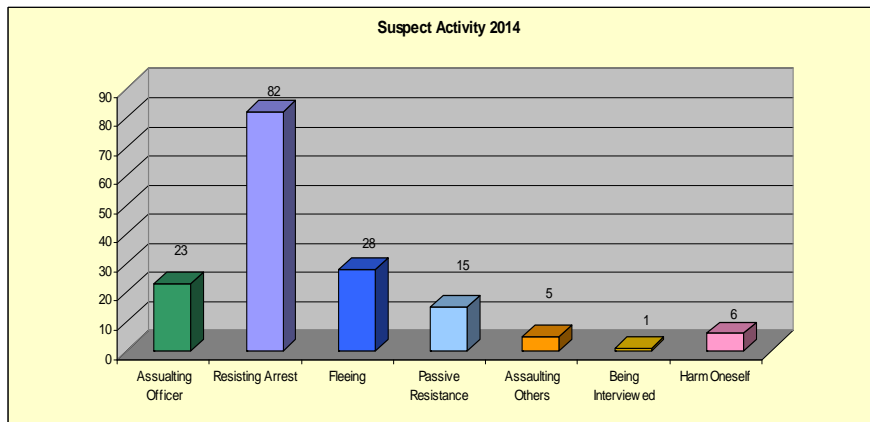
Sat/Sun 17%
Thursday 16%
Fri/Sun 14%



In 2014 Use of Force incidents showed a dramatic change in the number of incidents during the midnight shift. The majority of incidents were reported during the day work tour of duty with evening shift slightly behind.

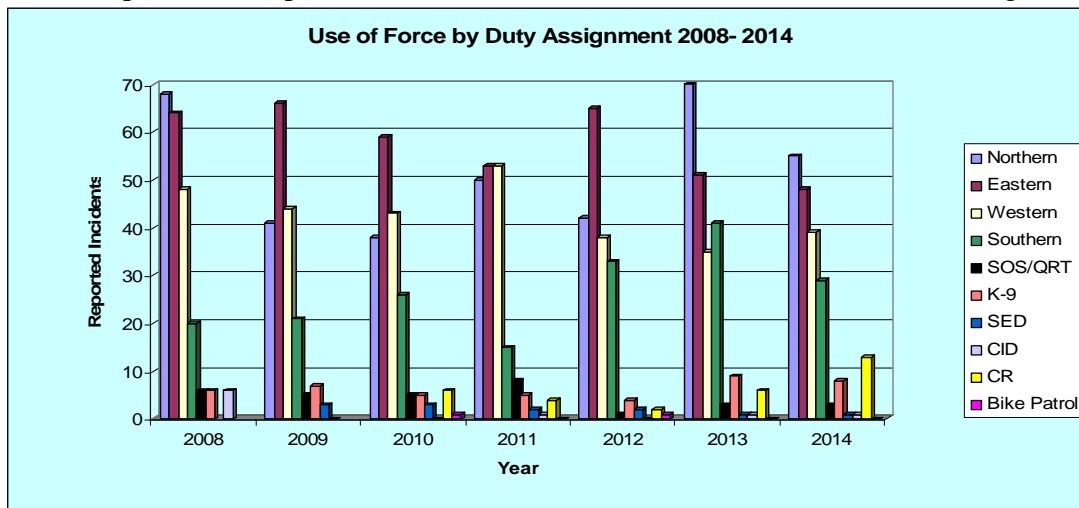


The following data and charts depict the activity of the suspect just prior to the application of force by involved officers. This data is based on the number of suspects – one hundred and sixty (160):



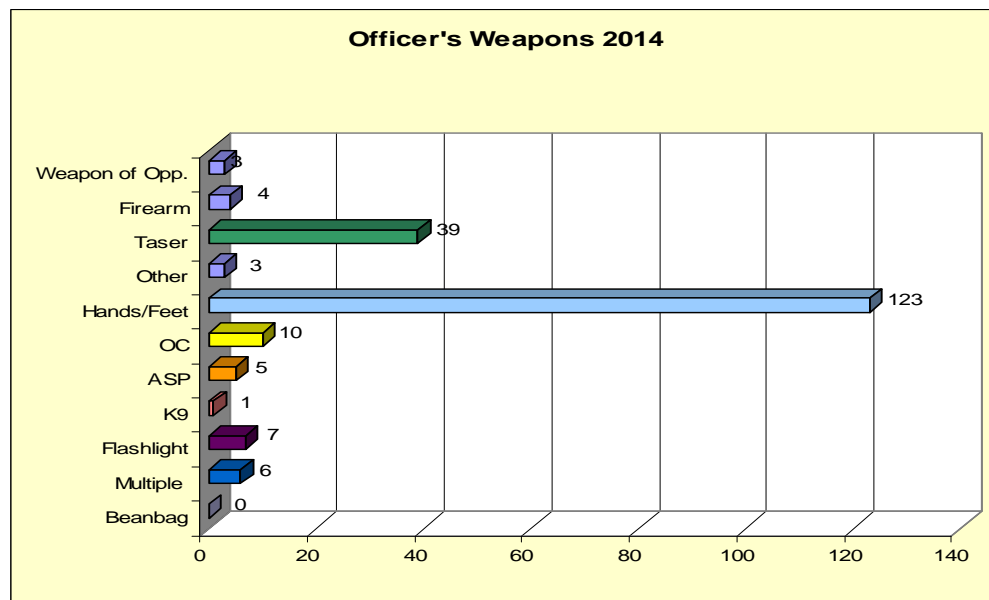
**Use of Force incidents reported when a suspect utilized a weapon. A suspect who was passive, hindering or fleeing, were categorized as N/A. The totals for suspect weapons, does not directly reflect the total number of incidents reported.

Below is a comparison of reported Use of Force incidents based on the officer's assignment.



Other data considered in the Use of Force analysis are the officer's work assignment, attire, on/off duty, and their weapon(s), during the incident.

<u>OFFICERS' UNIFORM</u>		<u>DUTY STATUS</u>	
TYPE OF ATTIRE	CASES	STATUS	CASES
Patrol Uniform	176	On Duty	191
Plain Clothes	13	Secondary	1
Tactical Uniform	7	Off Duty	5
Bike Patrol Uniform	0		
	197		197



** The number of use of force reports does not directly represent the number of officer weapons. Some cases used multiple weapons for a single incident.