

# Annual Use of Force Statistics

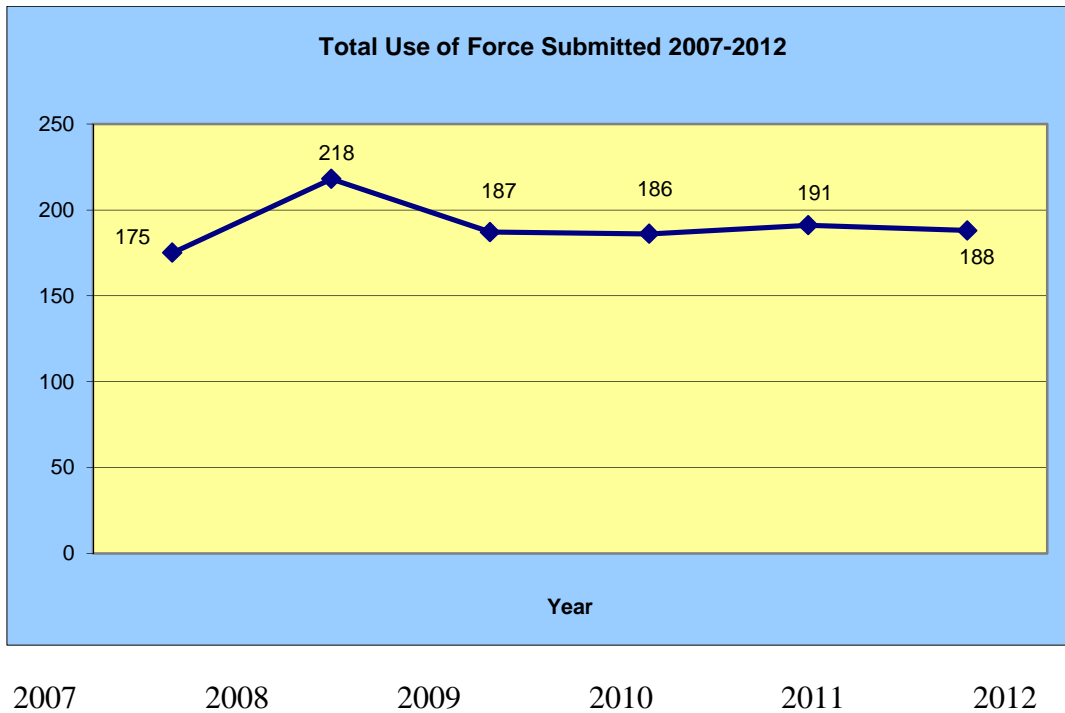
Calendar Year  
2012

## Reporting Overview

In 2012, there were one hundred-eighty eight (188) uses of force reported. One hundred-fifty nine (159) case numbers were assigned to incidents where force was used. Nineteen (19) case numbers involved multiple officers and or suspects. The total number of suspects involved was one hundred-fifty nine (159).

Previous years reviewed indicated that in 2011, there were 191 uses of force reported. In 2010, there were 186 uses of force reported and in 2009 there were 187 uses of force reported.

YEAR	USE OF FORCE REPORTS	YEAR TO YEAR CHANGE
2007	175	+2
2008	218	+43
2009	187	-31
2010	186	-1
2011	191	+5
2012	188	-3
<b>Average</b>	<b>188</b>	<b>25</b>



### **Injuries to Officers**

Of the one hundred-eighty eight (188) reported use of forces, eighteen (18) officers or 10% reported that they sustained some type of injury from the encounter.

### **Injuries to Suspects**

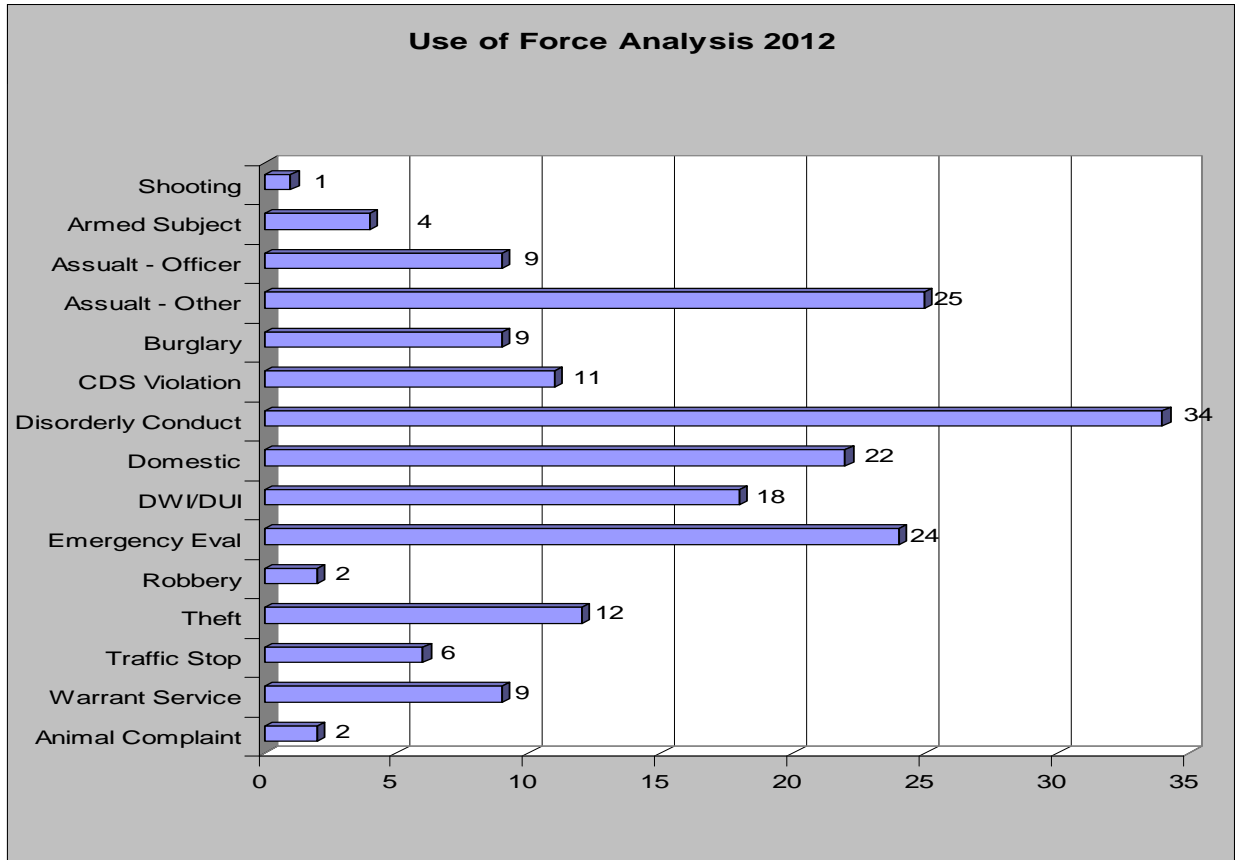
Of the one hundred fifty-nine (159) suspects involved in the use of force, one hundred forty-three (143) or 90% either had a visible injury or indicated they were injured.

### **Summary of Use of Force Incidents**

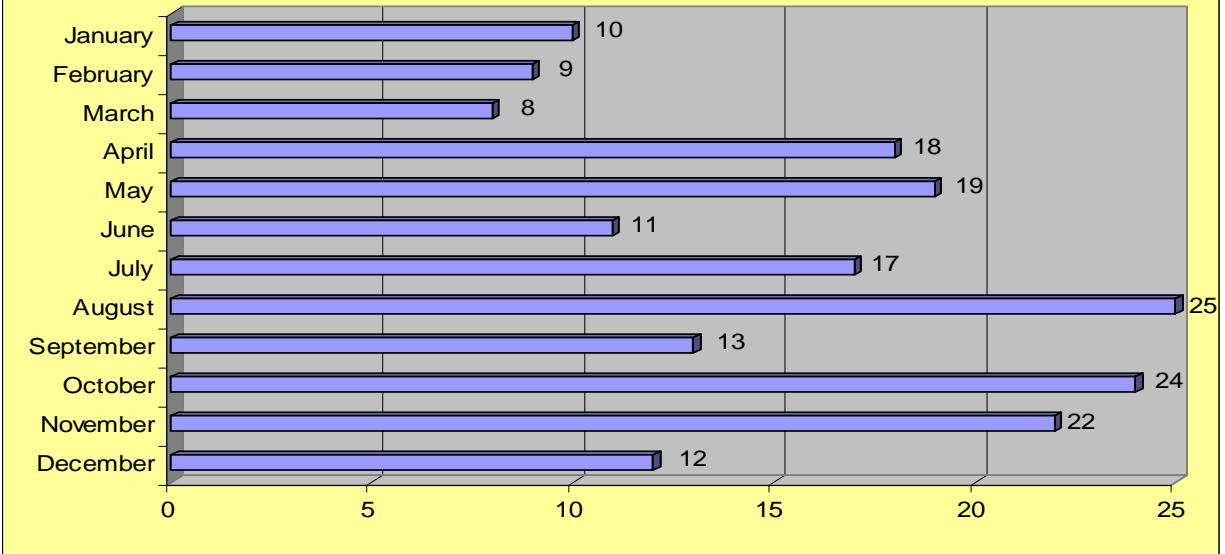
The following information, some with supporting graphs, summarizes the year 2012 reported uses of force by police officers with our department. This information is based on the one hundred eighty-eight (188) Use of Force incidents, unless otherwise indicated. Since 2007, Emergency Evaluations incidents have doubled, placing it as one of the top incidents that lead to officers applying force over the past few years.

1) Disorderly Conduct	(34)
2) Assault – Other	(25)
3) Emergency Evaluations	(24)
4) Domestic	(22)
5) DWI/DUI	(18)
6) Theft	(12)
7) CDS Violation	(11)
8) Assault (Officer), Burglary, Warrant Service	(09)
9) Traffic Stop	(08)
10) Armed Subject	(04)

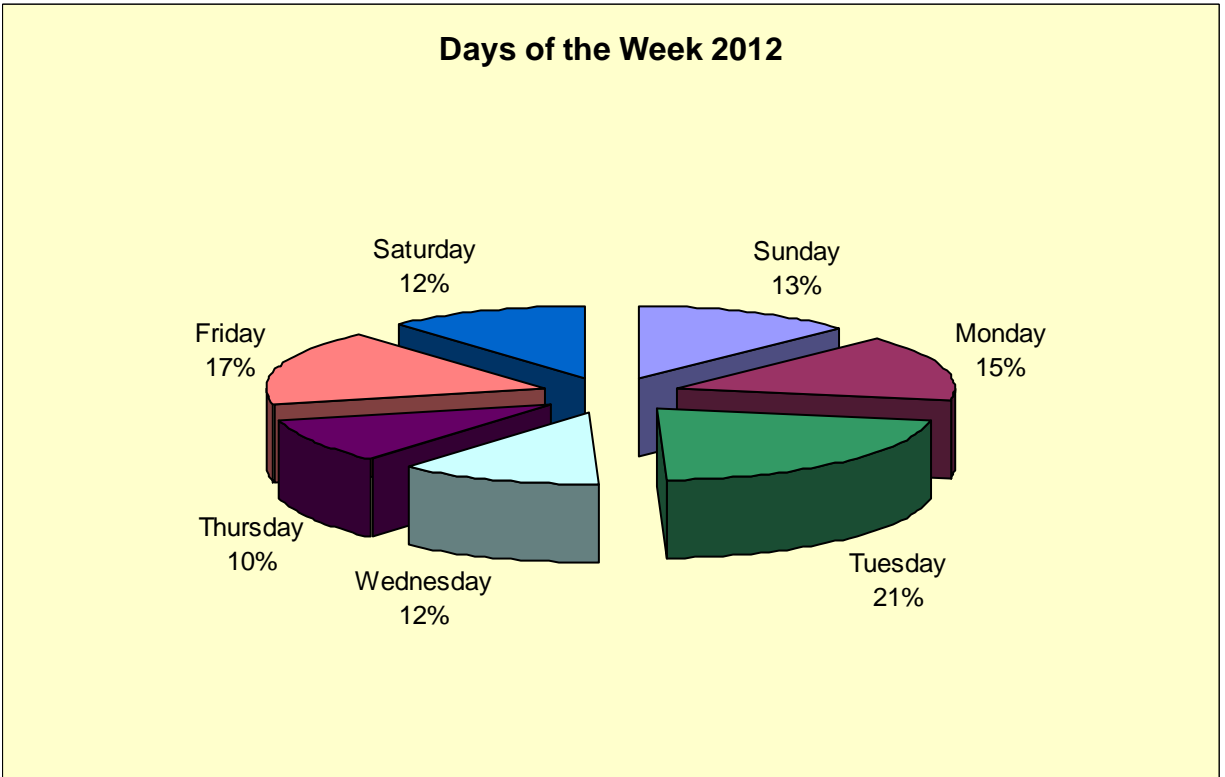
The following charts depict summary data of when force was employed by Anne Arundel County Police Officers during 2012:

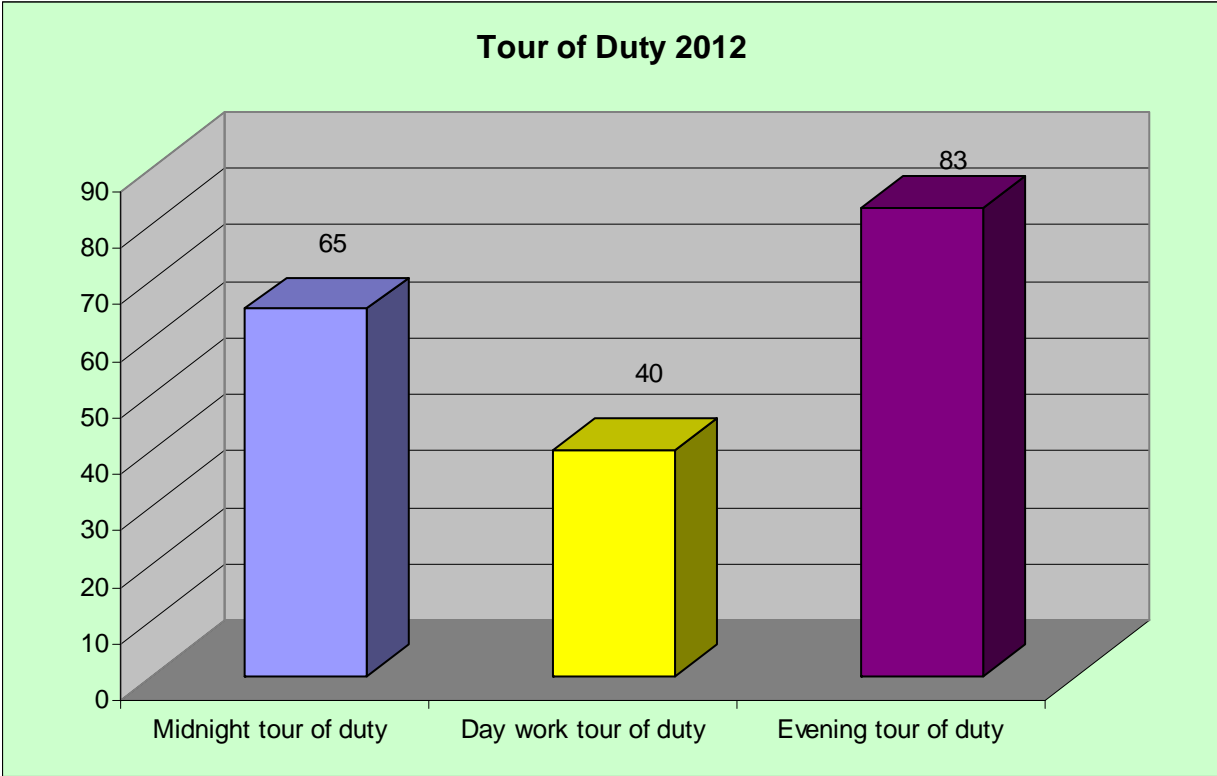


### Months of the Year 2012



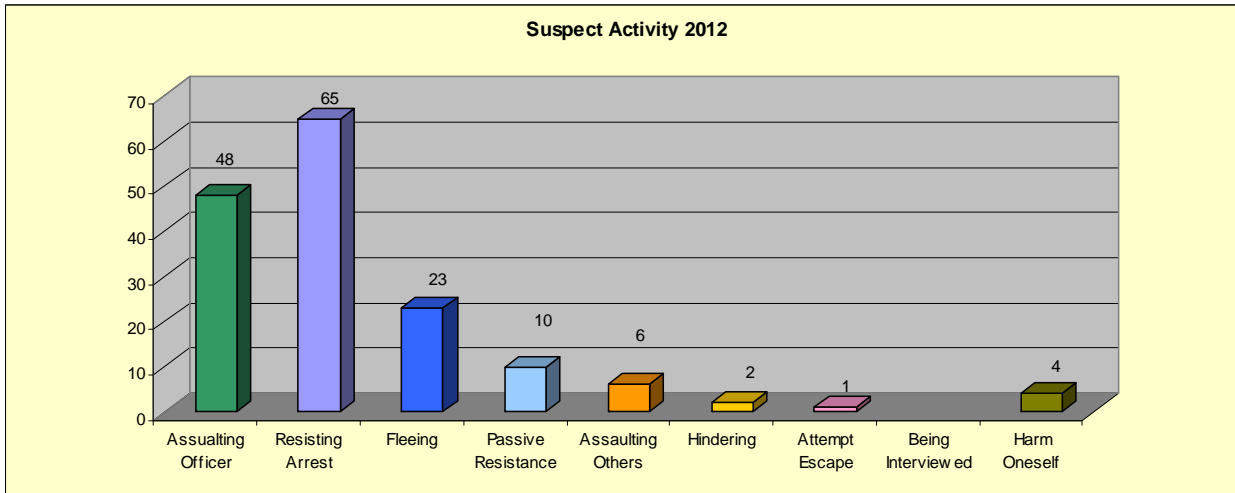
### Days of the Week 2012



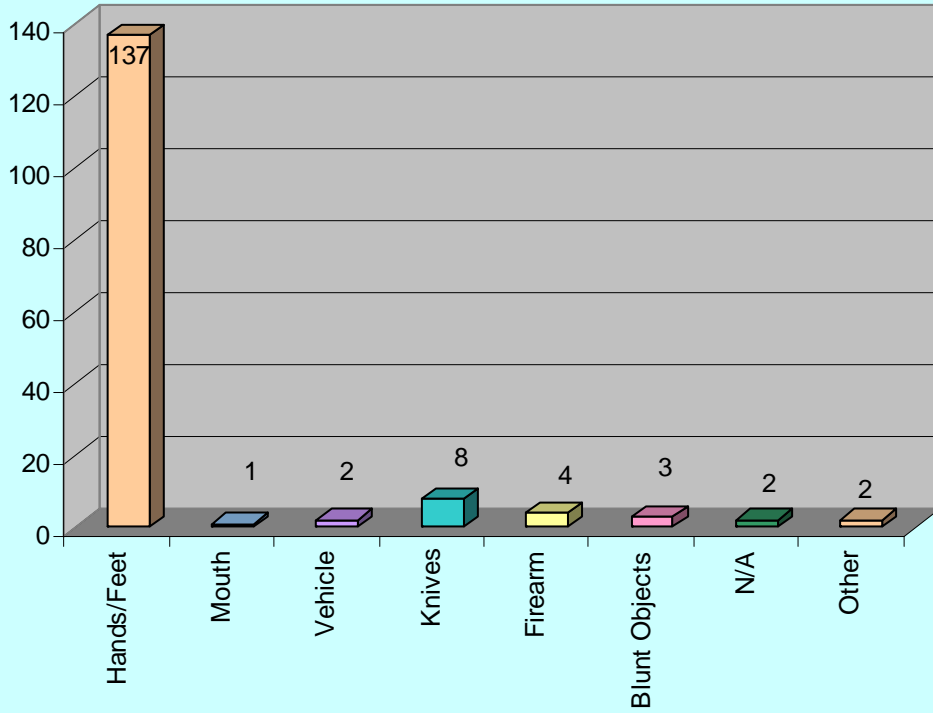


The majority of use of force incidents occurred during the evening shift, accounting for eighty-three (83) or 44% of all use of force incidents. Sixty-five (65) incidents or 35% were reported during the midnight tour and forty (40) or 21% of the incidents occurred during day work hours.

The following data and charts depict the activity of the suspect just prior to the application of force. This data is based on the number of suspects – one hundred fifty-nine (159):

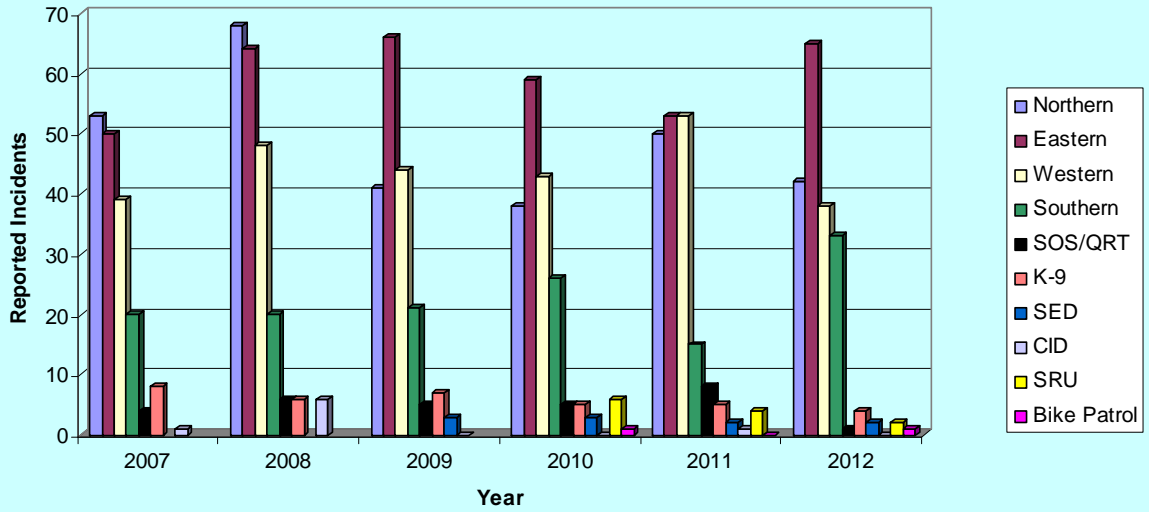


### Supect Weapons 2012



Below is a comparison of the districts in regard to use of force since 2007:

### Use of Force by District 2007- 2012



Other data considered in the use of force analysis are the officer's work assignment, attire, on/off duty, and their weapon(s), (use of force continuum) during the incident.

**DUTY ASSIGNMENT**

ASSIGNMENT	CASES	PERCENTAGE
NORTHERN	42	22%
EASTERN	65	35%
WESTERN	38	20%
SOUTHERN	33	18%
SOS/QRT	1	1%
K-9	4	2%
SED	2	1%
SRU	2	1%
CID	1	1%
	188	100%

**OFFICERS' UNIFORM**

TYPE OF ATTIRE	CASES
Patrol Uniform	176
Plain Clothes	7
Tactical Uniform	5
Bike Patrol Uniform	0
	188

**DUTY STATUS**

STATUS	CASES
On Duty	182
Secondary	4
Off Duty	2
	188



### Officer's Weapons 2012

