



ANNE  
ARUNDEL  
COUNTY

M A R Y L A N D

Partnership for Children, Youth & Families



**FY 2020-2022 Community Plan**  
for Children, Youth and Families

# Thank you! Board & Guiding Coalition

## **PARTNERSHIP BOARD:**

Michael Yeakey, Chair  
Kim Davidson, Vice Chair  
Rick Anthony  
Pastor Steve Hall  
Milena Kornyl  
Jim Lighthizer  
Adrienne Mickler  
Doug Mohler  
Susan Nolte  
Billie Penley  
Chris Rosenthal  
Ryan Voegtlin  
Carnitra White

## **GUIDING COALITION:**

Tim Altomare  
Brett Hovington  
Charlestine Fairley  
Paula Davis  
Ramona Burnett  
Mary Spencer  
Georgia Noone-Sharrod  
Derric Wright  
William Rowel  
Derek Matthews  
Tatiana Klein

## **STRATEGIC ADVISORS:**

**Joan Gillece**, Center for Innovation in Trauma-Informed Approaches

**Paul DiLorenzo**, Casey Family Programs

**Carl Snowden**, African American Caucus

## **PARTNERSHIP STAFF:**

Dr. Pamela Brown, Executive Director  
Allison Holstrom  
Diana Taylor  
Ayana Jackson  
Elma Jones  
Vernon Osborne  
Gabrielle McCrary  
Gwendolyn Branch  
Julie Vanskiver  
Lauren Fretz  
Lisa Kovacs  
Mizetta Wilson  
Sue Powell  
Twila Mohammed-Davis  
TyJuan Thompson  
Vince Taylor  
Shay Brooks



# Community Plan for Children, Youth and Families

## FY17-FY19 Accomplishments:



Community of Hope in Brooklyn Park



Expanded programming to South County



Pop-Up Youth Center + plans for permanent site



Increased focus on reducing racial disparities and gap between rich and poor



Reduced poverty in North County



Poverty Amidst Plenty VI + Community Health Needs Assessment (CHNA) + In-Depth Look at Domestic Violence and Sexual Abuse



Initiative to reduce youth gang & gun violence in Annapolis

## Creating the FY20-FY22 Plan

### MULTIPLE PLANNING MEETINGS WITH:

- ✓ Local Management Board (13 members)
- ✓ Guiding Coalition (15 members)
- ✓ 3 Strategic Advisors
- ✓ 3 community work groups:
  - North County/Brooklyn Park
  - Annapolis
  - South County



**26**  
key informant interviews

**2**

Racial Equity trainings



**2**

debriefs

**11**



focus groups for needs assessment

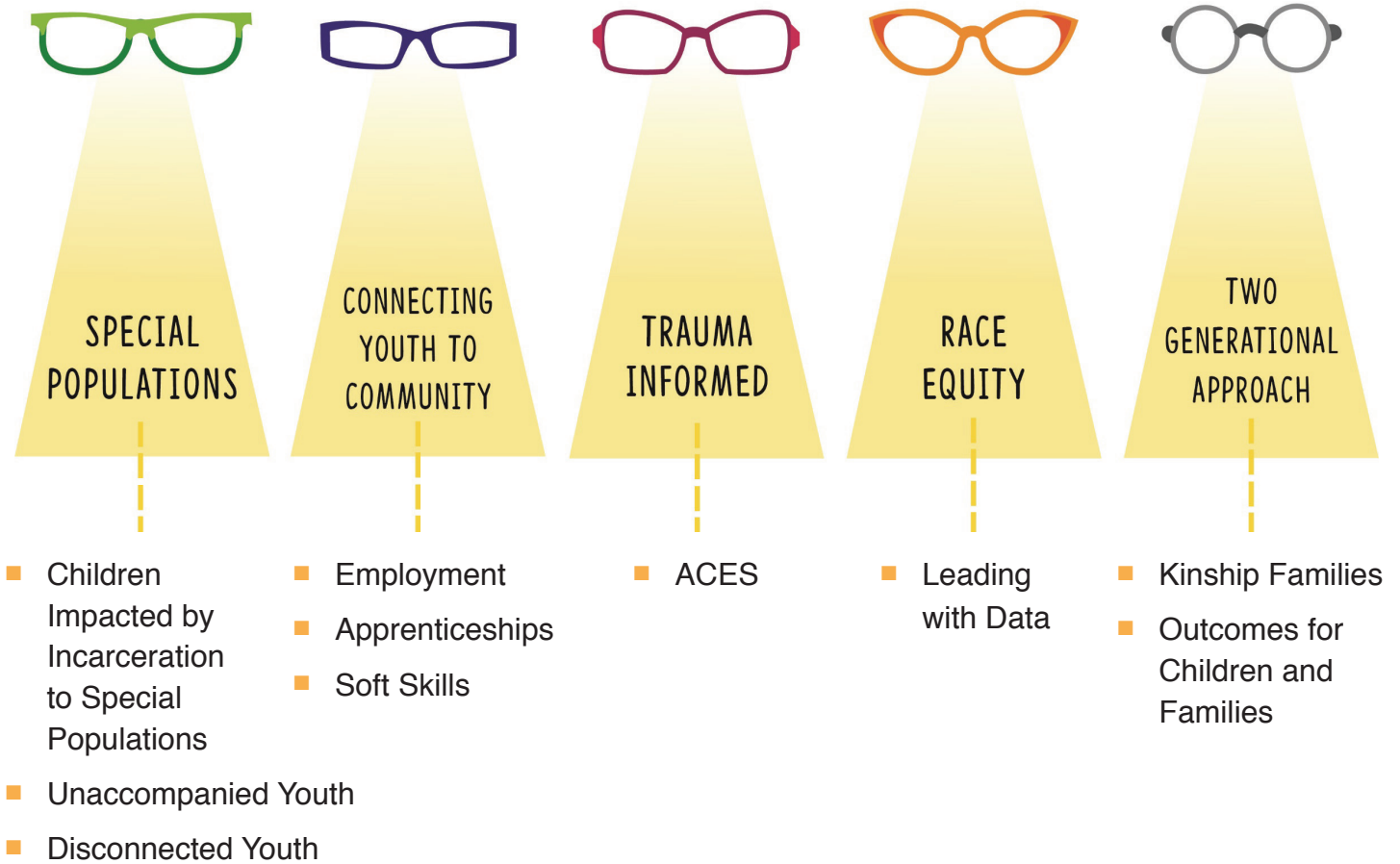


**12**

Turn the Curve data discussions

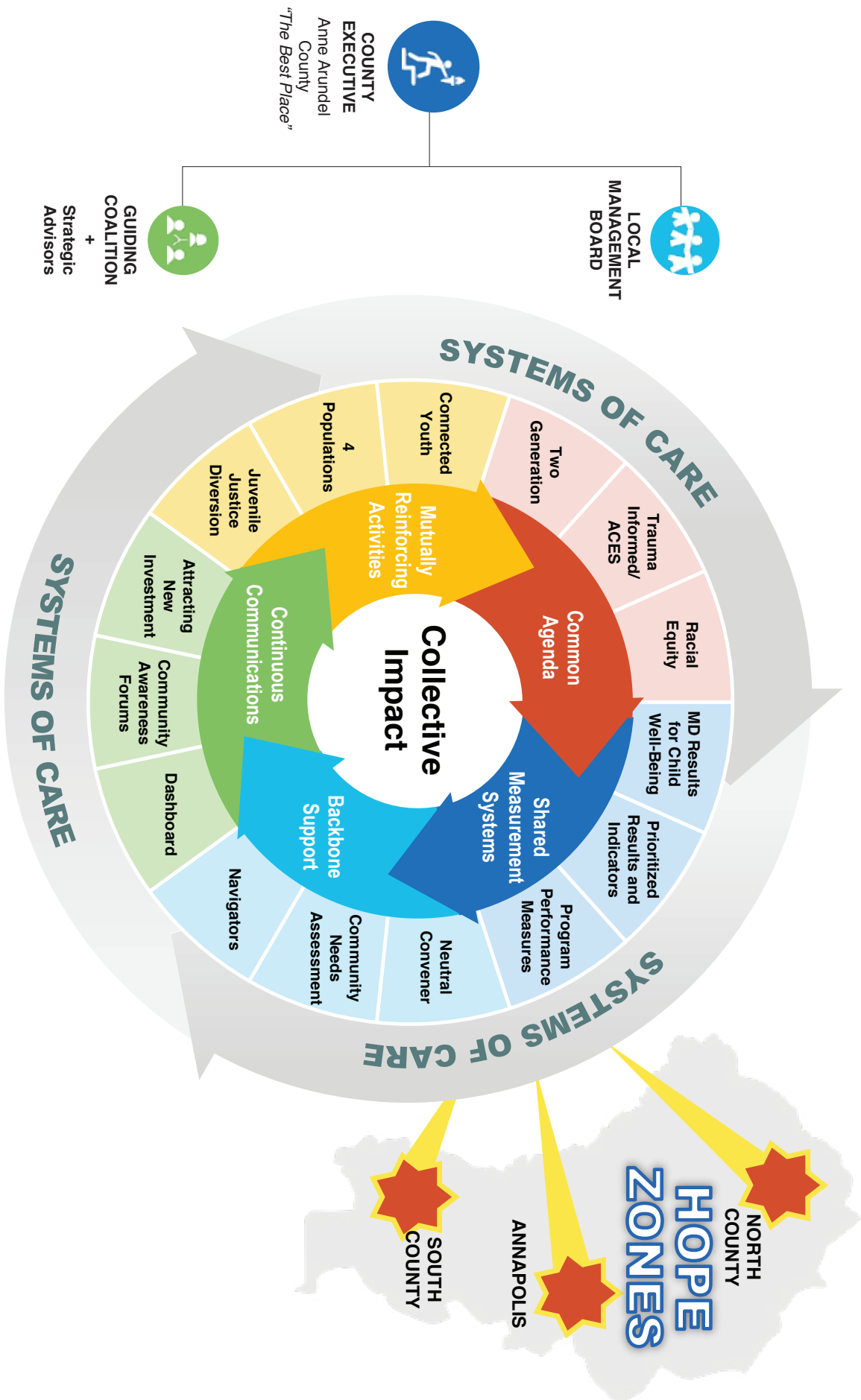


# The LENSES Through Which We View Our Work





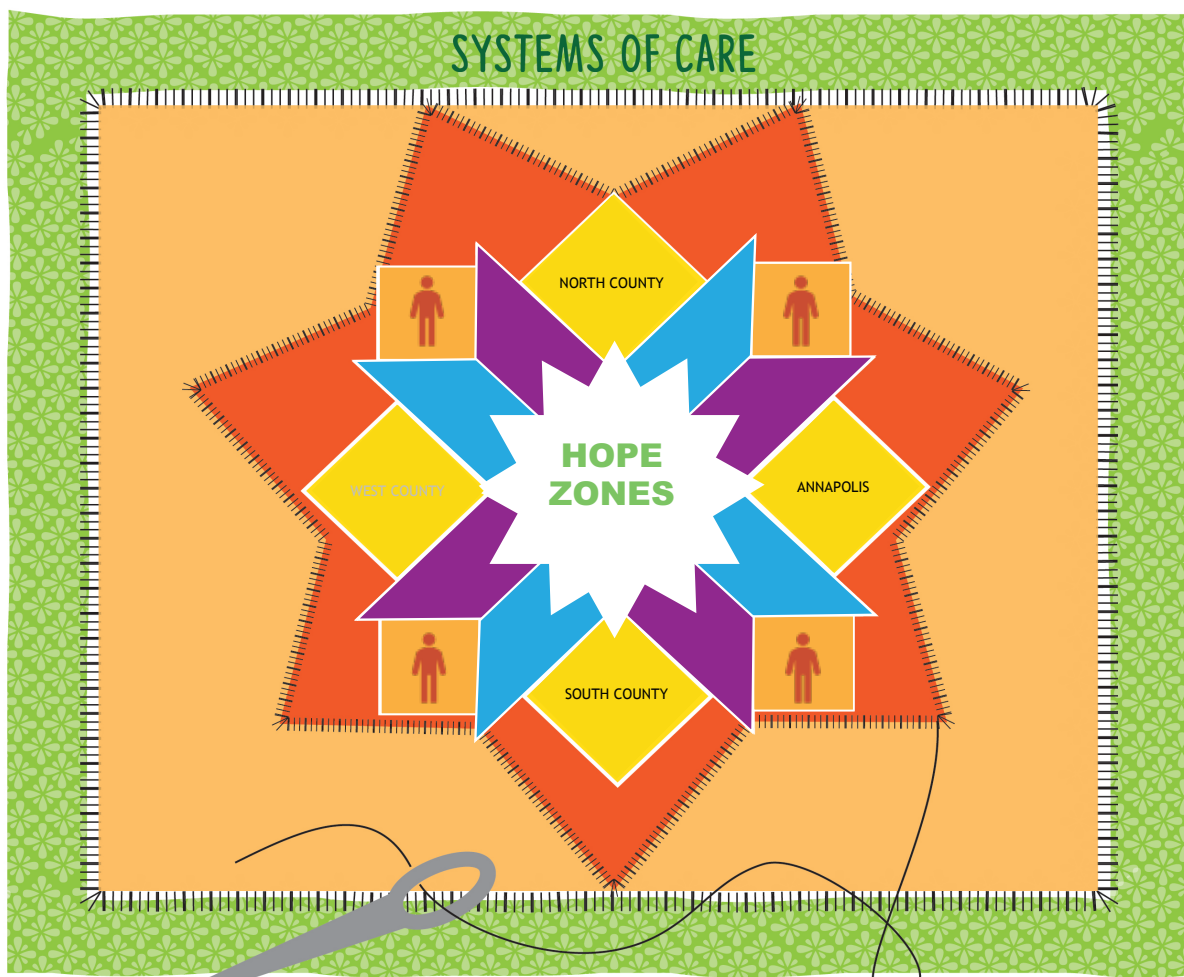
# Community Plan FY 2020



# Weaving It All Together

## SYSTEMS OF CARE WEAVE TOGETHER A COLLABORATIVE EFFORT THAT:

- Starts with basic needs
- Engages hundreds of partners including residents with lived experience through Hope Zones
- Braids, blends and leverages funding and resources
- Builds consensus through a Common Agenda, shared measurement, aligned activities and ongoing communication
- Attaches a Special Populations Navigator to each Hope Zone
- Provides backbone leadership
- Defines progress through research-informed lenses to ensure the best of what we know, guides what we do



 GOC Funded Programs

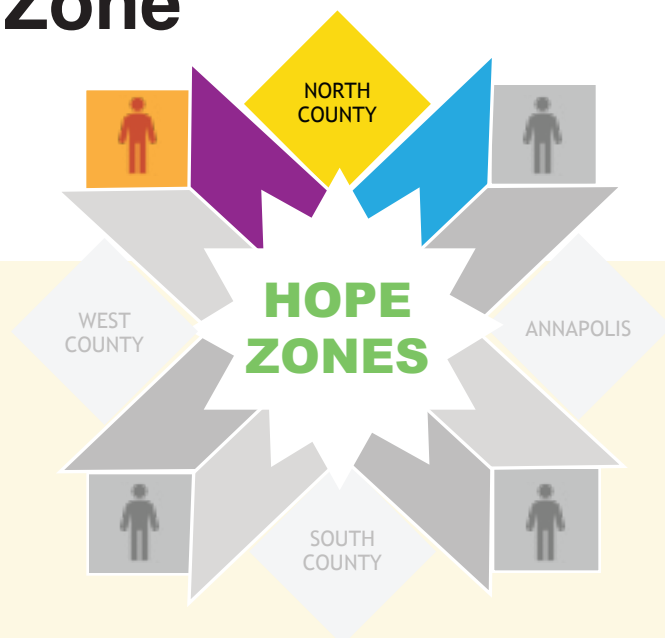
 GOC Funded Programs

# North County Hope Zone

## BROOKLYN PARK COMMUNITY OF HOPE: REDUCE URBAN POVERTY

### PARTNERS:

Anne Arundel County Workforce Development  
Naval Academy  
Anne Arundel County Department of Social Services  
United Way of Central Maryland  
Anne Arundel Community College  
Anne Arundel County Department of Health  
Anne Arundel County Public Library  
Anne Arundel County Public Schools  
Anne Arundel County Toys for Tots  
Anne Arundel Mental Health  
Anne Arundel Workforce Development  
Arundel Child Care Connections  
Arundel Community Development Services, Inc.  
Arundel Lodge  
Boys & Girls Club of Annapolis and Anne  
Arundel County  
Brooklyn Park Middle School  
Butterfly Catalyst  
Restoration Community Development Corporation  
Casey Family Services  
North County High school  
National Trauma Institute  
Art Sherrod  
Anne Arundel County Department of Recreation  
and Parks  
Anne Arundel Community College TEACH Institute  
Anne Arundel County Department of Aging and  
Disabilities  
Anne Arundel County Police Department  
Community Foundation of Anne Arundel County  
O'Neil Foundation  
Chesapeake Arts Center  
Due East Partners



Community Action Agency of Anne Arundel County  
Community Education & Health Equity  
Department of Human Resources  
Equity in Education Committee  
Family and Children's Services of Central  
Maryland  
Girl Scouts of Central Maryland Council Offices  
Greater Bay Brook Alliance  
I5 Church/Serve  
Junior League of Annapolis and Anne Arundel  
County  
Faith Based Ministries  
North County Rec and Parks  
Office of the State's Attorney  
Signature Program at North County High School  
Small Business  
The Whitehead institute  
The Y of Central Maryland  
United Way Ben Franklin Center  
University of Maryland  
Women Infant and Children Program  
Young Audiences of Maryland / Arts For Learning  
Office of Delegate Ned Carey  
BWI Thurgood Marshall Airport  
Maryland Food Bank  
Cal Ripken Foundation

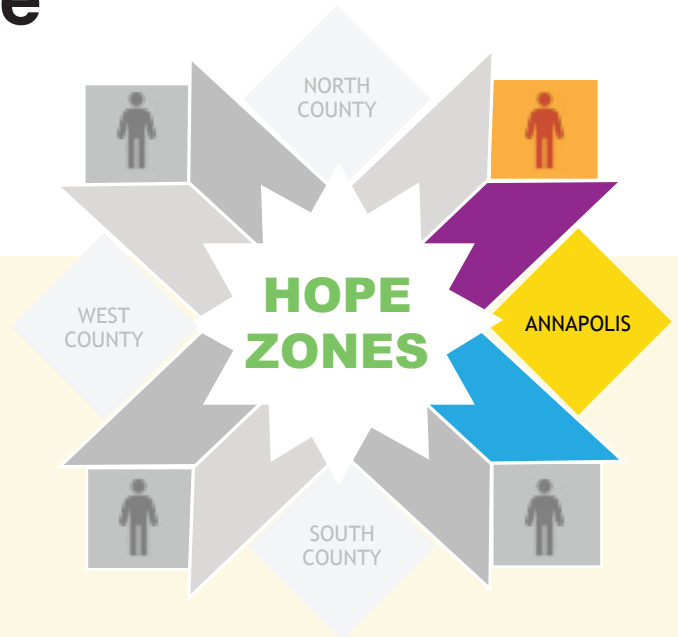


# Annapolis Hope Zone

END YOUTH AND GANG VIOLENCE

## PARTNERS:

Mayors Office  
Rhonda Pindell Charles  
Department of Juvenile Services  
Yevola Peters  
Annapolis Public Housing  
Centro de Ayuda



Housing Authority of the City of Annapolis  
Annapolis Police Department  
Anne Arundel County Police Department  
Public School System  
Arundel Lodge  
Conflict Resolution Center  
Public Safety Committee  
City Rec and Parks  
AAWDC  
OIC of Anne Arundel County  
Boys and Girls Club of Annapolis &  
Anne Arundel County  
AA County Detention Center  
DJS  
Caucus of African American Leaders



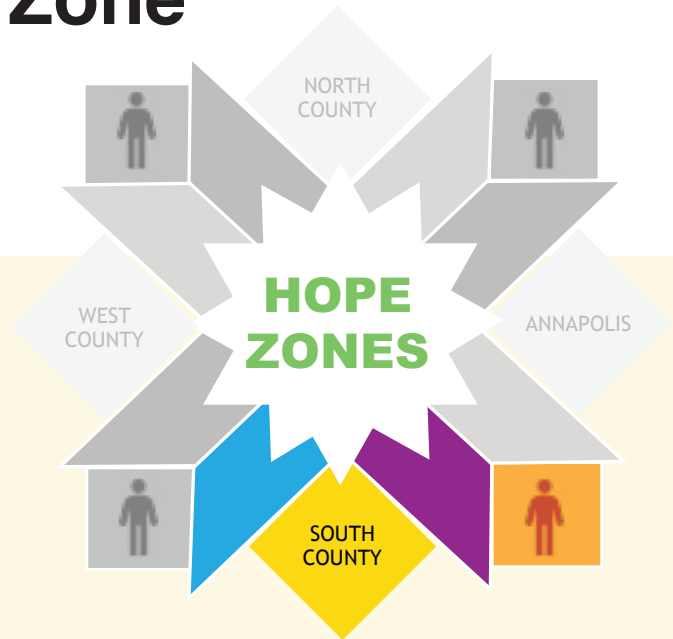


# South County Hope Zone

REDUCE RURAL POVERTY

## PARTNERS:

A.A. Co. Dept. of Transportation  
A.A. Co. Partnership for Children, Youth and Families  
A.A. Co. Public Library  
A.A. Co. Public Library Foundation  
A.A. Workforce Development Corporation  
Anne Arundel Community College  
AACC - Truxal Library  
Anne Arundel County Public Schools  
AACPS - Homeschool office  
Anne Arundel Economic Development Corp.  
Cape Anne Citizens' Association  
Cedar Grove Preschool  
Cedar Grove United Methodist Church  
Christ Episcopal Church  
Cub Scout Pack 840 - Den 1  
Deale Area Historical Society  
Deale Community Library  
Deale Elementary  
Den 1 Cub Scouts Pack 853  
Dept of Aging and Disabilities  
Franklin Manor Citizen's Association



Grace EBP  
Greenstreet Gardens  
Harbor Christian Cooperative  
Holy Family Catholic Church



# FY20-21 Programmatic Investments



Program	Result Area	Indicator	Target Population
Youth Empowerment Services (YES) - Mentoring	Children Successful in School	Truancy	Impact of Incarceration
North County Rec Teen Center	Children Successful in School	Truancy	Impact of Incarceration, Homeless Youth, Disconnected Youth
Behavioral & Emotional Support and Training (BEST) 2.0	Children Enter School Ready To Learn	Kindergarten Assessment	Impact of Incarceration, Homeless Youth, Opioids
The Peak Youth Services	Communities are Safe for Children & Families	Juvenile Recidivism	Impact of Incarceration Disconnected Youth Homeless Youth Unaccompanied Youth
Strengthening Families	Families Are Safe & Economically Stable	Child Poverty	Impact of Incarceration
Systems of Care	Families Are Safe & Economically Stable	Child Poverty	All Populations
Power of One Homeless Youth Mentoring Program	Families Are Safe & Economically Stable	Youth Homelessness	Homeless Youth
JIFI Program - Mentoring	Families Are Safe & Economically Stable	Youth in School/Working	Disconnected Youth, Homeless Youth, Impact of Incarceration
Community of Hope	Youth Have Opportunities for Career Readiness/ Employment	Child Poverty	All Populations



You may also feel free to contact our Systems of Care “Navigators”  
with questions or referrals related to our target populations:

CALL SYSTEMS OF CARE AT  
1-800-485-0041

**Annapolis Hope Zone**

Shay Brooks  
410-222-7591  
srbroo99@aacounty.org

**North County Hope Zone**

Gwendolyn Branch  
410-222-7527  
srbran99@aacounty.org

**South County Hope Zone**

Gabby McCrary  
410-222-7505  
srmccr99@aacounty.org

---

If you have information on  
resources or services available  
in Annapolis, please contact:

**Twila Mohammed-Davis**  
Special Projects Coordinator  
SRMoha33@aacounty.org

If you have information on resources  
or services available in Brooklyn Park -  
Community of Hope, please contact:

**Mizetta Wilson**  
410-222-7264  
srwils00@aacounty.org



ANNE  
ARUNDEL  
COUNTY

M A R Y L A N D

Partnership for Children, Youth & Families

For more information on the Partnership or our Community Plan, please contact:

**Pam Brown**  
Executive Director  
SRBrow00@aacounty.org  
P: 410-222-7652

**Alli Holstrom**  
Compliance Manager  
& ETO Systems Administrator  
SRHols44@aacounty.org  
P:410-222-7598