

# South Shore Trail Phase 1

## Public Pre-Construction Information Meeting

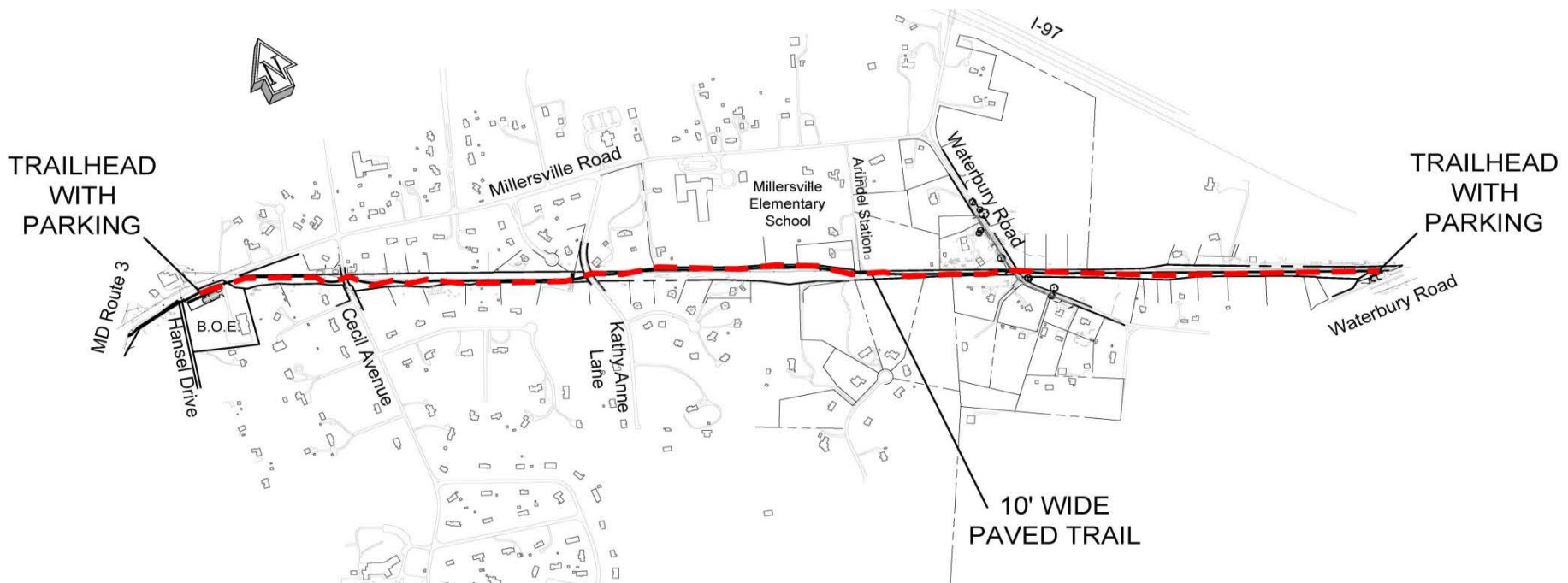
October 17, 2017

Anne Arundel County  
Department of Public Works



# Project Limits

- Hansel Drive to Waterbury Road
- Anne Arundel County-owned R/W (formerly abandoned railroad r/w)



Anne Arundel County  
Department of Public Works



# Project Overview

## Features:

- 10' wide paved trail
- approximately 1.8 miles long
- East Trailhead with parking at Board of Education property
- West Trailhead with parking at Waterbury Road
- Retaining walls at various locations along the trail

## Impacts:

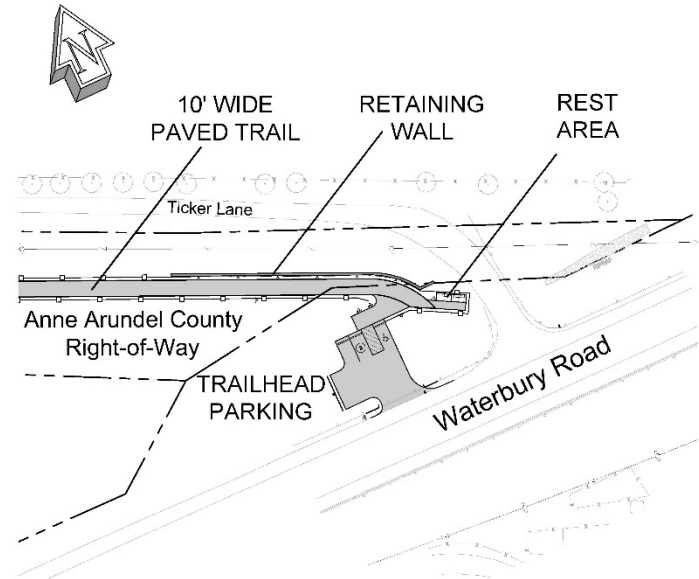
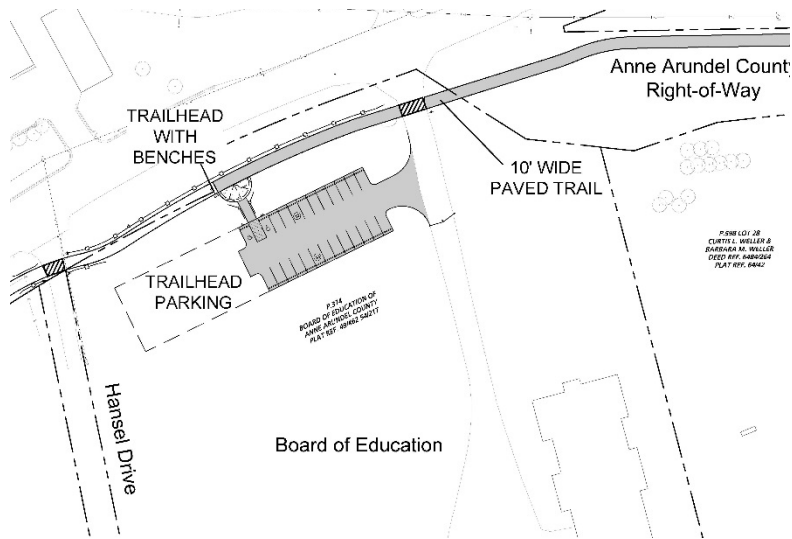
- Trail Crossings at Cecil Avenue, Kathy Anne Lane and Waterbury Road
- Roadway improvements at Waterbury Road - safety and sight distance improvements



# Trailheads with Parking

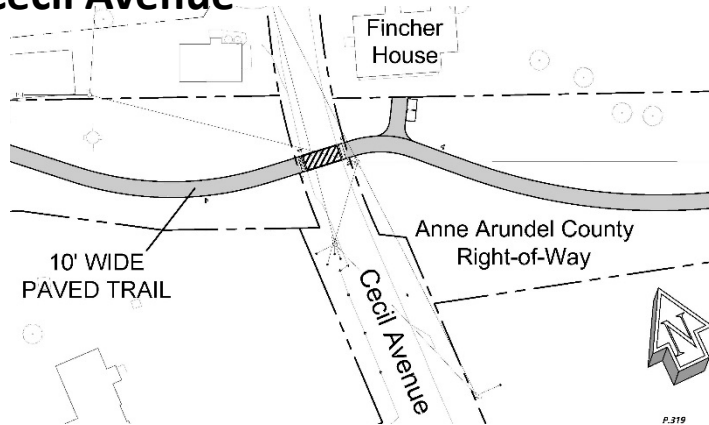
West

East

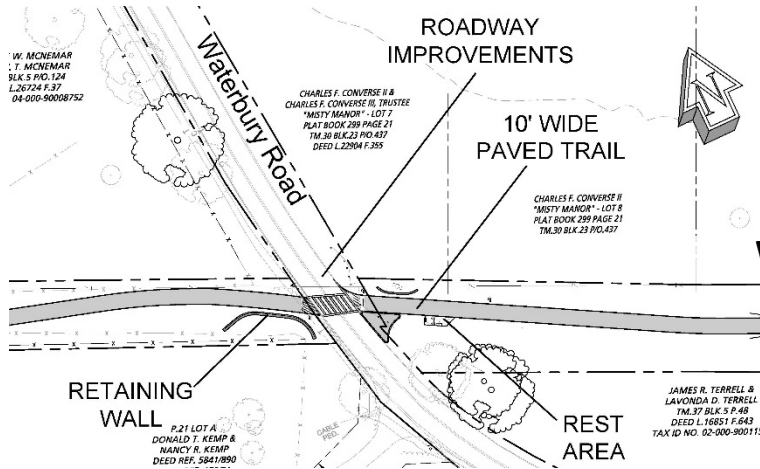
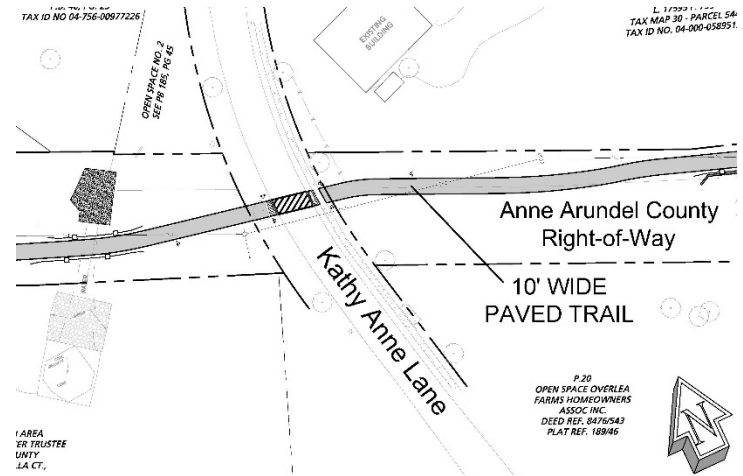


# Intersection Crossings

## Cecil Avenue



## Kathy Anne Lane



## Waterbury Road

Anne Arundel County  
Department of Public Works



# Milestone Dates and Duration

- Start of Construction – October 2017
- Anticipated Construction Duration – 270 days
- Waterbury Road improvements – Spring 2018
- Anticipated Completion - October 2018



# Contacts

- Anne Arundel County Department of Public Works:

*Project Manager: Joan Viennas*

410-222-4126

- Designers:

*Human & Rohde, Inc., Landscape Architects: John Rohde*

*Bay Engineering, Inc., Civil Engineers: Terry Schuman*

- Construction Management and Inspection:

*Century Engineering, Inc., Construction Manager: Richard Talbot 410-371-1393*

*Century Engineering, Inc., Inspector: Henry Oswiecimka*

- Contractor:

*M.T. Laney Company, Inc., Project Manager: Dan Trumpower*

Anne Arundel County  
Department of Public Works



# Questions ?

