

B&A Trail Ranger Station Preconstruction Public Meeting on Contract P564903

Presented by:

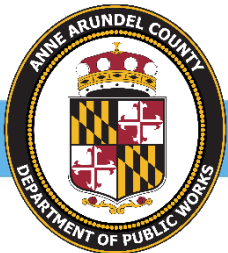
Anne Arundel County Department of Recreation and Parks
with the Department of Public Works

April 2, 2019



Project Team

- Public Works: Project Manager Alejandro Anvari
- Rec & Parks: Program Specialist Dawn Thomas
Trails Superintendent Adam Smith
- Design Team: Lee Lenhert, AECOM and
John Brunnett, GBA
- Contractor: Project Manager Butch Sain
A&S Unlimited Construction
- CM/I: Jim Wilson and Aaron Jones, KCI



AECOM

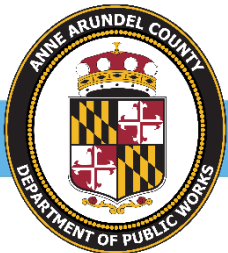


A & S Unlimited Construction



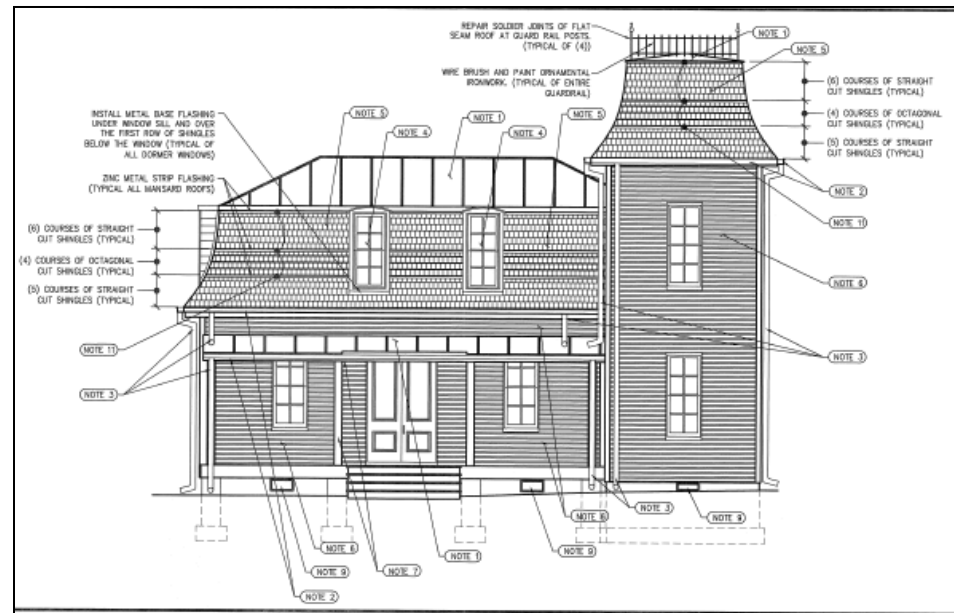
Timeline & Milestones

- Notice to Proceed: April 3, 2019
- Construction begins: April 15, 2019
- Construction duration: 180 calendar days
- Anticipated completion: November 2019



Scope of Work

- Rehabilitation of the historic Earleigh Heights Ranger Station
- Upgrade the public restrooms
- Provide functional office/maintenance area for rangers
- Finish with a functional interpretive exhibit space



What to Expect During Construction

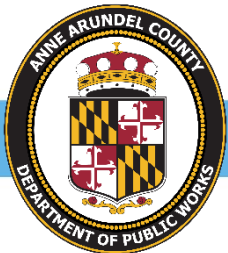
- Ranger station, restrooms, & contiguous parking lot at 51 Earleigh Heights Rd W will be fenced off from public access
- B&A Trail will remain open
- Parking across West Earleigh Heights Road will remain open.
- Portable restrooms will be available for the public at other parking lot at 56 Earleigh Heights Rd W.



Who to Contact

- Alejandro Anvari, Program Manager
Anne Arundel County, DPW, Bureau of Engineering
2662 Riva Road, MS 7301, Annapolis, MD 21401
Email: aanvari@aacounty.org Office: (410)222-7556
- Dawn Thomas, Program Specialist
Anne Arundel County, Department of Recreation and Parks
1 Harry S. Truman Parkway, Annapolis, MD 21401
Email: rpthom00@aacounty.org Office: (410)222-2867

Questions?





Bureau of Utility Operations

24-Hour Emergency Water Services: (410) 222-8400
Billing Inquiries: (410) 222-1144



Bureau of Highways

Northern District: (410) 222-6120
Central District: (410) 222-7940
Southern District: (410) 222-1933
Traffic Lights/Signs: (410) 222-1940



Bureau of Waste Management Services

Bulk Trash Service/Curbside Collections: (410) 222-6100



Bureau of Engineering

General Inquiries: (410) 222-7500



www.facebook.com/annearundeldpw



[@AACoDPW](https://twitter.com/AACoDPW)

