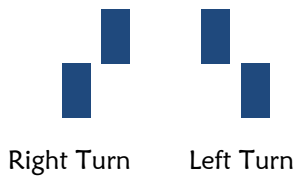



**Deep Pond**  
 Mayo, MD 21037  
 38.882900, -76.501747

## Beverly Triton Beach Park

### Trail System



**Heritage Trail:** *1.25 miles.* This trail travels from forest to beach to pond and spans the length of the park.

**Beach Trail:** *.34 miles.* A short trail with several benches overlooking the shores of the Chesapeake Bay.

**Trident Trail:** *.55 miles.* A flat, easy hike from parking lot to bay and back.

**Pond Trail:** *1.87 miles.* This trail travels the perimeter of deep pond, with view of a tidal wetland. Slightly hilly.

**Service Road:** Used for access to various sections of the park.