

# Anne Arundel County Transit Development Plan

Public Meeting | February 27, 2024



Anne Arundel County Seal



# Meeting Overview



## Anne Arundel County Transit Development Plan

Draft Final Plan – January 2024

- Provide background on the planning process
- Review current services and conditions
- Review some highlights from community outreach efforts
- Discuss proposed service improvements
- Obtain your thoughts



**KFH**  
GROUP

**KFH Group, Inc.**  
Bethesda, MD | Austin, TX



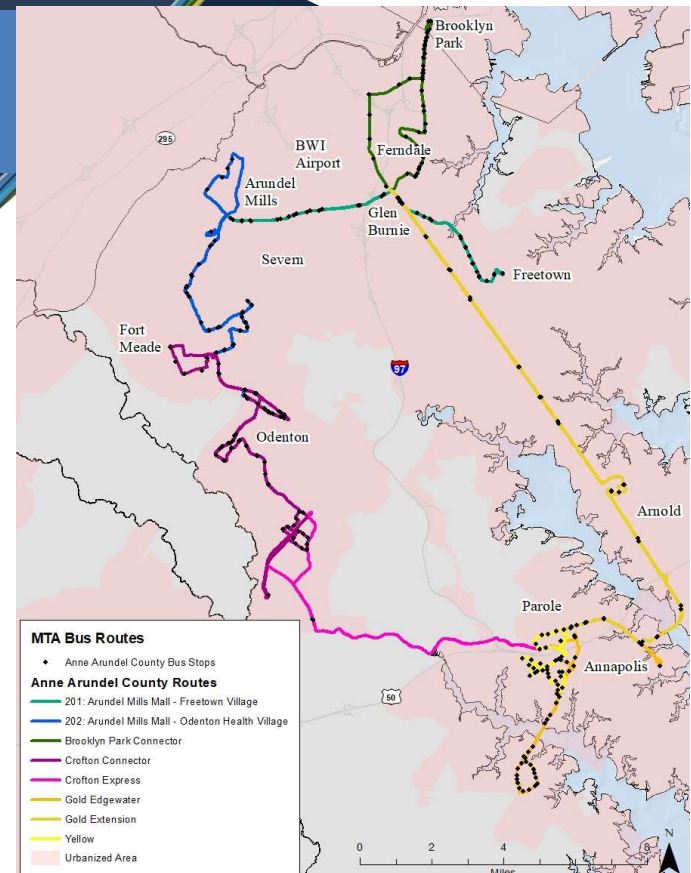
# Transit Development Plan

- Formulates Anne Arundel County's goals and objectives for transit
- Reviews and assesses current services and identifies unmet needs
- Develops an appropriate short-range course of action
- Completed plan serves as a guide for implementing service changes, improvements, or expansions
- MDOT MTA requires locally operated transit systems to complete, and use as the basis for their annual grant application
- Component plan of County Transportation Master Plan: Move Anne Arundel!

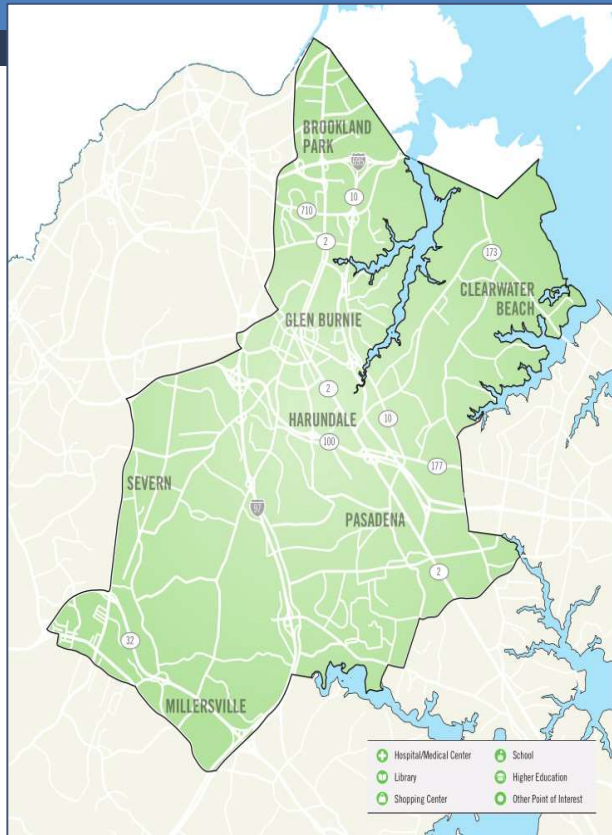


# Current Service Overview

- Fixed Routes
- North County / South County Call N'Ride Services
- ADA Complementary Paratransit
- General Paratransit Services
  
- All services are fare-free

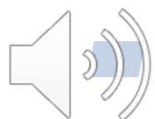


# Call N'Ride Services

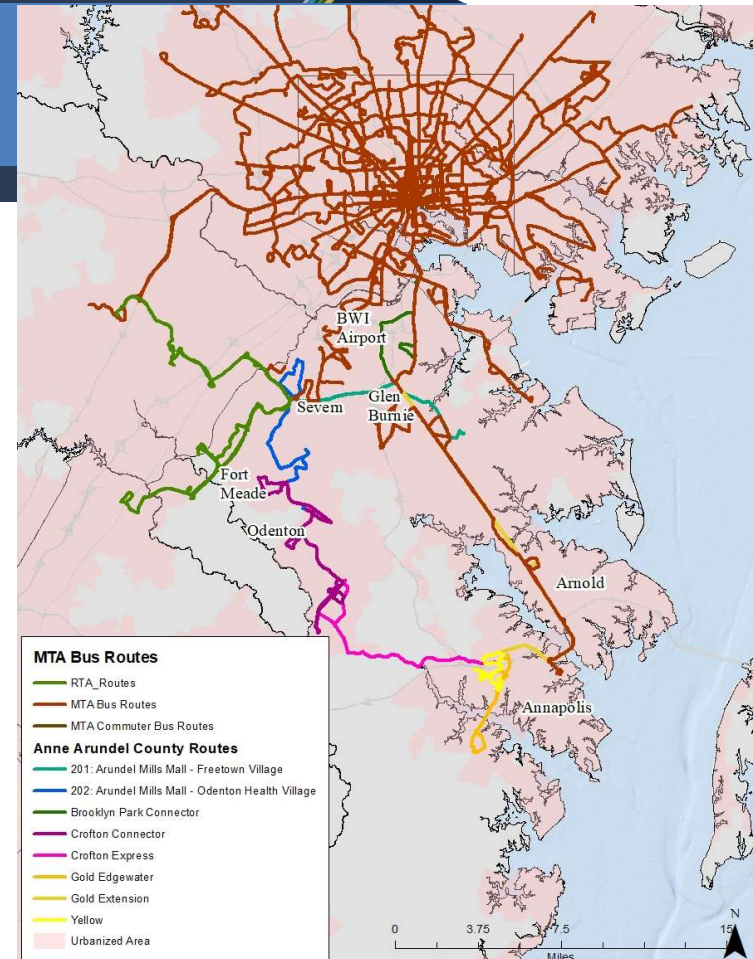


# Regional Service Overview

- MDOT MTA
- RTA
- Annapolis Transit
- County Connector
- Department of Aging and Disabilities
- Private and Non-Profit Providers



Ridesharing



## Technology Updates



- Passio Go!- Allows riders to see buses in real-time and provides updates on delays and schedule changes.



- Pingo - Allows riders to schedule trips with our Call N' Ride service ahead of time.



- Transit App - Links our fixed route services with MTA, DC, and Annapolis.



# Approved Capital Projects

- Parole Transportation Center: \$17.2 million
- Odenton MARC Garage: \$35.6 million
- Transportation Operations Facility: \$6.98 million
- Arundel Mills Bus Shelter Enhancements: \$1.8 million





# Needs Assessment

- Community Survey
- Customer (Rider) Survey
- Stakeholder and Staff Input
- Demographic Analysis
- Review of Previous and Current Plans and Studies

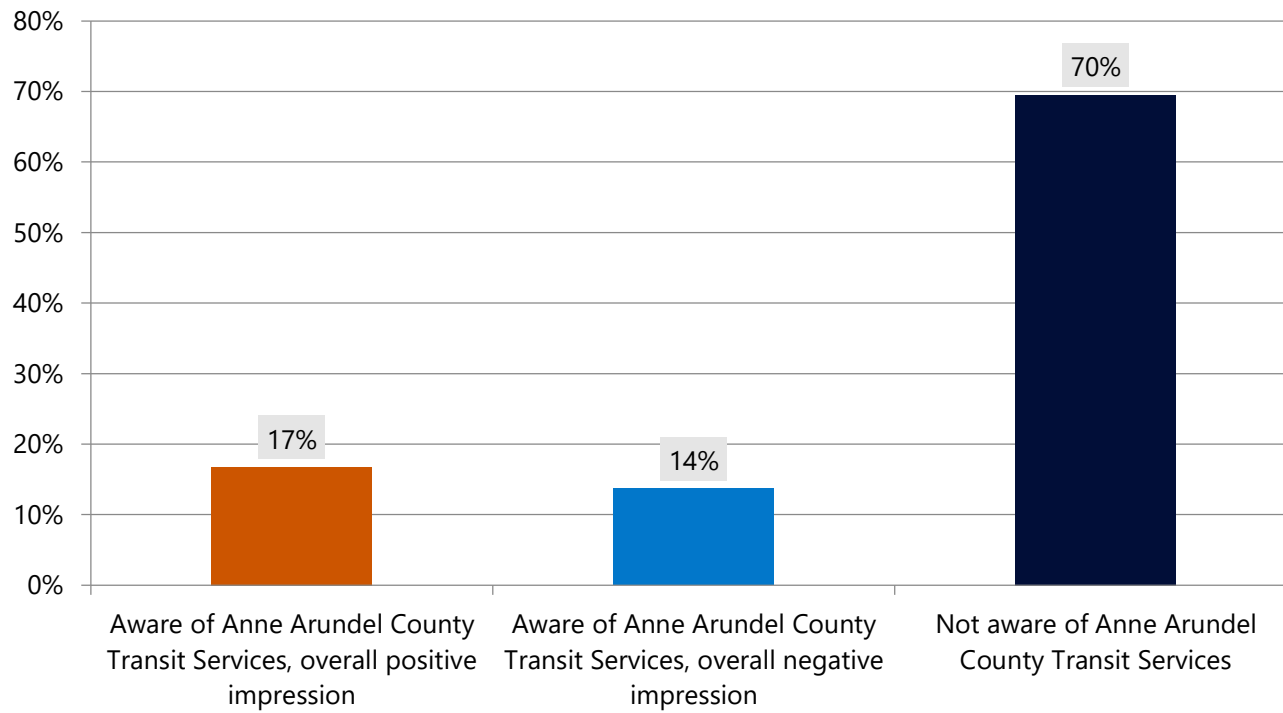


# Community Survey Results

- Received 936 responses
- 93% reported that a car was their primary mode of transportation, only 1.2% noted public transportation as their primary travel mode
- 7% reported use of public transportation services
- Frequent public transit users:
  - MDOT MTA Local Bus: 20.7%
  - MARC Train: 13.3%
  - MDOT MTA Commuter Bus: 9.5%
  - RTA: 8.7%
  - AA County Transit: 8.6%



# Awareness of Anne Arundel County Transit Services



## Factors That Would Encourage Public Transportation Use

Service near my home	66%
Improved information on available services	44%
More frequent service	32%
Better sidewalk infrastructure to access transit stops and stations	30%
Shorter wait/pickup time	30%
On-demand service similar to Uber/Lyft in my neighborhood	28%
More reliable service	25%
Longer hours of service	17%
Fewer transfers	16%
Shorter travel time	16%

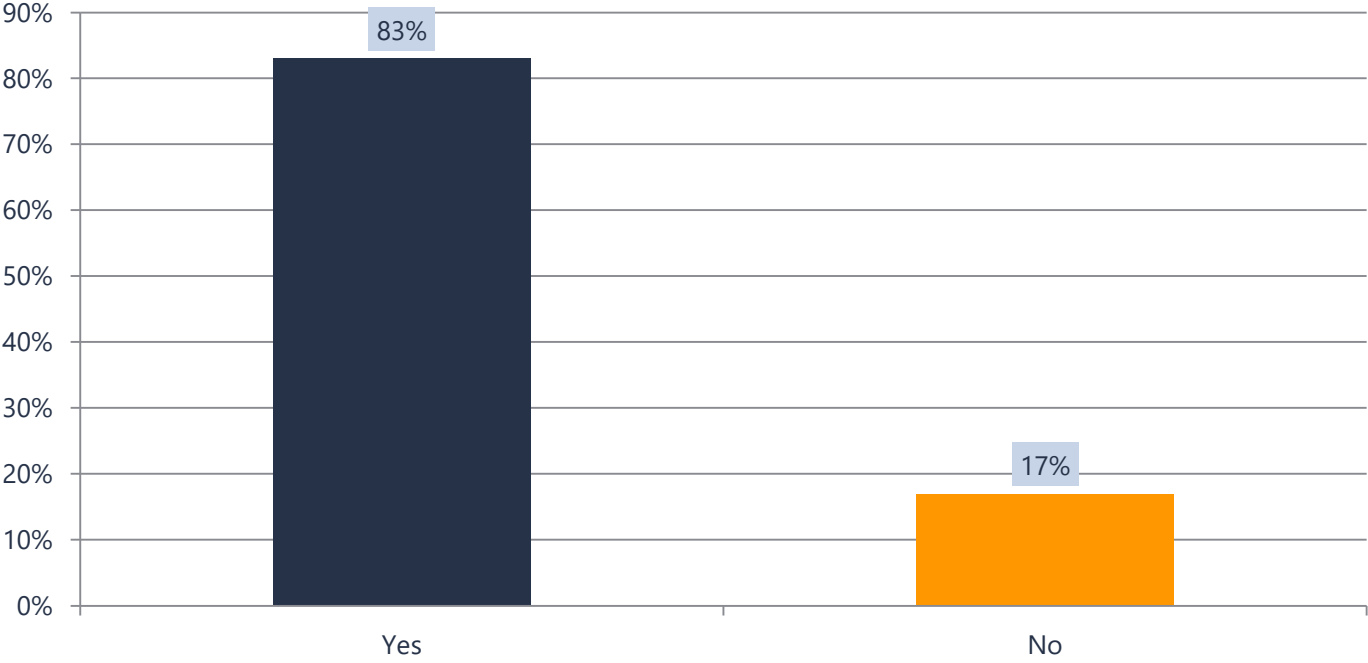


## Needed Improvements

New service that would connect communities or key destinations	67%
Local service within my community	41%
Expanded transportation services designed for older adults and people with disabilities	28%
New or expanded service that would provide access to a MARC station.	23%
Expanded service on current routes.	19%



# Need for Additional or Improved Public Transportation in Anne Arundel County?



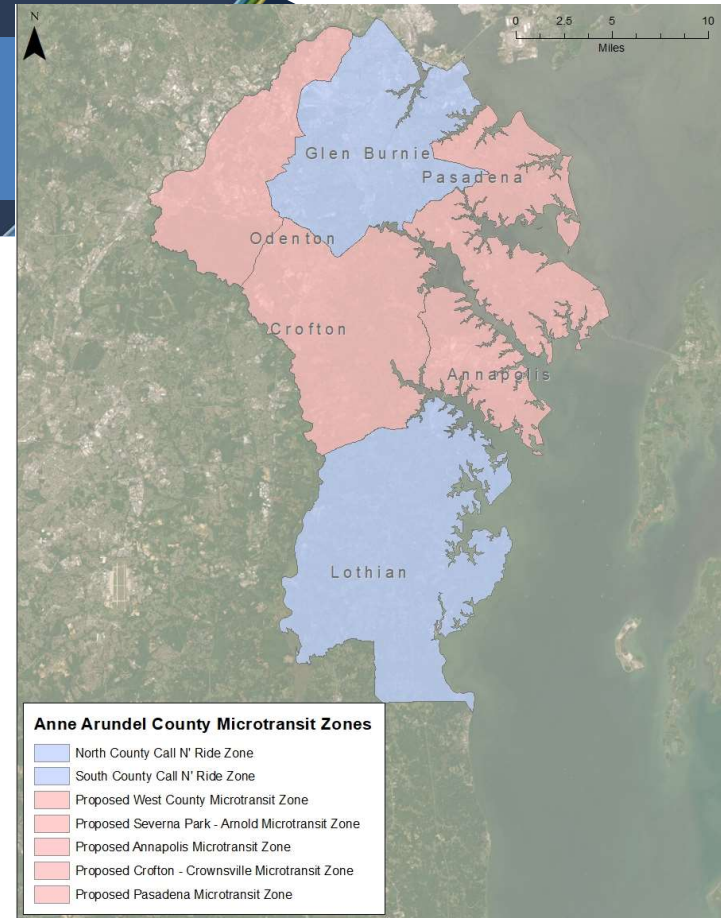
# Proposed Service Plan

- Expanded On-Demand Services
- New Fixed Route Service
- Expanded Regional Services
- Ongoing Review of Current Routes for Consideration of Increased Frequency
- Coordination with Regional Transit Partners



# Proposed On-Demand Microtransit Service

- Real-time service that uses dynamic routing and scheduling
- Trips primarily requested via smartphone/app
- Features:
  - ▷ Smaller vehicles
  - ▷ Geofenced service area
  - ▷ First mile/last mile connections with existing transportation services





# Potential Short-Term improvements

## Year 1

### ■ West County On-Demand Service

- ▶ Jessup and Hanover

### ■ Annapolis /Parole On-Demand Service

## Year 2

### ■ Severna Park/Arnold On-Demand Service

### ■ Pasadena On-Demand Service

Proposed Operating Hours  
for On-Demand Services:  
Monday -Saturday:  
7:00 a.m. - 7:00 p.m.



## Potential Mid-Term improvements

### Year 3

- Crofton/Crownsville On-Demand Service
- Anne Arundel Community College/Severna Park – Fort Meade/NSA Route

### Year 4

- Laurel – NSA/Fort Meade Service
- Crofton-Bowie Service
- Annapolis – Arundel Mills/BWI Airport
- Crofton – Cromwell Light Rail



## Potential Long-Term improvements

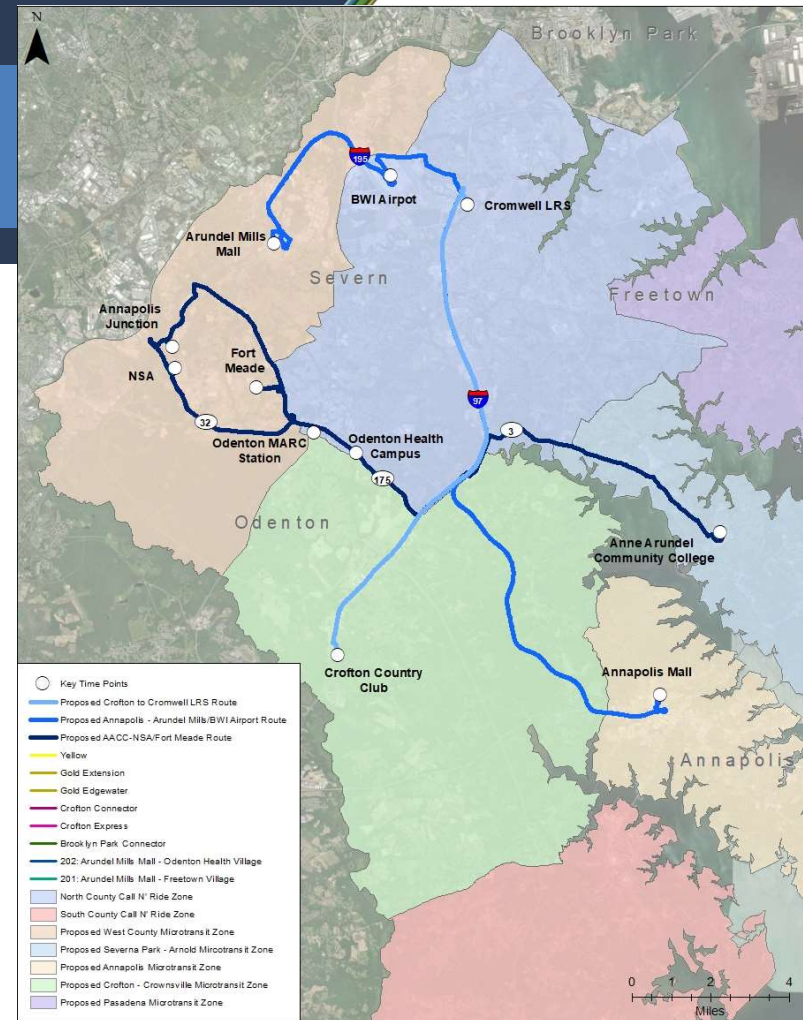
### Year 5 and Beyond

- Parole – New Carrollton Express Service
- I-97 Express: Cromwell Light Rail – Parole Transportation Center
- Pasadena – NSA
- Glen Burnie – Fort Meade



# Potential Future Network

- On-Demand Services – Existing and Planned
- New County Routes
- Note: Does not show potential regional services



# Conceptual Financial Plan\*

Proposed Operating Requests	Projected Year				
	1	2	3	4	5
<b>Proposed Future Projects</b>					
<b>Baseline Operating Cost with Inflation</b>	\$15,077,120	\$15,830,976	\$16,622,525	\$17,453,651	\$18,326,334
<b>Year 1</b>					
West County On-Demand	\$575,770	\$604,559	\$634,786	\$666,526	\$699,852
Annapolis/Parole On-Demand	\$415,120	\$435,876	\$457,670	\$480,553	\$504,581
<b>Year 2</b>					
Severna Park/Arnold On-Demand		\$596,461	\$626,284	\$657,598	\$690,478
Pasadena On-Demand		\$738,904	\$775,849	\$814,642	\$855,374
<b>Year 3</b>					
Crofton/Crownsville On-Demand			\$770,812	\$809,352	\$849,820
AACC/Severna Park - Fort Meade/NSA			\$956,430	\$1,004,251	\$1,054,464
<b>Year 4</b>					
Laurel - NSA/Fort Meade (Possible RTA Service)				\$872,977	\$916,625
Crofton - Bowie (Possible RTA Service)				\$669,501	\$702,976
Annapolis – Arundel Mills/BWI Airport				\$1,651,435	\$1,734,007
Crofton – Cromwell Light Rail				\$1,218,083	\$1,278,987
<b>Year 5</b>					
Parole - New Carrollton Express (Possible MDOT MTA Service)					\$627,165
I-97 Express Bus					\$632,142
Pasadena – NSA					\$632,142
Glen Burnie – Fort Meade					\$632,142
<b>Total Proposed Operating Expenses</b>	<b>\$16,068,010</b>	<b>\$18,206,775</b>	<b>\$20,844,356</b>	<b>\$26,298,569</b>	<b>\$30,137,089</b>
<b>Anticipated Funding Sources for Operating</b>					
<b>Federal/State</b>	\$7,798,635	\$8,836,689	\$10,116,842	\$12,764,054	\$14,627,086
<b>Local</b>	\$8,269,375	\$9,370,087	\$10,727,513	\$13,534,515	\$15,510,003
<b>Total Proposed Operating Revenues</b>	<b>\$16,068,010</b>	<b>\$18,206,775</b>	<b>\$20,844,356</b>	<b>\$26,298,569</b>	<b>\$30,137,089</b>

\* Updated since distribution of the draft plan; will be incorporated into final plan.



## Next Steps

- <https://www.aacounty.org/transportation/transit/transit-development-plan>
- Presentation will be posted by March 4th
- Comment period closes March 12th
- PAB Presentation in March
- County Council Presentation in April



# Contact Information

DD0

- Andrew Diehl
  - ▶ Transit Innovation Planner
  - ▶ 410-222-7440
- [transportation@aacps.org](mailto:transportation@aacps.org)



## Slide 23

---

**DD0**

To be added -- Sam, Brian, Andy, KFH, as primary contact?

Dan Dalton, 2024-02-15T23:03:50.238