

Anne Arundel County  
**DPW & YOU**

*Making a difference, together*

# Peninsula Park Expansion

1005 Bay Ridge Road, Annapolis, MD 21403

Project Number P509000

Contract Number P509006

Pre-Construction Community Meeting  
Blue Heron Center, Quiet Waters Park

November 9, 2023  
6:00 pm to 7:30 pm



[DPWandYOU.com](http://DPWandYOU.com) | *Making a difference, together*

## Important Meeting Information

Tonight's meeting will be audio recorded

- All questions will be answered at the end of the presentation



DPWandYOU.com | *Making a difference, together*



## Meeting Agenda

- Welcome - Anthony Ricottilli, Project Manager, DPW
- Introductions
- Project Goals
- Schedule and Duration
- Questions



## Introduction - Project Team

Anthony Ricottilli  
Project Manager  
Department of Public Works  
[pwrico23@aacounty.org](mailto:pwrico23@aacounty.org)  
667-204-8673 (cell)

Bruce Bruchey  
Chief Planning and Construction  
Department of Recreation and Parks

Design Consultant: AECOM  
Dominic Taglione, PE, Design Engineer

Contractor:  
Urban N Zink Contractor, Inc.

Construction Manager:  
BayLand Consultants & Designers, Inc.  
Rick Pugh  
[rpugh@baylandinc.com](mailto:rpugh@baylandinc.com)



DPWandYOU.com | *Making a difference, together*



## Project Goals

- Peninsula Park, also called Peninsula Athletic League (PAL) Park, is being expanded to include two reconfigured baseball fields, a multi-purpose field, trails, lighting, ADA, site amenities and a parking lot.
- Includes signage, fencing, ball stopper netting, drainage conveyance systems, stormwater management and landscaping.
- Provides sediment and erosion control and permanent turf stabilization.
- Total park acreage- 30.14 acres. Area of construction work- 8.03 acres.



## Peninsula Park Background

- Park is open from dawn to dusk
- Baseball Fields (5)
- Basketball Courts
- Multi-Purpose Field
- Football Field
- Pickleball Court
- Rebound Court
- Restrooms
- Picnic Area
- Playground
- Tennis Courts
- Trails- Paved and natural



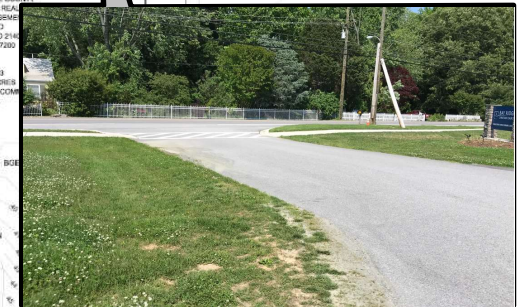
# Existing Park Conditions



# Existing Conditions



Existing Fields 4 and 5

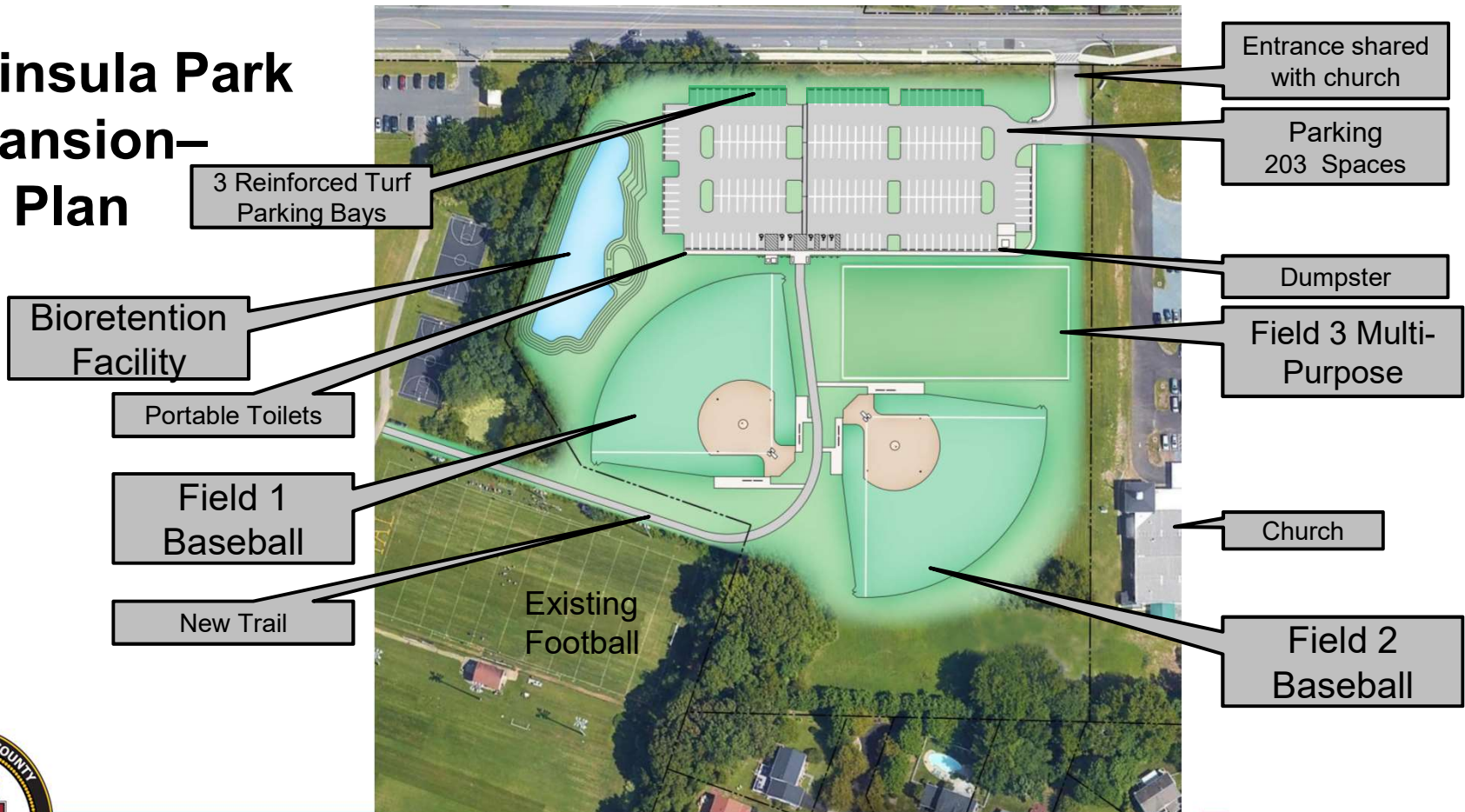


Existing Shared Entrance

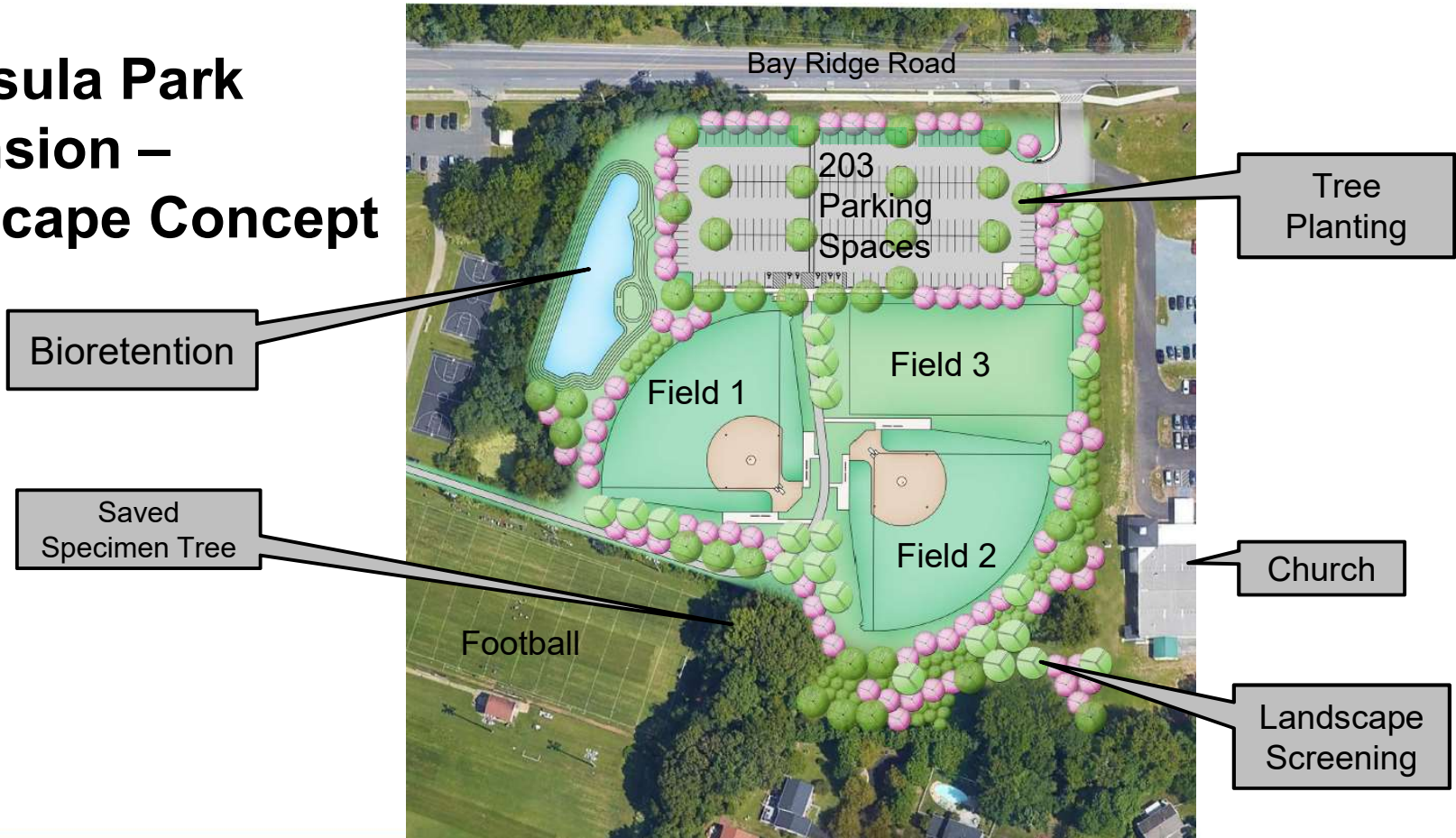




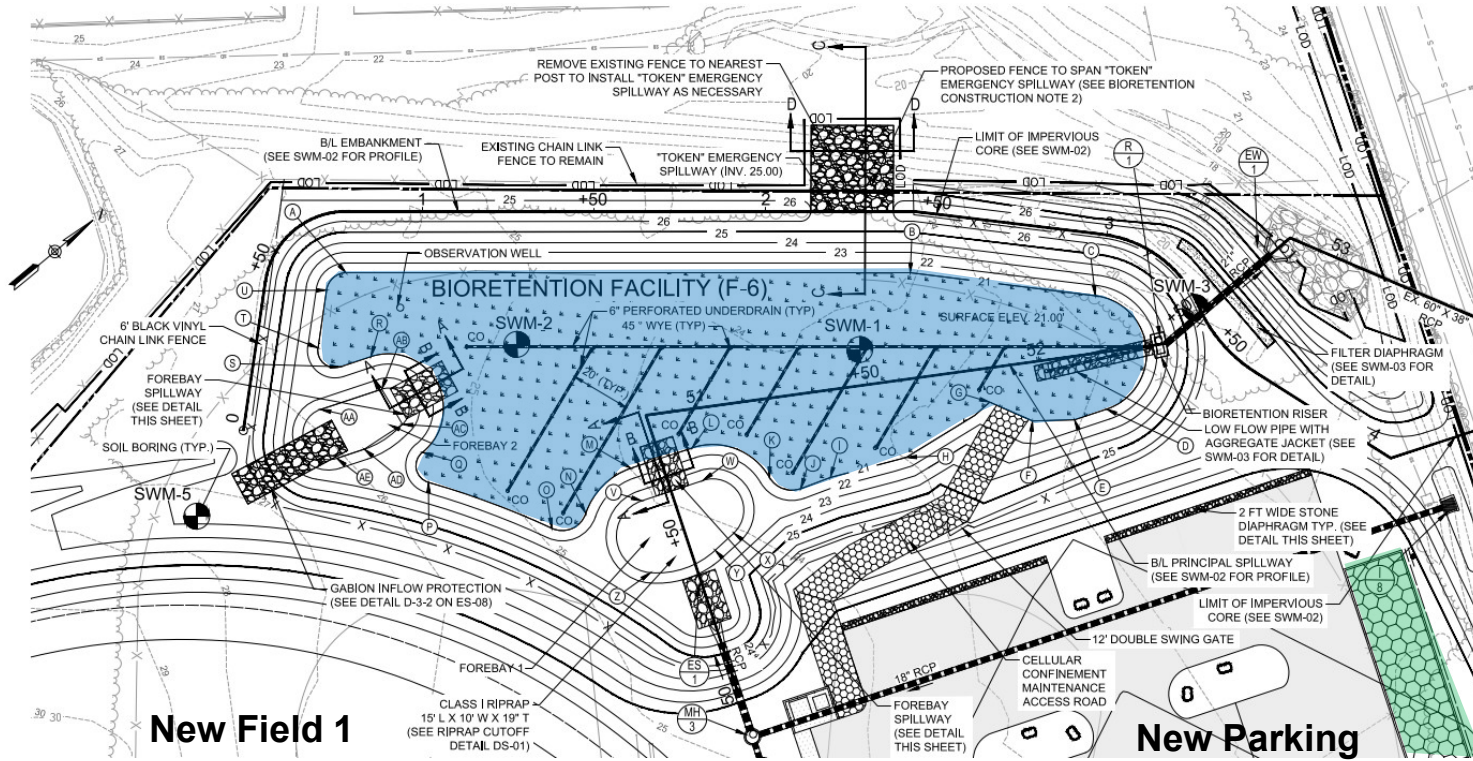
# Peninsula Park Expansion— Site Plan



# Peninsula Park Expansion – Landscape Concept



# Bioretention Facility



## Next Steps

- Grading Permit G02019203 issued
- Project previously Advertised for Construction
- Contractor selected
- Begin construction



## Project Schedule and Duration

- Typical Working Hours: Monday – Friday 7 AM to 5 PM
- Project Start Date: TBD
- Anticipated Completion: TBD
- Check webpage for periodic updates:  
<https://www.aacounty.org/recreation-parks/capital-projects/peninsula-park>





Thank you for your interest in the Peninsula Park Expansion Project.

## Questions?



[DPWandYOU.com](http://DPWandYOU.com) | *Making a difference, together*



# Contact information

Anthony Ricottilli, Project Manager, DPW

[pwrico23@aacounty.org](mailto:pwrico23@aacounty.org)

667-204-8673 (cell)



DPWandYOU.com | *Making a difference, together*





### Bureau of Utility Operations

**24-Hour Emergency**  
**Water Service:** (410) 222-8400  
**Billing Inquiries:** (410) 222-1144



### Bureau of Waste Management Services

**Bulk Trash Service / Curbside Collections:** (410) 222-6100



### Bureau of Highways

**General Inquiries:** (410) 222-7321  
**Snow Line:** (410) 222-4040  
**Email:** hwyscustomercare@aacounty.org



### Bureau of Engineering

**General Inquiries:** (410) 222-7500



### Bureau of Watershed Protection and Restoration

**General Inquiries:** (410) 222-1072

### Customer Relations:

(410) 222-7582

