

Public Information Exhibit

Your support is requested to improve this rest stop. Selective minor pruning of pine limbs, 1 poor condition pine tree and 2 intruding oak leaf hydrangeas need removal. They are indicated with this star in circle symbol. (★)

The County has been awarded a grant and matching funds are provided by the Friends of AA Trails with local business partners.

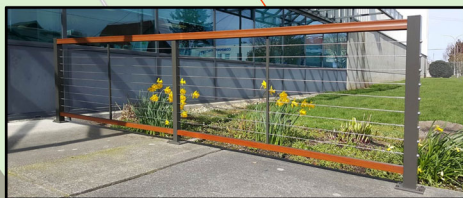
The trail will remain open during construction with the potential for partial lane closures intermittently.



Plaza: each 10'x10' square=1 table
Furniture:
9 existing tables, 44"
2 additional tables
Seating needs 36"-42"
Decorative safety barrier/fence
Connectors: to rest area, businesses
Landscaping, potted plants



Bike Racks



Decorative Fencing Example for Safety

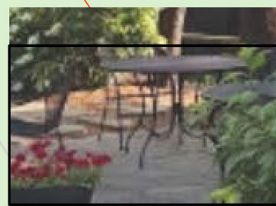
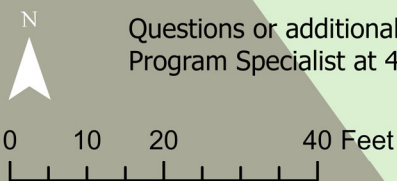


Table with Chairs

- Stair, Crepes
- Stair, Bean
- Stair, Froyo
- Landing, ramp
- Ramp
- Tree/Bush/Util Pole
- Safety Barrier/Fence
- Connectors, accessible
- Connectors, rustic
- Plaza-10'x10'ea
- Parks
- Building
- Driveway
- Parking Area
- Trail
- Patio
- Road
- Sidewalk
- Parcels



Questions or additional information available by contacting Dawn Thomas, Program Specialist at 410-222-2867 or rpthom00@aacounty.org.



Made possible by the Recreational Trails Program and Maryland State Highway Administration, in partnership with the County and Friends of AA Trails.