

Provide existing top of stake elevation directly onto the marker

Protective cap required (see detail)

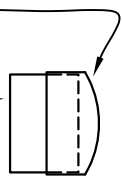
1 1/2" Dia. SCH40 PVC cap

1' indicator mark (see detail)

6" indicator mark (see detail)

3'-6" Min.

1 1/2" to 2" of 1 1/2" Dia. SCH40 PVC pipe or as per manufacturers' recommendations



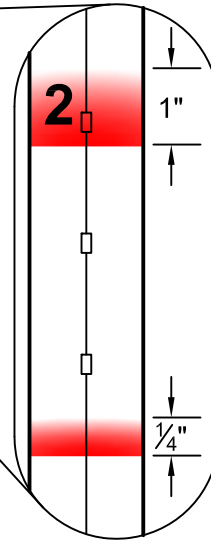
CAP DETAIL NOT TO SCALE

Label and mark 1' increments with a 1" wide band of highly visible color paint

Mark 6" increments with a 1/4" wide band of highly visible color paint

Provide existing ground elevation directly onto marker

2'-6" Min. Depth



NOTE: Stake to be placed at the center of all receiving channels as directed by AASCD

Steel post shall be studded or punched "T" shaped with anchor plates, with a minimum weight of 1.25 pounds per foot. Post shall be clean of loose scale with one or more coats of weather resistant paint applied.

SEDIMENT CONTROL MONITORING DEVICE DETAIL NOT TO SCALE