

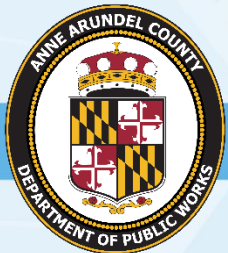
WB&A Trail Bridge at Patuxent

Pre-Construction Community Meeting

April 5, 2022

6:30 PM

Virtual Meeting



Important Meeting Information

- Tonight's meeting will be audio and video recorded
 - You will only hear the voices of the presenters
- If you have questions please utilize the Q&A function at the bottom/top of your device screen
 - All questions will be answered at the end of this presentation
 - Any questions that cannot be answered tonight will be taken back and added to the question and answer document that will be mailed approximately 1 month from tonight's meeting



Project Team

Dawn Thomas
Program Specialist
Department of Recreation and Parks
rpthom00@aacounty.org

Contractor
E&R Services, Inc
6222 Seabrook Road
Lanham, MD 20706

Robert M. Fernandez, P. E.
Senior Engineer
Department of Public Works
410-222-7938
pwfern83@aacounty.org

Construction Manager
KCI Technologies, Inc
936 Ridgebrook Road
Sparks, MD 21152

Design consultant: WBCM
Randy Hughes, Project Manager



DPWandYOU.com | *Making a difference, together*

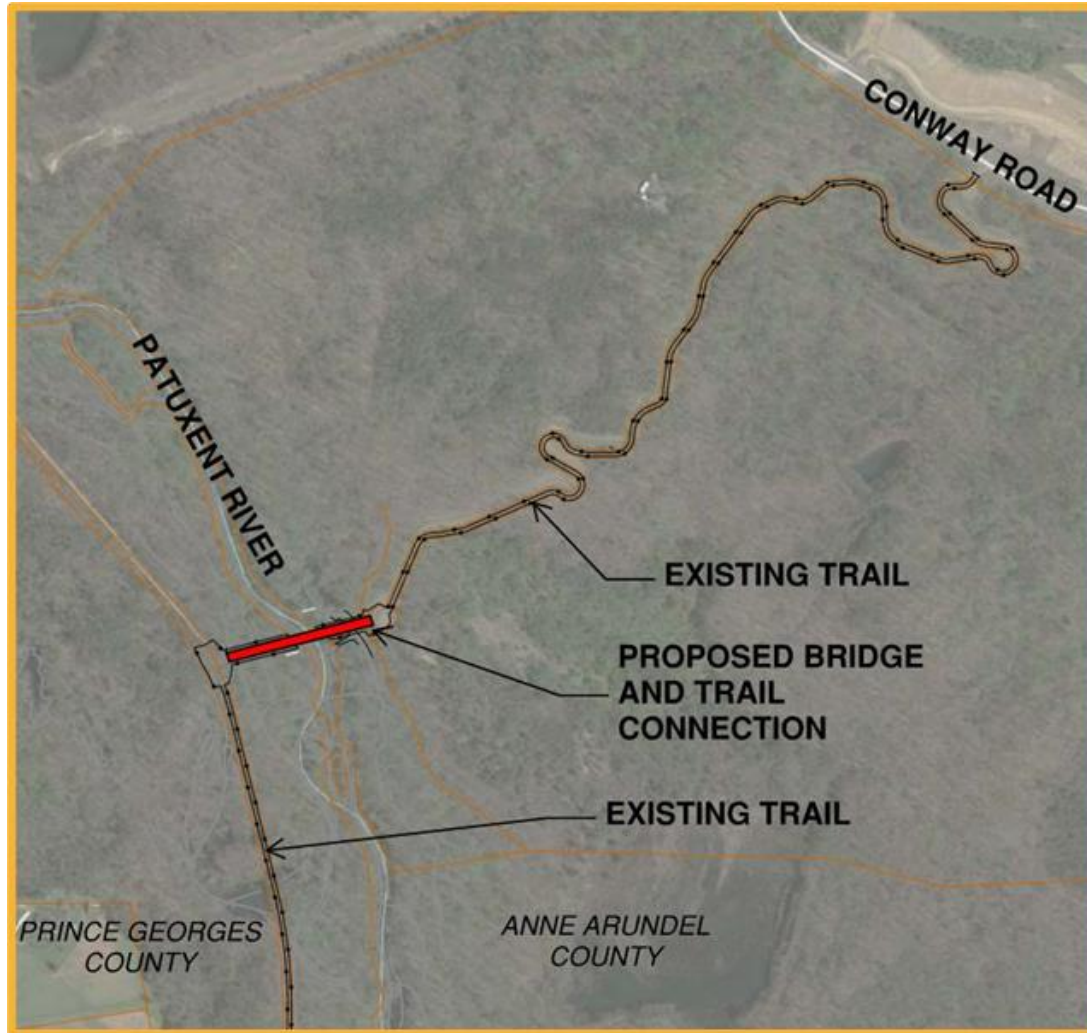


Meeting Agenda

- Project Goals
- Existing Conditions
- Proposed Improvements
- Project Schedule and Duration
- Questions



WB&A Trail Bridge Project Area

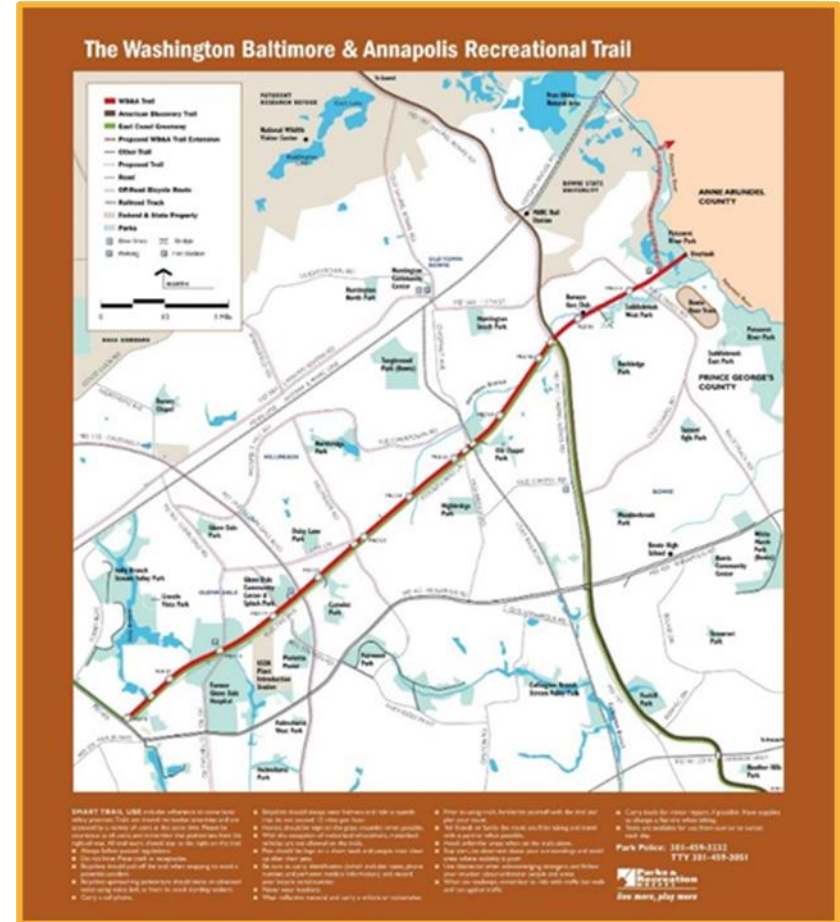


Project Goals

- Connect Anne Arundel and Prince George's Counties
- Bicycle & pedestrian shared-use bridge over the Patuxent River
- Partnership between Anne Arundel and Prince George's Counties
- Funding partnerships:
 - Design funding provided by the Maryland Kim Lamphier Bikeways program.
 - Construction funding provided by Transportation Alternatives Program, administered by MDOT.



STATE HIGHWAY
ADMINISTRATION



Existing Conditions

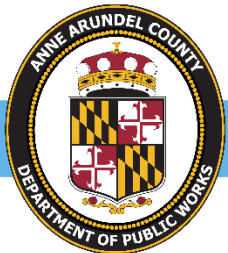


Site of the Proposed Bridge

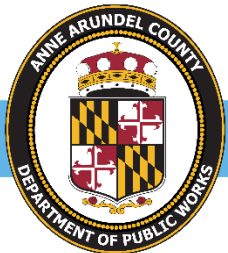
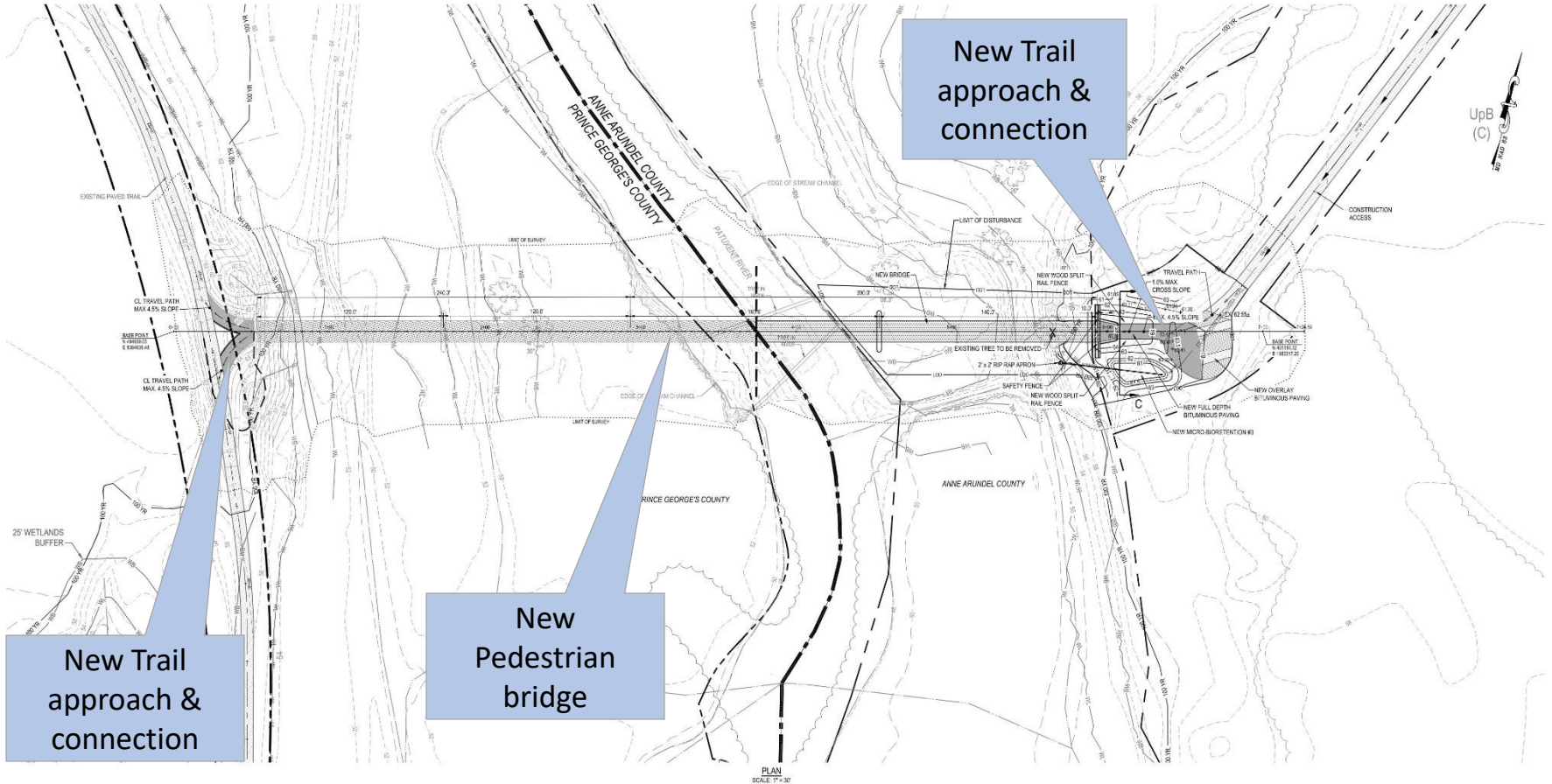


Proposed Improvements

- New pedestrian bridge
- Trail approach connections to existing trails
- Microbioretention facilities stormwater management
- New landscaping

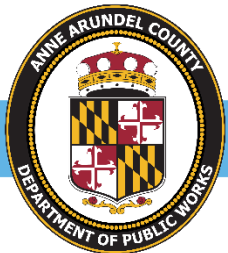


Proposed Site Plan

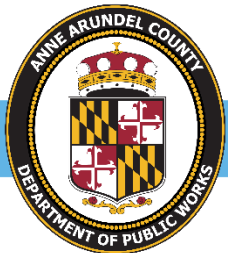


Project Schedule and Duration

- Typical Working Hours: Monday - Friday 7 AM to 5 PM
- Project start date (Approximate): April 2022
- Anticipated completion: Summer 2023



Questions?





Bureau of Utility Operations

24-Hour Emergency

Water Service: (410) 222-8400

Billing Inquiries: (410) 222-1144



Bureau of Engineering

General Inquiries: (410) 222-7500



Bureau of Waste Management Services

Bulk Trash Service / Curbside

Collections: (410) 222-6100



Bureau of Watershed Protection and Restoration

General Inquiries: (410) 222-1072



Bureau of Highways

General Inquiries: (410) 222-7321

Snow Line: (410) 222-4040

Email: hwyscustomercare@aacounty.org

Customer Relations:

(410) 222-7582



Project Team

Dawn Thomas
Program Specialist
Department of Recreation and Parks
rpthom00@aacounty.org

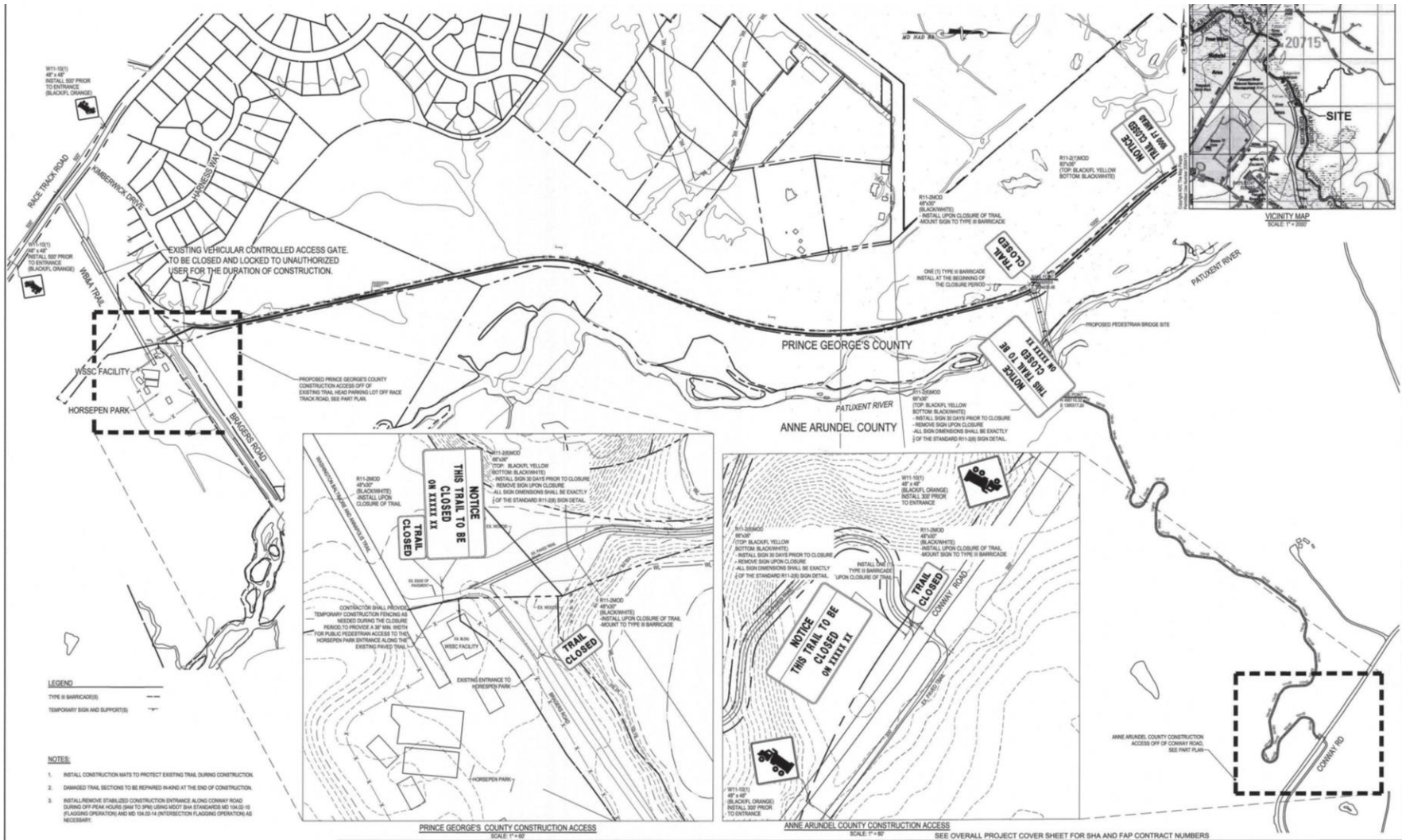
Contractor
E&R Services, Inc
6222 Seabrook Road
Lanham, MD 20706

Robert M. Fernandez, P. E.
Senior Engineer
Department of Public Works
410-222-7938
pwfern83@aacounty.org

Construction Manager
KCI Technologies, Inc
936 Ridgebrook Road
Sparks, MD 21152

Design consultant: WBCM
Randy Hughes, Project Manager



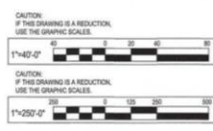


LEGEND

TYPE II BARRICADES

TEMPORARY SIGN AND SUPPORTS

- NOTES:**
1. INSTALL CONSTRUCTION MATS TO PROTECT EXISTING TRAIL DURING CONSTRUCTION.
 2. DAMAGED TRAIL SECTIONS TO BE REPAIRED IN-ROAD AT THE END OF CONSTRUCTION.
 3. INSTALL REMOVABLE STABILIZED CONSTRUCTION ENTRANCE ALONG CONWAY ROAD DURING OFF-PEAK HOURS (9AM TO 5PM) USING 1000' BSA STANDARDS MD 10A15 TO FLAGGING OPERATION AND MD 10A15-4A INTERSECTION FLAGGING OPERATION AS NECESSARY.



WHITNEY BAILEY COX & MAGNAN, LLC
300 East Joppa Road Suite 200 Beltsville, MD 21038
MARK 410.512.4000 FAX 410.504.4100
www.wbcm.com

WBCM
ARCHITECTURE ENGINEERS CONSTRUCTION

STATE OF MARYLAND
PROFESSIONAL ENGINEER

Whitney Bailey Cox & Magnan, LLC
I hereby certify that these drawings were prepared or approved by me, and that I am a duly licensed Professional Engineer under the laws of the State of Maryland.
Whitney Bailey Cox, P.E. (000000000)

NO.	DESCRIPTION	BY	DATE

SEE OVERALL PROJECT COVER SHEET FOR SHA AND FAP CONTRACT NUMBERS

ANNE ARUNDEL COUNTY
DEPARTMENT OF PUBLIC WORKS

88264

W&A TRAIL - BRIDGE AT PATUXENT

TRAFFIC CONTROL PLAN

APPROVED: <i>[Signature]</i> CHIEF ENGINEER	DATE: 8/14/21	APPROVED: <i>[Signature]</i> PROJECT MANAGER	DATE: 8/11/21	SCALE: 1" = 200'	DRAWN BY: M&B/JKL
APPROVED: <i>[Signature]</i> ASSISTANT CHIEF ENGINEER	DATE: 8/11/21	APPROVED: <i>[Signature]</i> CHIEF RIGHT-OF-WAY	DATE: 8/11/21	CHECKED BY: B.L.	SHEET NO. 45 OF 45
PROJECT NO. 2014017000			CONTRACT NO. 2014017000		

