



**ANNE  
ARUNDEL  
COUNTY**

**M A R Y L A N D**

Partnership for Children, Youth & Families



# FY 2020-2022 Community Plan

# Thank you to our planners!

---

## **PARTNERSHIP BOARD:**

Michael Yeakey, Chair  
Kim Davidson, Vice Chair  
Rick Anthony  
Pastor Steve Hall  
Nilesh Kalyanaraman  
Milena Kornyl  
Jim Lighthizer  
Adrienne Mickler  
Doug Mohler  
Susan Nolte  
Chris Rosenthal  
Ryan Voegtlin  
Carnitra White

## **GUIDING COALITION:**

Tim Altomare  
Mike Drummond  
Patrick March  
Derek Matthews  
Georgia Noone-Sherrod  
Vernon Osborne  
William Rowel  
Mary Spencer  
Beverly Wilbourn  
Tatiana Klein

## **STRATEGIC ADVISORS:**

**Paul DiLorenzo**, Casey Family Programs  
**Joan Gillece**, Center for Innovation in Trauma-Informed Approaches  
**Carl Snowden**, Caucus of African American Leaders of Anne Arundel County

“We are so much more powerful together. Not just our dollars, but our energy and effort. I believe we are fundamentally changing the way work gets done for children, youth, and families.”

Dr. Pam Brown



# FY2020-FY2022 Community Plan

---



**Dr. Pam Brown**  
Executive Director

The Anne Arundel County Partnership for Children, Youth and Families began a new community planning process in 2018 after the completion of three distinct, but inter-related, needs assessments authored by Executive Director Dr. Pam Brown.

These include:

- Community Health Needs Assessment;
- County Domestic Violence and Sexual Abuse Assessment; and
- Poverty Amidst Plenty VI, the county wide assessment used as a call to action by the County Executive.

The reports include the perspectives of almost 200 county residents who offered their professional and lived experiences providing or accessing services. An additional 147 diverse county stakeholders participated in an examination of the data collected to hone our priorities, strategies, and future investments in local programs.

The Community Plan continues to focus on prioritized geographic areas of Anne Arundel County where rising negative social determinants of health and racial/ethnic disparities are most prevalent and the largest number of our target populations (families impacted by incarceration, unaccompanied homeless youth, and disconnected youth) are found. The first “Community of Hope” – the Community of Hope in Brooklyn Park – was created in 2016 to address poverty, a lack of resources, and growing needs among underserved populations.

The FY2020-FY2022 plan adds three Communities of Hope: Annapolis, where youth gang and gun violence is on the rise; South County, where few services reach rural families living in poverty; and West County (Meade/Severn), where residents in public and subsidized housing, and low-income military families struggle to afford to live and raise families in our community.

Our Community Plan serves as a call to action for residents, youth, and leaders from civic, faith, business, philanthropic, nonprofit, and government sectors throughout Anne Arundel County. Children, youth, and families are both the heart and the future of our community. Investing in their success and well-being is an investment in all of us and our shared county home.

# Our Community Plan for Children, Youth and Families

## LEAD WITH VISION:

County Executive Pittman's vision for Anne Arundel County: **The Best Place.**

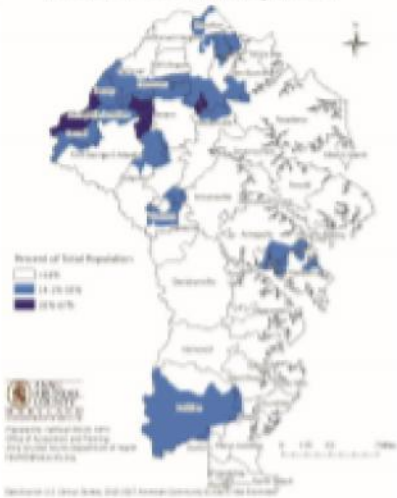
## INFORMED BY DATA:

**3 BIG NEEDS**

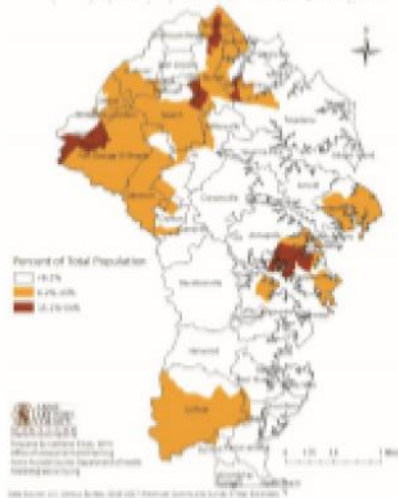
-  Affordable Housing
-  Transportation
-  Childcare

## COLOR AND GEOGRAPHY OF POVERTY

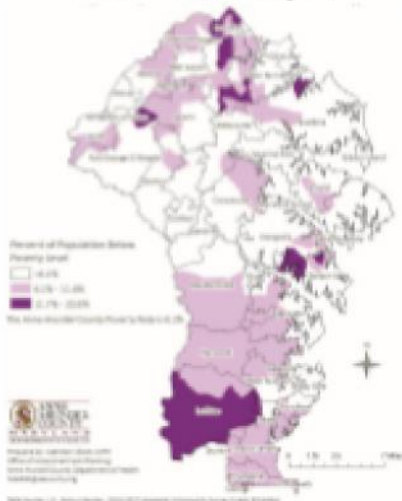
Non-Hispanic Black Population  
Anne Arundel County, 2017



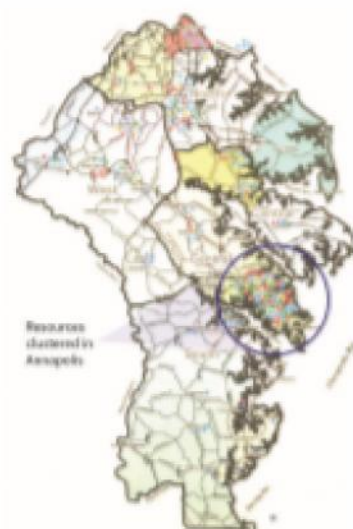
Hispanic (Any Race) Population  
Anne Arundel County, 2017



Poverty Rate by Census Tract  
Anne Arundel County, 2017



Resources in Anne Arundel County



# Our Collective Priorities

---



**Focus on Results:** We are improving six population-level measures of child well-being.

**Priority results** include:

- Families are Safe & Economically Stable
- Healthy Children
- Children Enter School Ready to Learn
- Children Are Successful in School
- Youth Have Opportunities for Employment & Career Readiness
- Youth Will Complete School



**Focus on People:** Our navigators and multi-disciplinary teams are coordinating systems of care for a whole population of struggling families, to break the cycle of poverty using a two-generational approach and trauma-informed care.

**Priority populations** include:

- Hungry Children
- Homeless Youth
- Youth not in School and not Working
- Families Impacted by Incarceration

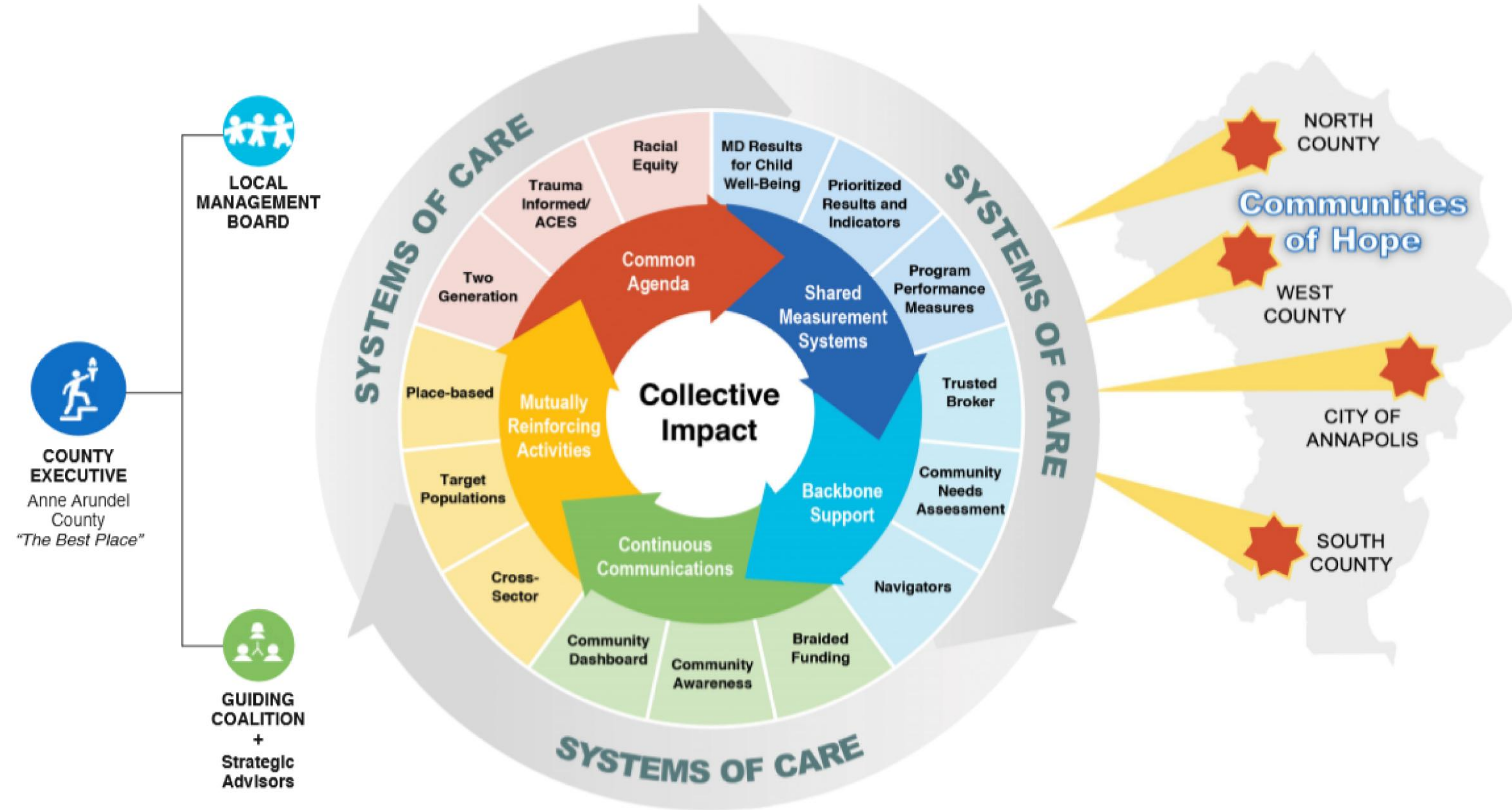


**Focus on Communities:** We work in partnership with local residents and leaders to shine a light on needs, attract resources that reduce racial inequities, and support community solutions to improve outcomes for children, youth, and families.

**Communities of Hope** include:

- **Brooklyn Park/North County:** Reduce urban poverty and bring resources to underserved families and youth
- **City of Annapolis:** Reduce youth gang and gun violence and connect youth to opportunities for school, career, and life success
- **South County:** Reduce rural poverty and improve connections to jobs, health care, and social services
- **West County:** Focus TBD

# Sparking and Sustaining Collective Action



# Focus on Priority Communities

---

## SPOTLIGHT ON BROOKLYN PARK

### Brooklyn Park Community of Hope



#### Community Need

The Brooklyn Park Community of Hope touches the edge of Baltimore City and shares its issues related to urban poverty. North County has the highest population of residents living in poverty (27.3%), the highest rate of substance abuse in the county, and the highest rate of parental incarceration. Much of the area is a food desert, with few locations where healthy food can be purchased. The area has the largest numbers of our priority populations including families impacted by incarceration, disconnected youth, unaccompanied homeless youth, and hungry children.



#### The Plan: An Initial \$20,000 Investment has grown to \$8.26 million in funding and in-kind contributions

In 2016, the Brooklyn Park Community of Hope launched with the help of Carnita White, DDS, Paul DiLorenzo, Casey Family Programs, and four other dedicated partners. Today, more than 250 partners collaborate to deliver an infusion of programs that respond to the basic needs of residents—meeting them where they are with what they need, when they need it.

#### Programs Include:

- Book, toy, baby, clothing, and food pantries in accessible and trusted locations.
- Teen clubs that provide safe, enriching spaces that connect youth to resources and caring adults.
- Social workers in the community, poverty programs, and workforce advice at the local library.
- Dozens of regular events that empower parents and other community members around topics like health, financial literacy, education, and advocacy.



“Five years ago, no one was talking about Brooklyn Park. Now everyone is.”

- Brooklyn Park resident

The Brooklyn Park Community of Hope is leaving its mark on the built environment of the county as well—eradicating pests, renewing alleyways, building pocket parks and sports fields, improving lighting and signage, and adding bus routes.

The result? Community members working alongside public and private partners to reduce poverty and rebuild their community's future.



### What's Next: The Youth Center

A Brooklyn Park resident said, “The biggest need is something for our kids to do,” so Brooklyn Park prioritized a place for youth to access a variety of critical resources under one roof and create connections. After engaging the community to explore options, the Brooklyn Park Community of Hope is developing plans to build a state-of-the-art youth center behind Park Elementary School.

The center will feature basketball courts, a gym, a dog park, and a variety of human services for youth, such as alternative education and workforce development programs. Currently, in the design phase, this public/private partnership is built on the generous support of partners like AA County Recreation and Parks, Baybrook, the YMCA, and private foundations.



### For More Information about the Brooklyn Park Community of Hope:

Mizetta Wilson, [srwils00@aacounty.org](mailto:srwils00@aacounty.org), 410-222-7264





# Focus on Priority Communities

---

## SPOTLIGHT ON ANNAPOLIS

### **Annapolis Community of Hope: The Annapolis Collaborative for Change**



#### **Community Need**

Annapolis Collaborative for Change has a high proportion of public and subsidized housing, most of which is in need of repair or replacement. Eighty-five percent of families in public housing are led by a single female. With limited transportation and affordable childcare, most families in public housing have become mired in intergenerational poverty. To address the root causes of these issues, Annapolis Collaborative for Change secured a federal grant from the Office of Juvenile Justice and Delinquency Prevention (OJJDP) to reduce youth gun and gang violence, focusing on youth in public and subsidized housing.



#### **Multi-year strategic plan and programs underway**

The Collaborative's strategic plan was approved by OJJDP in March 2019. Additional funding from the state and Maryland Judiciary will fund new and expanded programming, such as Black Wall Street, Re-entry Mediation, Parent Power, and GED Preparation. Partners began recruiting program participants July 1.



#### **What's Next**

The Collaborative is in the first phase of implementation with youth mentoring, after-school help, re-entry + mediation + GED, and parent programs in Annapolis Gardens, Bywater, and Woodside Gardens/Newtowne 20. Resident and youth councils are being created to guide the rollout of the programs and provide feedback on their effectiveness.



#### **For More Information about the Annapolis Collaborative for Change:**

Twila Mohammed-Davis, Special Projects Coordinator, SRMoha33@aacounty.org, 410-222-7596



## SOUTH COUNTY



### Community Need

In South County, our most rural area, residents lack access to jobs, health care, transportation, and affordable housing. South County is also plagued by a large number of opioid overdoses and deaths, relative to its population size. Anecdotal data suggests that many youth are leaving the area due to the lack of transportation and job opportunity.

Work is underway with more than two dozen partners setting priorities to meet basic needs.

#### Current activities include:

- Introduction of the South County Zonal Service—a new on-demand curb-to-curb shuttle spearheaded by the county transportation department.
- Food distribution from the faith-based community.
- Planning for hiring events, apprenticeships, and vocational training scholarships by the workforce community at the library.
- Tutoring, drug awareness social worker at the Deale Library, and health programming from a variety of community partners.



#### For more information about South County:

Alli Holstrom, SRHols44@aacounty.org, 410-222-7598

## WEST COUNTY



### Community Need

West County is our most recent Community of Hope. This area has a high concentration of women, people of color, and military families living in public housing and lacking access to health care, transportation, and affordable child care.

The Partnership was recently awarded a planning grant from the United Way of Central Maryland to build a West County collaborative.

#### Next steps include:

- Gathering data through door-to-door outreach and interviews.
- Using data to narrow the focus of the initiative to a more targeted geographic area.
- Recruiting community leaders and engaging them in leadership roles.
- Establishing connections to systems and resources.



#### For more information about West County:

Diana Taylor, srtayl33@aacounty.org, 410-222-1329

**For more information on the Partnership or our Community Plan, please contact:**

**Pam Brown**

Executive Director

[SRBrow00@aacounty.org](mailto:SRBrow00@aacounty.org)

P: 410-222-7652

**Alli Holstrom**

Compliance Director

[SRHols44@aacounty.org](mailto:SRHols44@aacounty.org)

P: 410-222-7598



ANNE  
ARUNDEL  
COUNTY

MARYLAND

Partnership for Children, Youth & Families