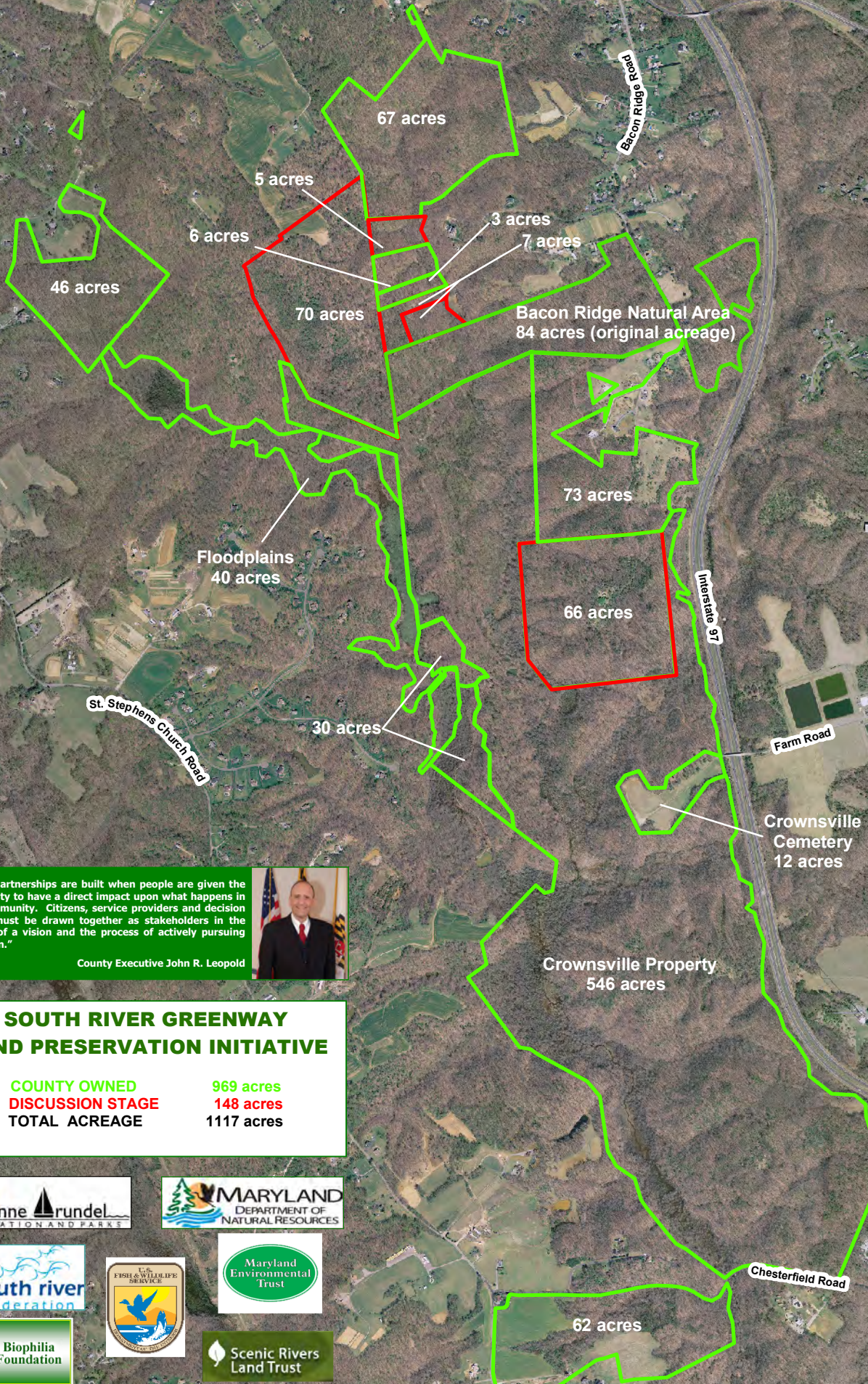


BACON RIDGE NATURAL AREA in the SOUTH RIVER GREENWAY

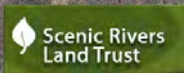


"Strong partnerships are built when people are given the opportunity to have a direct impact upon what happens in their community. Citizens, service providers and decision makers must be drawn together as stakeholders in the creation of a vision and the process of actively pursuing that vision."

County Executive John R. Leopold



SOUTH RIVER GREENWAY LAND PRESERVATION INITIATIVE	
COUNTY OWNED	969 acres
DISCUSSION STAGE	148 acres
TOTAL ACREAGE	1117 acres



As of January 2011