

LOCATION AND CONTEXT

The Dairy Farm is in Gambrills, Maryland in northwest Anne Arundel County on Annapolis Road (Maryland Route 175). The Dairy Farm is within two miles of the intersection of Interstate 97 / Maryland Route 3 and less than eight miles from the Baltimore-Washington Parkway. The South Shore Trail, planned to stretch between Bestgate Road in Annapolis to Odenton including a portion along Maple Road, will link to the Dairy Farm via Gambrills Road (Figure 1a). The Gambrill Heights Community is on the northeast border with Dairy Farm Road, the neighborhood of Arundel View, and Odenton Natural Area on the northwest; and a Baltimore Gas and Electric Company (BGE) Substation on the south. Towser's Branch (a tributary of the Little Patuxent River) and a BGE powerline right-of-way separate the Dairy Farm from the Four Seasons Community on the west and south. Two parcels are separated by roads: approximately 36 acres on the northwest side of Dairy Farm Road and approximately 13 acres north of Annapolis Road between Maple Road and Gambrills Road. Several schools are within walking distance to the site including: Four Seasons Elementary, Waugh Chapel Elementary, Arundel Middle, and Arundel High.

At present, the Dairy Farm is leased to Maryland Sunrise Farm, LLC. The 857 acres are composed of natural areas along Towser's Branch, steep slopes, pasture land, field crops, and the Village. Most of the barns, outbuildings, and housing for farm employees are located in the Village and are being shared by the County and Maryland Sunrise Farm (Figure 1b).

The Dairy Farm is considered eligible under the National Registry of Historic Places as a Historic District, requiring special actions and considerations to protect the historical significance of the site. The main contributing features of the Historic District are the buildings within the Village, the roads within the Village, and the viewshed of the farm fields. As the Master Plan is implemented, efforts will protect the unique historical and cultural resources that exist at the Dairy Farm.

Hammond's Connection, the primary focus of this Master Plan, is comprised of approximately 140 acres along the western boundary with Towser's Branch and the 36 acres on the northwest side of Dairy Farm Road.

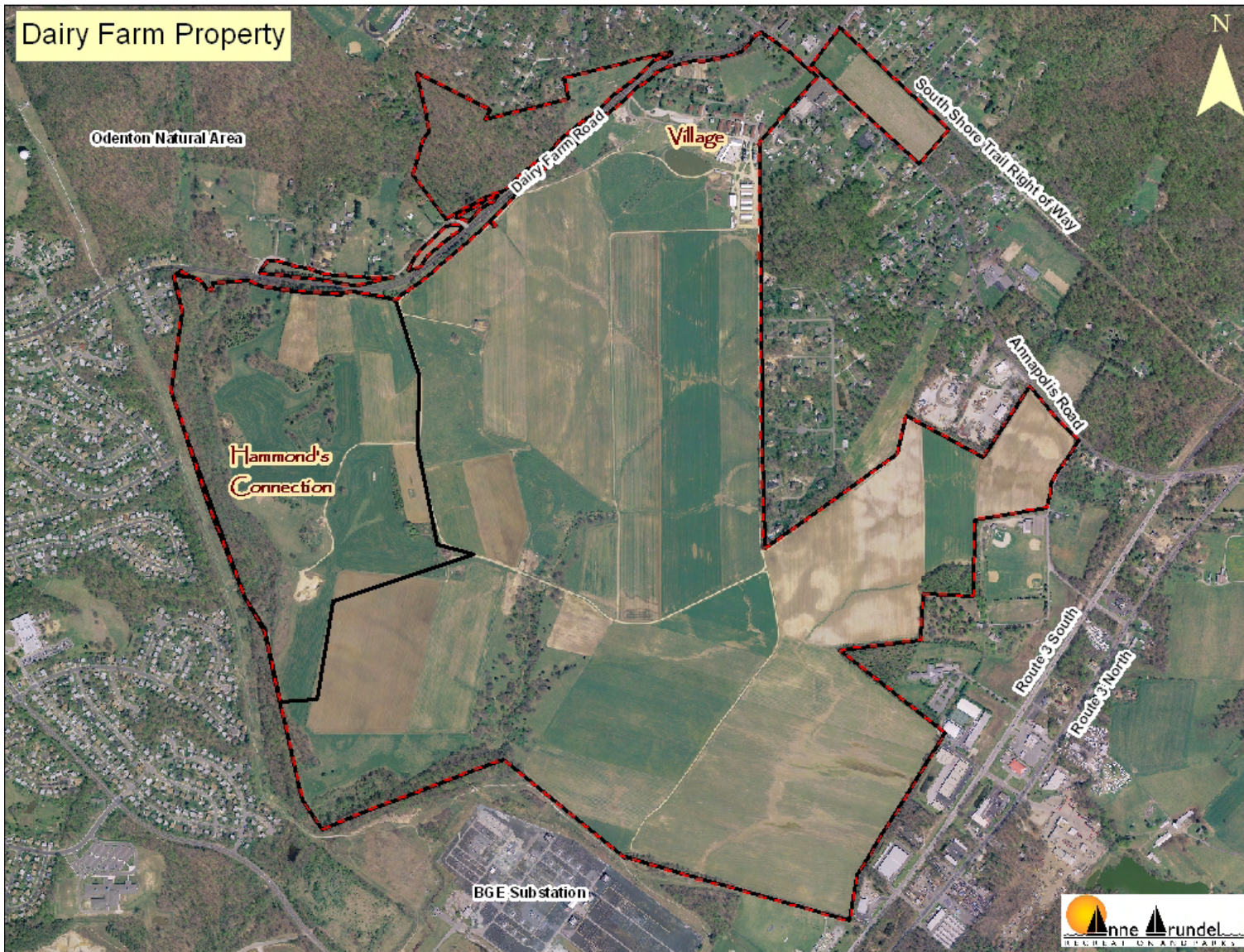


Figure 1a. The 857-acre Dairy Farm

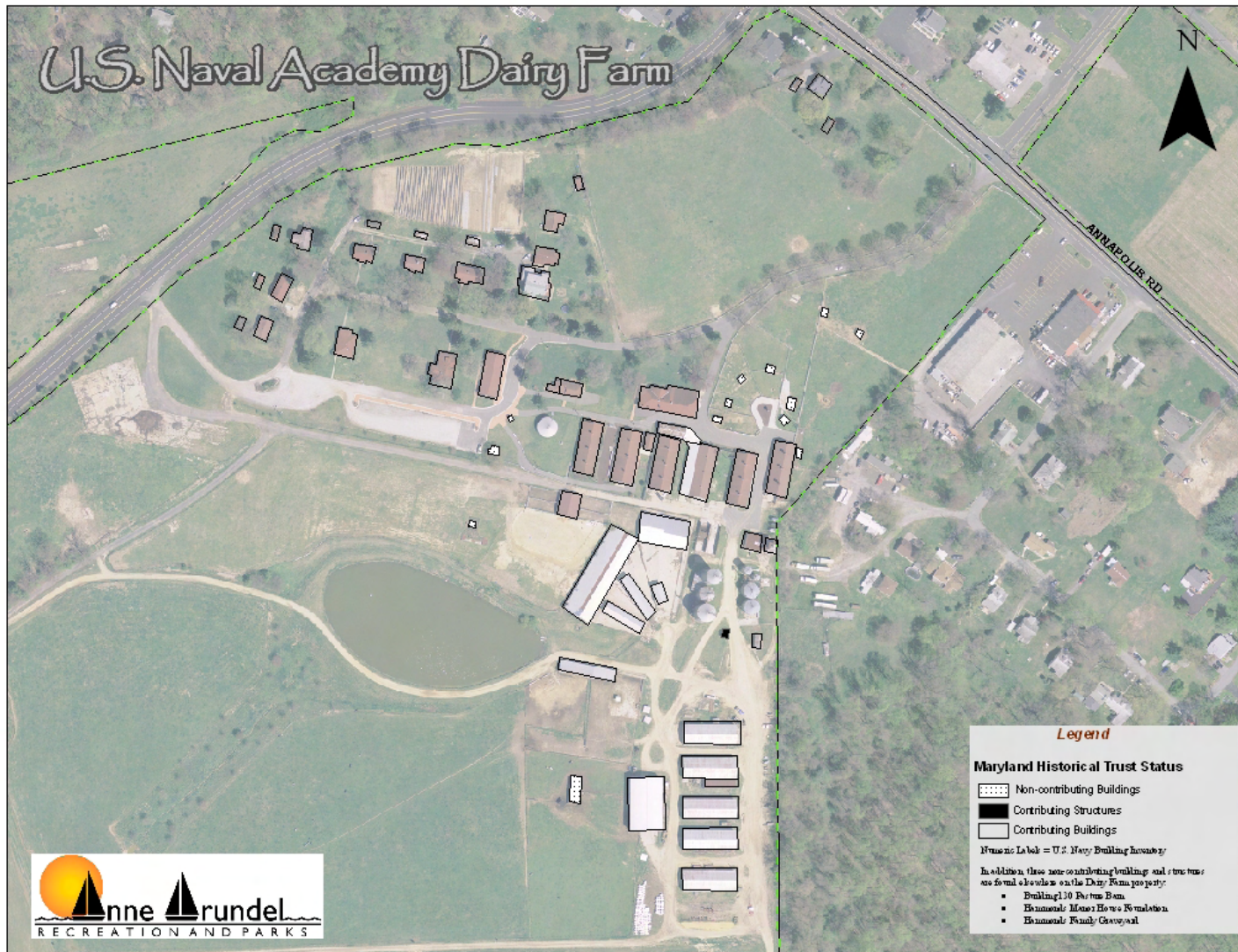


Figure 1b. The Village within the Dairy Farm