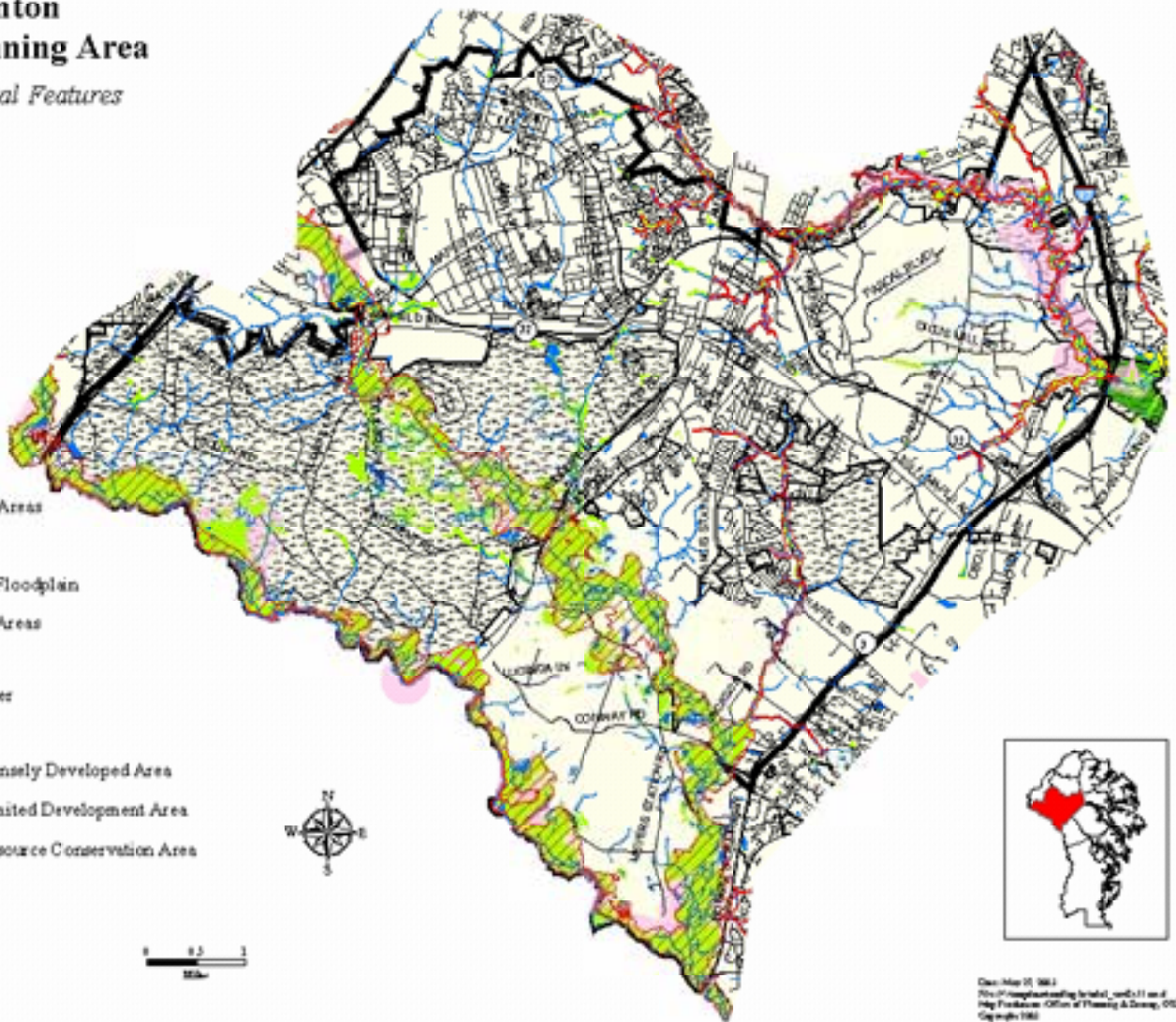


Odenton Small Planning Area

Environmental Features

Legend

-  Protected Areas
-  Wetland
-  100 Year Floodplain
-  Sensitive Areas
-  Streams
-  Open Water
- Critical Areas**
-  IDA - Intensely Developed Area
-  LDA - Limited Development Area
-  RCA - Resource Conservation Area



Dec 14, 2011
City of Odenton, Maryland
City of Odenton, Office of Planning & Design, GIS Section
Copyright 2011