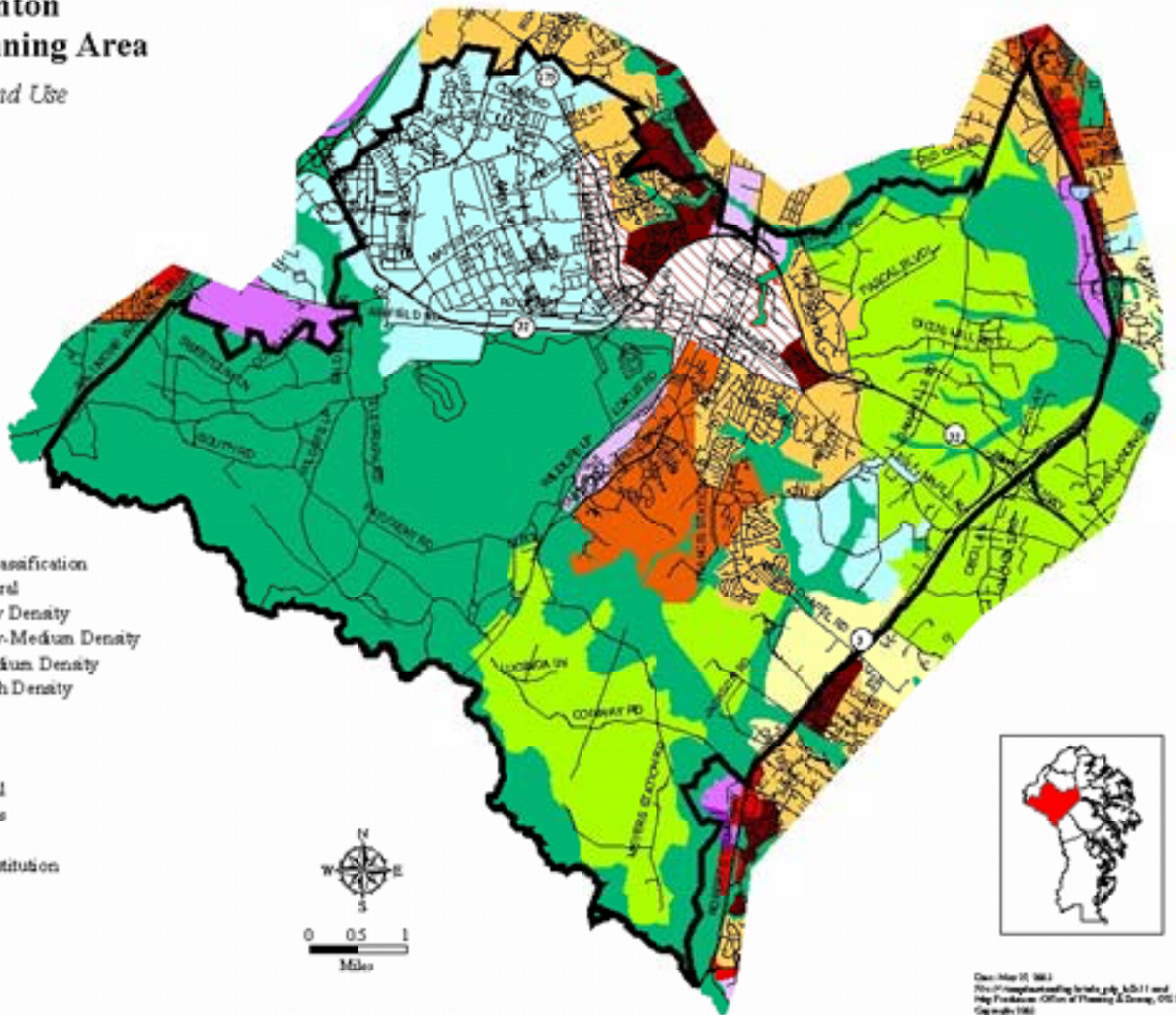


Odenton Small Planning Area

GDP Land Use

ODP Land Use Classification

- Rural Agricultural
- Residential Low Density
- Residential Low-Medium Density
- Residential Medium Density
- Residential High Density
- Commercial
- Industrial Park
- Light Industrial
- Heavy Industrial
- Natural Features
- Town Center
- Government Institution
- Closed Landfill



Dec. Mar. 07, 2003
The Maryland Department of General Services, Office of Planning & Design, GIS Division
Copyright 2003