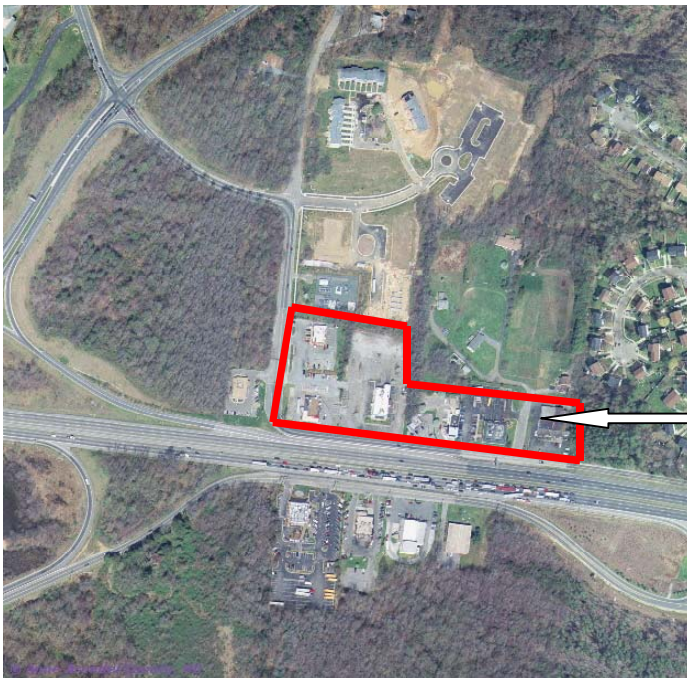


CHAPTER 11 COMMUNITY DESIGN

The Plan recommends revitalization of the businesses along East College Parkway, east of Cape St. Claire Road. This area, directly north of US 50, once supported restaurants and other service businesses primarily for traffic along highway. In the early 1990's, US 50 was widened, medians were installed and the traffic lights that served these businesses were removed. These road improvements limited access to commercially zoned properties on both the north and south sides of US 50.

Redevelopment of this commercial area focuses on creating pedestrian friendly businesses that serve the local communities including Revel Downs, Yorktown and Cape Saint Claire. Creation of a "Main Street" where buildings are oriented to the street and sidewalks, with storefronts and rear parking is encouraged in this area. Streetscaping improvements such as landscaping, decorative benches and lighting and appropriate signage is also needed. Buffering and screening from US 50 would promote small-scale development conducive to neighborhood shops and eateries. The cornerstone to this concept is a pedestrian network that would include sidewalks linking businesses and small pocket parks together and trail linkages that connect this commercial node with neighborhoods, Sandy Point State Park and with other trails.



East College Parkway
Revitalization Area