

I. INTRODUCTION

The Pasadena/Marley Neck Small Area Plan is a refinement of the 1997 *Anne Arundel County General Development Plan*.

The purpose of the Pasadena/Marley Neck Small Area Plan is to enhance the quality of life in the area and assist with implementation of the goals and recommendations of the General Development Plan. This planning process also seeks to develop collaborative cooperation between citizens, businesses and the County in the planning and development processes.

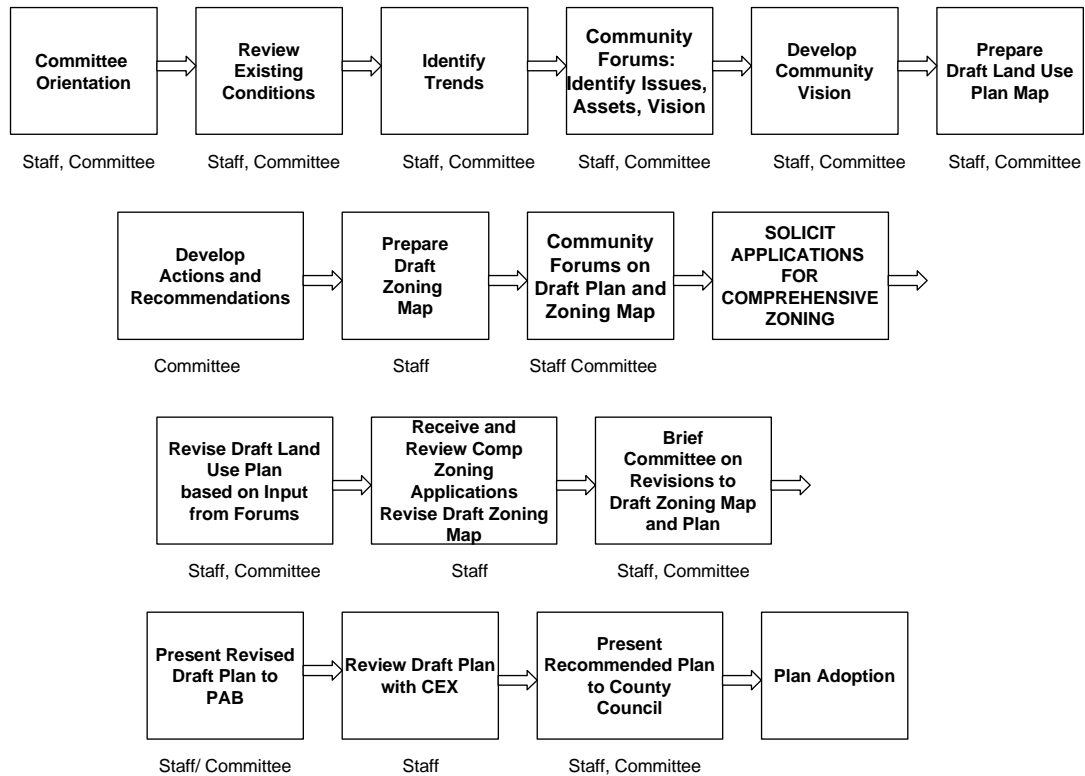
The Plan's development was a collaborative process involving the Pasadena/Marley Neck Small Area Plan Committee, staff from the Office of Planning and Zoning, other County agencies and the public. Together, the Small Area Planning Committee and staff have held a public forum, conducted regular committee meetings, and met with individuals within the Small Area to help identify assets, issues, opportunities and a vision for the future. Topics discussed include land use changes, environmental and cultural resource enhancements, road improvements, and needed community services. The Committee also selected the Riviera area as an opportunity site for improvements, landscaping and some redevelopment opportunities.

This Plan for the Pasadena/Marley Neck Small Area consists of a document, maps and tables. The document gives a background on the community history and demographics, and addresses land use, zoning, economic development, environmental cultural resources, transportation, community facilities and community design. The maps and tables show existing conditions and proposed changes. Together, the text, maps and tables amend the General Development Plan

The Small Area Planning Process

Starting with the appointment of committee members and ending with the adoption of a long-range plan for the community, the Small Area Plan process was designed to maximize public participation, build consensus and present the best plan for the future of the small planning area. All committee meetings have been open to the public. In addition, a public forum was held near the beginning of the process to hear from the community about assets, issues, opportunities and a vision for the future. Another public forum is held to present the draft plan that includes recommendations on land use, zoning, environmental and cultural resources, transportation, community facilities and community design. The Committee and staff will then take comments from the second public forum and formulated a second draft plan. This draft plan will then be presented to the Planning Advisory Board (PAB) for further review and comment by the public. Comments from the PAB will be provided to the County Executive for consideration prior to introducing the Small Area Plan to the County Council for public hearing and adoption.

Small Area Planning Process - Tasks and Responsibilities



Once the Plan has been adopted by the Council and incorporated into the *General Development Plan*, planning staff will begin the implementation of the Plan recommendations. It is hoped that the citizens who participated in the Plan development will continue to follow the process and provide input during the implementation stage.

Acknowledgements

Pasadena/Marley Neck Small Area Plan Committee

- Paul Higgins (Chair)
- Bonnie Hoyas (Vice-Chair)
- Ruth Bell
- Reynold Brenna
- Thomas Burhnam
- Catherine Gorski
- George Harmon
- David Jacobs
- Marlene Patillo
- William Strong
- Joan Urbas

Anne Arundel County, Office of Planning and Zoning

Joe Rutter, Planning and Zoning Officer
James J. Cannelli, Assistant Planning and Zoning Officer
Richard Josephson, Long Range Planning Administrator

Pasadena/Marley Neck Small Area Plan Core Team

Vivian Marsh, Team Leader
Cindy Carrier, Assistant Team Leader
Dana Wootton, Secretary
Sharon Faulkner, Secretary

Long Range Planning

John Leocha, Water and Sewer Facilities Planning
Kui Zhao, Demography and Market Analysis
Jody Vollmar, Outreach Coordinator

Zoning Division

Lois Villemaire, Administrator
Suzy Diffenderfer, Zoning Analyst

Transportation Division

George Cardwell, Administrator
Harvey Gold, Transportation Planner
Natalie Latham, Transportation Planner

GIS Mapping and Graphics

Margaret Kaii-Ziegler
Charlie Abrahamson
Mark Nowak
Karen Buoncristiano
Bill Grauer

Anne Arundel County, Office of Environmental and Cultural Resources

Ginger Ellis, Administrator
Chris Victoria, Environmental Planner
Mary Searing, Environmental Planner
Donna Ware, County Historian
Jane Cox, Archeologist

Consultant Assistance

Rhodeside and Harwell, Inc.

Other Anne Arundel County Support

Board of Education – Chuck Yokum

Fire Department – Michael Schaal

Library – Cathy Butler

Police Department – George Gibmeyer, John McAndrew

Department of Public Works – Ken Fleming, Darryl Hockstra, Jim Schroll, Laura Layton

Department of Recreation and Parks – Jack Keene, Brian Woodward

Arundel Economic Development Corporation – William Badger