



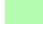








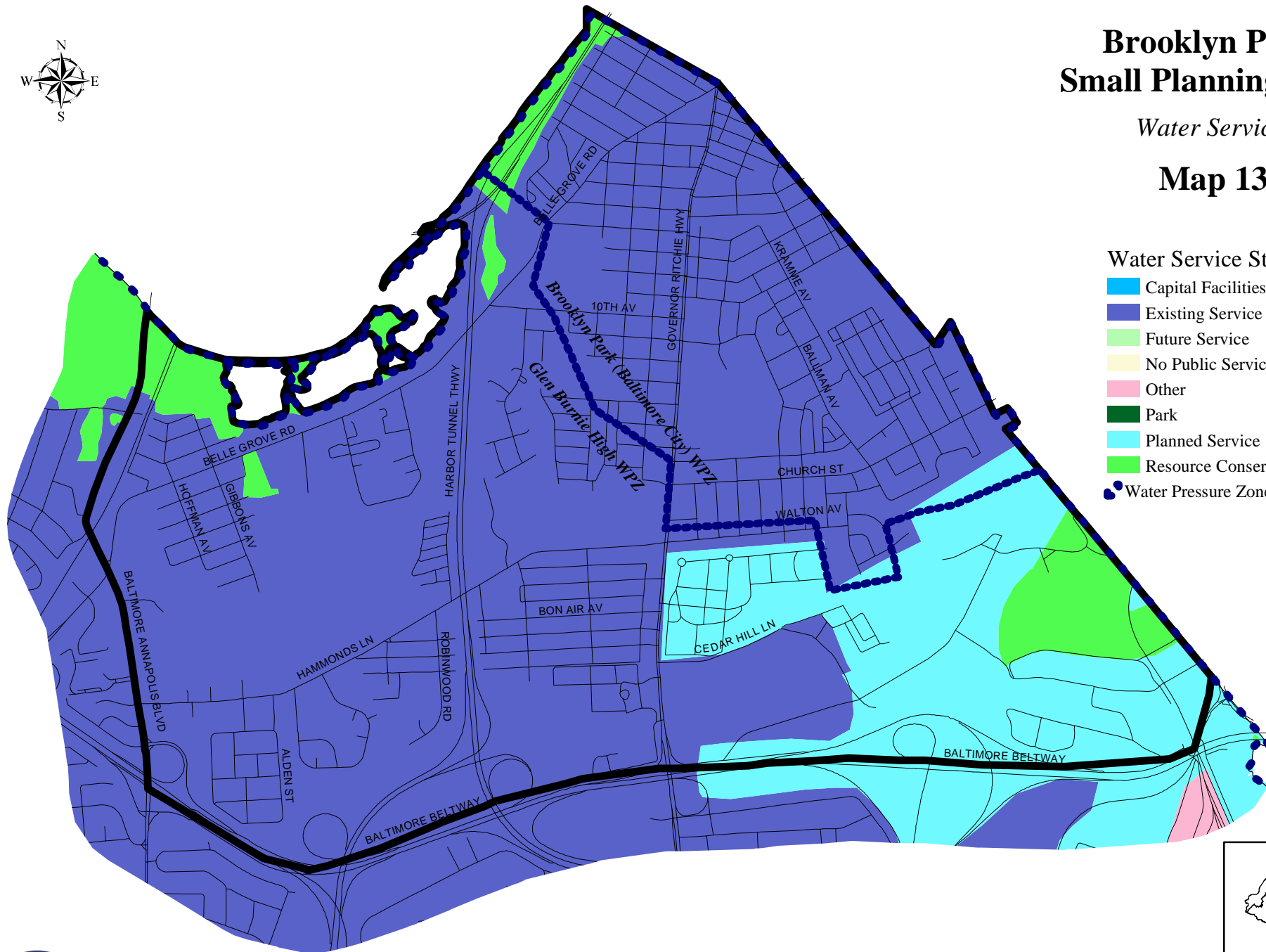
Brooklyn Park Small Planning Area

Water Service

Map 13

Water Service Status

-  Capital Facilities
-  Existing Service
-  Future Service
-  No Public Service
-  Other
-  Park
-  Planned Service
-  Resource Conservation Area
-  Water Pressure Zone Boundary



Scale: 1 inch = 2,000 feet

Date: April 2, 2003
File: N:/mapdata/smallap.bi/bkp/projects/bkp_watnew.mxd
Map Production: Office of Planning & Zoning, GIS Section
Copyright 2003

