



**ANNE  
ARUNDEL  
COUNTY**

M A R Y L A N D

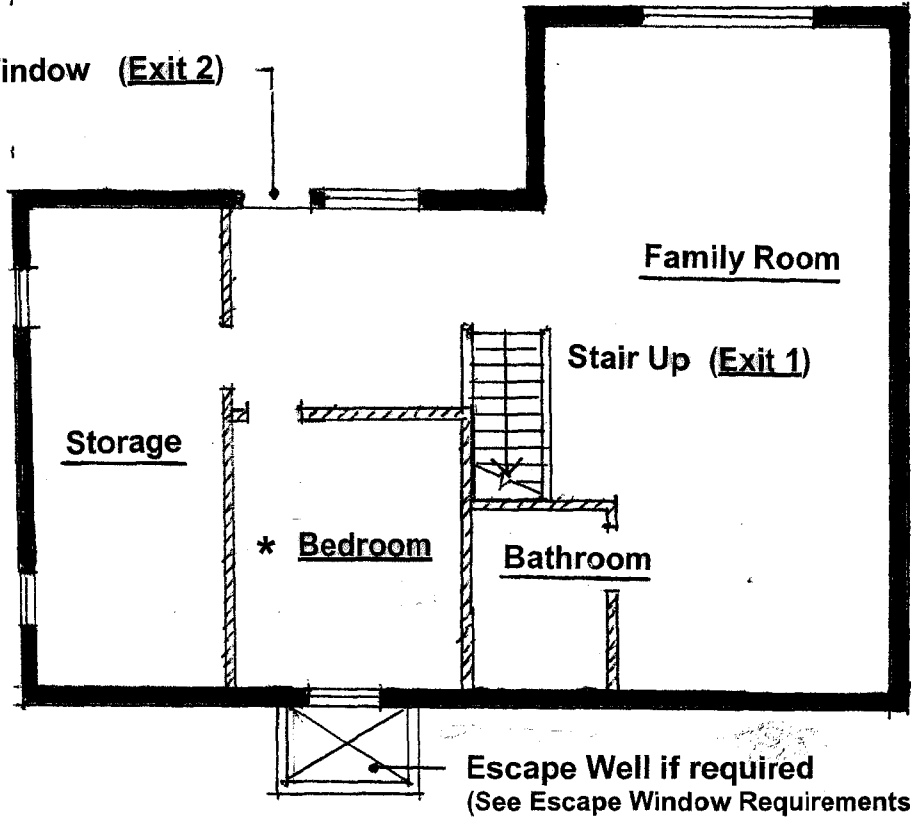
*Department of Inspections and Permits  
2664 Riva Road, Annapolis, MD 21401  
Telephone: (410) 222-7700  
Fax: (410) 222-7492  
www.aacounty.org*

**Finished Basement General Code Requirements**

<u>Habitable Rooms</u>	Min. Area	70 sf
	Min. Horizontal Dimension	7'
<u>Bedroom Window</u> IRC, Section R-310	Min. Window Required	1 ea
	Min. Net Clear Opening	5.7 sf
	Min. Net Clear Opening Height	24"
	Min. Net Clear Opening Width	20"
	Max. Sill Height	44"
<u>Hallways</u>	Min. Width	36"
<u>Stairways</u>	Min. Clear Width	36"
	Min. Headroom	6' - 8"
	Min. Tread	9"
	Max. Riser	8-1/4"
<u>Working Space</u> <u>@ Electric Equipment</u>	Min. Width	30"
	Frontal Clearance	36"
<u>Bathrooms</u>	Non-absorbent gypsum base board around shower and bath areas	
<u>Stud Walls</u>	2" x 4" at 16" o.c. Pressure treated sole plates	
<u>Exitways</u>	2 independent exitways required from basement Per IRC R-310	
<u>Wall Covering</u>	1/2" gypsum board Paneling (450) Max. Smoke Density) (200) Max. Flame Spread Classification	
<u>Insulation</u>	R-8 insulation Note: R-11 Insulation required in all areas above 30" below finished grade	
<u>Ceiling Height</u>	Habitable Rooms	7'-0"
	Other Areas	6'-8"
	Under Beams and Ducts	6'-4"
<u>Firestopping</u>	Firestop all duct chases, bulkheads, laundry chutes, metal flues, tub traps and all shafts at each floor	
<u>Smoke Detectors</u>	All smoke detectors shall have internal battery back-up plus hardwiring	
<u>Warm Air Furnaces</u>	Do not install in closets, bathrooms and bedrooms	
<u>Fuse Box</u>	Do not locate fuse box in clothes closets	
<u>Other Permits</u>	All electrical, mechanical and plumbing construction must be done in accordance with Anne Arundel County Codes and subject to field inspection.	

50'

Exterior Door or Egress Window (Exit 2)



\* Egress Window or Exterior Door required for Bedroom

# Finish Basement Floor Plan

Finish Basement - 2 exits required, 1 directly to the exterior for fire department rescue  
(See Finish Basement General Code Requirements for Minimum Egress Window Size)