

# FACILITY & CURBSIDE COLLECTION HOLIDAY SCHEDULE

This schedule is available at  
[www.aacounty.org/DPW/WasteManagement/HolidaySchedule.cfm](http://www.aacounty.org/DPW/WasteManagement/HolidaySchedule.cfm)

Holidays	2011	Convenience Centers & Landfill	Curbside Collection
Independence Day	JULY 4 (MON)	Closed	No
Service Reduction Day	SEPT 2 (FRI)	Closed	Yes
Labor Day	SEPT 5 (MON)	Closed	No
Defender's Day	SEPT 12 (MON)	Open •	Yes
Columbus Day	OCT 10 (MON)	Open •	Yes
Veterans Day	NOV 11 (FRI)	Closed	Yes
Service Reduction Day	NOV 23 (WED)	Closed	No
Thanksgiving Day	NOV 24 (THUR)	Closed	No
Thanksgiving Friday	NOV 25 (FRI)	Closed	Yes
Service Reduction Day	DEC 23 (FRI)	Closed	Yes
Christmas Eve	DEC 24 (SAT)	Closed	No
Christmas Day (County Observed)	DEC 26 (MON)	Closed	Yes

2012			
New Year's Day (County Observed)	JAN 2 (MON)	Closed	Yes
Martin Luther King Day	JAN 16 (MON)	Closed	Yes
Lincoln's Birthday	FEB 13 (MON)	Open •	Yes
Washington's Birthday	FEB 20 (MON)	Closed	Yes
Good Friday	APRIL 6 (FRI)	Closed	Yes
Service Reduction Day	APRIL 9 (MON)	Closed	Yes
Service Reduction Day	MAY 25 (FRI)	Closed	Yes
Memorial Day	MAY 28 (MON)	Closed	No

• The Sudley Convenience Center is closed ALL Mondays.

**Effective July 1, 2011**  
**All Waste Management Services Facilities**  
**Are CLOSED On Sundays**



# RECYCLING

AT THE MILLERSVILLE LANDFILL & RESOURCE RECOVERY FACILITY



CARDBOARD



COMPUTERS & ELECTRONICS



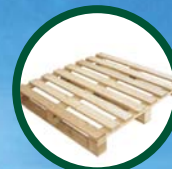
BATTERIES



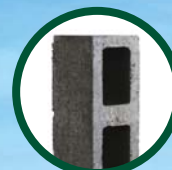
SCRAP METAL & APPLIANCES



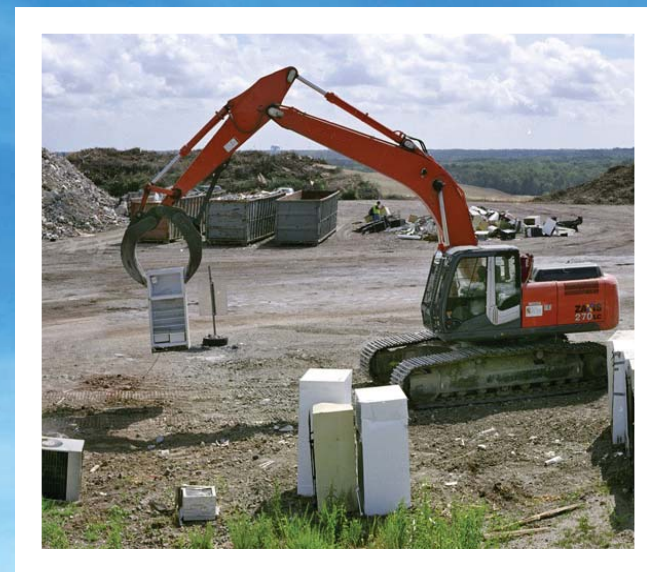
YARD WASTE



PALLETS



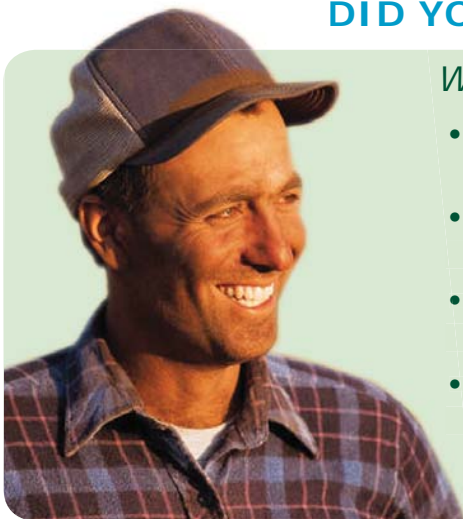
RUBBLE



Monday - Saturday • 8 AM - 4 PM  
[www.aacounty.org/DPW/WasteManagement](http://www.aacounty.org/DPW/WasteManagement)

# NEVER THROW AWAY AN OPPORTUNITY TO RECYCLE

## DID YOU KNOW?



### WHEN YOU RECYCLE, you...

- save valuable manufacturing resources from being wasted
- extend the life of the County's only municipal landfill
- avoid higher fees due to increased operating costs
- could improve your bottom line, if you operate a business

Recycle More Often. [com](http://com)

## PROPER LOADING OF MATERIAL

For a quick and safe visit, organize your load so that you can unload each material separately at different sections of the facility. If you have large quantities of several types of material, consider bringing only one material per trip.

### SORT YOUR ITEMS

- Asphalt Shingles
- Automobile Batteries
- Cardboard
- Electronics
- Rubble
- Scrap Metal
- Tires
- Paper, Plastic, Metal & Glass
- Wood Pallets
- Yard Waste
- Trash

All loads are subject to inspection.



## RECYCLABLES ACCEPTED AT THE LANDFILL

### Asphalt Shingles

### Automobile Batteries

### Computers and Electronics

Computer monitors, CPUs, cables, mice, keyboards, printers, as well as TVs, VCRs, cell phones and more

### Cardboard

Large loads of cardboard are accepted.

### Household Recyclables

- Paper Cardboard, books, office paper, junk mail, boxes and more!
- Plastic Bottles, jars, tubs, toys, furniture, bags, containers and more!
- Metal Cans, hangers and foil
- Glass Food and beverage containers of any color, shape and size

### Pallets

Wood and plastic (remove any metal or plastic banding)

### Plastic

Patio furniture, children's playsets, storage containers (like bottles, trash cans and buckets), flower pots, shrink wrap, toys and lawn furniture. Plastic bags should be bundled together in one bag.

### Propane Tanks

1 lb. and 20 lb. only (empty or full)

### Rubble

Concrete, brick, block, asphalt and stone

### Scrap Metal/Appliances

Items with Freon (refrigerators, humidifiers, air conditioners) must be lifted, not tossed, from a vehicle into the designated Freon recovery area.

### Tires

Passenger or light truck tires only. More than four tires will be accepted for a fee.

### Yard Waste

Leaves, grass clippings, trees and brush

## MATERIAL AVAILABLE TO RESIDENTS

Verify availability by calling (410) 222-6108 before making a trip.

- Firewood
- Mulch
- Rubble