

Plowing Snow in a Cul-de-sac

Introduction

The Anne Arundel County Department of Public Works completes priority plowing during winter storm events. You can find out more about the County winter storm response plan by visiting www.aacounty.org/dpw/snowinformation.

The County incurs proportionally more time, effort and cost clearing snow from culs-de-sac. In order to increase efficiency, crews will follow these standards in plowing snow from culs-de-sac.

These standards will also explain how residents can help our snow plow operators be most effective when responding to winter weather.

Facts

Merriam-Webster.com defines a cul-de-sac as a street or passage closed at one end. (Figure 1)

In urban planning, a cul-de-sac is created to limit through-traffic in residential areas. The cul-de-sac is a local street that primarily serves to provide access to properties rather than a transport function.

The County's inventory of more than 6,300 roads classifies over 1,300 of these roads as culs-de-sac or courts. Many County residents live on culs-de-sac. Many residents share different opinions on the manner in which snow plowing operations should be conducted.

Preferred Plowing Strategy

The Department of Public Works makes one pass on the outside of the cul-de-sac, pushing snow toward the center. If cul-de-sac dimensions or a plowing vehicle's size prevents plowing in a continuous turning movement, the plowing vehicle will make multiple linear passes on the outside of the cul-de-sac, pushing snow to available areas on the perimeter of the cul-de-sac, to approximate a single, continuous pass. This allows residents to access their driveways and exit out of the cul-de-sac.

If conditions dictate, additional clearing of the cul-de-sac may occur in the storm cleanup phase.

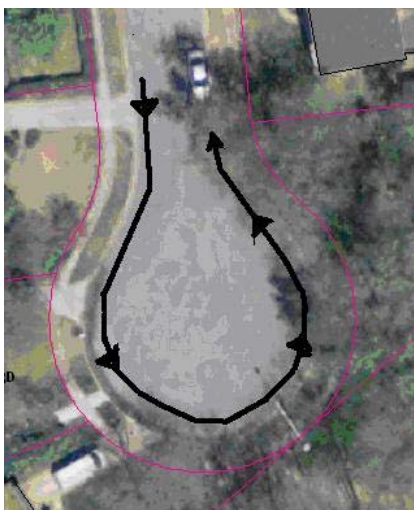


Figure 1 - Typical cul-de-sac

Help Us Help You

The County's preferred plowing strategy cannot be implemented if certain conditions exist within the cul-de-sac. Chiefly among these are:

- Vehicles parked at curbside;
- Vehicles parked "head in" around the cul-de-sac;
- Adequate space for snow storage within the cul-de-sac;
- Fire hydrants; or
- Portable basketball goals and other structures in the public right-of-way.



Figure 2 – Parking prevents plowing around the cul-de-sac

The County recommends that no vehicles be parked in the cul-de-sac when winter weather approaches. When snow plow operators encounter vehicles, this causes maneuverability issues and the preferred plowing strategy cannot be implemented. Also, inappropriately parked vehicles on the street leading to the cul-de-sac may impede access to the cul-de-sac.

Alternate Plowing Strategy

If any condition prevents execution of the County's preferred plowing strategy, forces will clear a central path through the cul-de-sac. Snow will be pushed to the best available location in the public right-of-way which least impacts residents.

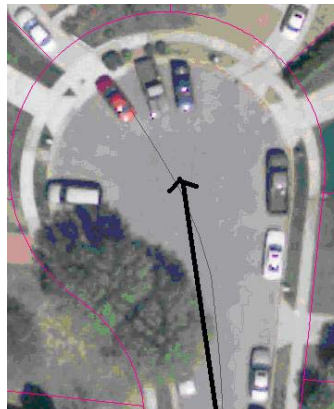


Figure 3 - Plows will clear a central path

Level of Service

Following plowing, culs-de-sac should be passable, but not necessarily cleared to bare pavement as explained in our Travel Guide at

<http://www.aacounty.org/DPW/Highways/Resources/AA%20County%20Travel%20Guide.pdf> .