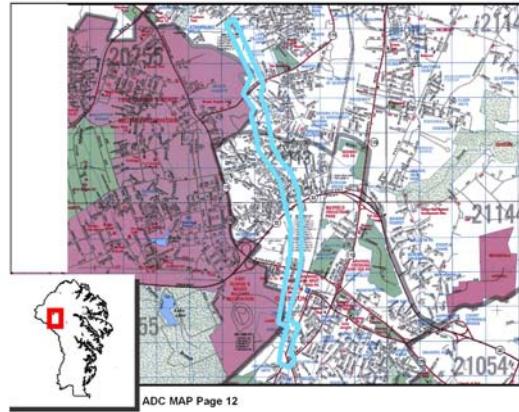


# TM ODENTON TO GLEN BURNIE HIGH ZONE

## Background

The purpose of this project is to construct 32,000 feet of 36" transmission main from the intersection of Waugh Chapel Road and Chapelgate Road to 1615 Disney Rd. This is an integral part of the County's Crofton to Glen Burnie Transmission Main, as described in the 2007 – 2010 Master Plan for Water Supply & Sewerage Systems. The alignment will generally run north through the Odenton Town Center (OTC) via the proposed OTC Boulevard, then through Seven Oaks to Jacob Road, then crossing Reece Road and continuing north cross-country to Disney Road. At its terminus at Disney Road, it will interconnect to a future water booster pumping station and elevated tank. This information is critical to the continued orderly phased growth and development of West County, including the import of BRAC.



## Benefits

- Meet County's planned growth and development needs
- Increase reliability and redundancy of County's water transmission and distribution network
- Provide for hydraulic interconnectivity between Arnold WTP and Crofton WTP
- Further reduced dependency on less reliable Baltimore City supply sources

## Project Status

Waugh Chapel Rd to Chapelgate Rd TM extension complete

- Design 85% complete
- Construction to begin October 2010
- Construction to be completed April 2012

## Project Information

Project Manager	Tom Gallagher (410) 571-0092
Design Consultant	WATEK Engineering
Contractor	TBD
Inspection Manager	Rummel, Klepper & Kahl
Estimated Total Project Cost	\$28.9M
Design Notice to Proceed	June 2004
Construction Notice to Proceed	October 2010
Projected Completion Date	April 2012

*For more information contact Customer Relations at 410-222-7582 or email us at [customer@aacounty.org](mailto:customer@aacounty.org)*