



Fort George G. Meade Region

Maryland Military Installation Council

April 23, 2007

Robert C. Leib
Fort George G. Meade
Regional BRAC Coordinator
410-222-1227 – Office
410-209-0412 – Cell
rleib@aacounty.org



Fort George G. Meade Region

22,000



New Jobs/Positions on Fort Meade

❖ Base Realignment and Closure	5,692
❖ National Security Agency (est.)	4,000 +
❖ Additional Organizations (est.)	<u>2,000 +</u> 12,000 +
❖ EUL Growth on FGGM (est.)	10,000
❖ HC Task Force planning assumption for all job growth on Fort Meade between 2006 and 2013:	22,000



Fort George G. Meade Region

**Growth impacts
have Regional
solutions**



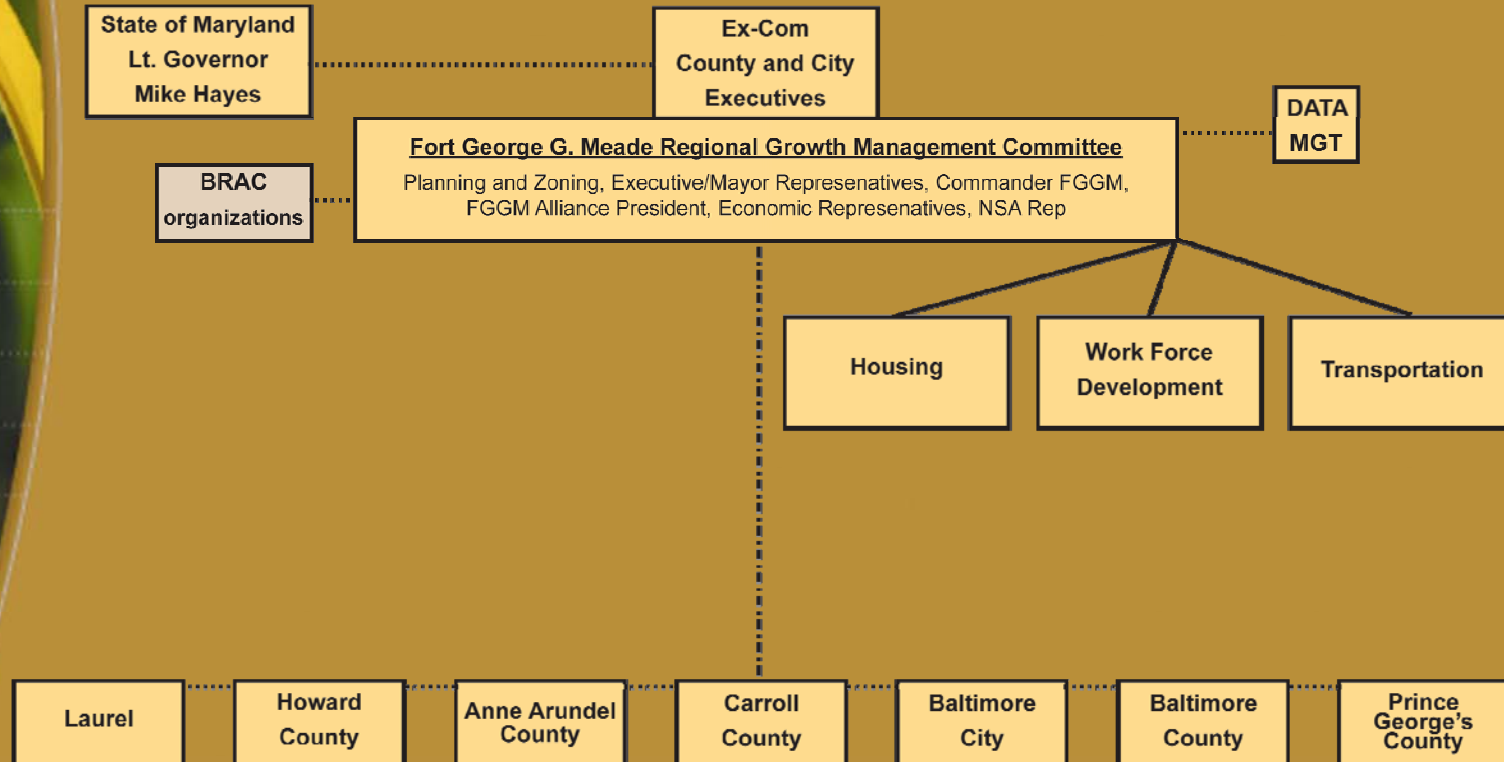
We Live, Work and Play in a Region!



- Transportation
- Infrastructure
- Public Safety
- Security
- Work
- Retail
- Housing
- Commuting
- Quality of Life
- Recreation
- Higher Education
- Workforce Development



Fort George G. Meade Region





What is the Fort Meade Growth Schedule

(Projections!)

	2005	2006	2007	2008	2009	2010	2011	2012	2013	2014	2015
Fort Meade and Regional Growth	National Security Agency										
				(Construction) Enhanced Use Lease							
	Other Department of Defence Organizations										
	(Construction) Base Realignment and Closure										
BRAC Unit Moves						DISA					
						Adjudication Agencies					
						Media Agencies					
BRAC Construction Schedule (tentative)			E I S	DISA							
				Adjudication Agencies							
				Media							
				EUL							
State, Regional and Local Planning Actions	DBED Study - State Strategic Plan										
	HC Phase I - Phase II - Phase III ----- Sustainment										
	Anne Arundel County Growth Management TF										
	Fort Meade Growth Management Committee										



Fort George G. Meade Region

Maryland Military Installation Council

April 23, 2007

Robert C. Leib
Fort George G. Meade
Regional BRAC Coordinator
410-222-1227 – Office
410-209-0412 – Cell
rleib@aacounty.org