

Anne Arundel County Council



ANNE ARUNDEL COUNTY
MARYLAND

Tuesday August 14, 2007

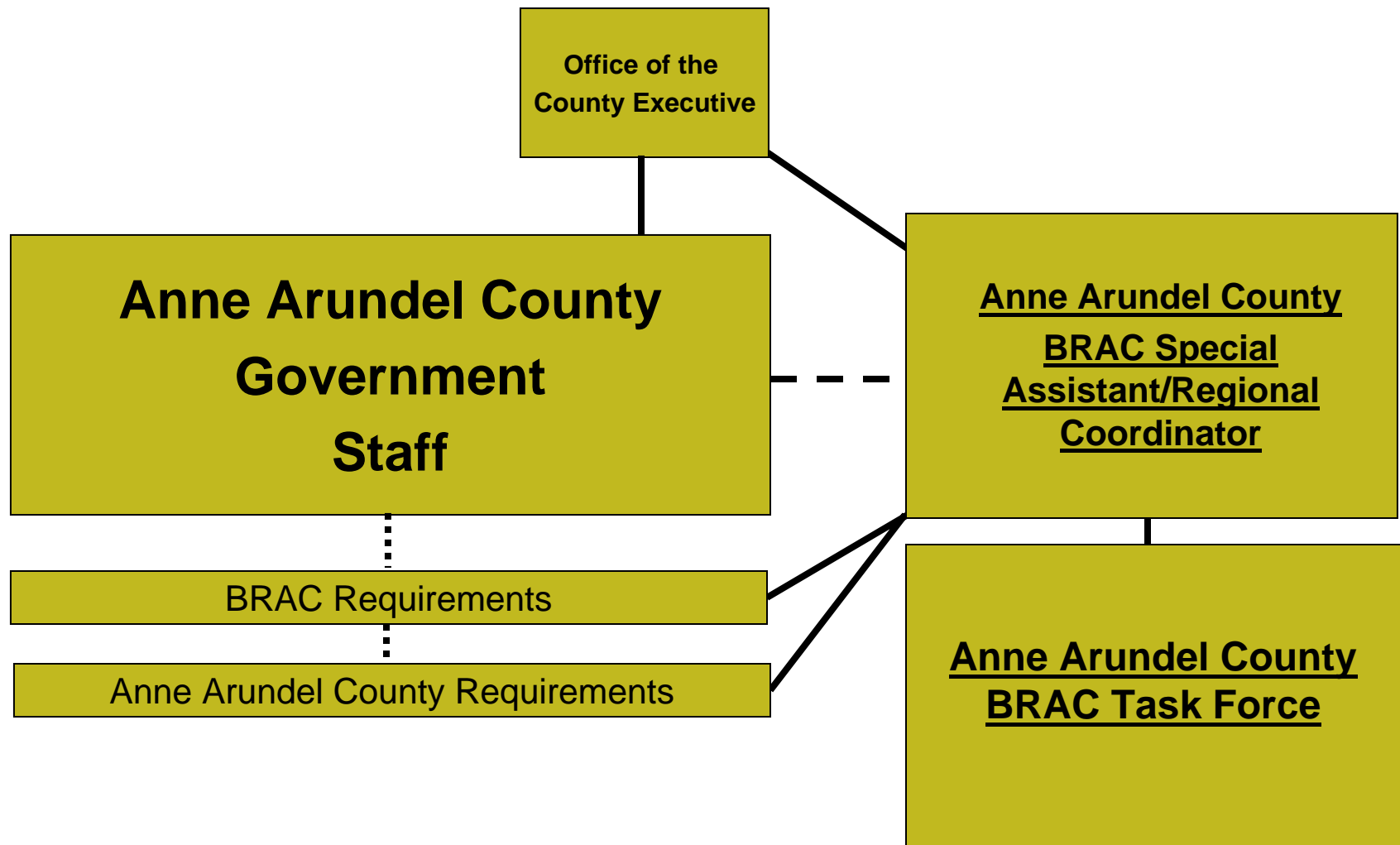
BRAC 2005

- ① **The 2005 BRAC results represent the largest single employment growth activity in Maryland since WWII**
- ① **Continue to underpin Maryland's movement toward a more stable and increasingly knowledge-based economy**





Anne Arundel County BRAC Organization



“Two Way” Communications With the Public

Complete Transparency

Task Force Meetings

- ❖ Next meeting September 19, 2007

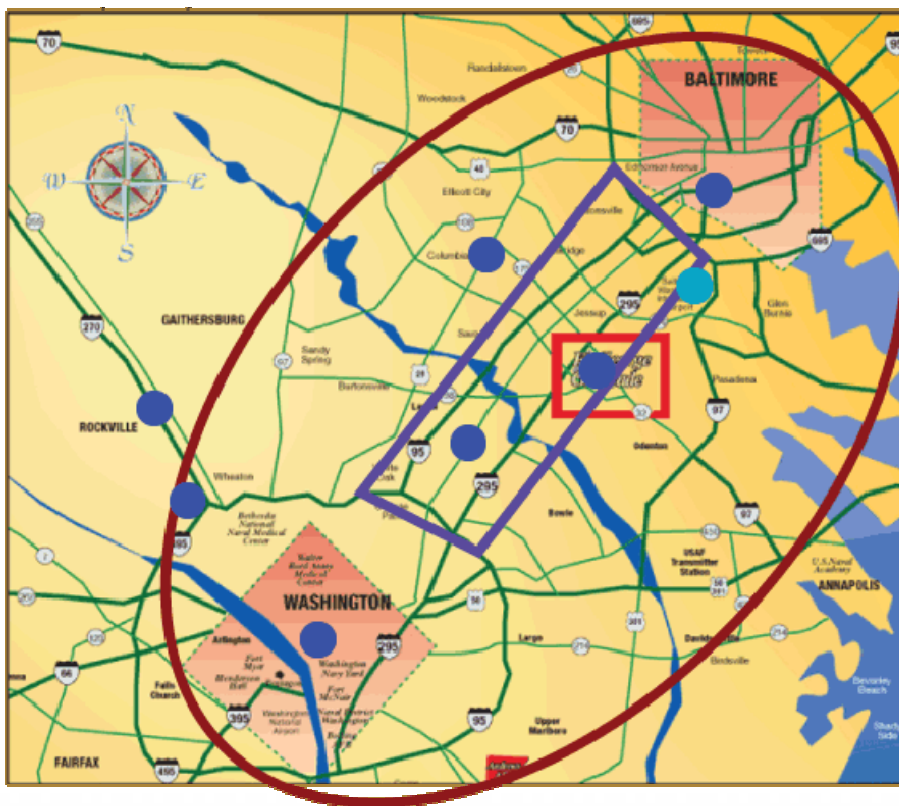
BRAC Updates

- ❖ BRAC Forum: 4th Wednesday of each month at the Arundel Center
- ❖ Presentations to community and business organizations

BRAC page on Anne Arundel County Website

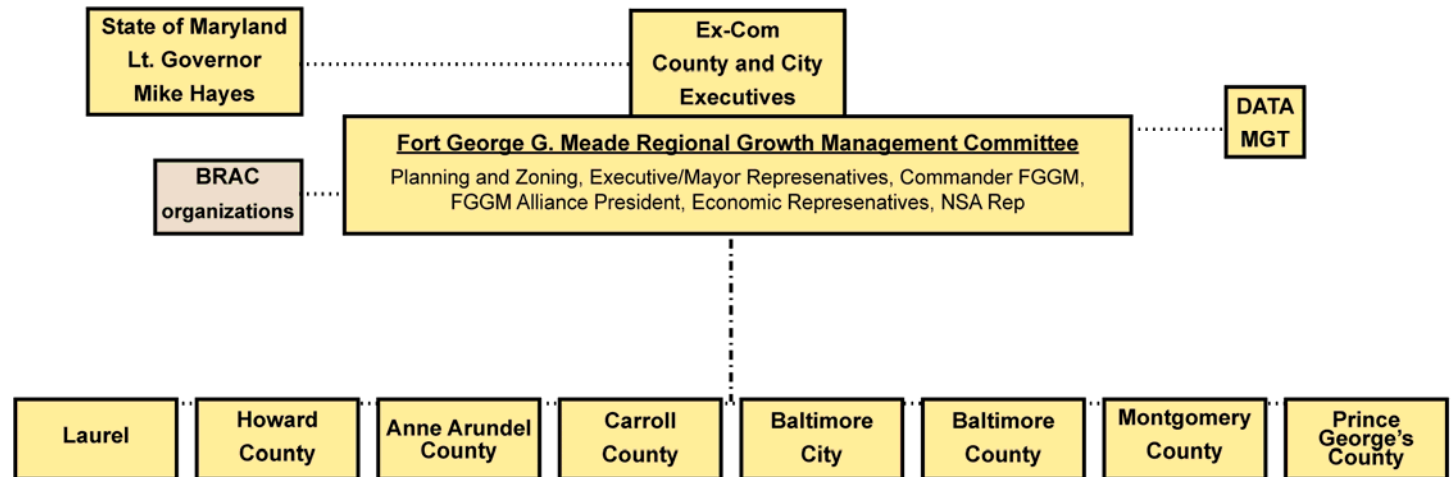
Newspaper articles

We Live, Work and Play in a Region!



- Transportation
- Infrastructure
- Public Safety
- Security
- Work
- Retail
- Housing
- Commuting
- Quality of Life
- Recreation
- Higher Education
- Workforce Development

The Fort George Meade Region!



Fort Meade

Background Recommendation

5,695 new jobs projected Focused on Joint Operations

- ① Consolidation of Media and Publication Activities (2008 & 2010)
Total of 663 personnel
- ① Defense Military Dept. Adjudication Activities (2010)
Total of 760 personnel
- ① Defense Information Systems Agency (2010)
Total of 4,272 personnel



When will they come?

- ① **All functional relocations must take place before the end of 2011**
- ① **Personnel moving with the job will get change of station orders in July 2010. They then have 24 months to make the move**



Projected Household Demographics

 Maryland Department of Planning expects a total of 28,176 new households as a result of BRAC.

❖ Fort Meade:	10,679	(42%)
❖ APG:	14,159	(56%)
❖ AAFB:	474	(1.9%)

Projected Household Distribution

Harford County	26% or 6,533
Anne Arundel County	18% or 4,457
Baltimore County	14% or 3,653
Baltimore City	10% or 2,549
Montgomery County	9% or 2,274
Cecil County	8% or 1,998
Prince Georges	8% or 1,995
Howard County	7% or 1,853

Where Will New People Live?

- ① **Marc Rail-Line as it extends north to BWI and the Laurel Area**
 - ❖ 400-700 households projected with greatest concentration in Russet of 100 – 150 households

- ① **Waugh Chapel Road Corridor from Piney Orchard into and including Crofton**
 - ❖ 400 – 700 households projected

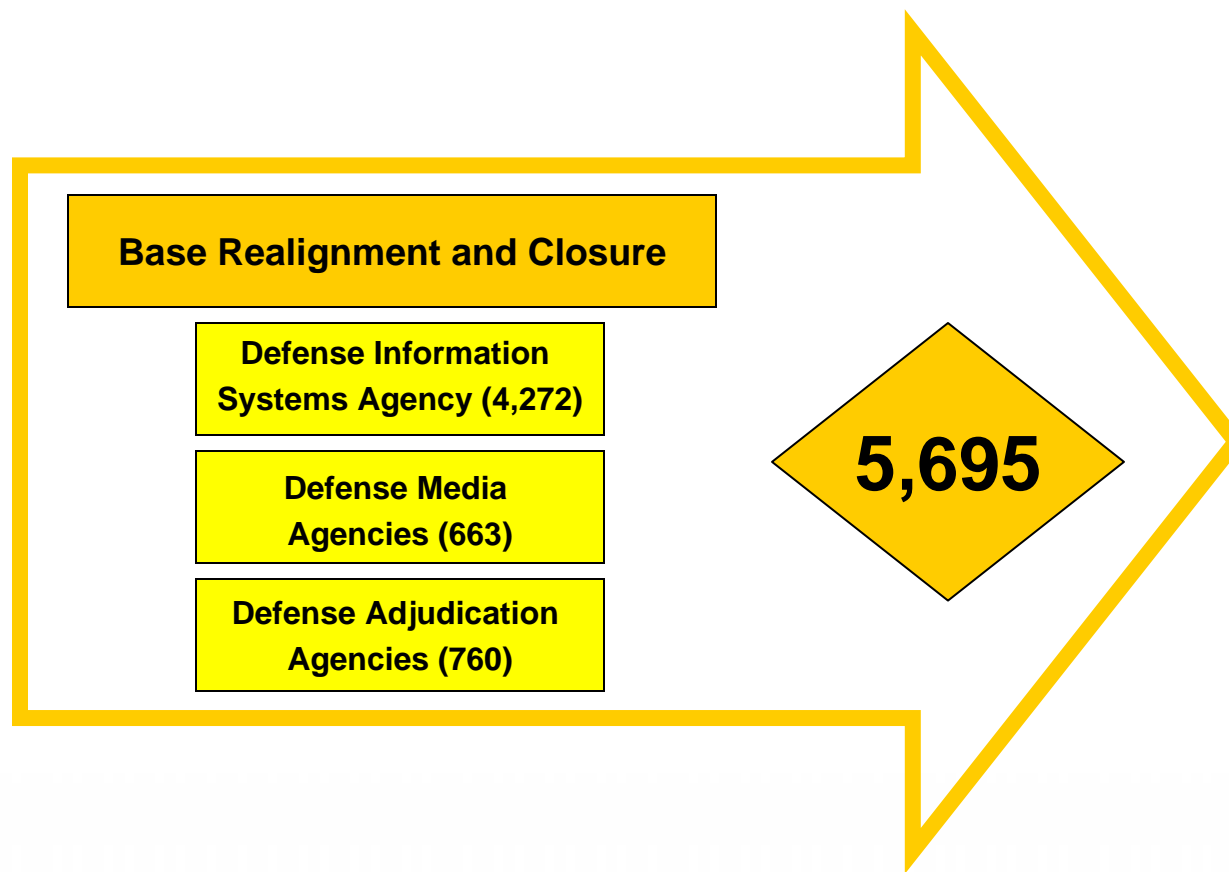
- ① **Mountain Road and Fort Small Wood Road Corridors (including Tanyard Cove and Tanyard Springs)**
 - ❖ 200 – 400 households projected

- Annapolis Peninsula, Broadneck Peninsula, Glen Burnie, and far Northern Anne Arundel County near Brooklyn**
 - ❖ 200 – 400 households projected

- ① **Areas along Chesapeake Bay including Deale & Shady Side**
 - ❖ Near 200 households projected

- ① **Rest of County**
 - ❖ Fewer than 200 households projected
 - ❖ Source: Maryland BRAC Report, December 28, 2006, Maryland Department of Planning

Fort Meade Growth (5 To 7 Years)



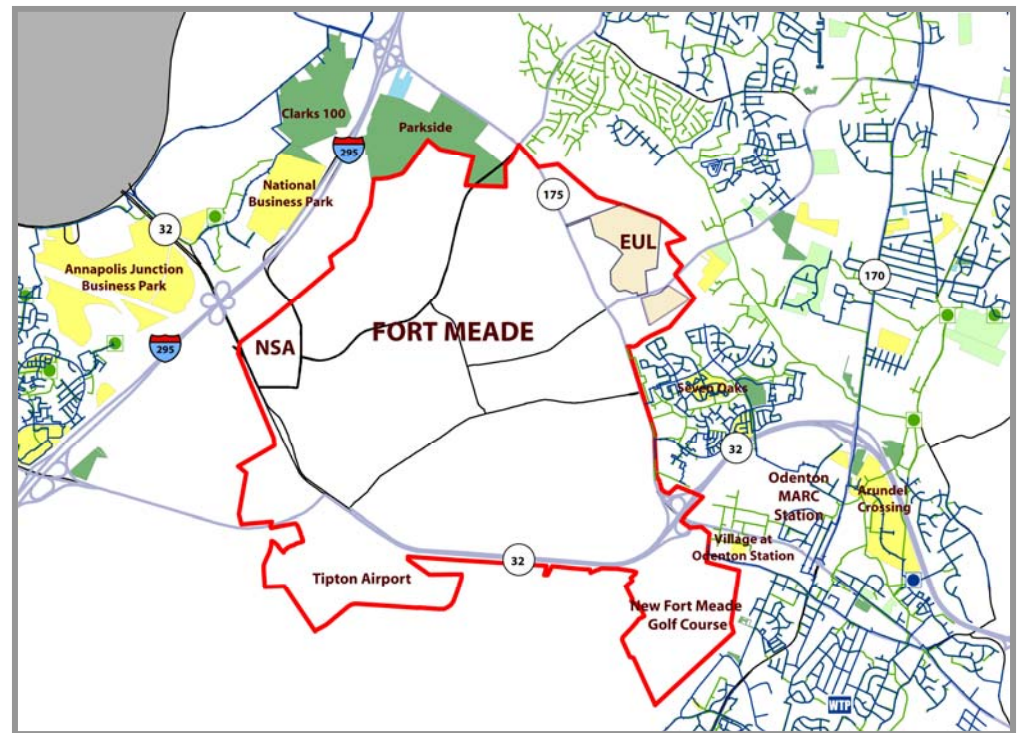
Fort Meade Growth (5 To 7 Years)



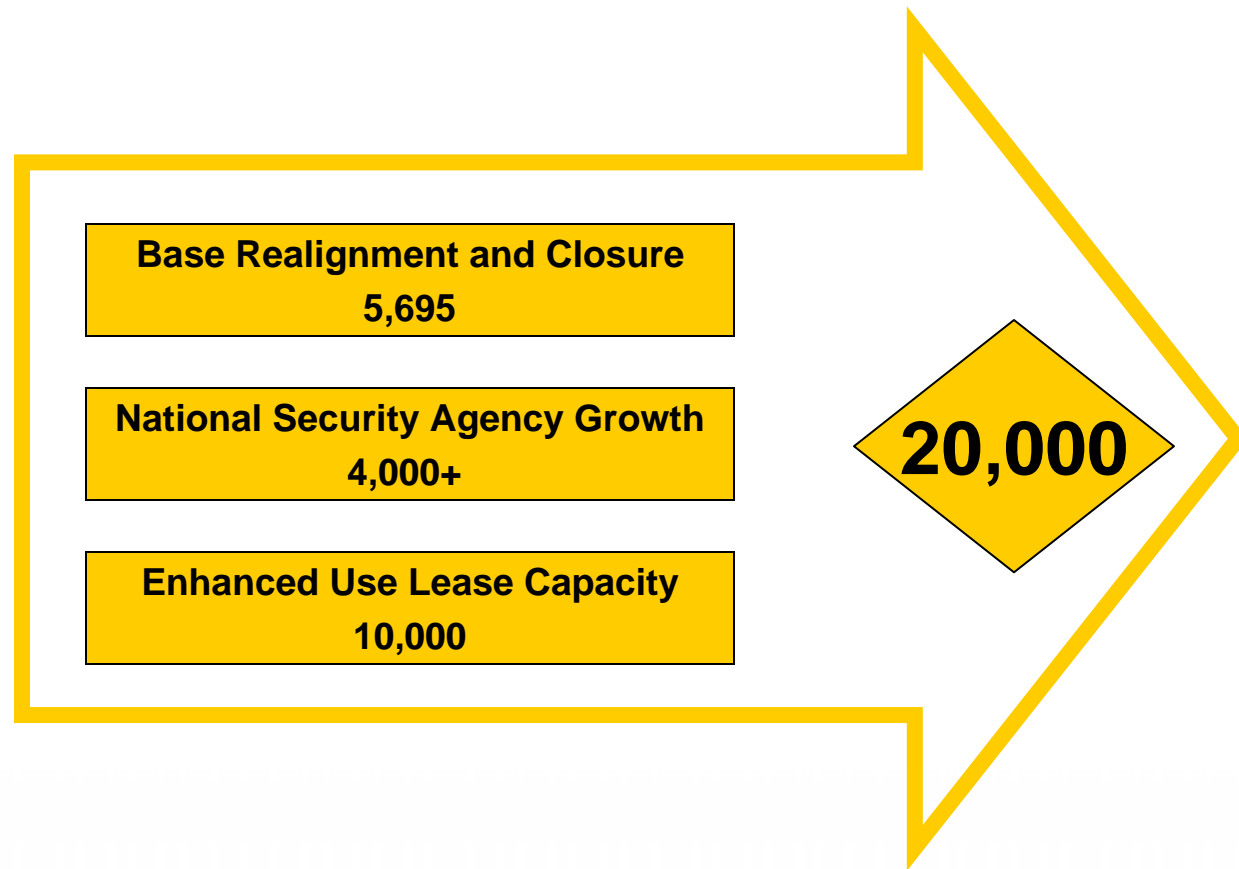
Fort George G. Meade/Enhanced Use Lease (EUL)

EUL is a tool used by the military to attract private sector capital and expertise to construct or upgrade facilities

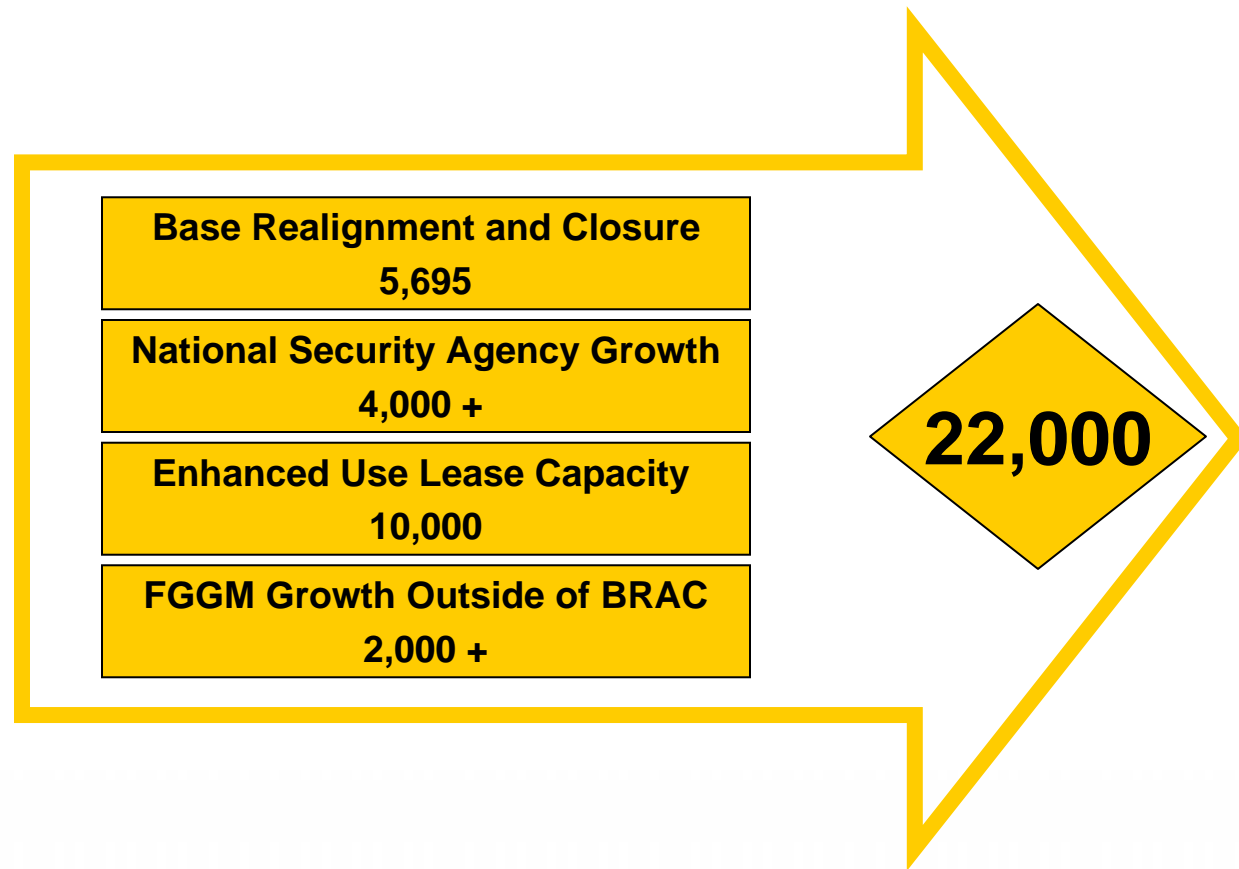
- ❖ Nov. 2006, Trammell Crow selected as developer
- ❖ 173 Acres to be developed
- ❖ 2 million sq ft of secured office space
- ❖ Additional 367 acre property to be developed into two, 18-hole golf courses
- ❖ \$750 million project
- ❖ 10 years to complete



Fort Meade Growth (5 To 7 Years)



Fort Meade Growth (5 To 7 Years)



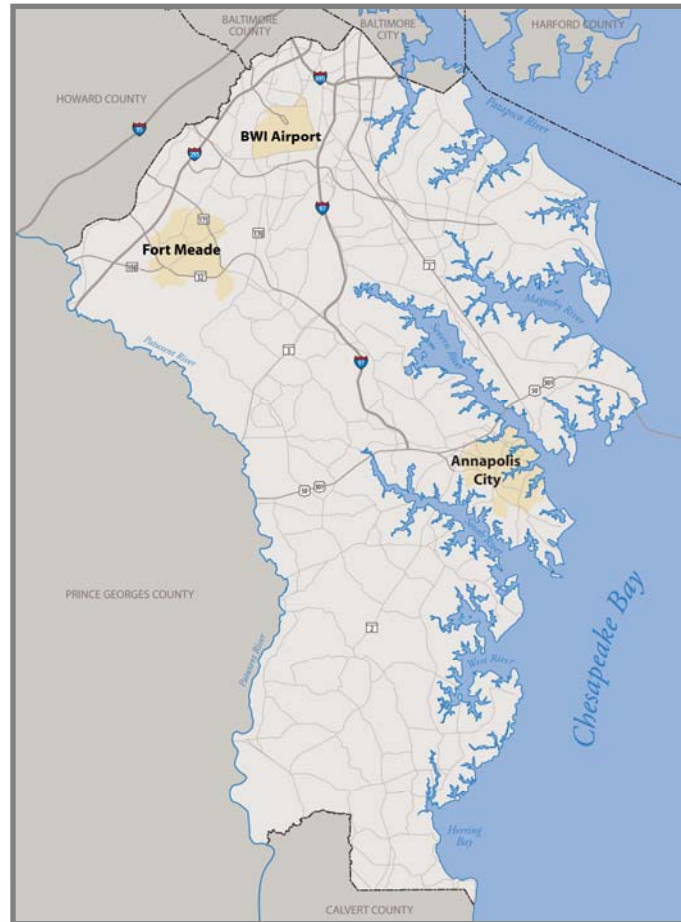
What is the Fort Meade Growth Schedule

(Projections!)

	2005	2006	2007	2008	2009	2010	2011	2012	2013	2014	2015	
Fort Meade and Regional Growth	National Security Agency											
				(Construction) Enhanced Use Lease								
				Other Department of Defence Organizations								
				(Construction) Base Realignment and Closure								
BRAC Unit Moves												
						DISA						
						Adjudication Agencies						
BRAC Construction Schedule (tentative)												
			E I S	DISA								
				Adjudication Agencies								
				Media								
		EUL										
State, Regional and Local Planning Actions												
			DBED Study - State Strategic Plan									
			HC Phase I - Phase II - Phase III - - - - - Sustainment									
			Fort Meade GMC									
				Anne Arundel County BRAC Task Force								



Anne Arundel County Overview 2007



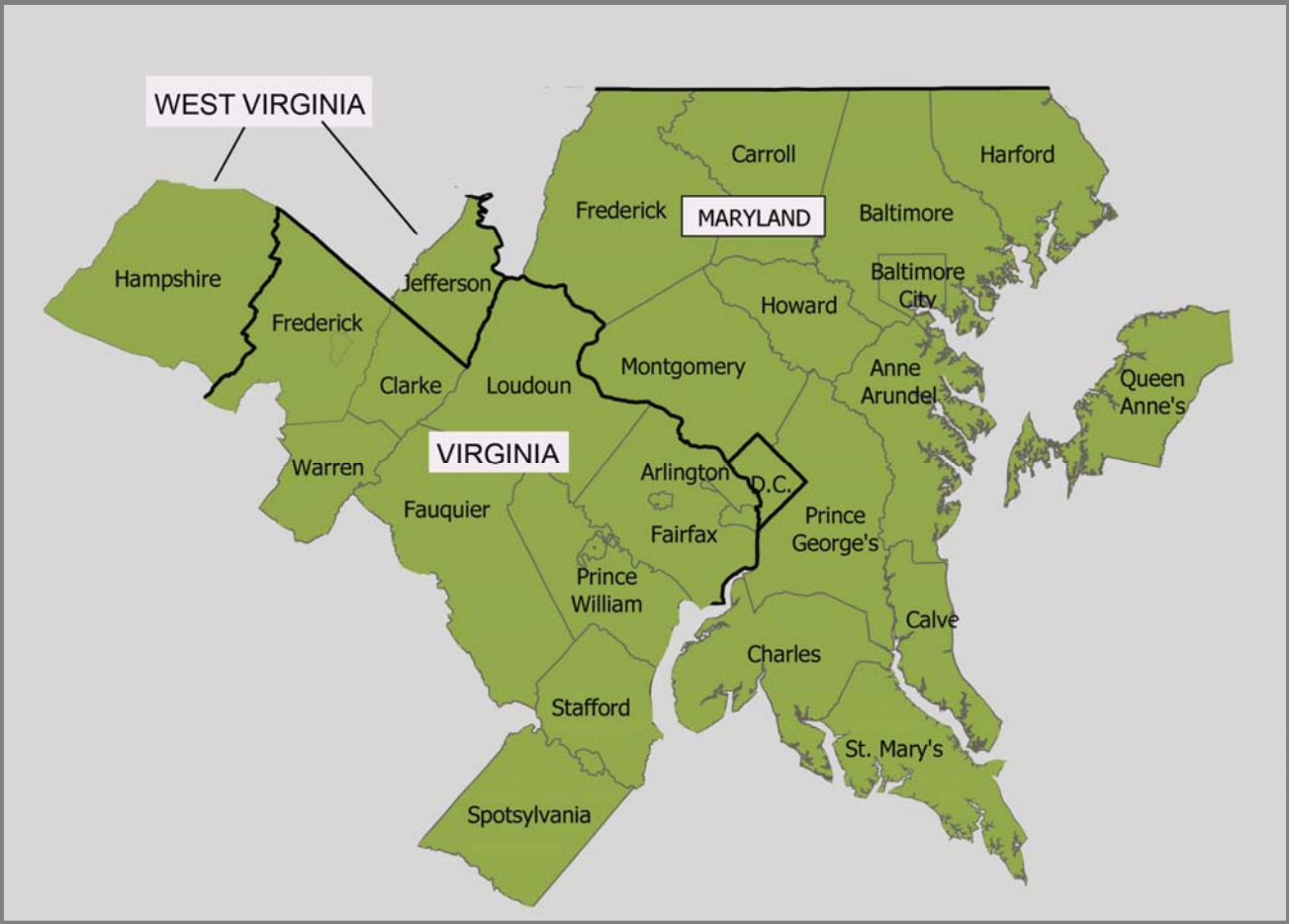
Population	516,860
Number of Households	188,141
Median HH Income	\$70,839
Per Capita Personal Income	\$42,723
Per Capita Income <i>(Growth 2000-2004)</i>	11.1%
Square Miles	418
Miles of Shoreline	534
Farmland Acreage	34,670



Source: Decision Data Resources 2006; Maryland Department of Economic Development Brief Economic Facts 2006-2007; Bureau of Economic Analysis

Combined Statistical Area

- ⑥ Anne Arundel County is strategically located in the Washington-Baltimore/ Northern VA Combined Statistical Area - 4th largest market in the U.S. with a population of 8.0 million



Source: 2000 US Census Bureau

Metropolitan Statistical Area

- Anne Arundel County is located in the Baltimore –Towson Metropolitan Statistical Area - population 2.6 million



Job Growth in Anne Arundel County

New County Jobs 2000-2006	32,995
Civilian Labor Force (2006 annual average)	282,149
Unemployment Rate (2006 annual average)	3.3%
Number of Businesses (2nd QTR 2006)	14,286
Number of Business Licenses Issued	
	2005
	1,842
	2006
	1,967



Anne Arundel County Net New Jobs 2000-2005

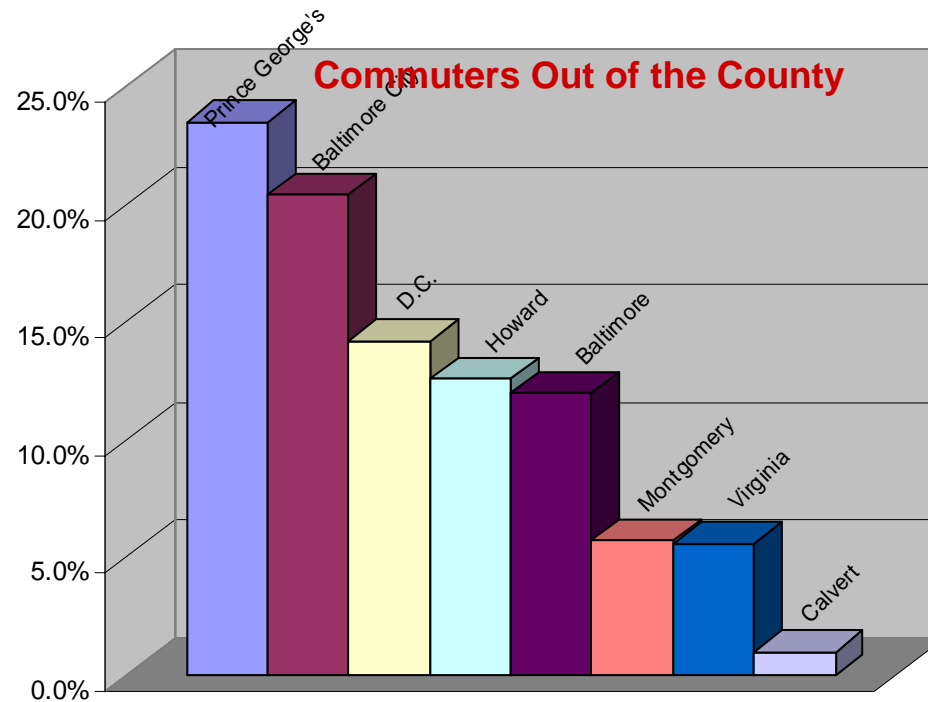


BWI Thurgood Marshall/ North County	9,022
Fort George G. Meade/ West County	7,623
Annapolis/Central County	7,780
South County	1,048
Total	25,473

Interconnected Region

Anne Arundel County Residents Working in Surrounding Jurisdictions

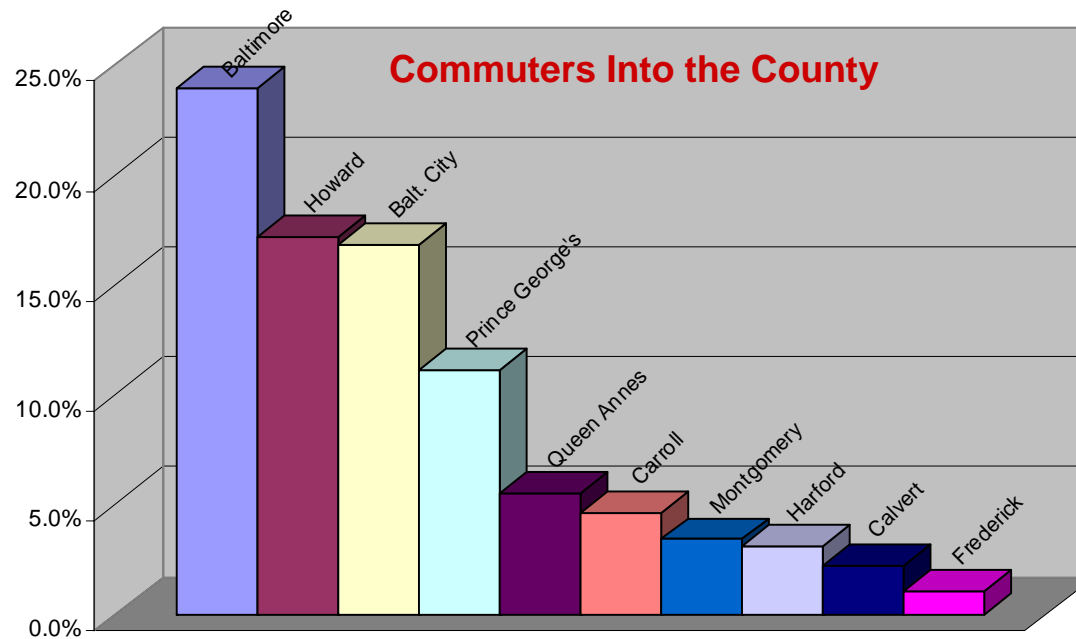
111,825 Residents commute out of Anne Arundel County to work



Interconnected Region

People Working in Anne Arundel County

- 144,033 Anne Arundel County residents work within the county
- 81,000 workers commute into Anne Arundel County



Commercial Development Activity in West County

Planned Commercial Office Space	13,605,408 Square feet
Planned Commercial Retail Space	1,465,609 Square feet
Total	15,071,017 Square feet
Hotels	19 new and proposed

Residential Development Activity in West County

	Number of units
Age Restricted	744
Vested	4,293
Planned (not vested)	1,177
Total	6,214



Anne Arundel County BRAC /Growth Priority Issues

General Development Plan Revision

- ❖ Reinforce, Support, Advance Designated Growth Areas
 - *Parole*
 - *Glen Burnie*
 - *BWI-Aerotropolis*
 - *Odenton*
 - Town Center Zoning in Place
 - Planned for High Density Development
 - TOD-MARC Station Development

Transform Interest/Plans Into “**ACTION**”

Anne Arundel County BRAC /Growth Priority Issues

Transportation

- ❖ Road Capacity
 - *Fort Meade Core*
 - **Immediately Surrounding Fort Meade**
 - » *MD 175 (2011-2015)*
 - » *Near Term Highway Corridor Solutions (OEA Funded) (2009-2011)*
 - **Supporting Fort Meade**
 - » *Transit Ride Share Solutions (OEA Funded) (2009-2011)*
 - » *Central Maryland Bus Facility*
 - » *MARC Service Improvements*

Anne Arundel County BRAC /Growth Priority Issues

Housing

- ❖ Do we have enough planned units?
 - *Workforce Housing*
 - *Regional Housing Study-Phase I (OEA Funded)*

Education

- ❖ School Capacity
- ❖ Science, Technology, Engineering & Math (STEM) Initiatives
- ❖ Language Initiatives



Honorable John R. Leopold
Anne Arundel County Executive

Dennis Callahan
Anne Arundel County, Chief Administrative Officer

Robert Leib
Anne Arundel County, Special Assistant for BRAC/Education