



BRAC and Beyond

DOD Growth

in the

Fort George G. Meade Region

- *Moving Forward*
- *Creating Opportunity*
- *Preserving Lifestyle*



Agenda

- ◆ **Opening and General Update**
- ◆ **SHA – MD 175, MD 198 and MD 32**
- ◆ **Education and Workforce Development**
- ◆ **Open Forum**

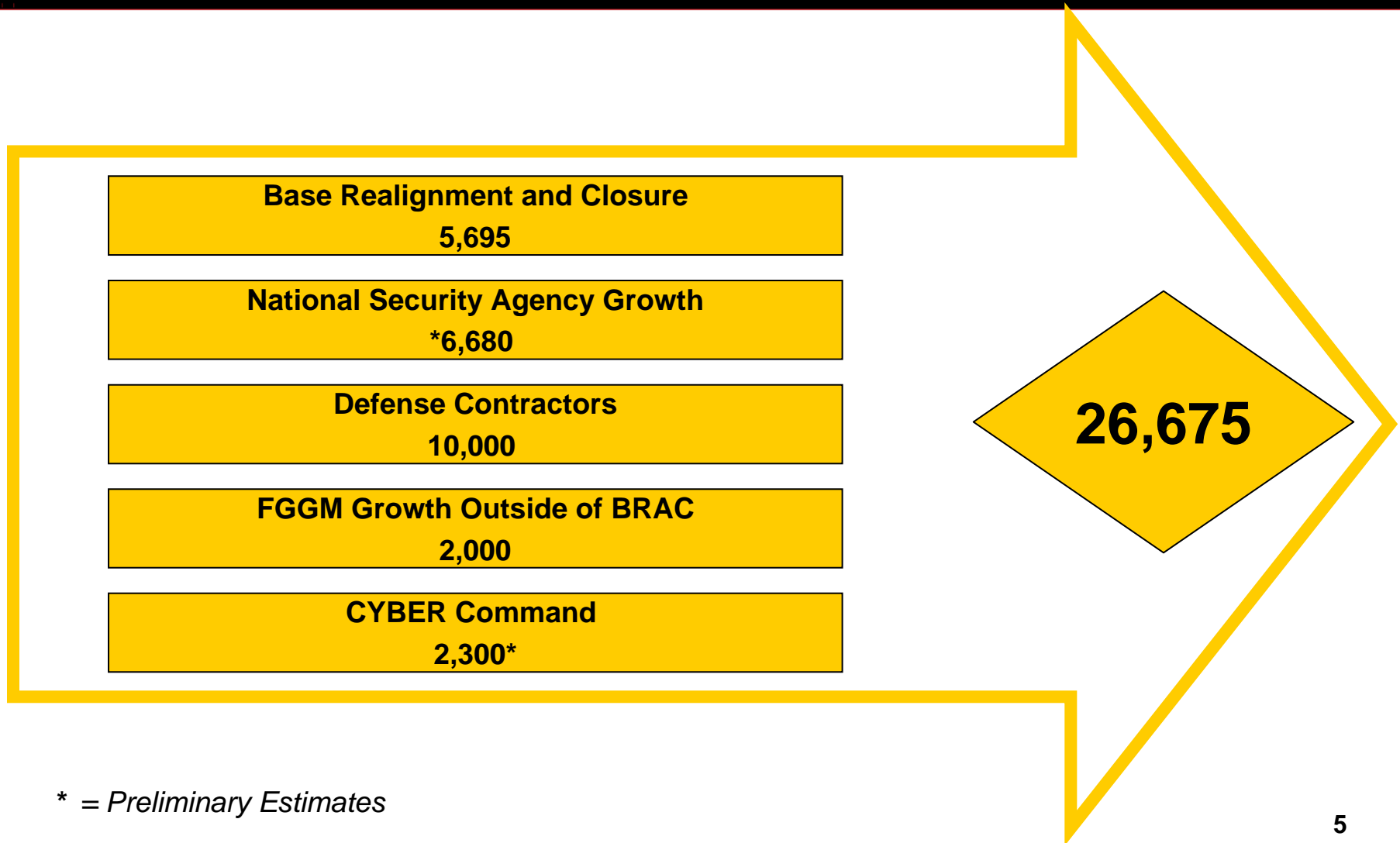
Key Points

- ◆ **Fort Meade is the dominant economic force in the region.**
- ◆ **The Fort Meade Region is the epi-center of the Cyberspace and Information Assurance Industries.**

Fort George G. Meade Information

- ❖ 56,800 Military, Government Service civilian and contractor employees (largest employer in the state)
- ❖ 5,400 Acres
- ❖ 90+ Partner Organizations
- ❖ 10,000 Residents
- ❖ 35,000+ Vehicles a day
- ❖ 2,300 Family Units
- ❖ \$ 1.1 Billion of construction on the books, w/o NSA or Cyber Command
- ❖ 5.8 Million Square Feet of NSA expansion in planning (Draft EIS)
- ❖ Over \$17 Billion a year into the state, regional, and local economy

Fort Meade Growth 2007 – 2015 (and beyond?)





Anne Arundel County BRAC Task Force



BRAC STATUS

- DISA: New facility 100% complete.
- Employee move complete.

- DMA: New facility 100% complete.
- Employee move complete.

- Adjudications: 100% complete.
- Employee move complete.



Cyber at Fort Meade (As of September 2011)



◆ Commands	Jobs
❖ HQ Defense Cyber Command	2,320
❖ HQ, Fleet Cyber Command	
❖ HQ, Army Force Cyber	
❖ HQ, Marine Force Cyber	
❖ Homeland Security Cyber Element	

National Security Agency Campus Development

- ◆ Plans to develop additional portion of Fort Meade
 - ◆ Operational complex to meet the evolving needs of the intelligence community
- ◆ Record of Decision signed August 2011
- ◆ Phase One of Development
 - ◆ Complete by 2015
 - ◆ 1.8 million new square feet
 - ◆ 6,500 additional personnel

DOD Growth Related Business Growth 2008 to Present

- ❖ **Major Contractor Expansions in Region**
 - ❖ **Applied Signal Technologies** – National Business Park
 - ❖ **Boeing** – National Business Park
 - ❖ **Booz Allen Hamilton** – National Business Park
 - ❖ **CACI** – Hanover
 - ❖ **Lockheed Martin** – Hanover
 - ❖ **ManTech** – Hanover
 - ❖ **Raytheon** – National Business Park
 - ❖ **Telecommunications Systems** - Hanover

DOD Growth Related Business Growth 2008 to Present

❖ Contractor Openings in Region

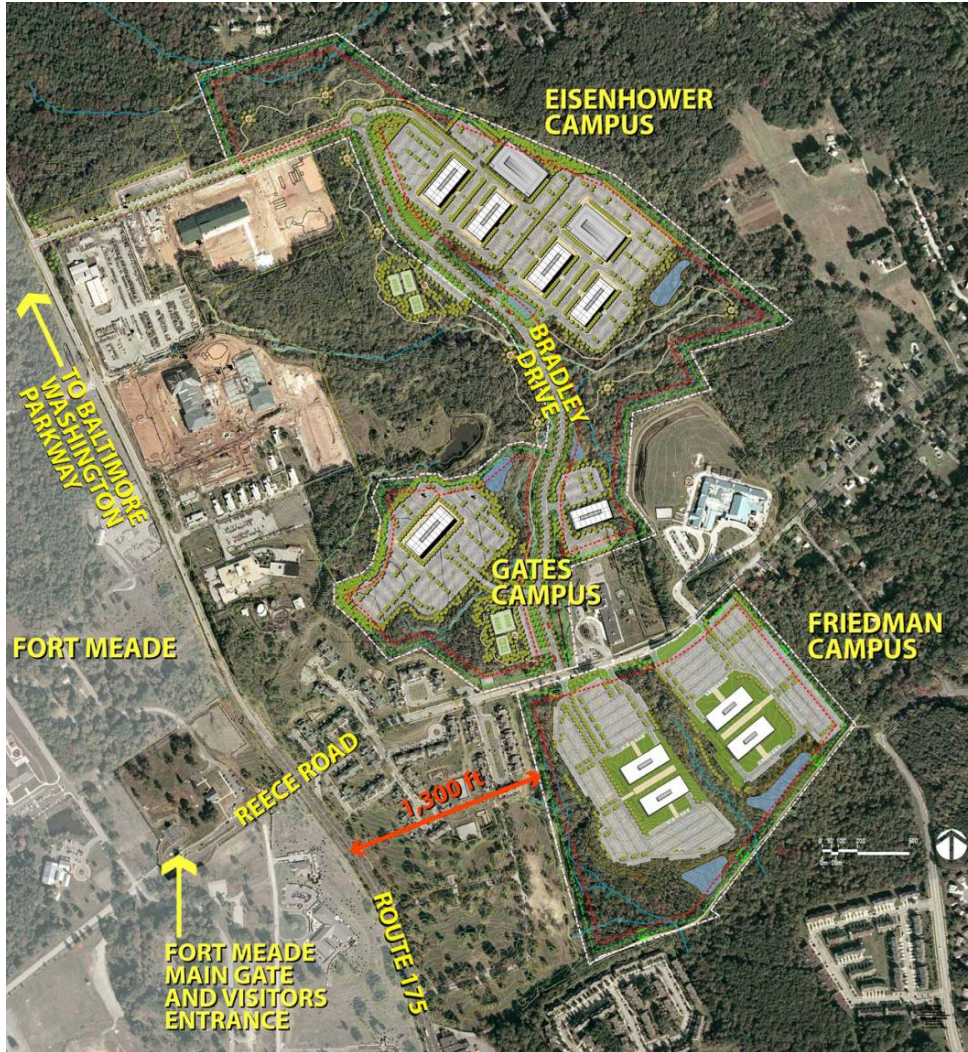
- **Computer Associates** – Airport Square
- **3Di Technologies** – Arundel Overlook
- **Delta Resources** - Millersville
- **G2** – National Business Park
- **InfoTek** - Hanover
- **InfoZen** – National Business Park
- **iNovex** - CIC
- **MITRE** – National Business Park
- **Seismic, LLC** – Hanover
- **Stanley Associates** – National Business Park
- **TexelTek** – National Business Park

National BP/ Phase III

- ◆ **Phase III underway**
- ◆ **NBP continues to expand**
 - ❖ 2006 COPT purchased 178 acre property adjacent to NBP for Phase III development
 - ❖ 2010 County enacted \$30M TIF for the expansion of NBP using Federal Stimulus Economic Development Bonds
 - ❖ Construction underway on 1.4 million SF of office space for Phase III of National Business Park



Enhanced Use Lease (EUL) Overall Site Plan



Fort George G. Meade Growth



Agenda

- ◆ **SHA – MD 175, MD 198 and MD 32**
- ◆ **Education and Workforce Development**
- ◆ **Open Forum**