

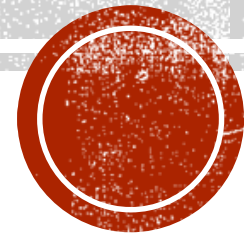
FY 2020 LDC ACCOMPLISHMENTS

September 16, 2020

Presented by

Dave Sims and Erin Karpewicz

Arundel Community Development Services, Inc.



HUMAN SERVICES FOR SUCCESS

The overarching goal is to deploy resources for services that will have the greatest impact on people's lives – not just in terms of number of people served, but also to the extent the service creates opportunities for success and self-sufficiency. Focus will be on initiatives that provide positive outcomes around the following areas:

- transportation (empower accessibility);
- help with child care (empower people to work);
- recreation & youth development (after school programs, mentoring, police programs, Boys & Girls Clubs);
- food and nutrition assistance (support a holistic food program);
- increase employability programs (jobs skills training but also soft skills);
- case management & support (to help people get on their feet in a sustainable way); and
- affordable housing development and stabilization.

The LDC also supports the development of a regional facility to house needed programs such as services for seniors, job training classes, child support, wellness programs, and community activities.





BOYS & GIRLS CLUB @ MEADE





BWI COMMUNITY DEVELOPMENT FOUNDATION- COUNTY CONNECTOR SHUTTLE





CHRISTIAN ASSISTANCE PROGRAM





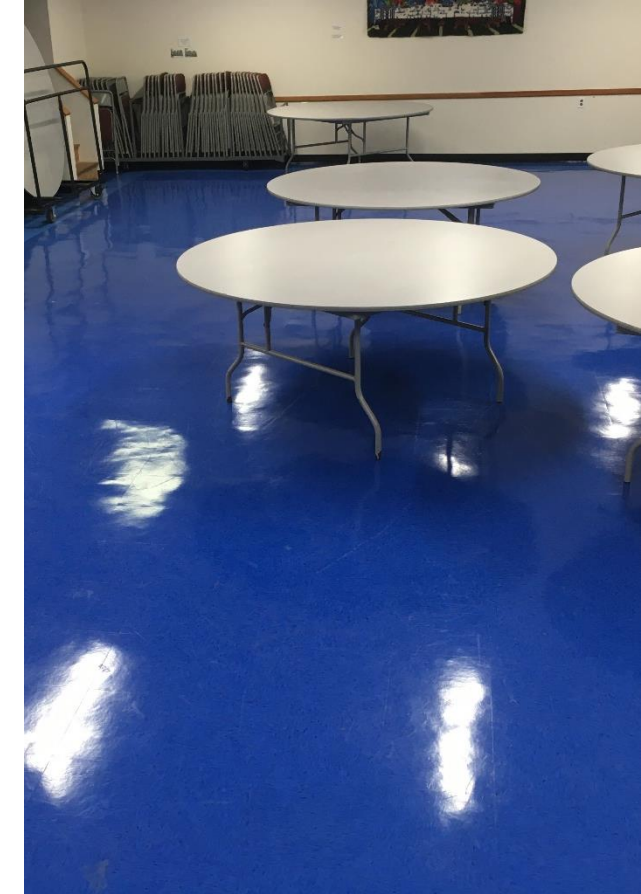
CHESAPEAKE REGION ACCESSIBLE BOATING (CRAB)





**HOPE FOR
ALL**





SEVERN METHODIST CHURCH





YWCA





PARTNERS IN CARE, INC.





SARAH'S HOUSE — CHILD CARE PROGRAM





SARAH'S HOUSE - CAPITAL





**UNIVERSITY OF MARYLAND BALTIMORE
WASHINGTON MEDICAL CENTER — OPIOID
OVERDOSE RESPONSE PROGRAM**

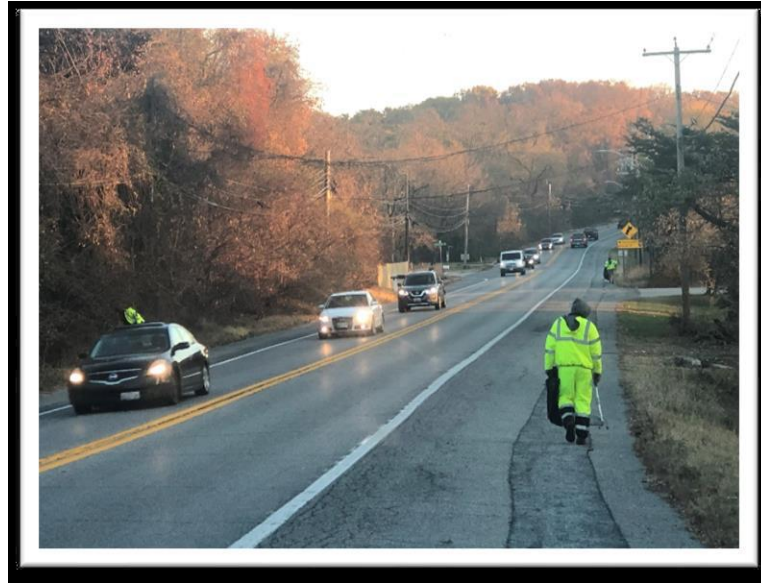


COMMUNITY BEAUTIFICATION AND REVITALIZATION

The overarching goal is to invest in capital improvements in communities and on public land located within the three-mile radius of Maryland Live! Casino impacted by the Casino and/or low and moderate income communities in need of revitalization with limited finances available to address the need. Priority will be given to property repair programs and beautification activities.

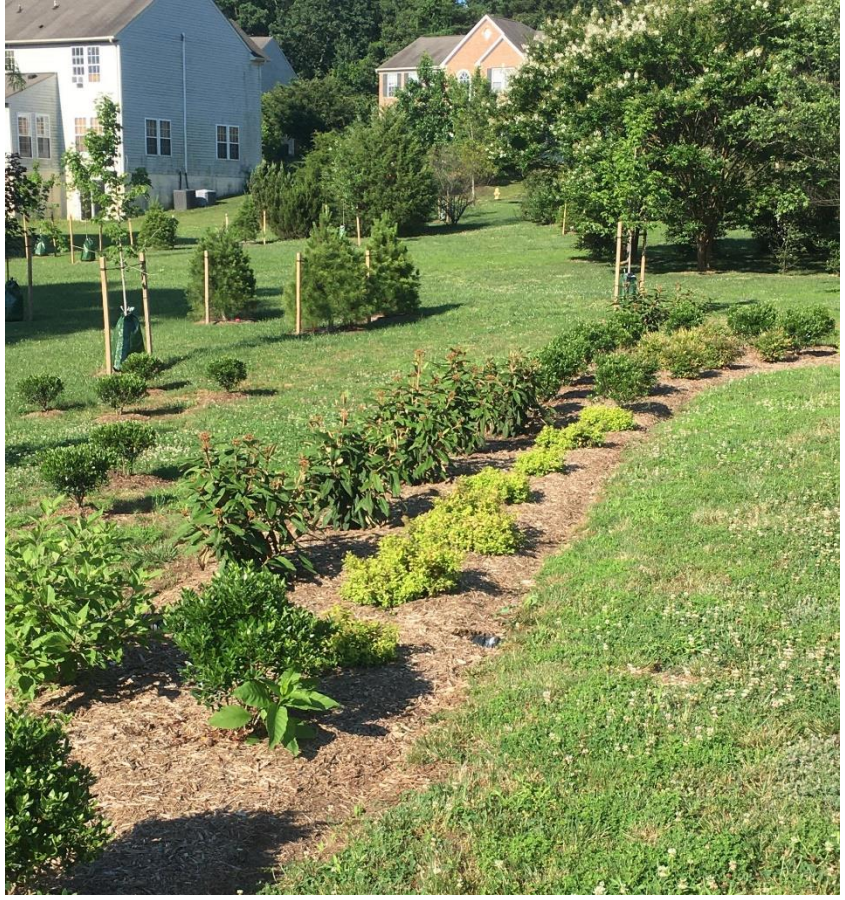


BWI COMMUNITY DEVELOPMENT FOUNDATION, INC. – ROADSIDE BEAUTIFICATION PROGRAM



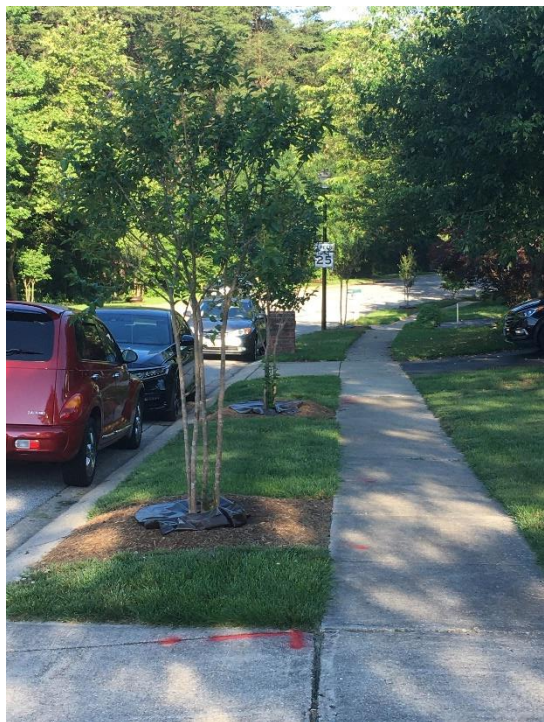


REDBRIDGE HOA- FENCE REPLACEMENT

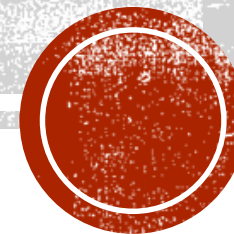


RIDGE FOREST GLEN HOA



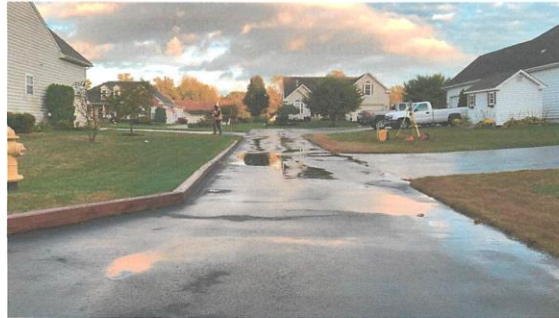


RIDGE FOREST HOA — TREE REPLACEMENT



SEVERN CREST HOA

TRUITT LANE DRAINAGE ASSESSMENT REPORT



JANUARY 2020

Prepared for:

Severn Crest Homeowners' Association
Severn, Maryland 21144

Prepared by:

 **BayLand**
Consultants & Designers, Inc.

"Integrating Engineering and Environment"

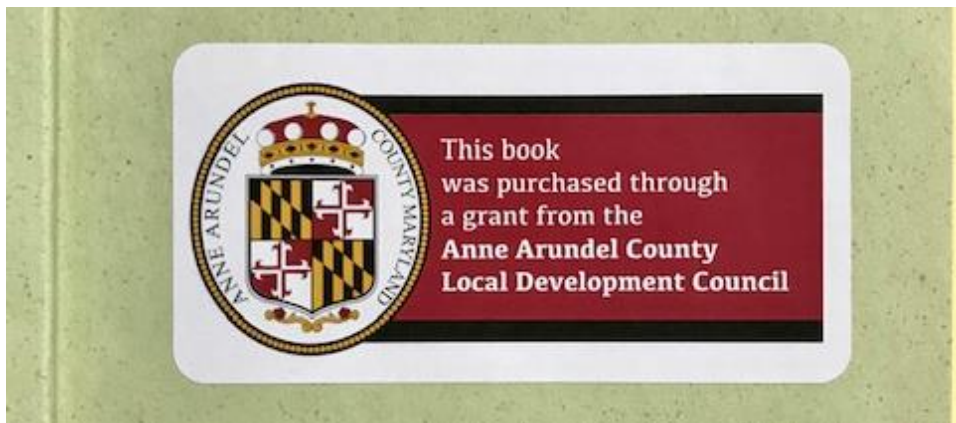
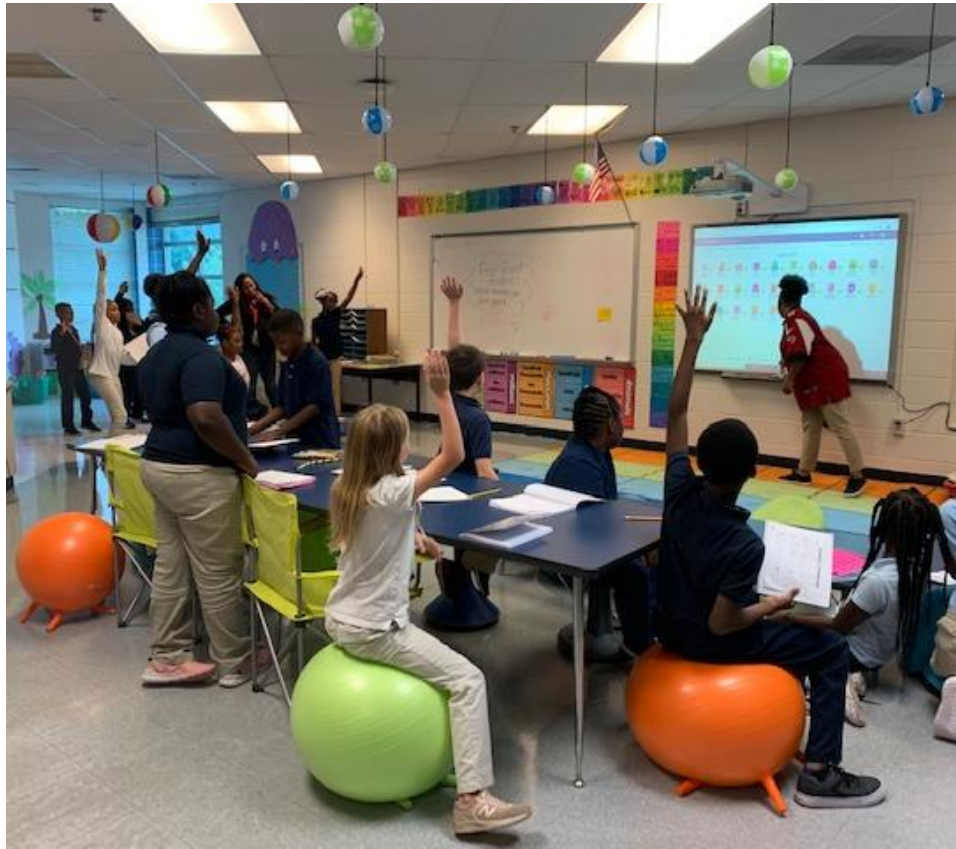
7455 New Ridge Road, Suite T Phone: (410) 694-9401
Hanover, Maryland 21076 Fax: (410) 694-9405
Website: www.baylandinc.com



ENHANCING EDUCATIONAL OUTCOMES

- The LDC will work with AACPS to develop a “needs” list for schools within the three-mile radius that have had little or no LDC support to date and (a) may not have the internal support necessary to generate such a list on their own and/or (b) may have substandard or inadequate facilities.
- Educational initiatives submitted for LDC funding should be beyond what the Board of Education should be funding and not increase the County’s maintenance of effort obligations.
- LDC funding should not be replacing funding that is available from other resources.





AA COUNTY COUNCIL OF PTAS – TRAUMA SENSITIVE CLASSROOMS



ASSISTANCE LEAGUE OF THE CHESAPEAKE





FORT MEADE ALLIANCE – MEADE CYBER LAB



IMA OF MEADE SR HIGH SCHOOL

